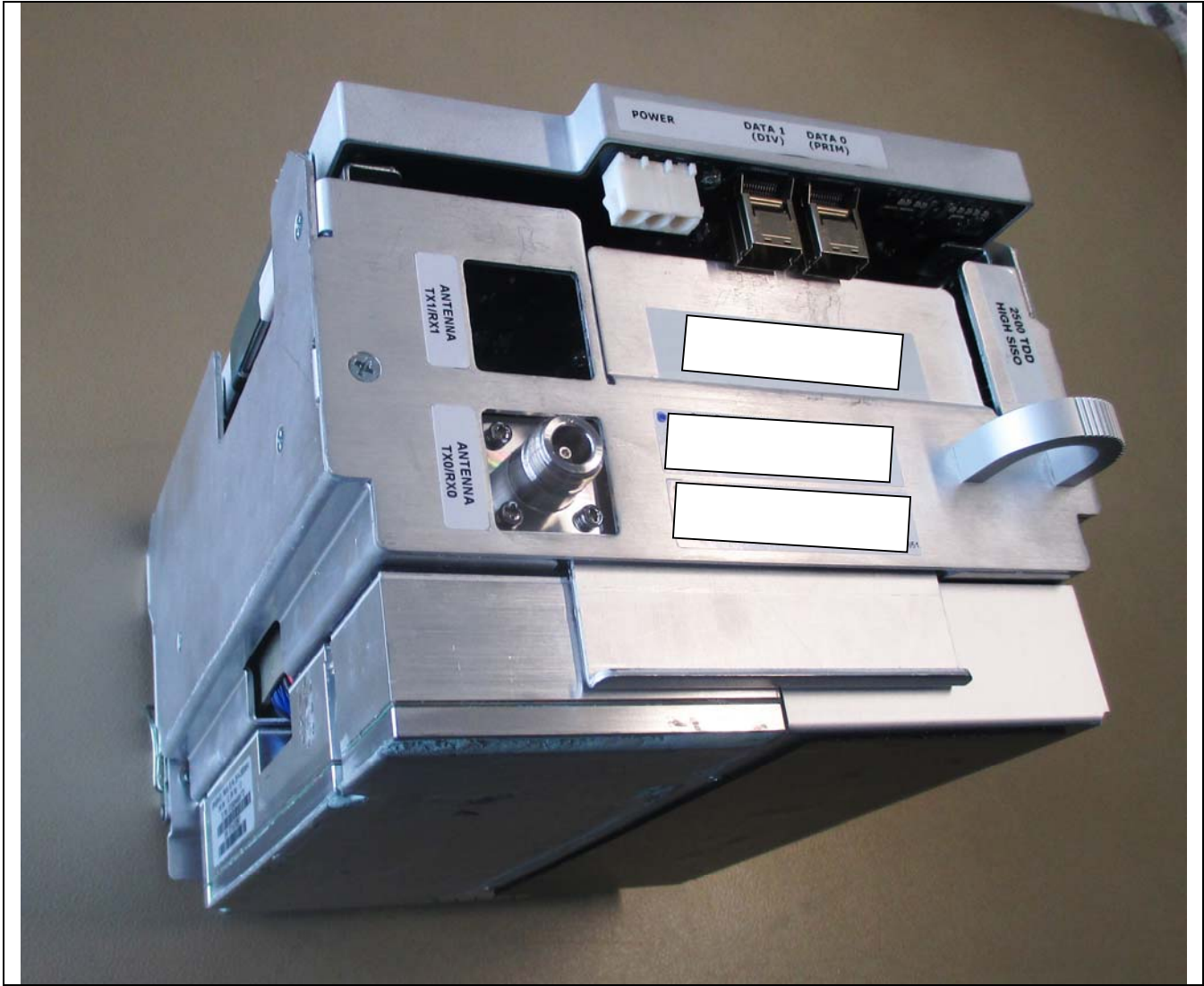
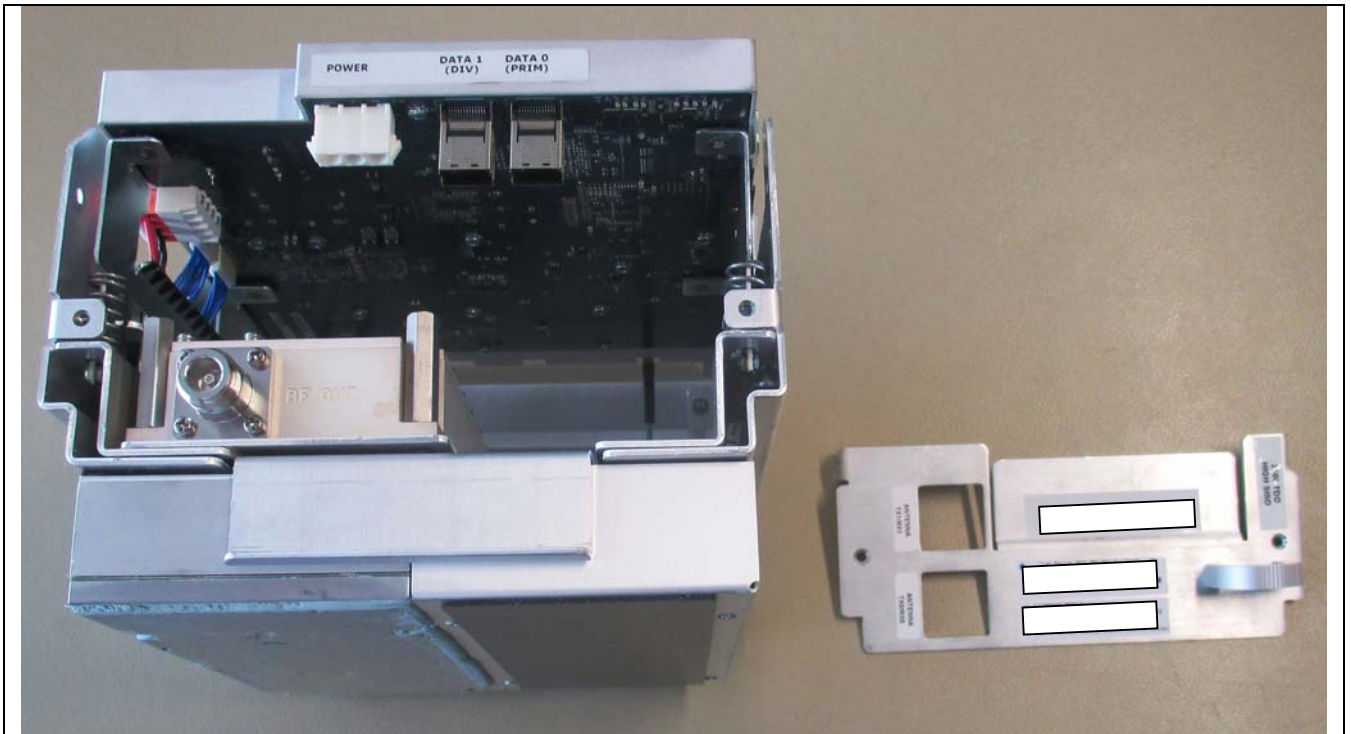
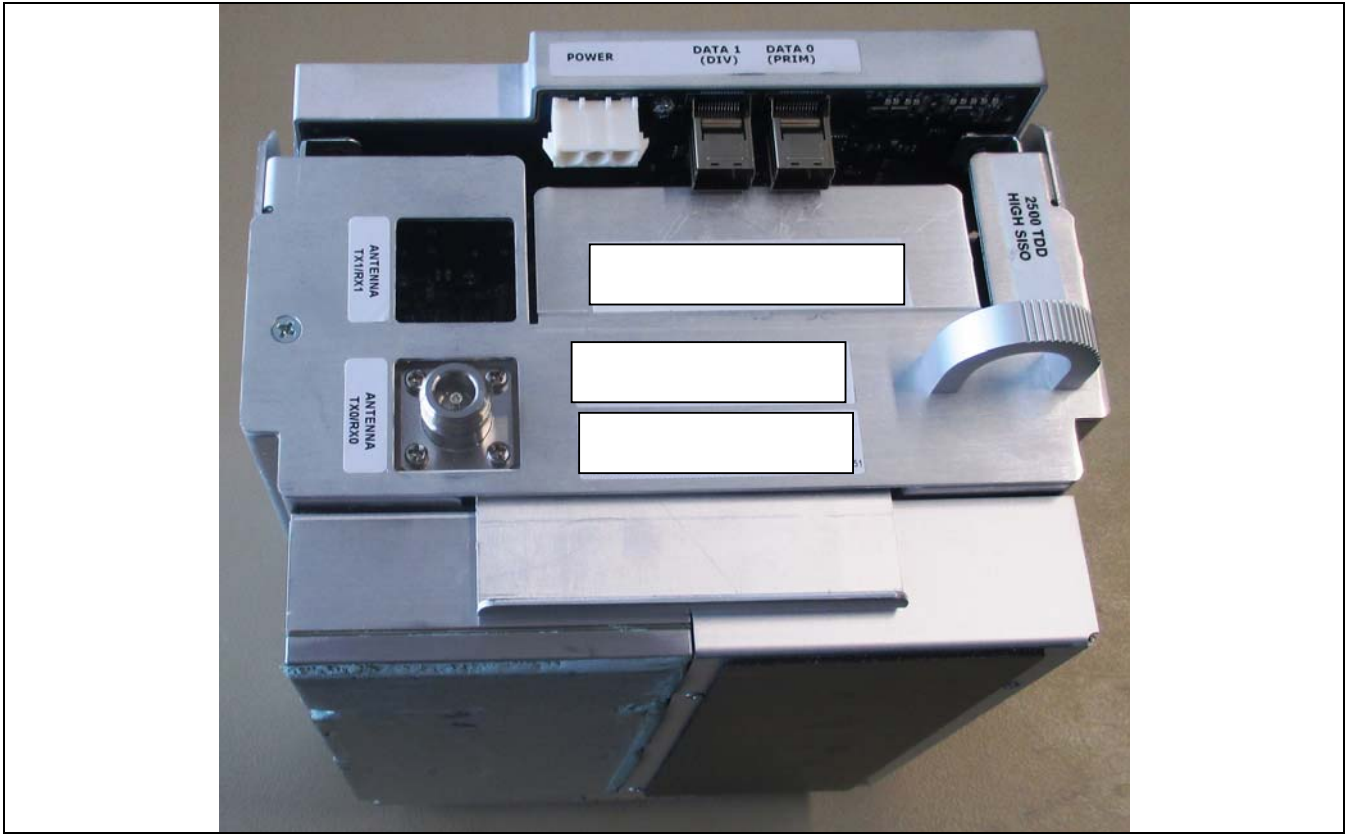
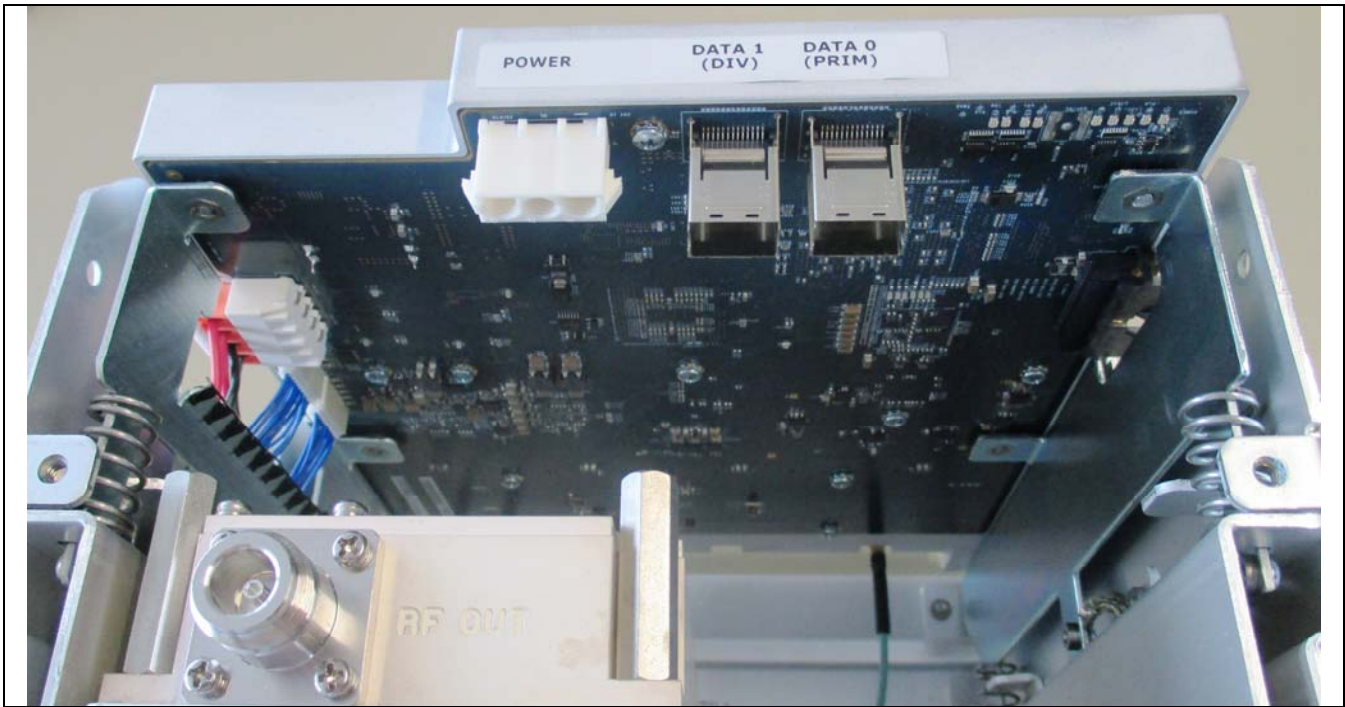


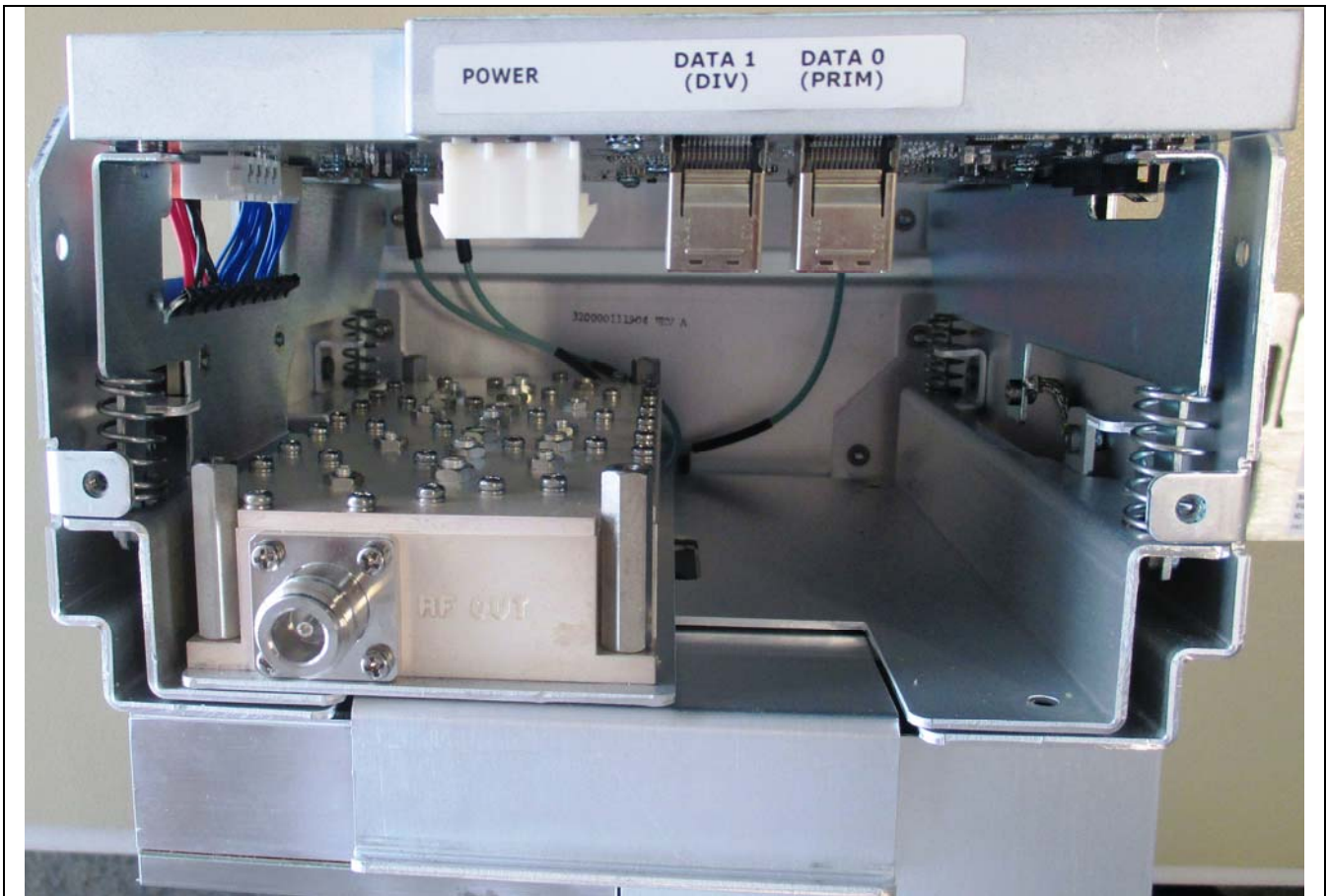
Internal Photos
Prism 20 Watt 2.5 GHz TDD SISO High Band HDM







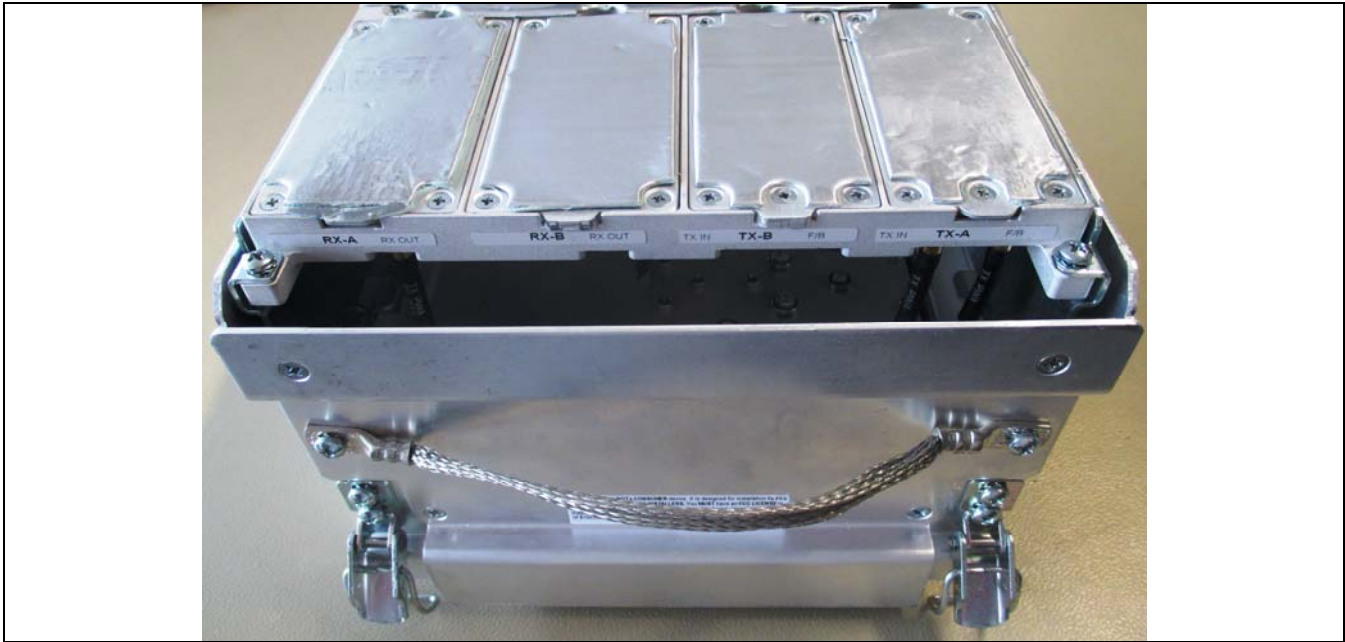
Motherboard



Filter



LPA (Amplifier)

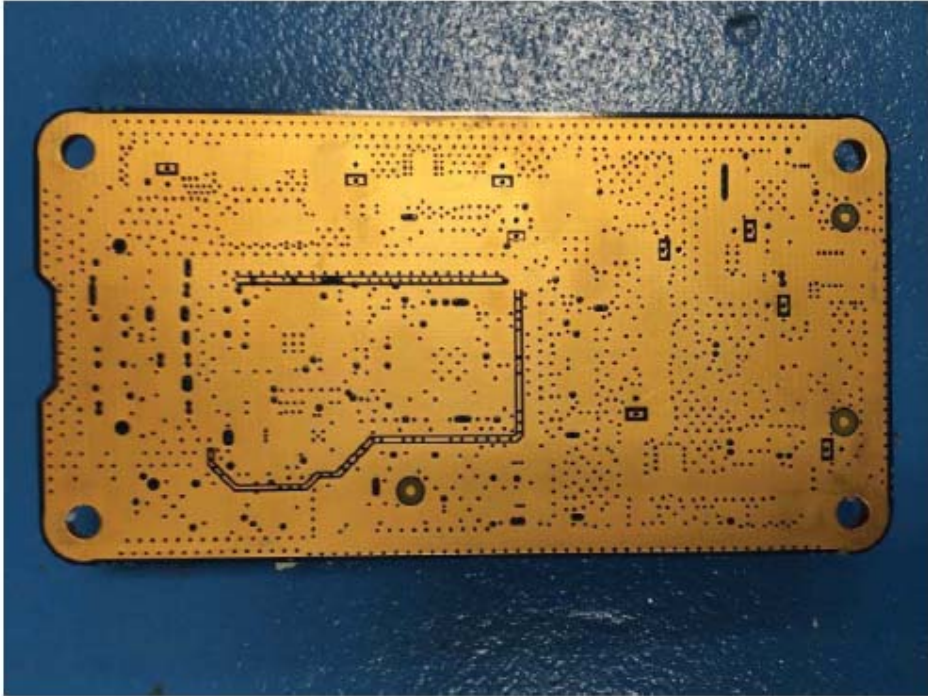


Rx/Tx Cards

Prism 20 Watt 2.5 GHz TDD SISO High Band HDM FWP-T4ST000MOD-H Internal Photos

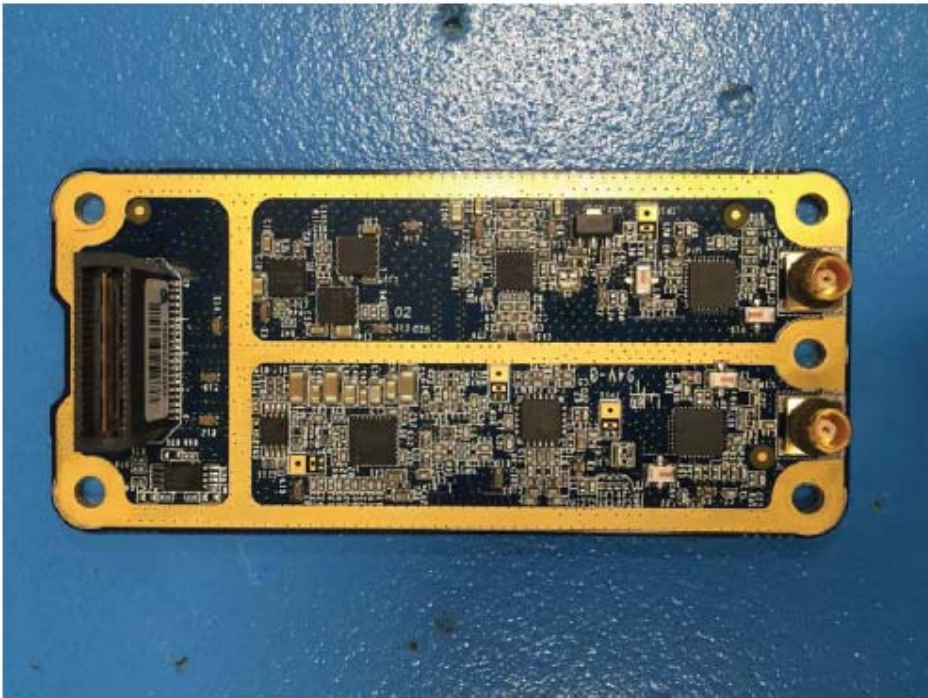


RX Card - Front

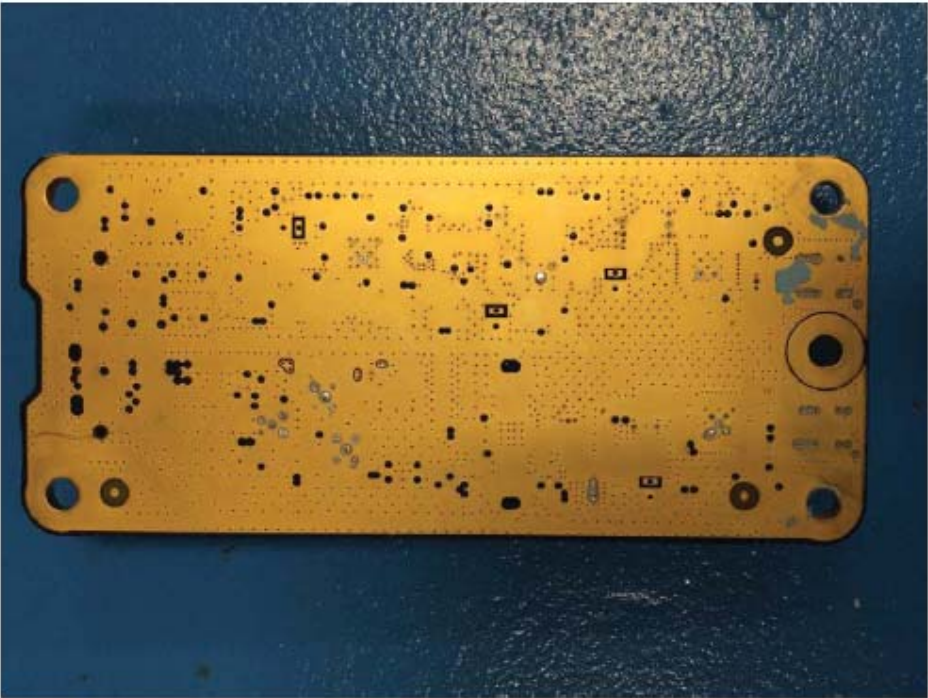


RX Card - Back

Prism 20 Watt 2.5 GHz TDD SISO High Band HDM FWP-T4ST000MOD-H Internal Photos

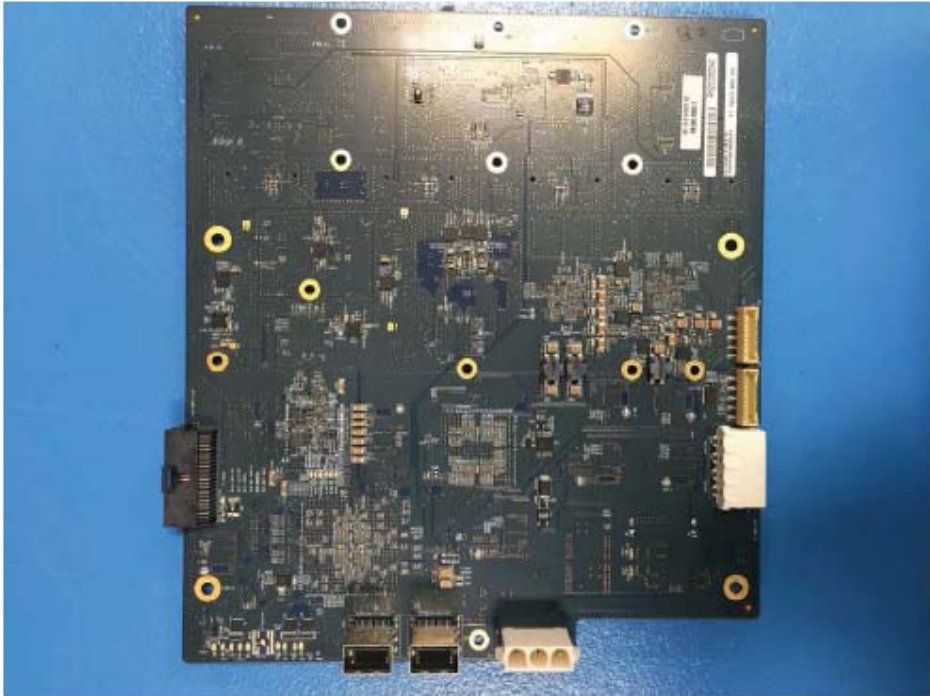


TX Card – Front

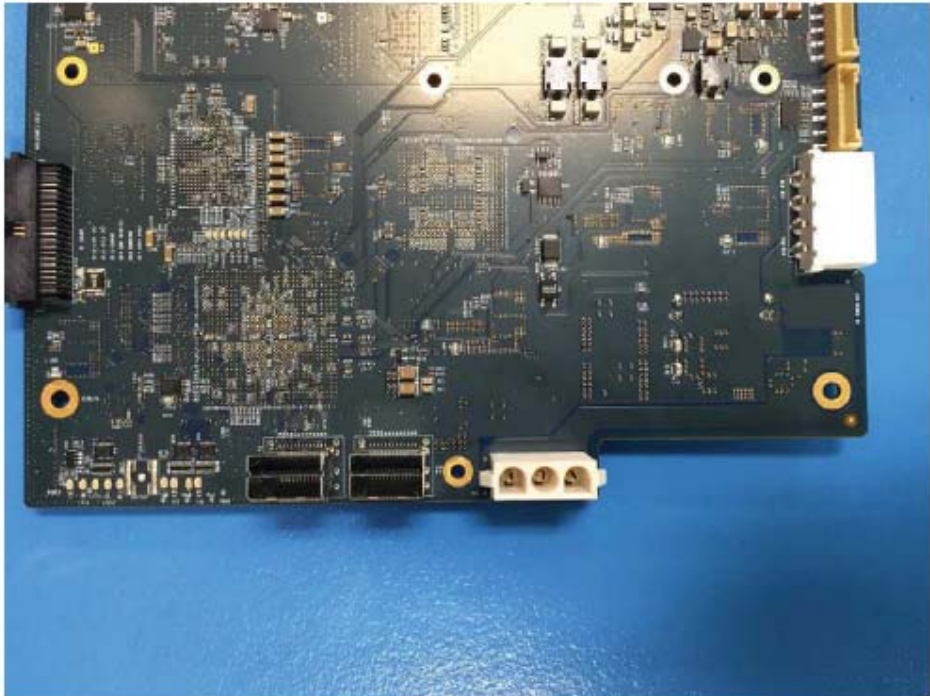


TX Card - Back

Prism 20 Watt 2.5 GHz TDD SISO High Band HDM FWP-T4ST000MOD-H Internal Photos

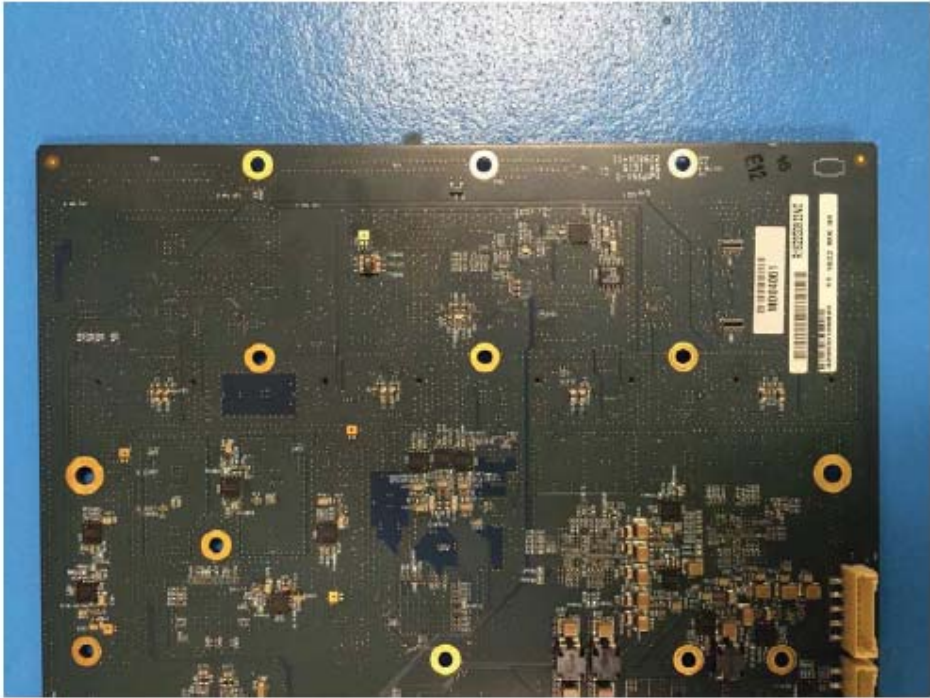


Motherboard - Front



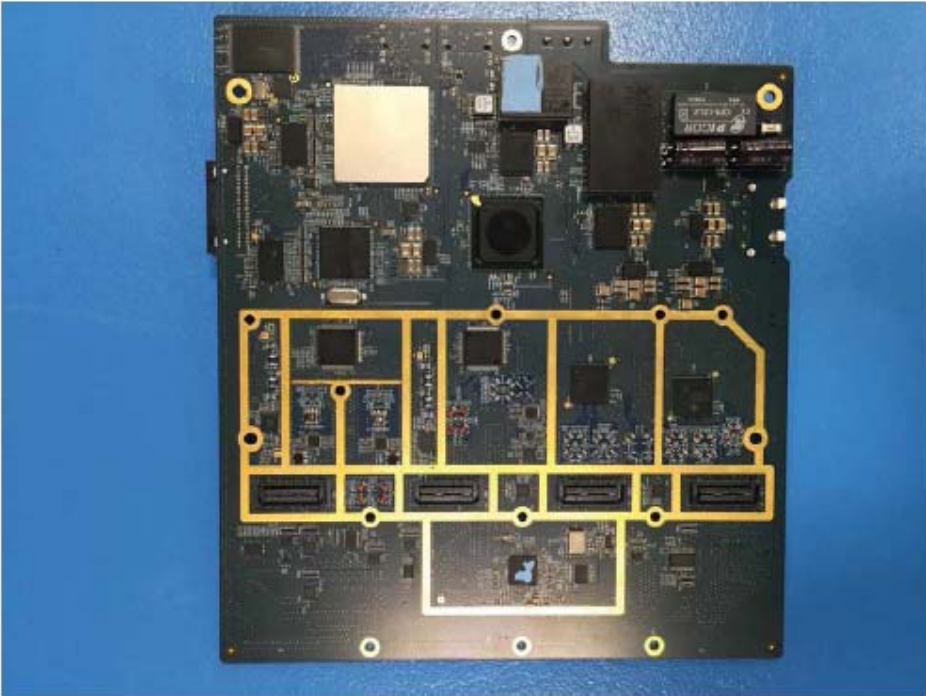
Motherboard - Front #2

Prism 20 Watt 2.5 GHz TDD SISO High Band HDM FWP-T4ST000MOD-H Internal Photos

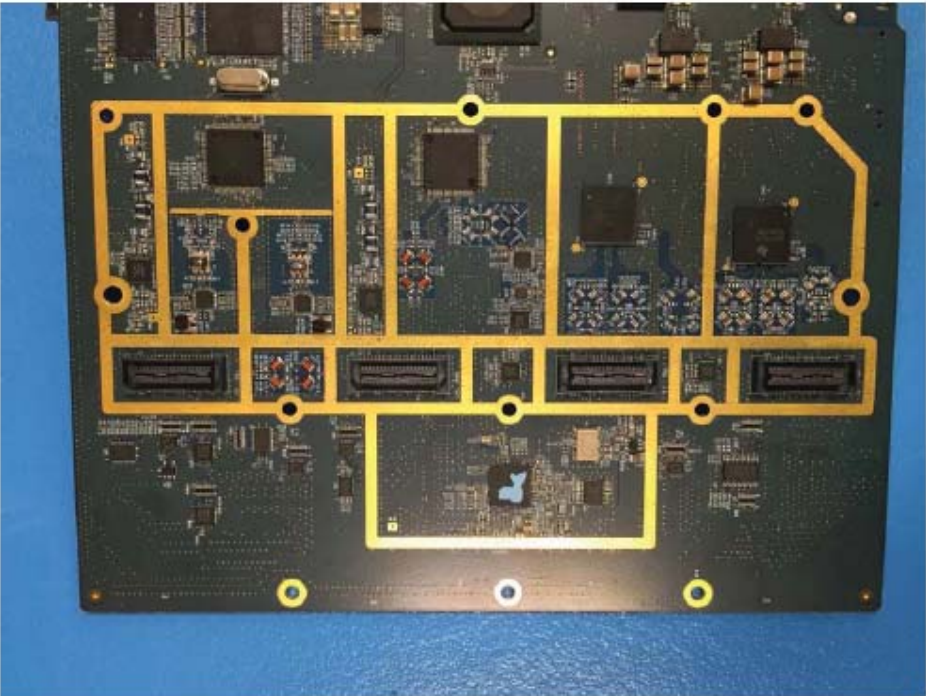


Motherboard – Front #3

Prism 20 Watt 2.5 GHz TDD SISO High Band HDM FWP-T4ST000MOD-H Internal Photos



Motherboard - Back



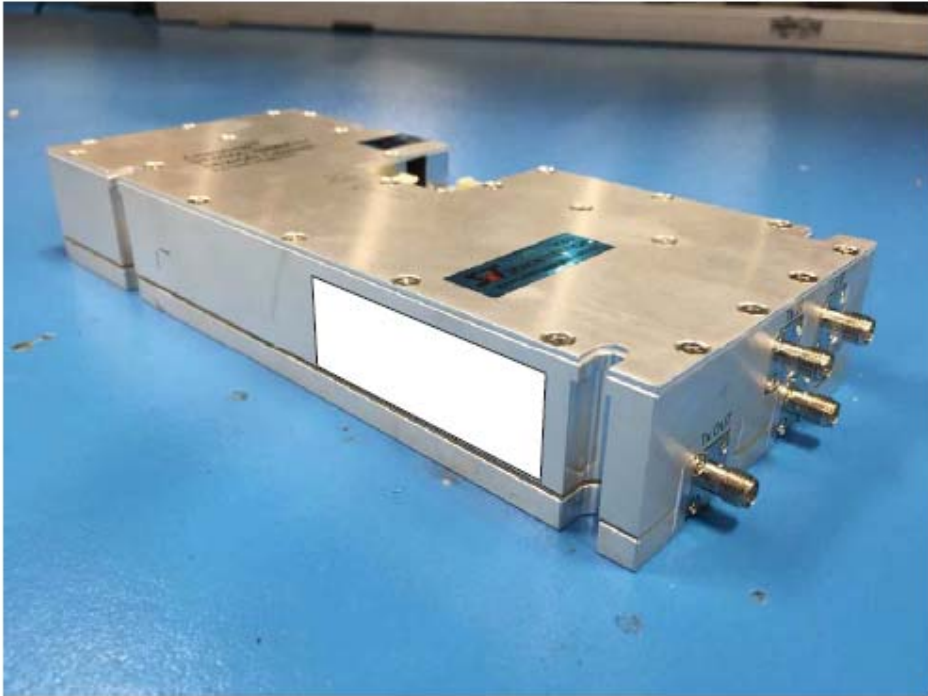
Motherboard - Back #2

Prism 20 Watt 2.5 GHz TDD SISO High Band HDM FWP-T4ST000MOD-H Internal Photos

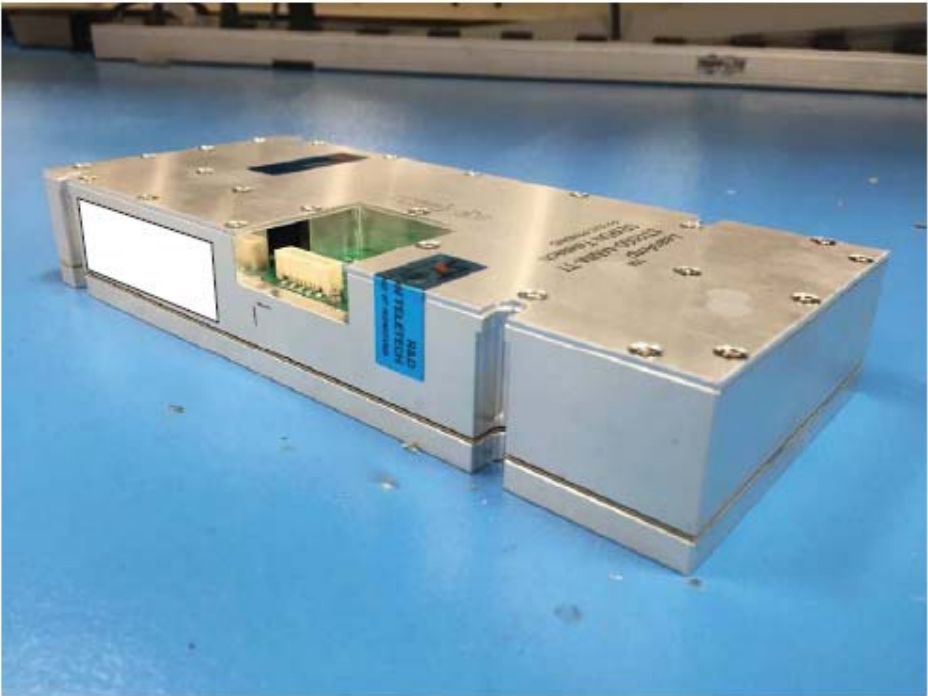


Motherboard – Back #3

Prism 20 Watt 2.5 GHz TDD SISO High Band HDM FWP-T4ST000MOD-H Internal Photos



LPA

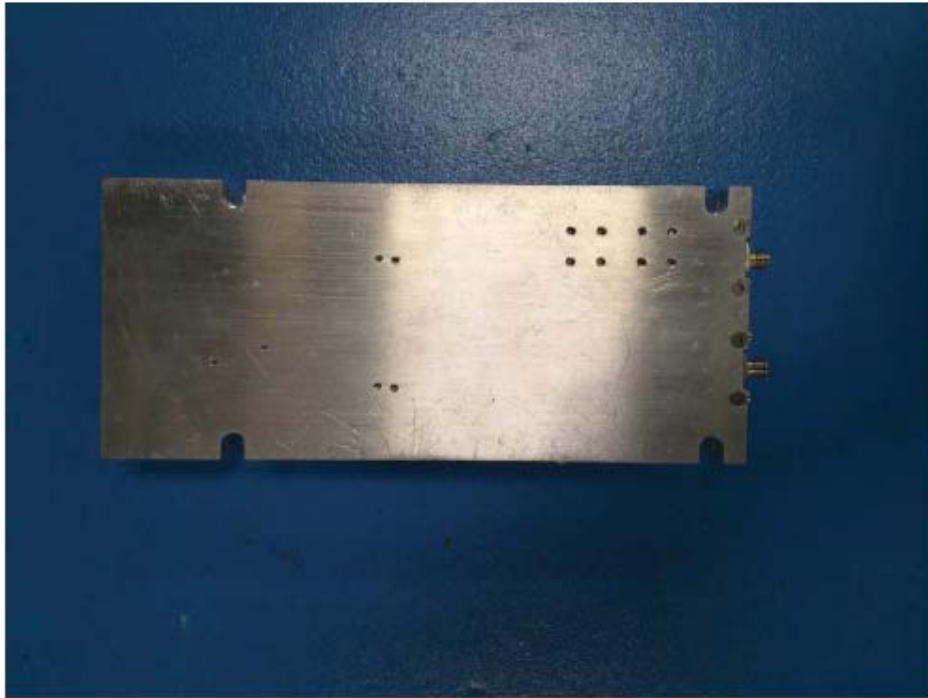


LPA

Prism 20 Watt 2.5 GHz TDD SISO High Band HDM FWP-T4ST000MOD-H Internal Photos

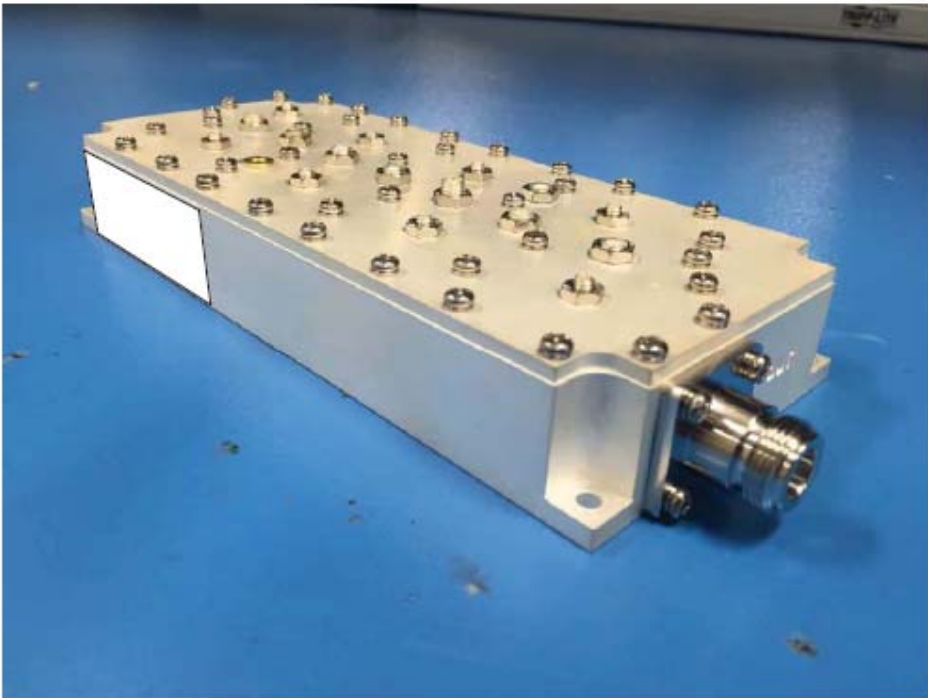


LPA

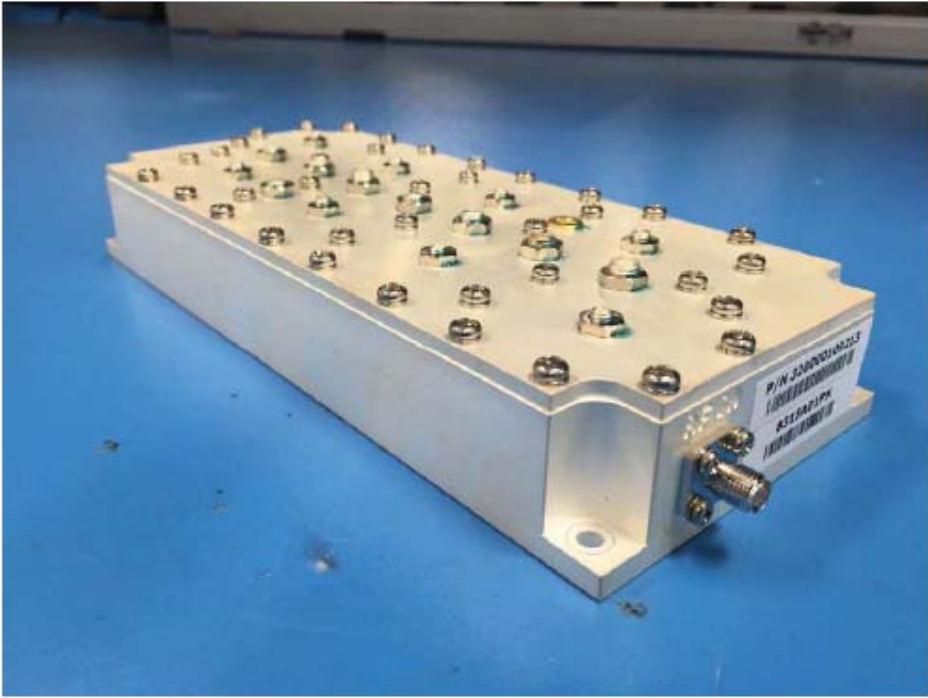


LPA

Prism 20 Watt 2.5 GHz TDD SISO High Band HDM FWP-T4ST000MOD-H Internal Photos

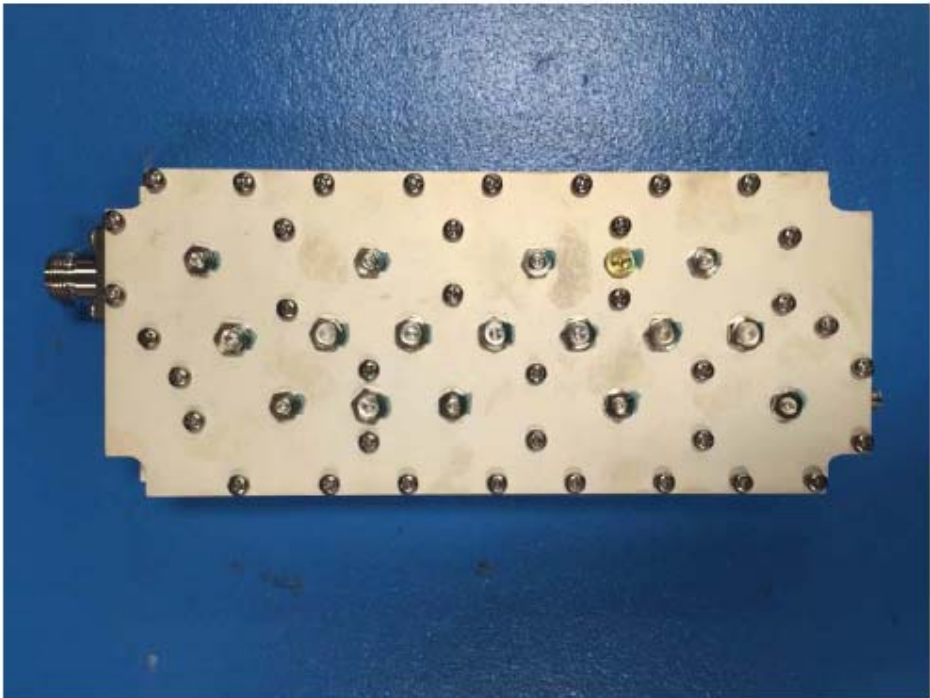


Filter



Filter

Prism 20 Watt 2.5 GHz TDD SISO High Band HDM FWP-T4ST000MOD-H Internal Photos



Filter



Filter



Filter