



Model : KHW01401A
Freq : 2600MHz ~ 2690MHz
Pout : 14W
S/N :

REMOVAL

RF OUT ▶

I/O ▶

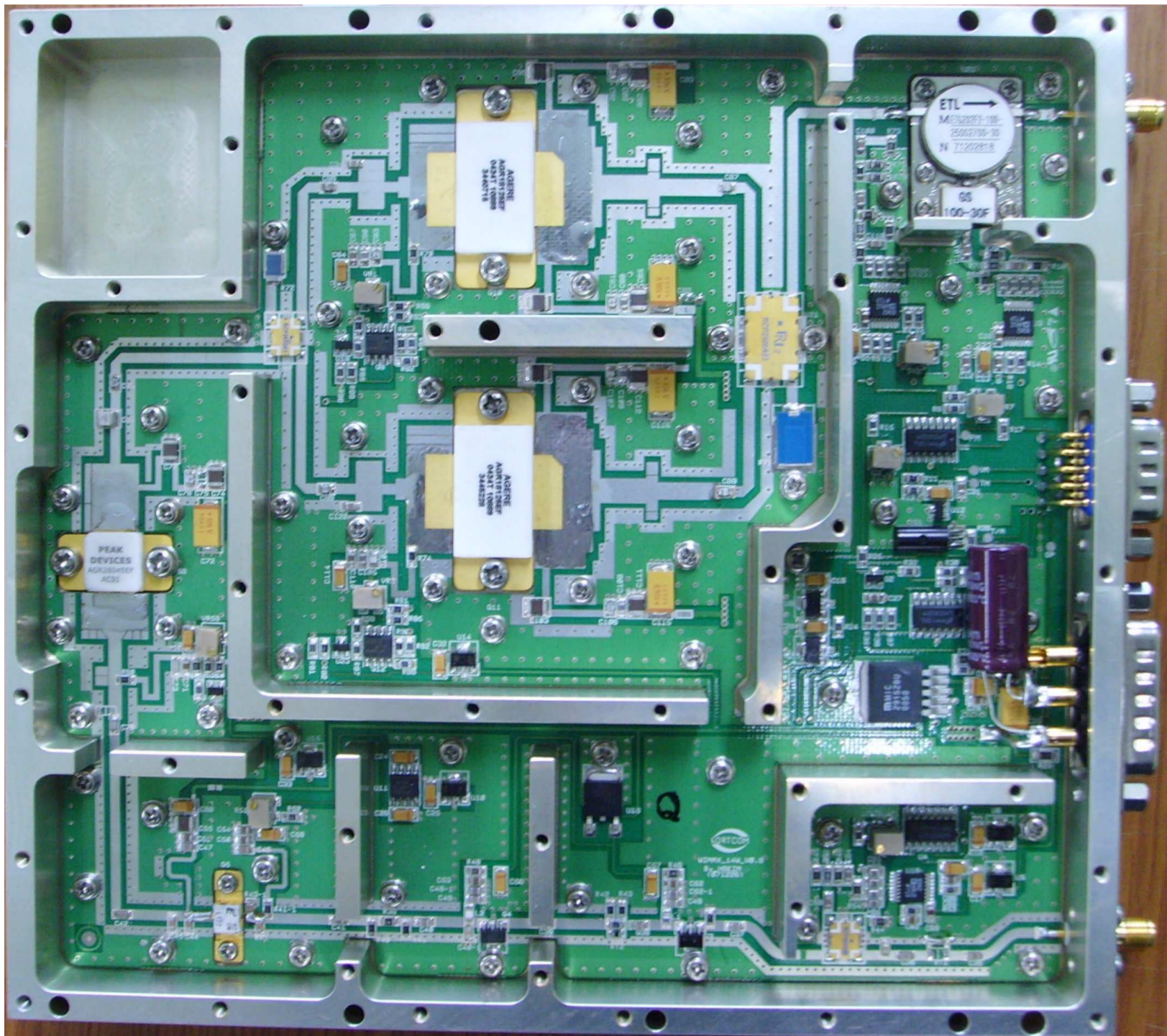
- 1 : GND
- 2 : Over_PWR /A
- 3 : PWR /A
- 4 : Temp_Mon
- 5 : Over_Temp /A
- 6 : En / Disable
- 7 : Overpower_d/d Indication
- 8 : PWR_Det
- 9 : NC

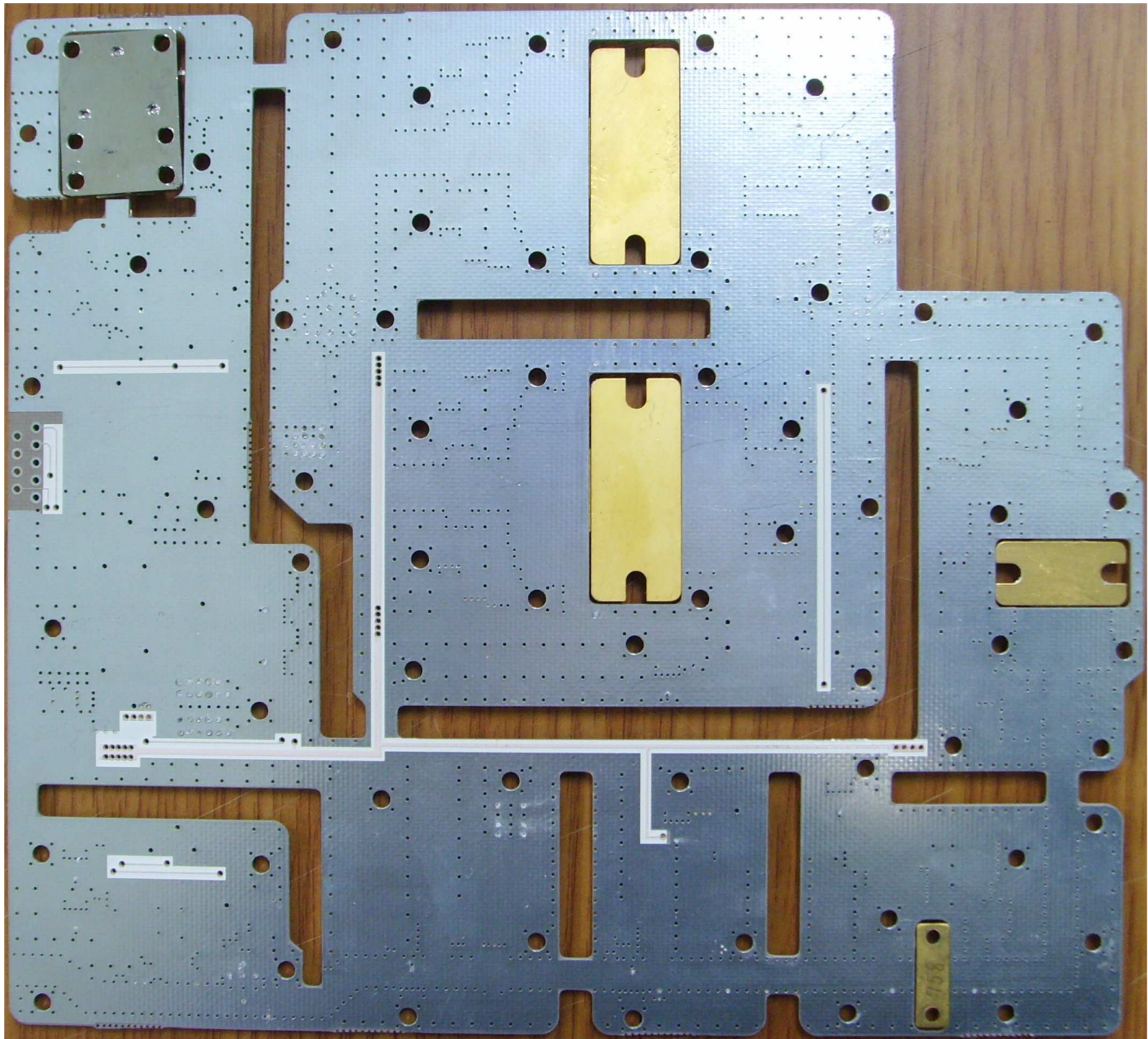
GND ▶

+27Vdc ▶

RF IN ▶

REMOVAL





ANT

KORTCOM

Model: WiMAX RF SWITCH
Module No: KSW010B8026K

S/N:

RF1

TTL
NC
+5V
GND
-27V

RF2

WARRANTY
Korea Telecom
Compo