

REV	ECO	DWN	DATE
A	20108525	JSP	26-DEC-01

1.0 SCOPE

THIS SPECIFICATION DEFINES THE REQUIREMENTS FOR AN ADHESIVE BACKED LABEL.

2.0 APPLICABLE DOCUMENTS

2.1 ORDER OF PRECEDENCE

IN CASE OF CONFLICT, THE FOLLOWING ORDER OF PRECEDENCE SHALL APPLY:

- A. PURCHASE ORDER
- B. THIS SPECIFICATION
- C. REFERENCE DOCUMENTS

2.2 REFERENCE DOCUMENTS

THE FOLLOWING DOCUMENTS FORM A PART OF THIS SPECIFICATION TO THE EXTENT SPECIFIED HEREIN. THE LATEST ISSUE IN EFFECT ON THE DATE OF REQUEST FOR QUOTATION SHALL BE USED.

ADC GENERIC LABEL SPECIFICATION 1048270

3.0 REQUIREMENTS

3.1 PHYSICAL DIMENSIONS: PER FIGURE 1 ON SHEET 2

3.2 MATERIALS

3.2.1 BASE STOCK:

TYPE: POLYESTER  
 MATERIAL THICKNESS: .002 ± .001  
 COLOR: MATTE WHITE

3.2.2 ADHESIVE:

TYPE: PERMANENT ACRYLIC-BASED PRESSURE SENSITIVE  
 COLOR: CLEAR  
 MATERIAL THICKNESS: .002 ± .001

3.2.3 PRINTING:

COLOR: BLACK.  
 MARKING: PER FIGURE 1, ARTWORK TO BE SUPPLIED BY VENDOR.

3.3 FINISHING: PARTS SHALL BE KISS CUT PER FIGURE 1, AND SUPPLIED ON A ROLL.

3.4 ENVIRONMENTAL REQUIREMENTS

3.4.1 APPLICATION TEMPERATURE: +10°F MIN. +40°C MAX.  
 (+50°F MIN. +104°F MAX.)

3.4.2 SERVICE TEMPERATURE: -55°C MIN. +85°C MAX.  
 (-67°F MIN. +185°F MAX.)

3.4.3 STORAGE TEMPERATURE: -55°C MIN. +85°C MAX.  
 (-67°F MIN. +185°F MAX.)

3.4.4 SHELF LIFE: 1 YEAR FROM DATE OF PURCHASE

4.0 QUALITY ASSURANCE PROVISIONS

4.1 MANUFACTURING INSPECTION

THE MANUFACTURER SHALL PERFORM AUDITS TO ENSURE 100% FUNCTIONALITY OF ALL RECEIVED PARTS. ADDITIONAL TESTING AND INSPECTIONS SHALL BE PERFORMED AS NEEDED TO ENSURE THAT ALL REQUIREMENTS ARE MET.

4.2 QUALITY CONFORMANCE INSPECTION

BUYER RESERVES THE RIGHT TO RETURN AT THE MANUFACTURER'S EXPENSE ANY NONCONFORMING MATERIALS OR LOTS WHICH DO NOT MEET SAMPLING INSPECTION REQUIREMENTS.

4.3 DESIGN AND PROCESS CHANGE

NO CHANGES IN MATERIAL DESIGN OR PROCESS WHICH WILL AFFECT FORM, FIT, OR FUNCTION SHALL BE MADE BY THE MANUFACTURER AFTER SAMPLE APPROVAL WITHOUT WRITTEN AUTHORITY FROM THE BUYER. THE TERM "FUNCTION" IMPLIES SECTION 3.0 PARAMETERS AND ADDITIONAL OPERATIONAL CHARACTERISTICS NOT SPECIFICALLY OUTLINED IN THIS SPECIFICATION.

5.0 PACKAGING REQUIREMENTS

5.1 SHIPPING CONTAINER MARKING

INTERMEDIATE PACKAGING SHALL BE MARKED WITH THE FOLLOWING AS A MINIMUM:

- 1. MANUFACTURER'S NAME AND/OR LOGO
- 2. MANUFACTURER'S PART NUMBER
- 3. QUANTITY
- 4. PURCHASE ORDER NUMBER

5.2 PACKAGING MATERIALS

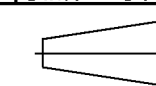
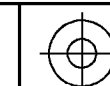
PRODUCT WILL BE PACKED IN A MANNER THAT WILL PROVIDE CHEMICALLY INERT PROTECTION FROM DAMAGE DURING SHIPMENT, HANDLING AND STORAGE.

5.3 HANDLING

- 5.3.1 PART SEGREGATION: INDIVIDUAL PART NUMBERS SHALL BE SHIPPED IN SEPERATE PACKAGES.
- 5.3.2 WEIGHT: 40 LBS. MAX PER PACKAGE.



INFORMATION ON THIS DOCUMENT IS PROPRIETARY TO ADC AND SHALL NOT BE USED, COPIED, REPRODUCED OR DISCLOSED IN WHOLE OR IN PART WITHOUT WRITTEN CONSENT OF ADC.		TITLE FCC ID LABAL DIGIVANCE 1900 RIU	
ALL DIMS AND TOLERANCES ARE INCHES UNLESS OTHERWISE SPECIFIED	.XX:±.01 .XXX:±.005 ANGULAR:±1°	C SIZE	DRAWING NUMBER 1212460
DO NOT SCALE DRAWING		ENGR: M. MISKA DWN: J. POOLER	A REV SHT. 1 OF 2



DIMENSIONS IN INCHES  
THIRD ANGLE PROJECTION

FCC ID: F8I-DVICSRIU1900

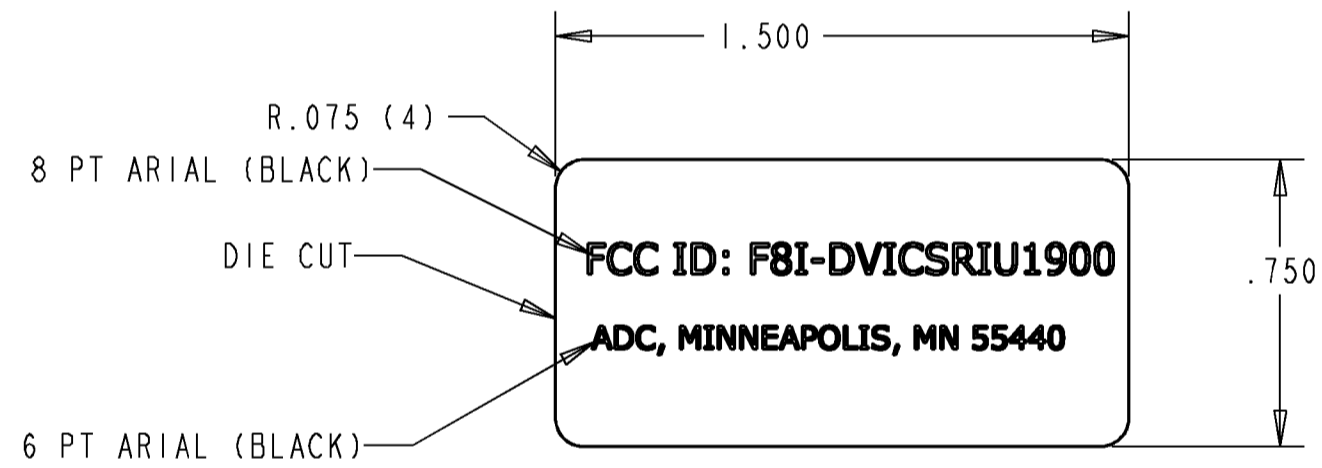
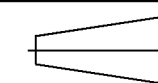


FIGURE 1



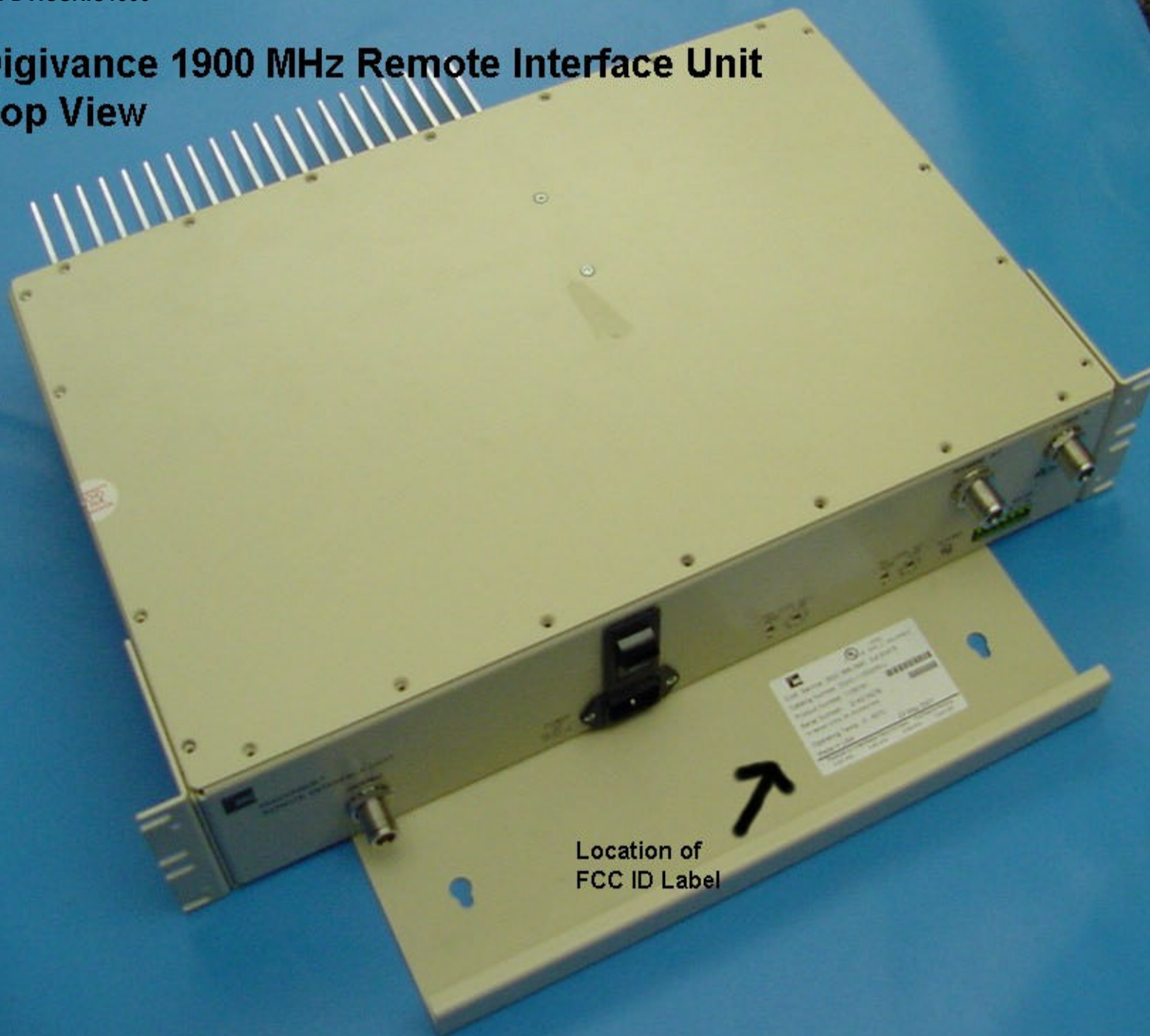
INFORMATION ON THIS DOCUMENT IS PROPRIETARY TO ADC AND SHALL NOT BE USED, COPIED, REPRODUCED OR DISCLOSED IN WHOLE OR IN PART WITHOUT WRITTEN CONSENT OF ADC.		TITLE FCC ID LABEL DIGIVANCE 1900 RIU	
ALL DIMS AND TOLERANCES ARE INCHES UNLESS OTHERWISE SPECIFIED	.XX:±.01 .XXX:±.005 ANGULAR:±1°	C SIZE	DRAWING NUMBER 1212460
DO NOT SCALE DRAWING	ENGR: M. MISKA DWN: J. POOLER	SHT. 2 OF 2	



DIMENSIONS IN INCHES  
THIRD ANGLE PROJECTION

FCC ID: F8I-DVICSRIU1900

# Digivance 1900 MHz Remote Interface Unit Top View



Location of  
FCC ID Label