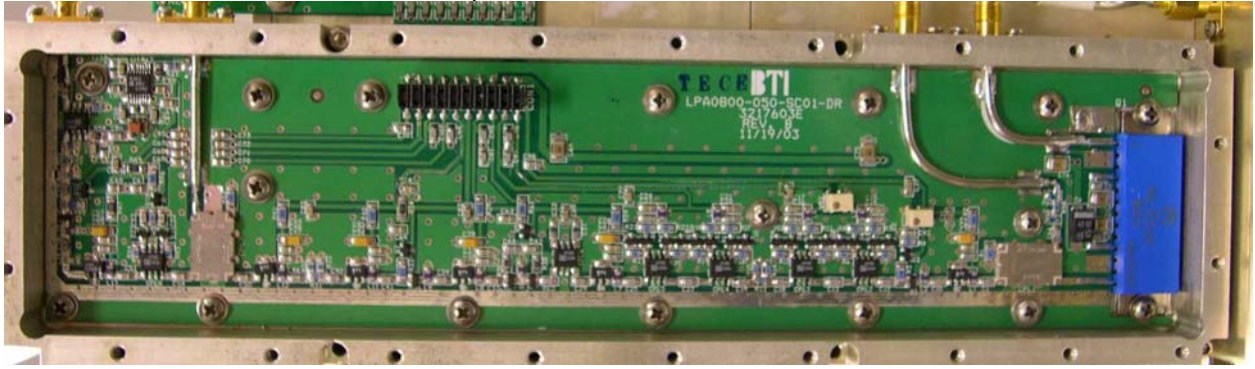
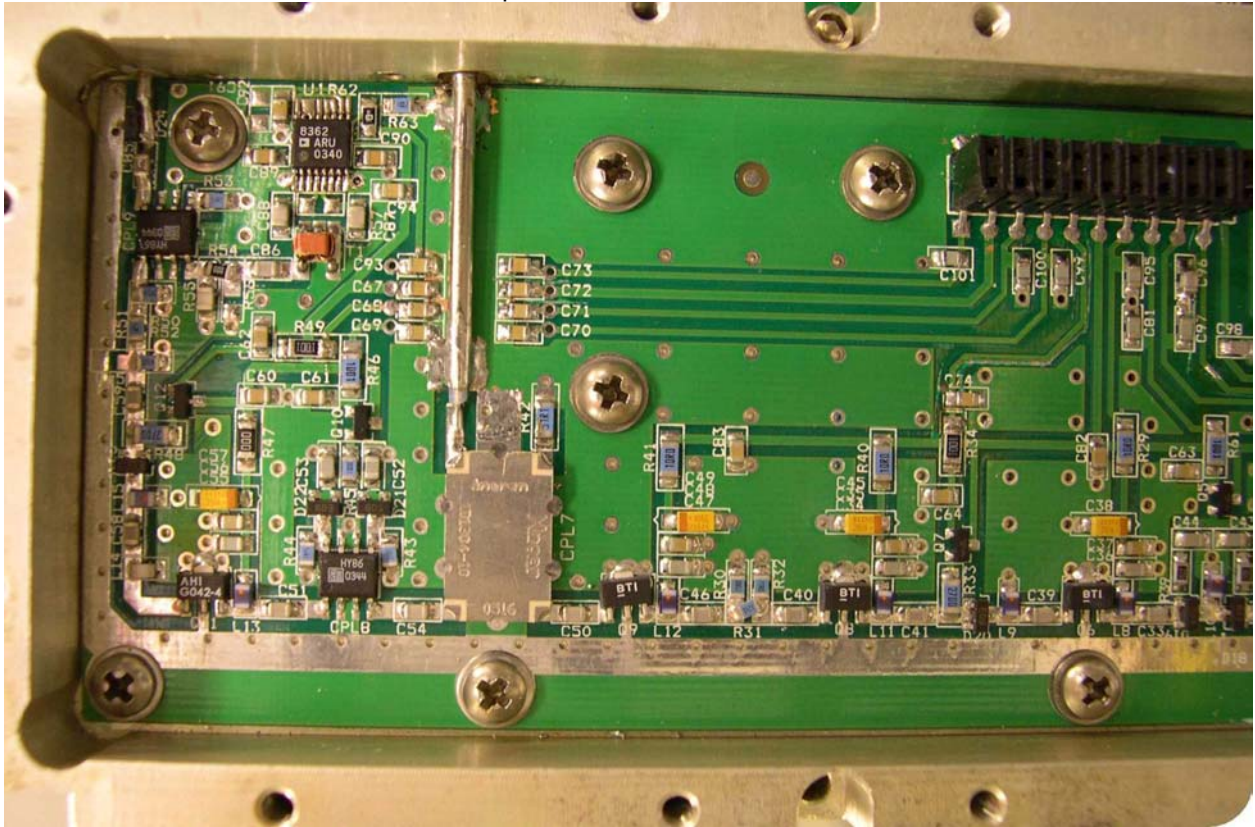


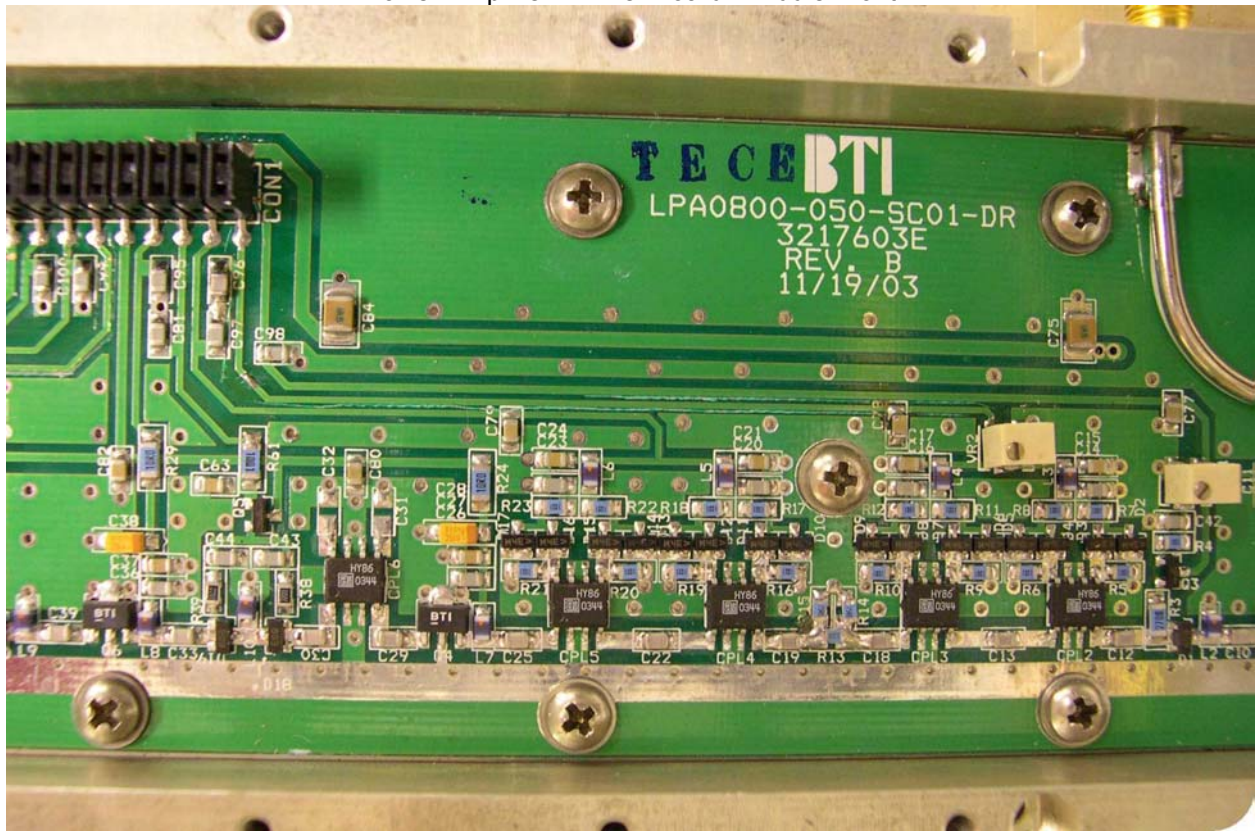
Power Amplifier - Driver Board - Front overview



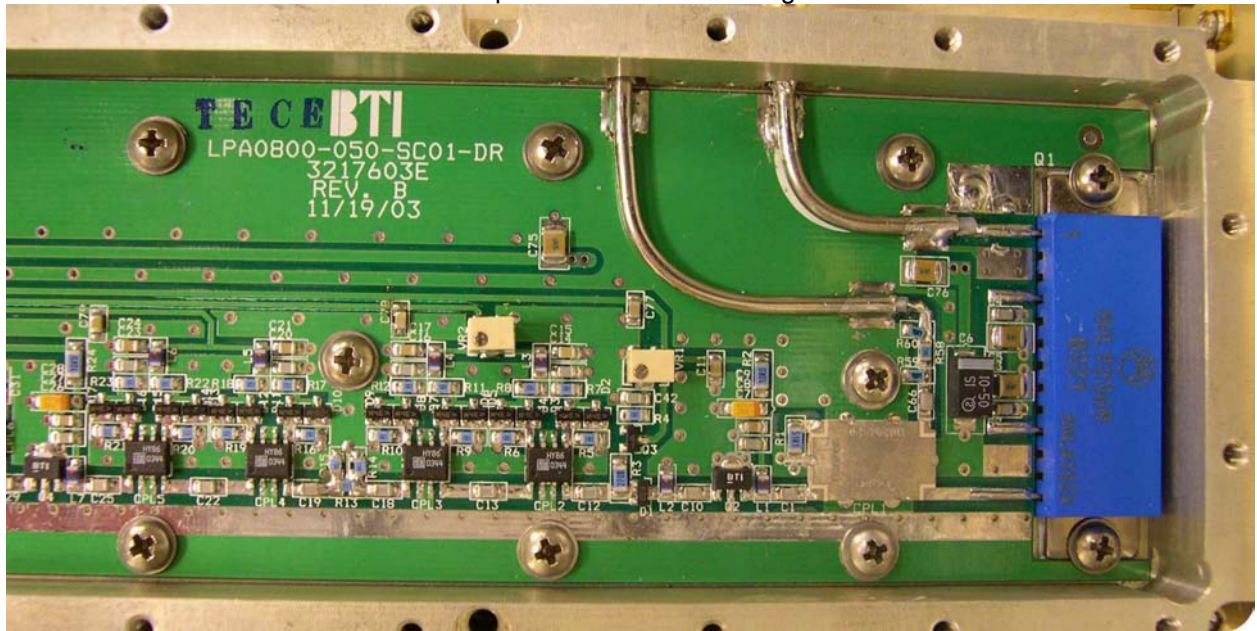
Power Amplifier - Driver Board - Left Front



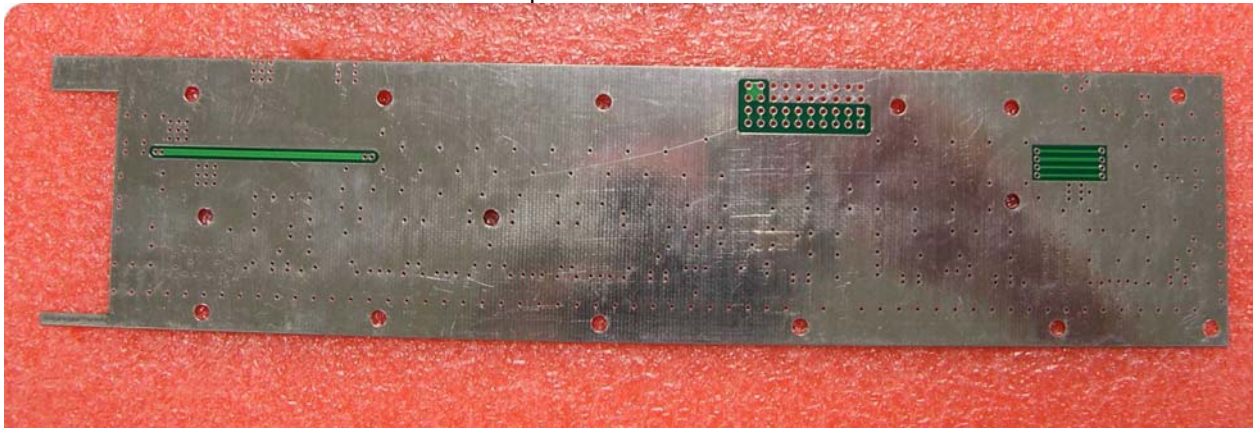
Power Amplifier - Driver Board - Middle Front



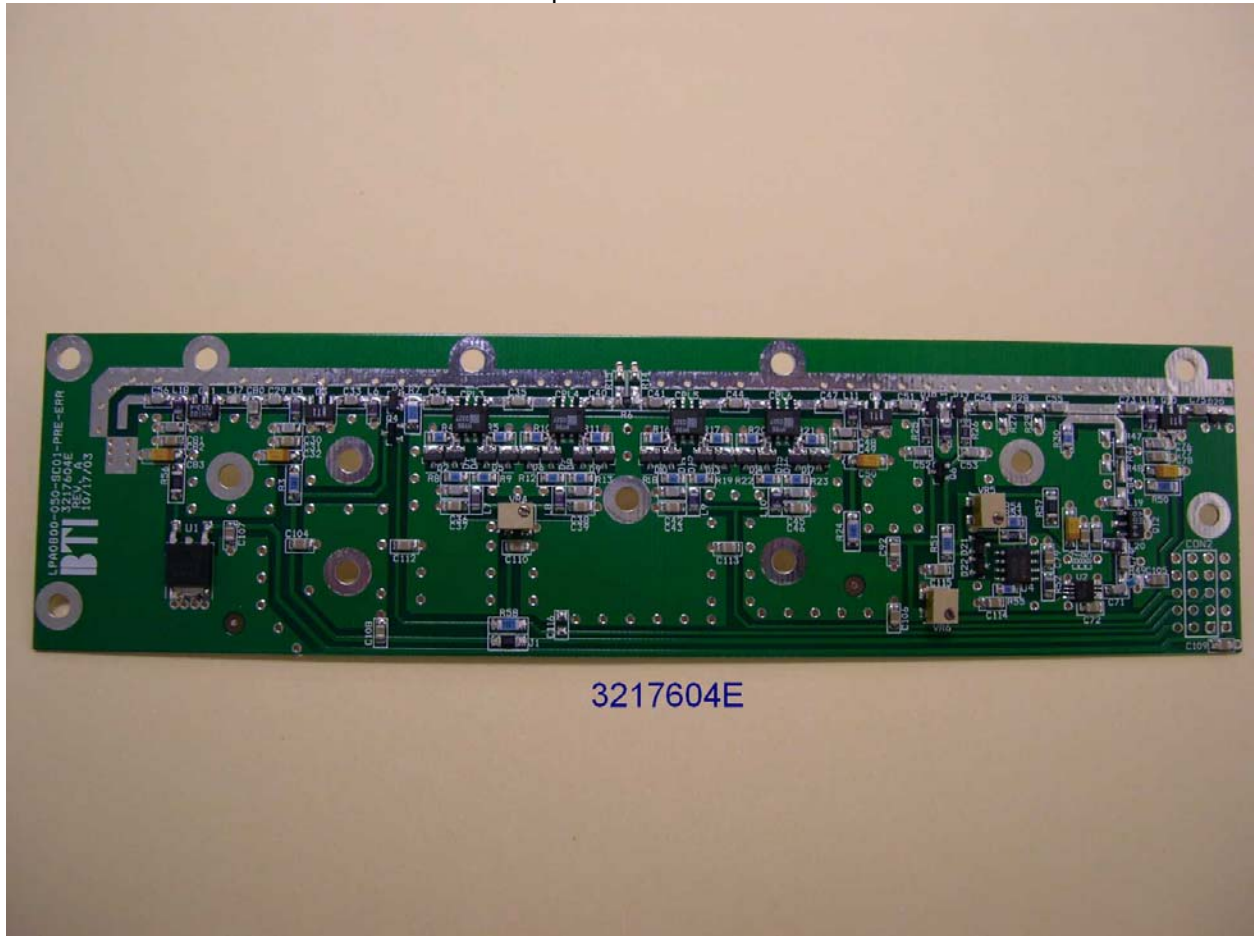
Power Amplifier - Driver Board - Right Front



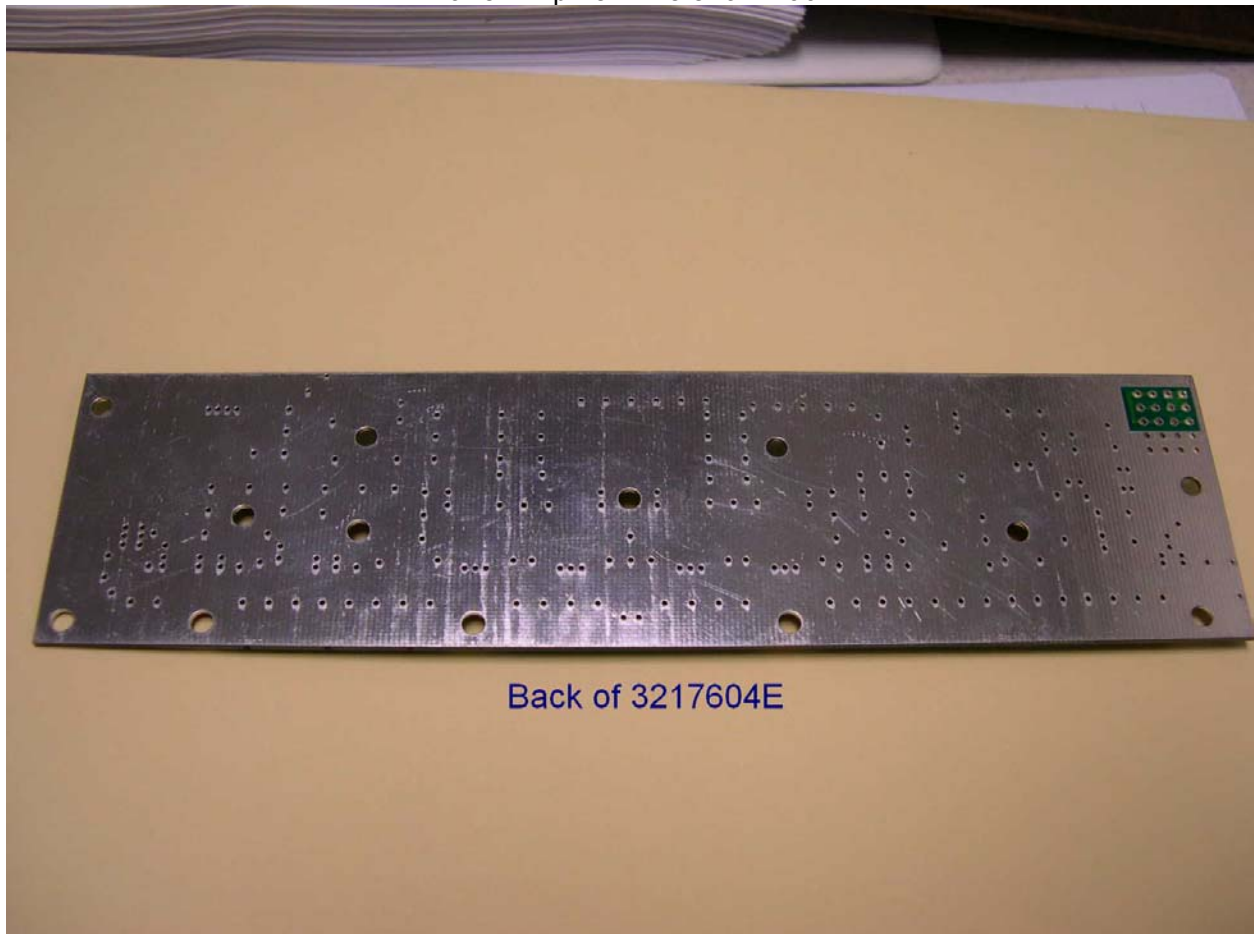
Power Amplifier - Driver Board - Back



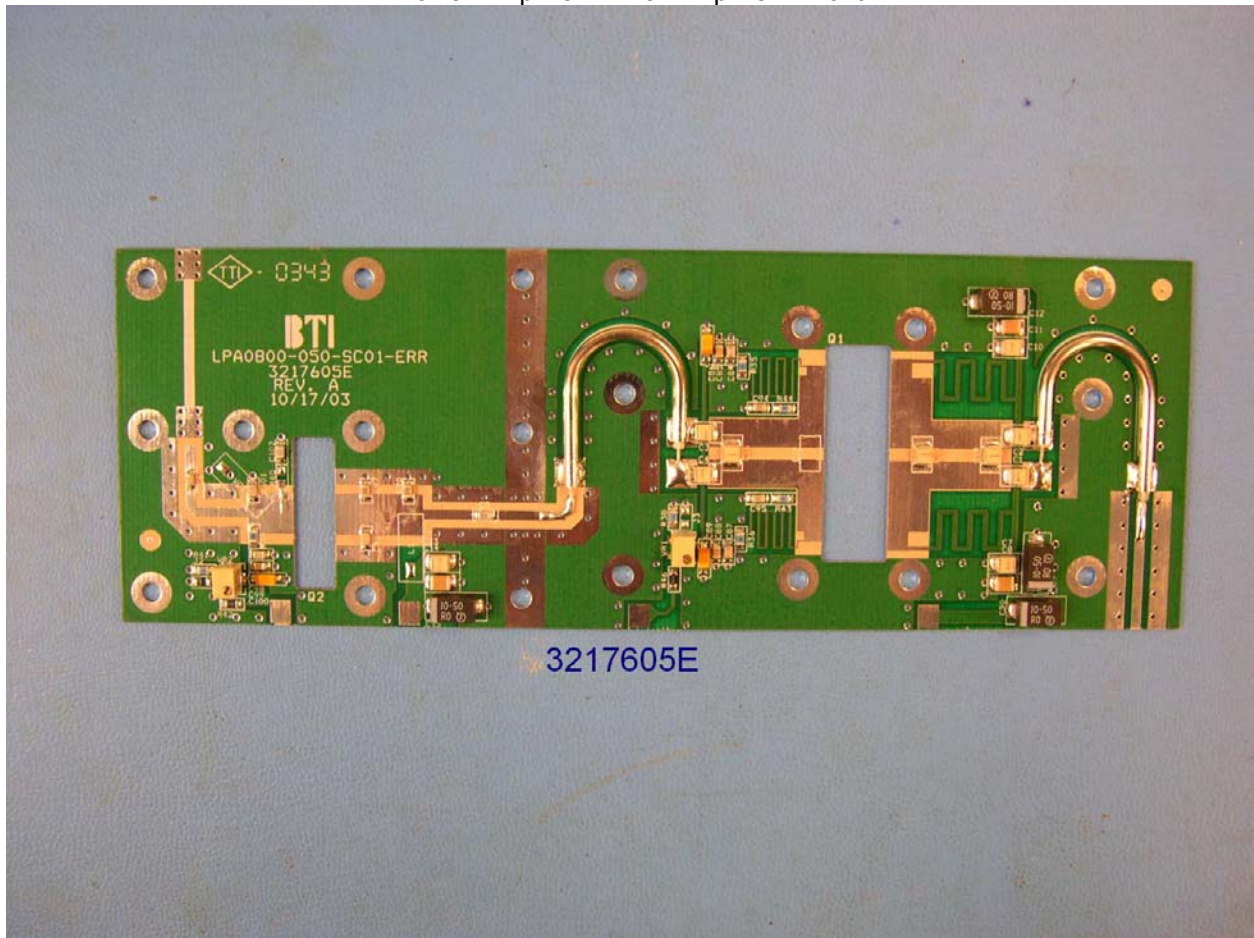
Power Amplifier - Pre-error - Front



Power Amplifier - Pre-error - Back

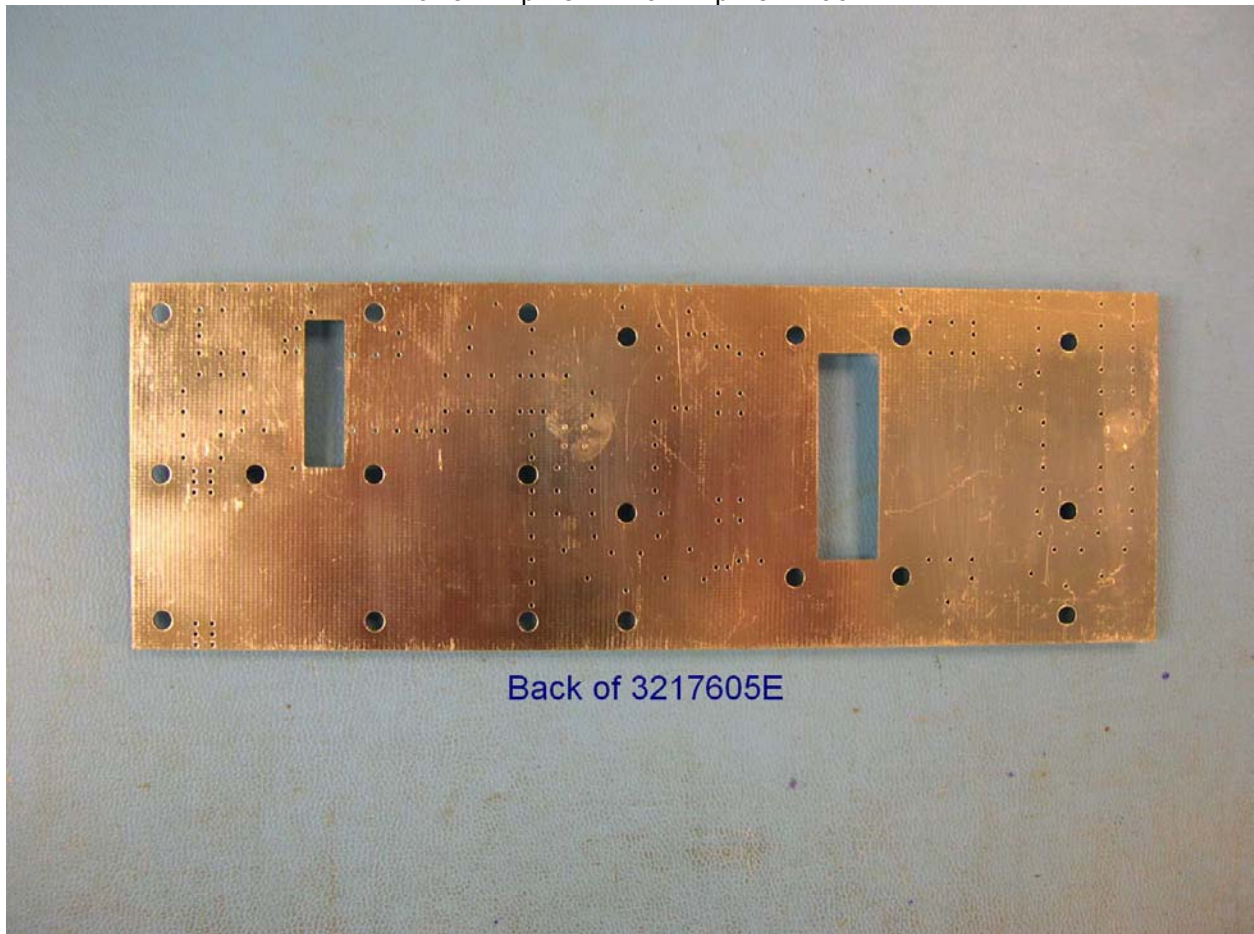


Power Amplifier - Error Amplifier - Front



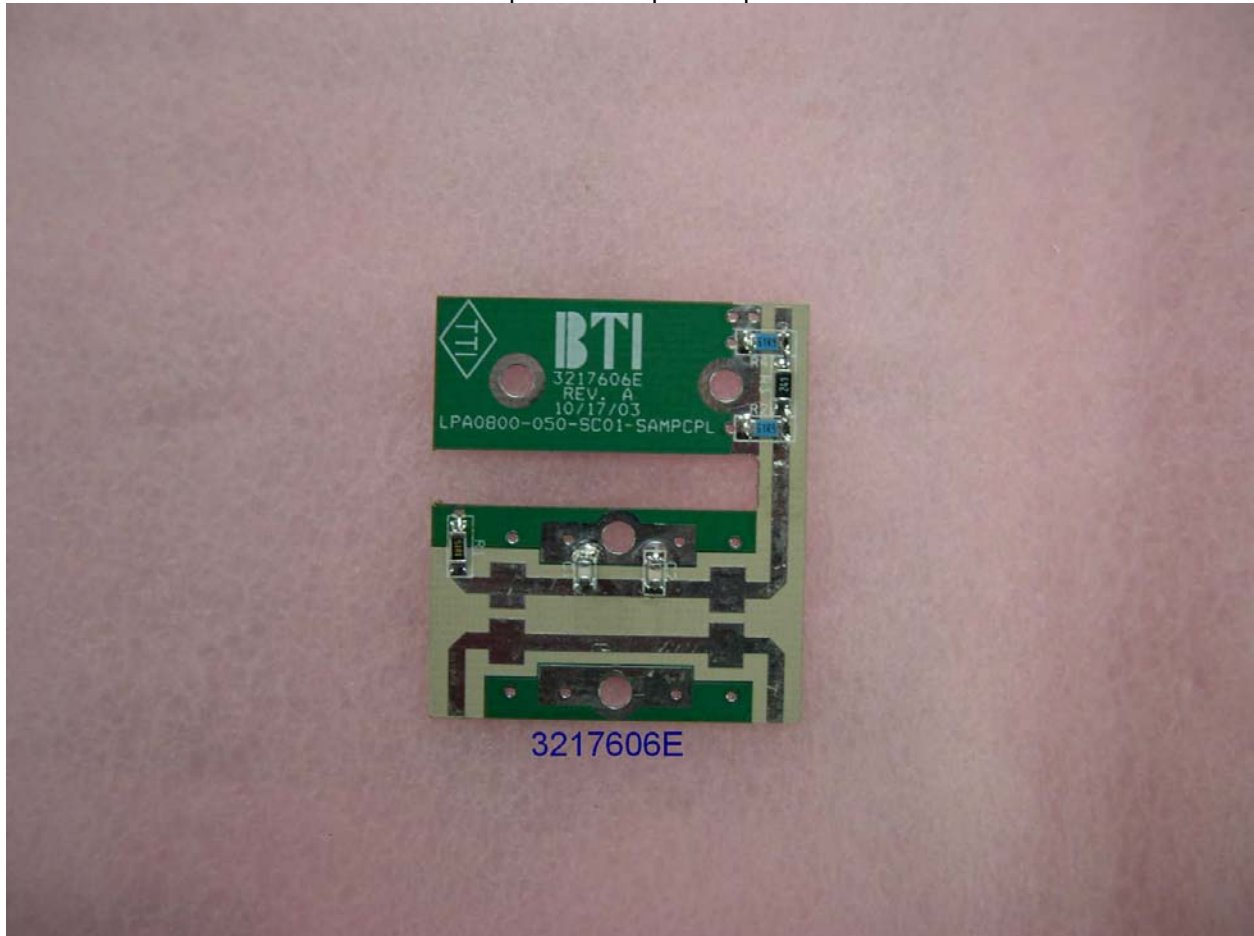
3217605E

Power Amplifier - Error Amplifier - Back



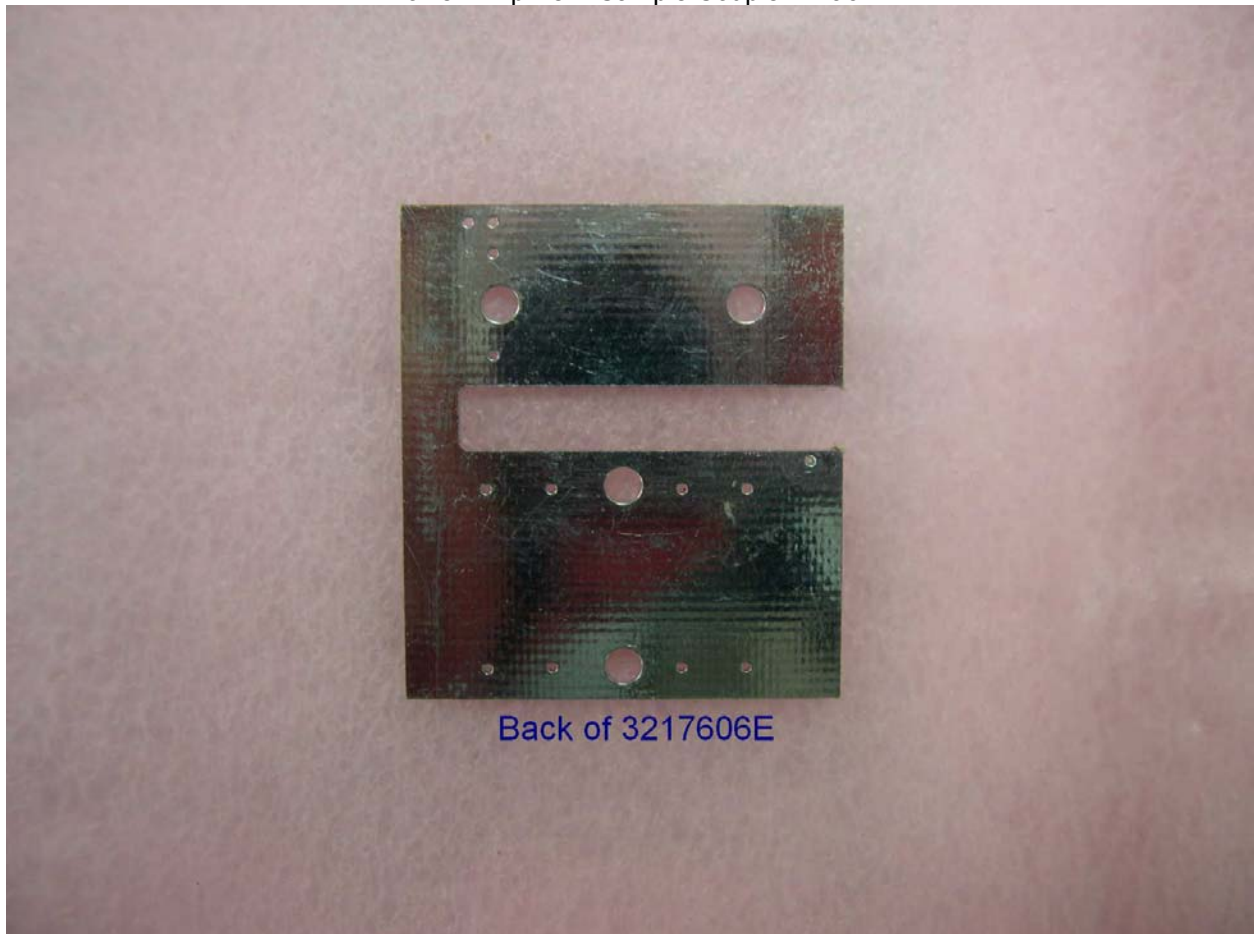
Back of 3217605E

Power Amplifier - Sample Coupler - Front



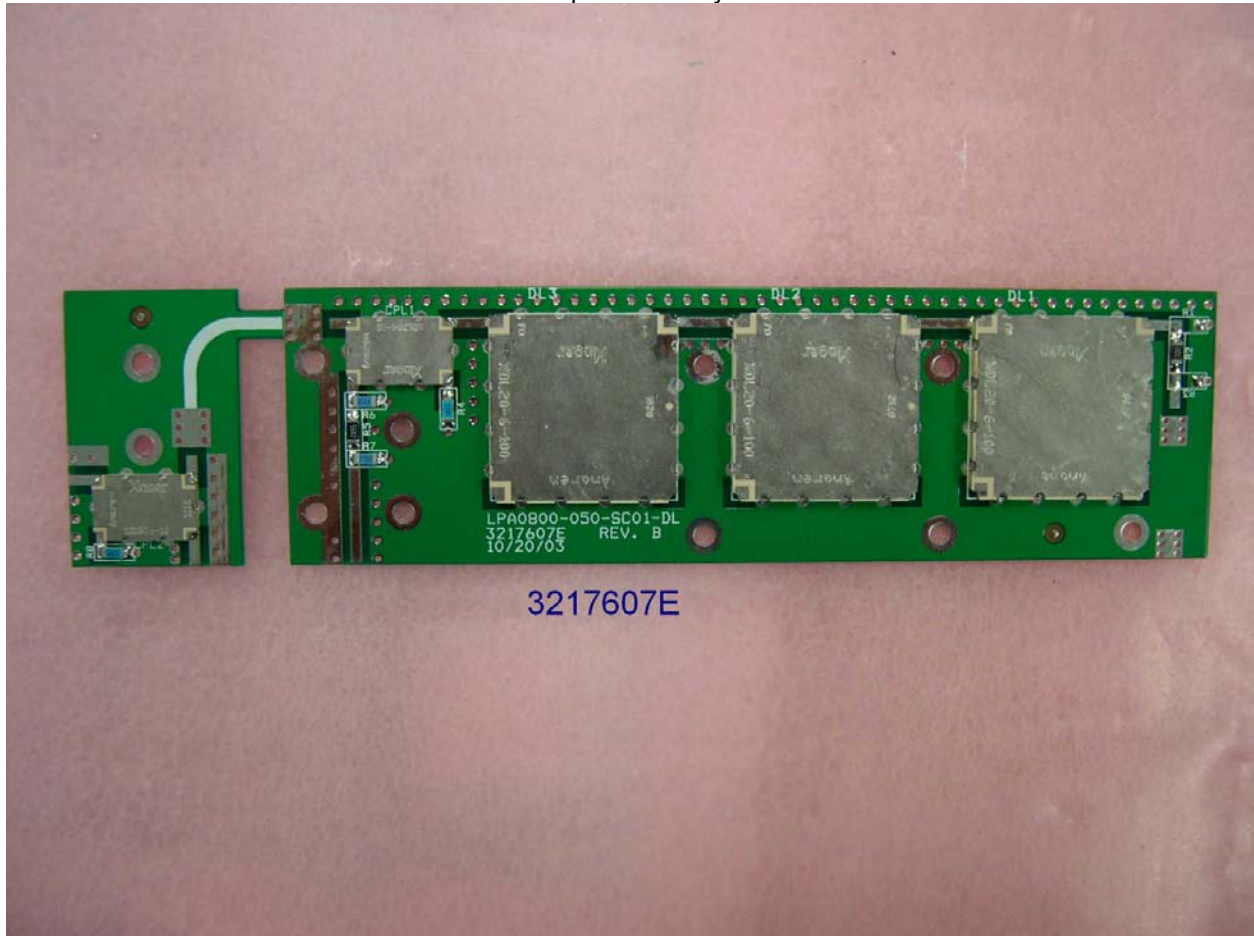
3217606E

Power Amplifier - Sample Coupler - Back



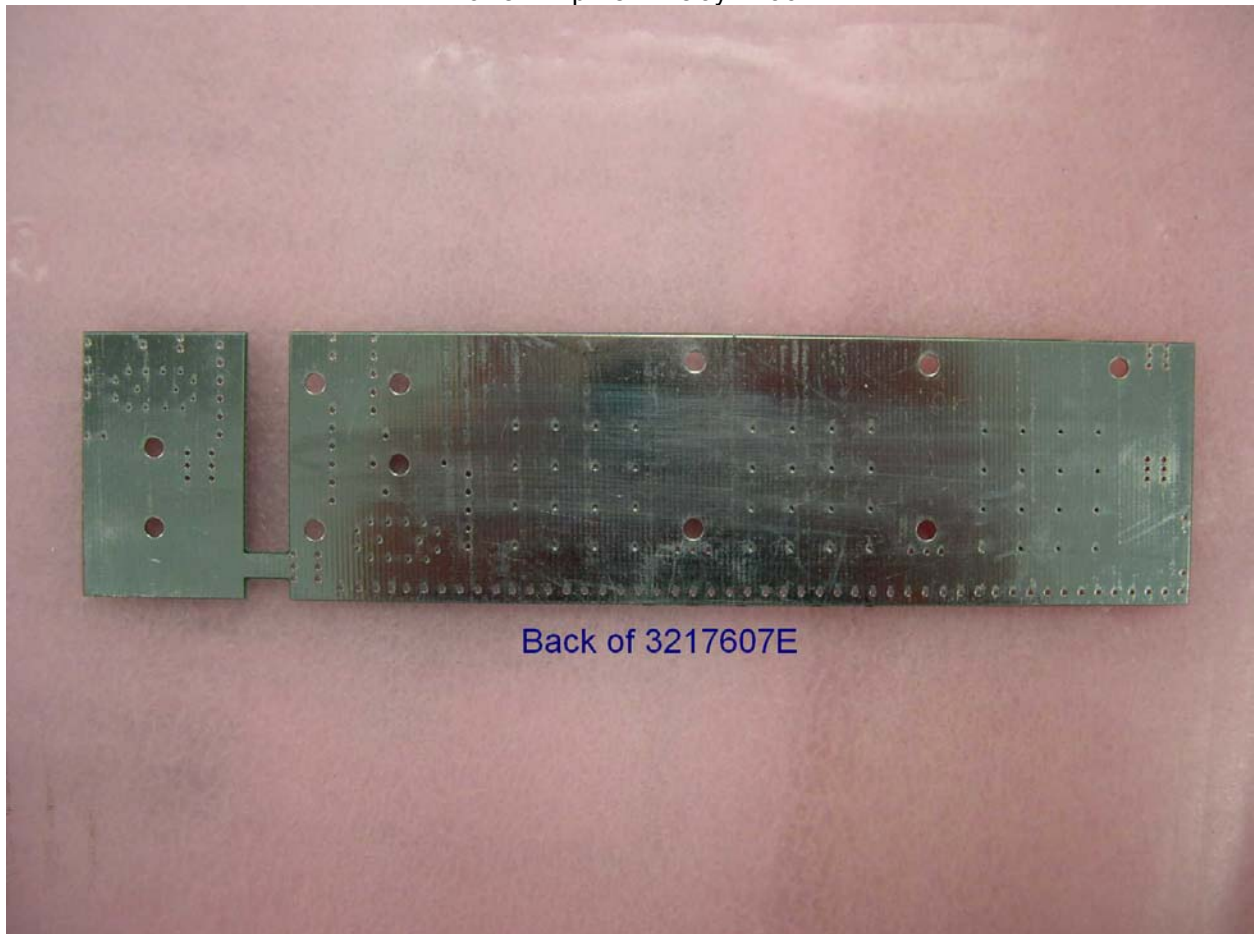
Back of 3217606E

Power Amplifier - Delay - Front



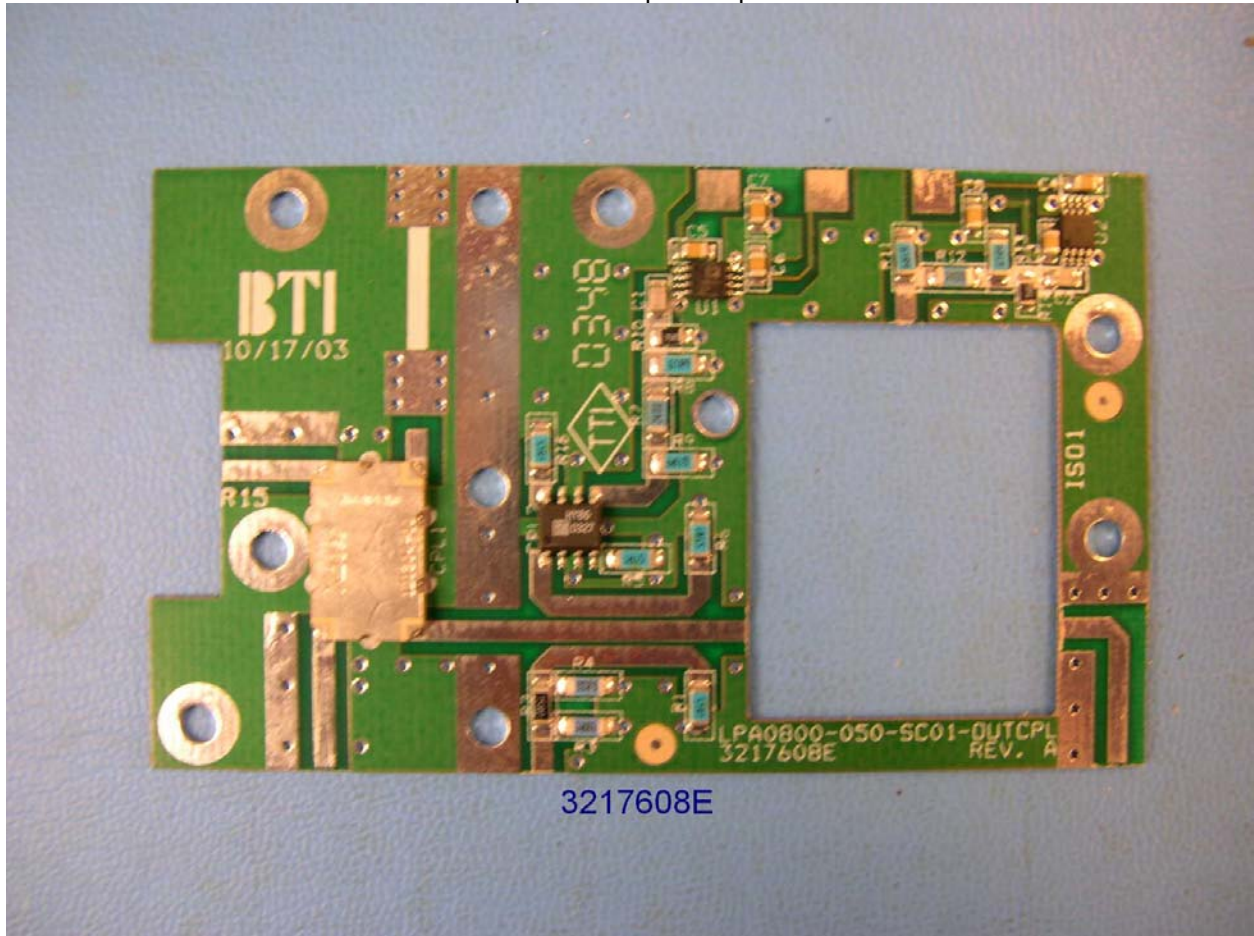
3217607E

Power Amplifier - Delay - Back



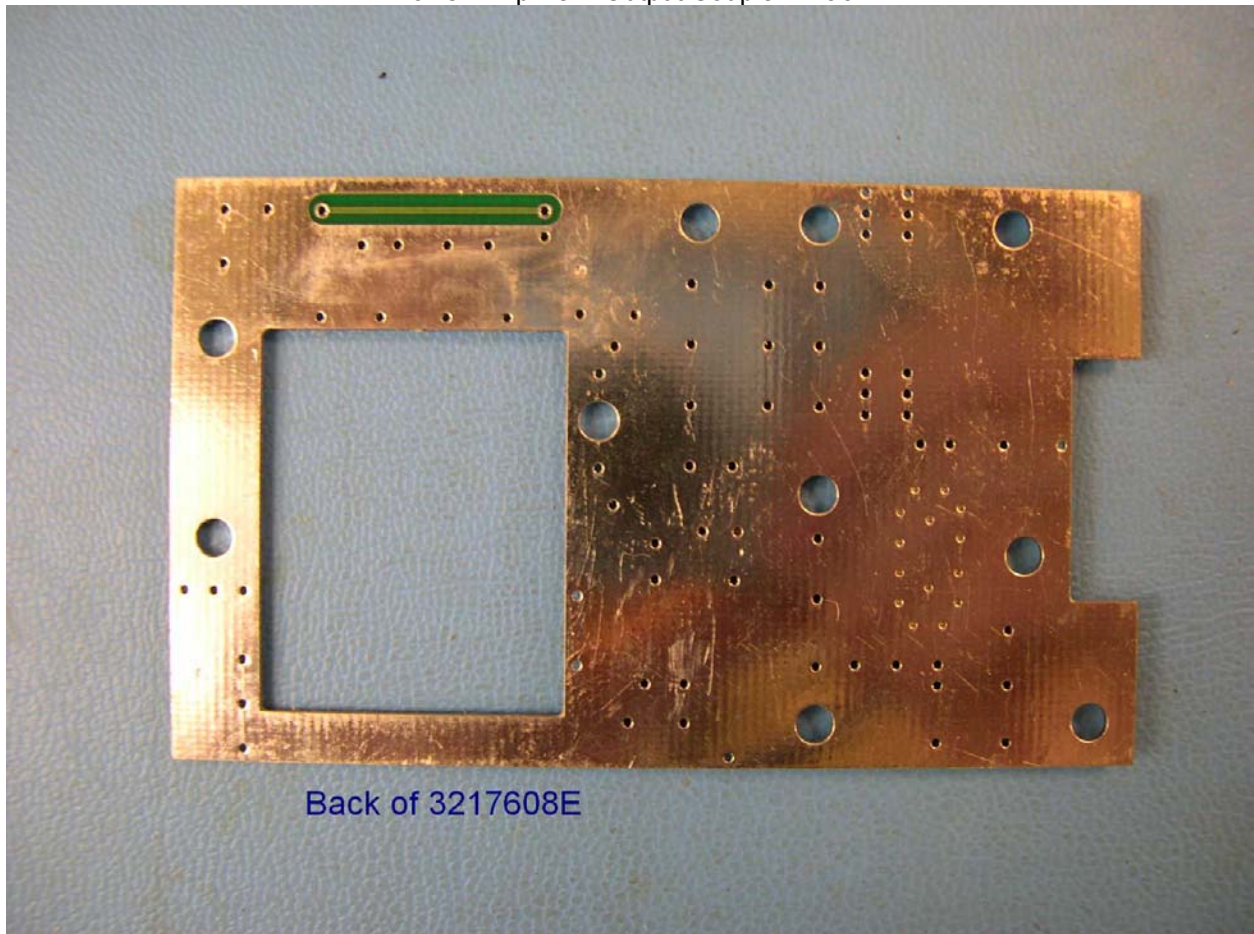
Back of 3217607E

Power Amplifier - Output Coupler - Front



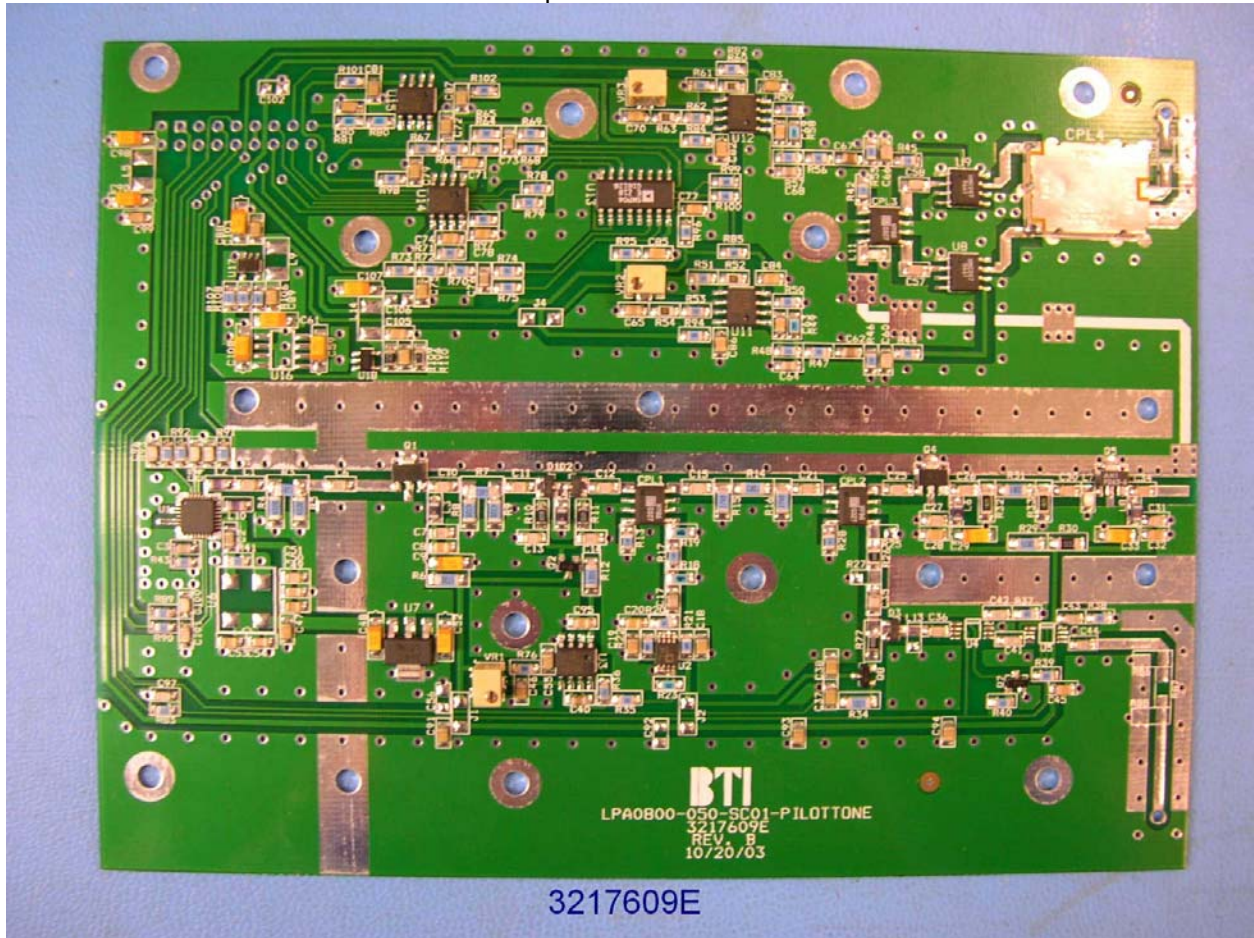
3217608E

Power Amplifier - Output Coupler - Back

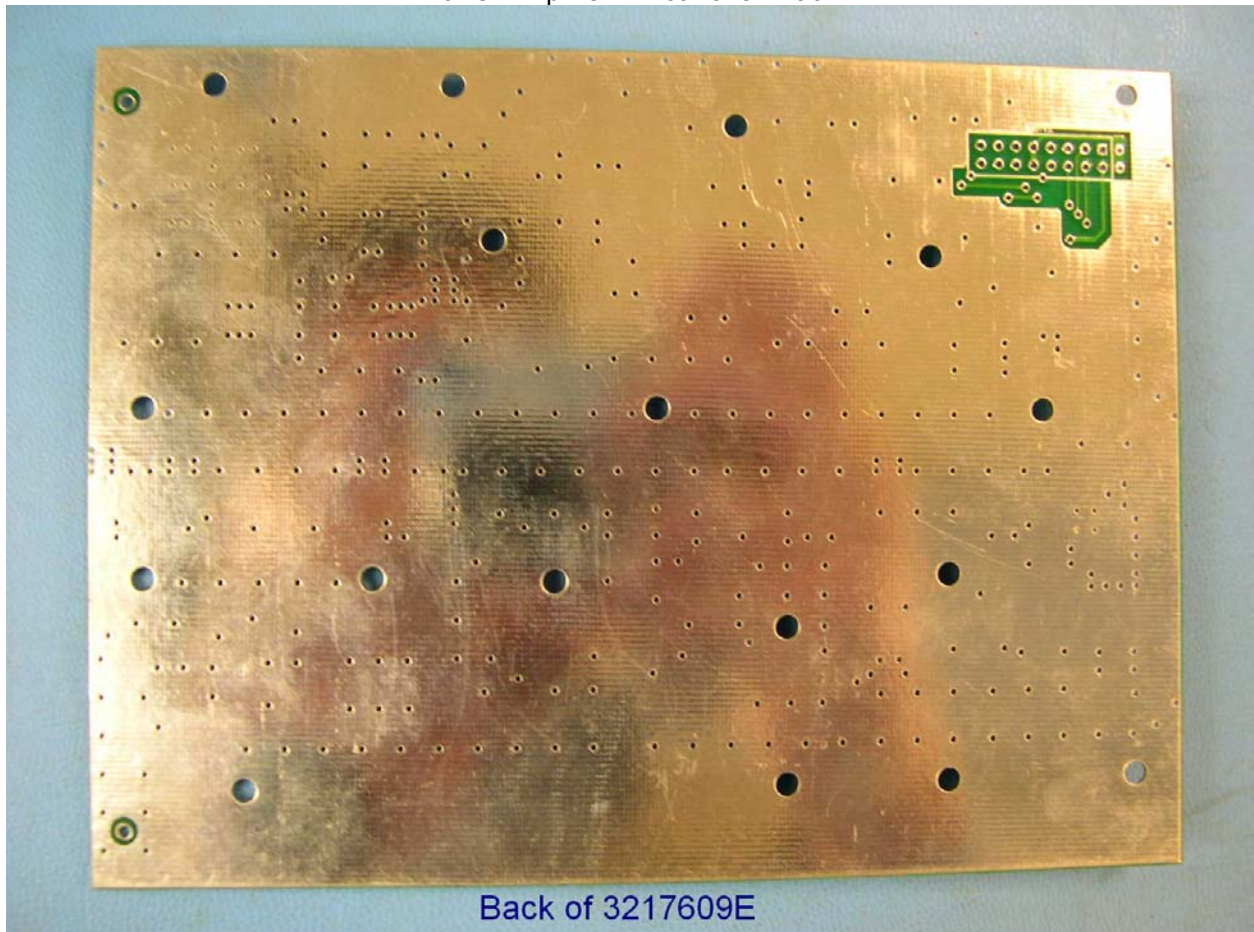


Back of 3217608E

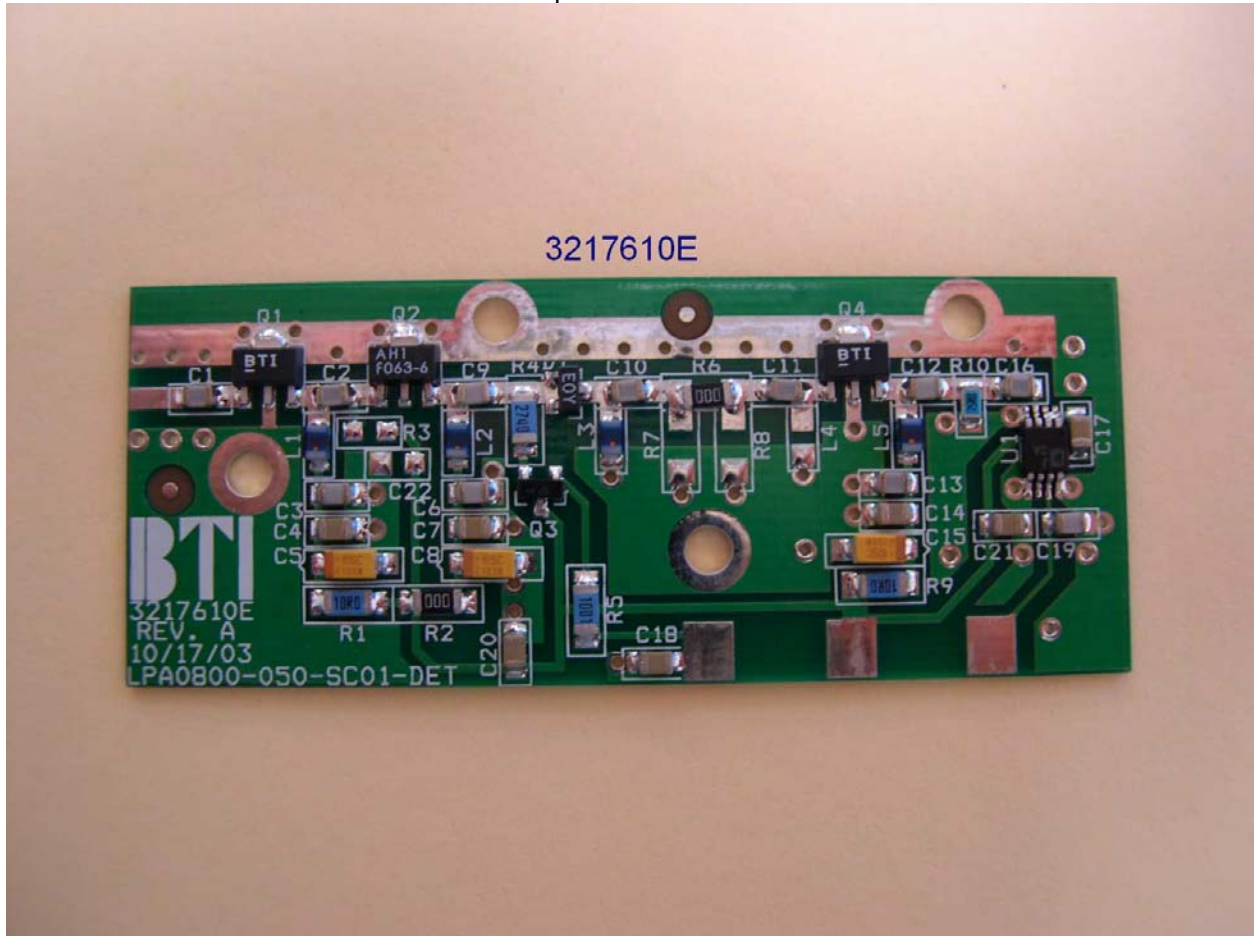
Power Amplifier - Pilot Tone - Front



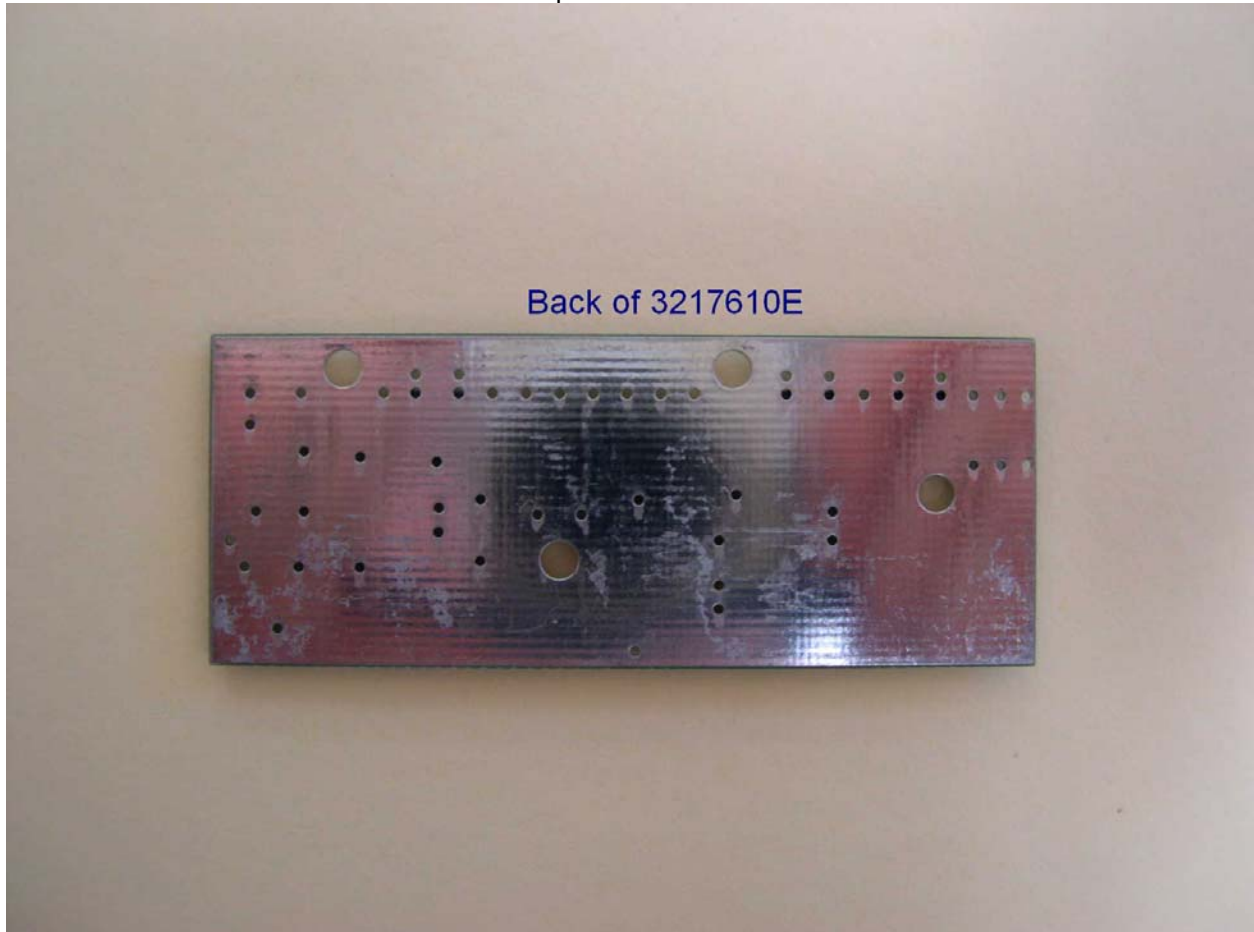
Power Amplifier - Pilot Tone - Back



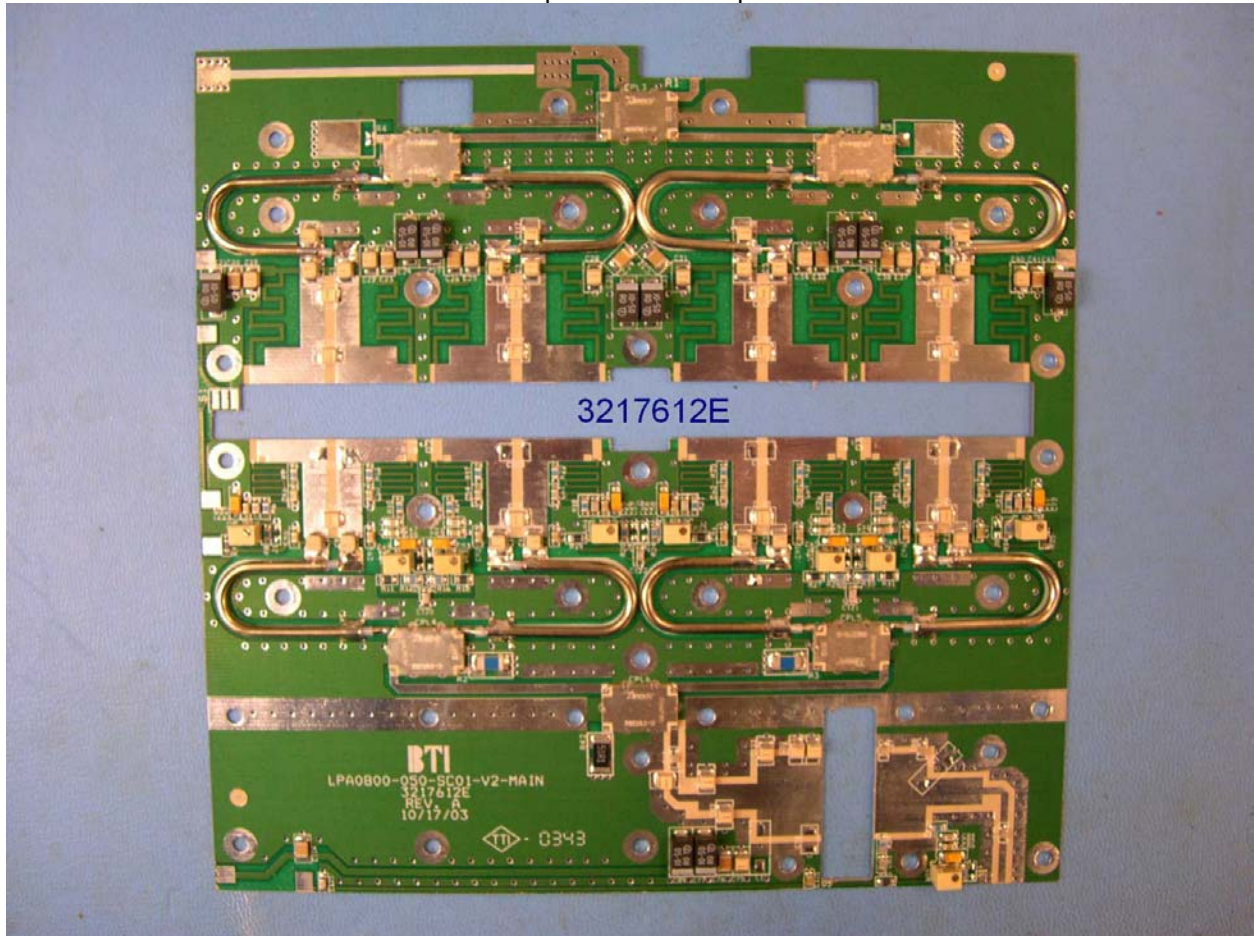
Power Amplifier - Detector - Front



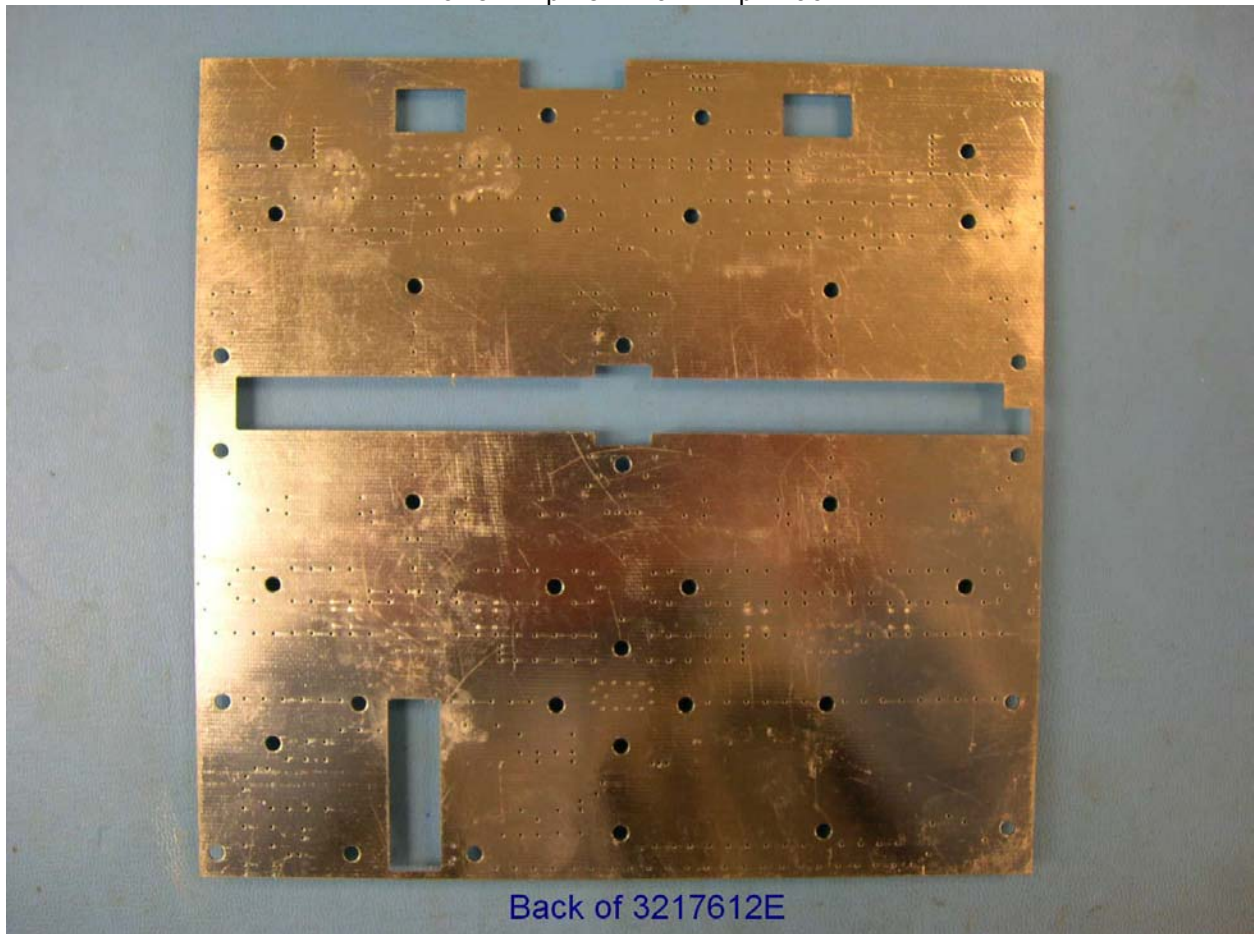
Power Amplifier - Detector - Back



Power Amplifier - Main Amp - Front

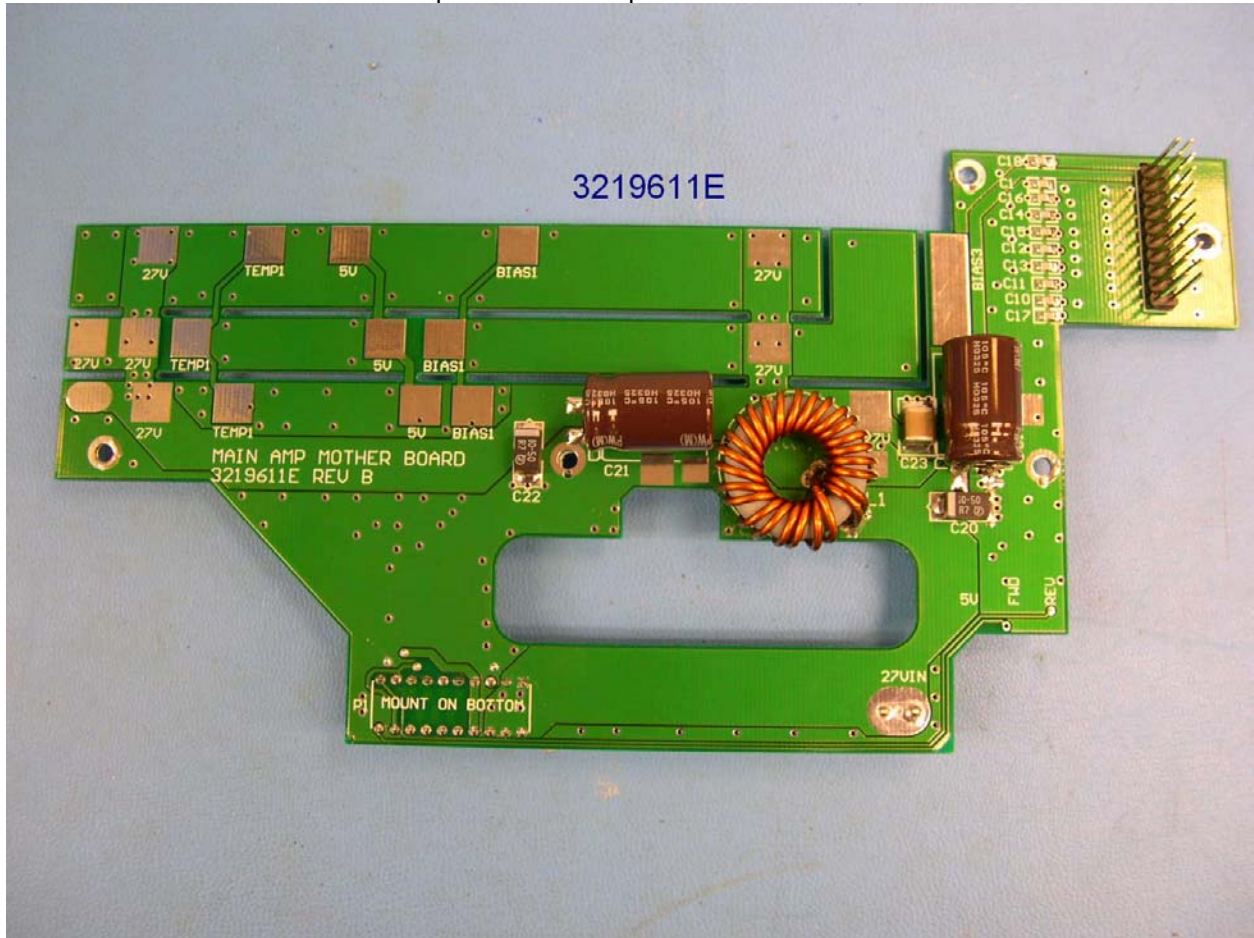


Power Amplifier - Main Amp - Back

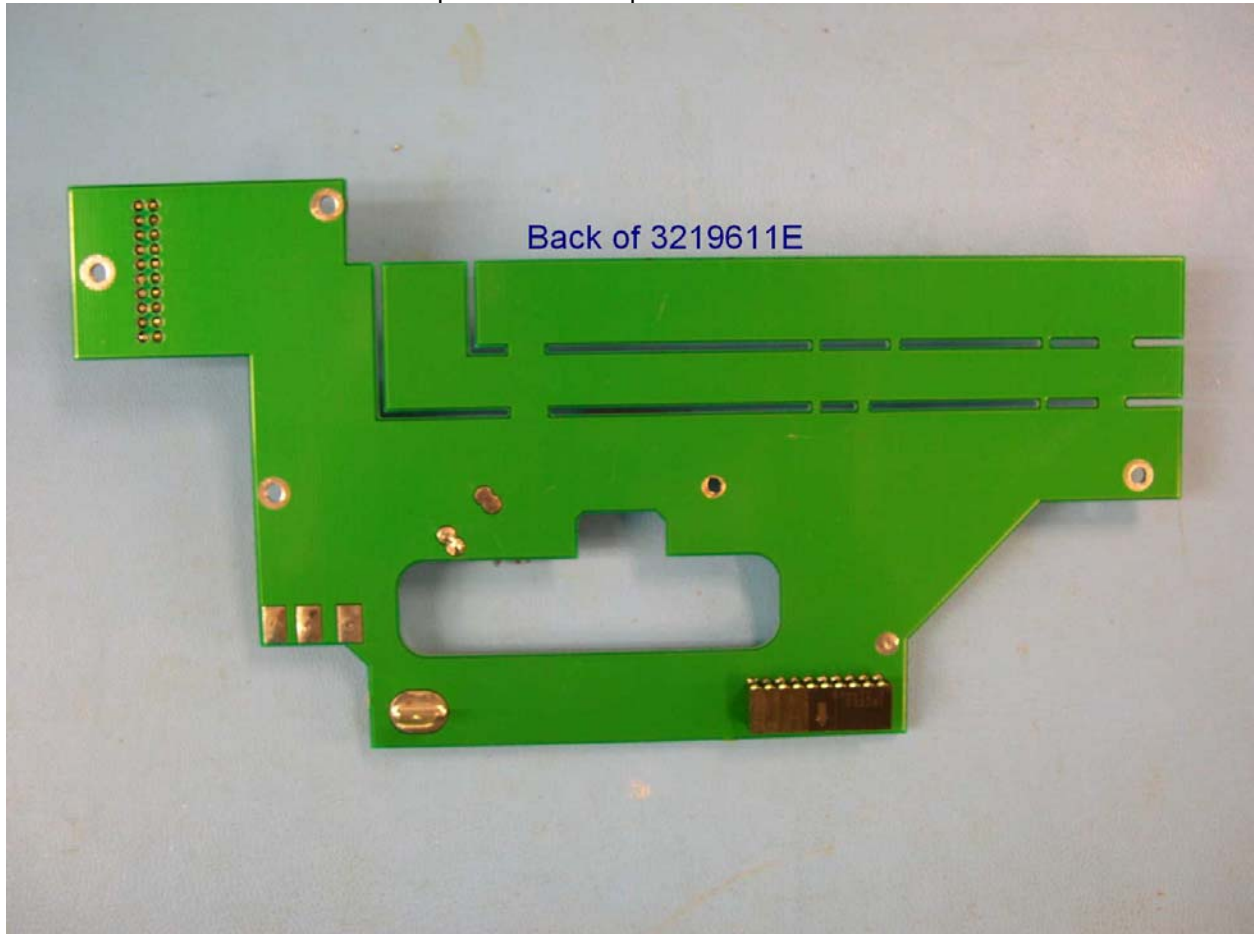


Back of 3217612E

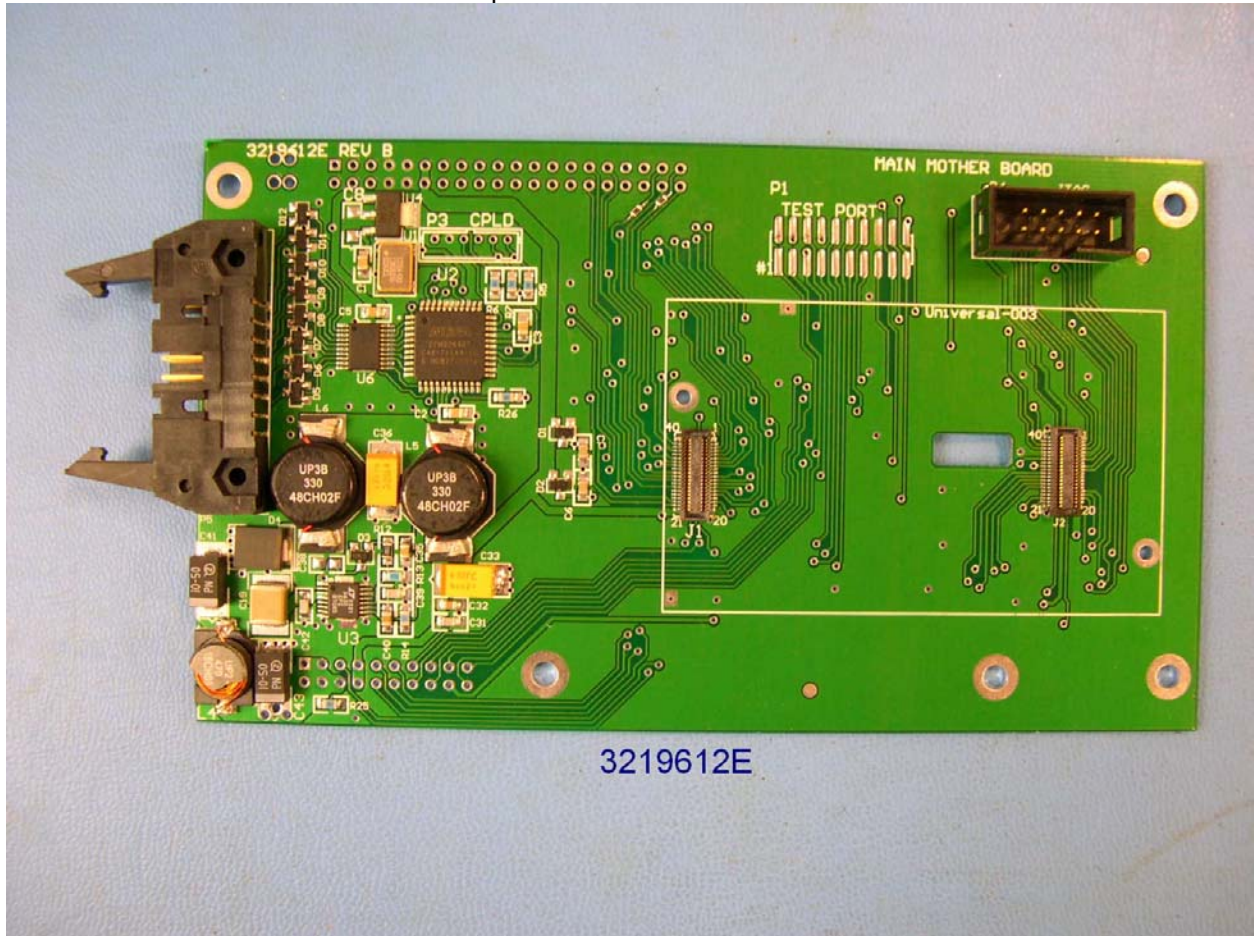
Power Amplifier - Main Amplifier Mother Board - Front



Power Amplifier - Main Amplifier Mother Board - Back

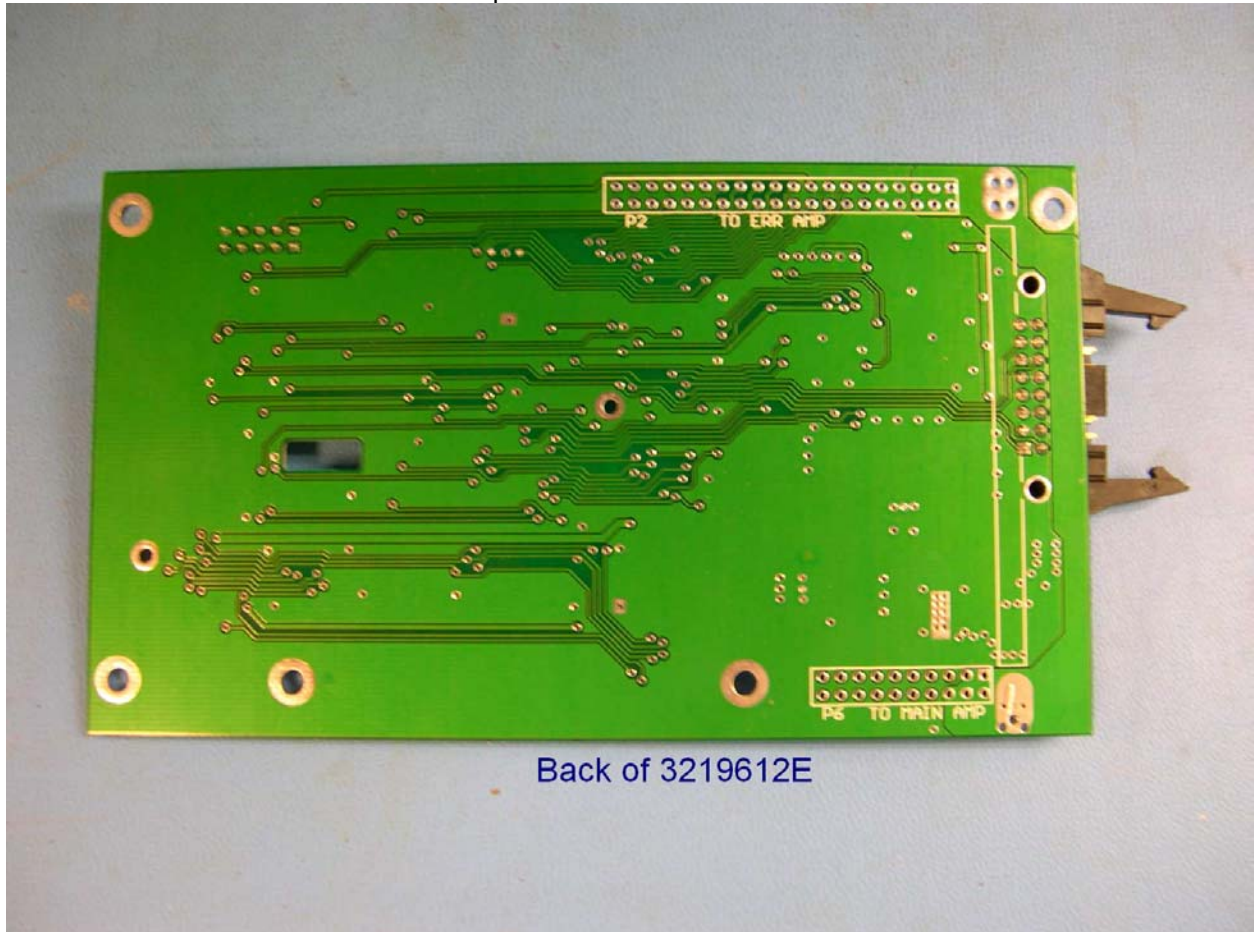


Power Amplifier - Main Mother Board - Front



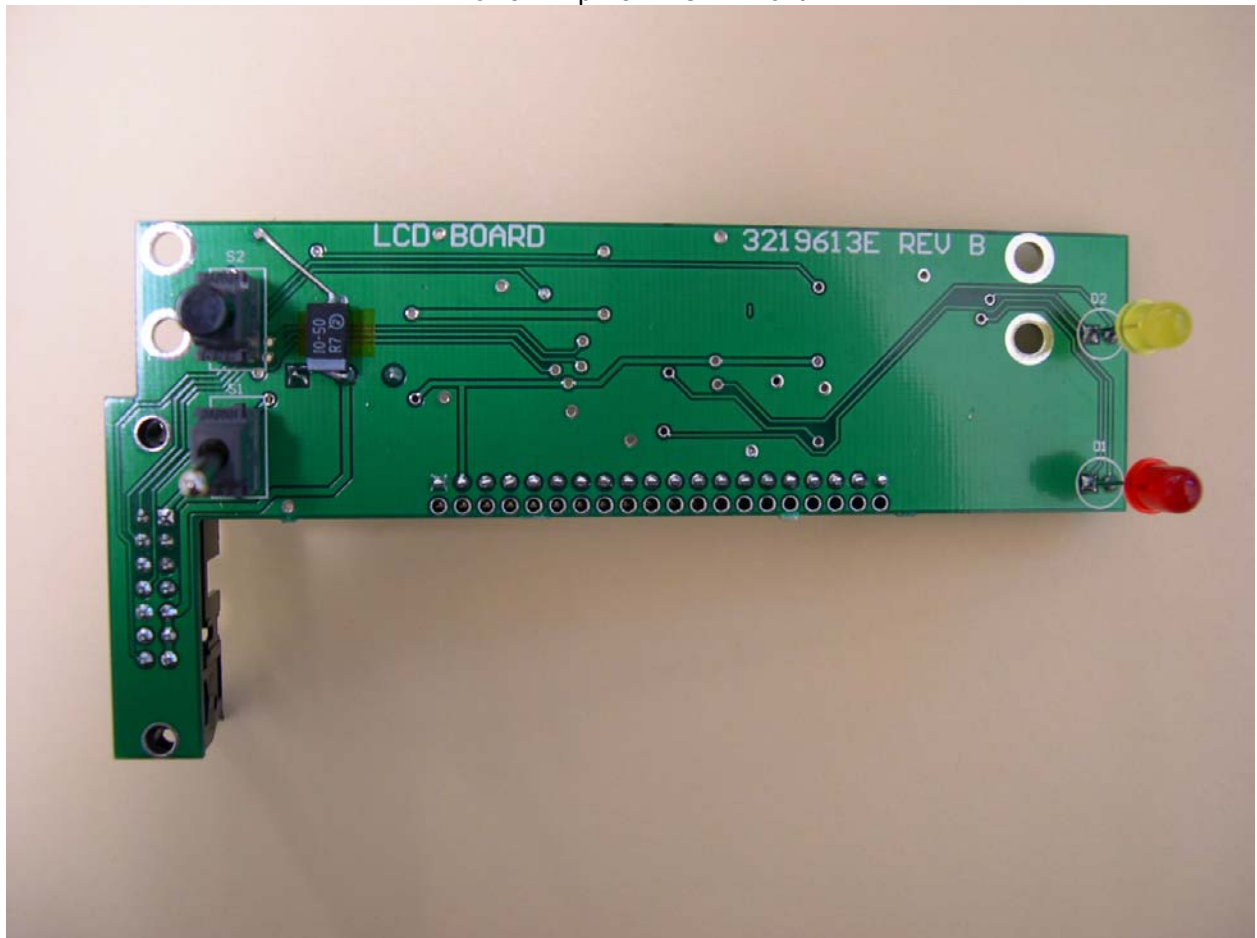
3219612E

Power Amplifier - Main Mother Board - Back

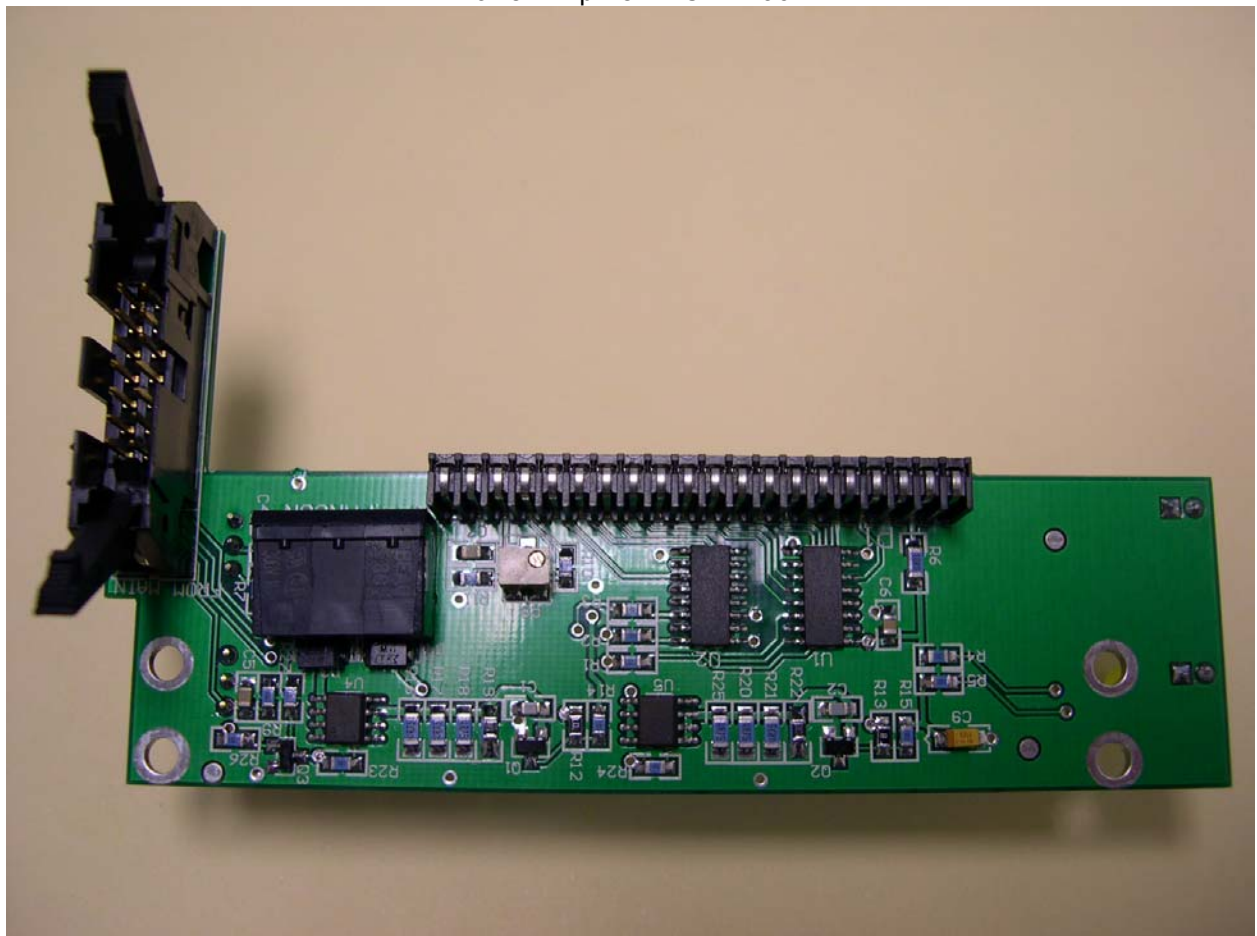


Back of 3219612E

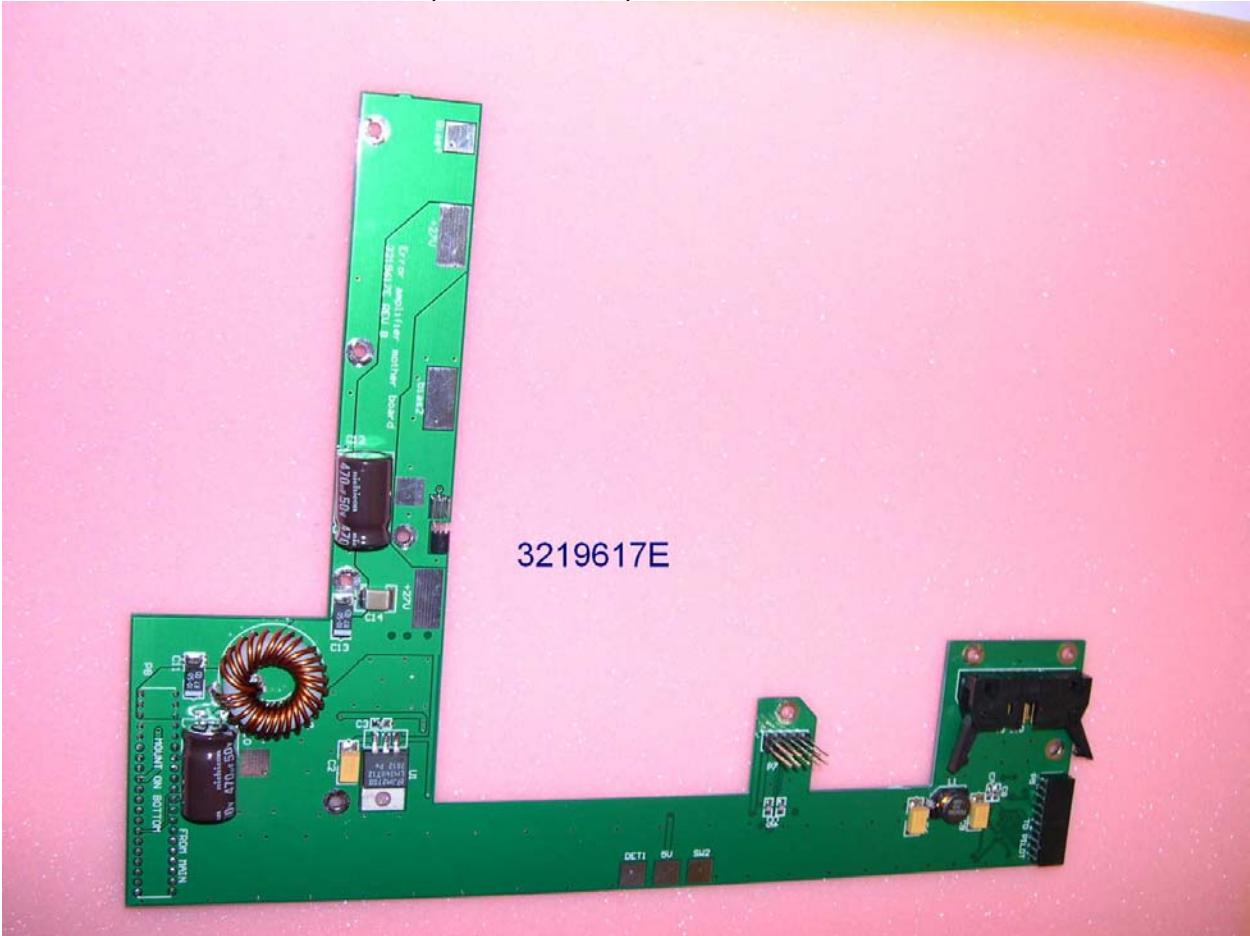
Power Amplifier - LCD - Front



Power Amplifier - LCD - Back

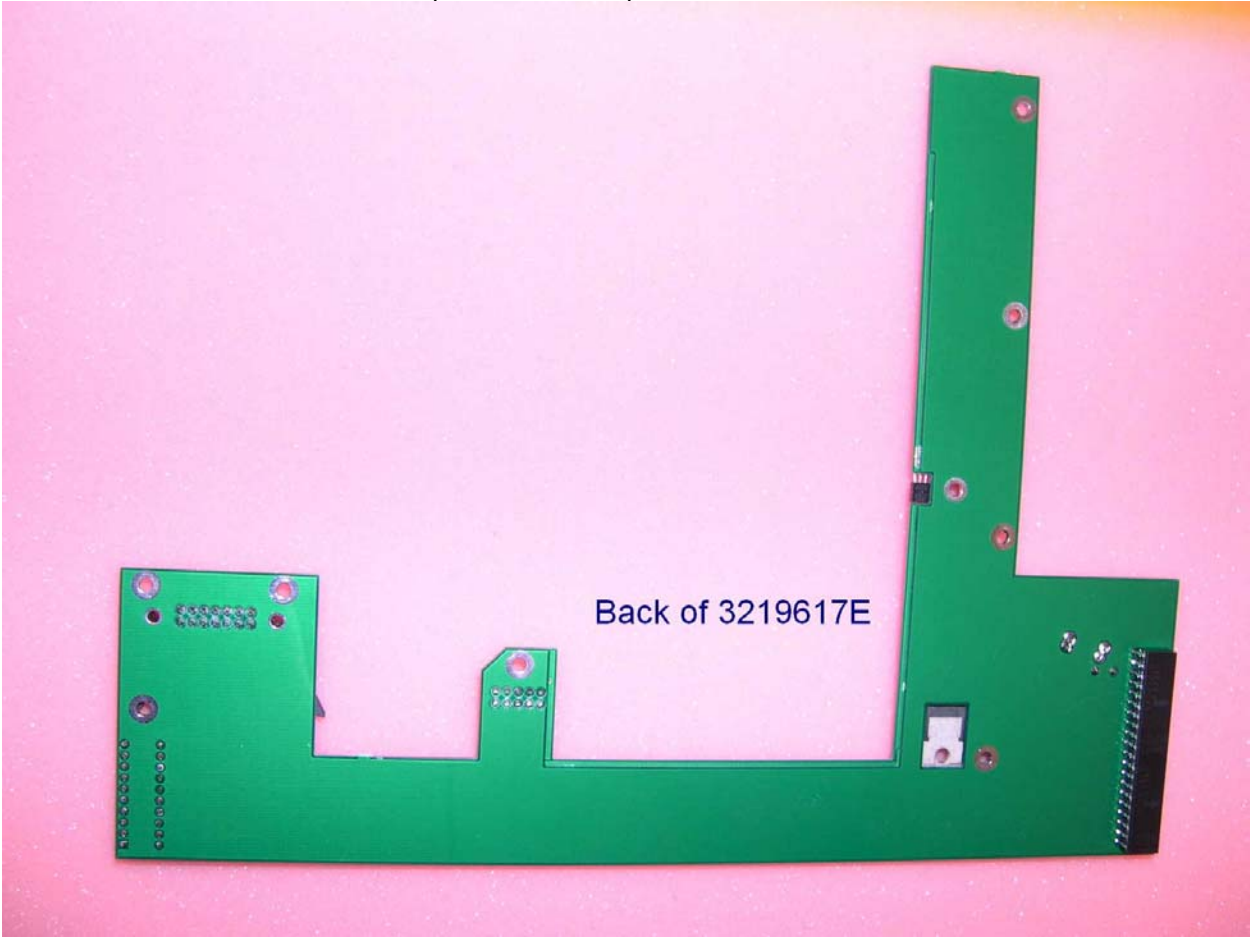


Power Amplifier - Error Amplifier Mother Board - Front



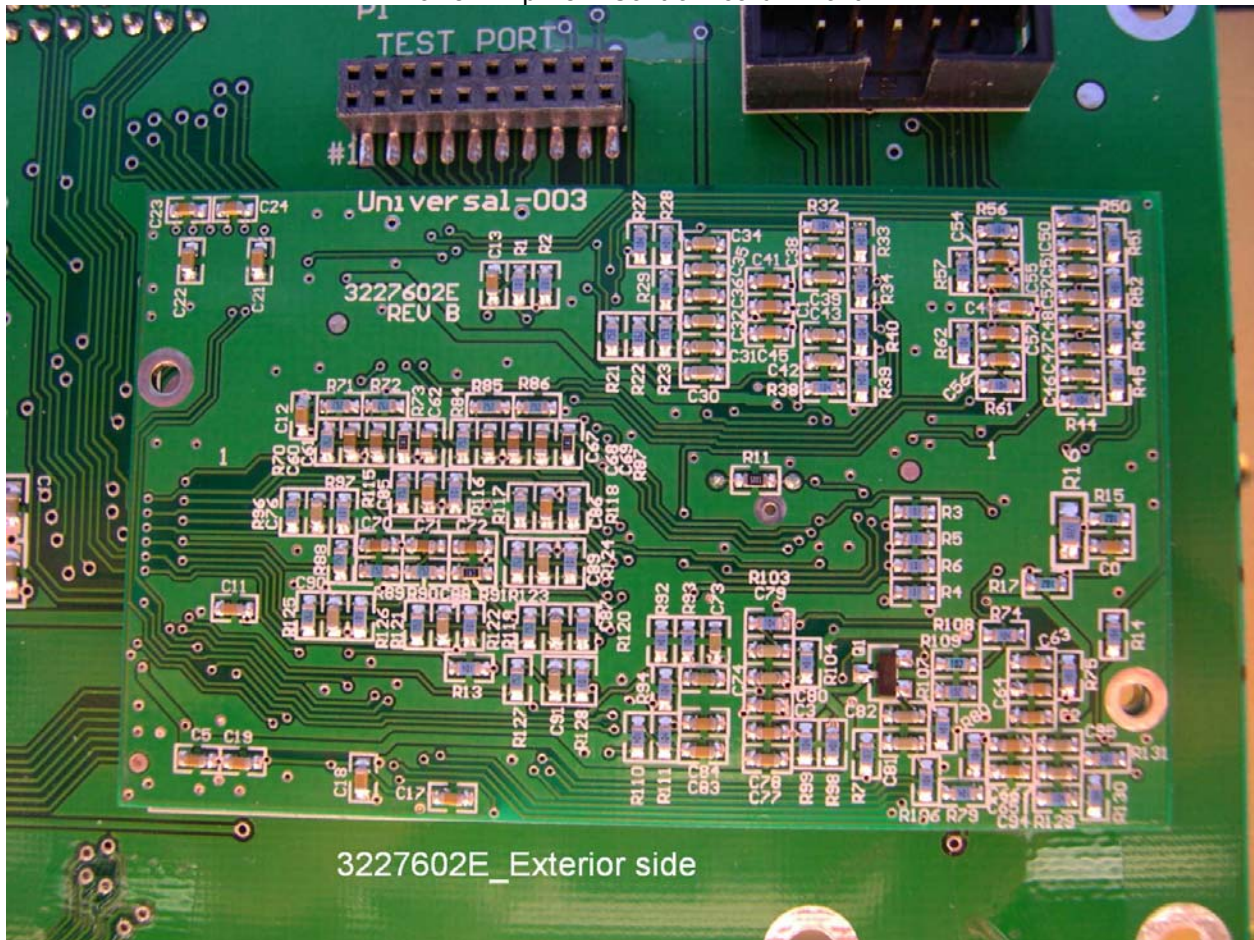
3219617E

Power Amplifier - Error Amplifier Mother Board - Back



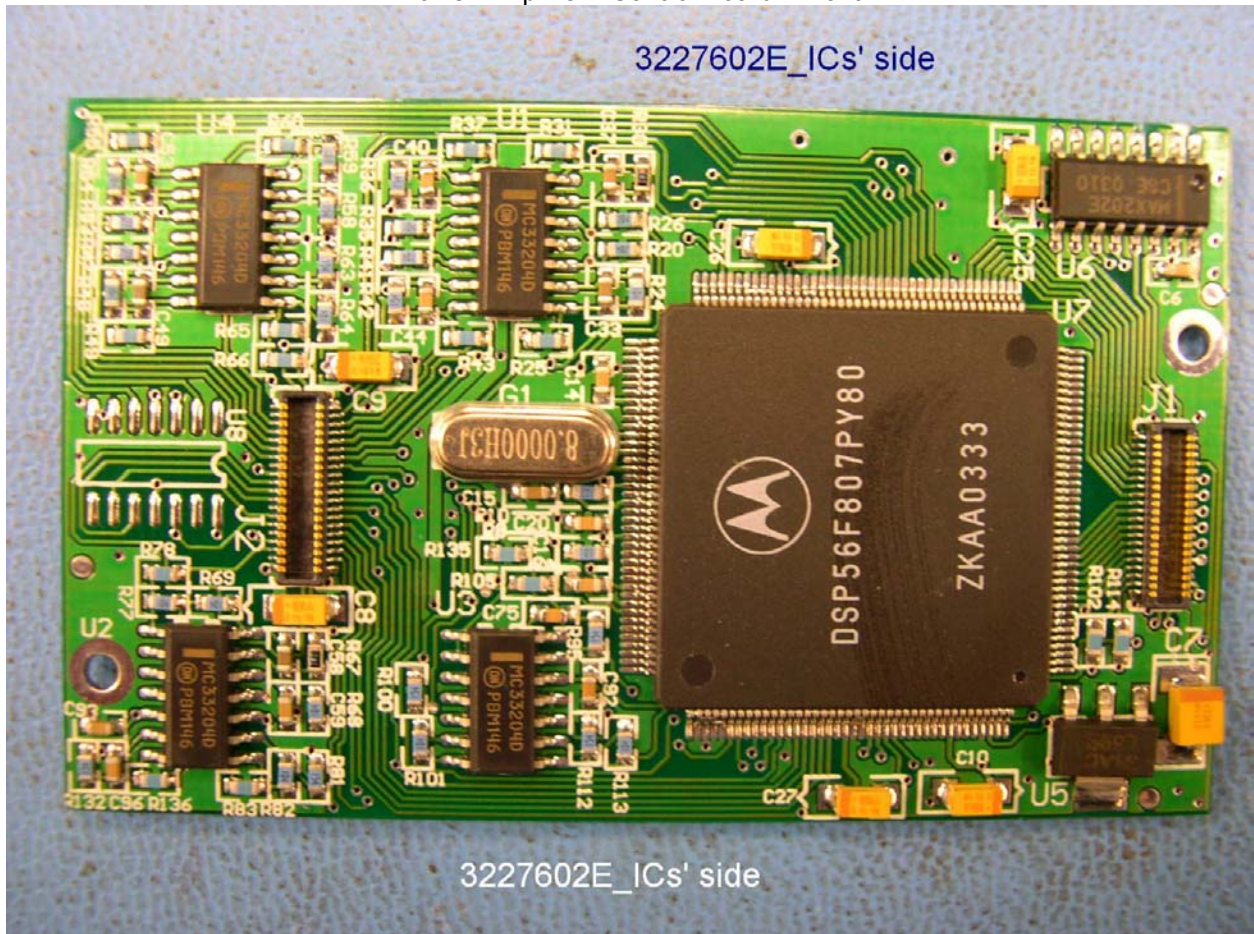
Back of 3219617E

Power Amplifier - Control Board - Front



3227602E_Exterior side

Power Amplifier - Control Board - Front



3227602E_ICs' side

3227602E_ICs' side