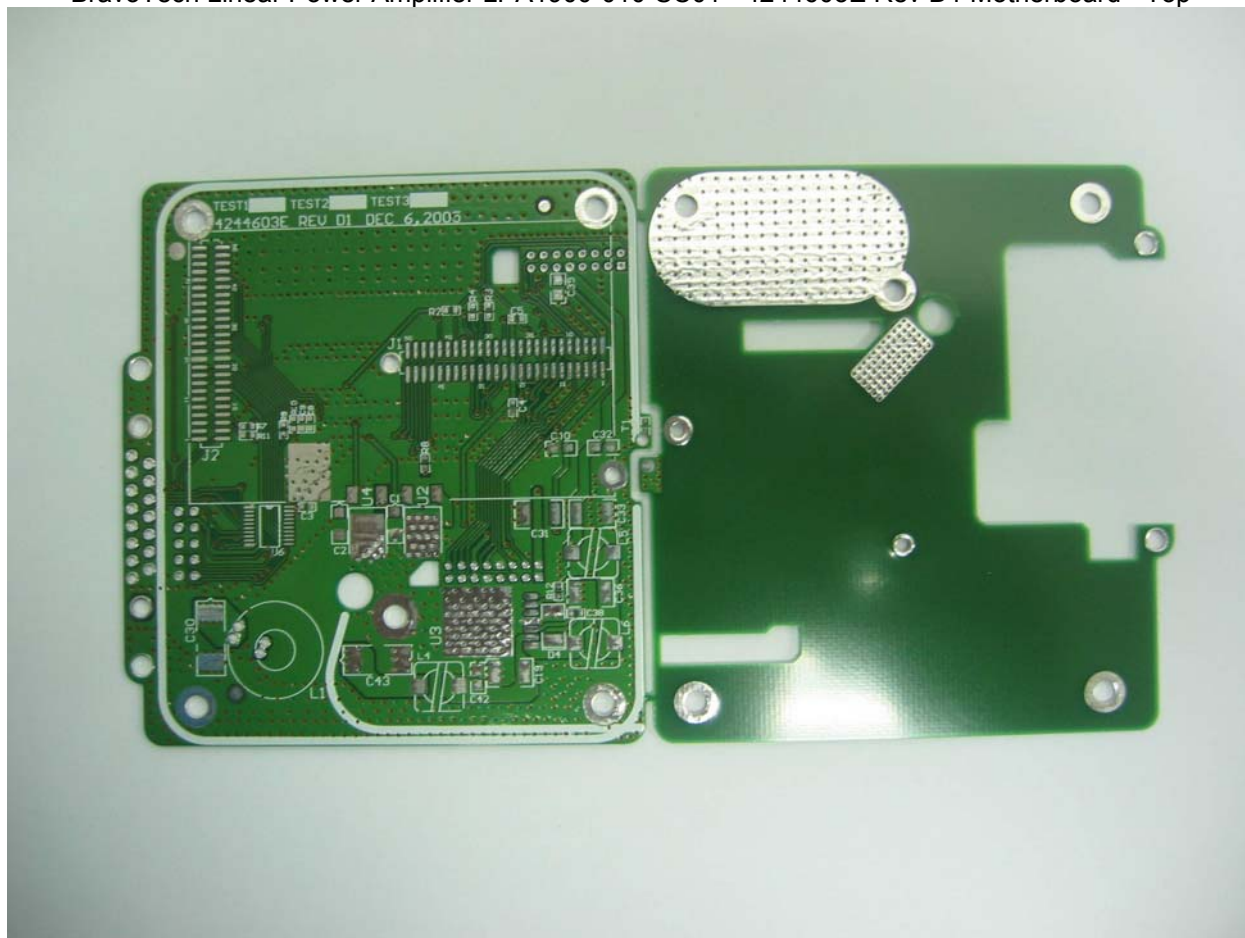
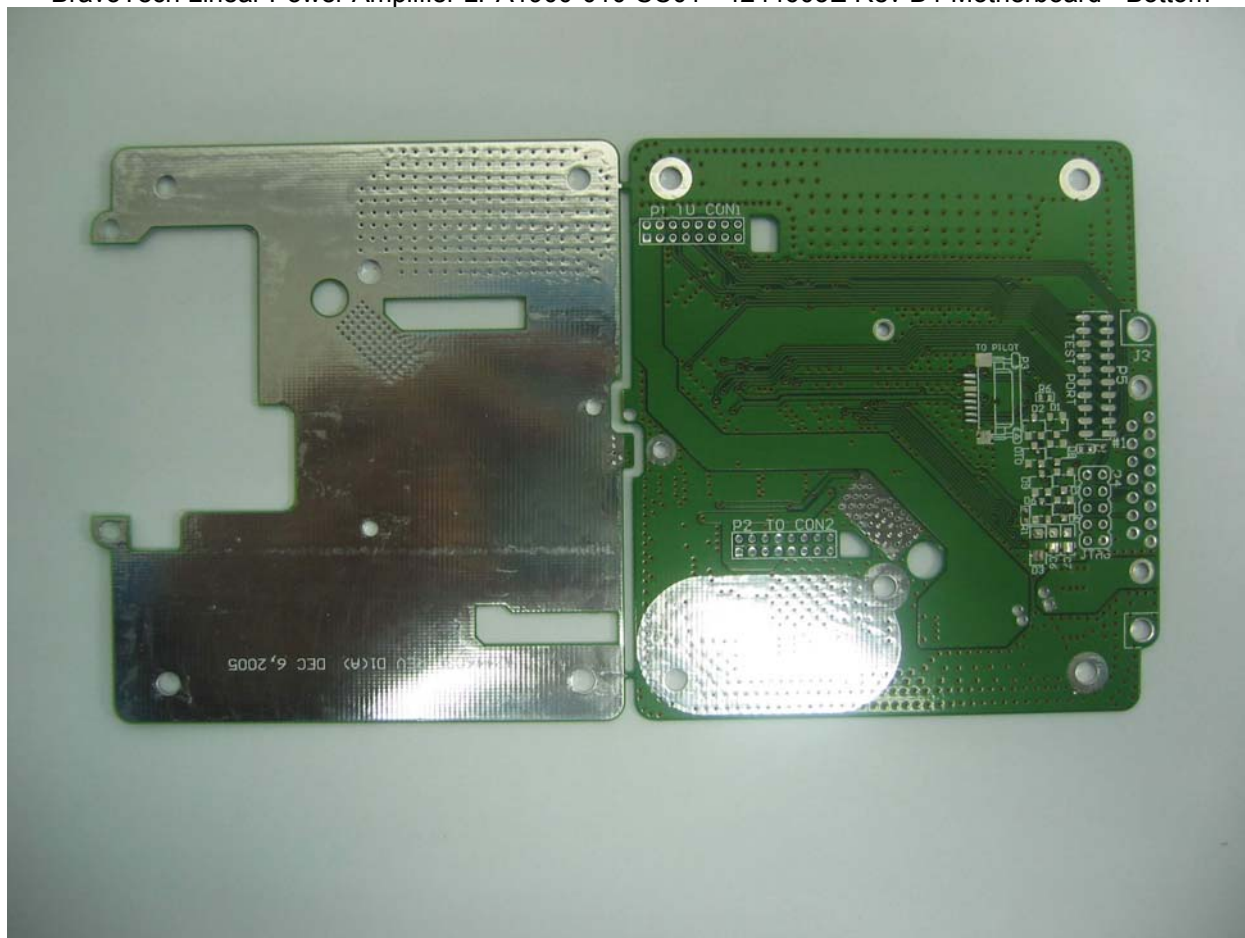


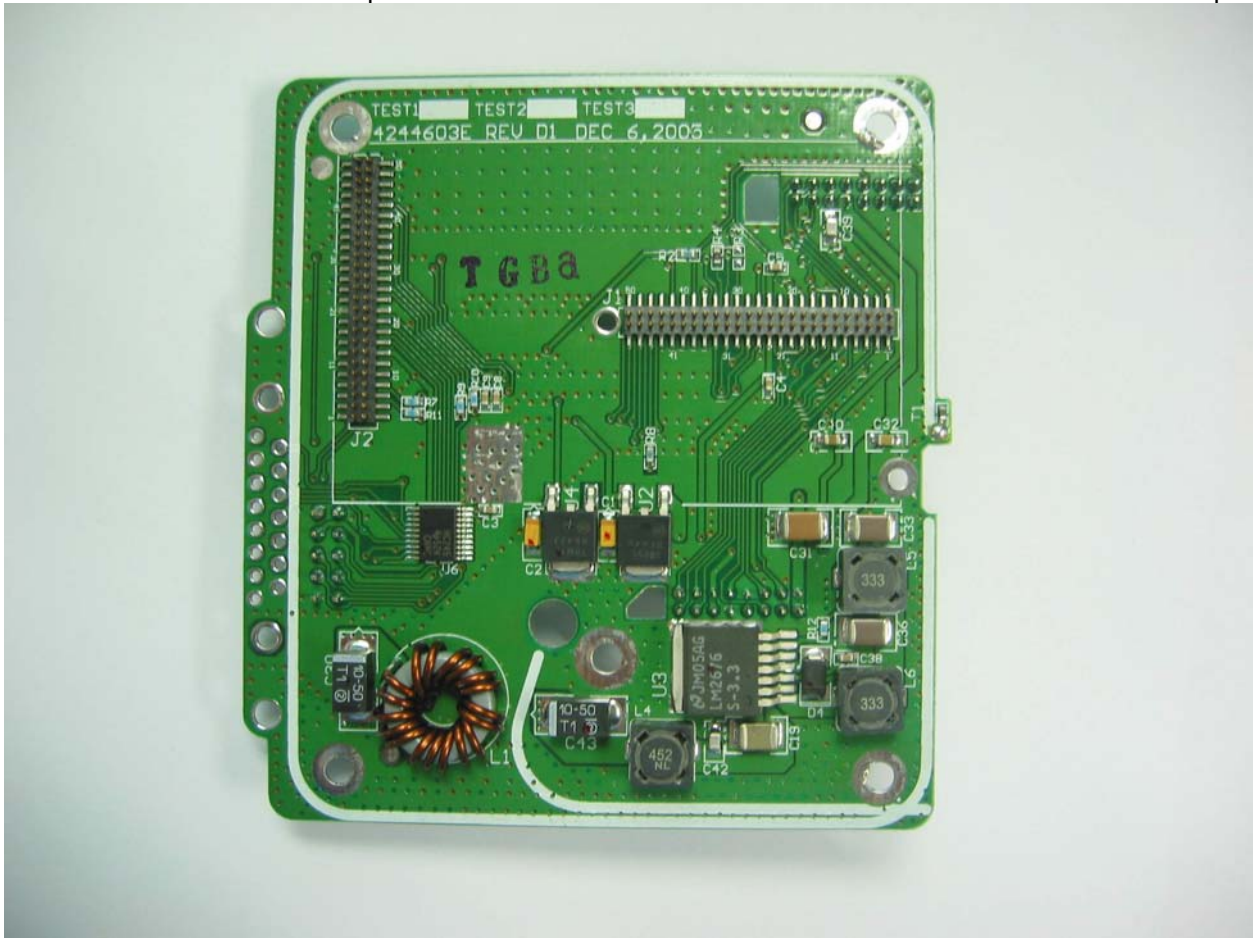
BravoTech Linear Power Amplifier LPA1900-010-SC01 - 4244603E Rev D1 Motherboard - Top



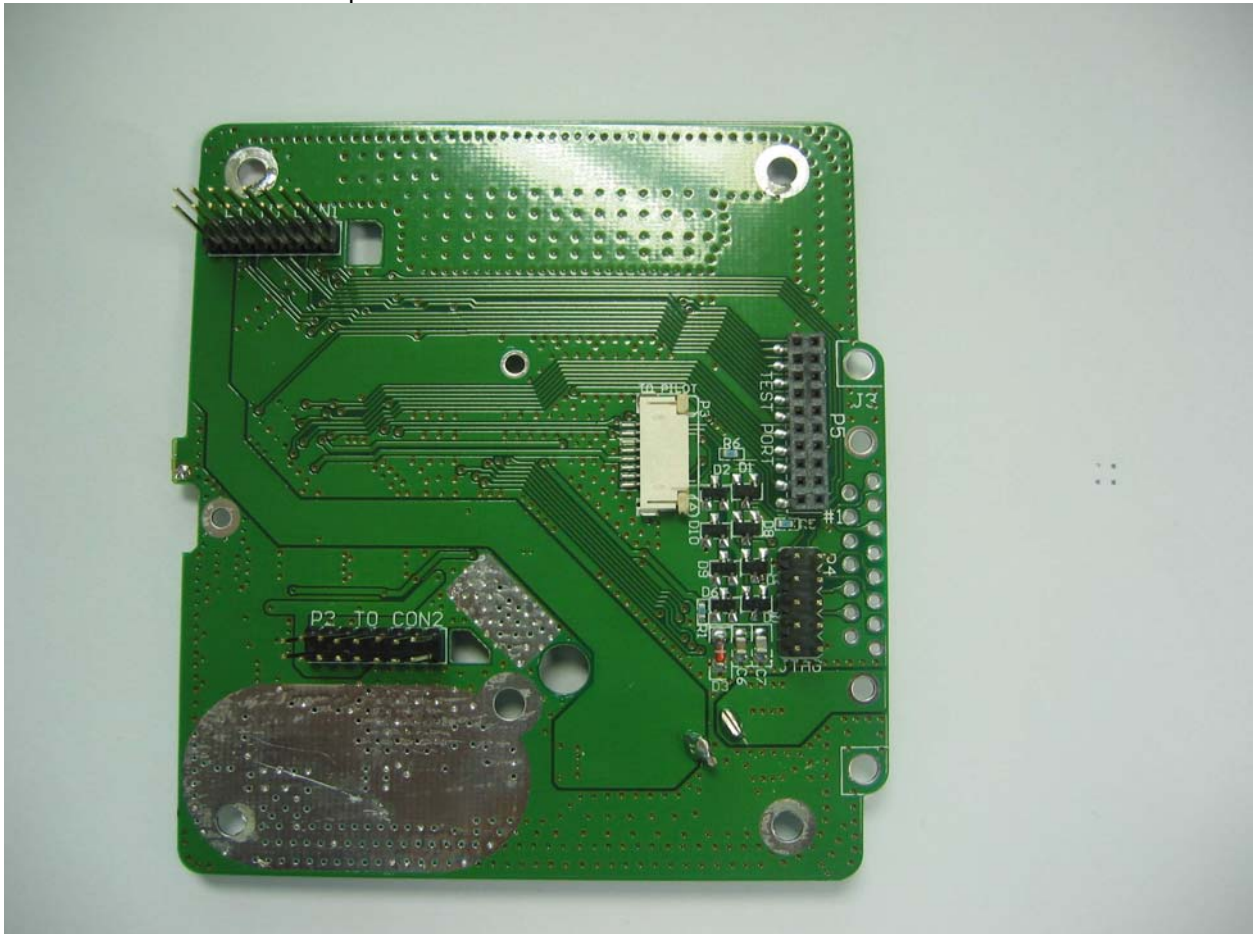
BravoTech Linear Power Amplifier LPA1900-010-SC01 - 4244603E Rev D1 Motherboard - Bottom



BravoTech Linear Power Amplifier LPA1900-010-SC01 - 4244603E Rev D1 Motherboard - Part A Top



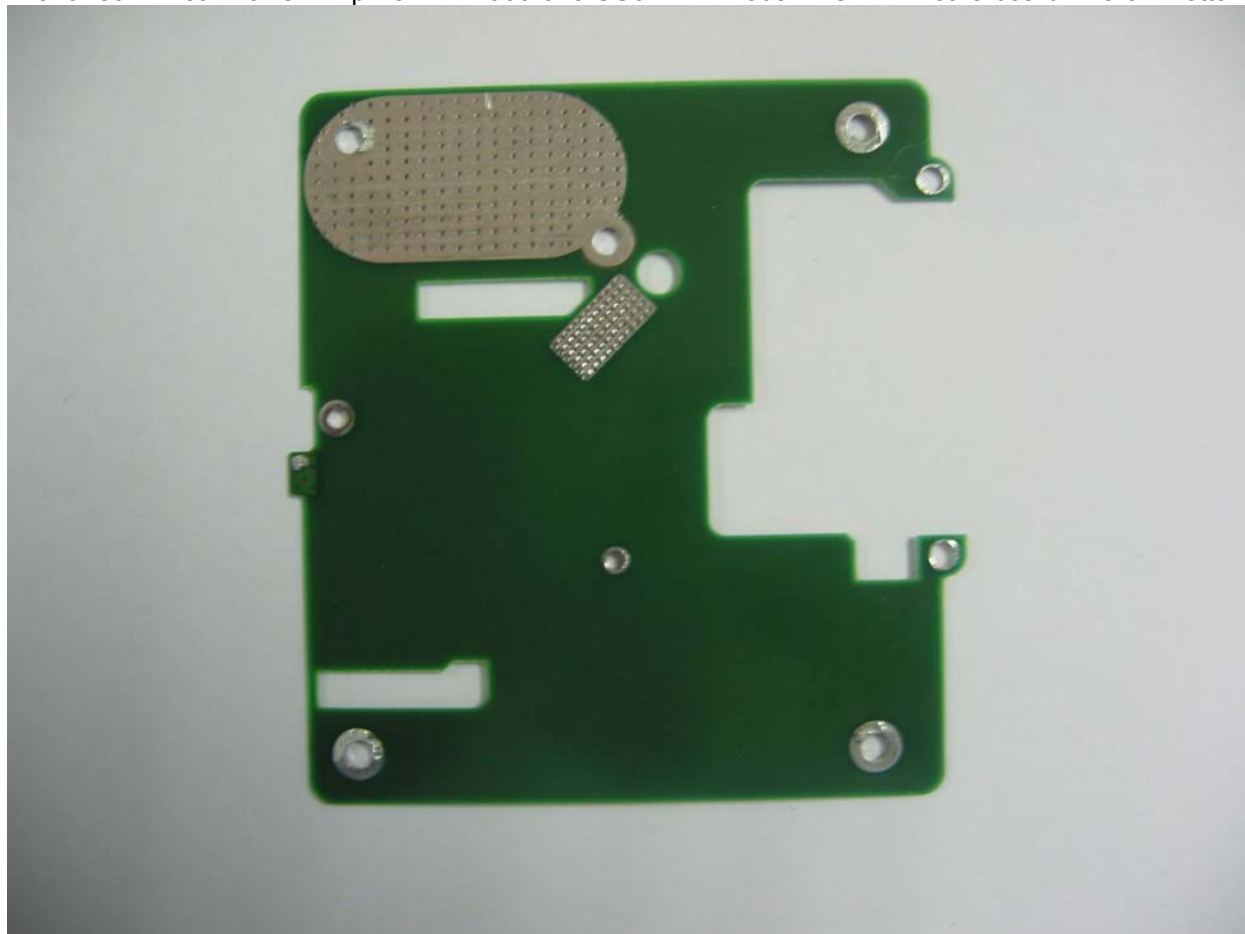
BravoTech Linear Power Amplifier LPA1900-010-SC01 - 4244603E Rev D1 Motherboard - Part A Bottom



BravoTech Linear Power Amplifier LPA1900-010-SC01 - 4244603E Rev D1 Motherboard - Part B Top



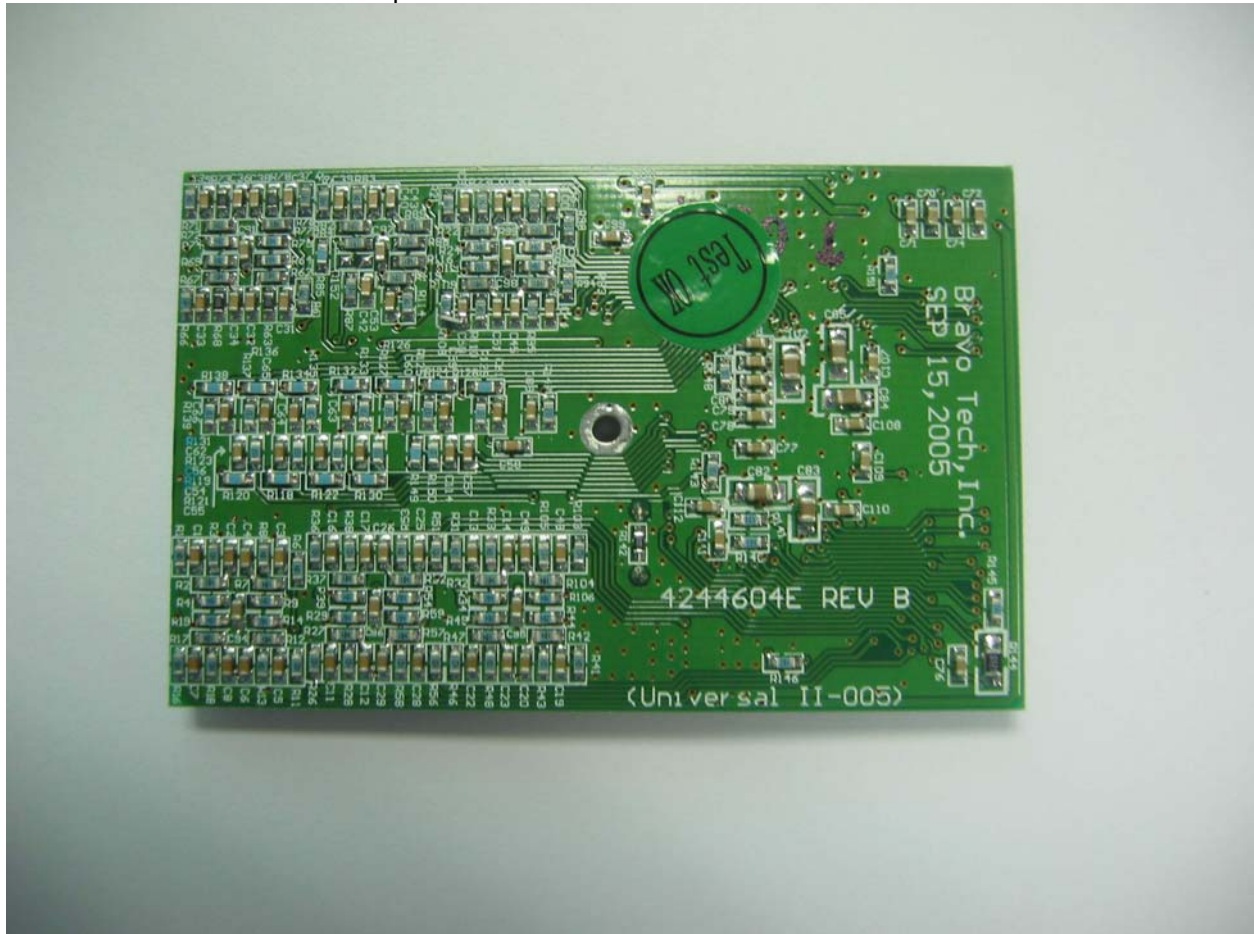
BravoTech Linear Power Amplifier LPA1900-010-SC01 - 4244603E Rev D1 Motherboard - Part B Bottom



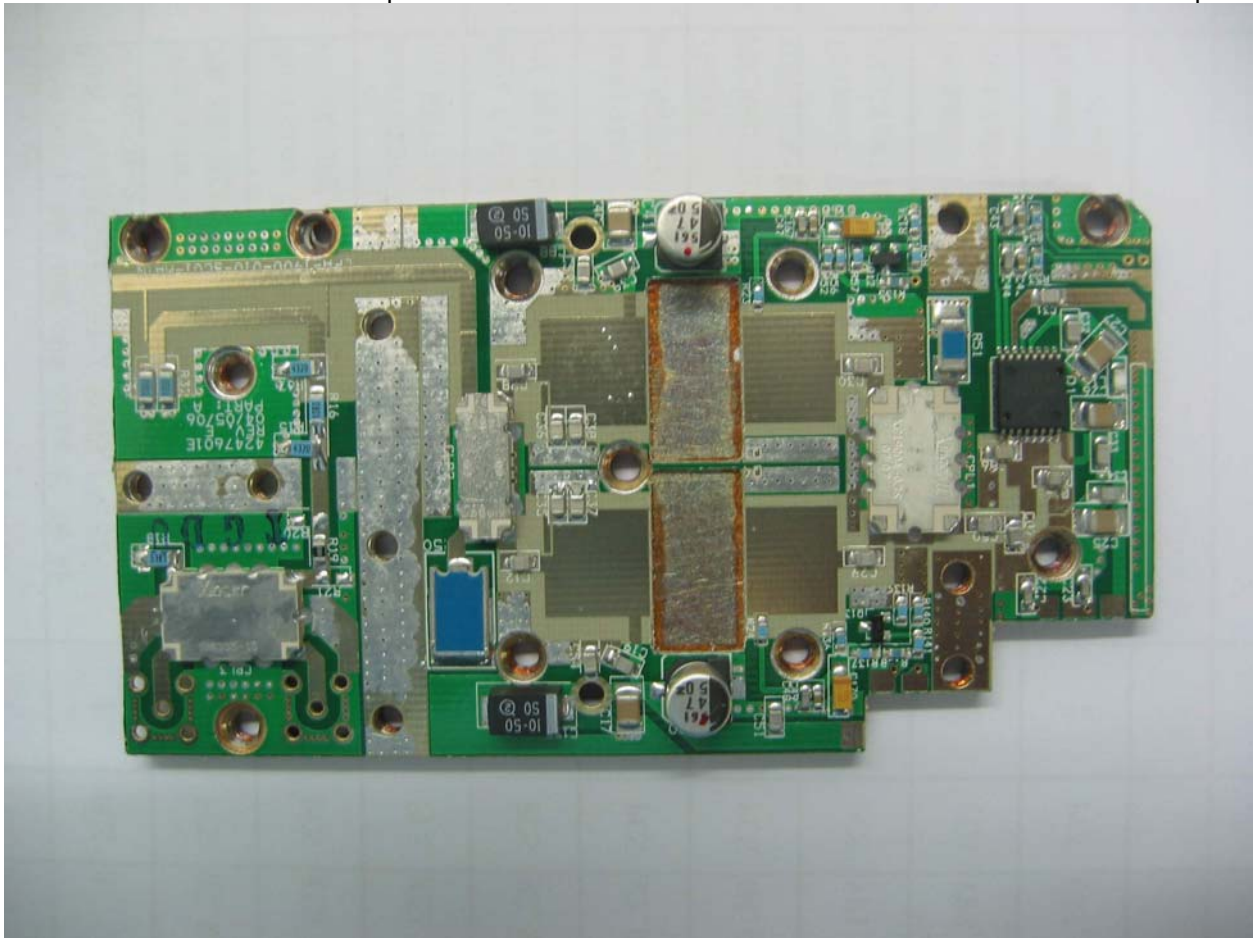
BravoTech Linear Power Amplifier LPA1900-010-SC01 - 4244604E Rev B Control Board - Top



BravoTech Linear Power Amplifier LPA1900-010-SC01 - 4244604E Rev B Control Board - Bottom



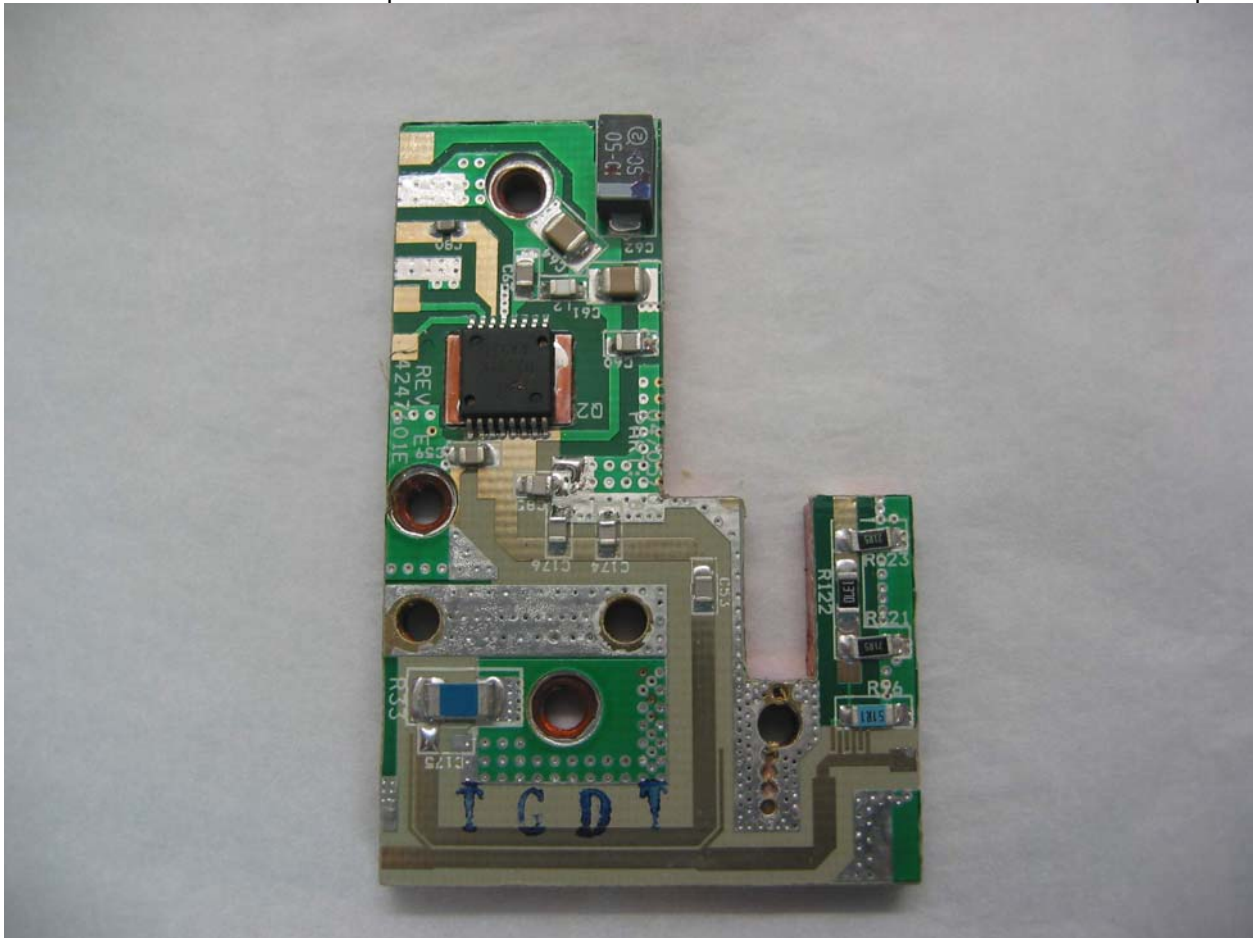
BravoTech Linear Power Amplifier LPA1900-010-SC01 - 4247601ERev E Main Board - Part A Top



BravoTech Linear Power Amplifier LPA1900-010-SC01 - 4247601ERev E Main Board - Part A Bottom



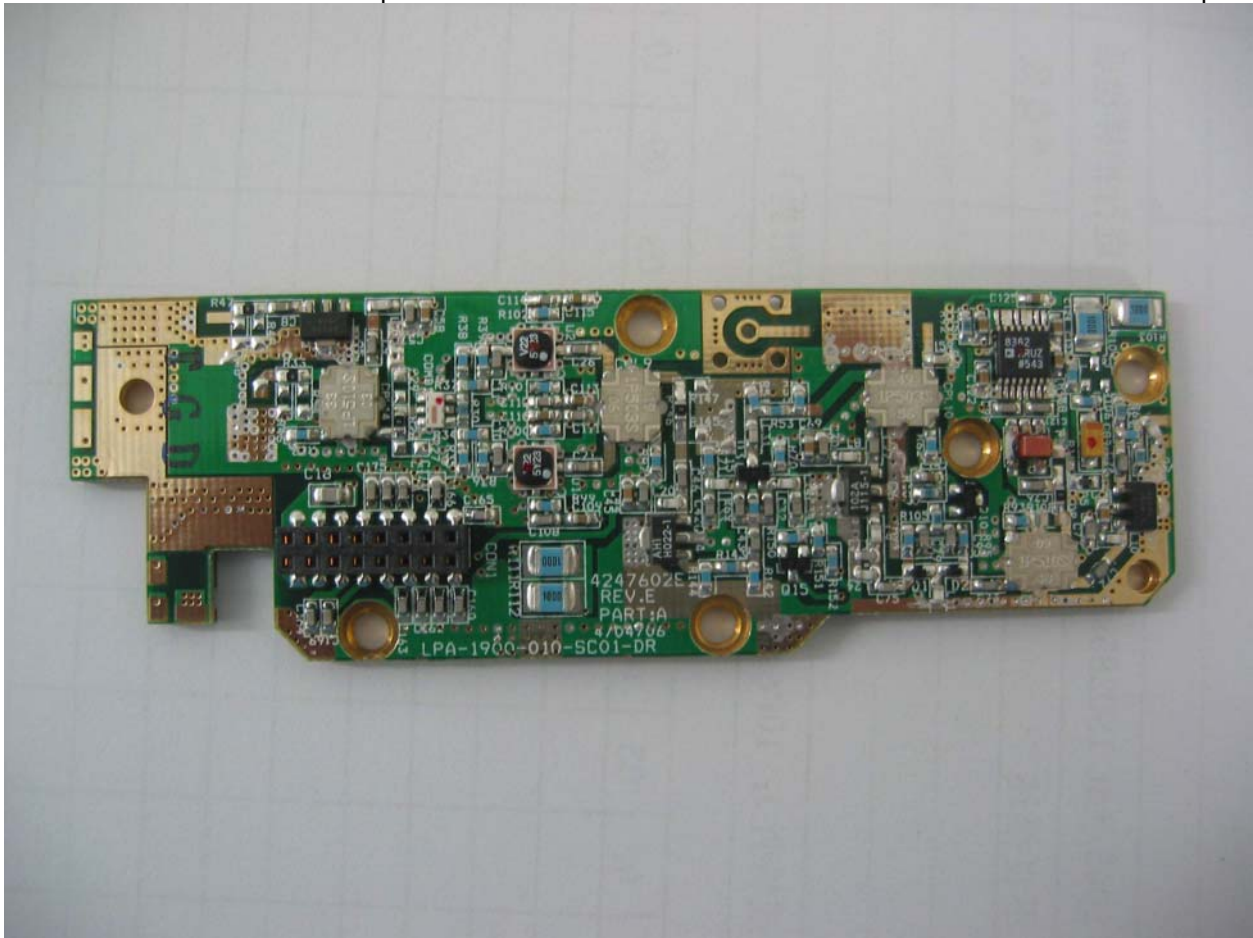
BravoTech Linear Power Amplifier LPA1900-010-SC01 - 4247601ERev E Main Board - Part B Top



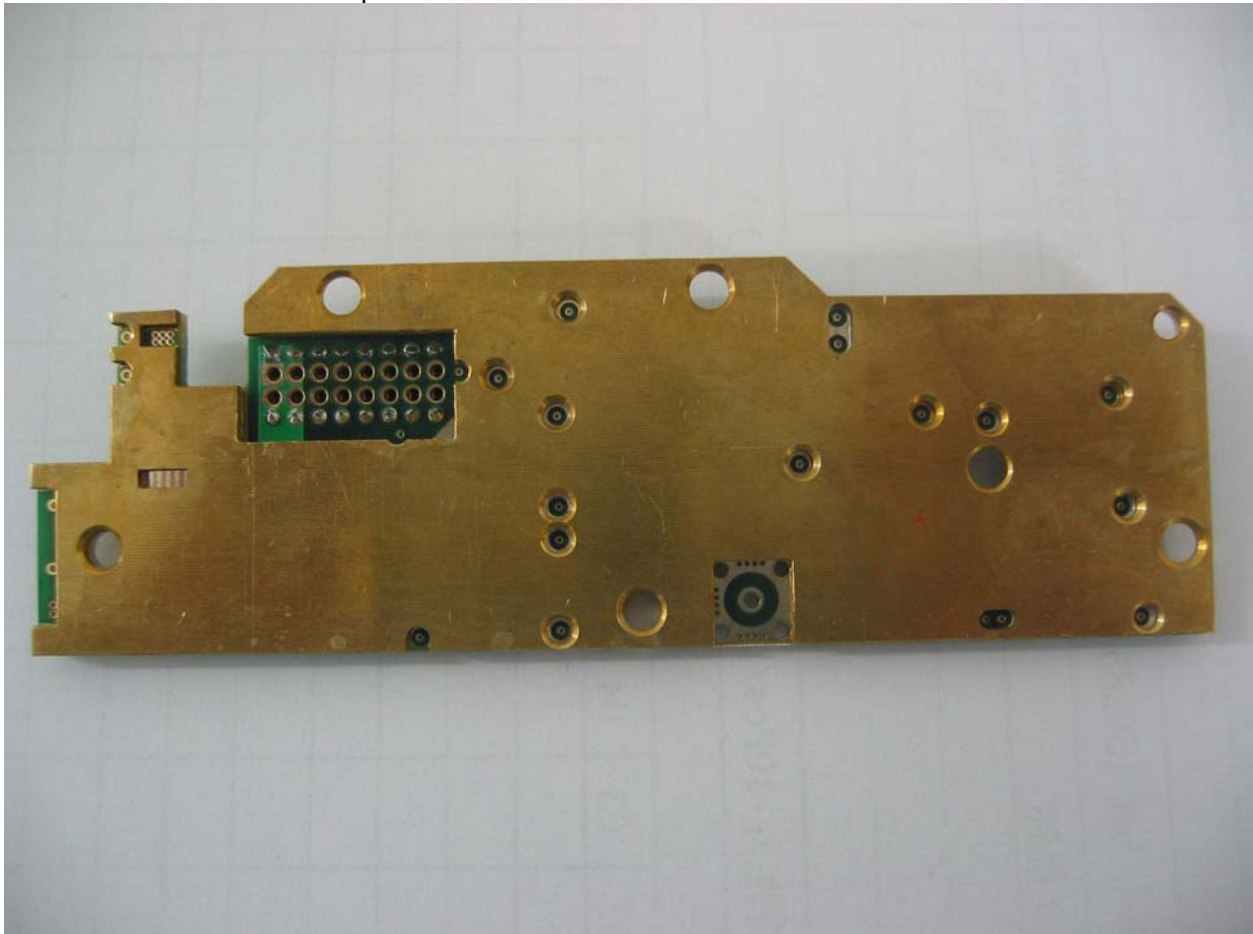
BravoTech Linear Power Amplifier LPA1900-010-SC01 - 4247601ERev E Main Board - Part B Bottom



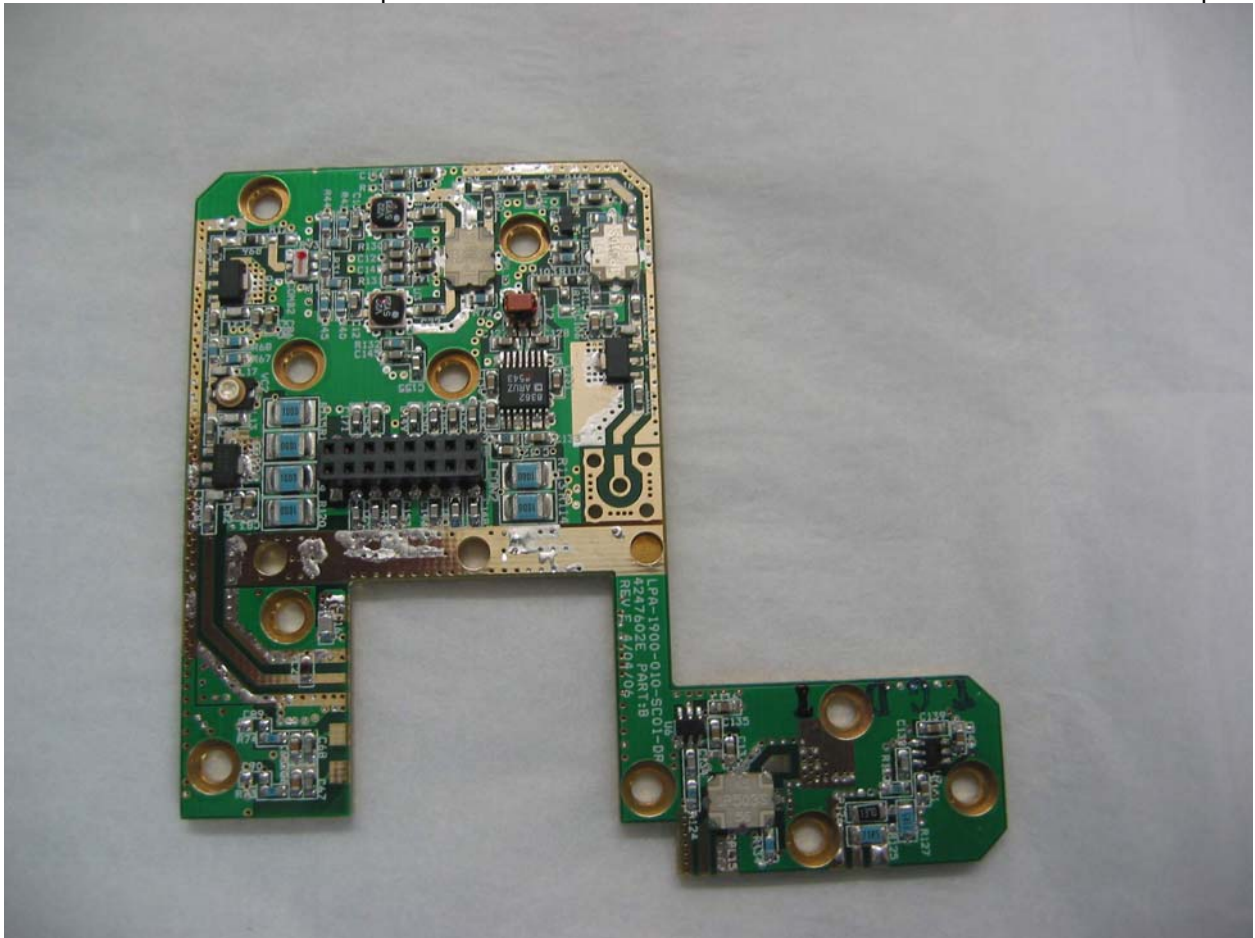
BravoTech Linear Power Amplifier LPA1900-010-SC01 - 4247602ERev E Driver Board - Part A Top



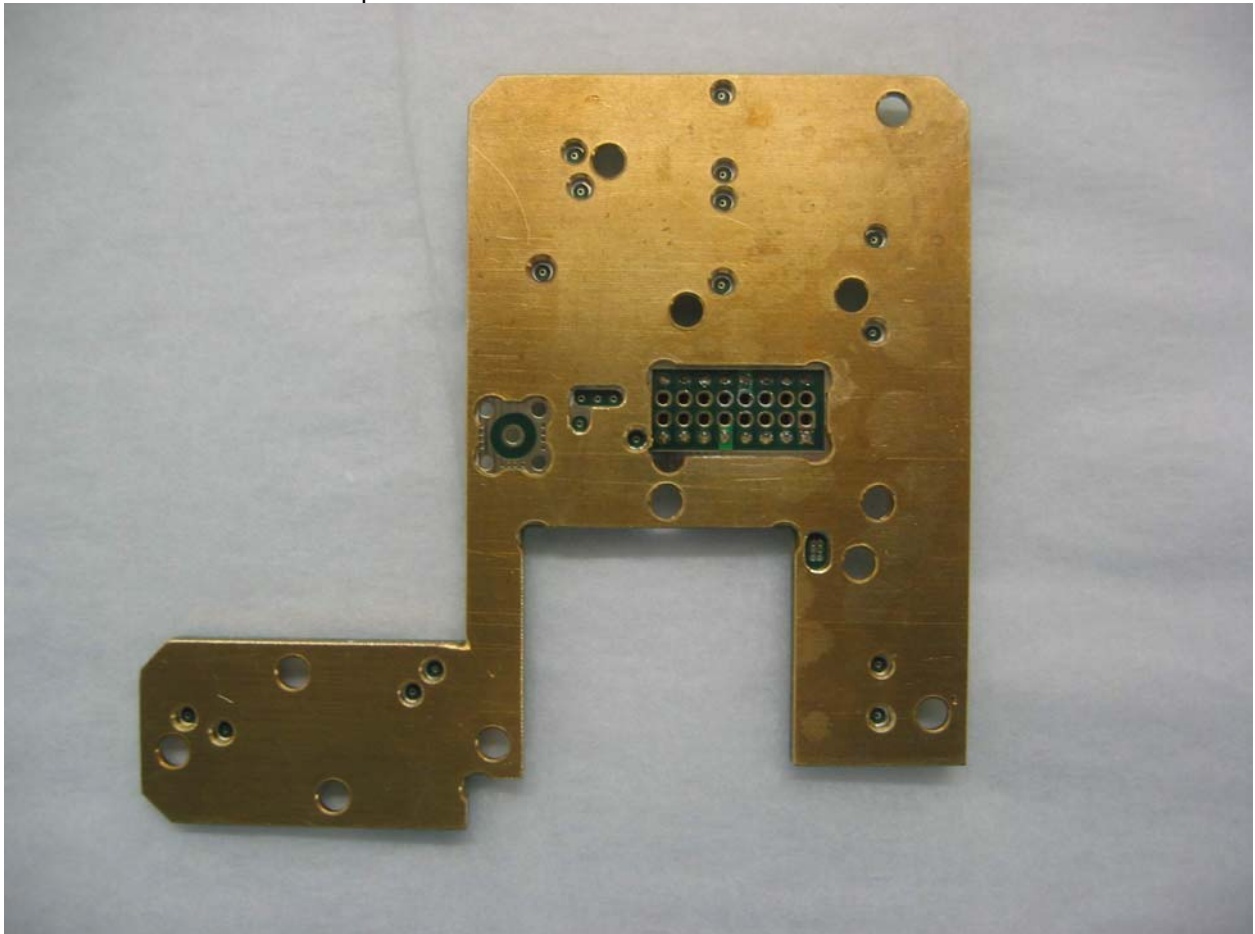
BravoTech Linear Power Amplifier LPA1900-010-SC01 - 4247602ERev E Driver Board - Part A Bottom



BravoTech Linear Power Amplifier LPA1900-010-SC01 - 4247602ERev E Driver Board - Part B Top

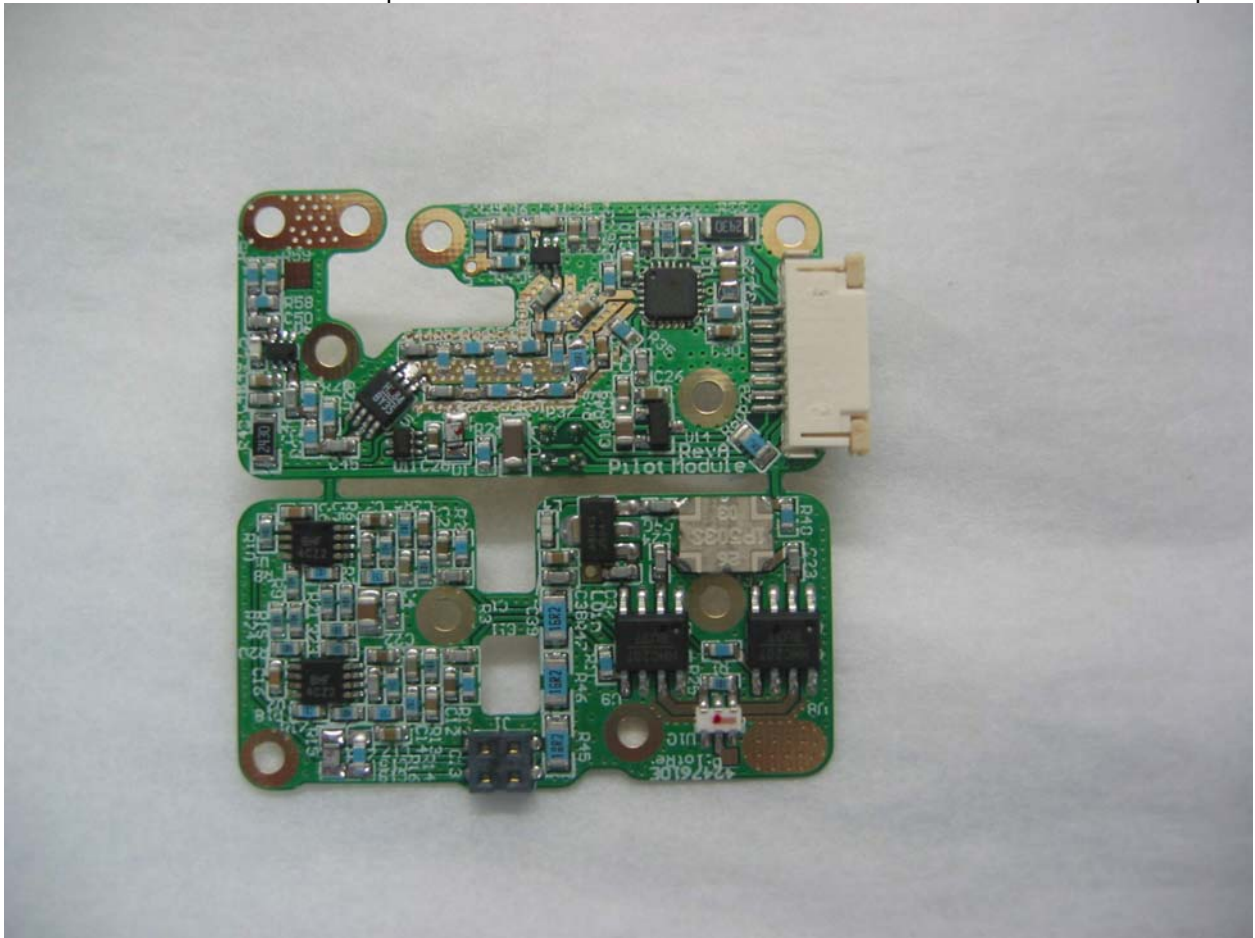


BravoTech Linear Power Amplifier LPA1900-010-SC01 - 4247602ERev E Driver Board - Part B Bottom





BravoTech Linear Power Amplifier LPA1900-010-SC01 - 4247610E Rev A Pilot Board - Part A Top



BravoTech Linear Power Amplifier LPA1900-010-SC01 - 4247610E Rev A Pilot Board - Part A Bottom

