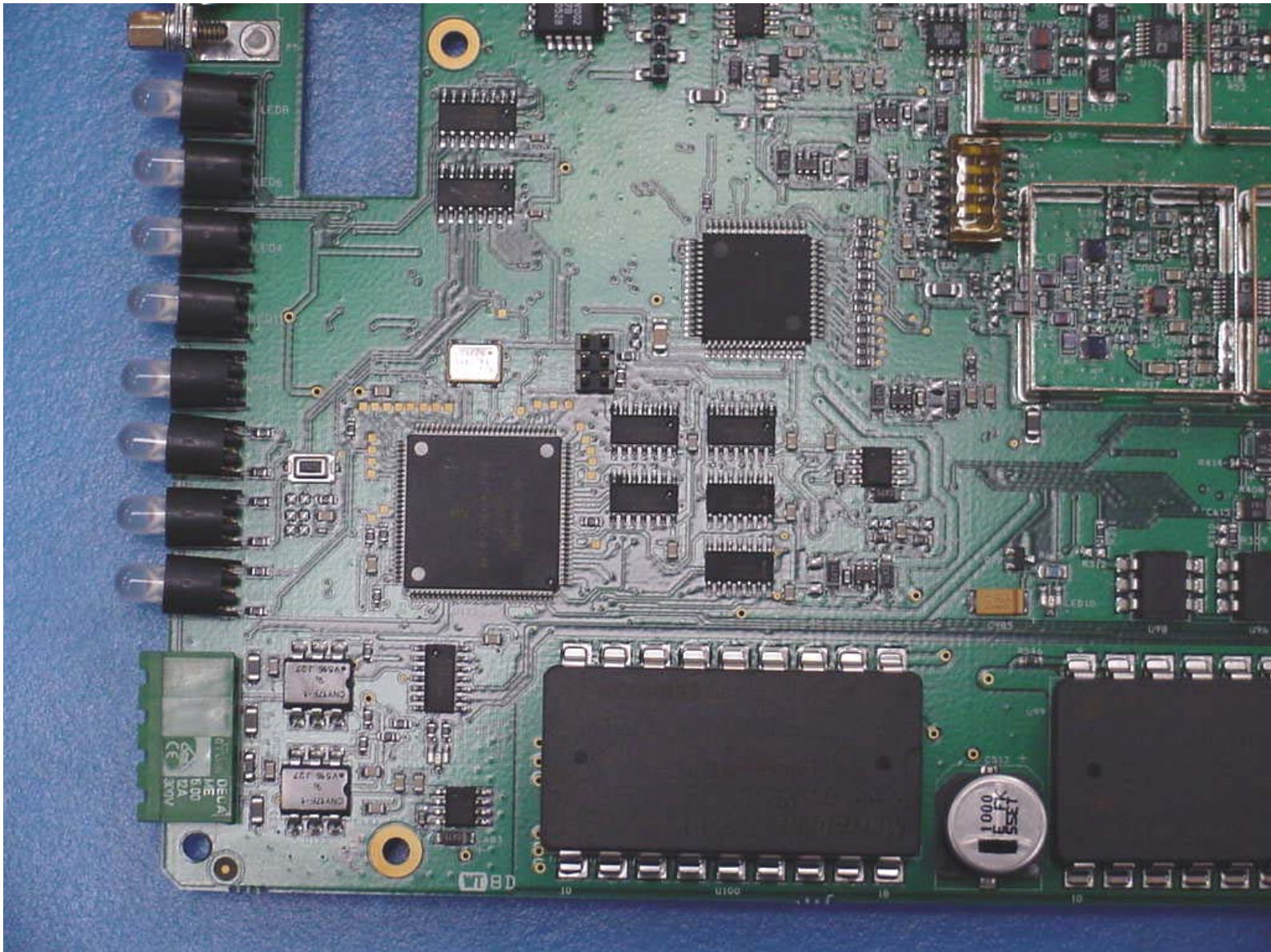
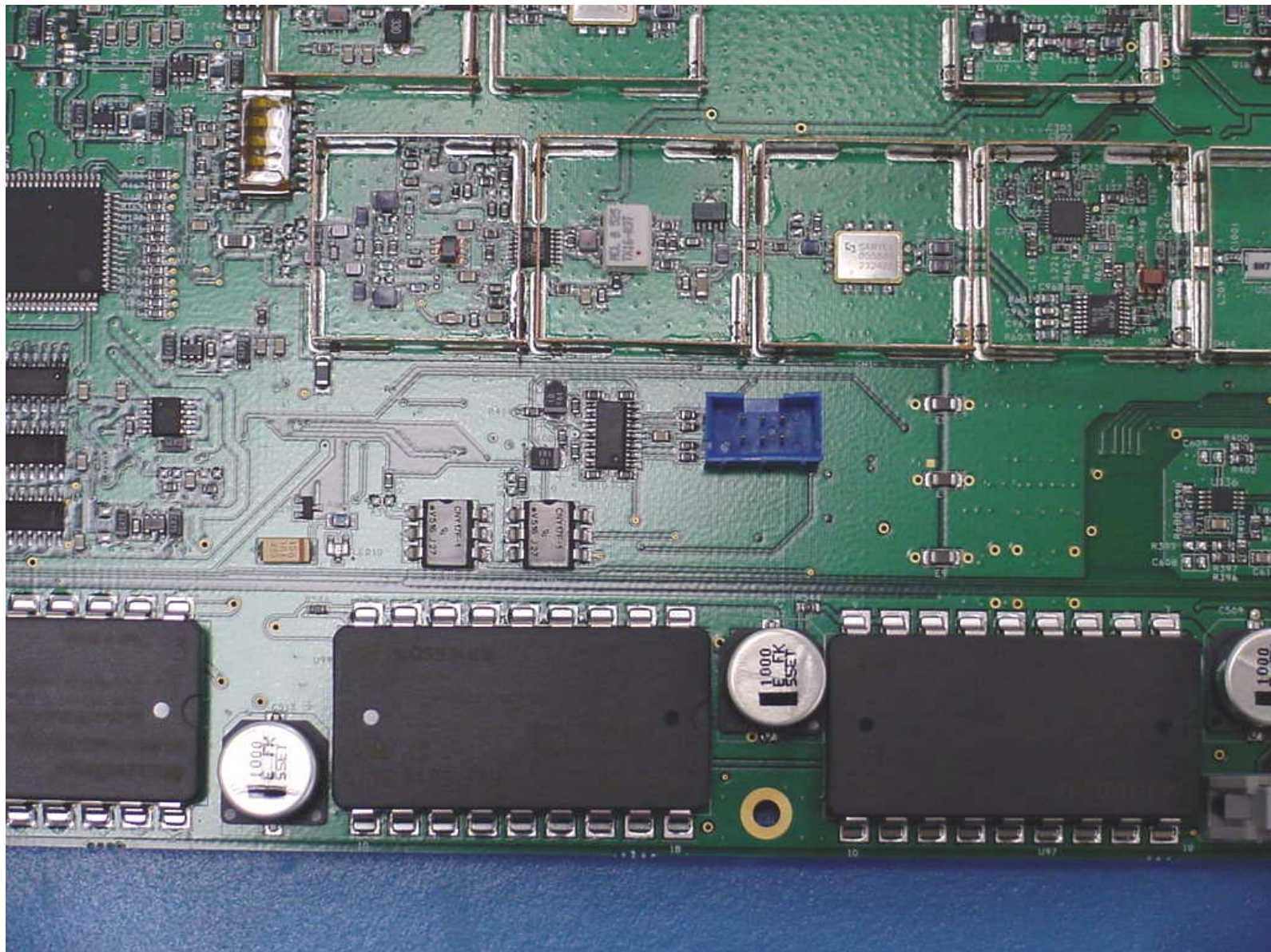


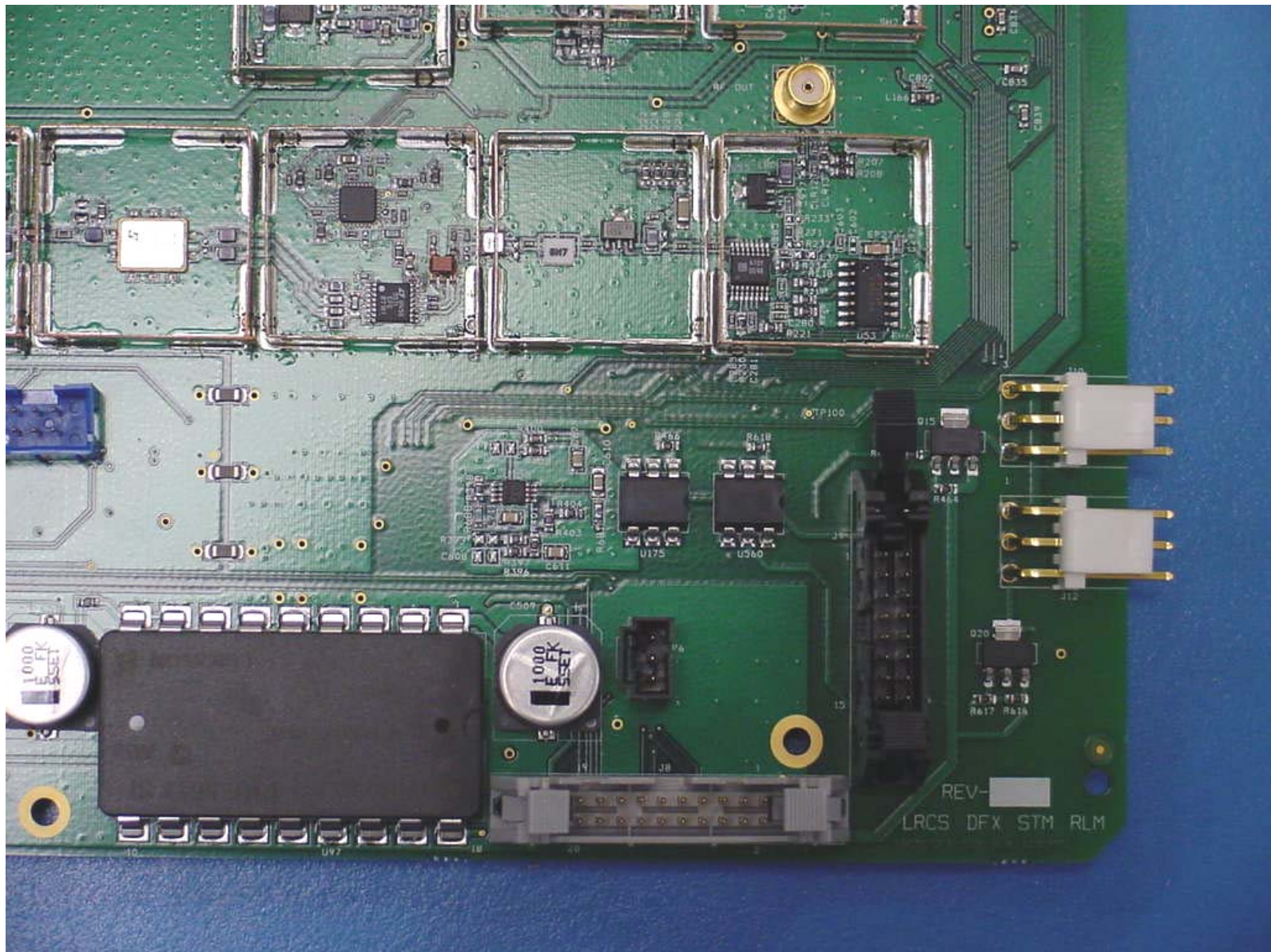
Digivance LRCS 1900 MHz  
STM Board  
Top View



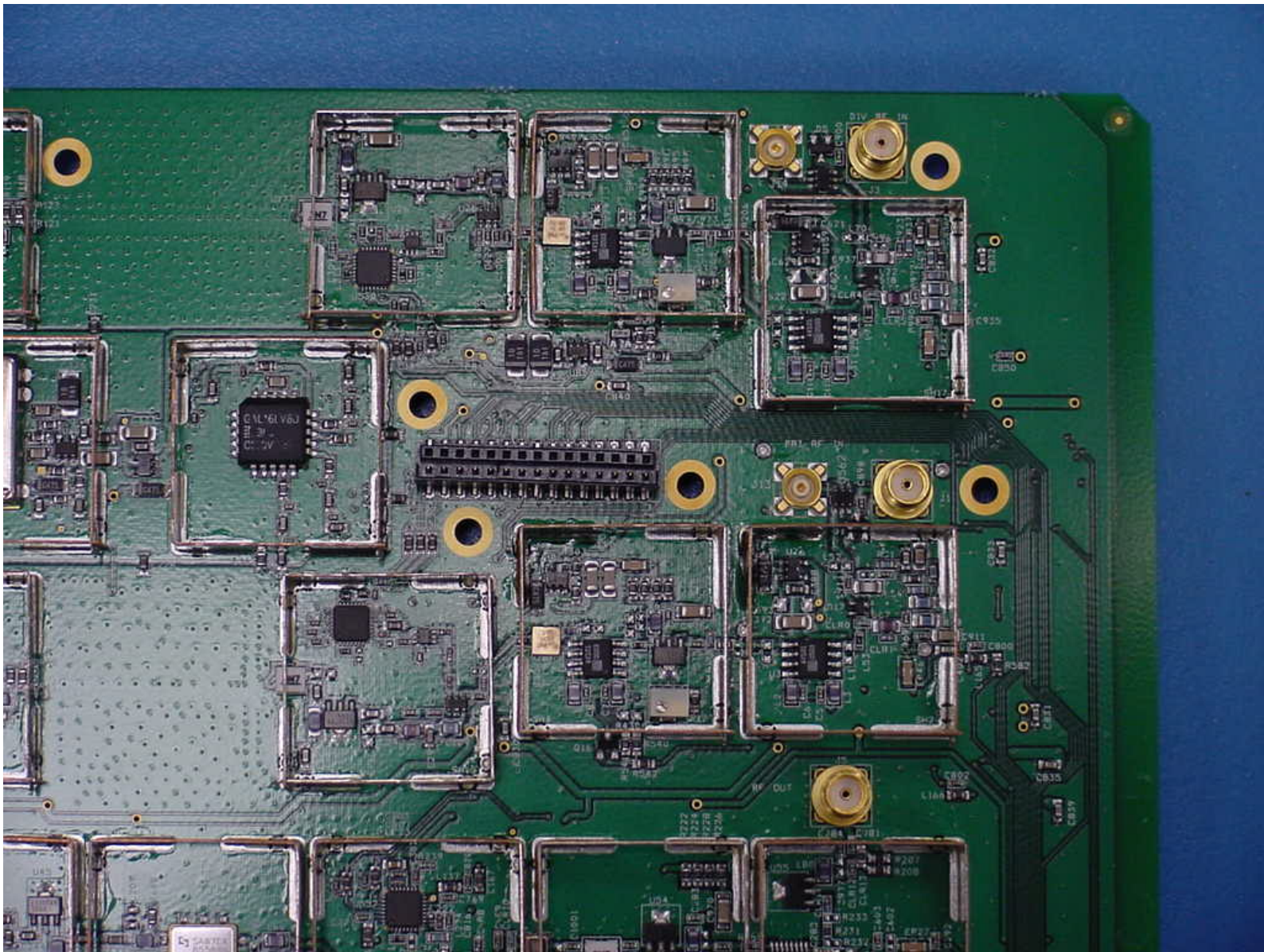
Digivance LRCS 1900 MHz  
STM Board  
Top View 1



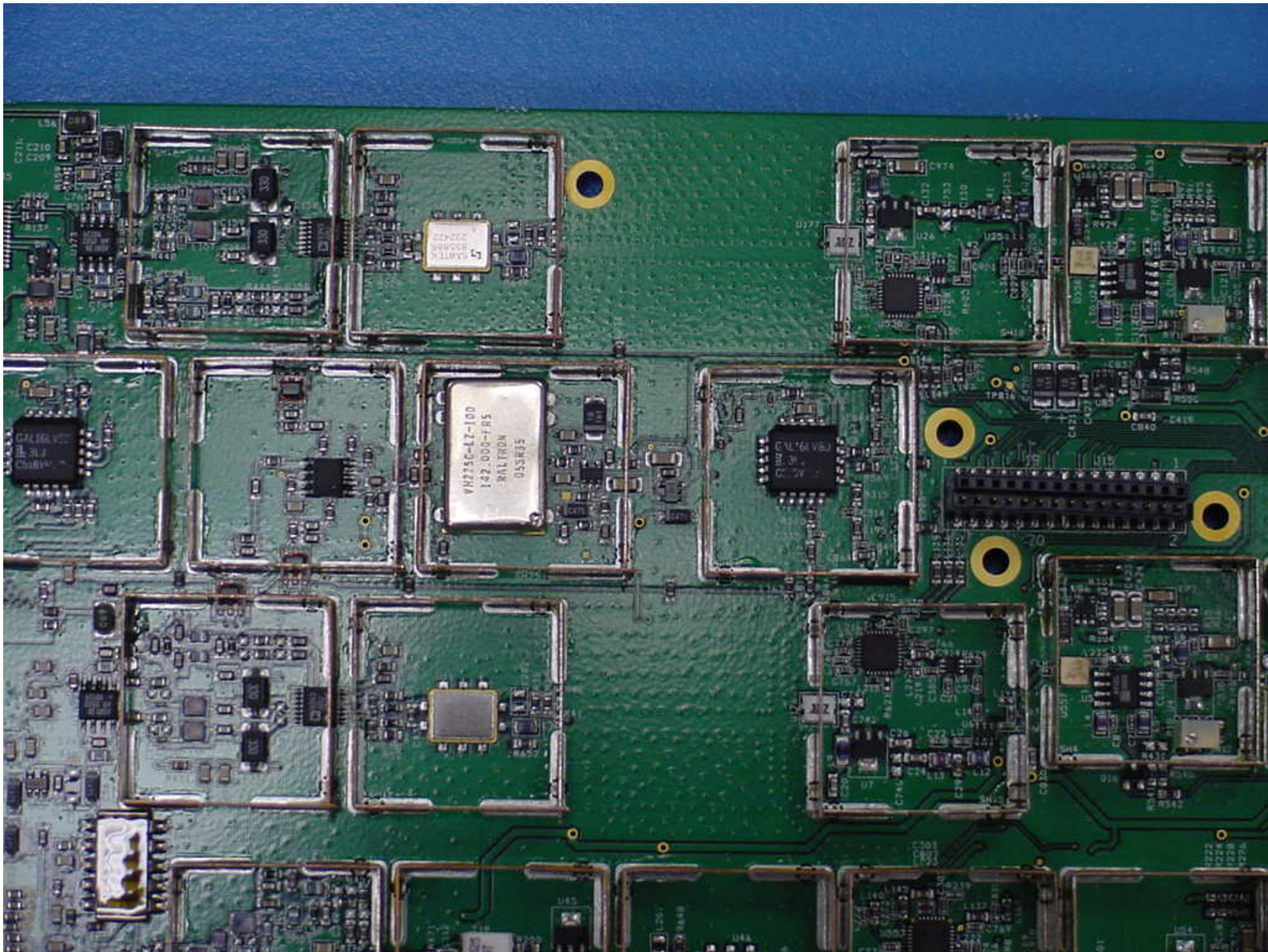
Digivance LRCS 1900 MHz  
STM Board  
Top View 2



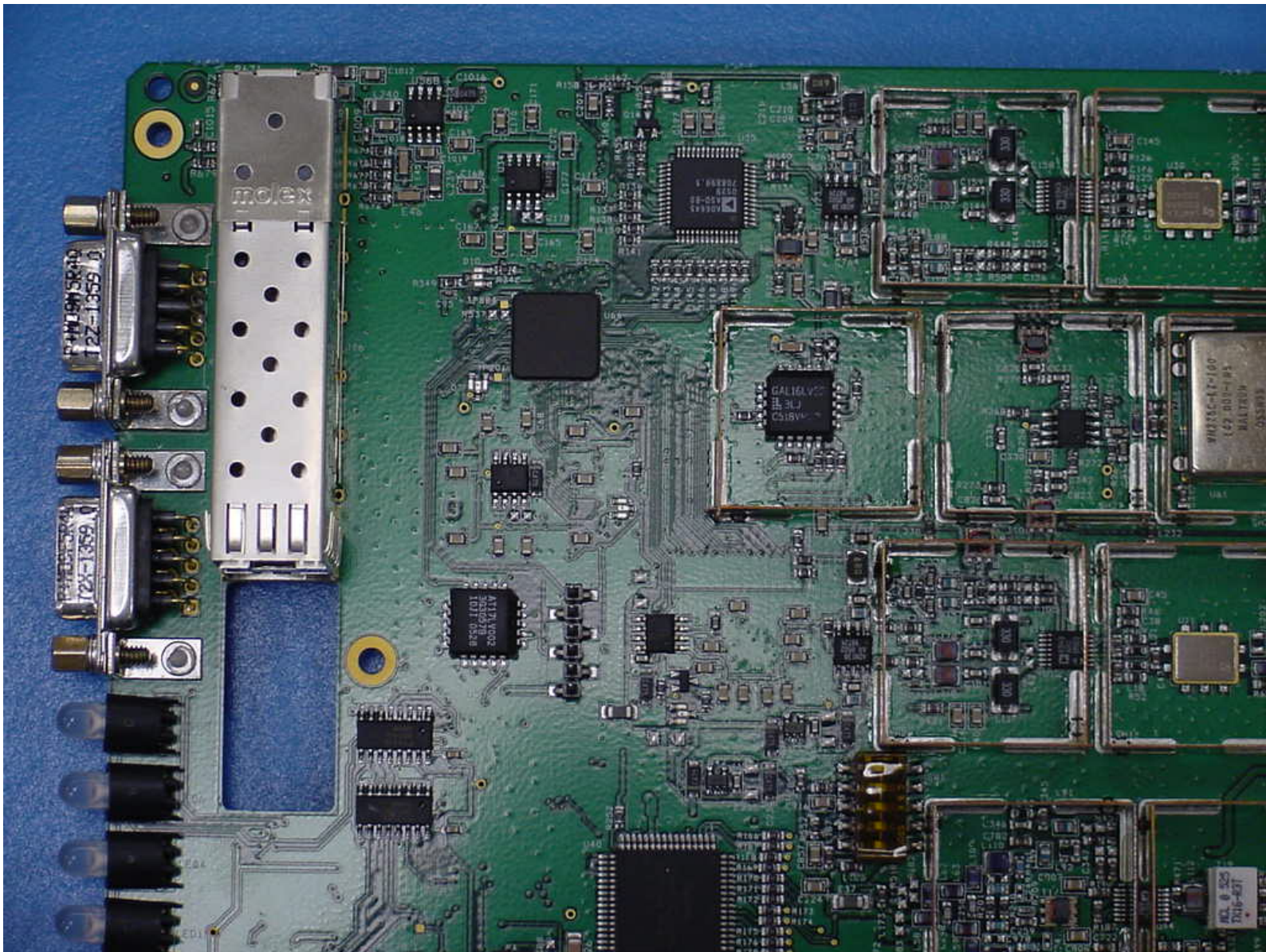
Digivance LRCS 1900 MHz  
STM Board  
Top View 3



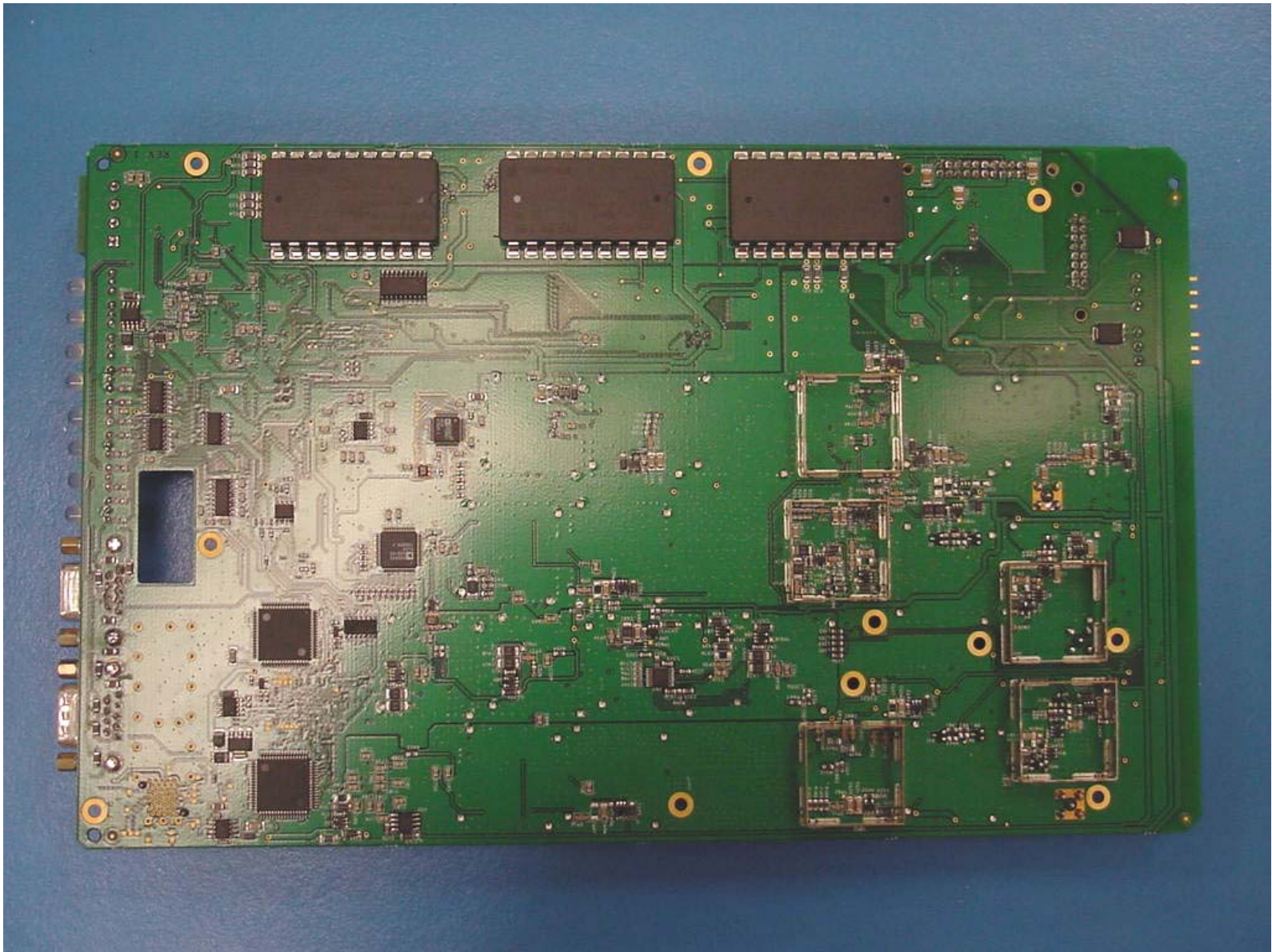
Digivance LRCS 1900 MHz  
STM Board  
Top View 4



Digivance LRCS 1900 MHz  
STM Board  
Top View 5

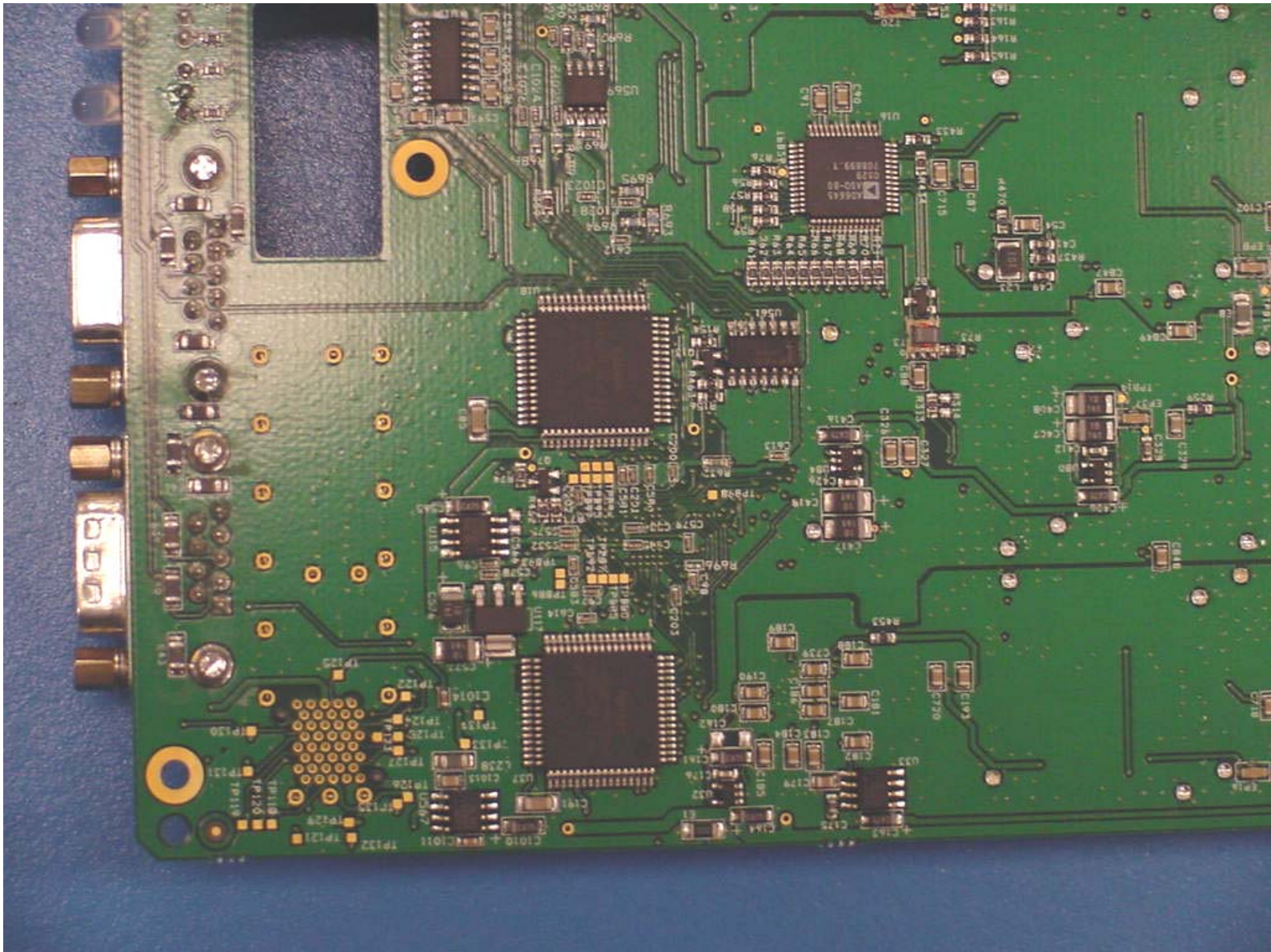


Digivance LRCS 1900 MHz  
STM Board  
Top View 6

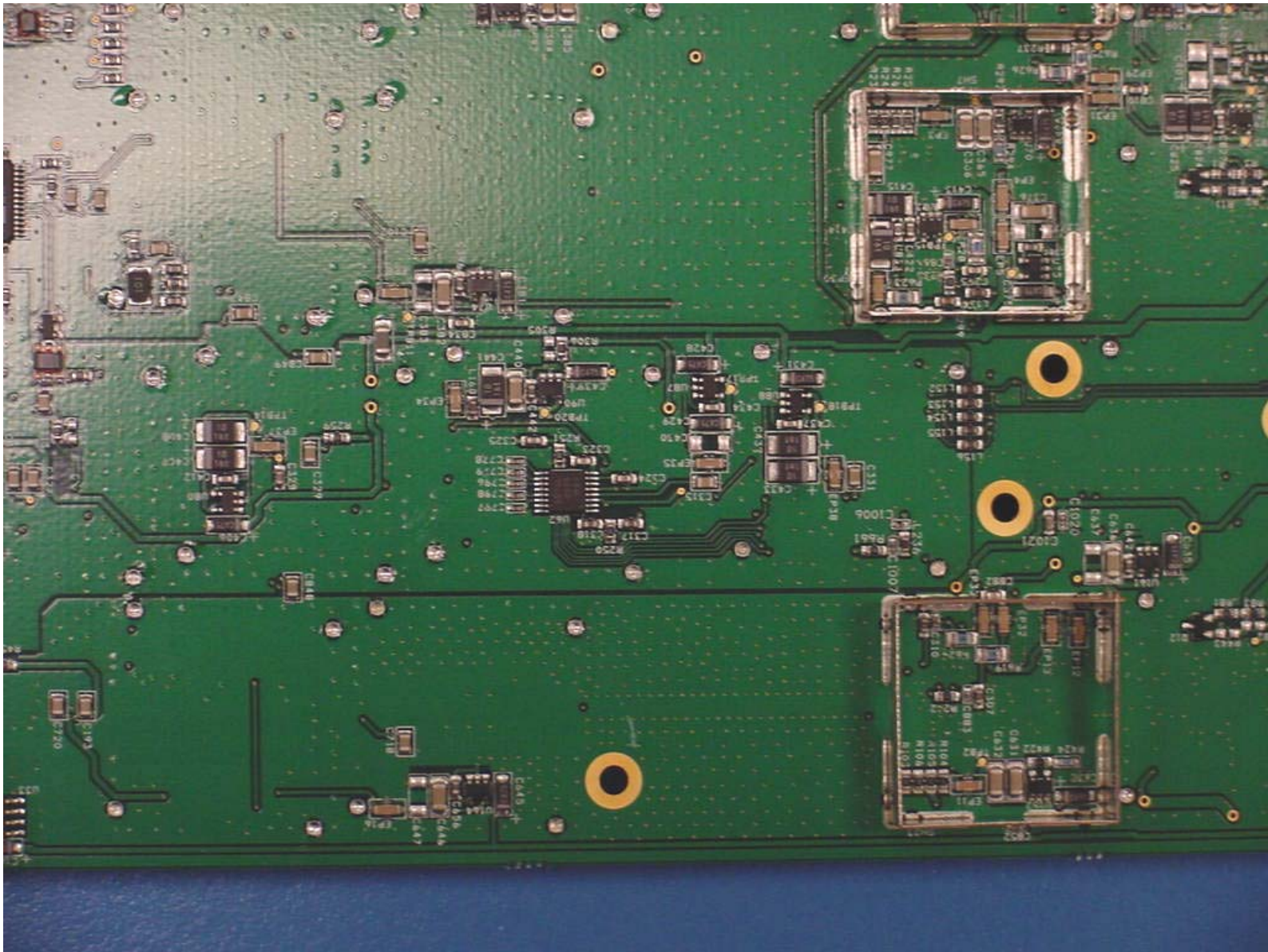


Digivance LRCS 1900 MHz  
STM Board  
Bottom View

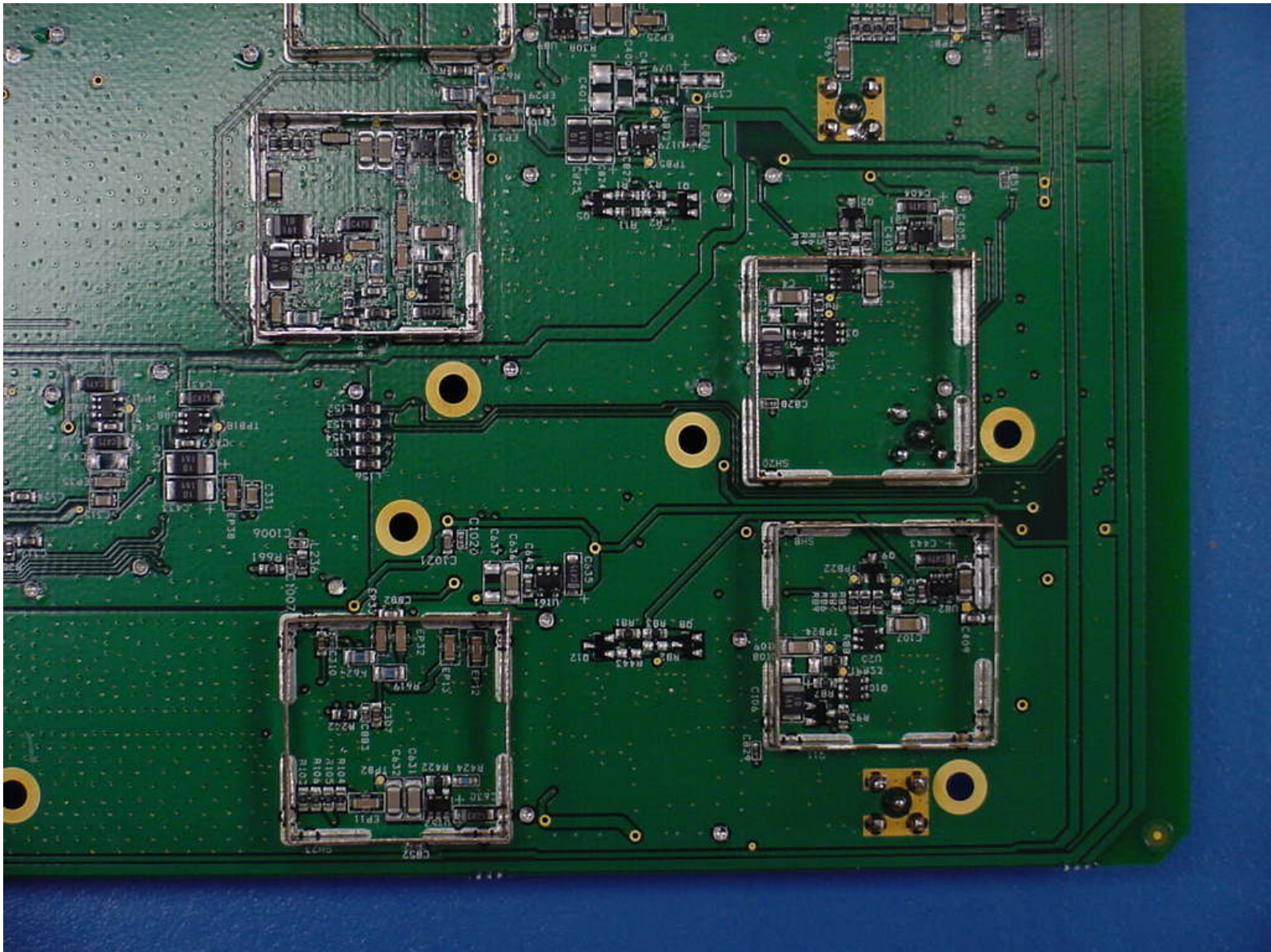




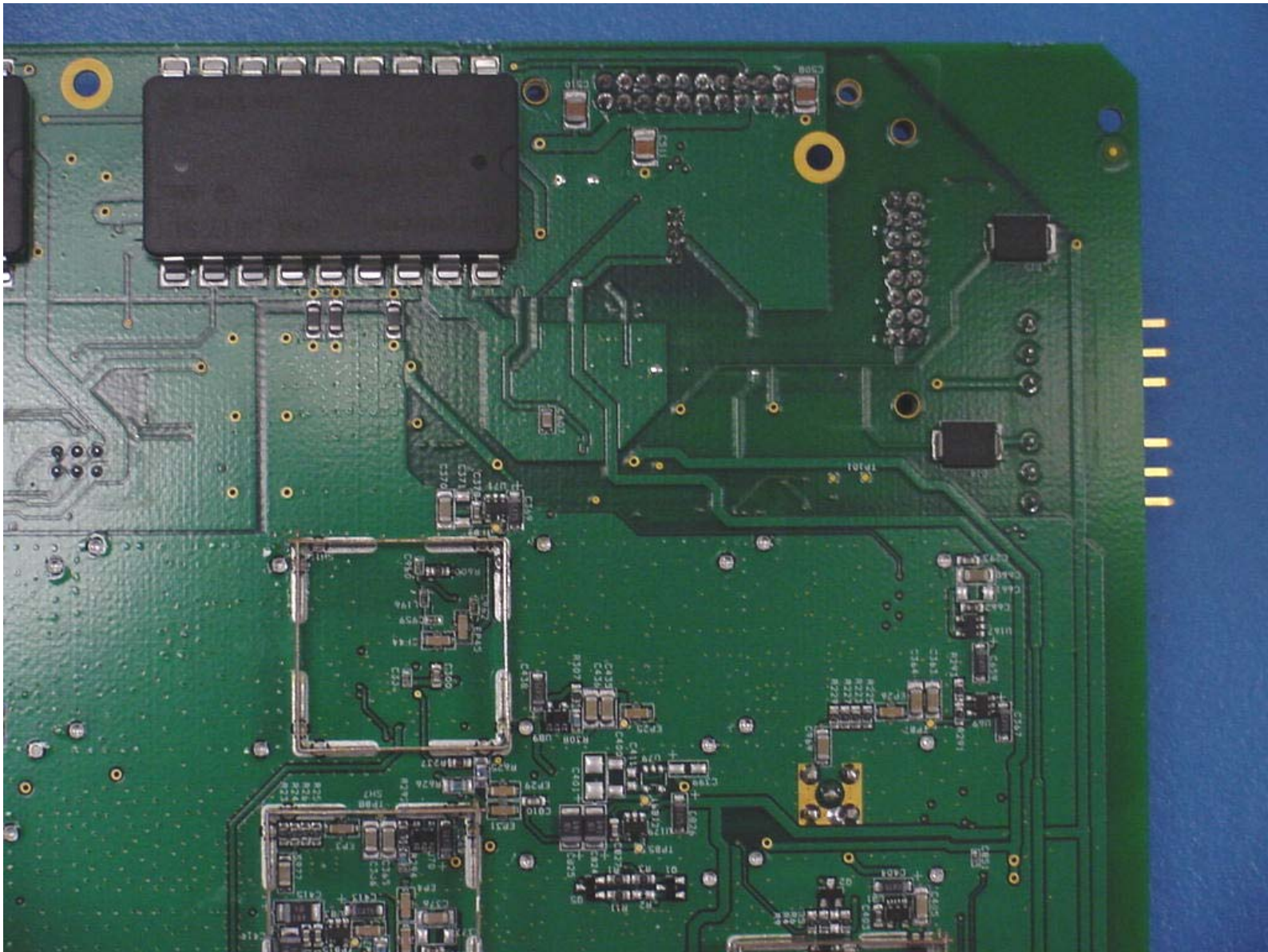
Digivance LRCs 1900 MHz  
STM Board  
Bottom View 1



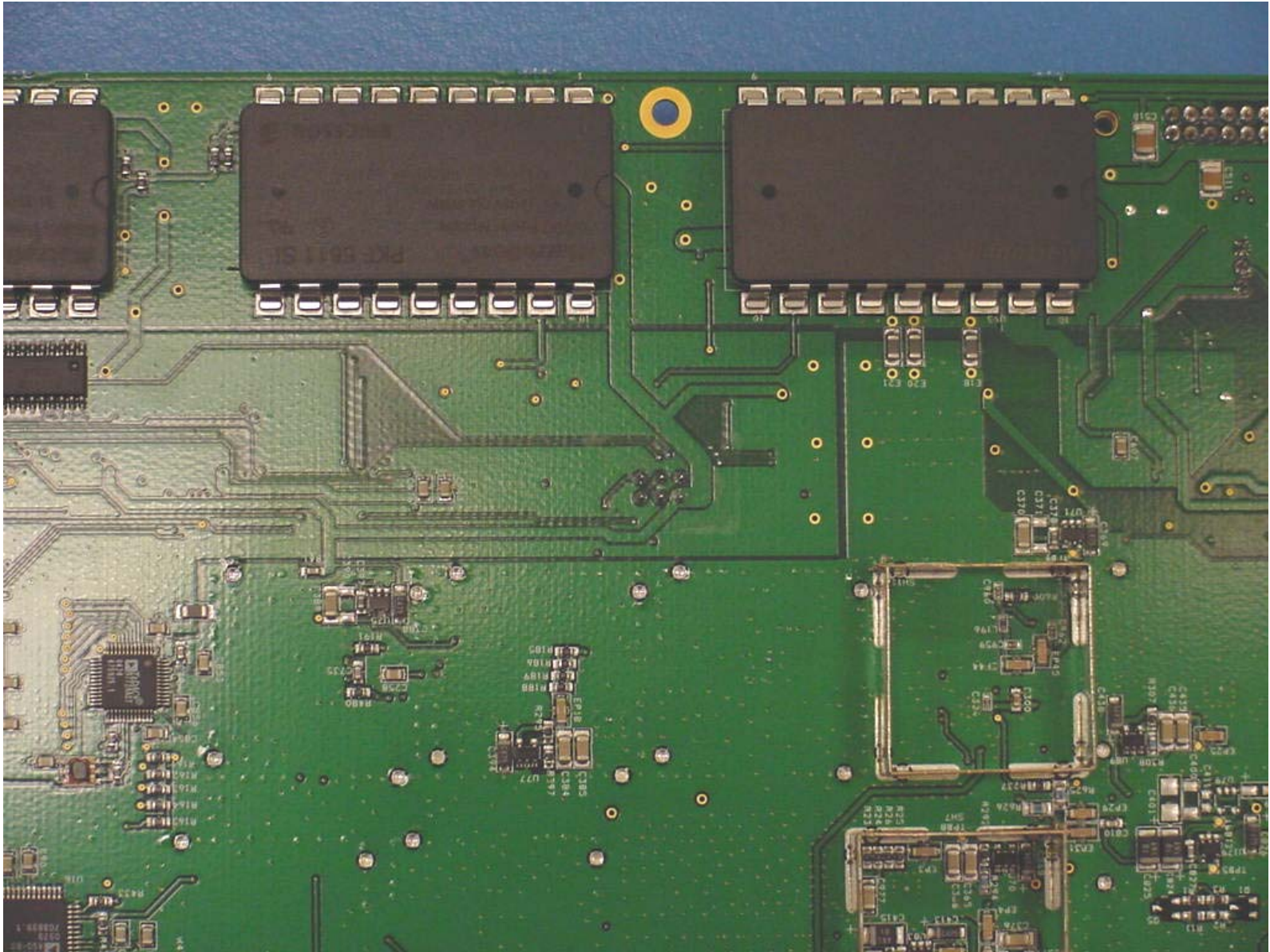
Digivance LRCS 1900 MHz  
STM Board  
Bottom View 2



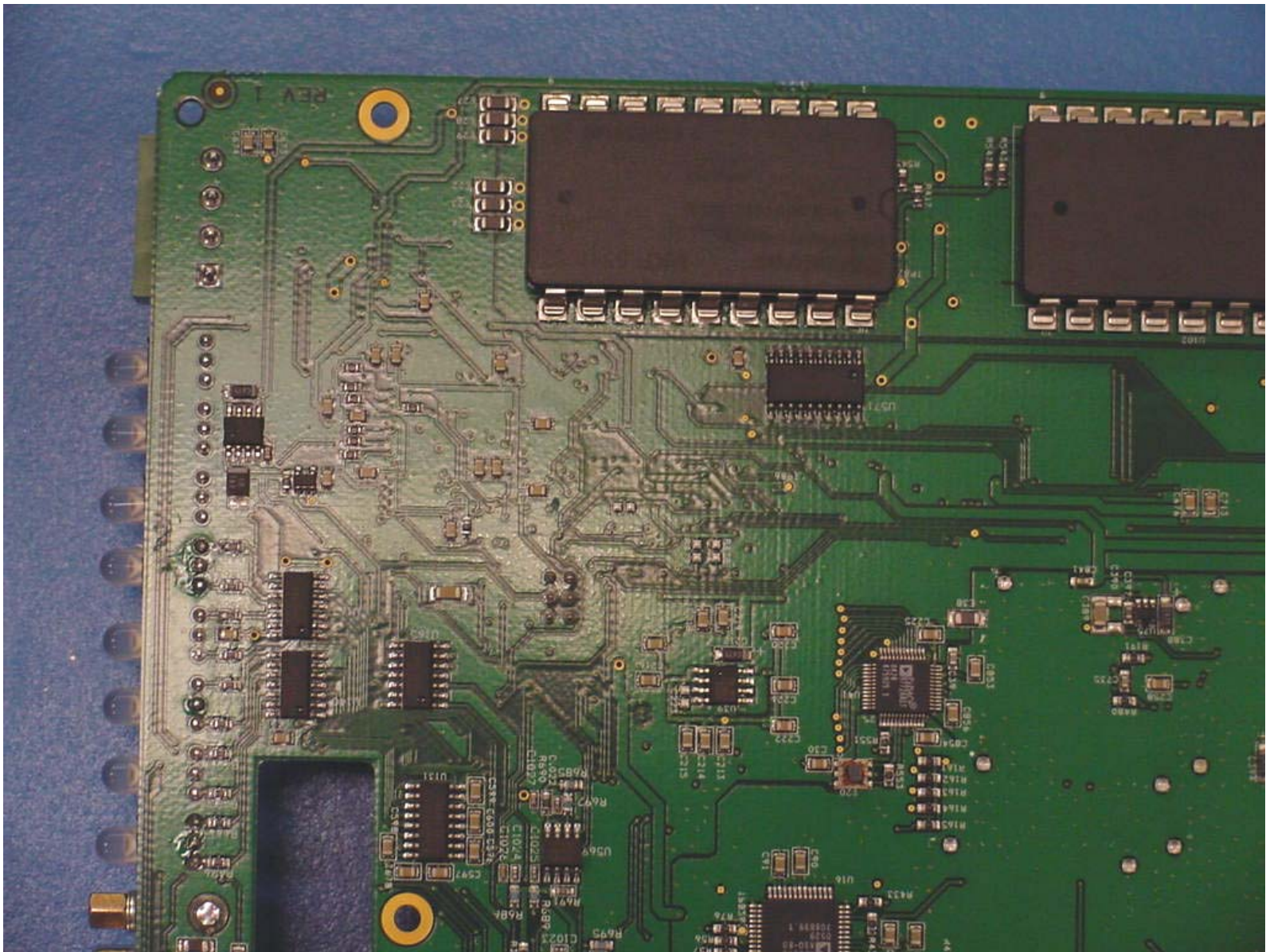
Digivance LRCS 1900 MHz  
STM Board  
Bottom View 3



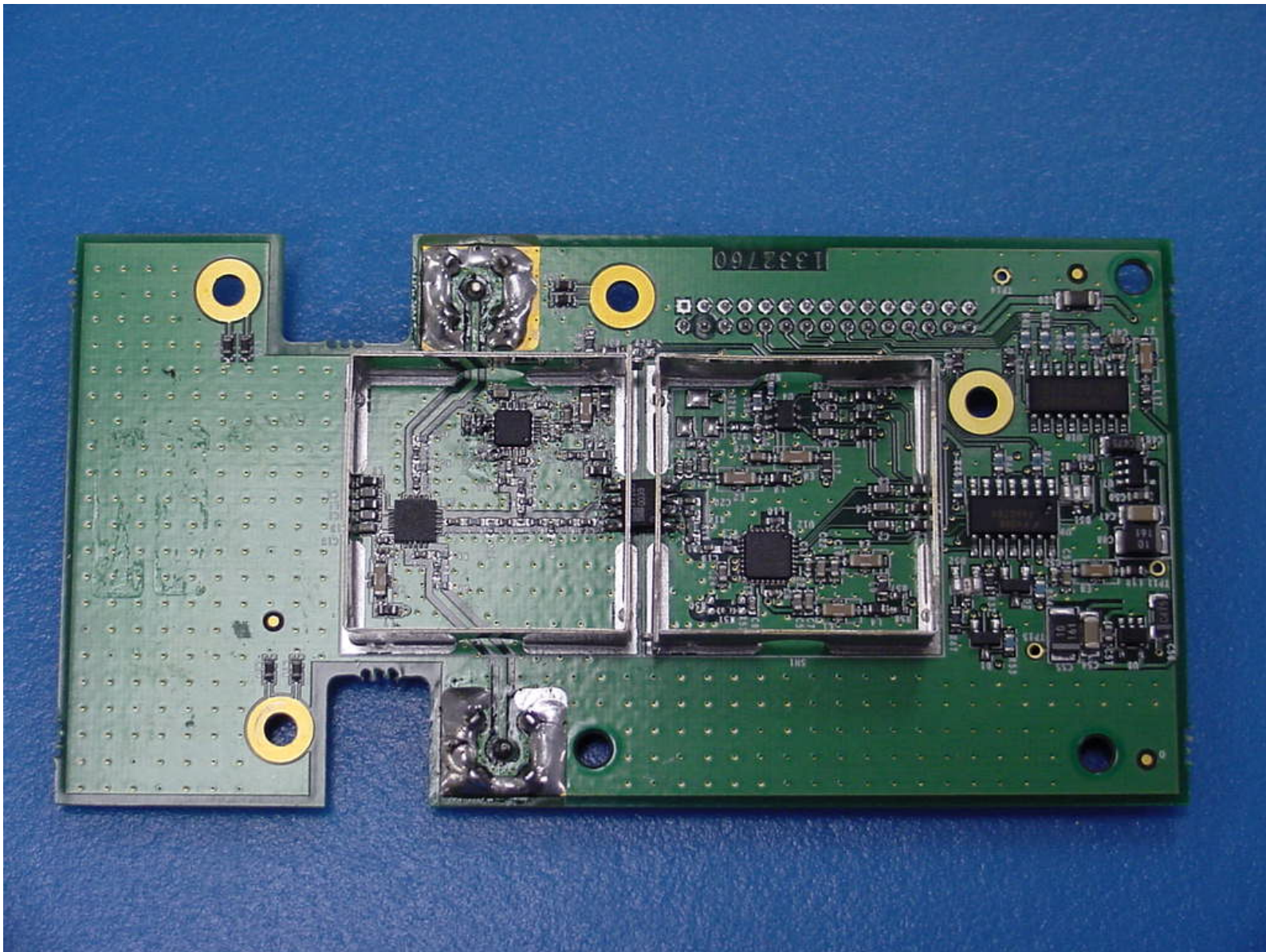
Digivance LRCS 1900 MHz  
STM Board  
Bottom View 4



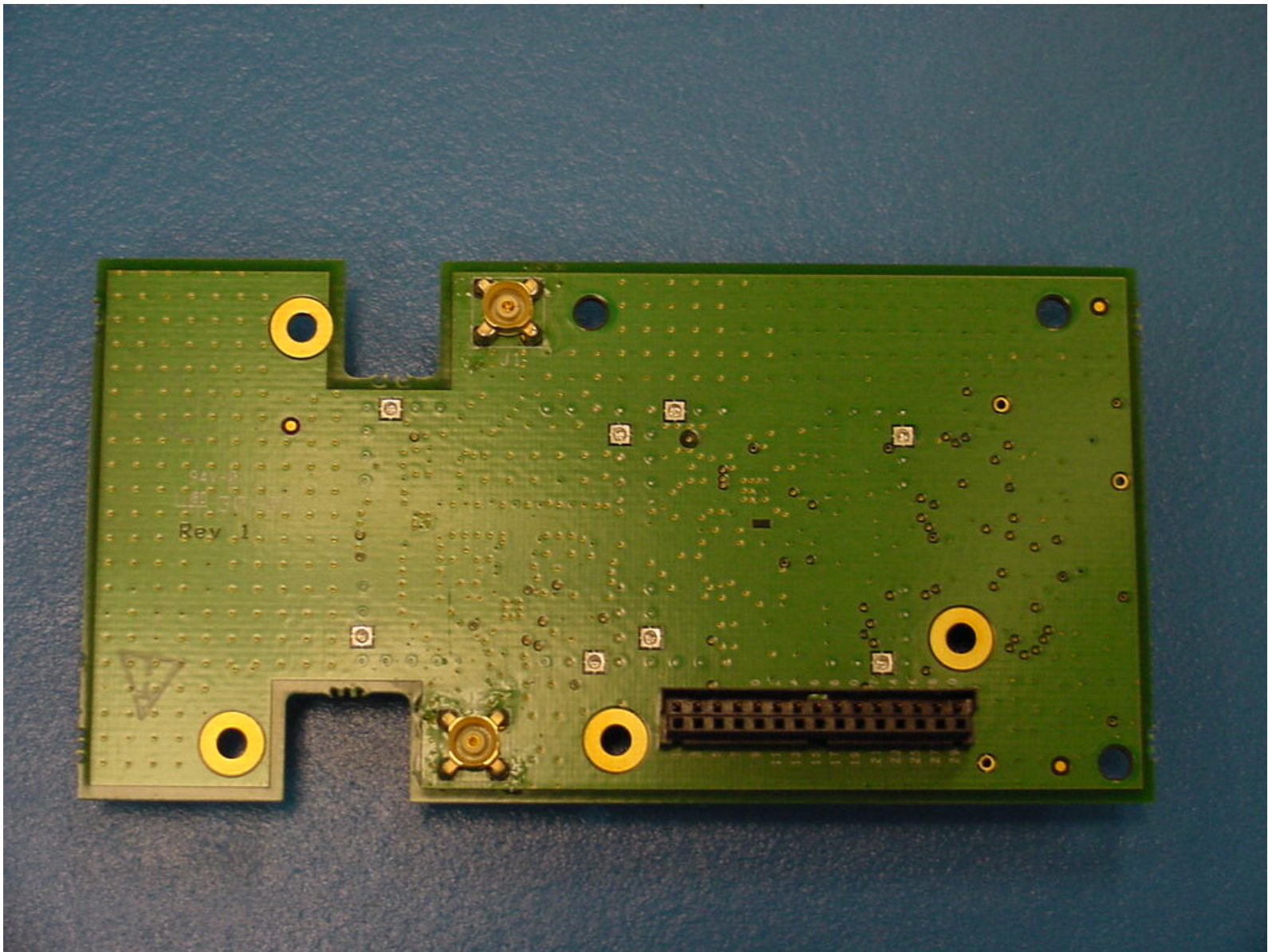
Digivance LRCS 1900 MHz  
STM Board  
Bottom View 5



Digivance LRCS 1900 MHz  
STM Board  
Bottom View 6



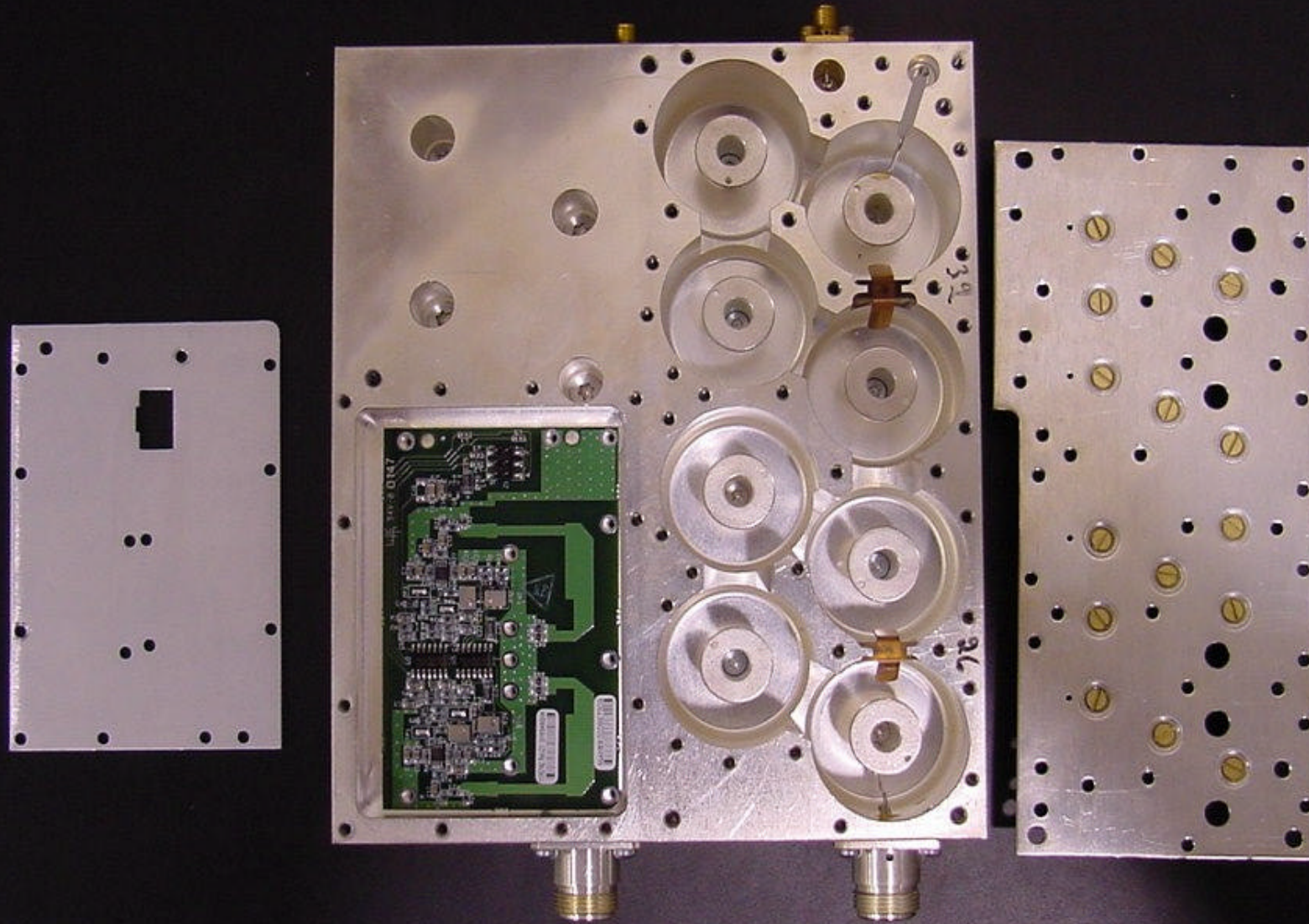
Digivance Remote Reverse Link Monitor Board  
Remote - Daughter Card  
Top View



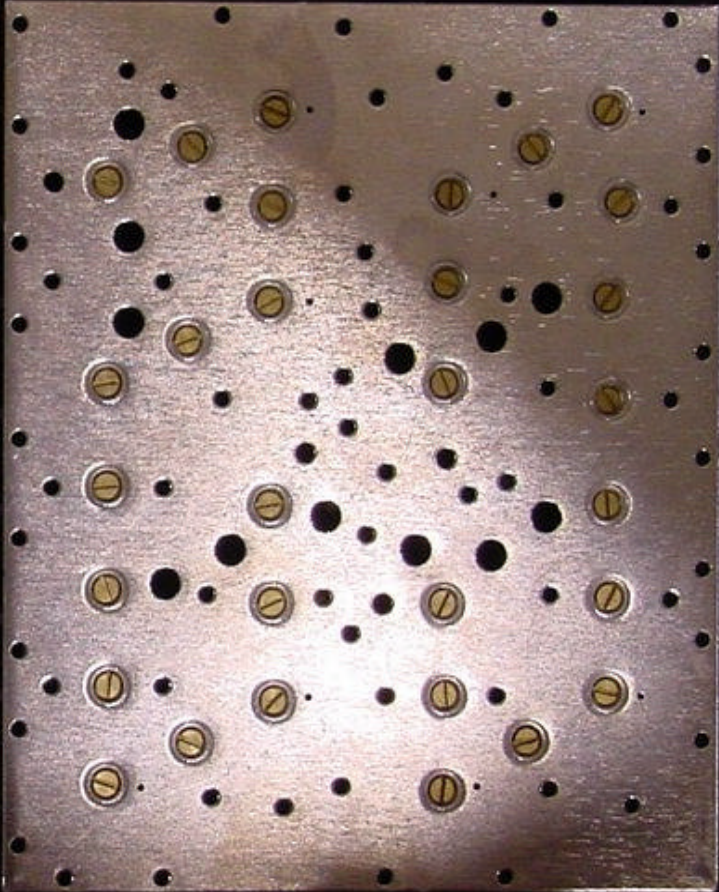
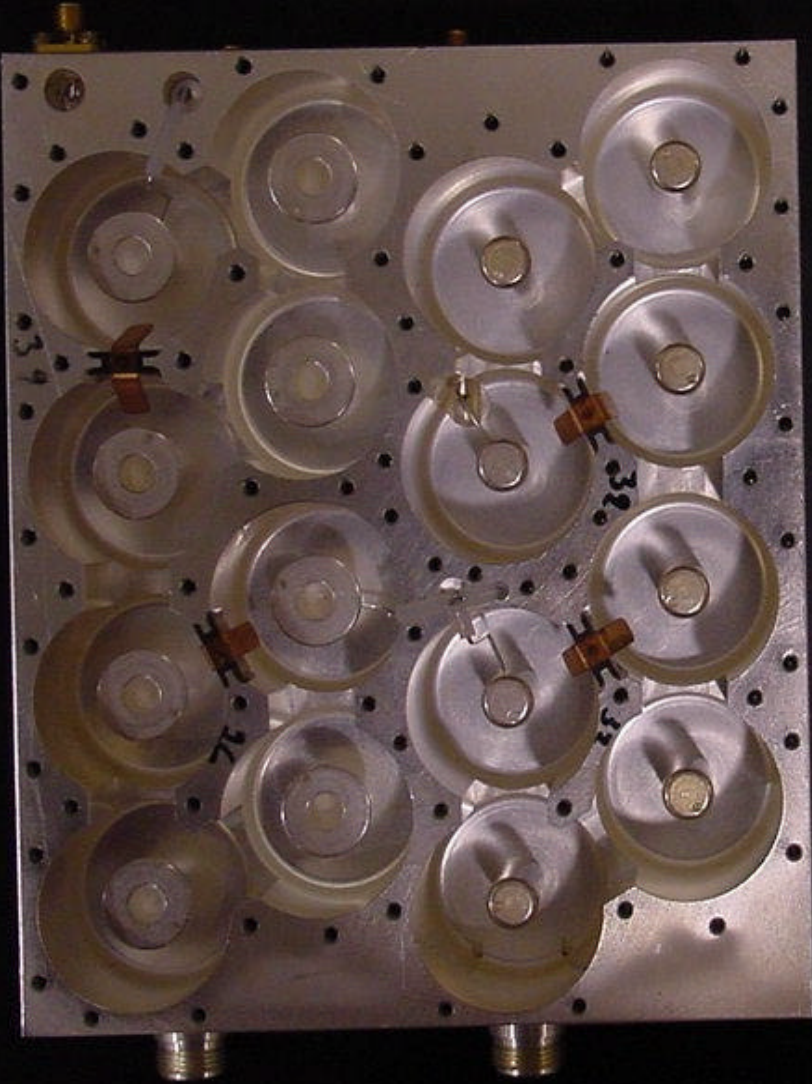
Digivance Remote Reverse Link Monitor Board  
Remote - Daughter Card  
Bottom View



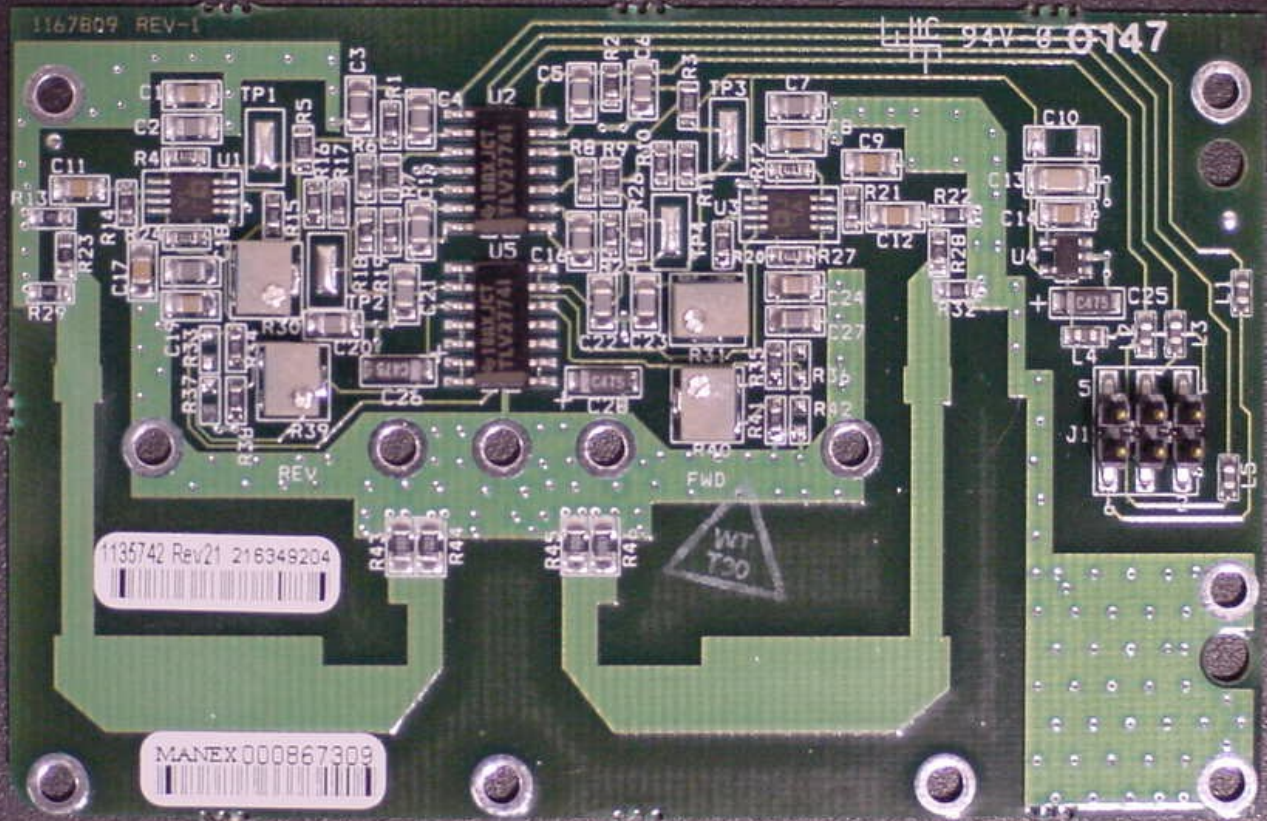
Digivance LRCS 1900 MHz Duplexer  
Top Open View - Typical



Digivance LRCS 1900 MHz Duplexer  
Bottom Open View - Typical

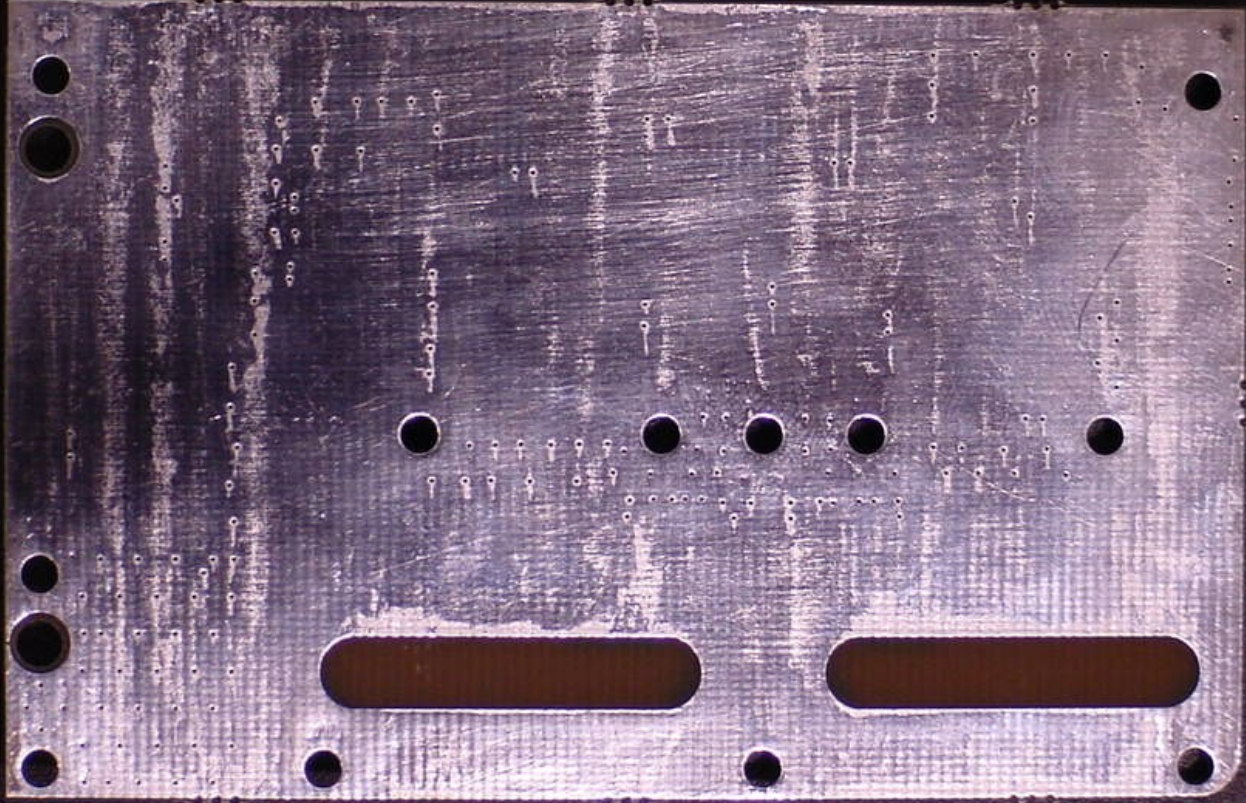


Digivance LRCS Power Monitor Board  
Top View



Digivance LRCS Power Monitor Board  
Top View

Digivance LRCS Power Monitor Board  
Bottom View



Digivance LRCS Power Monitor Board  
Bottom View