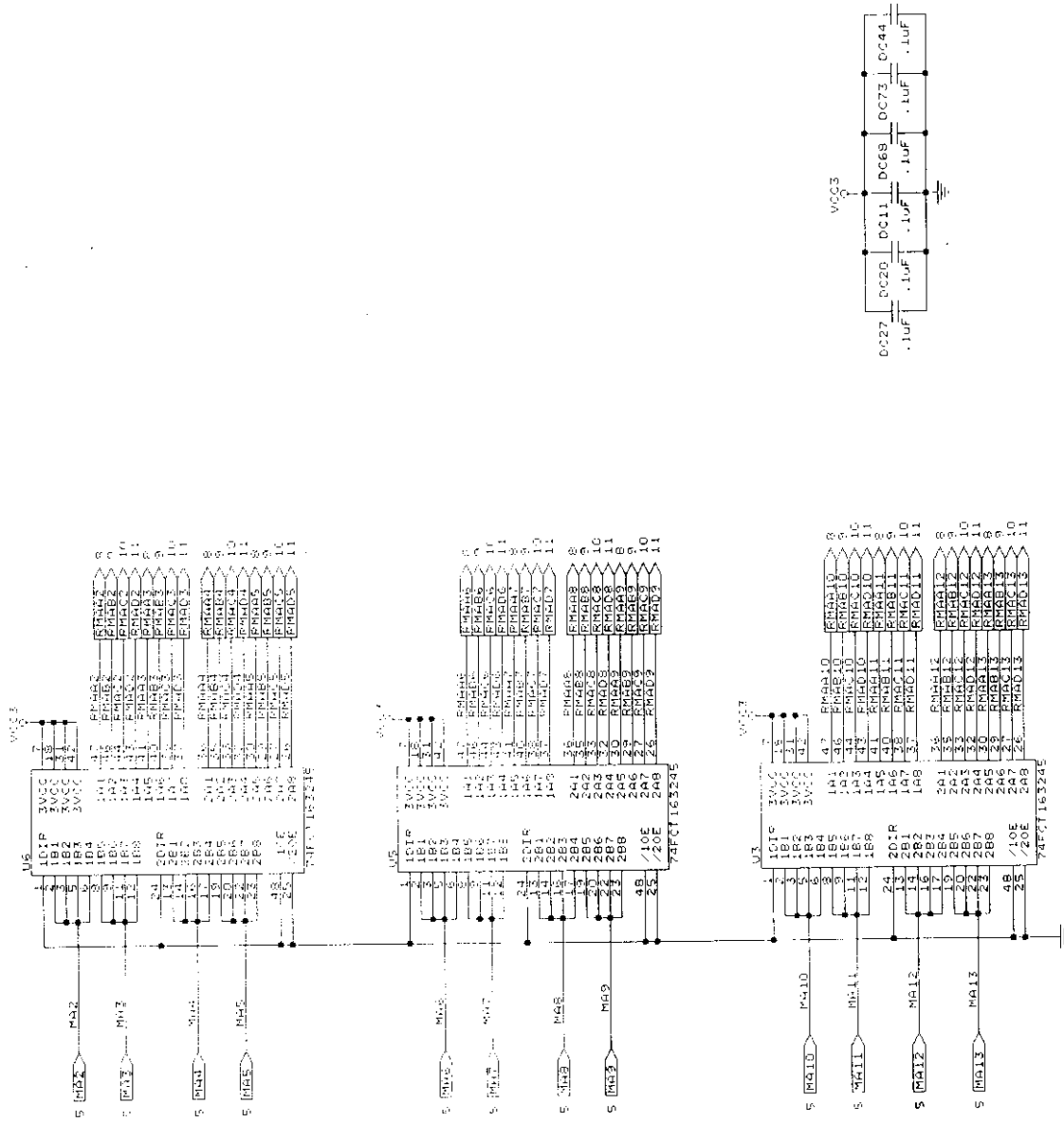


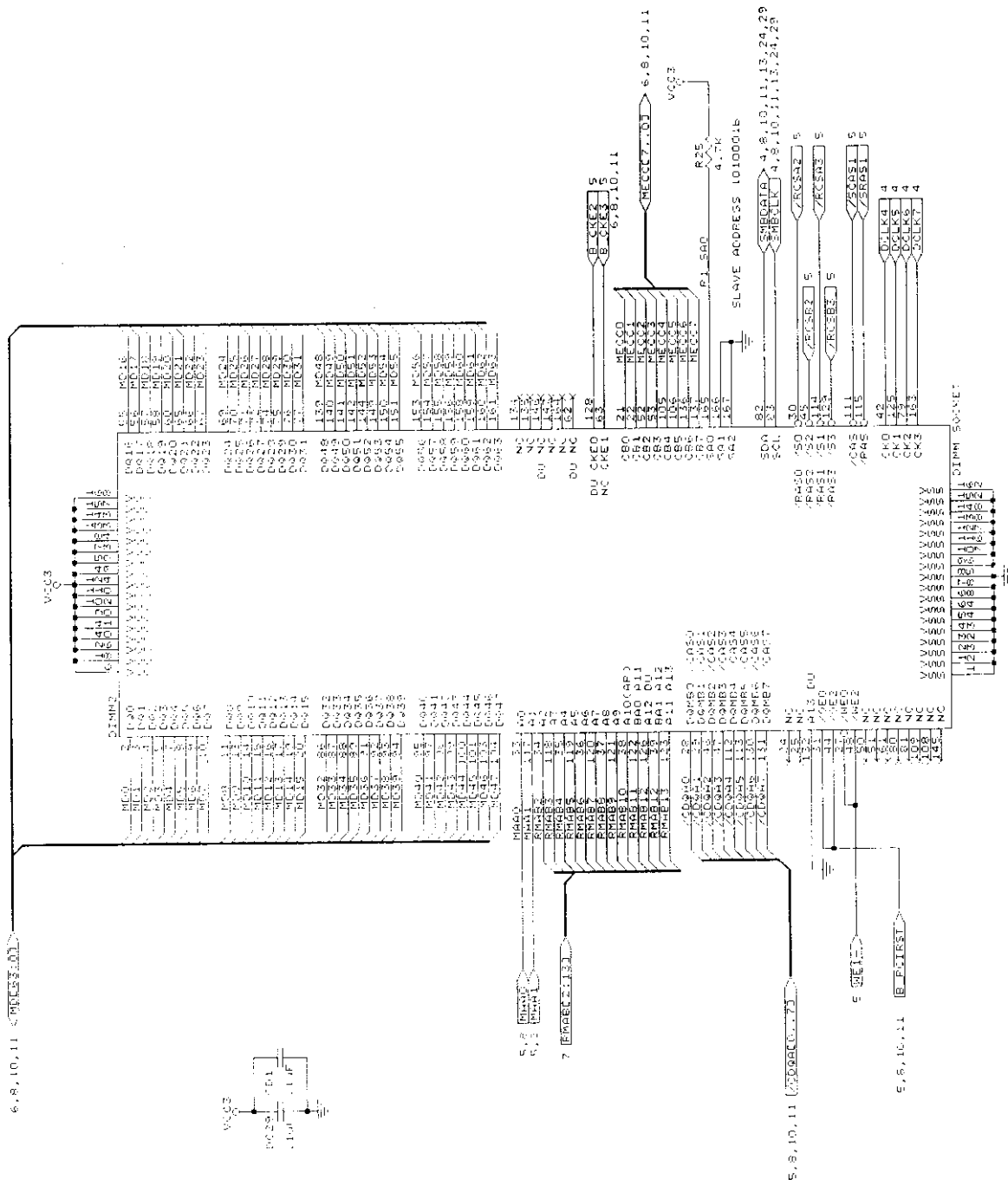
8242L7\_B  
 Size: 11.0 x 16.0  
 Document Number: FRM-00761E1 DTK-A7X  
 B  
 Date: October 23, 1997 Sheet 3 of 22

8242L7\_B  
 Size: 11.0 x 16.0  
 Document Number: FRM-00761E1 DTK-A7X  
 B  
 Date: October 23, 1997 Sheet 3 of 22





# DIMM CONNECTOR 1

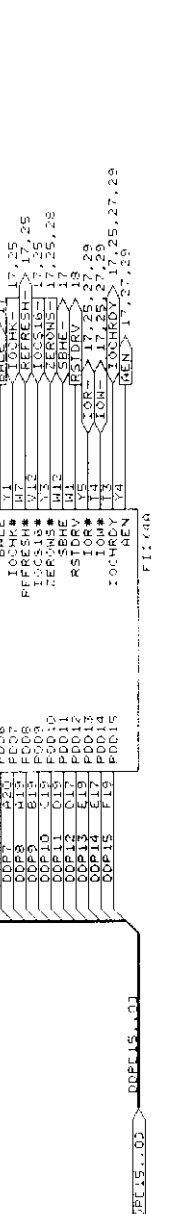
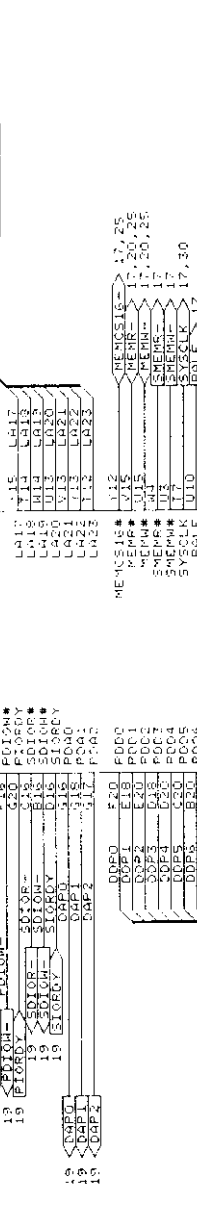
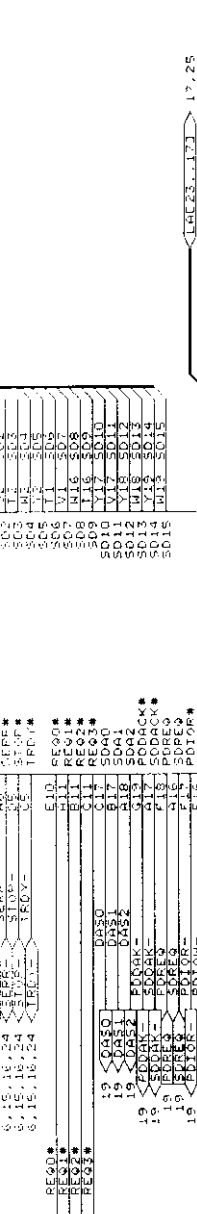
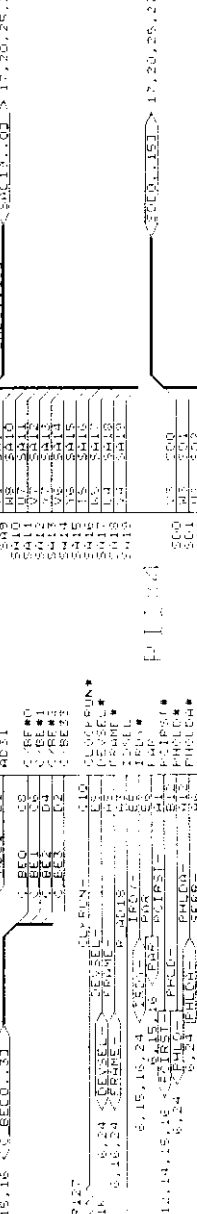
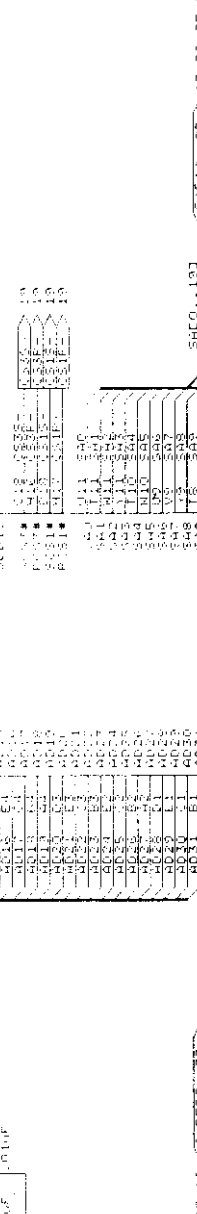
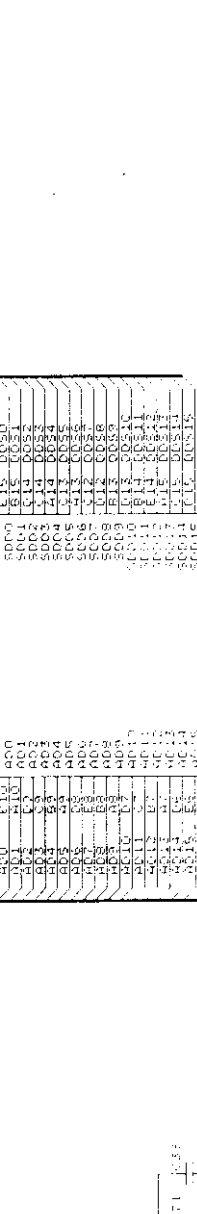






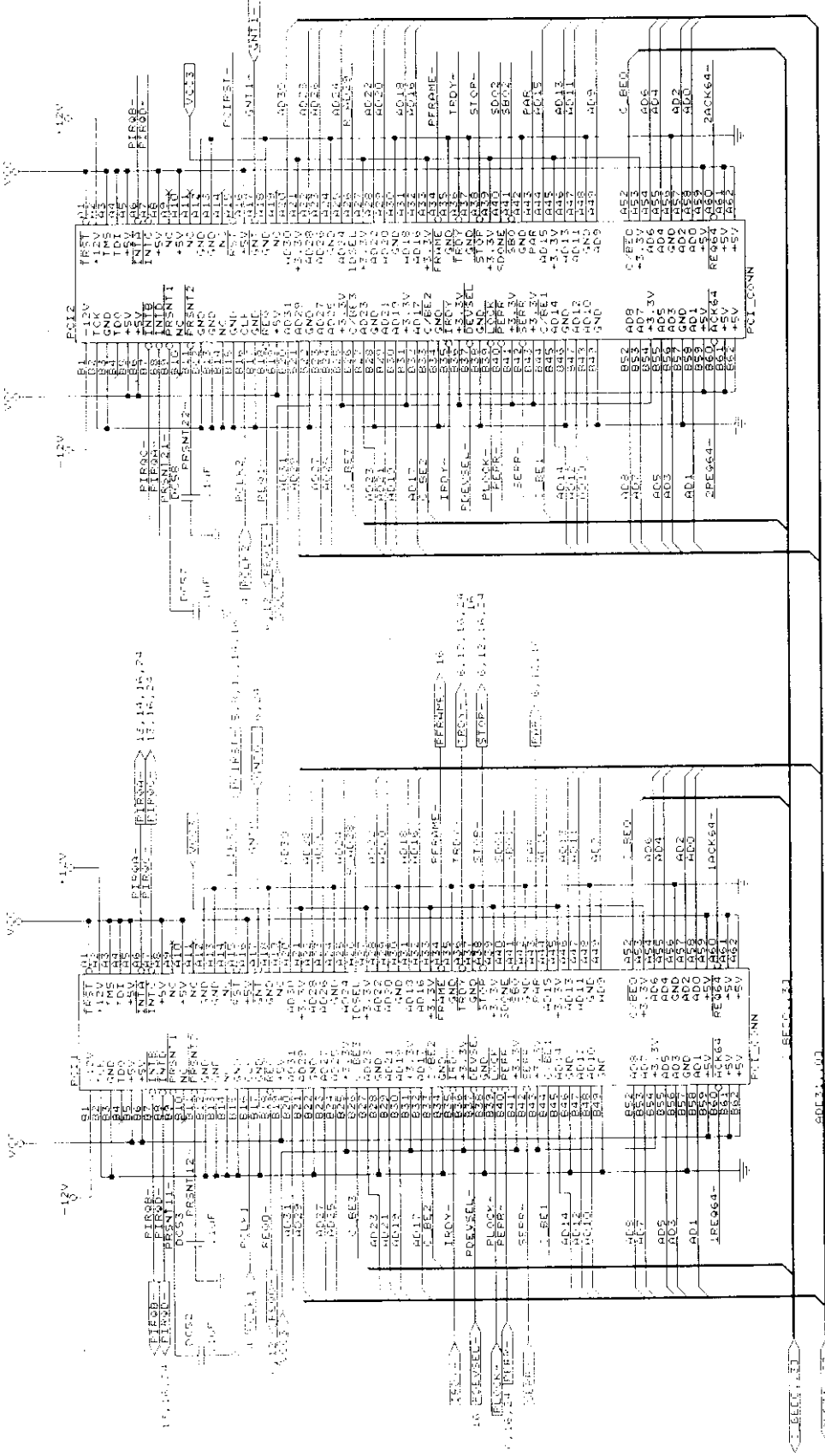


5.15.16 <R03L100> 19 D05L15..03



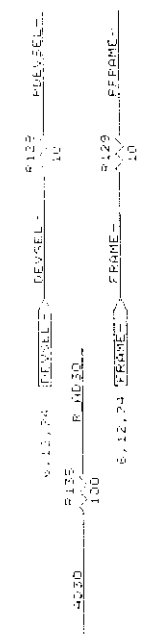
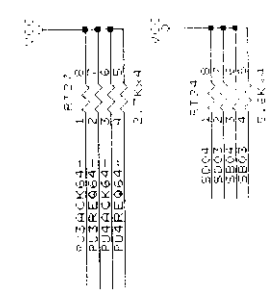
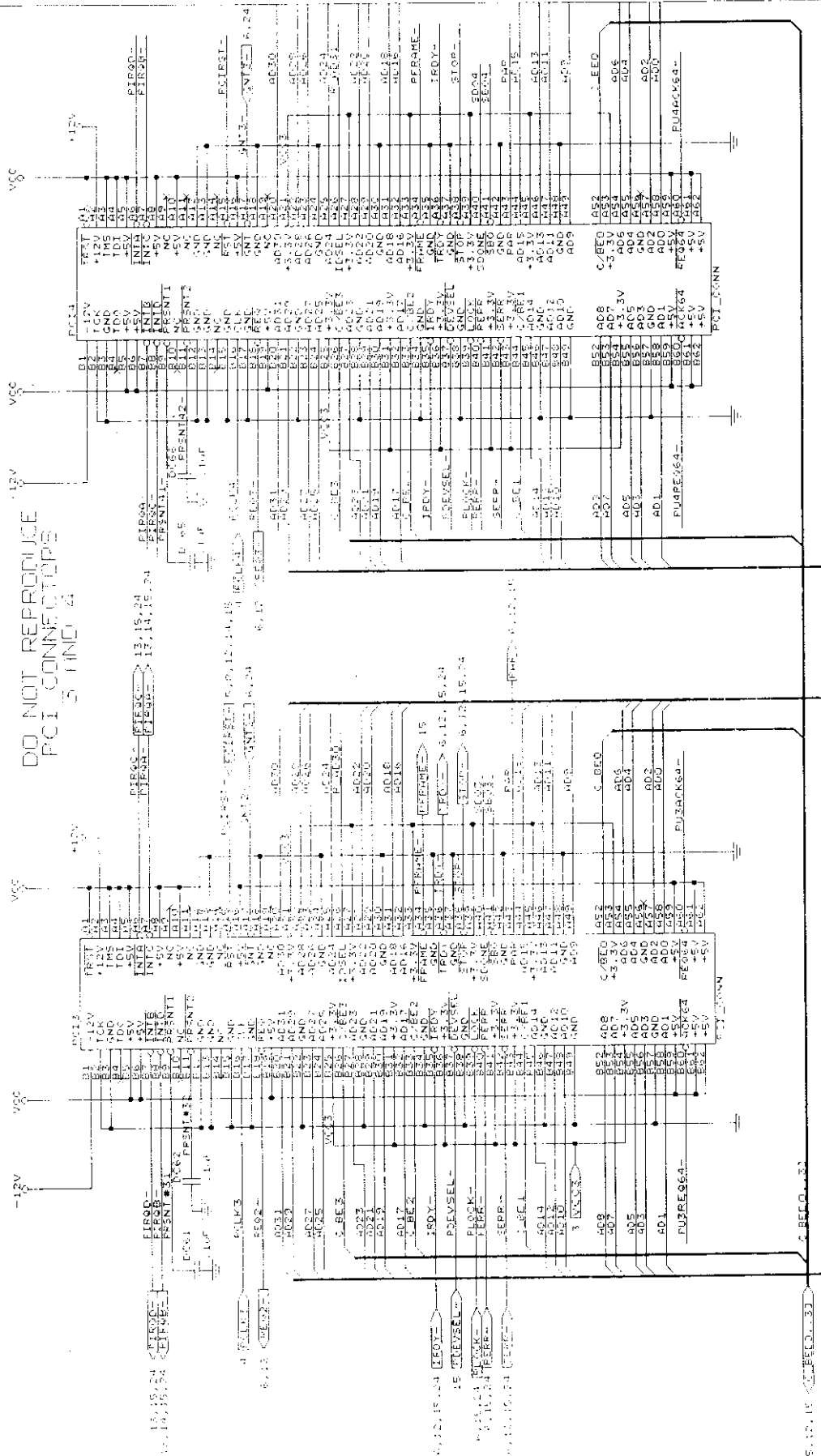






PCI SLOTS (1 & 2)  
 REV  
 Size Document Number  
 B PRM-00761 OTM-RTX  
 Date: Oct 27, 1997 Sheet 15 of 23

DO NOT REPRODUCE  
PCI CONNECTORS  
5 AND 4

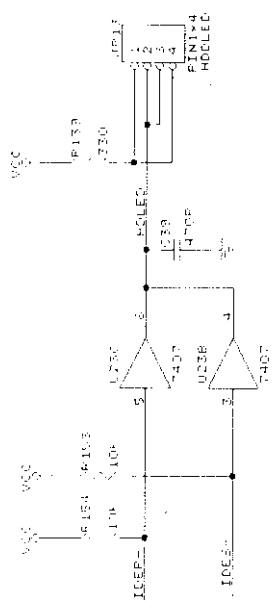
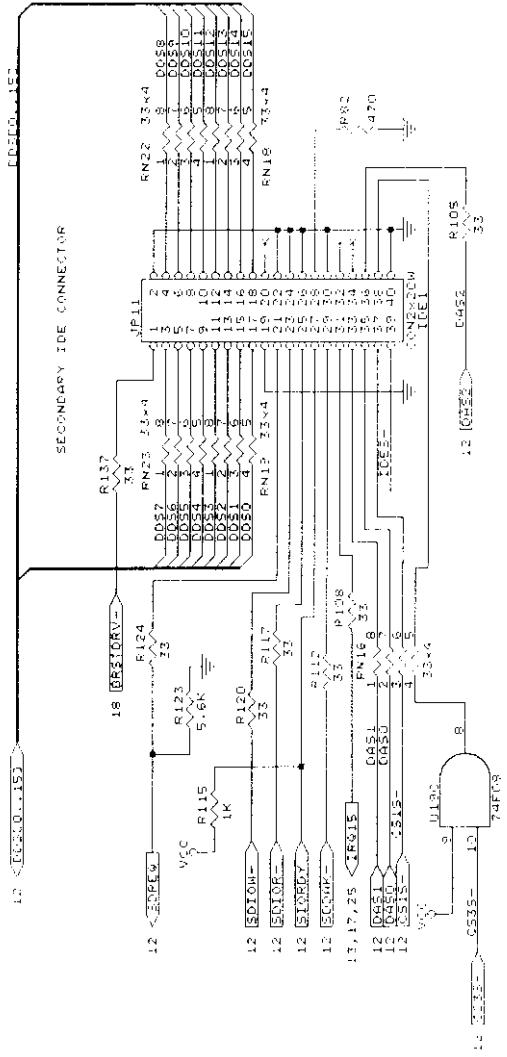
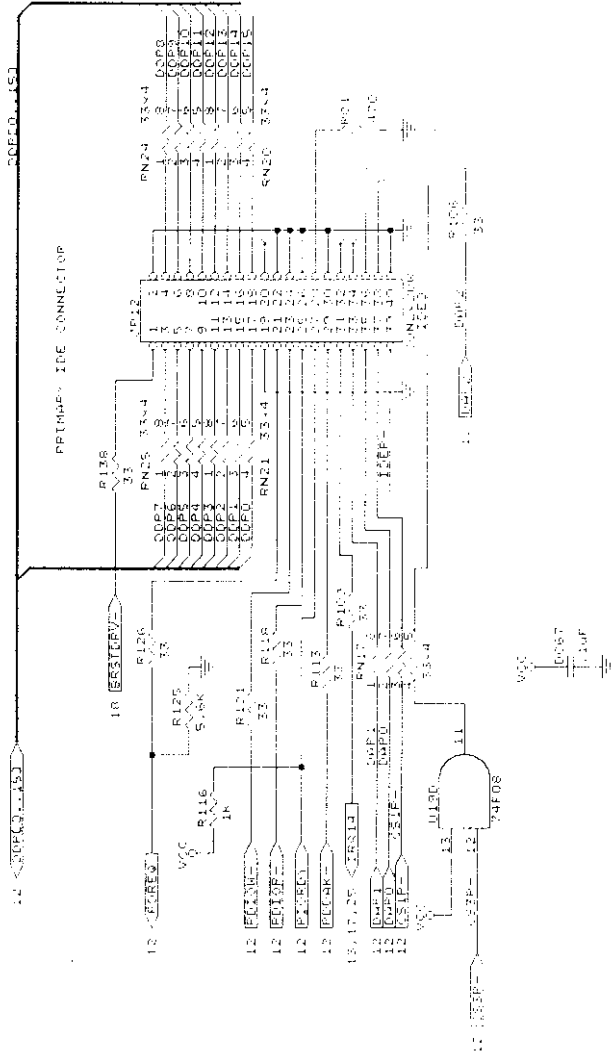


PCI SLOTS (3 & 4)  
Size/Document Number  
B PRM-00761E1 DTK-ATX  
Date: October 23, 1997 Sheet 16 of 23

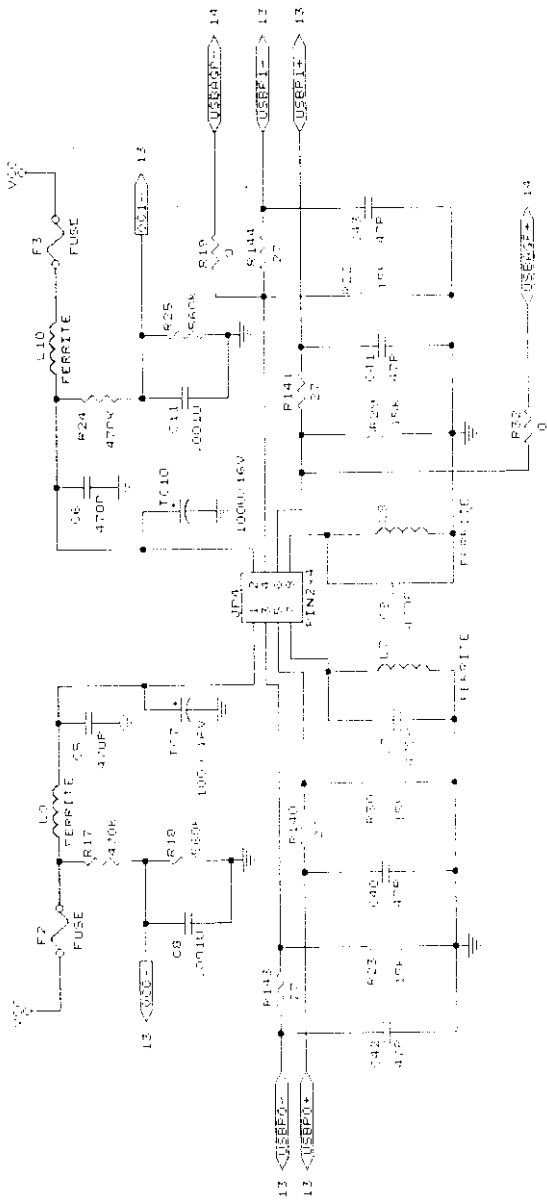






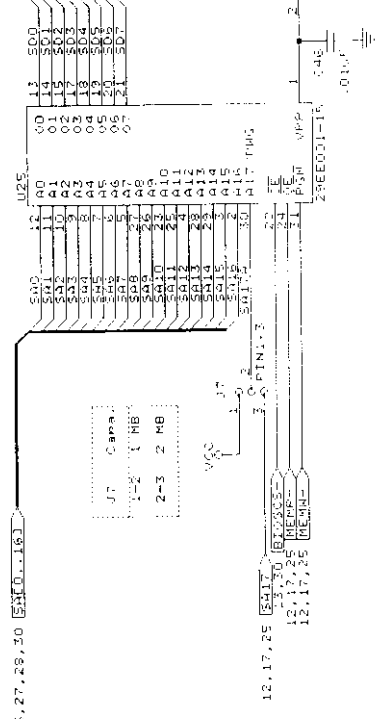


# IDE CONNECTORS



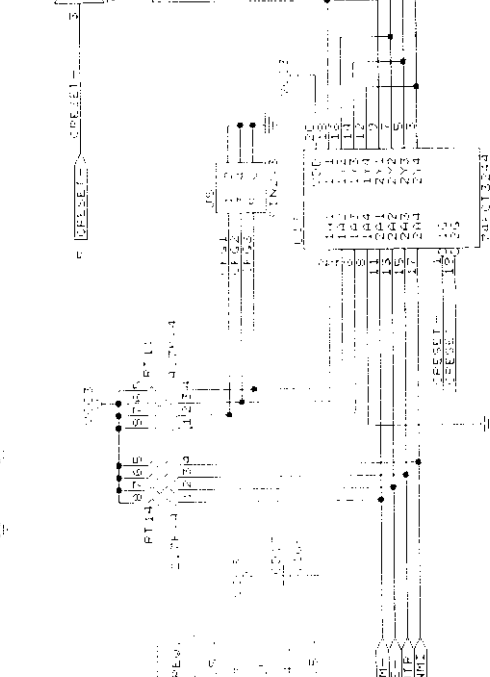
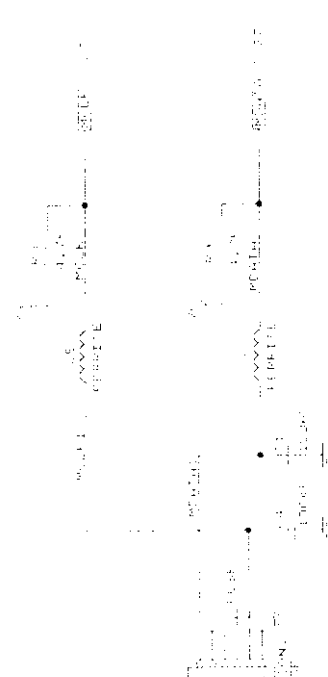
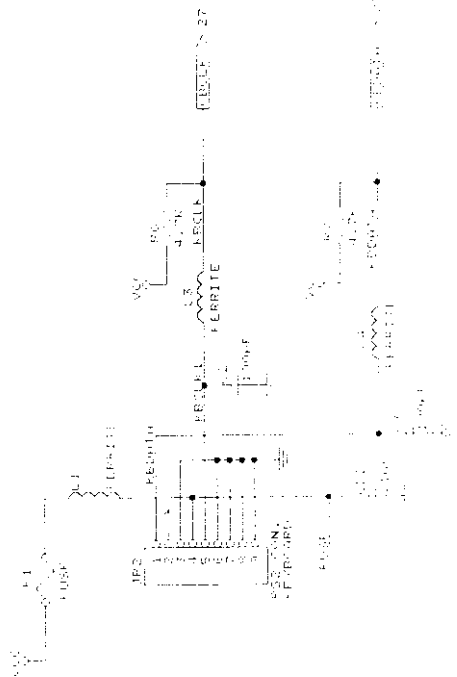
12,17,25,27,29,30 (S10..18) 12,17,25,27,29,30

MADE	JB
SST, Winbond	1-2
Intel, MXIC	2-3



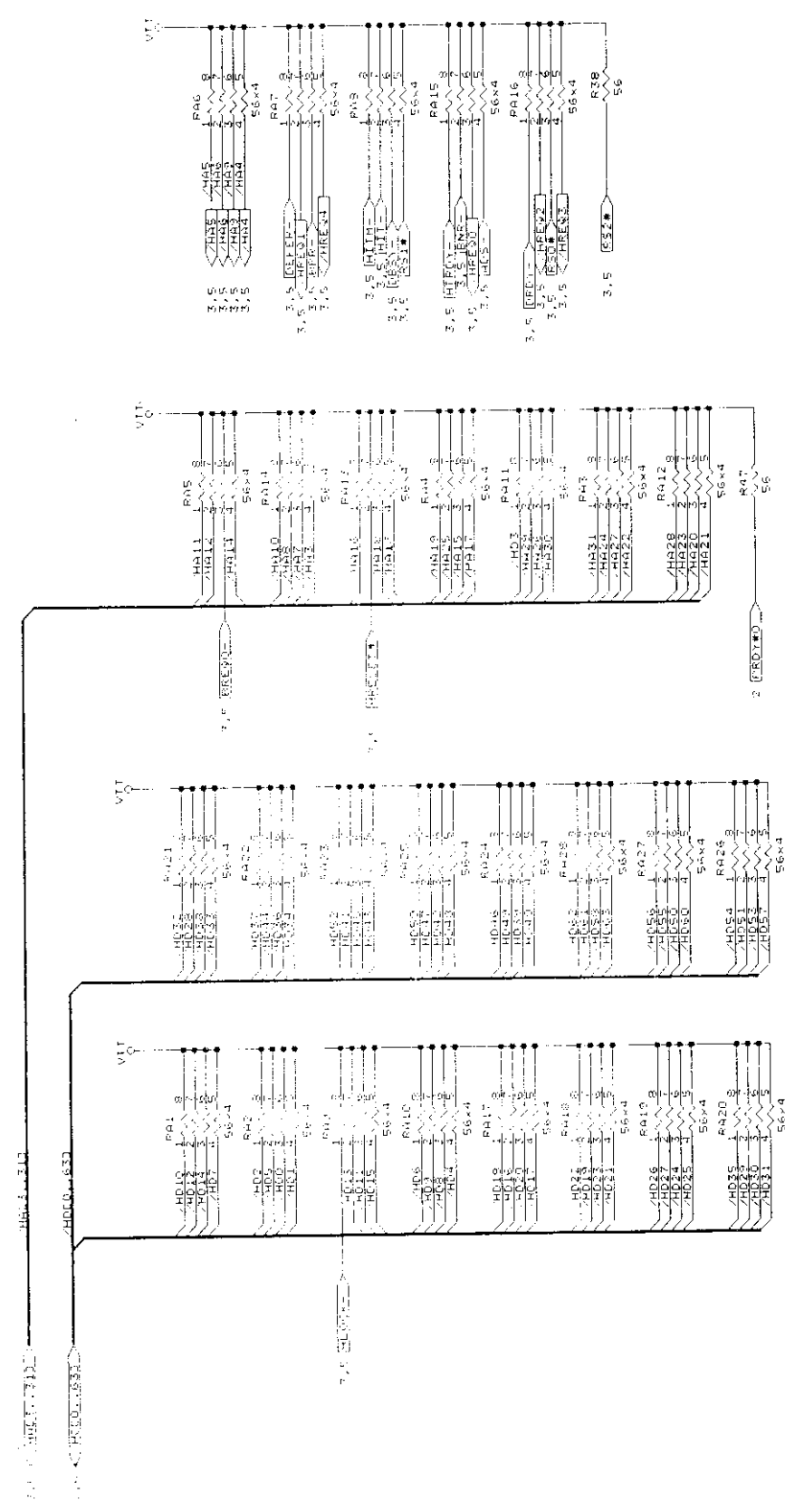
JT Caps	
1-2	1 MB
2-3	2 MB





Processor Core Freq:

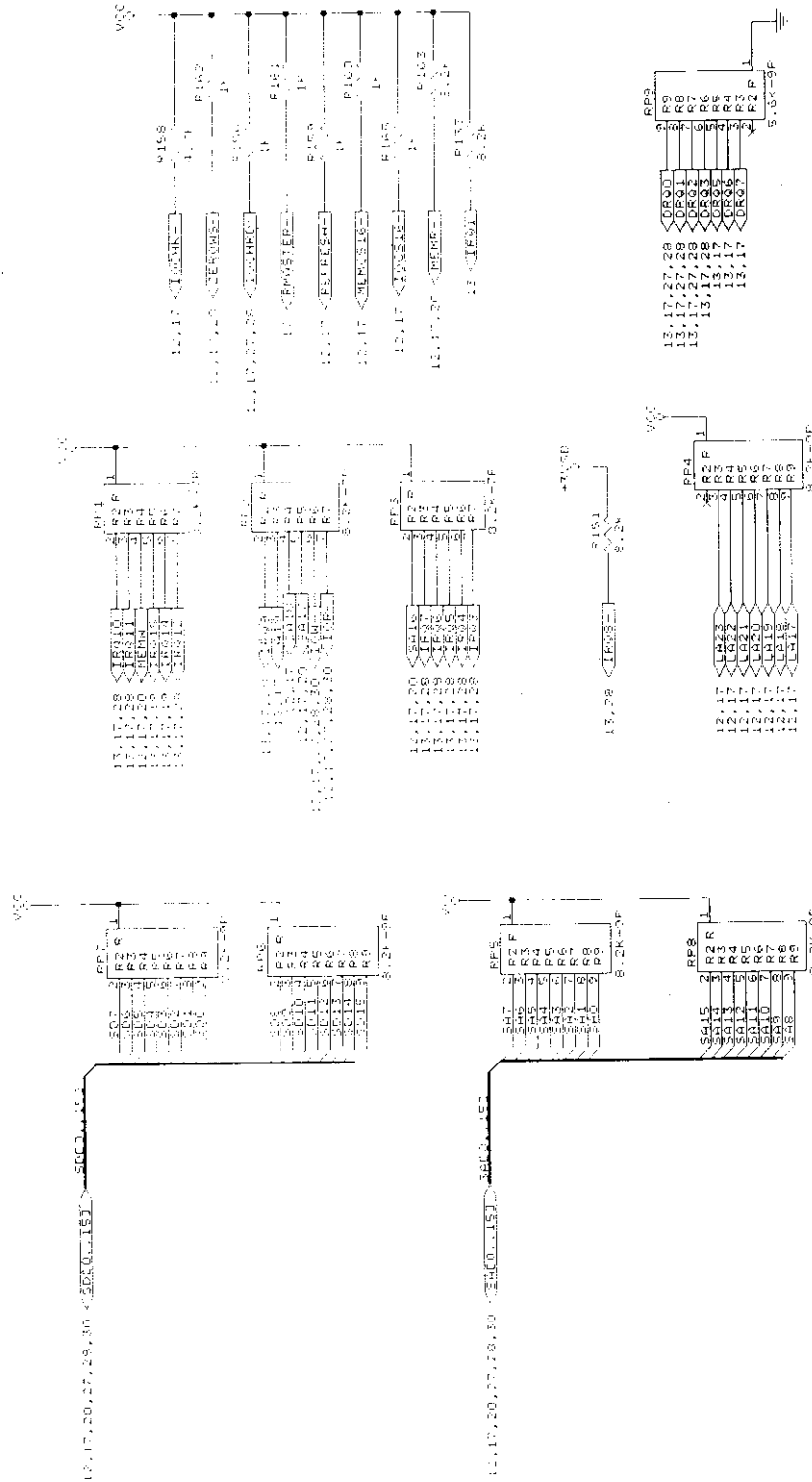
CF53	CF52	CF51	CF50	CF50
ON	ON	OFF	ON	ON
ON	OFF	ON	ON	ON
ON	OFF	ON	ON	ON
ON	OFF	ON	ON	ON
ON	OFF	ON	ON	ON



NOTE : VTT = TERMINATION VOLTAGE



154 015 PULL UPS



REV	PULL UPS & FULL DOWNS
Size	Document Number
B	PRM-00761E1 DTK-MTK
DATS: 01-05-97, 23, 1997	Revset
	25 of 25







To insure maximum reliability in EPP mode, the termination circuits shown below are recommended. Place all termination circuits close to the connector to avoid LPI.

