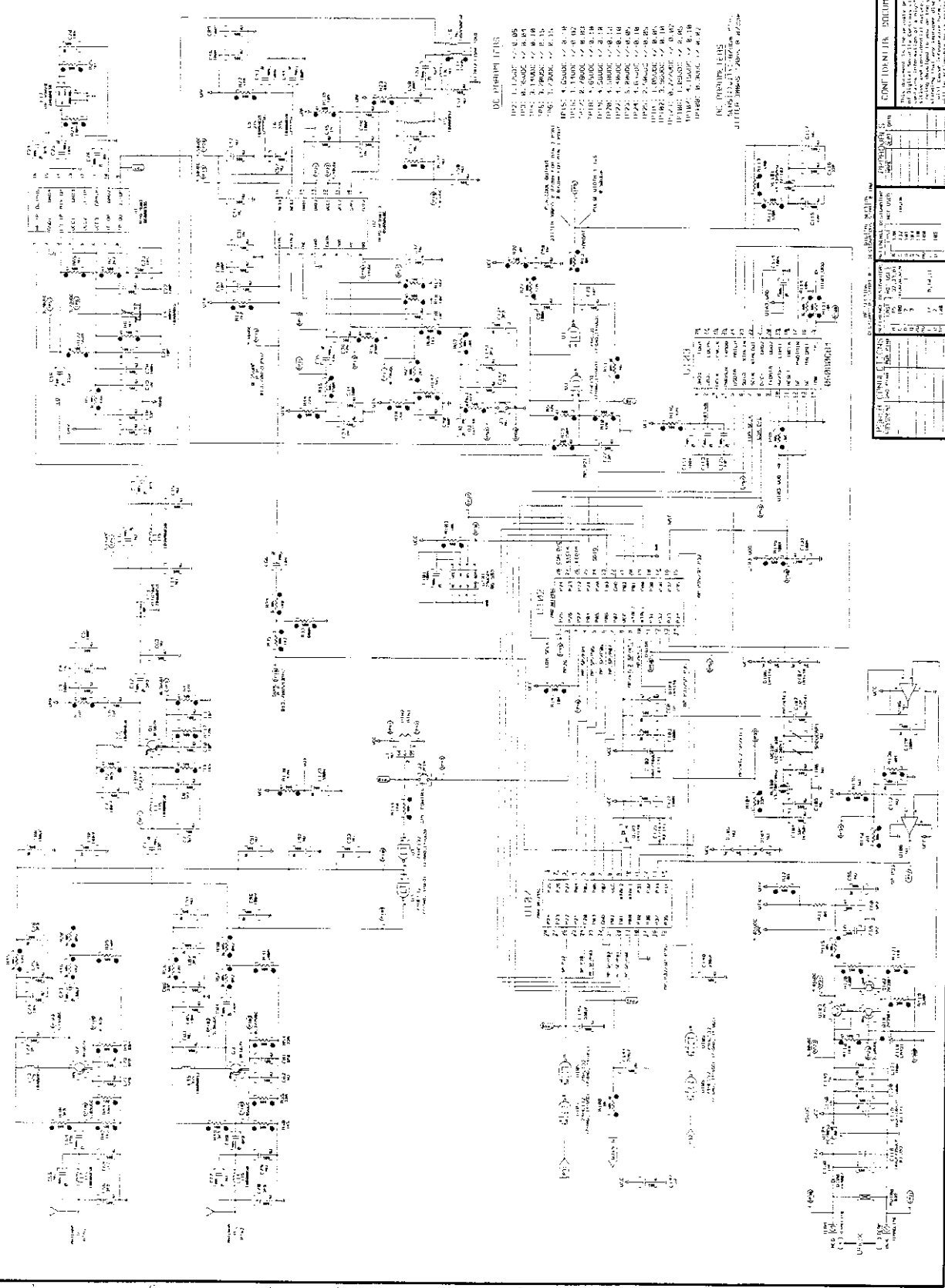




**REVISIONS**

NO.	DATE	DESCRIPTION
1	10/1/58	ISSUED FOR CONSTRUCTION
2	10/15/58	REVISIONS TO MEET COMMENTS
3	10/20/58	REVISIONS TO MEET COMMENTS
4	10/25/58	REVISIONS TO MEET COMMENTS
5	11/5/58	REVISIONS TO MEET COMMENTS
6	11/15/58	REVISIONS TO MEET COMMENTS
7	11/25/58	REVISIONS TO MEET COMMENTS
8	12/5/58	REVISIONS TO MEET COMMENTS
9	12/15/58	REVISIONS TO MEET COMMENTS
10	12/25/58	REVISIONS TO MEET COMMENTS
11	1/5/59	REVISIONS TO MEET COMMENTS
12	1/15/59	REVISIONS TO MEET COMMENTS
13	1/25/59	REVISIONS TO MEET COMMENTS
14	2/5/59	REVISIONS TO MEET COMMENTS
15	2/15/59	REVISIONS TO MEET COMMENTS
16	2/25/59	REVISIONS TO MEET COMMENTS
17	3/5/59	REVISIONS TO MEET COMMENTS
18	3/15/59	REVISIONS TO MEET COMMENTS
19	3/25/59	REVISIONS TO MEET COMMENTS
20	4/5/59	REVISIONS TO MEET COMMENTS
21	4/15/59	REVISIONS TO MEET COMMENTS
22	4/25/59	REVISIONS TO MEET COMMENTS
23	5/5/59	REVISIONS TO MEET COMMENTS
24	5/15/59	REVISIONS TO MEET COMMENTS
25	5/25/59	REVISIONS TO MEET COMMENTS
26	6/5/59	REVISIONS TO MEET COMMENTS
27	6/15/59	REVISIONS TO MEET COMMENTS
28	6/25/59	REVISIONS TO MEET COMMENTS
29	7/5/59	REVISIONS TO MEET COMMENTS
30	7/15/59	REVISIONS TO MEET COMMENTS
31	7/25/59	REVISIONS TO MEET COMMENTS
32	8/5/59	REVISIONS TO MEET COMMENTS
33	8/15/59	REVISIONS TO MEET COMMENTS
34	8/25/59	REVISIONS TO MEET COMMENTS
35	9/5/59	REVISIONS TO MEET COMMENTS
36	9/15/59	REVISIONS TO MEET COMMENTS
37	9/25/59	REVISIONS TO MEET COMMENTS
38	10/5/59	REVISIONS TO MEET COMMENTS
39	10/15/59	REVISIONS TO MEET COMMENTS
40	10/25/59	REVISIONS TO MEET COMMENTS
41	11/5/59	REVISIONS TO MEET COMMENTS
42	11/15/59	REVISIONS TO MEET COMMENTS
43	11/25/59	REVISIONS TO MEET COMMENTS
44	12/5/59	REVISIONS TO MEET COMMENTS
45	12/15/59	REVISIONS TO MEET COMMENTS
46	12/25/59	REVISIONS TO MEET COMMENTS
47	1/5/60	REVISIONS TO MEET COMMENTS
48	1/15/60	REVISIONS TO MEET COMMENTS
49	1/25/60	REVISIONS TO MEET COMMENTS
50	2/5/60	REVISIONS TO MEET COMMENTS
51	2/15/60	REVISIONS TO MEET COMMENTS
52	2/25/60	REVISIONS TO MEET COMMENTS
53	3/5/60	REVISIONS TO MEET COMMENTS
54	3/15/60	REVISIONS TO MEET COMMENTS
55	3/25/60	REVISIONS TO MEET COMMENTS
56	4/5/60	REVISIONS TO MEET COMMENTS
57	4/15/60	REVISIONS TO MEET COMMENTS
58	4/25/60	REVISIONS TO MEET COMMENTS
59	5/5/60	REVISIONS TO MEET COMMENTS
60	5/15/60	REVISIONS TO MEET COMMENTS
61	5/25/60	REVISIONS TO MEET COMMENTS
62	6/5/60	REVISIONS TO MEET COMMENTS
63	6/15/60	REVISIONS TO MEET COMMENTS
64	6/25/60	REVISIONS TO MEET COMMENTS
65	7/5/60	REVISIONS TO MEET COMMENTS
66	7/15/60	REVISIONS TO MEET COMMENTS
67	7/25/60	REVISIONS TO MEET COMMENTS
68	8/5/60	REVISIONS TO MEET COMMENTS
69	8/15/60	REVISIONS TO MEET COMMENTS
70	8/25/60	REVISIONS TO MEET COMMENTS
71	9/5/60	REVISIONS TO MEET COMMENTS
72	9/15/60	REVISIONS TO MEET COMMENTS
73	9/25/60	REVISIONS TO MEET COMMENTS
74	10/5/60	REVISIONS TO MEET COMMENTS
75	10/15/60	REVISIONS TO MEET COMMENTS
76	10/25/60	REVISIONS TO MEET COMMENTS
77	11/5/60	REVISIONS TO MEET COMMENTS
78	11/15/60	REVISIONS TO MEET COMMENTS
79	11/25/60	REVISIONS TO MEET COMMENTS
80	12/5/60	REVISIONS TO MEET COMMENTS
81	12/15/60	REVISIONS TO MEET COMMENTS
82	12/25/60	REVISIONS TO MEET COMMENTS
83	1/5/61	REVISIONS TO MEET COMMENTS
84	1/15/61	REVISIONS TO MEET COMMENTS
85	1/25/61	REVISIONS TO MEET COMMENTS
86	2/5/61	REVISIONS TO MEET COMMENTS
87	2/15/61	REVISIONS TO MEET COMMENTS
88	2/25/61	REVISIONS TO MEET COMMENTS
89	3/5/61	REVISIONS TO MEET COMMENTS
90	3/15/61	REVISIONS TO MEET COMMENTS
91	3/25/61	REVISIONS TO MEET COMMENTS
92	4/5/61	REVISIONS TO MEET COMMENTS
93	4/15/61	REVISIONS TO MEET COMMENTS
94	4/25/61	REVISIONS TO MEET COMMENTS
95	5/5/61	REVISIONS TO MEET COMMENTS
96	5/15/61	REVISIONS TO MEET COMMENTS
97	5/25/61	REVISIONS TO MEET COMMENTS
98	6/5/61	REVISIONS TO MEET COMMENTS
99	6/15/61	REVISIONS TO MEET COMMENTS
100	6/25/61	REVISIONS TO MEET COMMENTS



**DC BIPOLAR TRANSISTORS**

102: 1.5V, 100mA, 100Ω  
 103: 1.5V, 100mA, 100Ω  
 104: 1.5V, 100mA, 100Ω  
 105: 1.5V, 100mA, 100Ω  
 106: 1.5V, 100mA, 100Ω  
 107: 1.5V, 100mA, 100Ω  
 108: 1.5V, 100mA, 100Ω  
 109: 1.5V, 100mA, 100Ω  
 110: 1.5V, 100mA, 100Ω  
 111: 1.5V, 100mA, 100Ω  
 112: 1.5V, 100mA, 100Ω  
 113: 1.5V, 100mA, 100Ω  
 114: 1.5V, 100mA, 100Ω  
 115: 1.5V, 100mA, 100Ω  
 116: 1.5V, 100mA, 100Ω  
 117: 1.5V, 100mA, 100Ω  
 118: 1.5V, 100mA, 100Ω  
 119: 1.5V, 100mA, 100Ω  
 120: 1.5V, 100mA, 100Ω

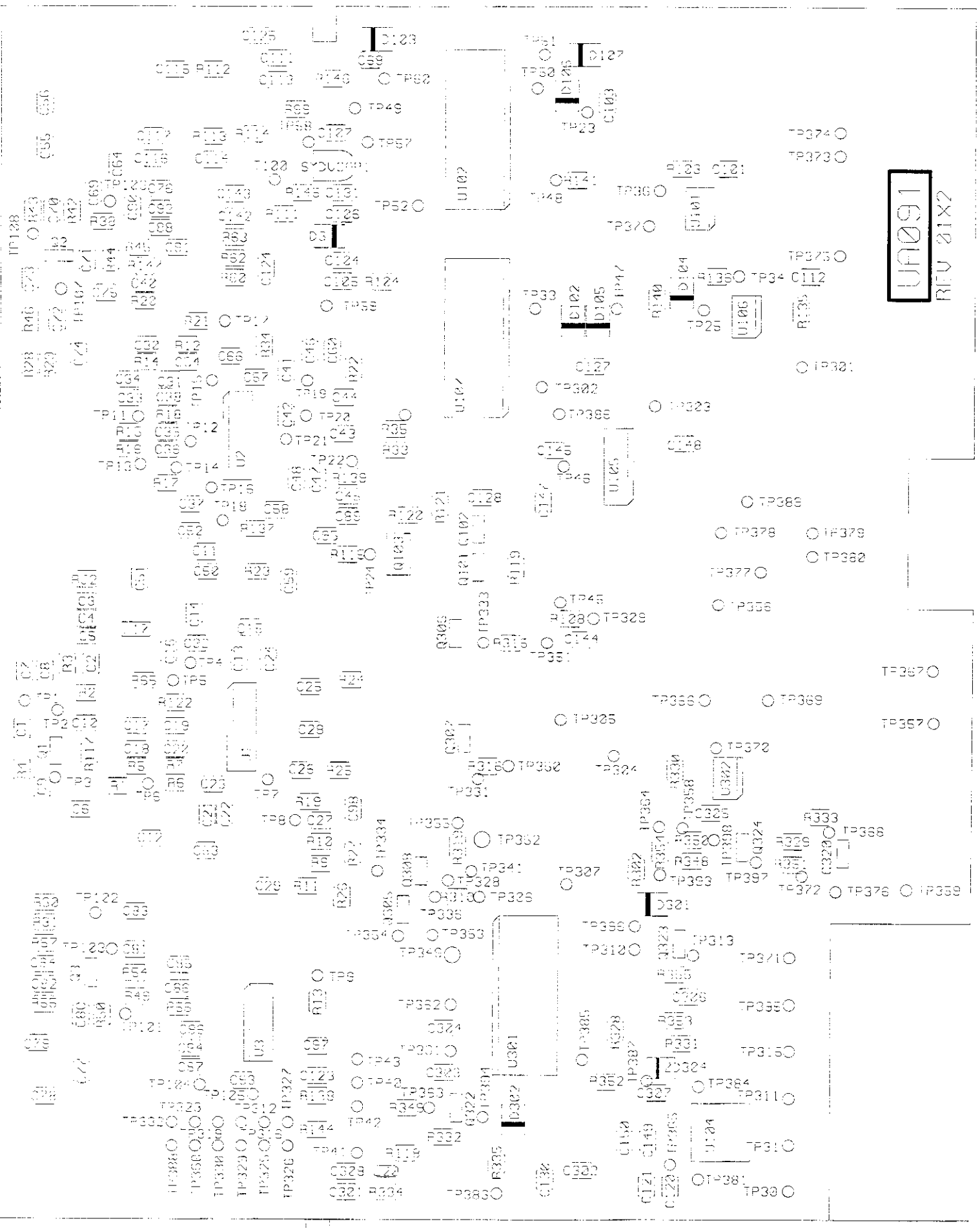
**DC BIPOLAR TRANSISTORS**

121: 1.5V, 100mA, 100Ω  
 122: 1.5V, 100mA, 100Ω  
 123: 1.5V, 100mA, 100Ω  
 124: 1.5V, 100mA, 100Ω  
 125: 1.5V, 100mA, 100Ω  
 126: 1.5V, 100mA, 100Ω  
 127: 1.5V, 100mA, 100Ω  
 128: 1.5V, 100mA, 100Ω  
 129: 1.5V, 100mA, 100Ω  
 130: 1.5V, 100mA, 100Ω

**APPROVALS**

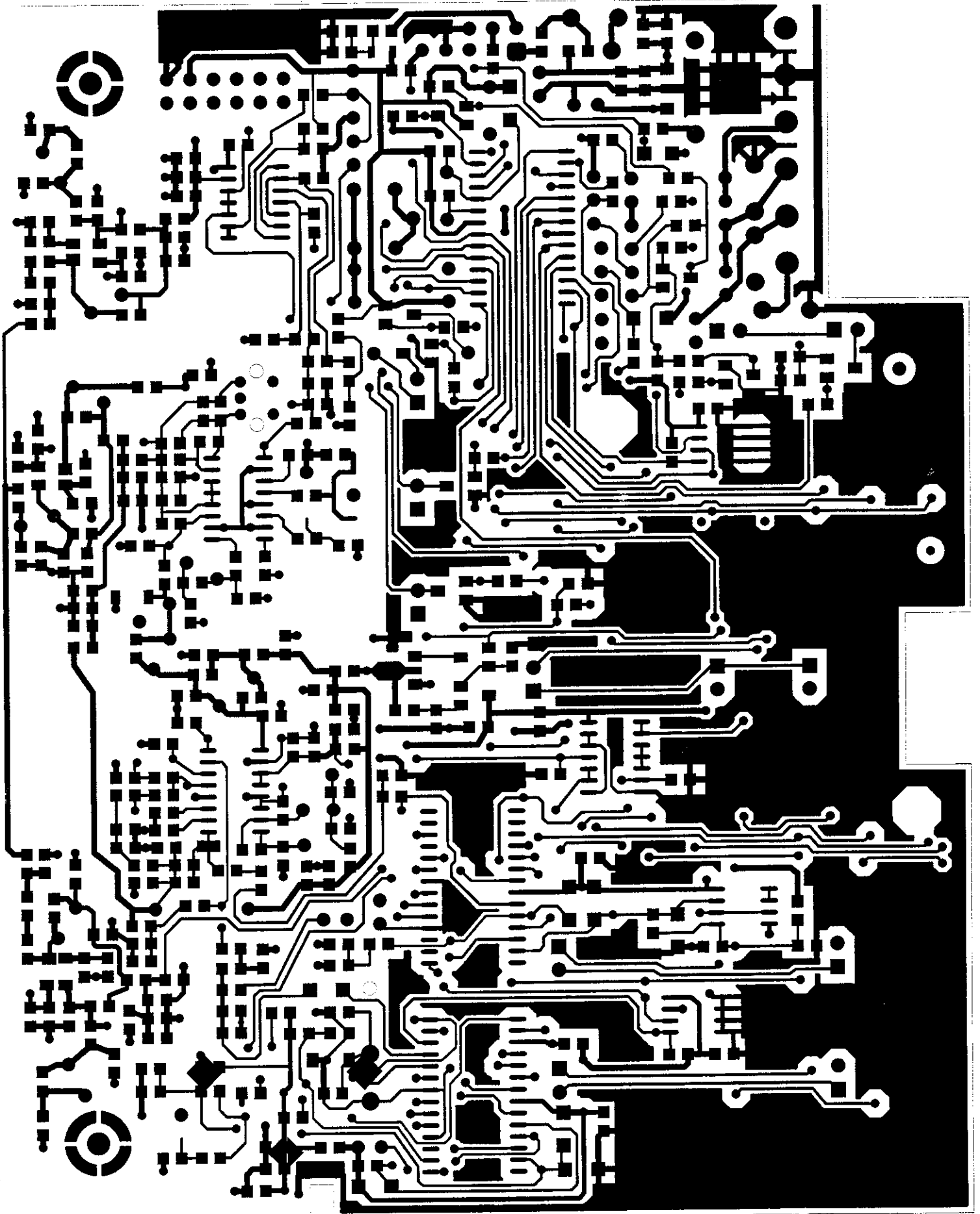
NO.	DATE	NAME	POSITION
1	10/1/58	...	...
2	10/15/58	...	...
3	10/20/58	...	...
4	10/25/58	...	...
5	11/5/58	...	...
6	11/15/58	...	...
7	11/25/58	...	...
8	12/5/58	...	...
9	12/15/58	...	...
10	12/25/58	...	...
11	1/5/59	...	...
12	1/15/59	...	...
13	1/25/59	...	...
14	2/5/59	...	...
15	2/15/59	...	...
16	2/25/59	...	...
17	3/5/59	...	...
18	3/15/59	...	...
19	3/25/59	...	...
20	4/5/59	...	...
21	4/15/59	...	...
22	4/25/59	...	...
23	5/5/59	...	...
24	5/15/59	...	...
25	5/25/59	...	...
26	6/5/59	...	...
27	6/15/59	...	...
28	6/25/59	...	...
29	7/5/59	...	...
30	7/15/59	...	...
31	7/25/59	...	...
32	8/5/59	...	...
33	8/15/59	...	...
34	8/25/59	...	...
35	9/5/59	...	...
36	9/15/59	...	...
37	9/25/59	...	...
38	10/5/59	...	...
39	10/15/59	...	...
40	10/25/59	...	...
41	11/5/59	...	...
42	11/15/59	...	...
43	11/25/59	...	...
44	12/5/59	...	...
45	12/15/59	...	...
46	12/25/59	...	...
47	1/5/60	...	...
48	1/15/60	...	...
49	1/25/60	...	...
50	2/5/60	...	...
51	2/15/60	...	...
52	2/25/60	...	...
53	3/5/60	...	...
54	3/15/60	...	...
55	3/25/60	...	...
56	4/5/60	...	...
57	4/15/60	...	...
58	4/25/60	...	...
59	5/5/60	...	...
60	5/15/60	...	...
61	5/25/60	...	...
62	6/5/60	...	...
63	6/15/60	...	...
64	6/25/60	...	...
65	7/5/60	...	...
66	7/15/60	...	...
67	7/25/60	...	...
68	8/5/60	...	...
69	8/15/60	...	...
70	8/25/60	...	...
71	9/5/60	...	...
72	9/15/60	...	...
73	9/25/60	...	...
74	10/5/60	...	...
75	10/15/60	...	...
76	10/25/60	...	...
77	11/5/60	...	...
78	11/15/60	...	...
79	11/25/60	...	...
80	12/5/60	...	...
81	12/15/60	...	...
82	12/25/60	...	...
83	1/5/61	...	...
84	1/15/61	...	...
85	1/25/61	...	...
86	2/5/61	...	...
87	2/15/61	...	...
88	2/25/61	...	...
89	3/5/61	...	...
90	3/15/61	...	...
91	3/25/61	...	...
92	4/5/61	...	...
93	4/15/61	...	...
94	4/25/61	...	...
95	5/5/61	...	...
96	5/15/61	...	...
97	5/25/61	...	...
98	6/5/61	...	...
99	6/15/61	...	...
100	6/25/61	...	...





U1091

REV 21X2



FCC ID: F53998S732

