

4

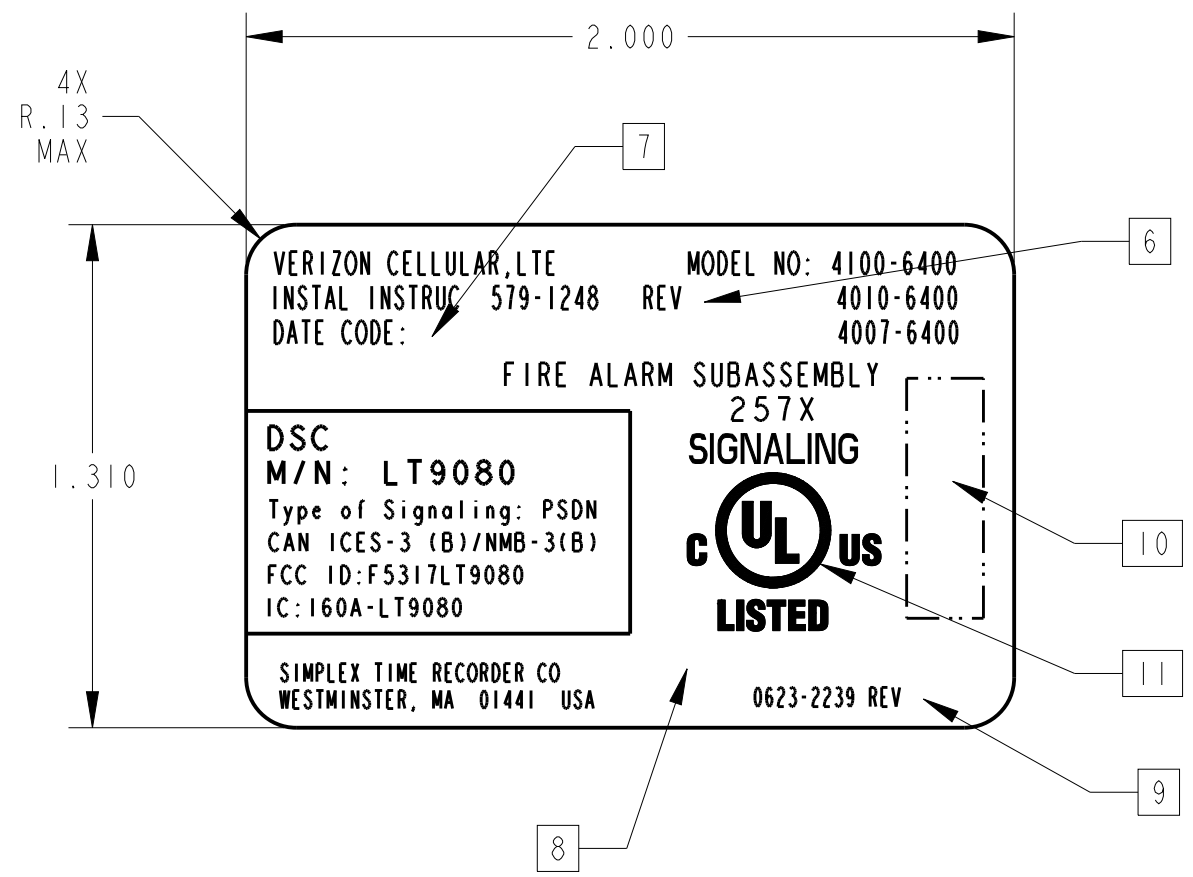
3

2

SIZE	DWG NO.		REV. 3
B	0623-2239		
REV	ECO	DATE	CHK
PRE-RELEASED			
1	MI7-0001		
2	MI7-0022		
3	MI7-0030		

NOTES:

1. MATERIAL: 0570-250 WHITE LABEL STOCK, ADHESIVE BACKED WITH PROTECTIVE LINER.
2. ALL CHARACTERS TO BE BLACK.
3. MARKINGS ON LABEL MUST BE PERMANENT.
4. MINIMUM CHARACTER HEIGHT TO BE .047.
5. PRINTING TO BE CENTRALLY LOCATED ON LABEL WITHIN .06.
6. CURRENT REVISION OF INSTALLATION INSTRUCTIONS SHALL BE ADDED BY MANUFACTURING.
7. DATE CODE FOLLOWED BY A LETTER INDICATING THE PLACE OF MANUFACTURE, TO BE ASSIGNED BY MANUFACTURING PER QAP 1.023.
8. COUNTRY LOCATION AND FACTORY LOCATION STATEMENT SHALL BE ADDED BY MANUFACTURING IN AREA INDICATED. REFER TO DOCUMENT 0900-251 FOR THE LISTING OF COUNTRY AND FACTORY LOCATIONS.
9. MARK LATEST REVISION LETTER WHERE SHOWN.
10. BARCODE LOCATION APPROXIMATELY WHERE SHOWN.
11. AGENCY MARKINGS TO BE ADDED AFTER AGENCY APPROVAL.
12. PICTORIAL SHOWN FOR REFERENCE ONLY, ACCEPTANCE OF LABEL BASED ON MANUFACTURING'S PRINTED LABEL.



A/R	RIBBON, BLACK	0527-360	1
QTY	DESCRIPTION	PART NO.	ITEM

NOTE: THE INFORMATION CONTAINED IN THIS DOCUMENT IS PROPRIETARY TO TYCO/SAFETY PRODUCTS WESTMINSTER AND IS INTENDED FOR INTERNAL TYCO/SAFETY PRODUCTS WESTMINSTER USE ONLY. SUCH INFORMATION MAY BE DISTRIBUTED TO OTHERS ONLY BY WRITTEN PERMISSION OF AN AUTHORIZED TYCO/SAFETY PRODUCTS WESTMINSTER OFFICIAL. THIS RESTRICTION DOES NOT APPLY TO VENDOR PROPRIETARY PARTS THAT MAY BE DISCLOSED IN THIS DOCUMENT.

TOLERANCE: TOLERANCE APPLIES TO ALL DIMENSIONS UNLESS OTHERWISE SPECIFIED. .XXX = ± 0.032 .XX = ± 0.02 .X = ± 0.1 ANG. = ± 0.50	NEXT ASSY 0650-1776	MATERIAL 1	DRAFTSMAN K.MCBRINE 12/JAN/17
	SCALE 2/1		CHECKER DATE
DRAWING CONFORMS TO TYCO/SAFETY PRODUCTS DRAFTING STANDARDS AND THE APPLICABLE ANSI STANDARDS LISTED BELOW: Y14.1-1980 Y14.5M-1982 Y14.2M-1979 Y14.6-1978 Y14.3-1975 Y14.36-1978 ANSI/AWS A2.4-86	HEAT TREAT //	FINISH 2	APPROVED DATE
	PROJECTION 		DO NOT SCALE DRAWING- ALL DIMENSIONS IN INCHES

tyco / Safety Products Westminster
 50 TECHNOLOGY DRIVE, WESTMINSTER, MA. 01441

TITLE MOD LBL, VERIZON CELLULAR

EQUIP 4100, 4010, 4007

SIZE	DWG NO.	SHT	OF	REV. 3
B	0623-2239	1	1	

PRO/E CONTROLLED

MODEL DATABASE NAME:	P6232239	REV. 7
DRAWING DATABASE NAME:	D6232239	REV. 5
FILE PATH:	EXACTECH	

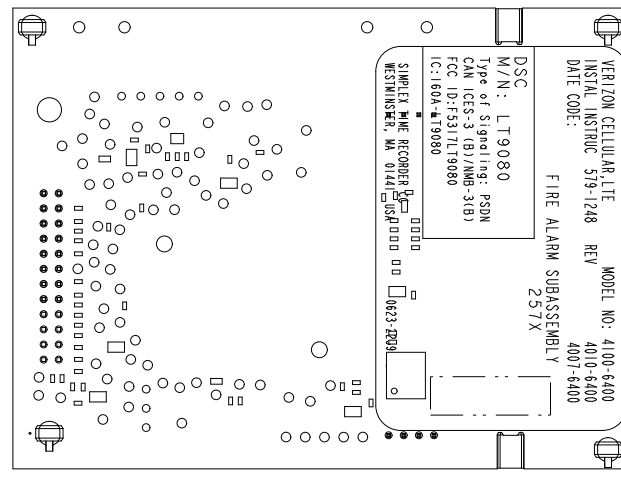
4

3

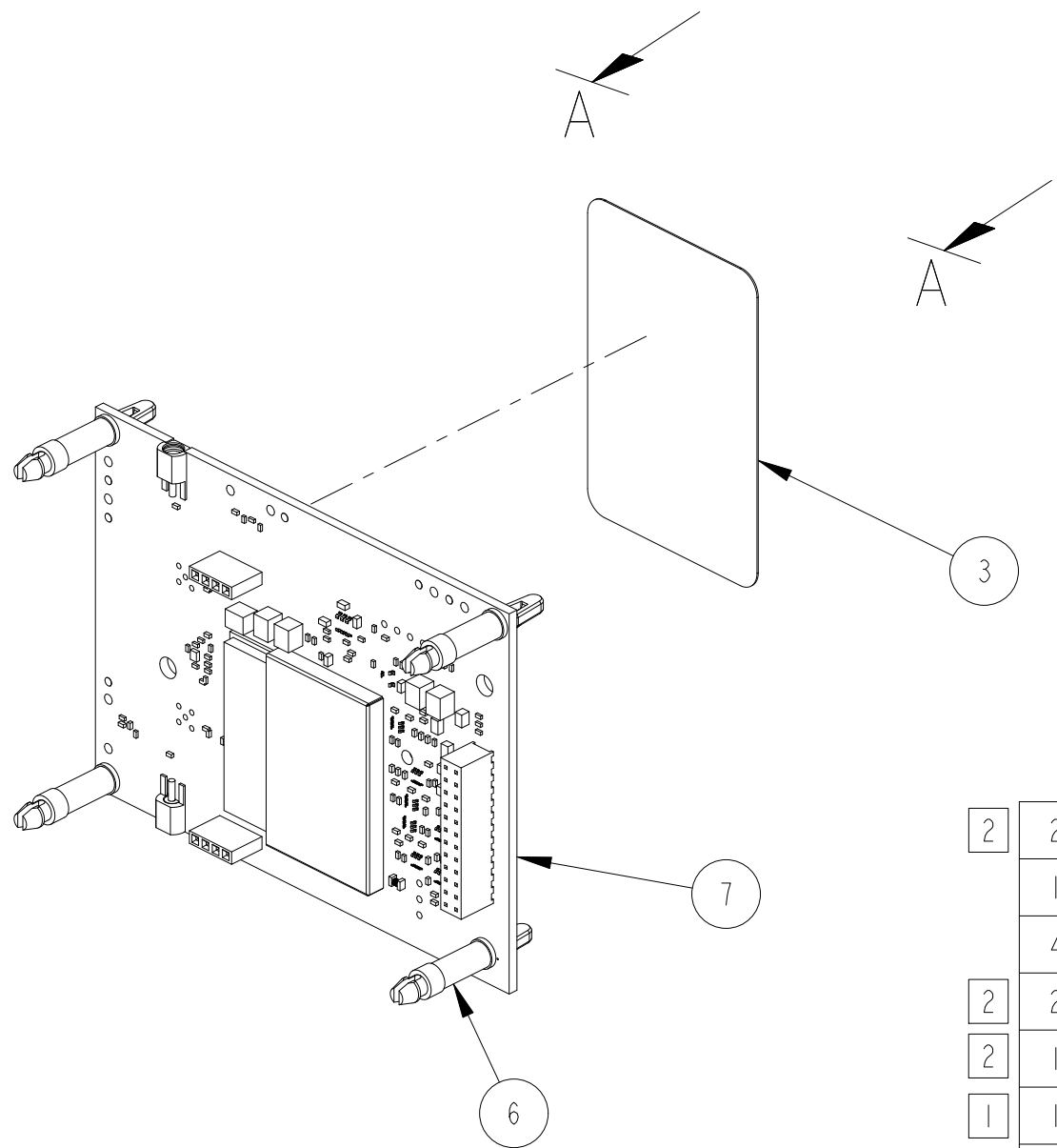
2

1

SIZE	DWG NO.		REV.
B	0650-1776		REV.1
REV	ECO	DATE	CHK
1	MI7-0033		
PRE-RELEASED			



VIEW A-A



NOTES:

- 1. LOCATE LABEL APPROXIMATELY WHERE SHOWN.
- 2. ITEM NOT SHOWN. ITEM TO BE SHIPPED UNASSEMBLED.

QTY	DESCRIPTION	PART NO.	ITEM
2	2 WASHER, FLAT, 9/32, NYLON	0268-083	8
1	1 VERIZON CELL MODULE, PCA	0746-320	7
4	4 STANDOFF, .50LG, SNAP, NYLON	0202-141	6
2	2 SPACER, THRU W/SHLDR, .260DIA	0532-642	5
2	1 PANEL LABEL, CELL MOD, VERIZON	0623-2362	4
1	1 MOD LBL, VERIZON CELLULAR	0623-2239	3
2	2 CBL, RP-SMA BLKHD TO MMCX 36"	0746-323	2
2	2 ANTENNA, 3G/LTE	0746-324	1

NOTE: THE INFORMATION CONTAINED IN THIS DOCUMENT IS PROPRIETARY TO TYCO/SAFETY PRODUCTS WESTMINSTER AND IS INTENDED FOR INTERNAL TYCO/SAFETY PRODUCTS WESTMINSTER USE ONLY. SUCH INFORMATION MAY BE DISTRIBUTED TO OTHERS ONLY BY WRITTEN PERMISSION OF AN AUTHORIZED TYCO/SAFETY PRODUCTS WESTMINSTER OFFICIAL. THIS RESTRICTION DOES NOT APPLY TO VENDOR PROPRIETARY PARTS THAT MAY BE DISCLOSED IN THIS DOCUMENT.

TOLERANCE: TOLERANCE APPLIES TO ALL DIMENSIONS UNLESS OTHERWISE SPECIFIED. .XXX = ± 0.015 .XX = ± 0.02 .X = ± 0.1 ANG. = ± 0.50	NEXT ASSY 0743-2018	MATERIAL N/A	DRAFTSMAN K.MCBRINE 04/APR/17
	SCALE 1/1	FINISH N/A	CHECKER DATE
	HEAT TREAT //		APPROVED DATE
DRAWING CONFORMS TO TYCO/SAFETY PRODUCTS DRAFTING STANDARDS AND THE APPLICABLE ANSI STANDARDS LISTED BELOW: Y14.1-1980 Y14.5M-1982 Y14.2M-1979 Y14.6-1978 Y14.3-1975 Y14.36-1978 ANSI/AWS A2.4-86	PROJECTION 	DO NOT SCALE DRAWING- ALL DIMENSIONS IN INCHES	APPROVED DATE

tyco / Safety Products Westminster
50 TECHNOLOGY DRIVE, WESTMINSTER, MA. 01441

TITLE VERIZON CELL MOD, ASY, PANELS
EQUIP EXACTECH

SIZE	DWG NO.	SHT	REV.
B	0650-1776	1 OF 1	REV.1

PRO/E CONTROLLED

MODEL DATABASE NAME:	A6501776	REV.2
DRAWING DATABASE NAME:	D6501776	REV.1
FILE PATH:	EXACTECH	