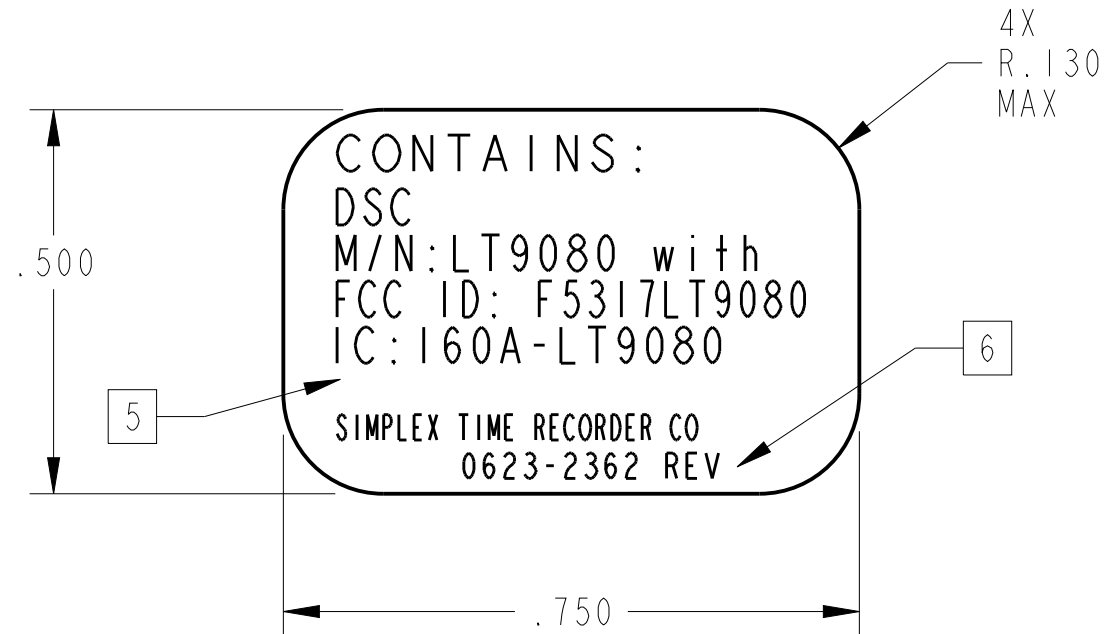


SIZE	DWG NO.		REV.2
B	0623-2362		
REV	ECO	DATE	CHK
PRE-RELEASED			
1	MI7-0022		
2	MI7-0030		



NOTES:

1. MATERIAL: 0570-250 WHITE LABEL STOCK, ADHESIVE BACKED WITH PROTECTIVE LINER.
2. ALL CHARACTERS TO BE BLACK.
3. MARKINGS ON LABEL MUST BE PERMANENT.
4. PRINTING TO BE CENTRALLY LOCATED ON LABEL WITHIN .06.
5. COUNTRY LOCATION AND FACTORY LOCATION STATEMENT SHALL BE ADDED BY MANUFACTURING IN AREA INDICATED. REFER TO DOCUMENT 0900-251 FOR THE LISTING OF COUNTRY AND FACTORY LOCATIONS.
6. MARK LATEST REVISION LETTER WHERE SHOWN.
7. PICTORIAL SHOWN FOR REFERENCE ONLY, ACCEPTANCE OF LABEL BASED ON MANUFACTURING'S PRINTED LABEL.
8. NEXT ASSEMBLY: 0650-1776, 0650-2182

A/R	RIBBON, BLACK	0527-360	1
QTY	DESCRIPTION	PART NO.	ITEM

NOTE: THE INFORMATION CONTAINED IN THIS DOCUMENT IS PROPRIETARY TO TYCO/SAFETY PRODUCTS WESTMINSTER AND IS INTENDED FOR INTERNAL TYCO/SAFETY PRODUCTS WESTMINSTER USE ONLY. SUCH INFORMATION MAY BE DISTRIBUTED TO OTHERS ONLY BY WRITTEN PERMISSION OF AN AUTHORIZED TYCO/SAFETY PRODUCTS WESTMINSTER OFFICIAL. THIS RESTRICTION DOES NOT APPLY TO VENDOR PROPRIETARY PARTS THAT MAY BE DISCLOSED IN THIS DOCUMENT.

TOLERANCE: TOLERANCE APPLIES TO ALL DIMENSIONS UNLESS OTHERWISE SPECIFIED. .XXX = ± 0.032 .XX = ± 0.01 .X = ± 0.1 ANG. = ± 0.50	NEXT ASSY 8	MATERIAL 1	DRAFTSMAN S.VARIEUR 20/MAR/17	 50 TECHNOLOGY DRIVE, WESTMINSTER, MA. 01441
	SCALE 4/1	FINISH 2	CHECKER DATE	
DRAWING CONFORMS TO TYCO/SAFETY PRODUCTS DRAFTING STANDARDS AND THE APPLICABLE ANSI STANDARDS LISTED BELOW: Y14.1-1980 Y14.5M-1982 Y14.2M-1979 Y14.6-1978 Y14.3-1975 Y14.36-1978 ANSI/AWS A2.4-86	HEAT TREAT //	PROJECTION 	APPROVED DATE	TITLE PNL LBL, CELL MOD, VERIZON
	DO NOT SCALE DRAWING- ALL DIMENSIONS IN INCHES	APPROVED DATE	APPROVED DATE	EQUIP EXACTECH
			SIZE B	DWG NO. 0623-2362
			SHT 1	OF 1
			REV.2	

PRO/E CONTROLLED

MODEL DATABASE NAME:	P6232362	REV.2
DRAWING DATABASE NAME:	D6232362	REV.3
FILE PATH:	EXACTECH	