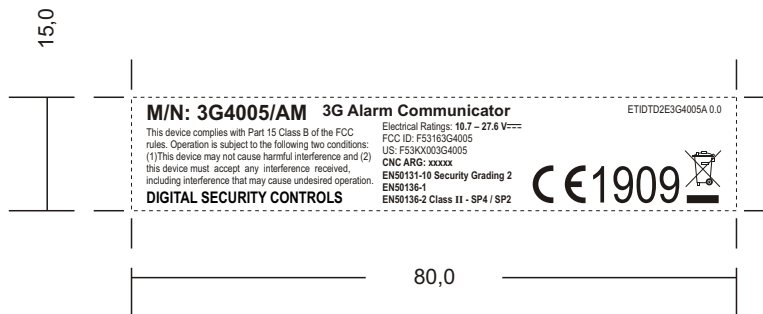
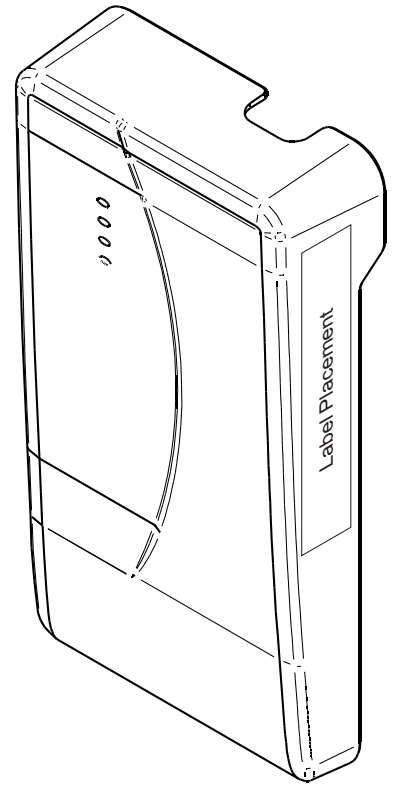
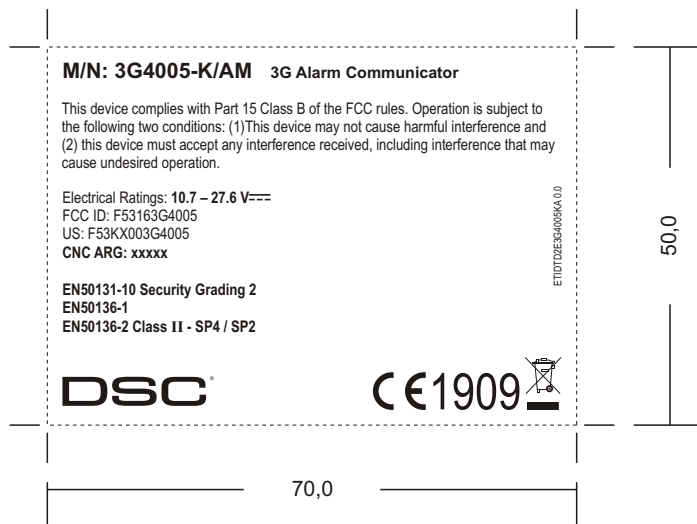
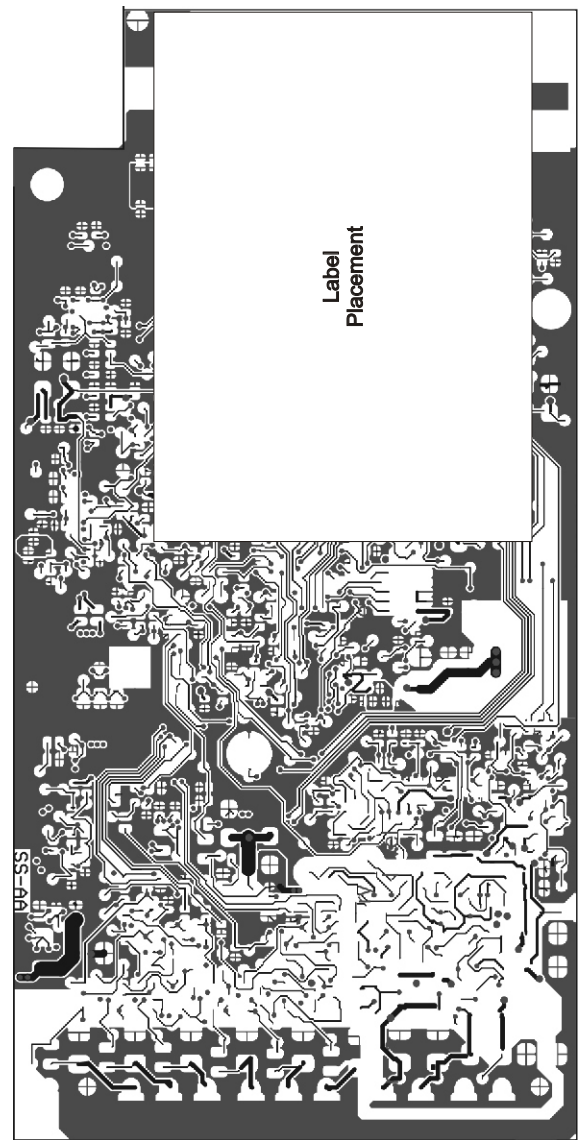


LABEL SPECIFICATIONS	
PRINTING FILE	This file
PRINTING METHOD	1 Color Screen Printing
MATERIAL P/N	N/A
MATERIAL DESCRIP	Clear PVC
ARTWORK	1 color
COLOR NR. 1	■ BLACK
COLOR NR. 2	
COLOR NR. 3	
NOTES	<i>The label must be laminated.</i>



BENTEL SECURITY srl		DESIGNED FOR		DRAFTSMAN Roberto Nunzi		SCALE 1:1	
COD.	ETIDTD2E3G4005A	REV.	0.0	DESCR.	3G4005/AM 82X10 ETICH.DATI DSC	DATE	26/01/2016
FILE	ETIDTD2E3G4005A 0.0	BRAND	DSC	LANG.	none	SOFT.	B5.0
NOTES <i>Unless otherwise specified dimensions are in mm.</i>							SIGN
LEVELS	Label	+ Artwork	+ Dimensions	+ Placement	+	+	+
		+	+	+	+	+	+

LABEL SPECIFICATIONS	
PRINTING FILE	This file
PRINTING METHOD	Digital Print
MATERIAL P/N	N/A
MATERIAL DESCRIP	White Silk Super-Tak Self-Adhesive Paper
ARTWORK	1 color
COLOR NR. 1	■ BLACK
COLOR NR. 2	
COLOR NR. 3	
NOTES	<i>You can paginate the labels or print them as separate items. In this last case, you must add a back slit on the adhesive liner to make easy to separate it from the adhesive.</i>



BENTEL SECURITY srl		DESIGNED FOR		DRAFTSMAN Roberto Nunzi		SCALE 1:1	
COD.	ETIDTD2E3G4005KA	REV.	0.0	DESCR.	3G4005-K/AM ETICHETTA DATI DSC	DATE	25/01/2016
FILE	ETIDTD2E3G4005KA 0.0	BRAND	DSC	LANG.	ENGLISH	SOFT.	CD12
NOTES <i>Unless otherwise specified dimensions are in mm.</i>						SIGN	
LEVELS	Label	+ Artwork	+ Dimensions	+ Placement	+	+	+
		+	+	+	+	+	+