



A Tyco International Company

Digital Security Controls
3301 Langstaff Road
Concord, Ontario Canada L4K 4L2
Tele: 905 760 3000
Toll Free: 888 888 7838
Fax: 905-760-3020

18008559R001 TL260-RS/TL260GS-RS/GS2060-RS FCC/IC Label

February 9, 2011

Colour: Pantone Process Black

Material:

WHITE Durable Semi-gloss Self-adhesive Material
(e.g. PL 38 Q, or equivalent) - on a roll

Lamination: Top lamination (e.g. 1F9, or equivalent)

Adhesive: Permanent adhesive backed with
protective liner (e.g. 60# Semigloss Tire-III / 40#
Liner Code: B37, or equivalent)

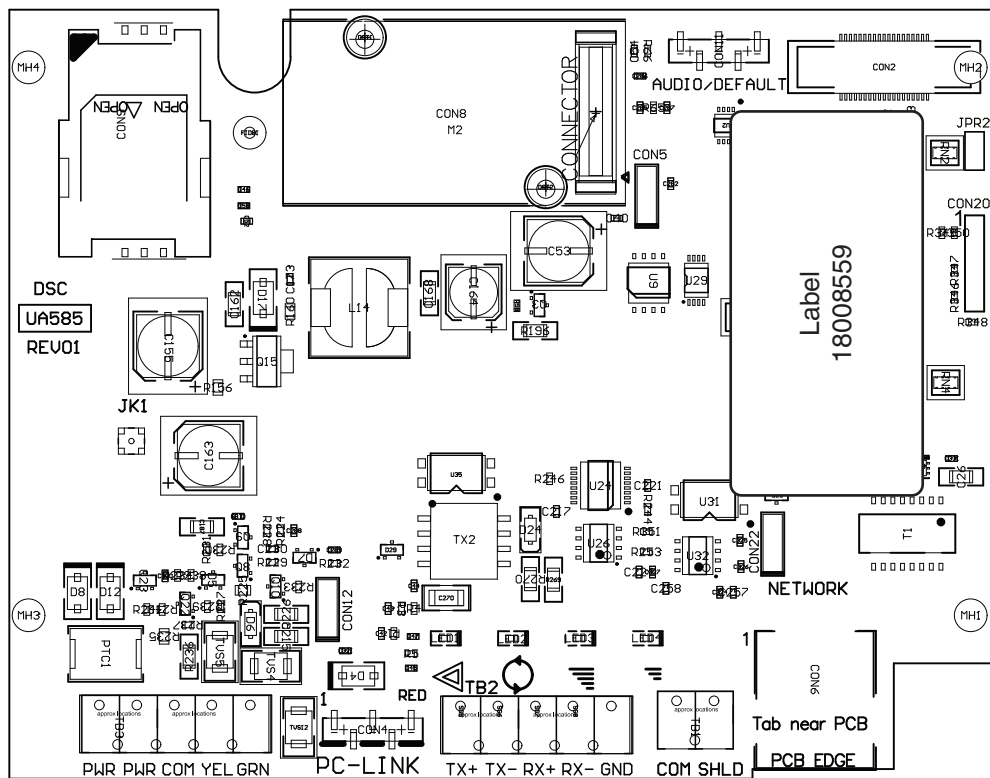
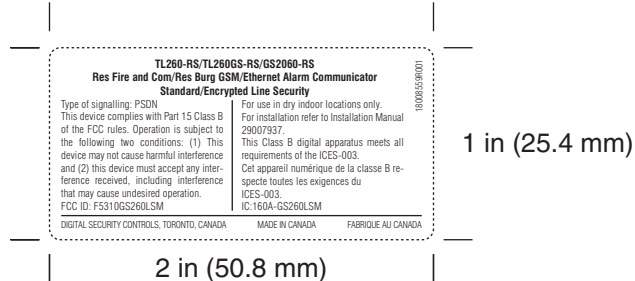
Cutting: Tolerance +/- 0.010"

Dashed line indicates cutting - will not print

Square label corners are acceptable.

NOTES:

1. All items must be RoHS compliant.
2. Markings on label must be PERMANENT
3. Indelible Ink
4. Conductive inks may not be used



Top of the PCB showing the label location