

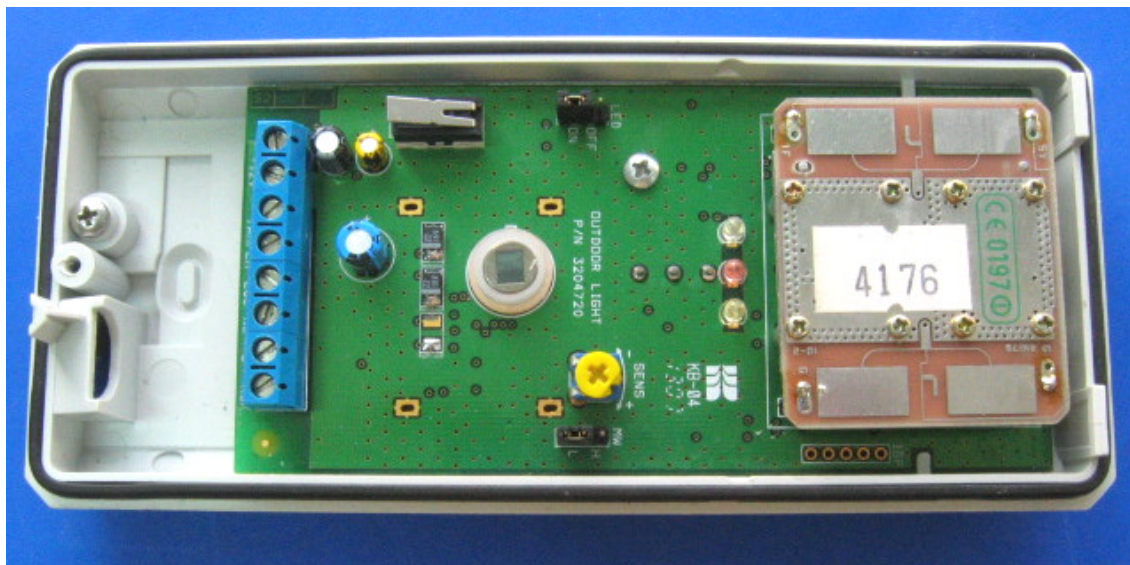
INTERNAL PHOTOGRAPHS

This document contains 10 photographs

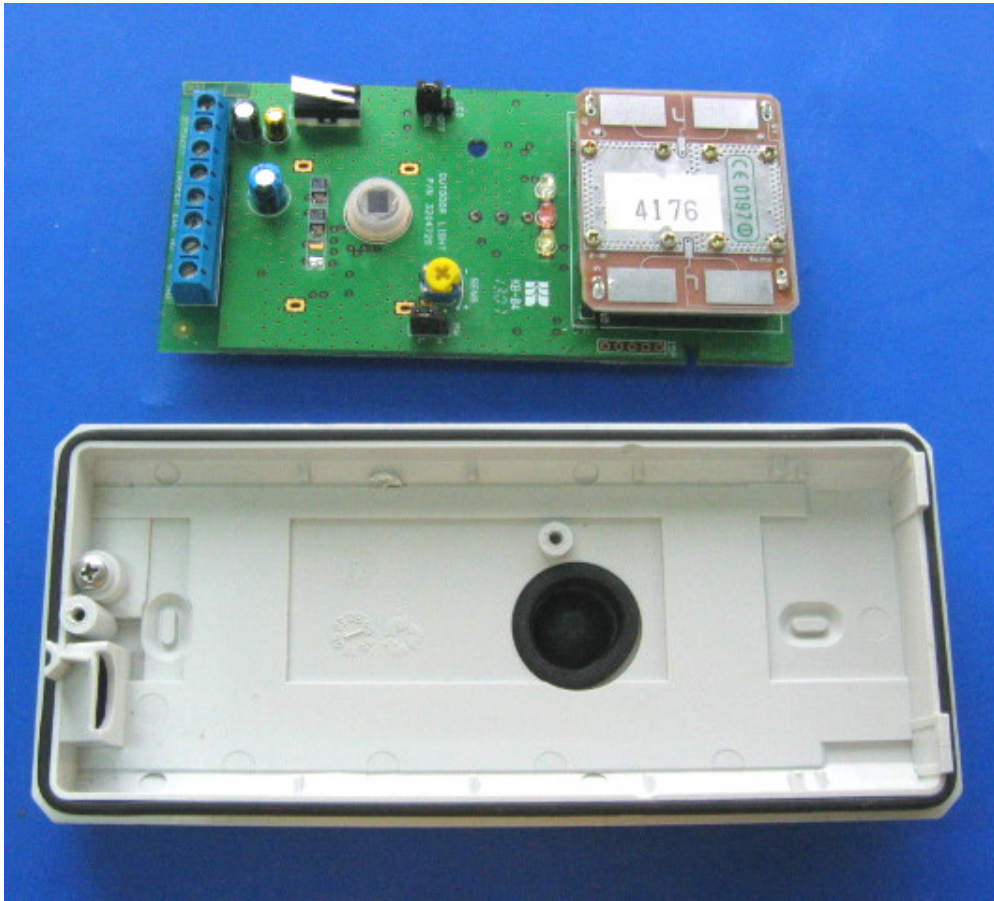
Photograph No.1
Detector internal view with removed front cover



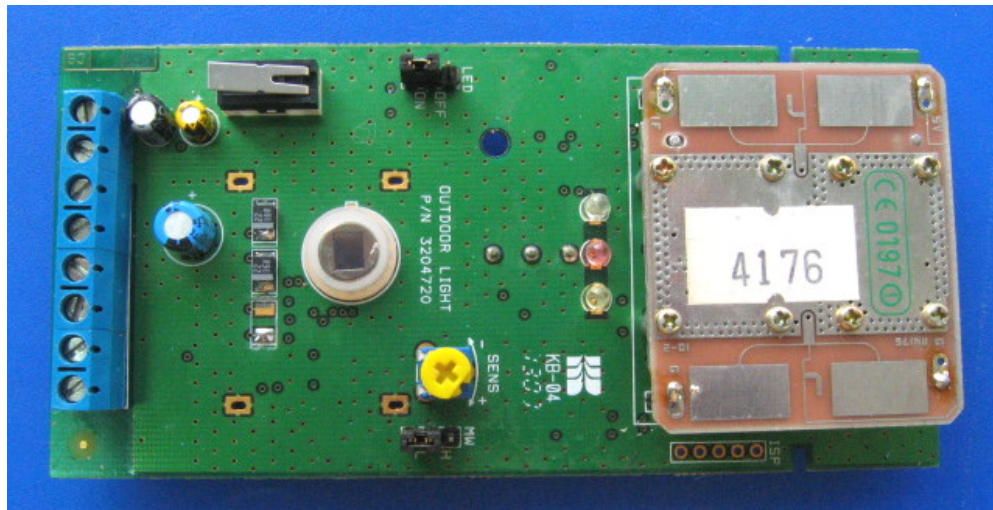
Photograph No.2
Detector internal view



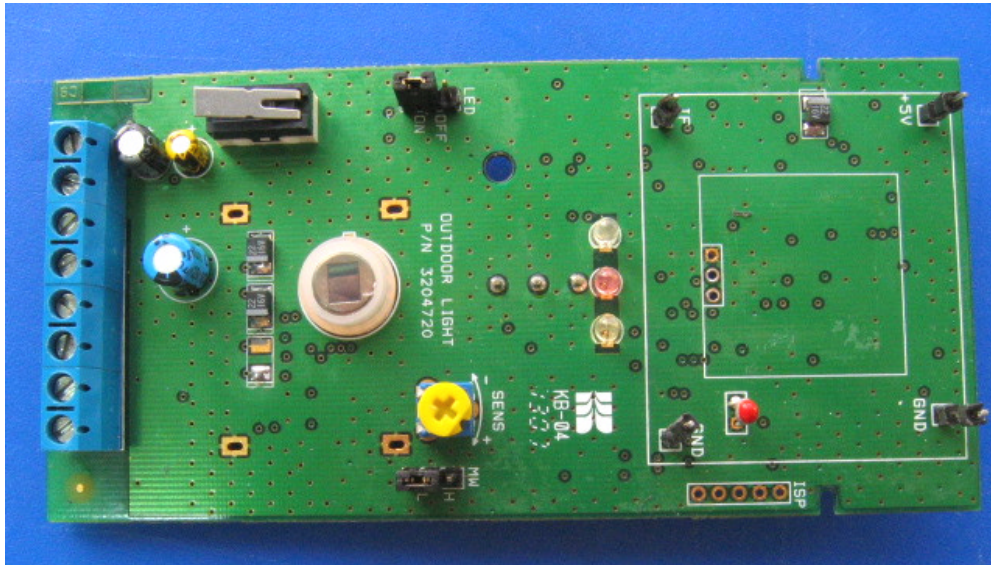
Photograph No.3
PCB removed from the back cover



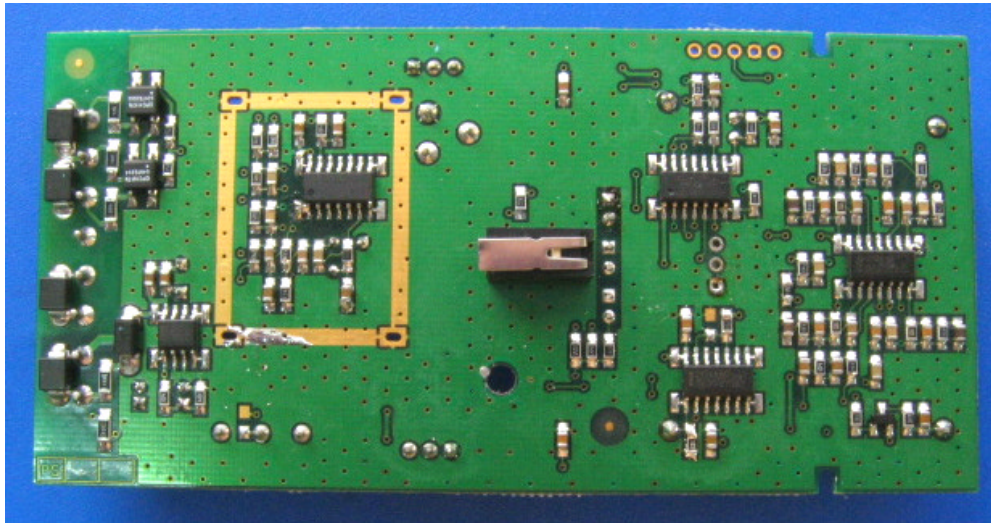
Photograph No.4
Main PCB front view



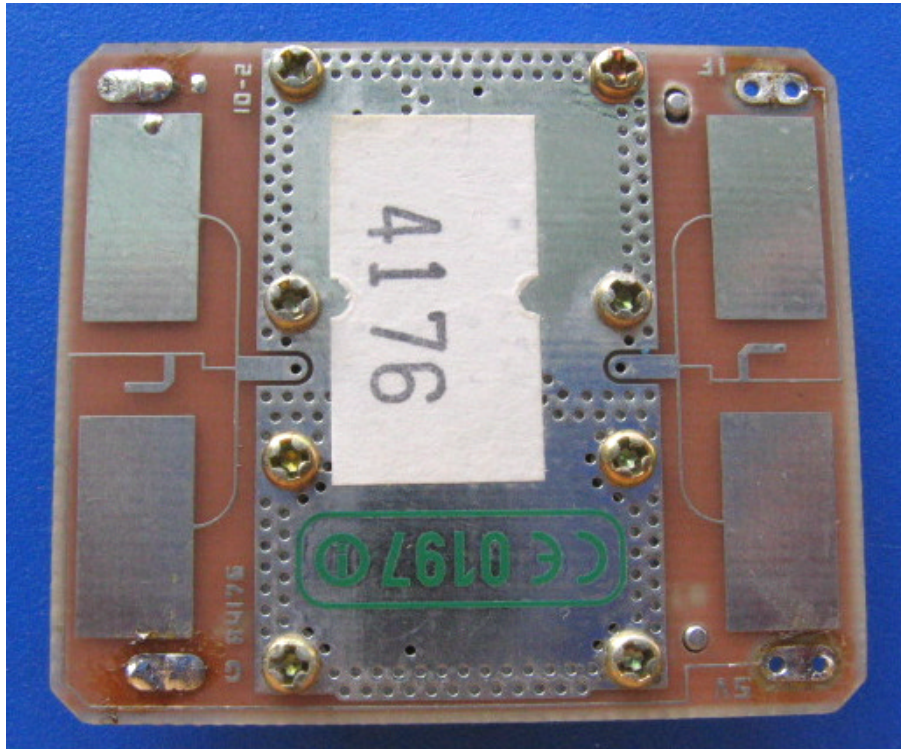
Photograph No.5
Main PCB with removed RF module



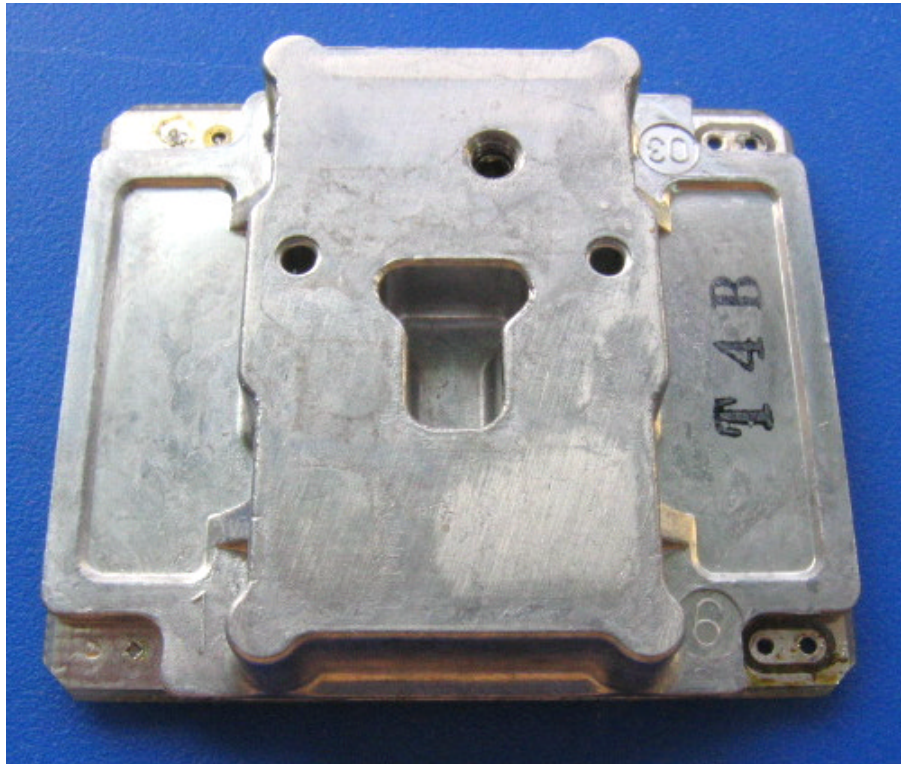
Photograph No.6
Second side of the main PCB



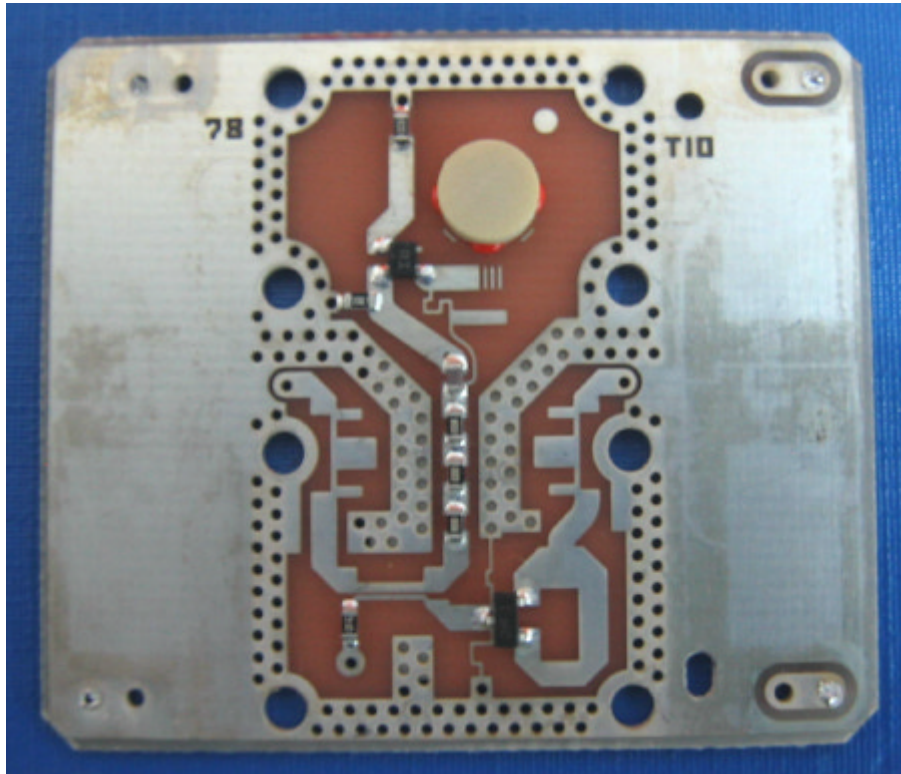
Photograph No.7
RF module front view



Photograph No.8
Second side of the RF module



Photograph No.9
Second side of the RF module



Photograph No.10
Shielding compartments of the RF PCB

