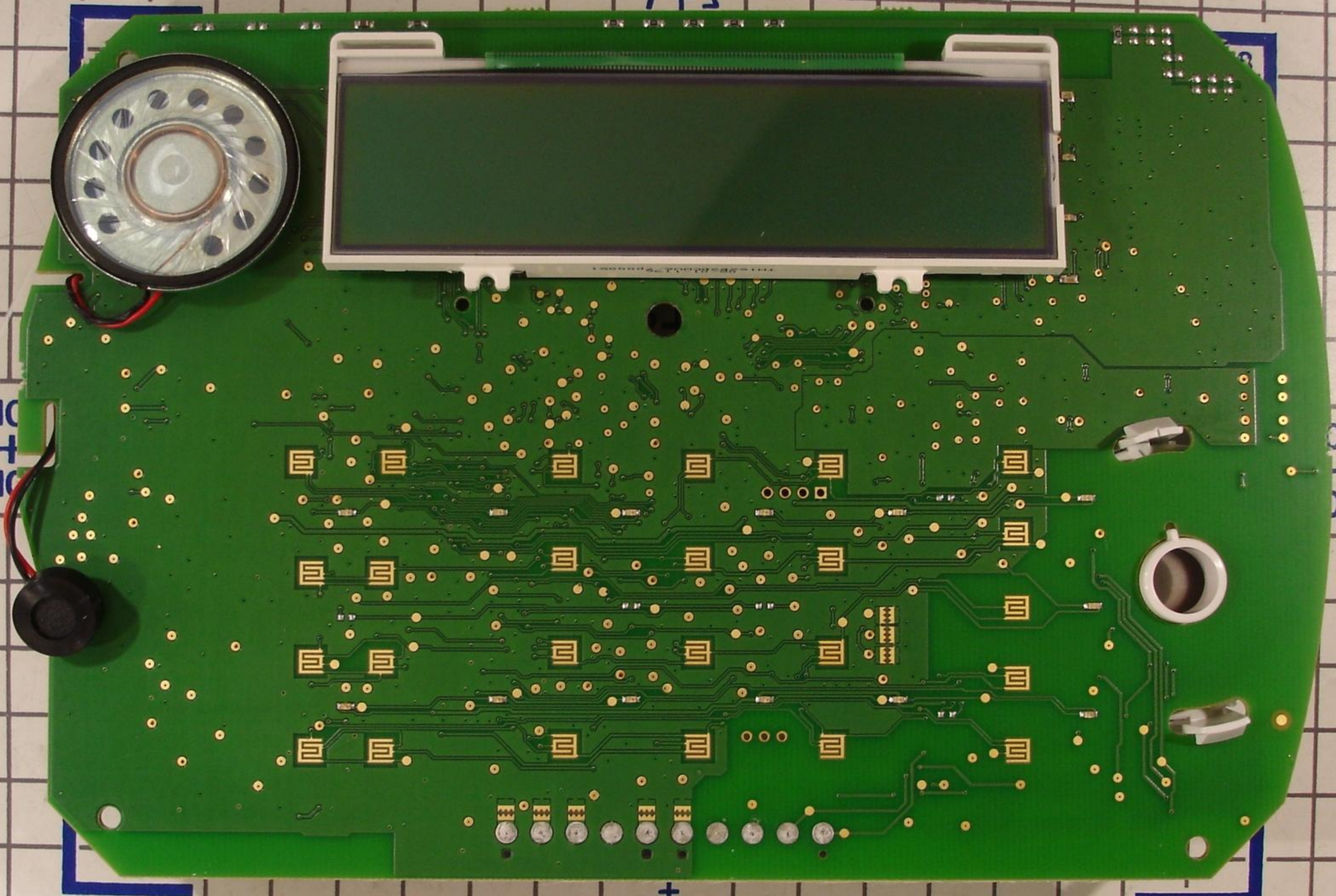


7+3



10  
+  
10

0  
+  
1

7+3

1-0  
07081  
109819-  
94V-0

NA  
AT=75

UA 535  
REV. 08

DSC

BAT  
Red(+) BIK(-)  
CON2 CON7



SW11

CON6

10347  
10  
50V

100 500V  
09 LH-A61-8500-1  
200 LL

T-1 R-1 TIP RING I/O2 I/O1 AUX- AUX+ AC AC

70V 220 3.5M

70V 220 3.5M

070 220 6.3V

151

470E  
UD

7M1 6.8 2.5M

151

77 10 25V

110 25V

47 10 25V

110 25V

47 10 25V

19V 47

100 16V

47 10 25V

77 10 25V

47 10 25V

110 25V

7M1 6.8 2.5M

77 10 25V

151

77 10 25V

151

7M1 6.8 2.5M

470E  
UD

70V 220 3.5M

70V 220 3.5M

151

151

151

151