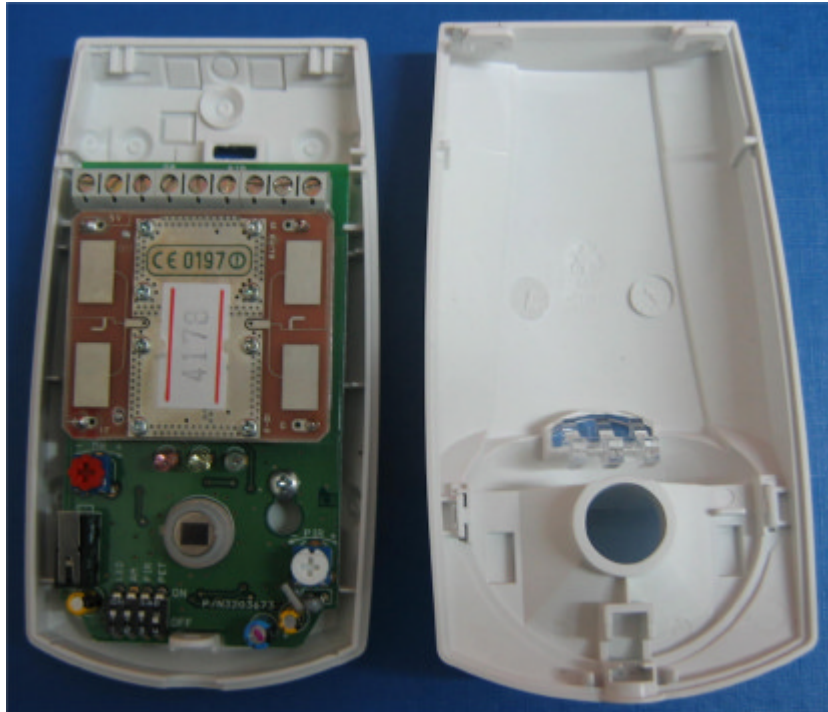


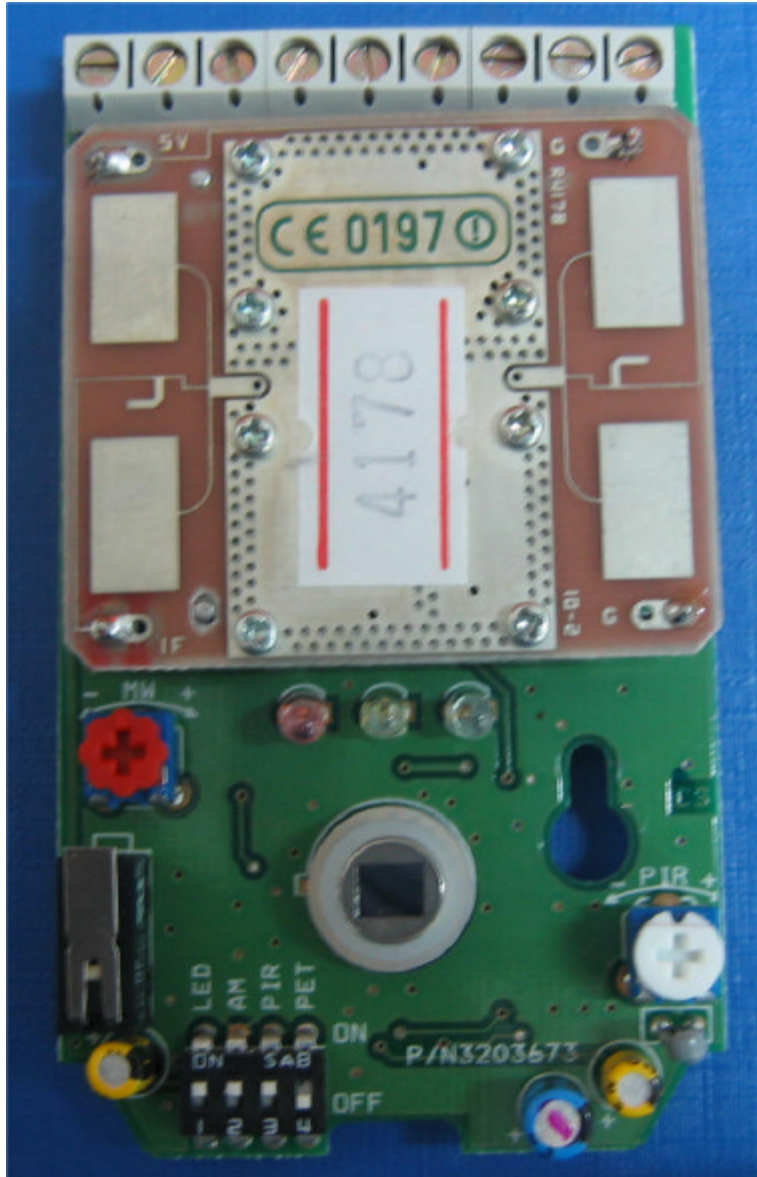
INTERNAL PHOTOGRAPHS

This document contains 9 photographs

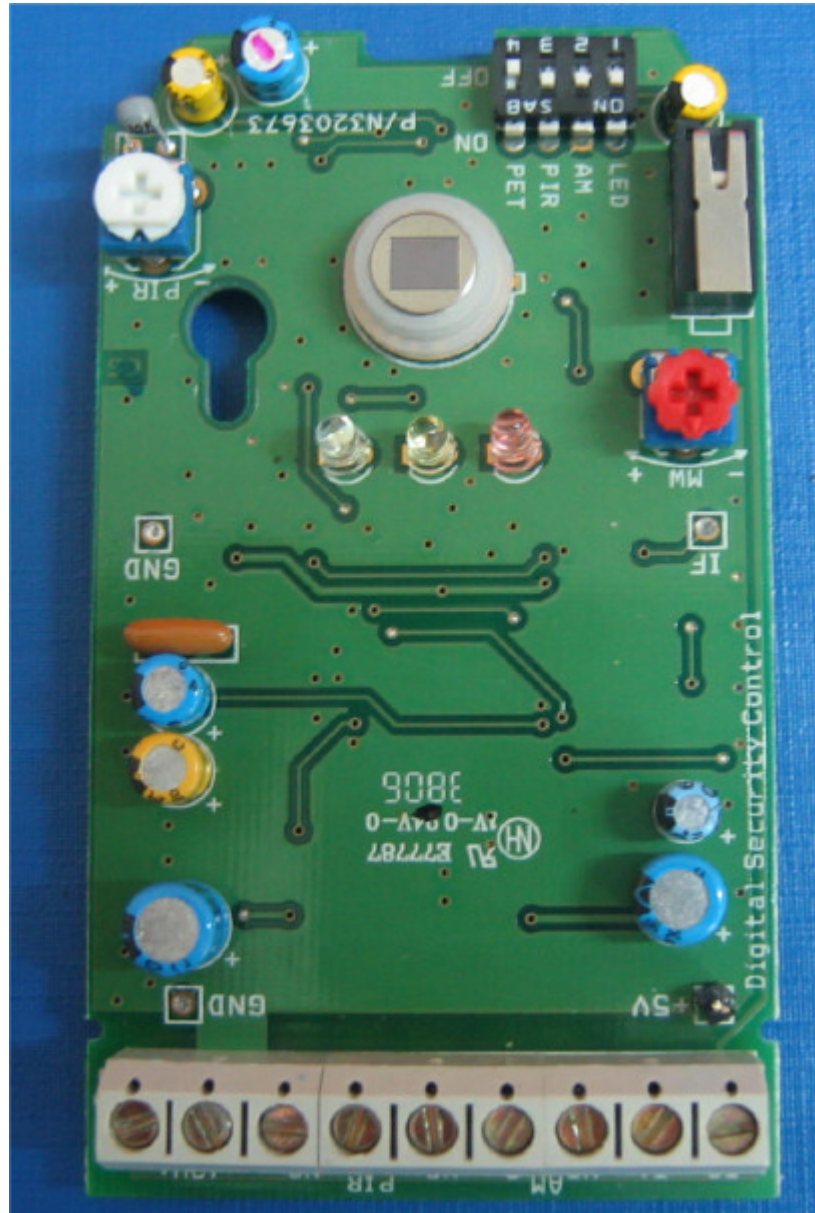
Photograph No.1
Detector internal view



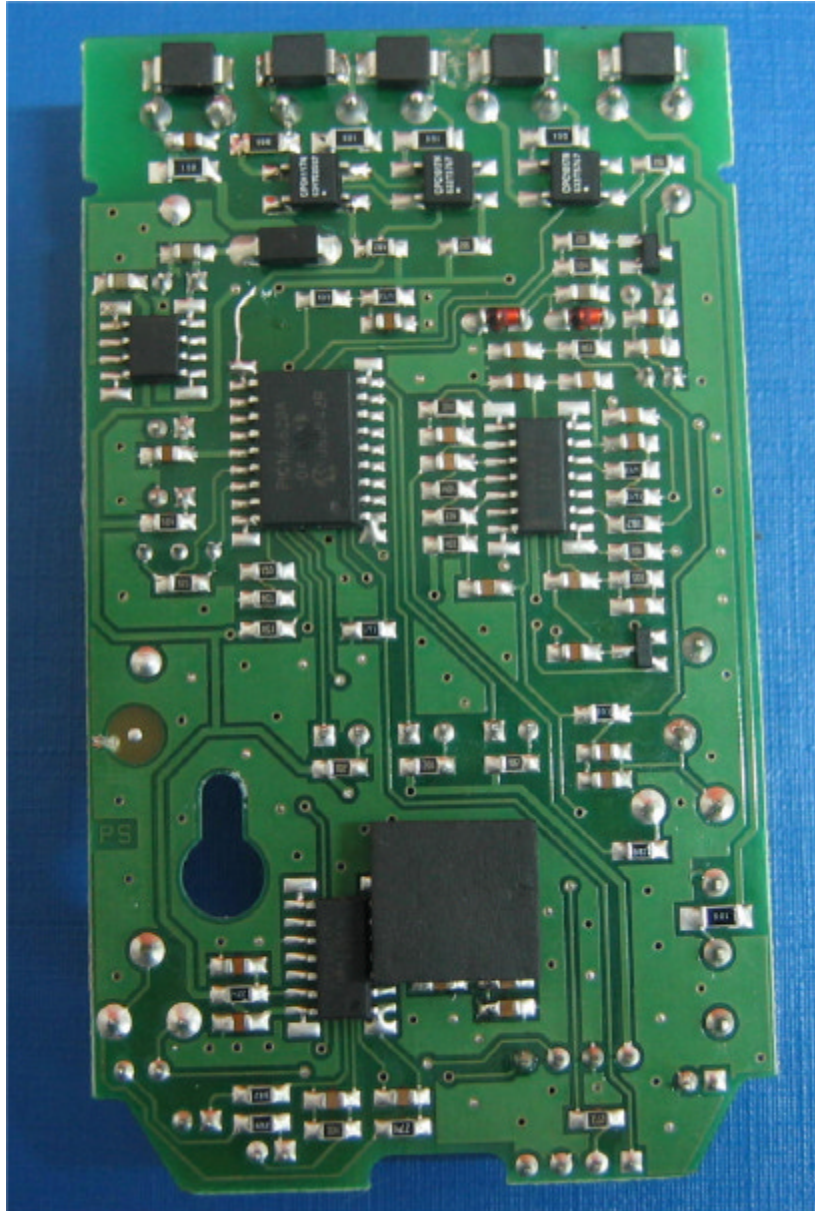
Photograph No2
Main PCB front view



Photograph No.3
Main PCB without RF module



Photograph No.4
Second side of the main PCB



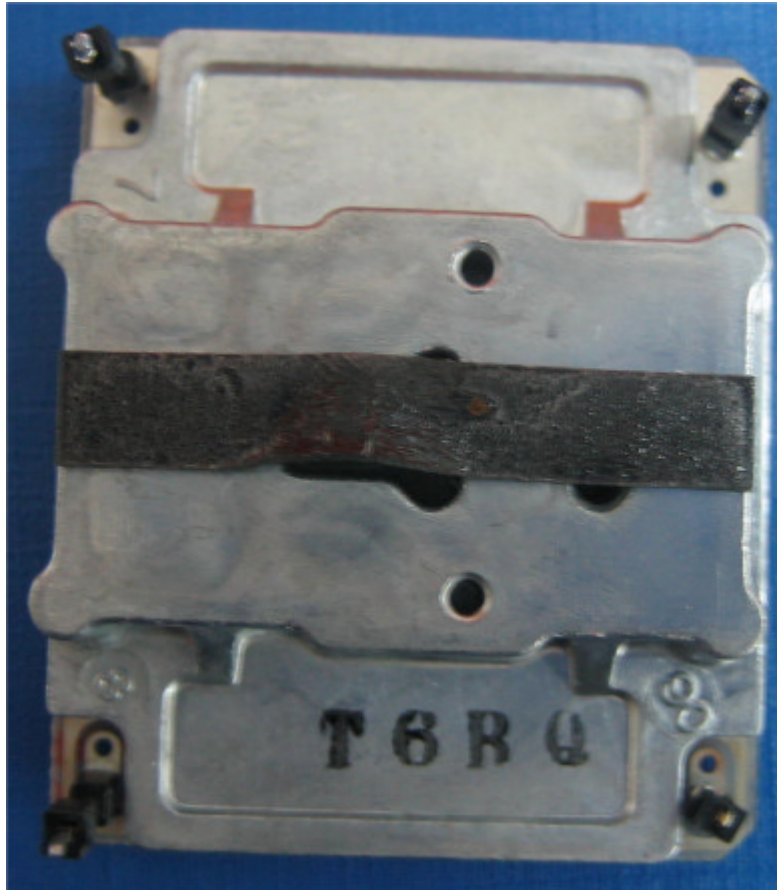
Photograph No.5
RF module front view



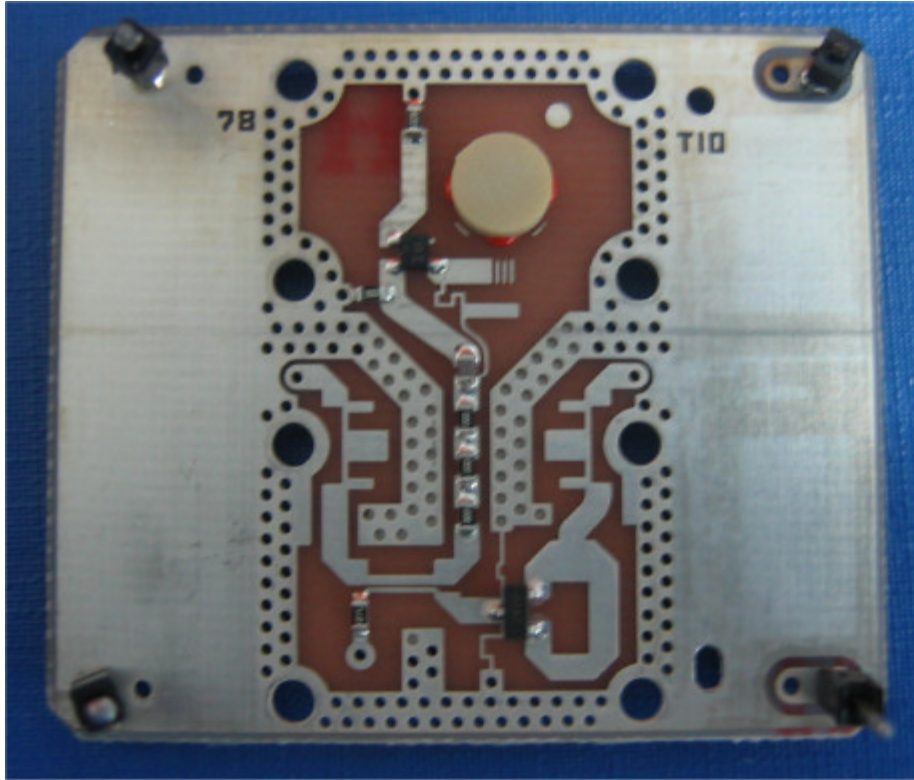
Photograph No.6
RF module PCB front view



Photograph No.7
Second side of the RF module



Photograph No.8
Second side of the RF module



Photograph No.9
Shielding compartments of the RF PCB

