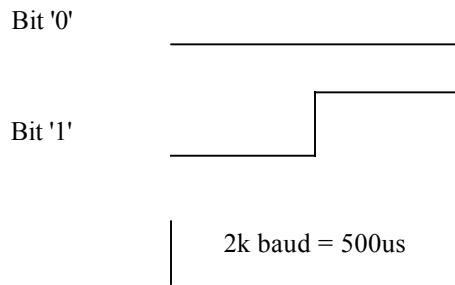
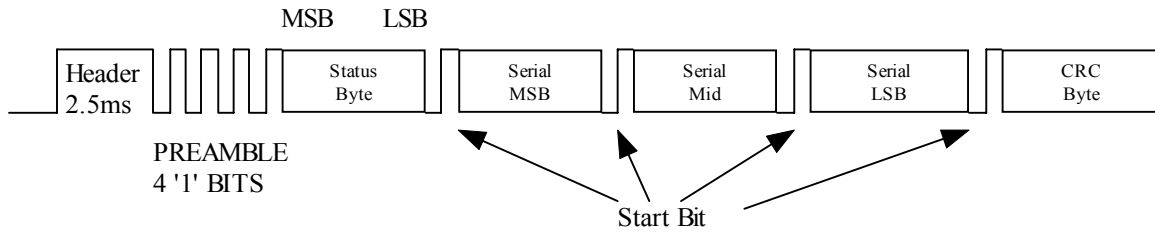


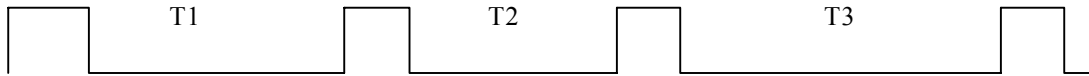
DSC Communication



Transmission Format: A complete transmission consists of a header, 4 sync bits, status byte, 24bit serial number, and 8 bit CRC.



A complete transmission consists of 4 packets of data. The timing between packets is defined as follows:



$$T1 = 100\text{ms} + (50\text{ms} * \text{Serial Number LSB bit } 1,0)$$

$$T2 = 100\text{ms} + (50\text{ms} * \text{Serial Number LSB bit } 3,2)$$

$$T3 = 100\text{ms} + (50\text{ms} * \text{Serial Number LSB bit } 5,4)$$

Example: If Serial Number LSB is 00110010. Then $T1 = 200\text{ms}$, $T2 = 100\text{ms}$, and $T3 = 250\text{ms}$.