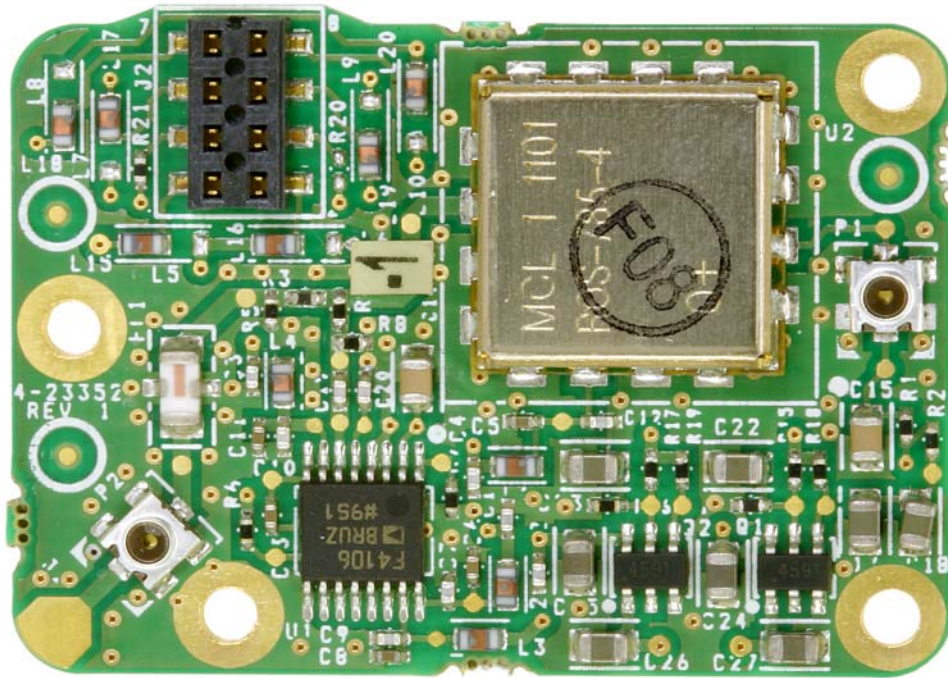
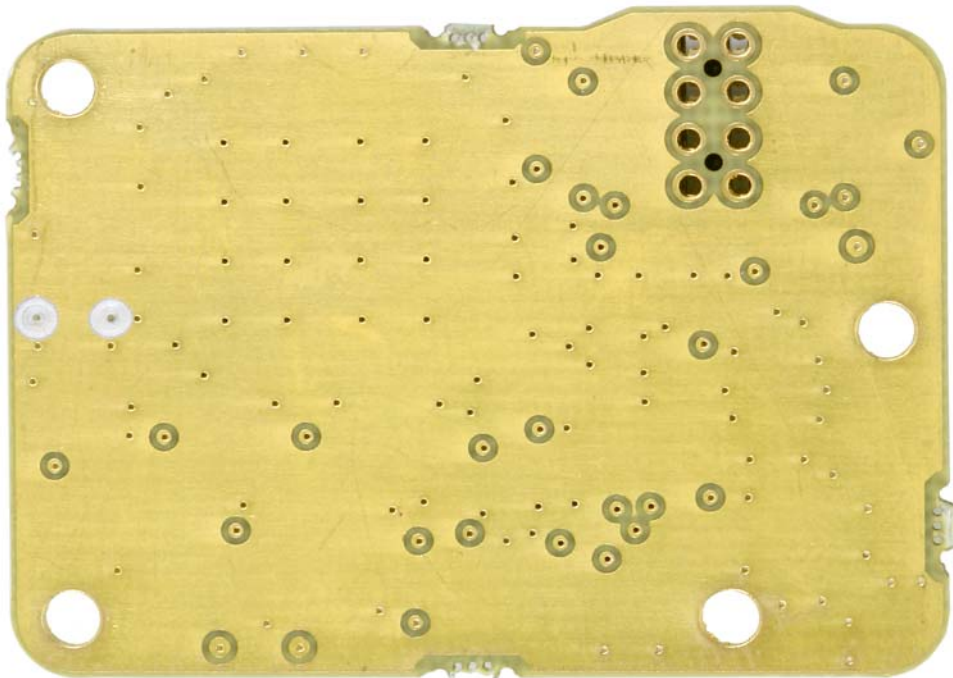


Channelized Signal Booster (Model 613-8) - Internal Photos

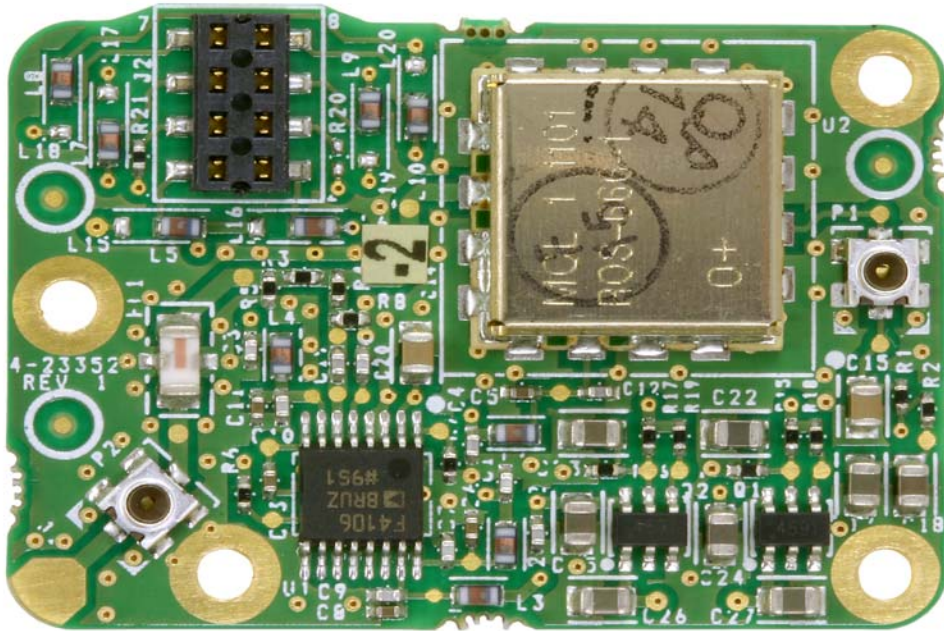


Channel Module Oscillator board 3-23351-1 top view.

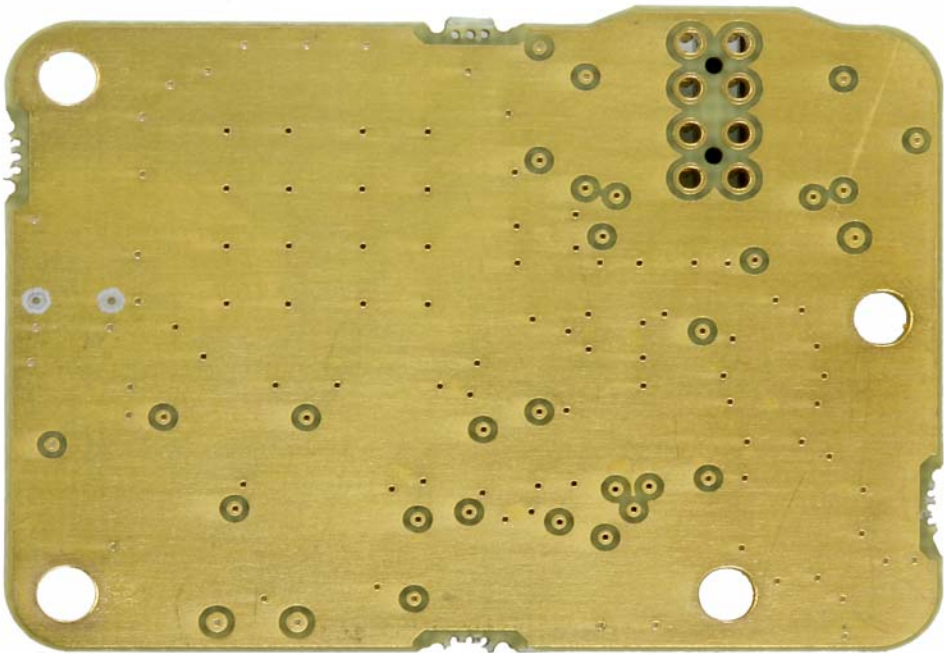


Channel Module Oscillator board 3-23351-1 bottom view.

Channelized Signal Booster (Model 613-8) - Internal Photos



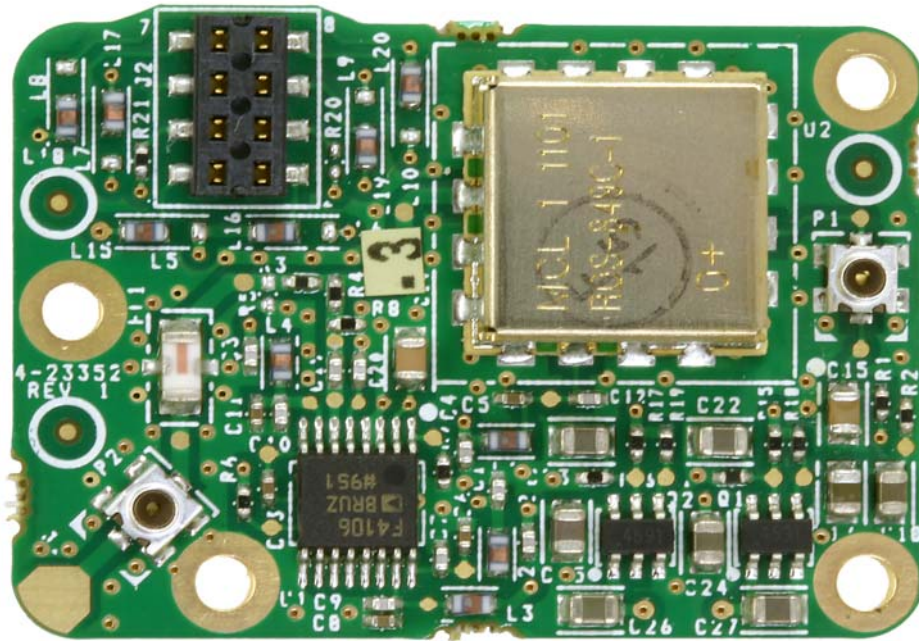
Channel Module Oscillator board 3-23351-2 top view.



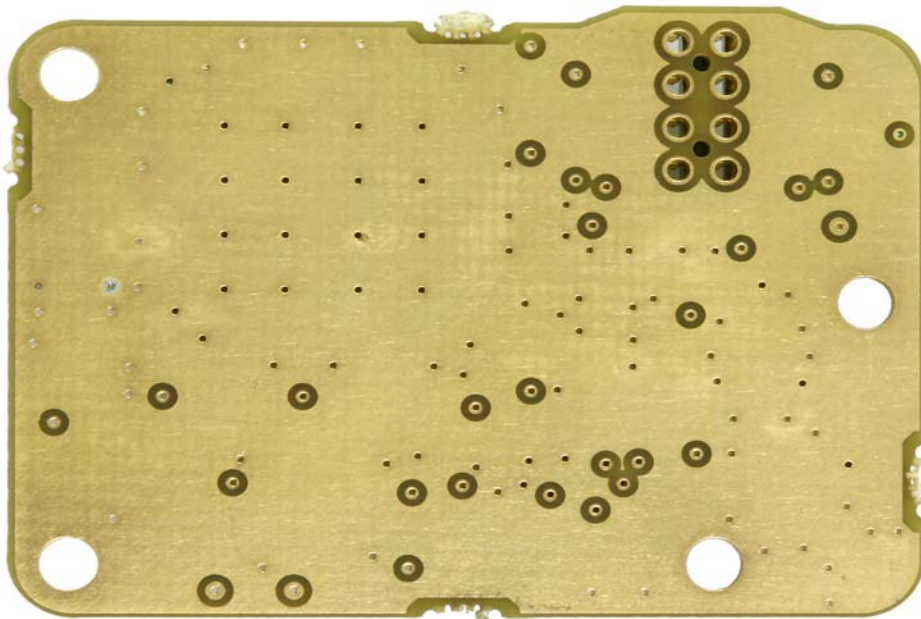
Channel Module Oscillator board 3-23351-2 bottom view.



Channelized Signal Booster (Model 613-8) - Internal Photos

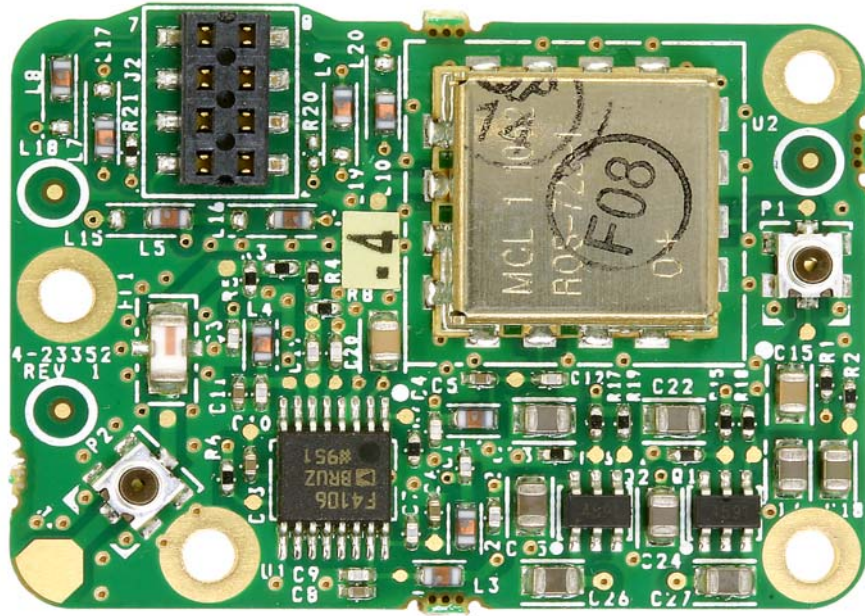


Channel Module Oscillator board 3-23351-3 top view.

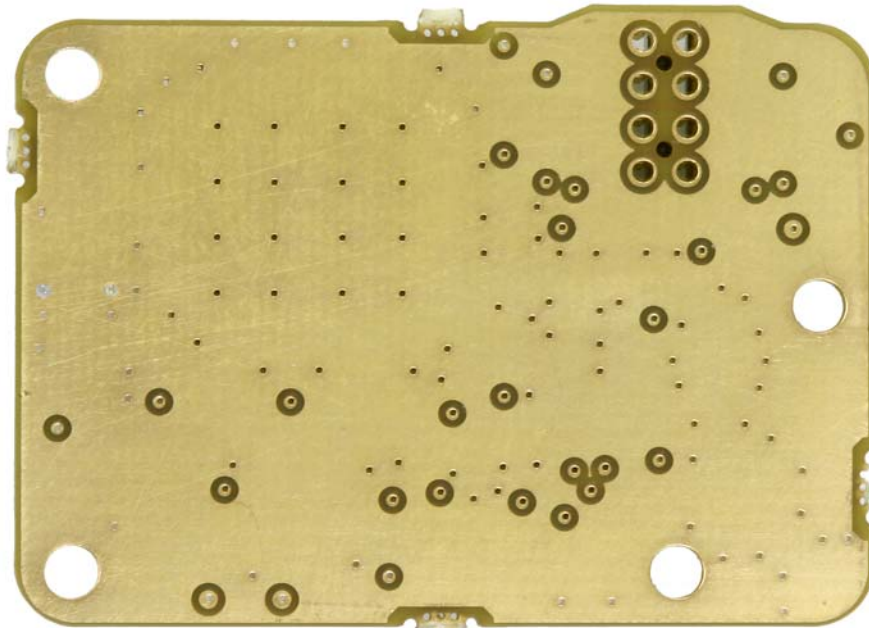


Channel Module Oscillator board 3-23351-3 bottom view.

Channelized Signal Booster (Model 613-8) - Internal Photos



Channel Module Oscillator board 3-23351-4 top view.



Channel Module Oscillator board 3-23351-4 bottom view.

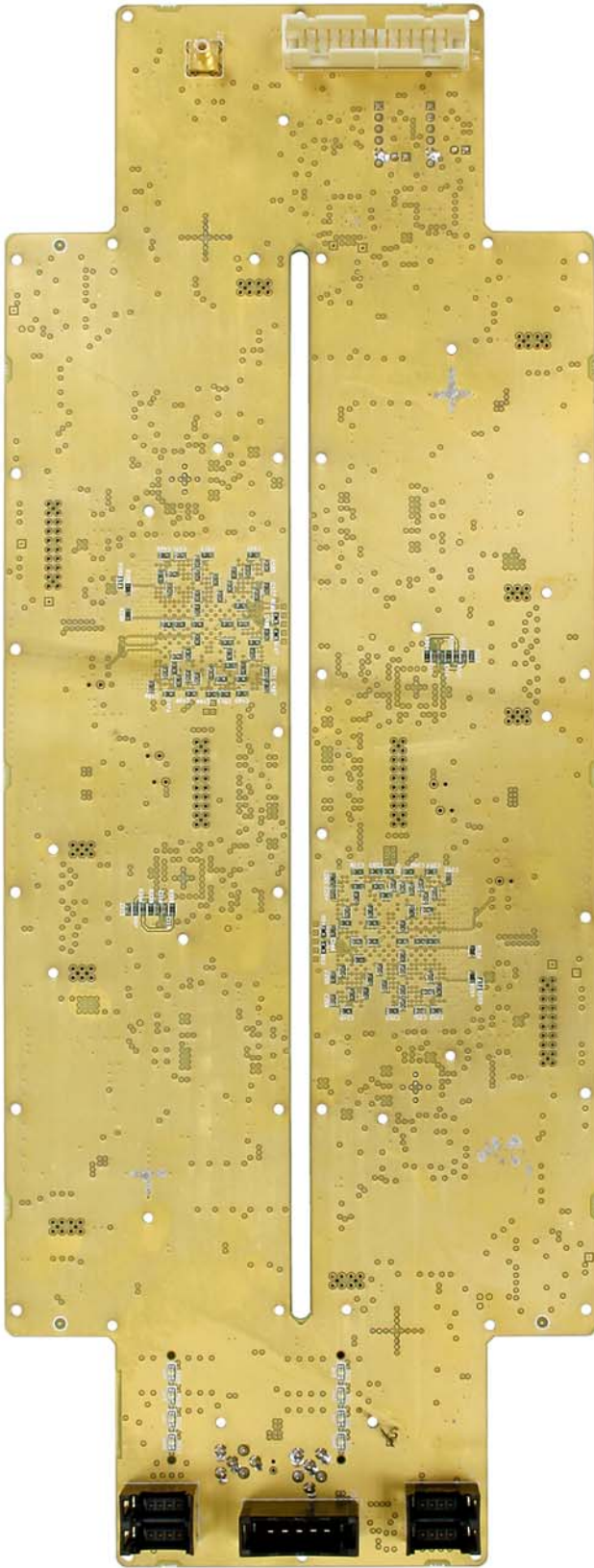


# Channelized Signal Booster (Model 613-8) - Internal Photos



Channel Module Digital board 3-23353-1  
top view.

Channelized Signal Booster (Model 613-8) - Internal Photos



Channel Module Digital board 3-23353-1  
top view.

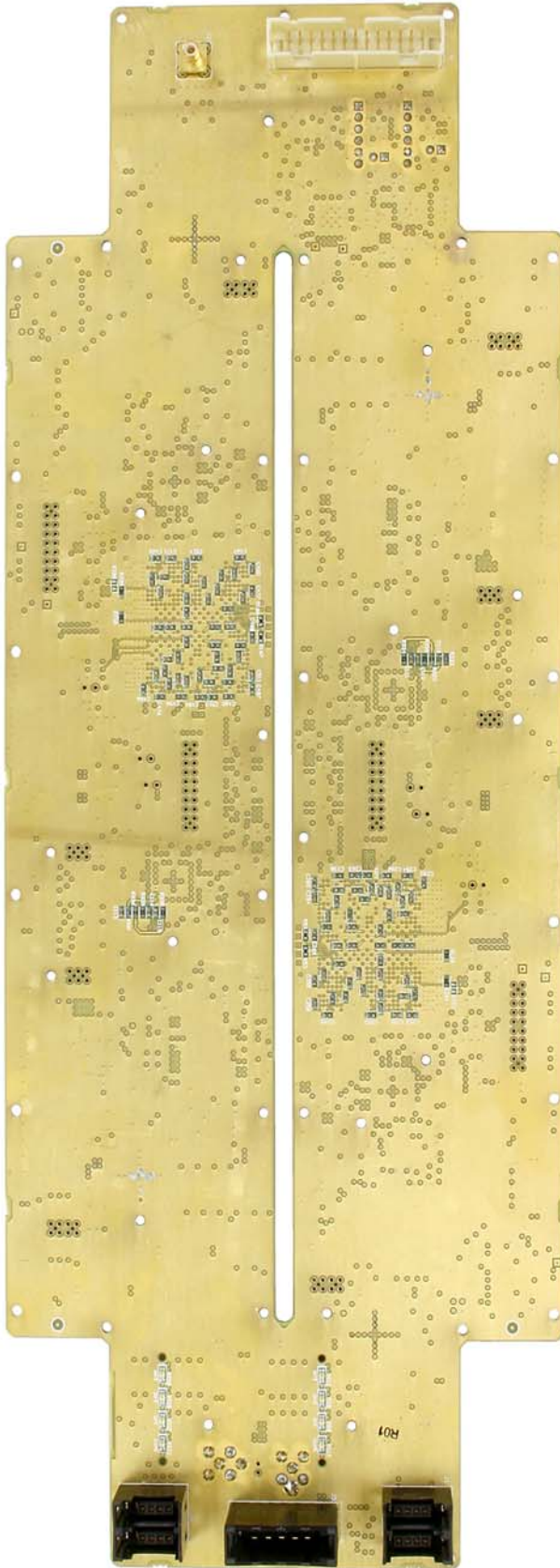


Channelized Signal Booster (Model 613-8) - Internal Photos



Channel Module Digital board 3-23353-2  
top view.

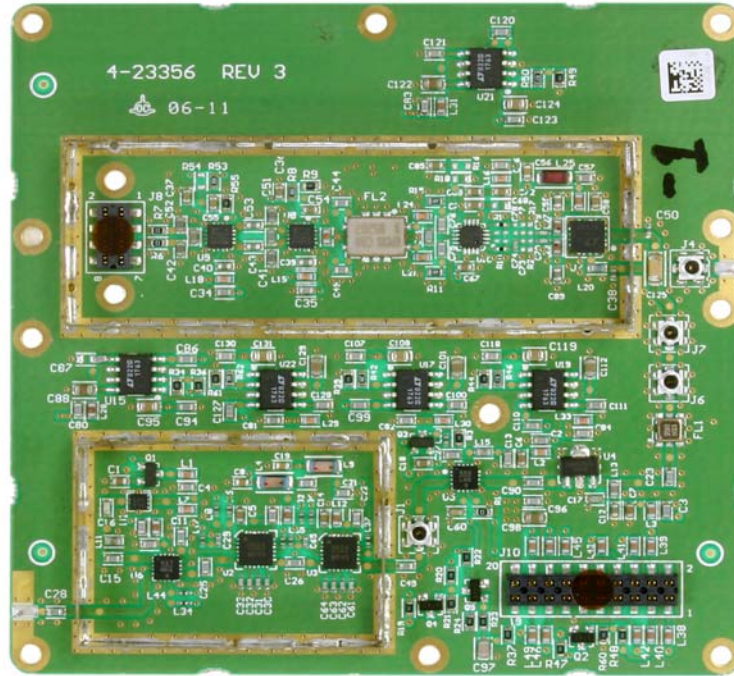
Channelized Signal Booster (Model 613-8) - Internal Photos



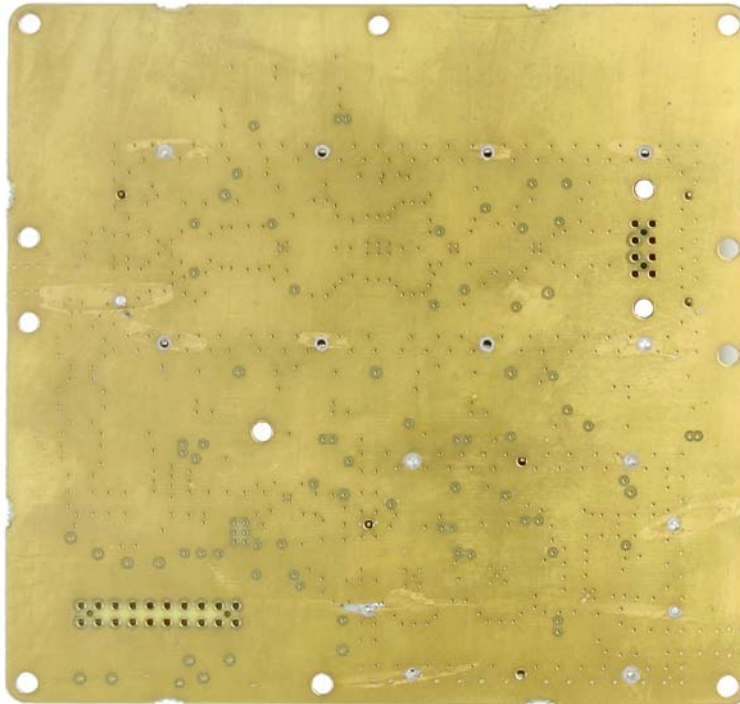
Channel Module Digital board 3-23353-2  
bottom view.



# Channelized Signal Booster (Model 613-8) - Internal Photos

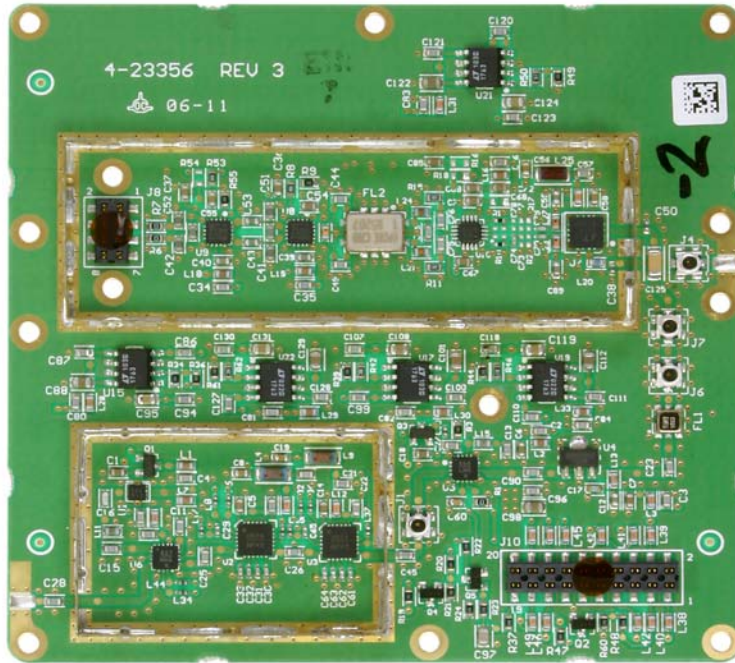


Channel Module Downconverter board 3-23355-1 top view.

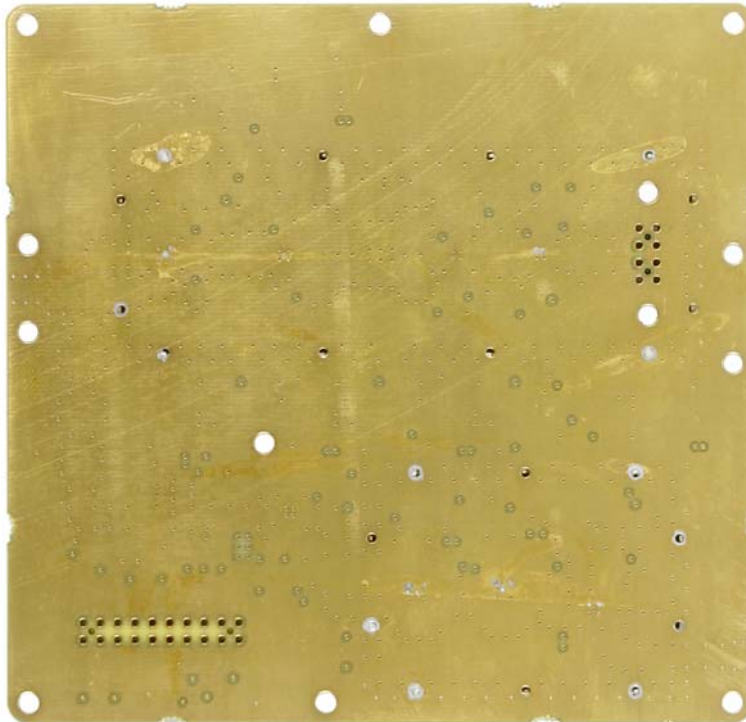


Channel Moule Downconverter board 3-23355-1 bottom view.

Channelized Signal Booster (Model 613-8) - Internal Photos



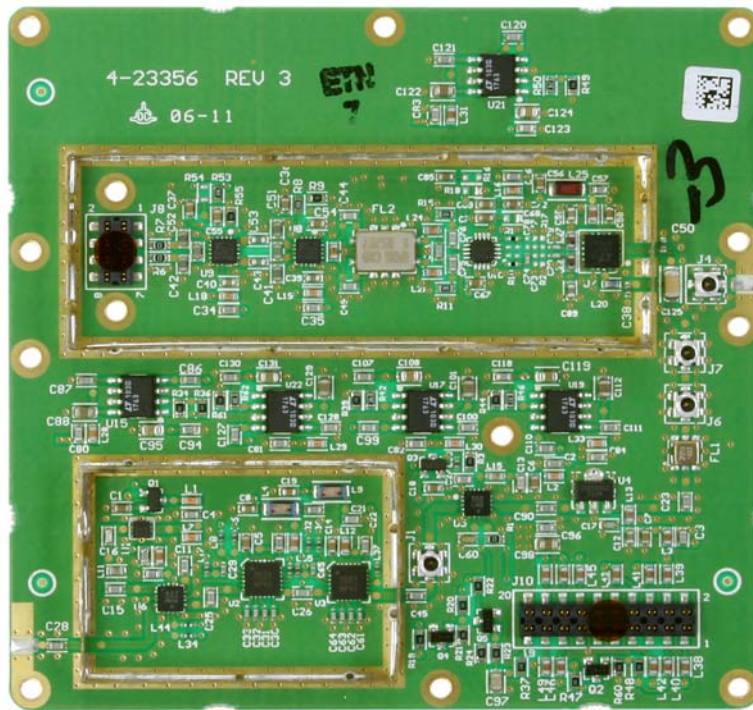
Channel Module Downconverter board 3-23355-2 top view.



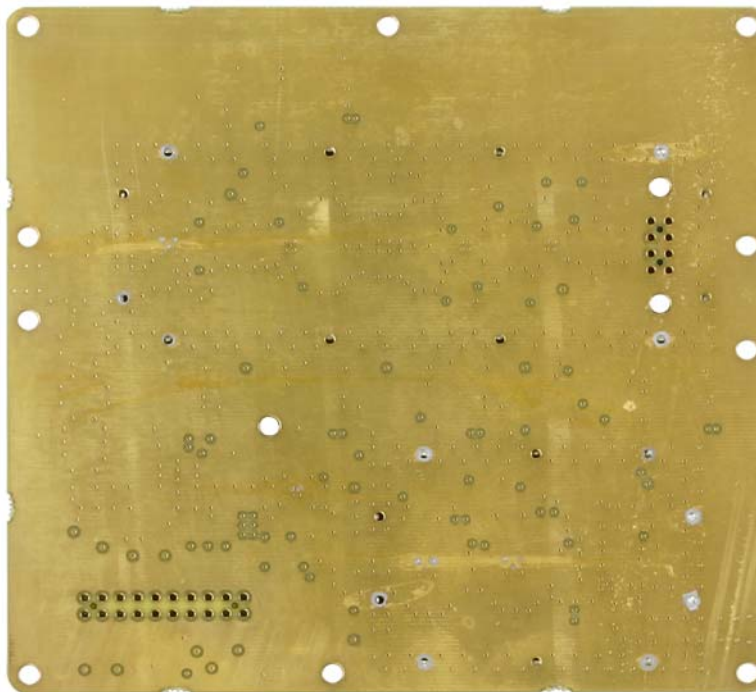
Channel Module Downconverter board 3-23355-2 bottom view.



Channelized Signal Booster (Model 613-8) - Internal Photos

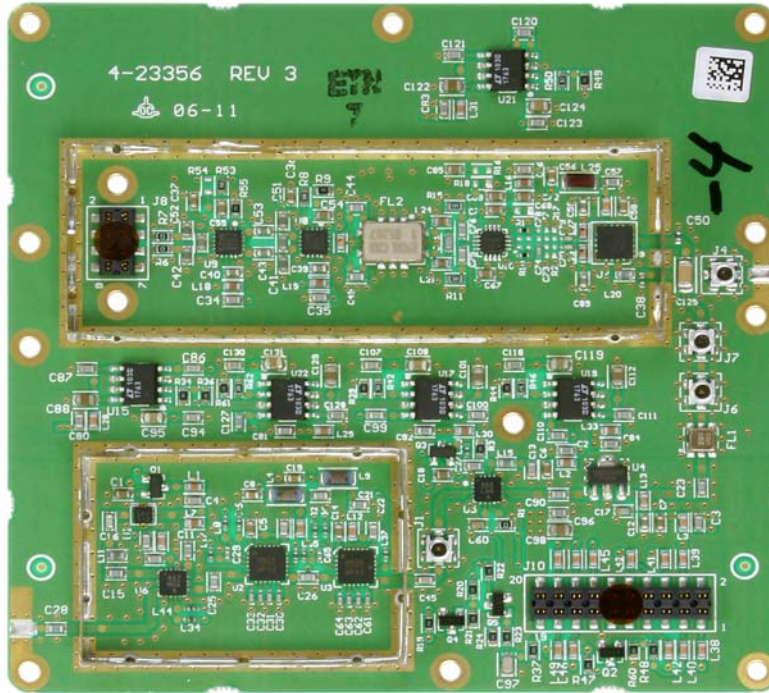


Channel Module Downconverter board 3-23355-3 top view.

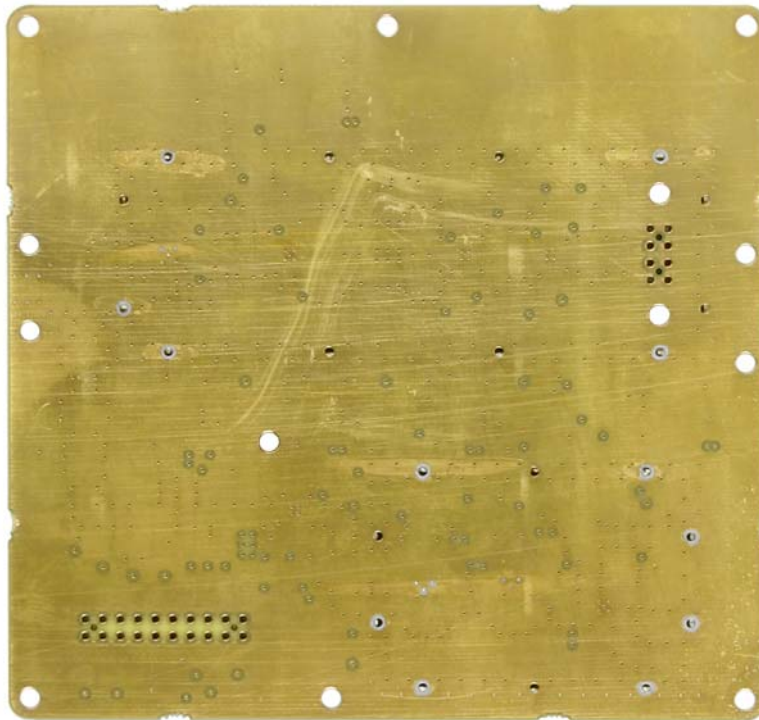


Channel Module Downconverter board 3-23355-3 bottom view.

Channelized Signal Booster (Model 613-8) - Internal Photos



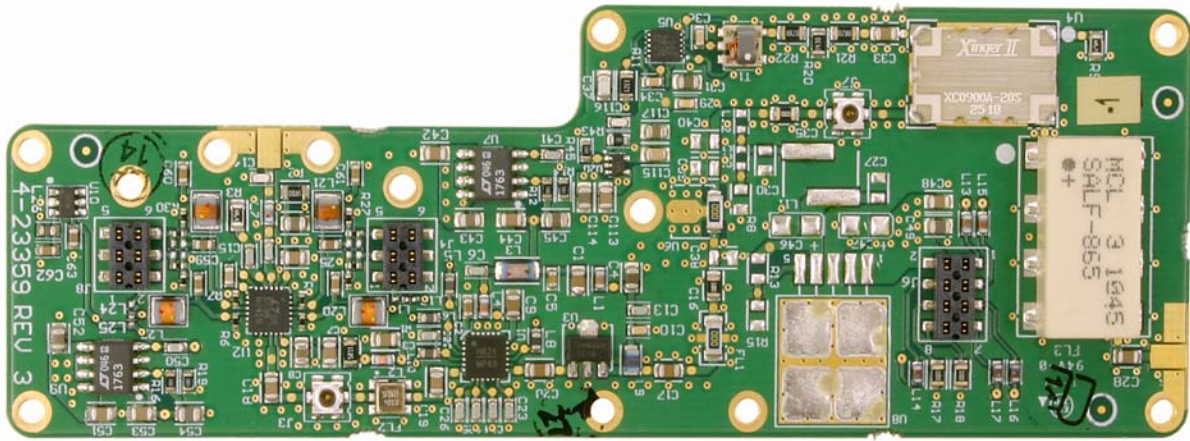
Channel Module Downconverter board 3-23355-4 top view.



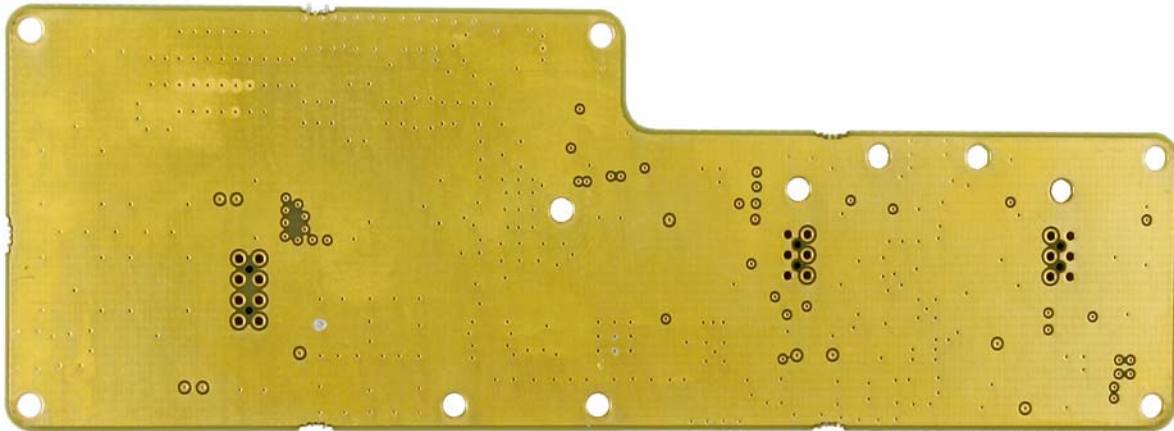
Channel Module Downconverter board 3-23355-4 bottom view.



Channelized Signal Booster (Model 613-8) - Internal Photos

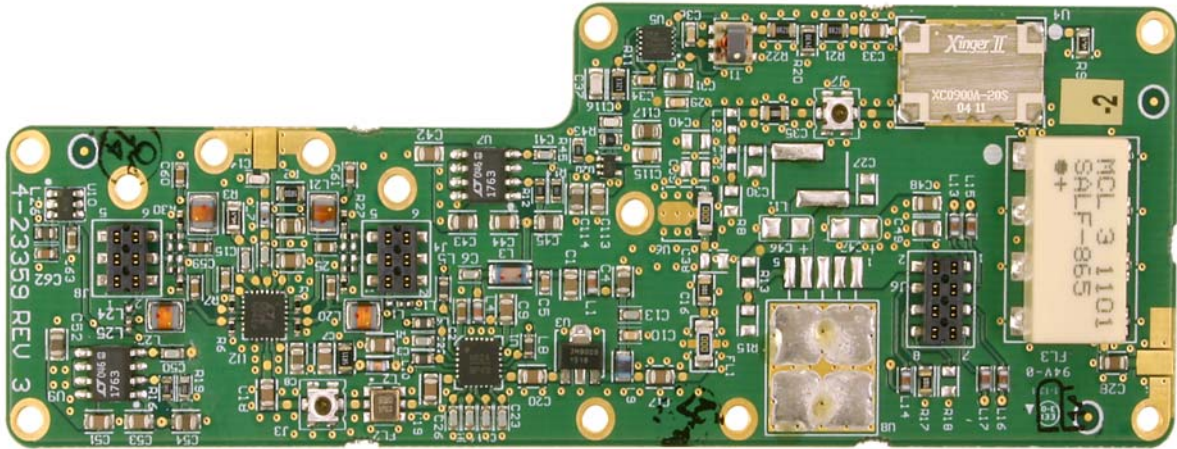


Channel Module Upconverter board 3-23357-1 top view.

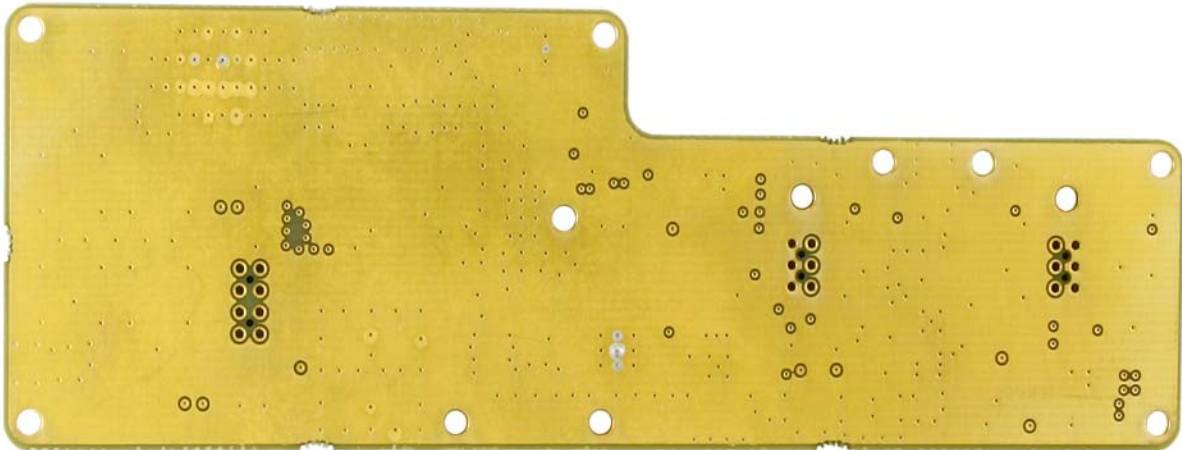


Channel Module Upconverter board 3-23357-1 bottom view.

Channelized Signal Booster (Model 613-8) - Internal Photos



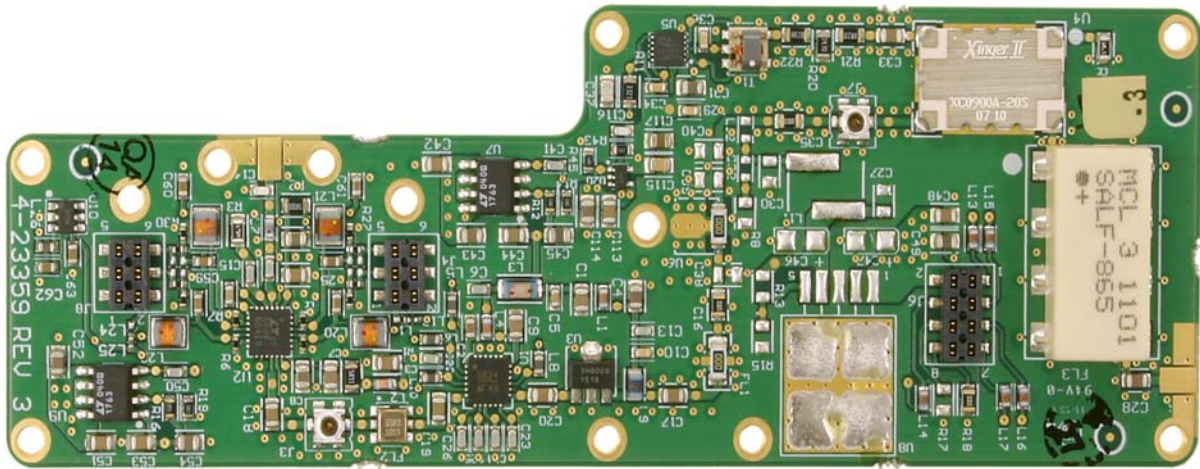
Channel Module Upconverter board 3-23357-2 top view.



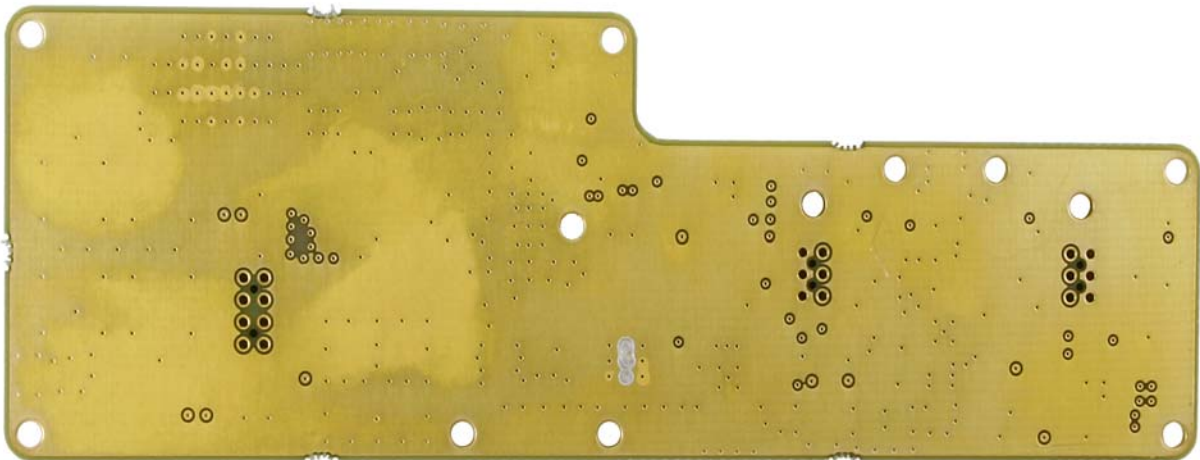
Channel Module Upconverter board 3-23357-2 bottom view.



Channelized Signal Booster (Model 613-8) - Internal Photos

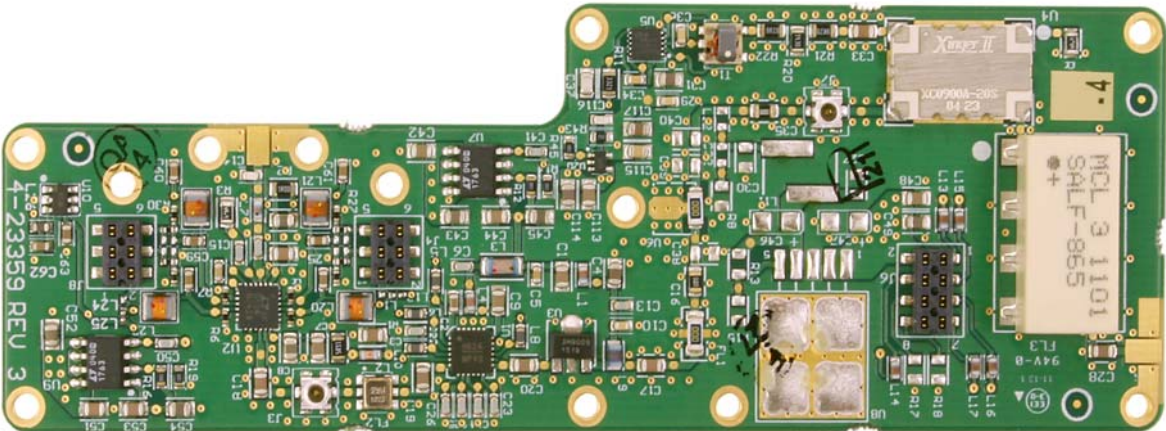


Channel Module Upconverter board 3-23357-3 top view.

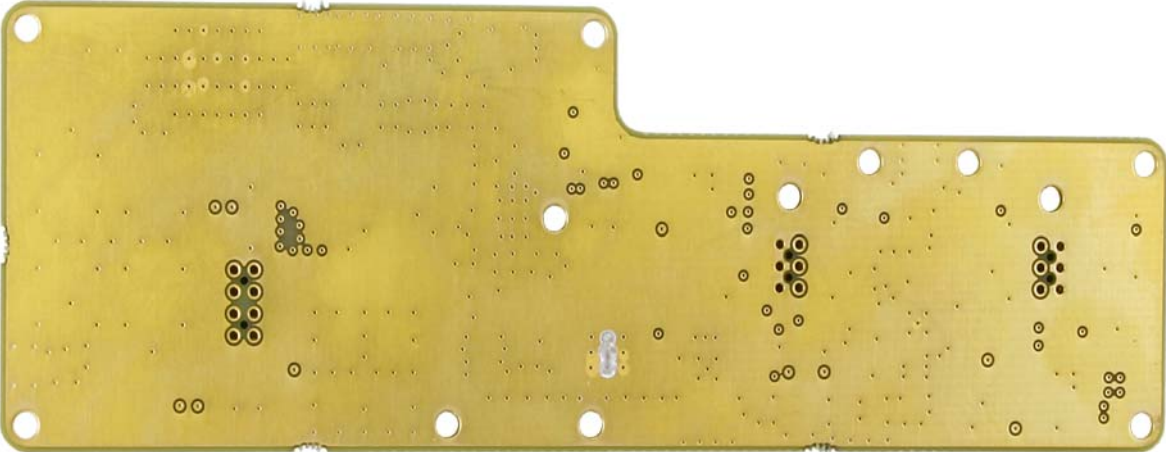


Channel Module Upconverter board 3-23357-3 bottom view.

Channelized Signal Booster (Model 613-8) - Internal Photos



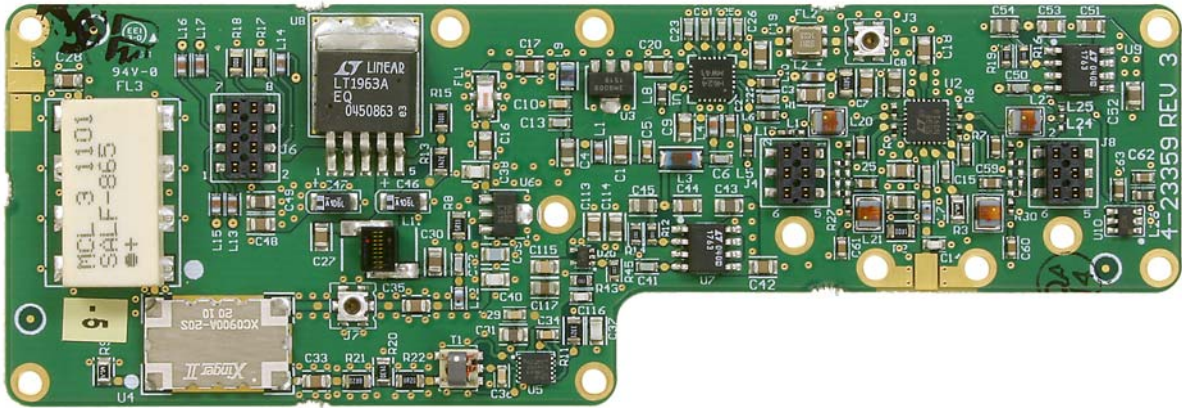
Channel Module Upconverter board 3-23357-4 top view.



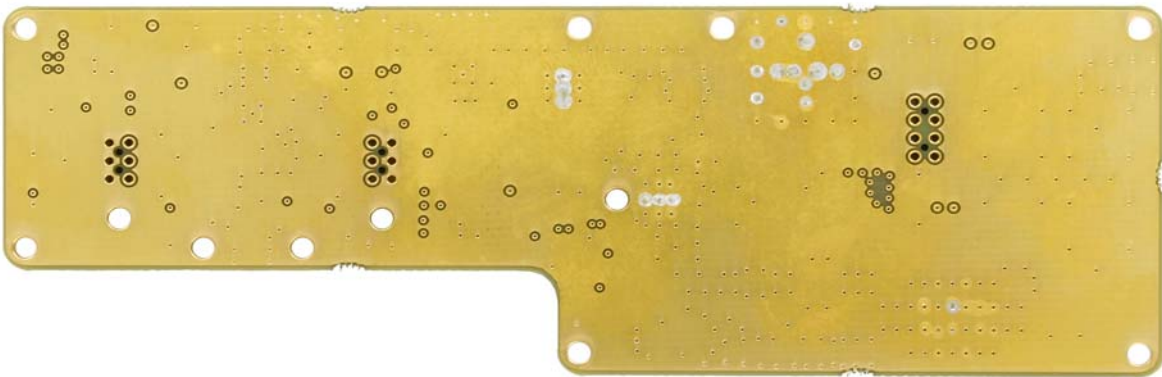
Channel Module Upconverter board 3-23357-4 bottom view.



# Channelized Signal Booster (Model 613-8) - Internal Photos

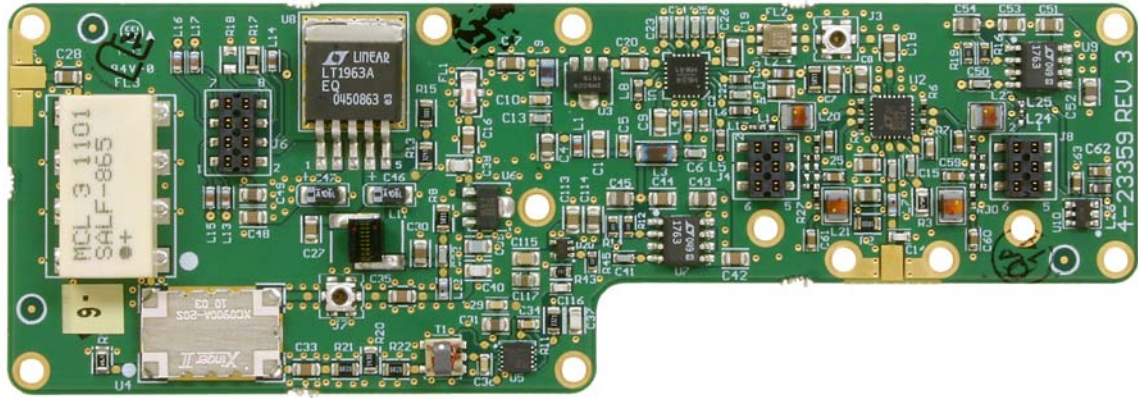


Channel Module Upconverter board 3-23357-5 top view.

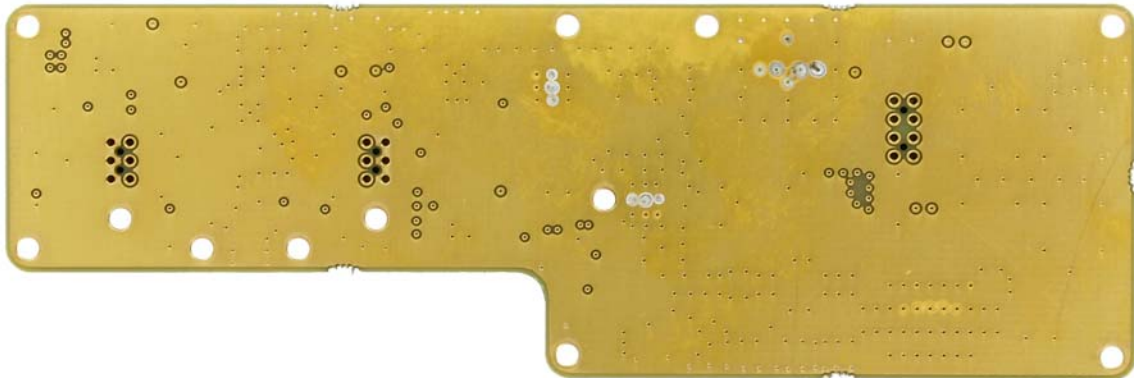


Channel Module Upconverter board 3-23357-5 bottom view.

# Channelized Signal Booster (Model 613-8) - Internal Photos



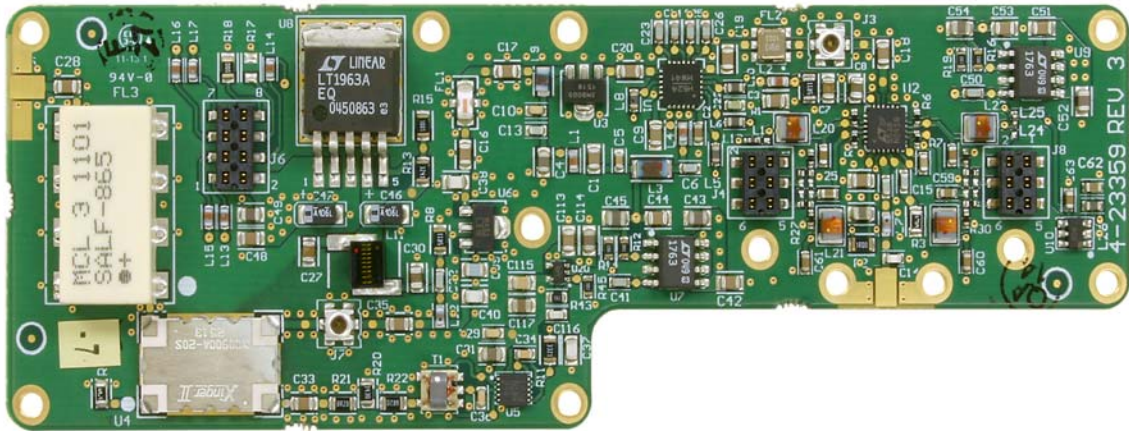
Channel Module Upconverter board 3-23357-6 top view.



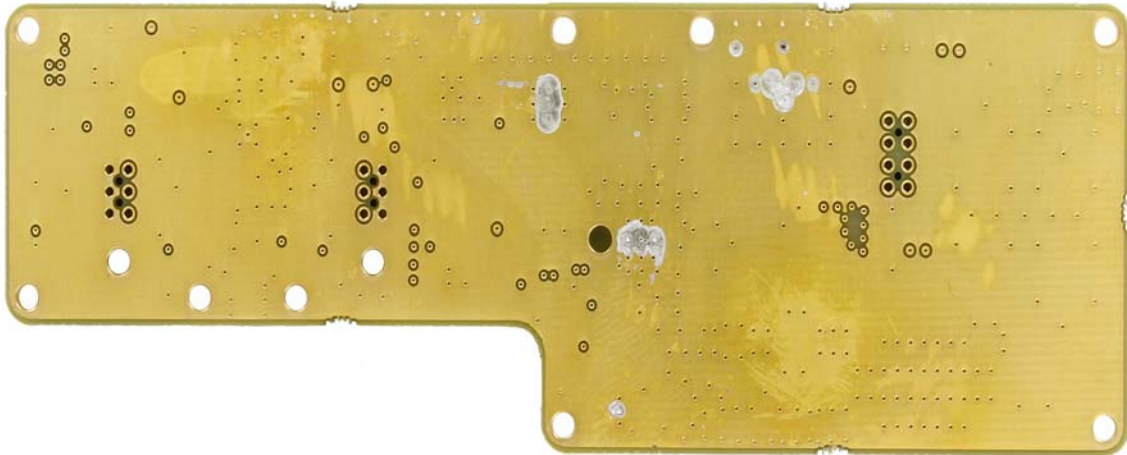
Channel Module Upconverter board 3-23357-6 bottom view.



# Channelized Signal Booster (Model 613-8) - Internal Photos



Channel Module Upconverter board 3-23357-7 top view.

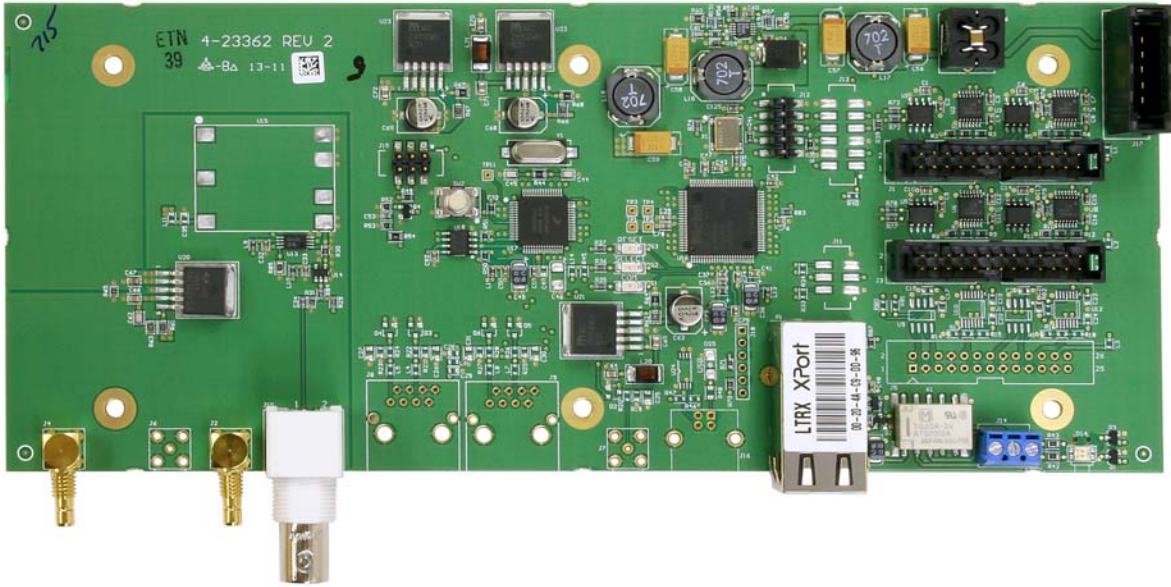


Channel Module upconverter board 3-23357-7 bottom view.





## Channelized Signal Booster (Model 613-8) - Internal Photos

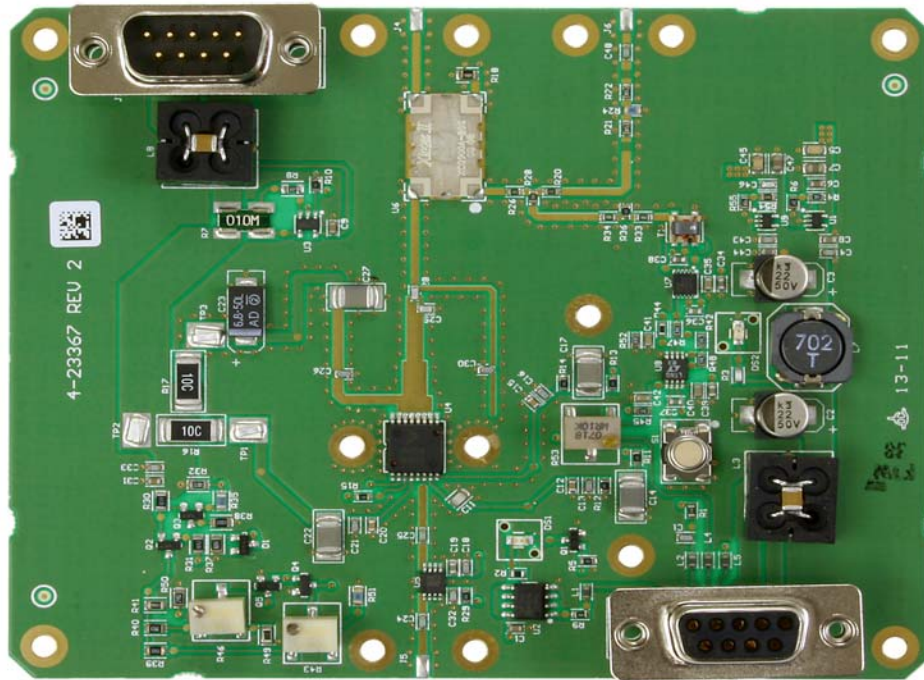


Control Board 3-23361 front view.  
(used in subassembly 3-23360)

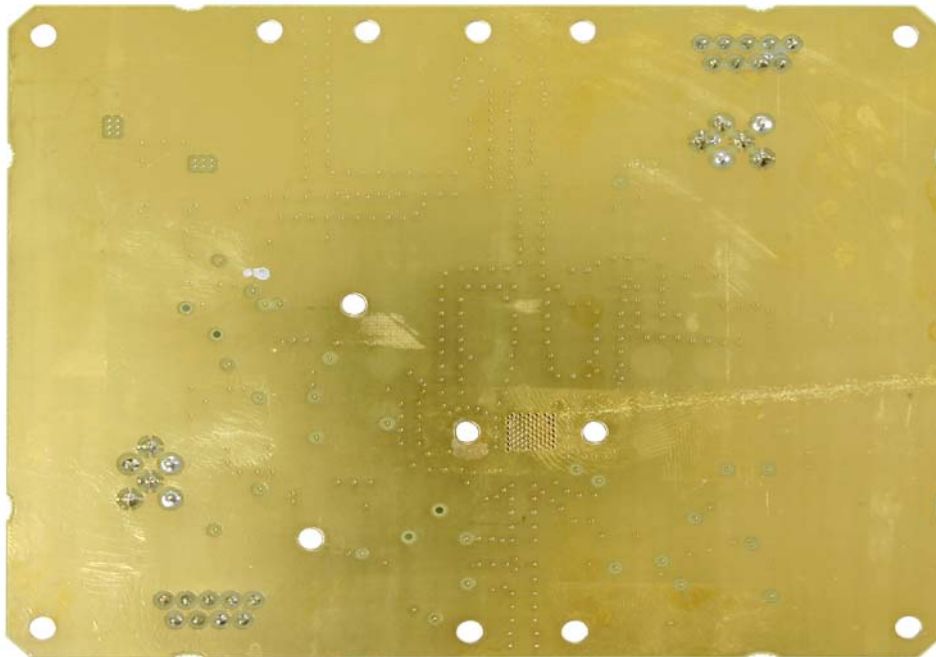


Control Board 3-23361 back view.  
(used in subassembly 3-23360)

Channelized Signal Booster (Model 613-8) - Internal Photos

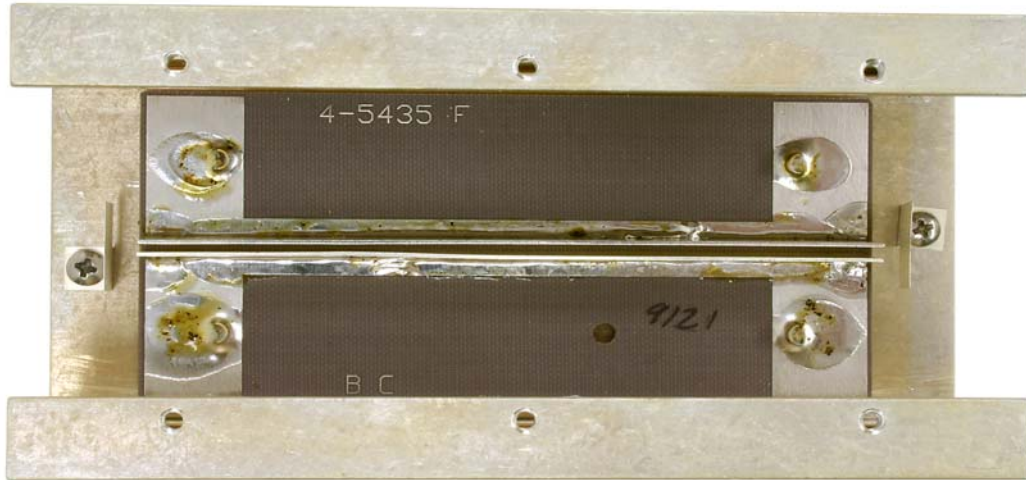


Power Amplifier Board 3-23366 front view.  
(used in subassembly 3-23912)



Power Amplifier Board 3-23366 back view.  
(used in subassembly 3-23912)

Channelized Signal Booster (Model 613-8) - Internal Photos



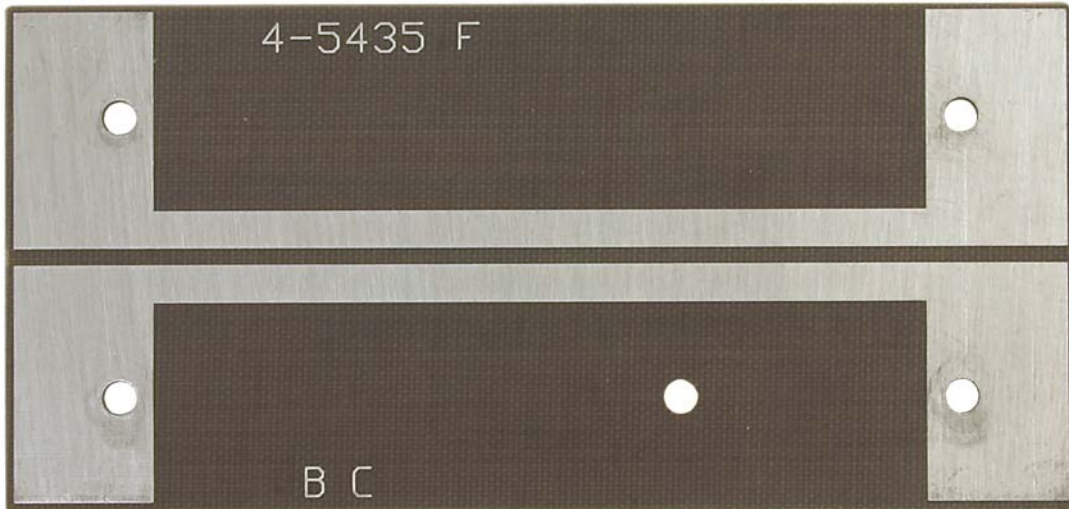
Directional Coupler 3-5688 internal view bottom.



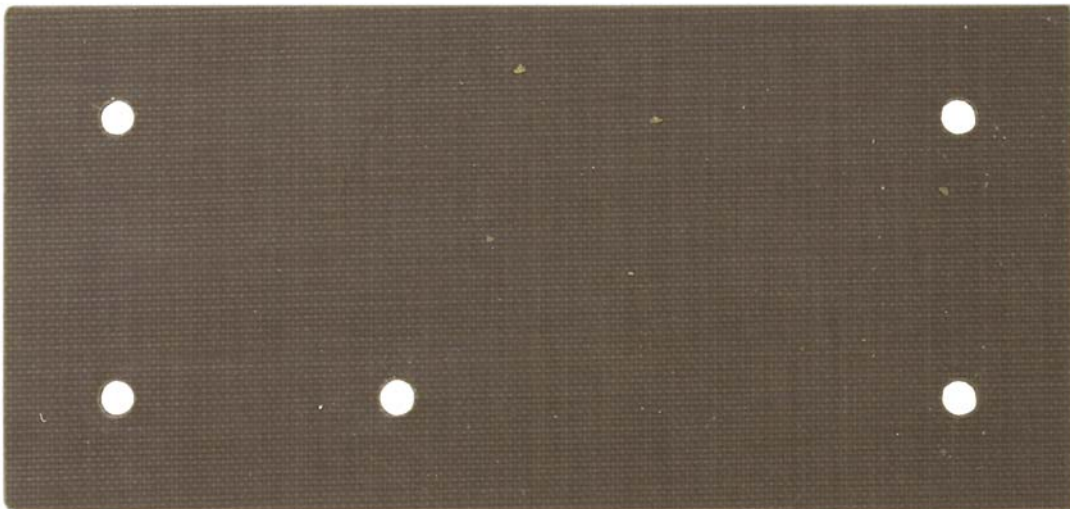
Directional Coupler 3-5688  
Internal view bottom left.



Channelized Signal Booster (Model 613-8) - Internal Photos



Directional coupler board 4-5435 front view.  
(used in subassembly 3-5688)



Directional coupler board 4-5435 rear view.  
(used in subassembly 3-5688)