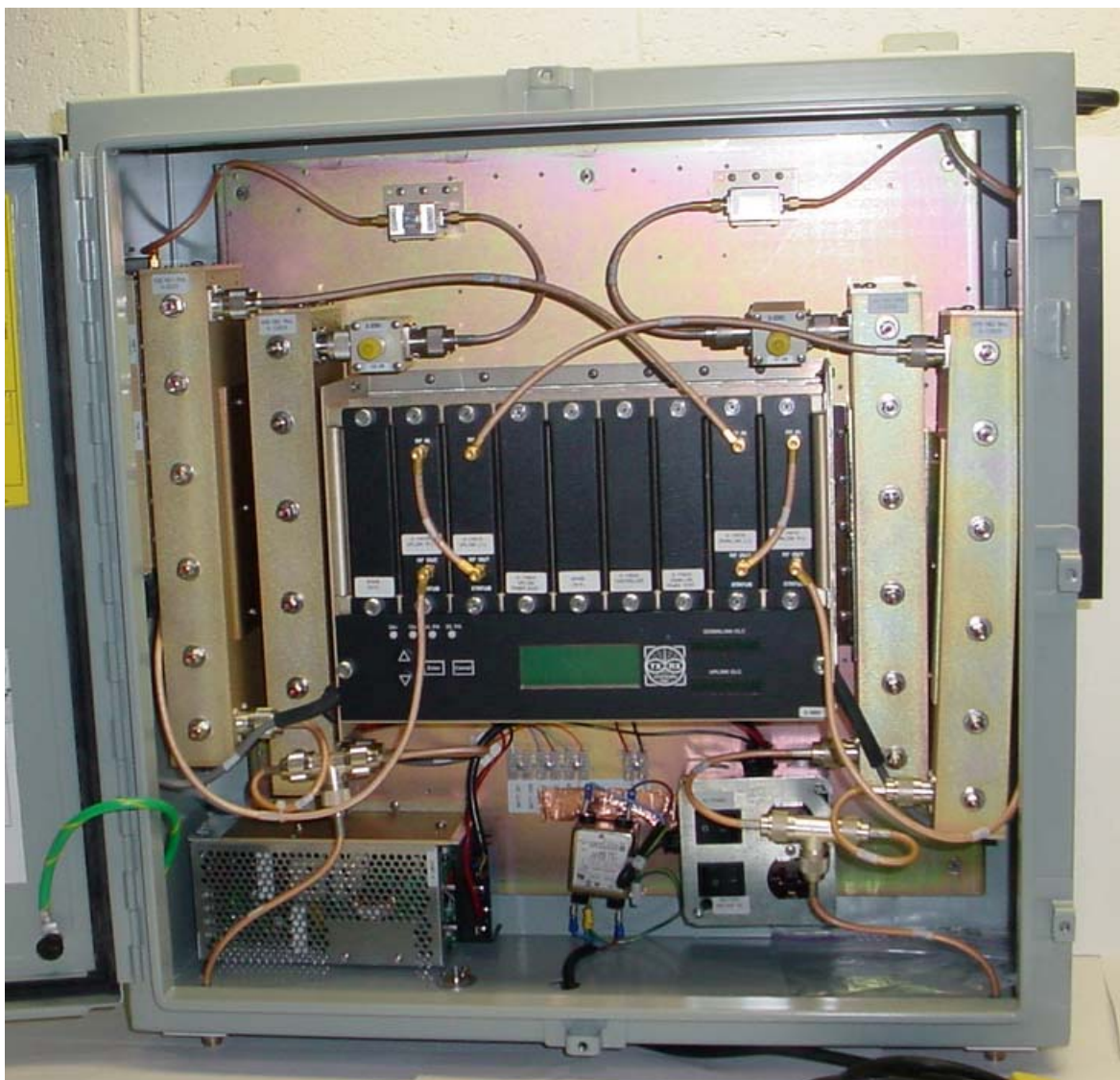


ANNEX 3 – INTERNAL PHOTOGRAPHS



TX RX Systems, Inc.
Signal Booster 2, Model 61-88-50-A06-G1
FCC ID: EZZ5PI618850
IC: 1940A-PI618850

ANNEX 3 – INTERNAL PHOTOGRAPHS



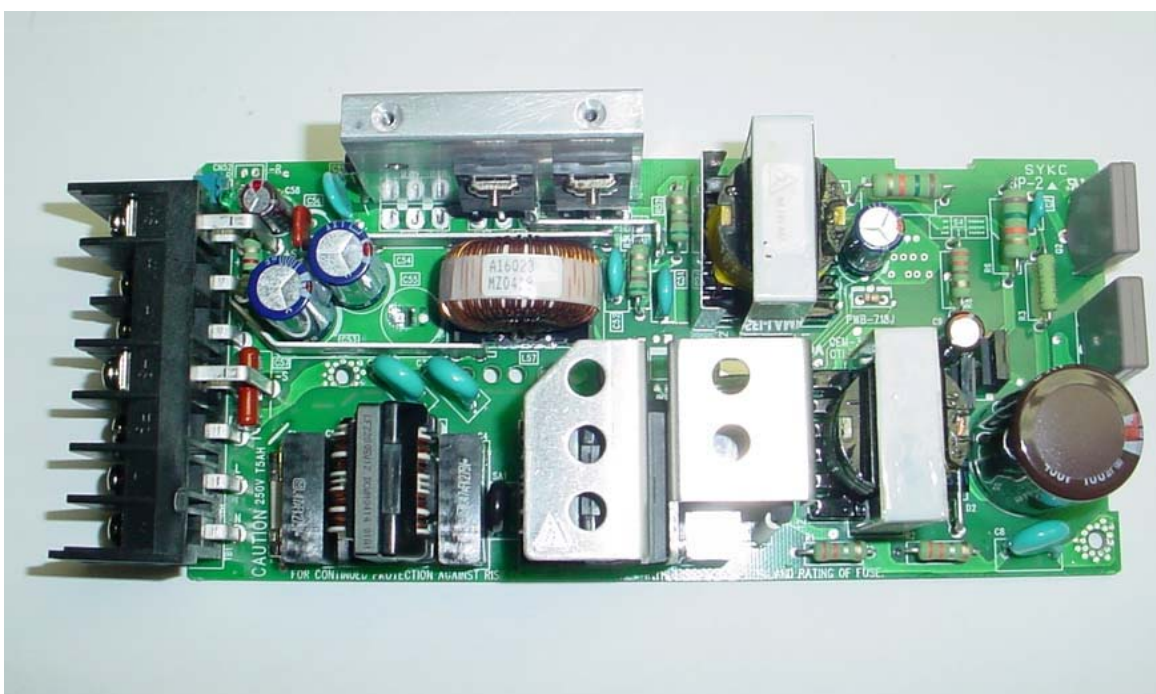
TX RX Systems, Inc.
Signal Booster 2, Model 61-88-50-A06-G1
FCC ID: EZZ5PI618850
IC: 1940A-PI618850

ANNEX 3 – INTERNAL PHOTOGRAPHS



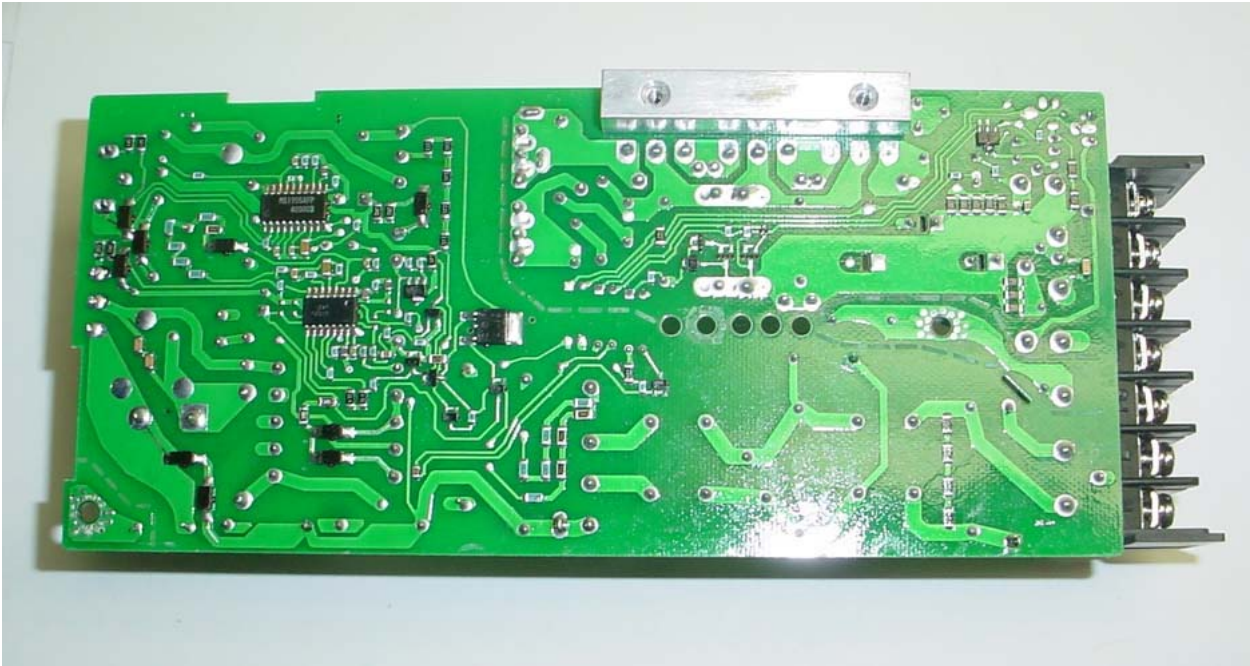
TX RX Systems, Inc.
Signal Booster 2, Model 61-88-50-A06-G1
FCC ID: EZZ5PI618850
IC: 1940A-PI618850

ANNEX 3 – INTERNAL PHOTOGRAPHS



TX RX Systems, Inc.
Signal Booster 2, Model 61-88-50-A06-G1
FCC ID: EZZ5PI618850
IC: 1940A-PI618850

ANNEX 3 – INTERNAL PHOTOGRAPHS



**TX RX Systems, Inc.
Signal Booster 2, Model 61-88-50-A06-G1
FCC ID: EZZ5PI618850
IC: 1940A-PI618850**

ANNEX 3 – INTERNAL PHOTOGRAPHS



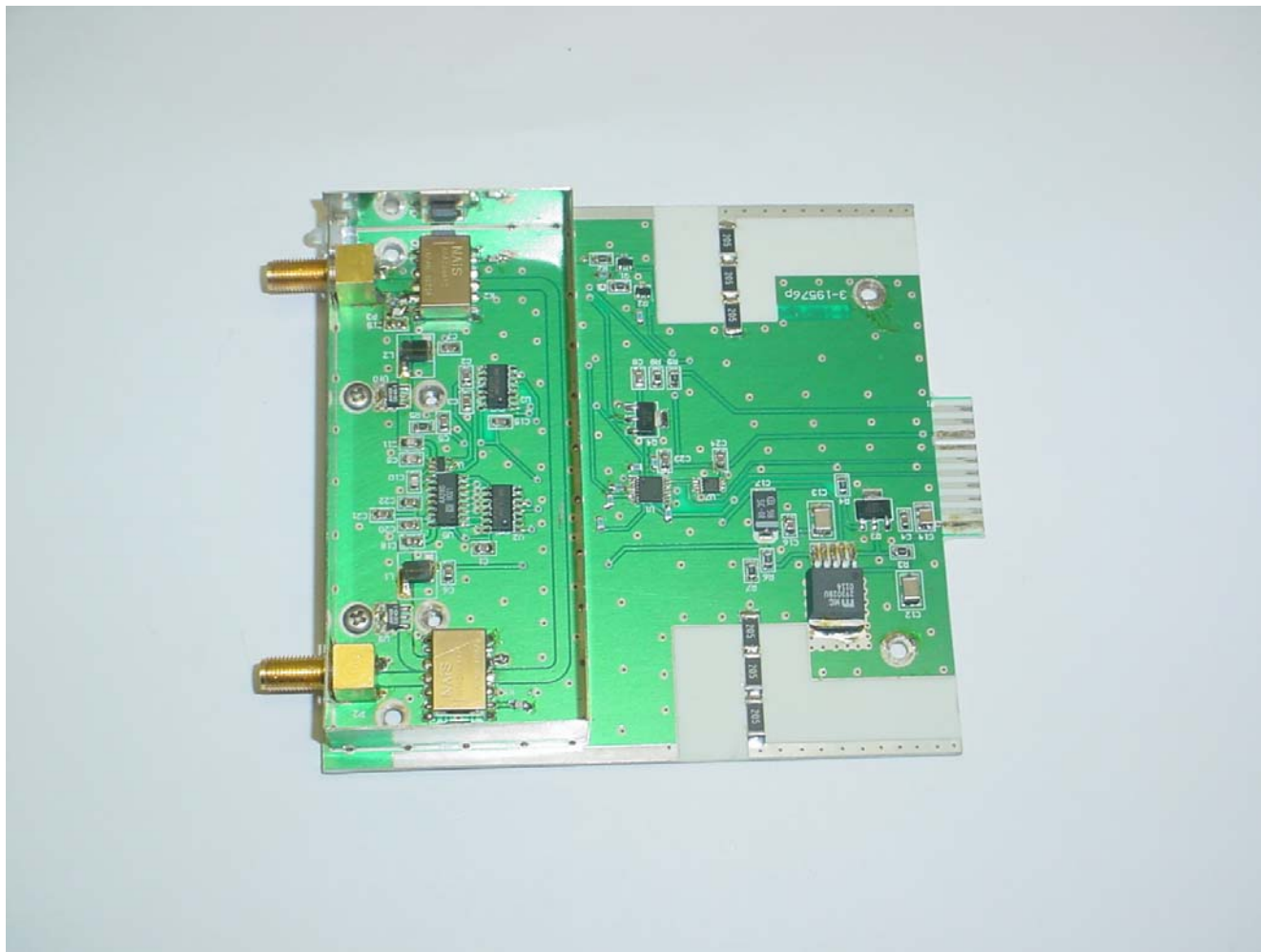
TX RX Systems, Inc.
Signal Booster 2, Model 61-88-50-A06-G1
FCC ID: EZZ5PI618850
IC: 1940A-PI618850

ANNEX 3 – INTERNAL PHOTOGRAPHS



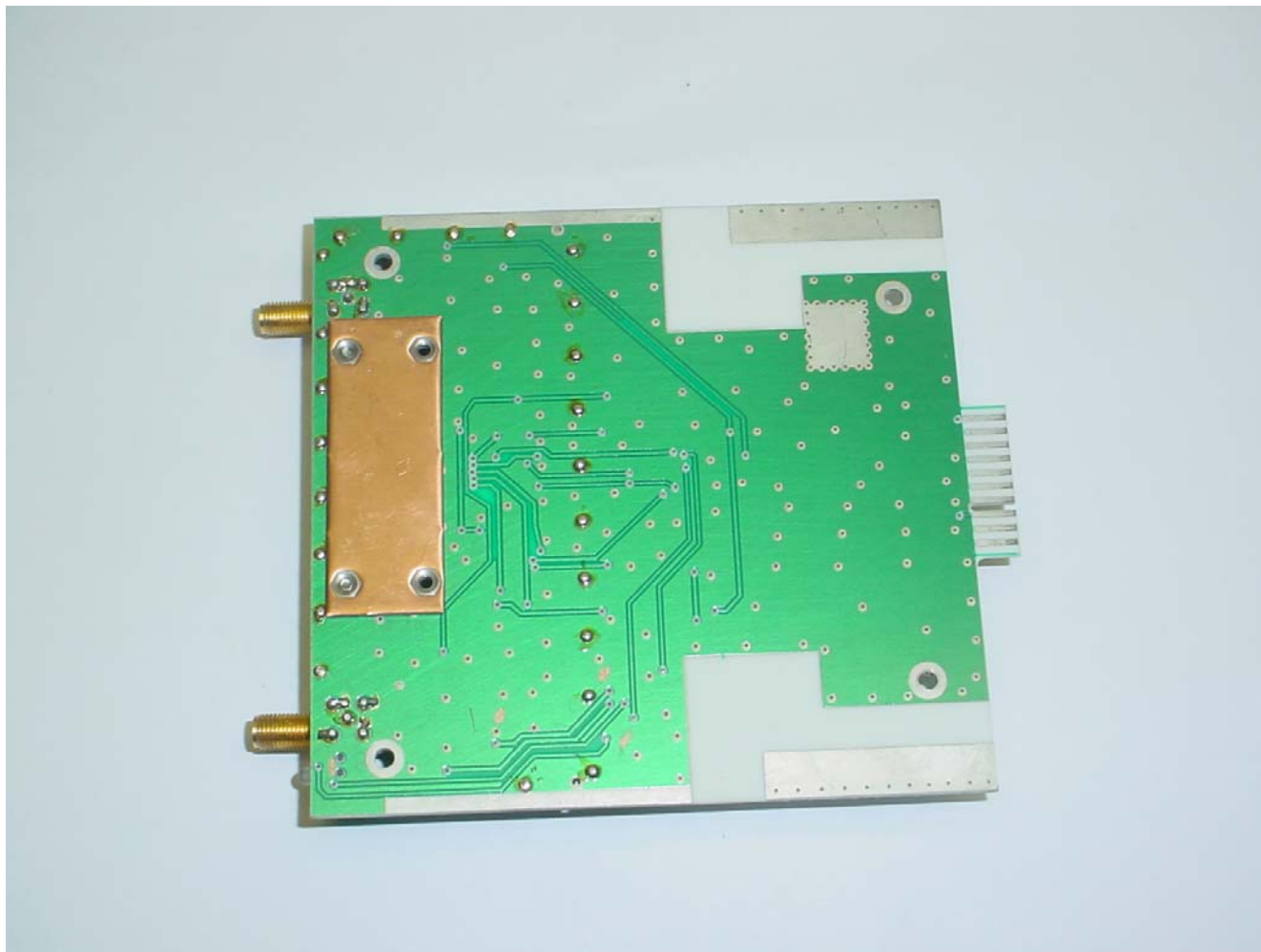
TX RX Systems, Inc.
Signal Booster 2, Model 61-88-50-A06-G1
FCC ID: EZZ5PI618850
IC: 1940A-PI618850

ANNEX 3 – INTERNAL PHOTOGRAPHS



TX RX Systems, Inc.
Signal Booster 2, Model 61-88-50-A06-G1
FCC ID: EZZ5PI618850
IC: 1940A-PI618850

ANNEX 3 – INTERNAL PHOTOGRAPHS

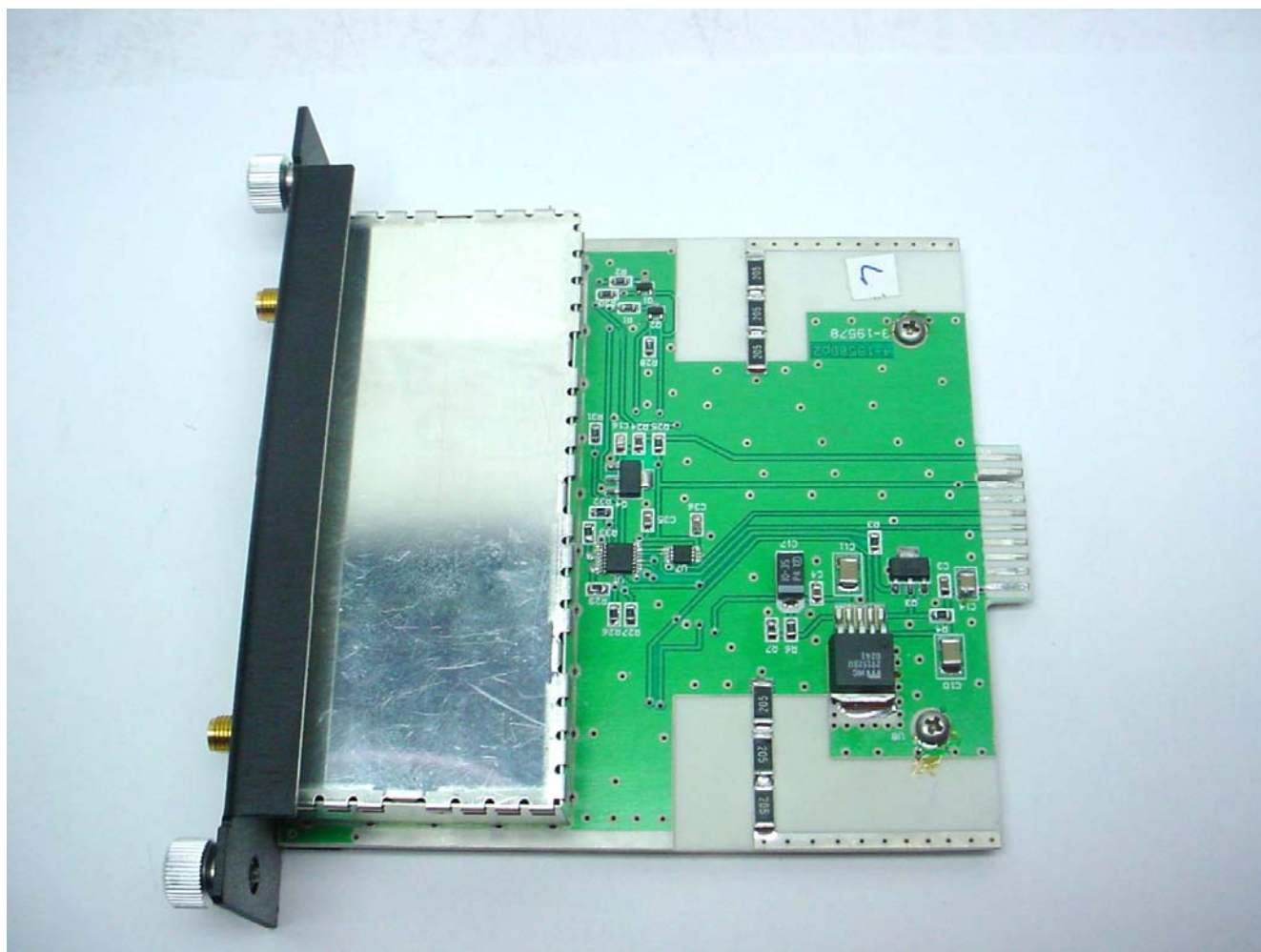


TX RX Systems, Inc.
Signal Booster 2, Model 61-88-50-A06-G1
FCC ID: EZZ5PI618850
IC: 1940A-PI618850

ANNEX 3 – INTERNAL PHOTOGRAPHS



ANNEX 3 – INTERNAL PHOTOGRAPHS



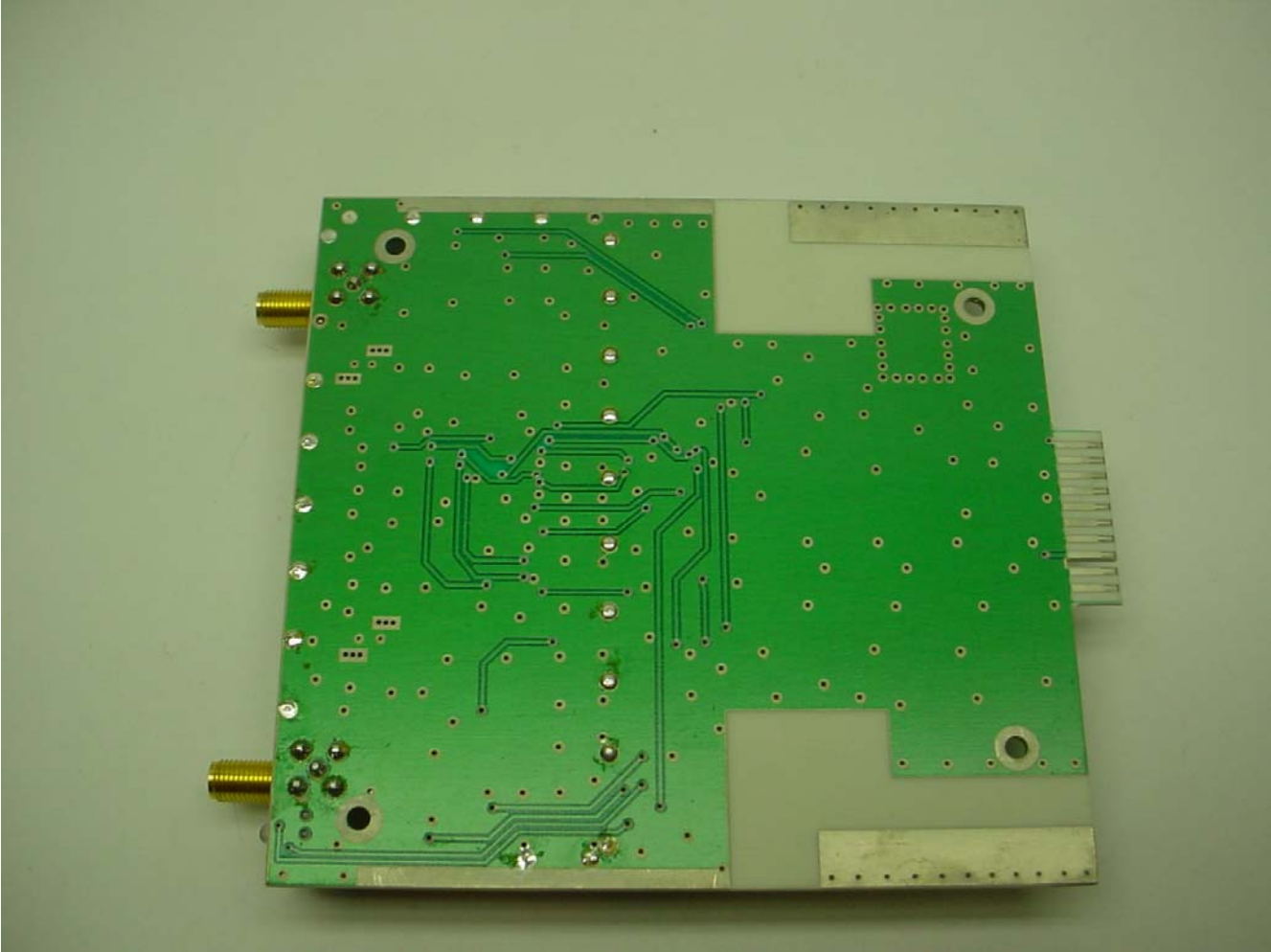
TX RX Systems, Inc.
Signal Booster 2, Model 61-88-50-A06-G1
FCC ID: EZZ5PI618850
IC: 1940A-PI618850

ANNEX 3 – INTERNAL PHOTOGRAPHS



**TX RX Systems, Inc.
Signal Booster 2, Model 61-88-50-A06-G1
FCC ID: EZZ5PI618850
IC: 1940A-PI618850**

ANNEX 3 – INTERNAL PHOTOGRAPHS



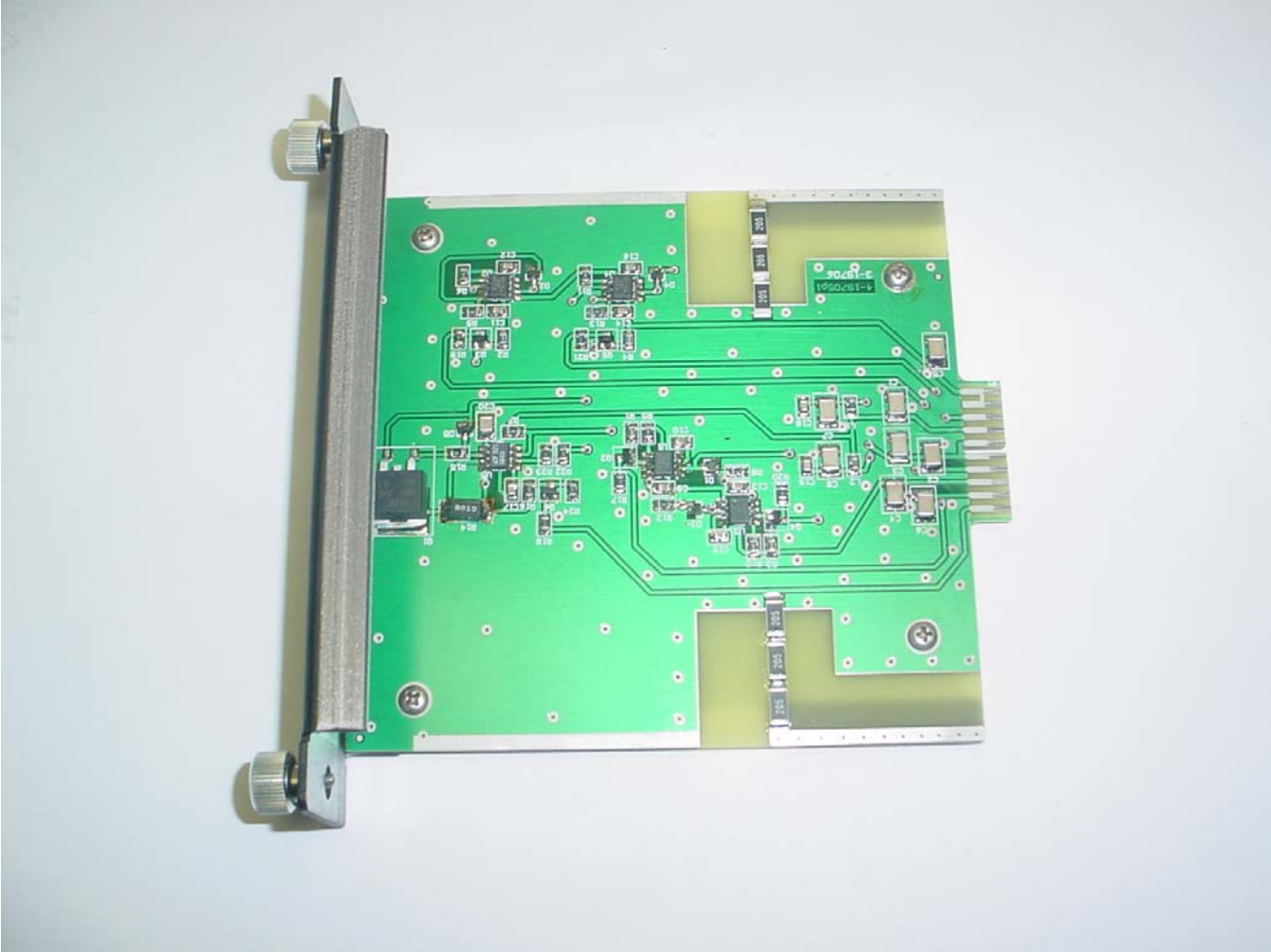
**TX RX Systems, Inc.
Signal Booster 2, Model 61-88-50-A06-G1
FCC ID: EZZ5PI618850
IC: 1940A-PI618850**

ANNEX 3 – INTERNAL PHOTOGRAPHS



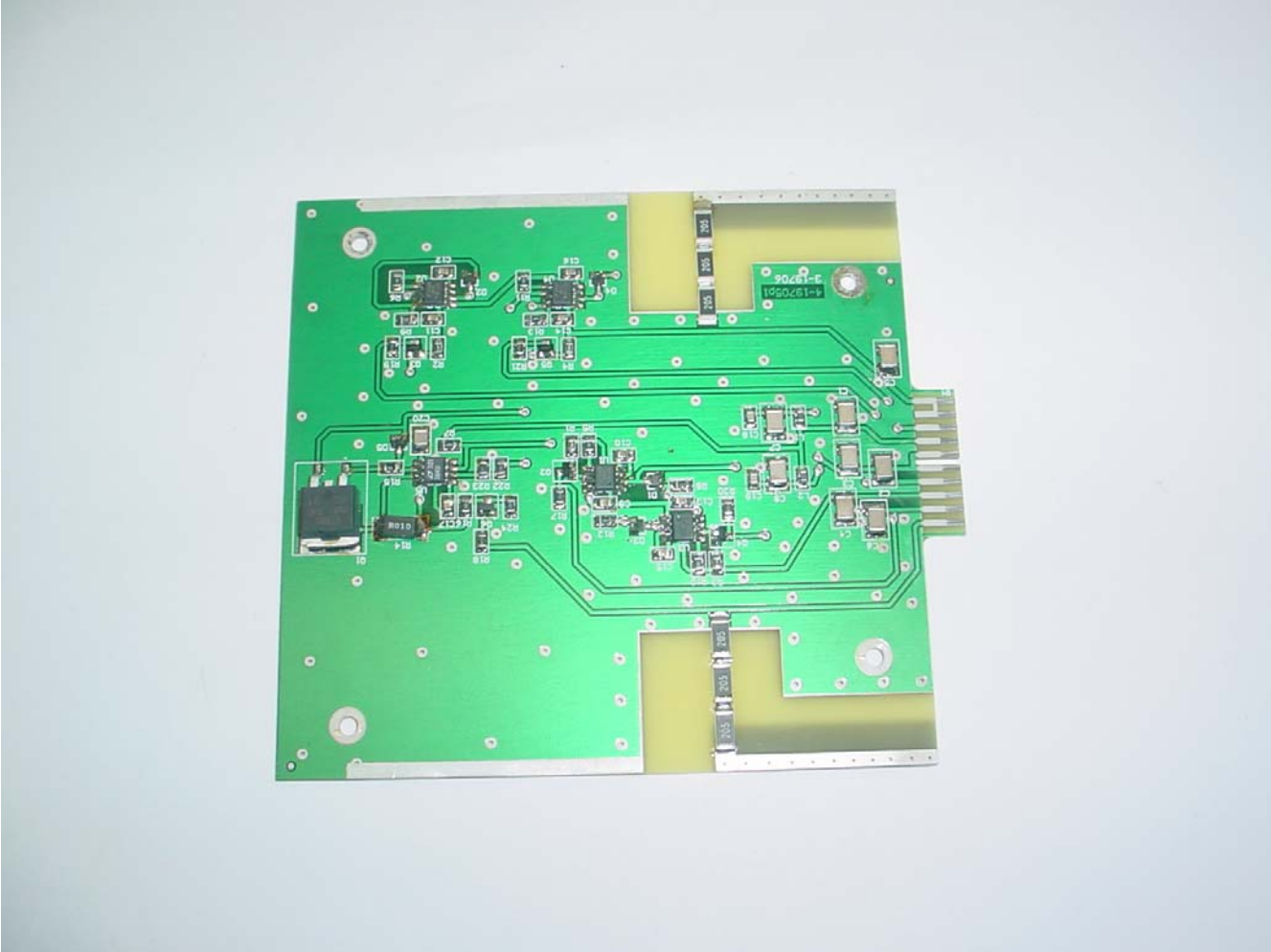
TX RX Systems, Inc.
Signal Booster 2, Model 61-88-50-A06-G1
FCC ID: EZZ5PI618850
IC: 1940A-PI618850

ANNEX 3 – INTERNAL PHOTOGRAPHS



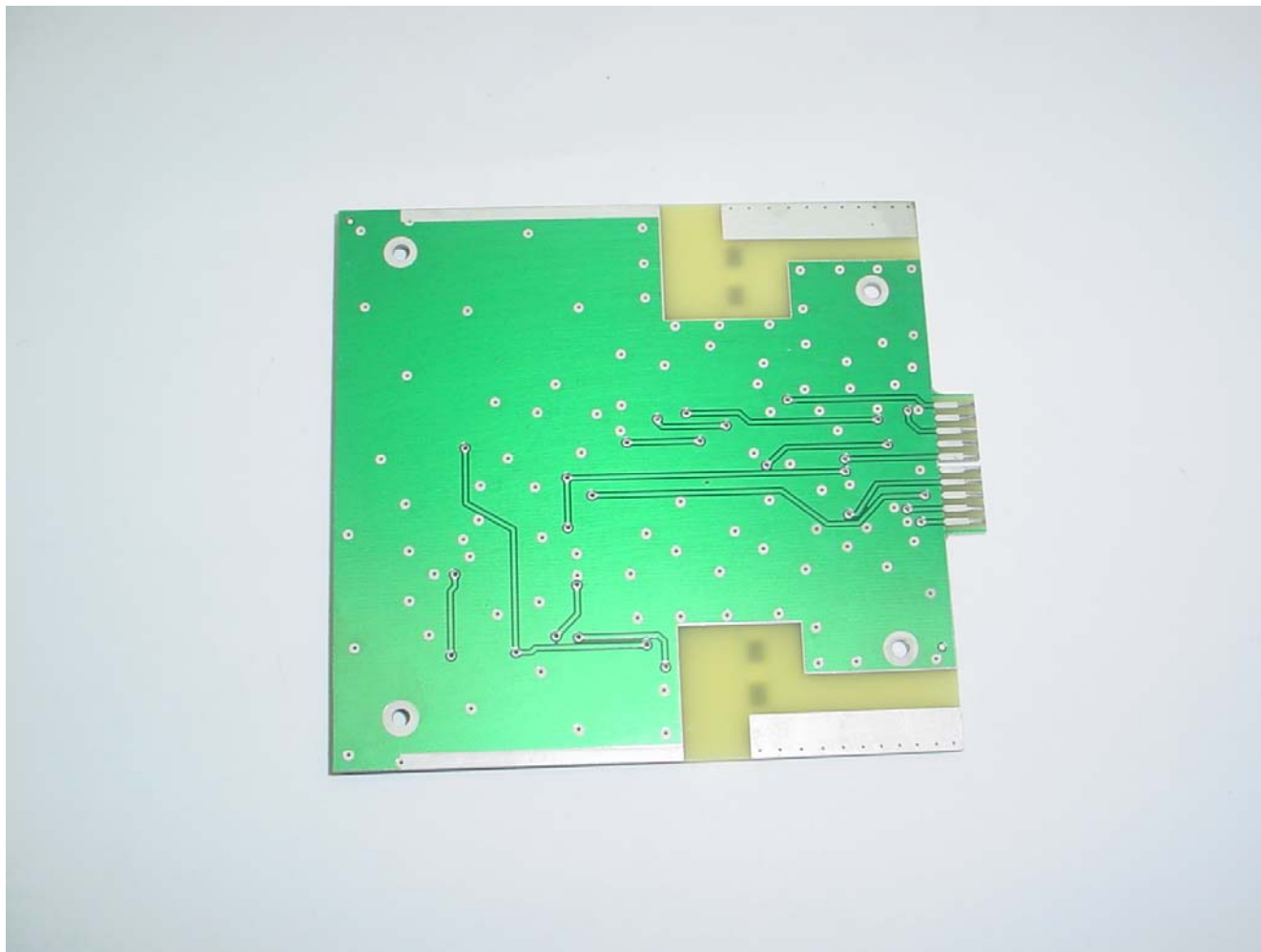
**TX RX Systems, Inc.
Signal Booster 2, Model 61-88-50-A06-G1
FCC ID: EZZ5PI618850
IC: 1940A-PI618850**

ANNEX 3 – INTERNAL PHOTOGRAPHS



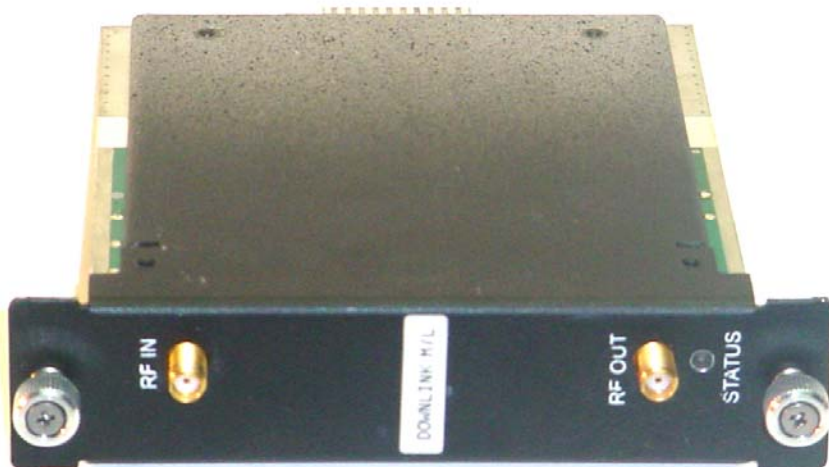
**TX RX Systems, Inc.
Signal Booster 2, Model 61-88-50-A06-G1
FCC ID: EZZ5PI618850
IC: 1940A-PI618850**

ANNEX 3 – INTERNAL PHOTOGRAPHS



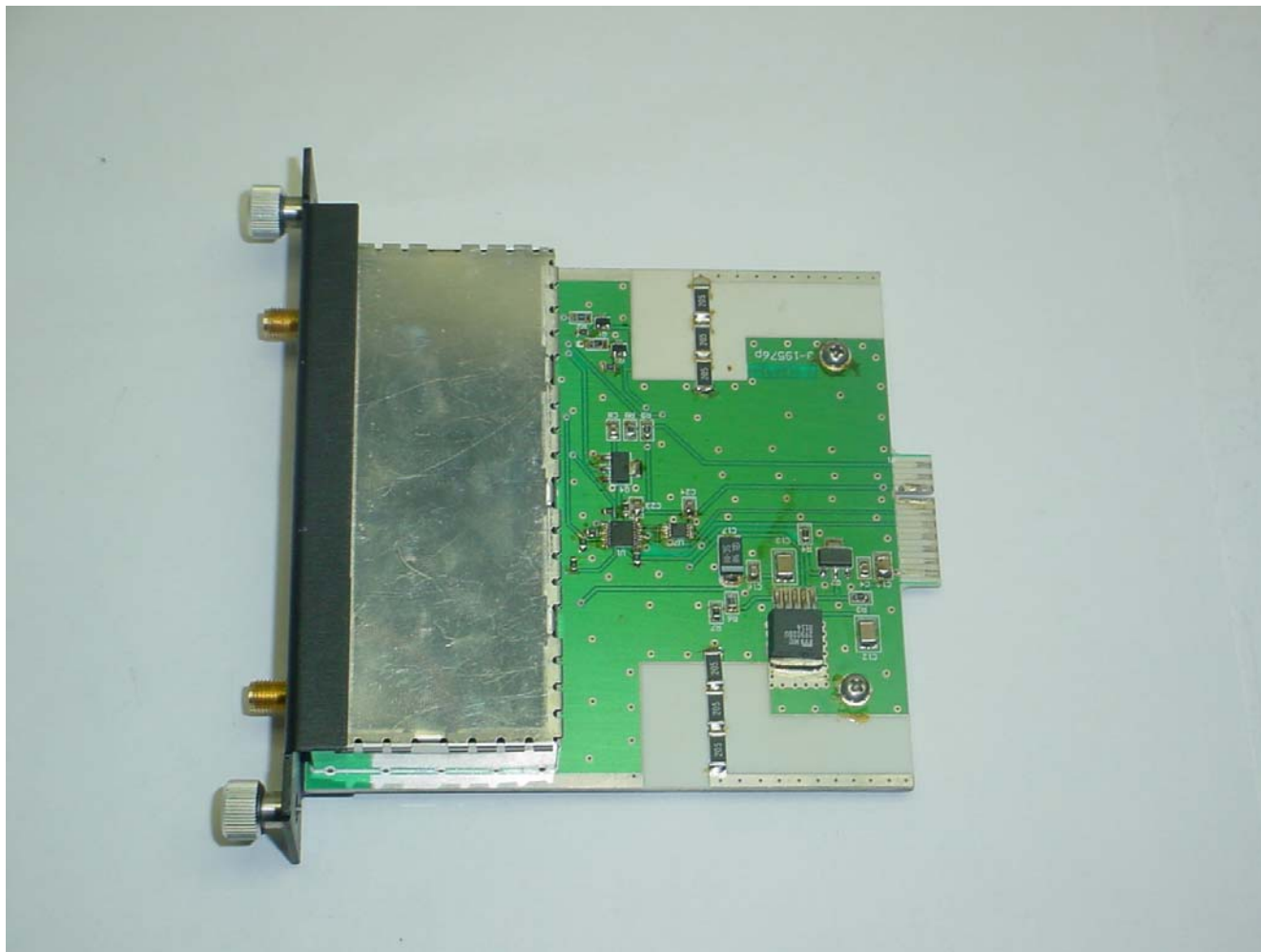
**TX RX Systems, Inc.
Signal Booster 2, Model 61-88-50-A06-G1
FCC ID: EZZ5PI618850
IC: 1940A-PI618850**

ANNEX 3 – INTERNAL PHOTOGRAPHS



TX RX Systems, Inc.
Signal Booster 2, Model 61-88-50-A06-G1
FCC ID: EZZ5PI618850
IC: 1940A-PI618850

ANNEX 3 – INTERNAL PHOTOGRAPHS



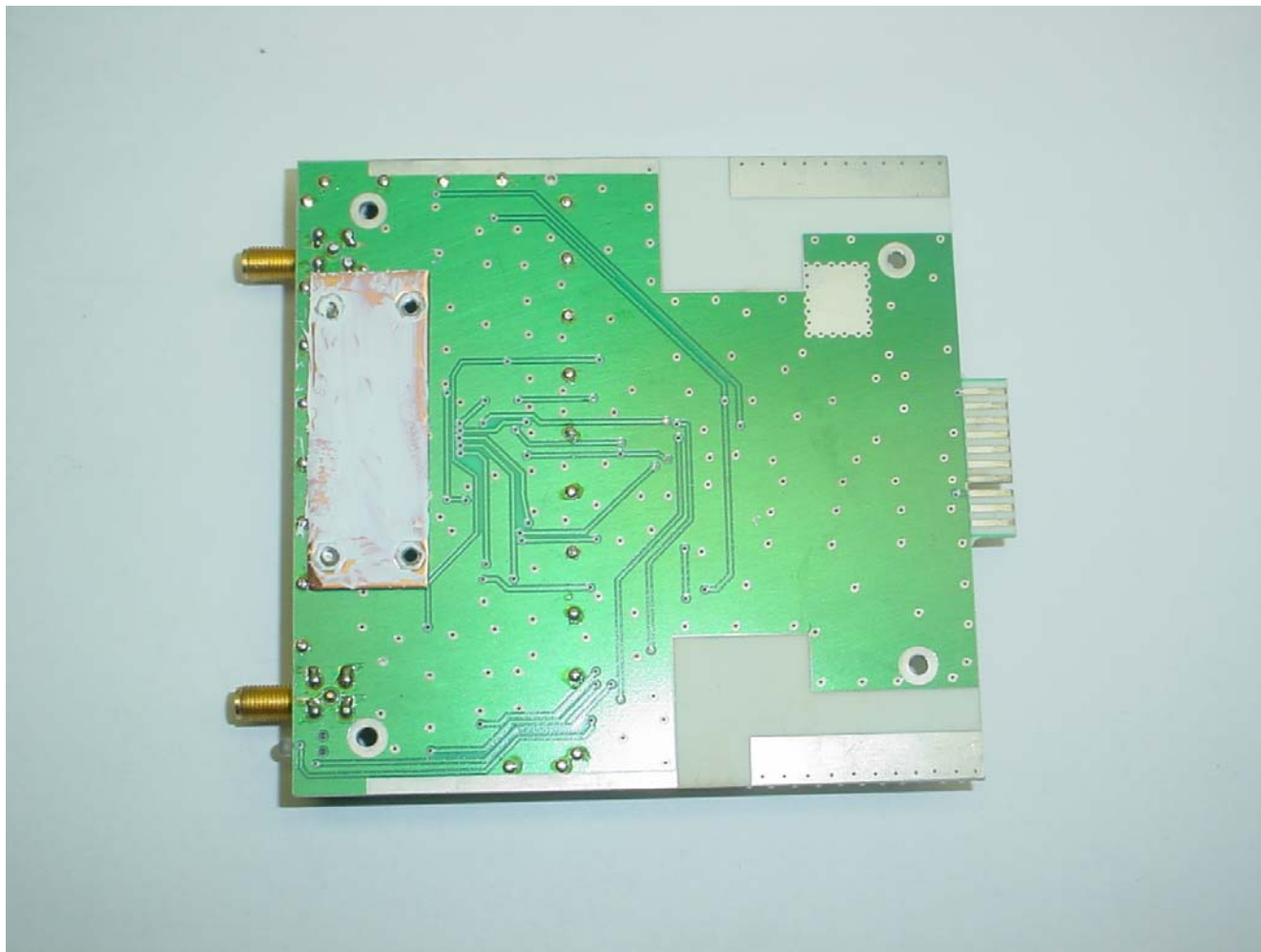
TX RX Systems, Inc.
Signal Booster 2, Model 61-88-50-A06-G1
FCC ID: EZZ5PI618850
IC: 1940A-PI618850

ANNEX 3 – INTERNAL PHOTOGRAPHS



TX RX Systems, Inc.
Signal Booster 2, Model 61-88-50-A06-G1
FCC ID: EZZ5PI618850
IC: 1940A-PI618850

ANNEX 3 – INTERNAL PHOTOGRAPHS



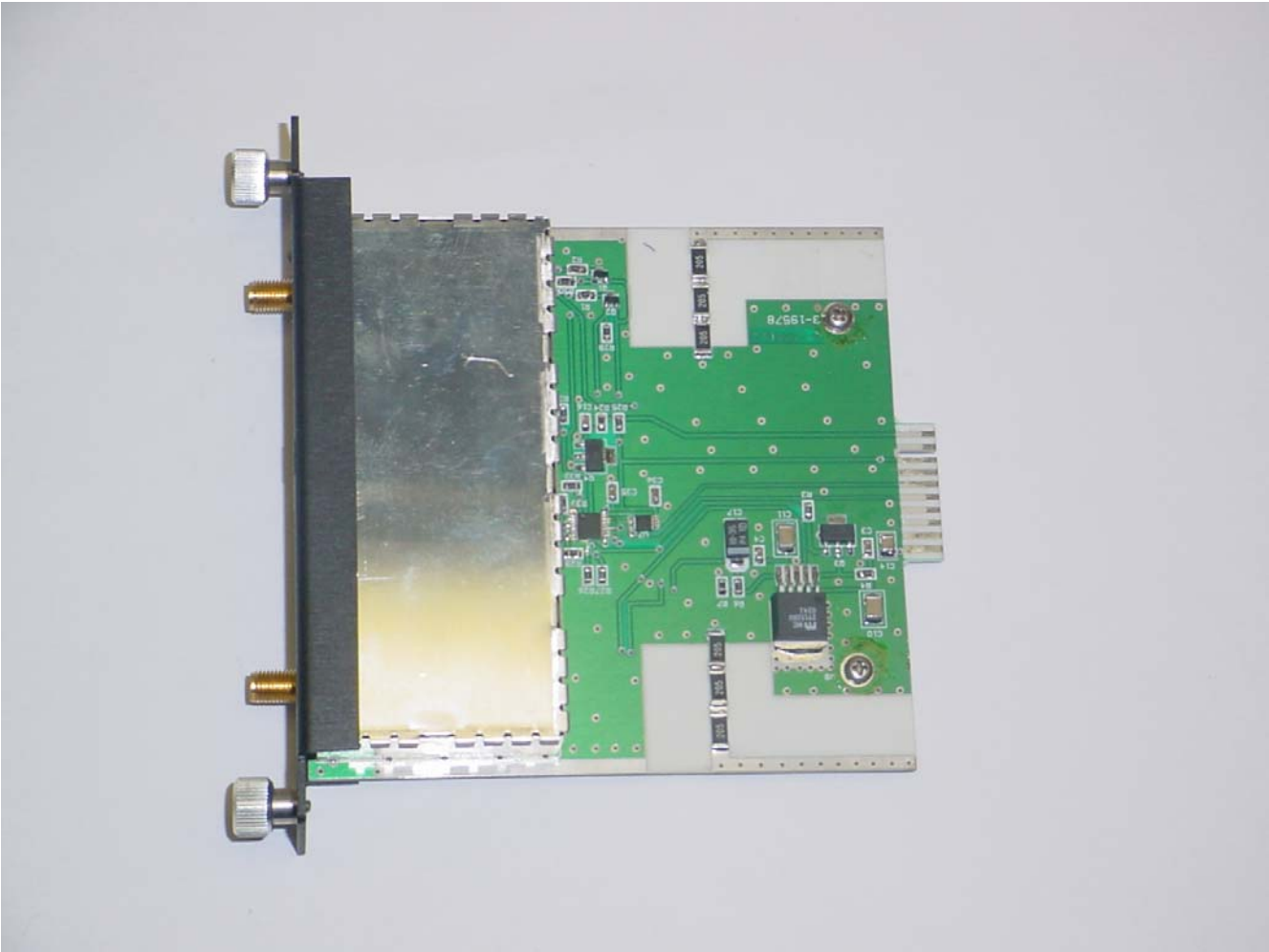
TX RX Systems, Inc.
Signal Booster 2, Model 61-88-50-A06-G1
FCC ID: EZZ5PI618850
IC: 1940A-PI618850

ANNEX 3 – INTERNAL PHOTOGRAPHS



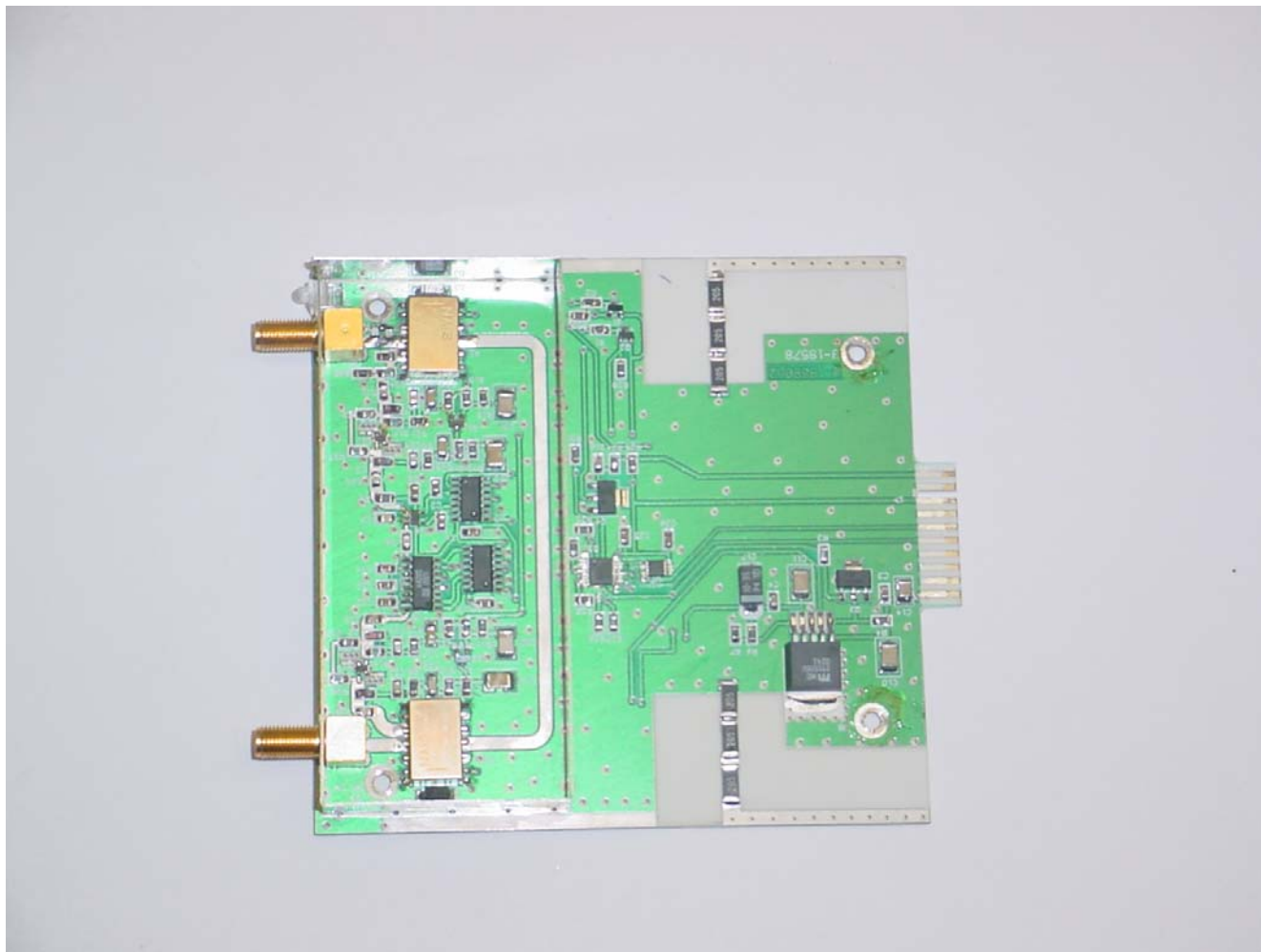
TX RX Systems, Inc.
Signal Booster 2, Model 61-88-50-A06-G1
FCC ID: EZZ5PI618850
IC: 1940A-PI618850

ANNEX 3 – INTERNAL PHOTOGRAPHS



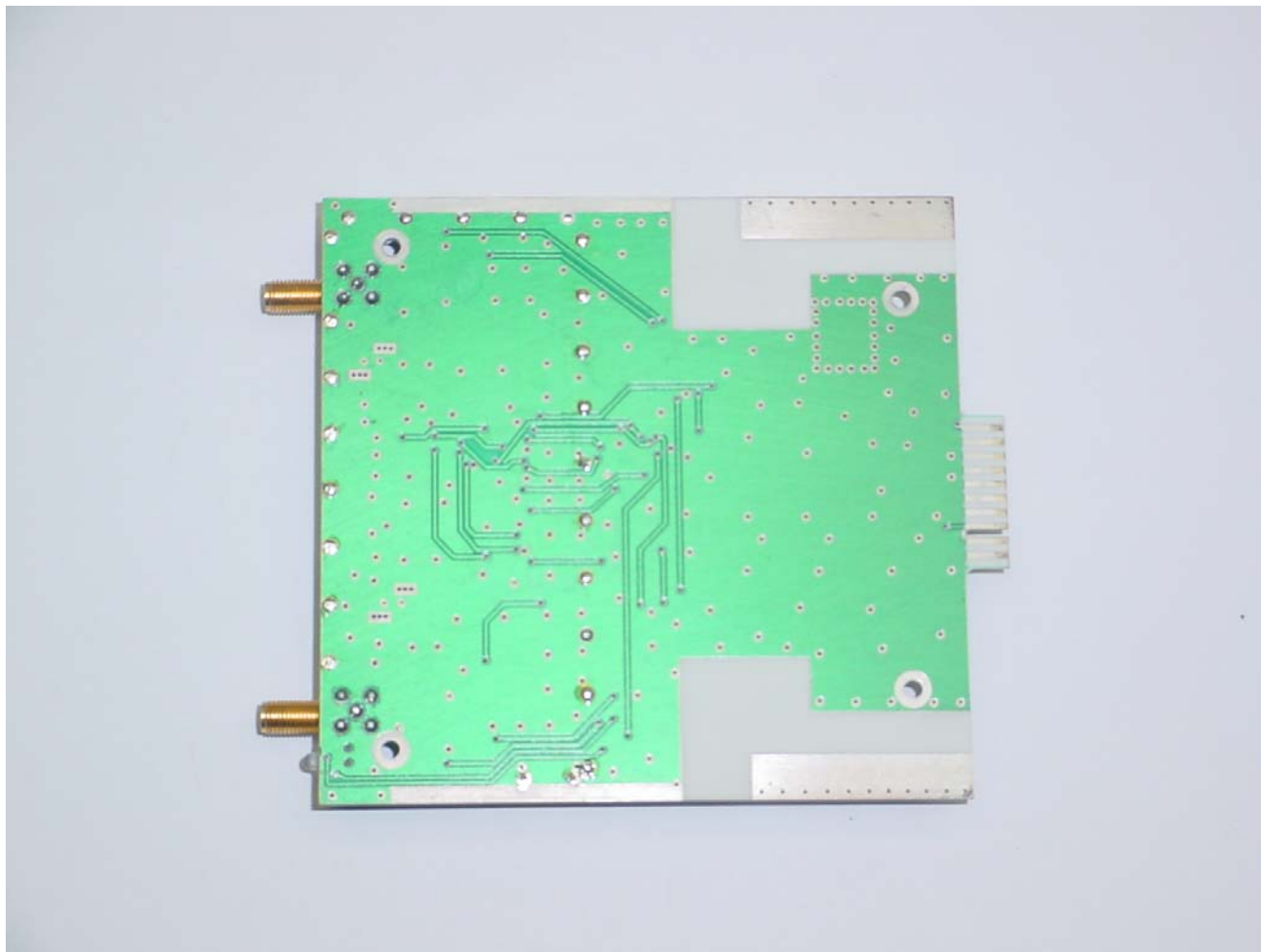
**TX RX Systems, Inc.
Signal Booster 2, Model 61-88-50-A06-G1
FCC ID: EZZ5PI618850
IC: 1940A-PI618850**

ANNEX 3 – INTERNAL PHOTOGRAPHS



TX RX Systems, Inc.
Signal Booster 2, Model 61-88-50-A06-G1
FCC ID: EZZ5PI618850
IC: 1940A-PI618850

ANNEX 3 – INTERNAL PHOTOGRAPHS



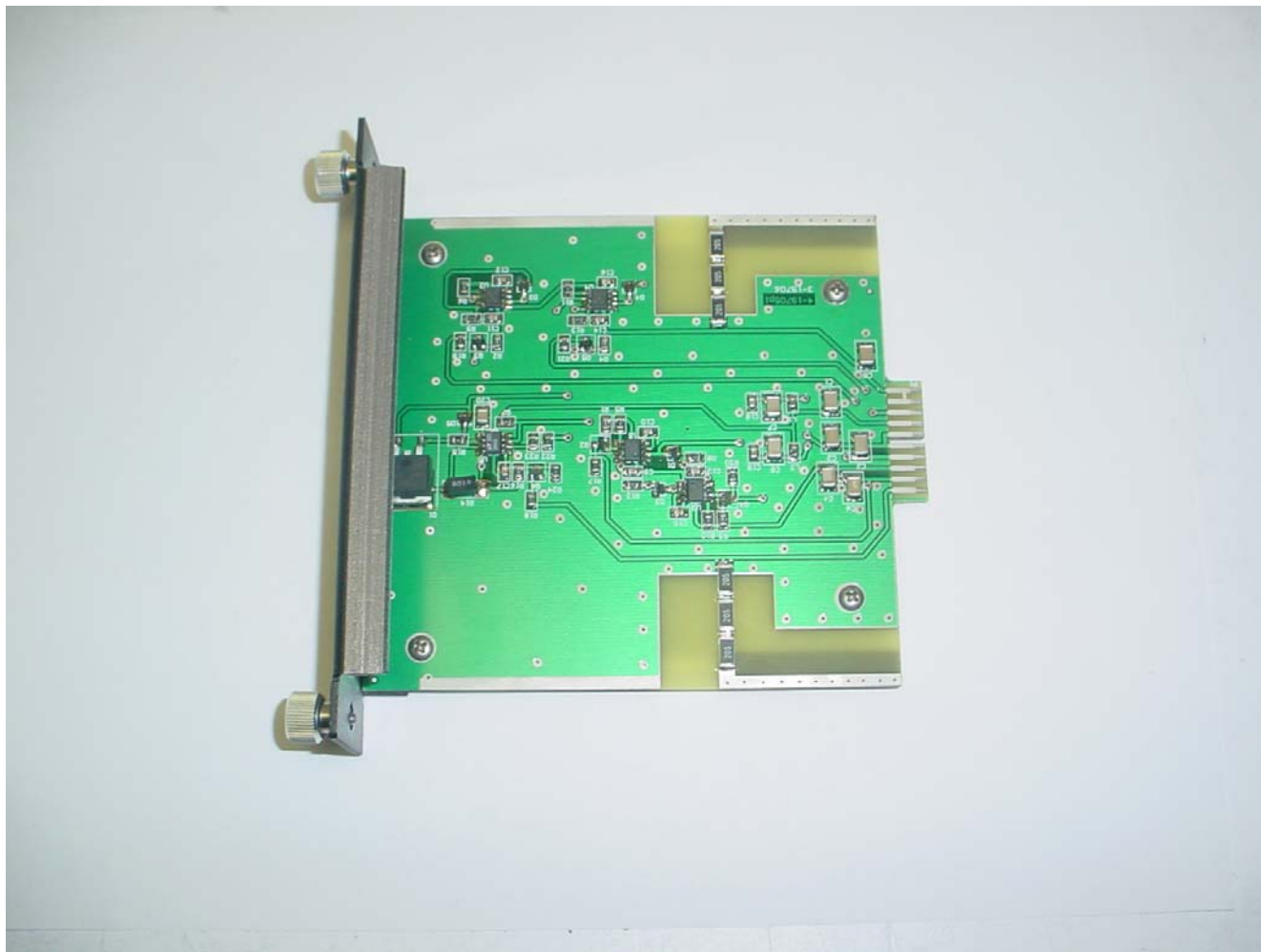
TX RX Systems, Inc.
Signal Booster 2, Model 61-88-50-A06-G1
FCC ID: EZZ5PI618850
IC: 1940A-PI618850

ANNEX 3 – INTERNAL PHOTOGRAPHS



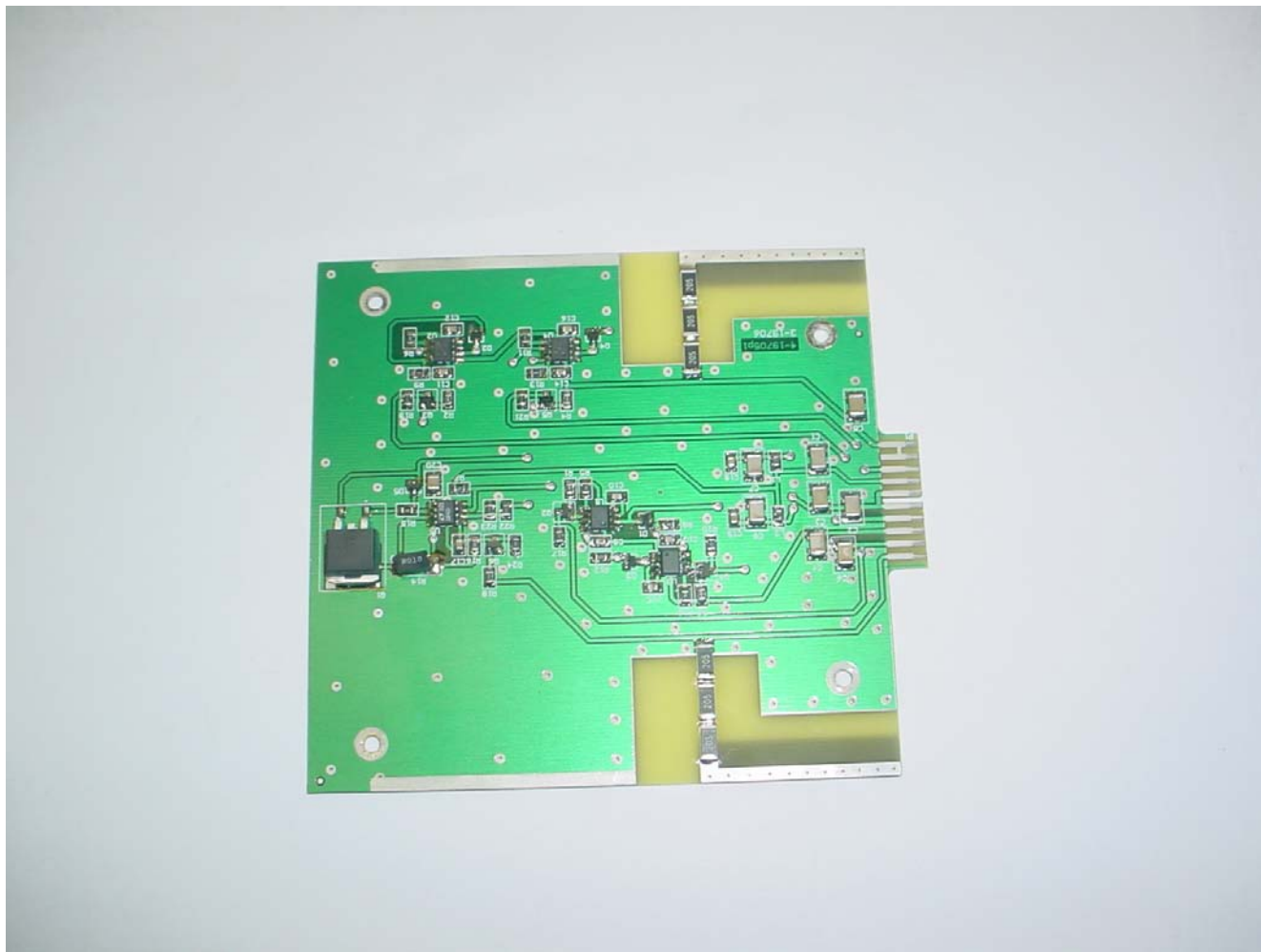
**TX RX Systems, Inc.
Signal Booster 2, Model 61-88-50-A06-G1
FCC ID: EZZ5PI618850
IC: 1940A-PI618850**

ANNEX 3 – INTERNAL PHOTOGRAPHS



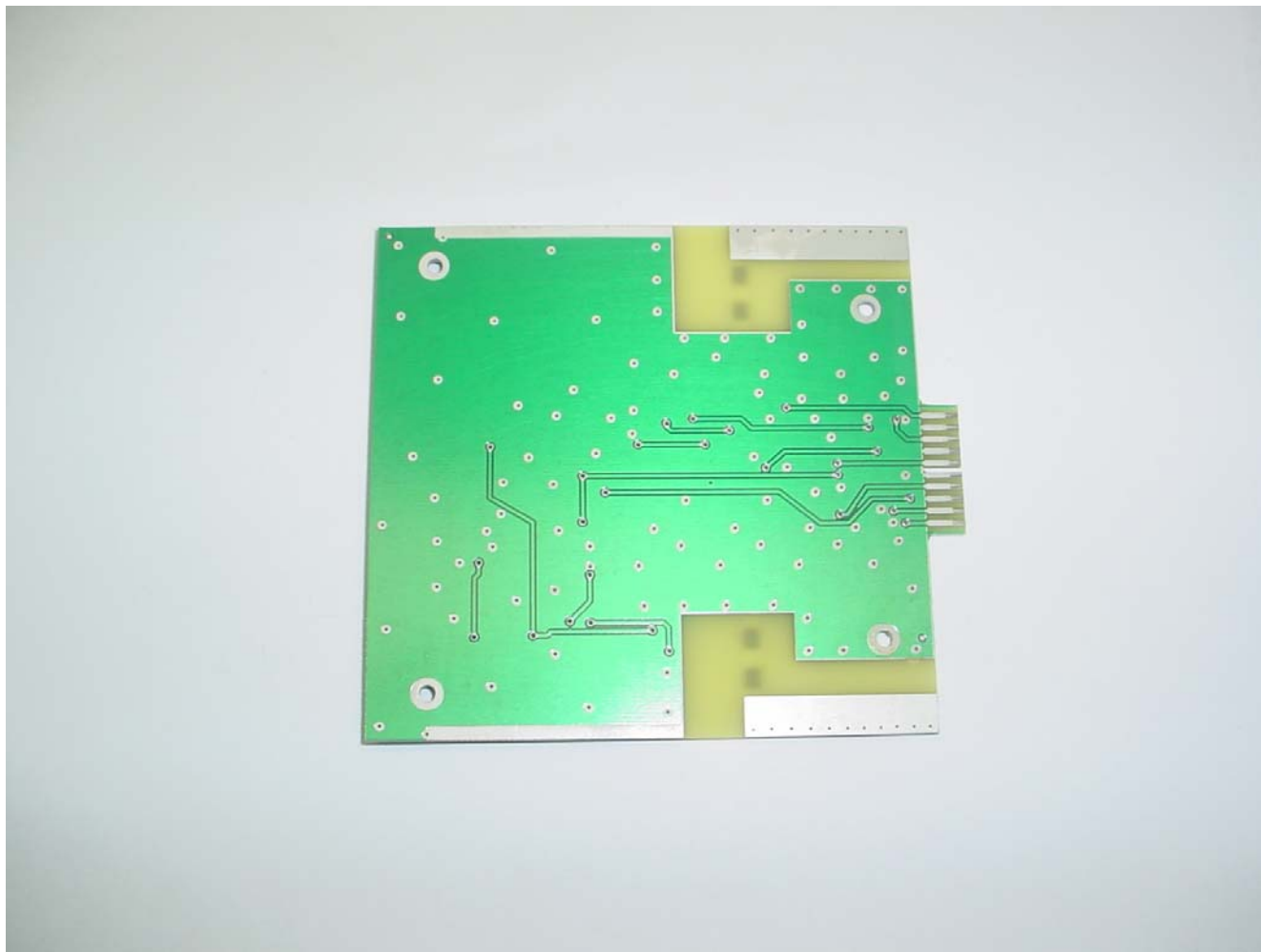
TX RX Systems, Inc.
Signal Booster 2, Model 61-88-50-A06-G1
FCC ID: EZZ5PI618850
IC: 1940A-PI618850

ANNEX 3 – INTERNAL PHOTOGRAPHS



TX RX Systems, Inc.
Signal Booster 2, Model 61-88-50-A06-G1
FCC ID: EZZ5PI618850
IC: 1940A-PI618850

ANNEX 3 – INTERNAL PHOTOGRAPHS



**TX RX Systems, Inc.
Signal Booster 2, Model 61-88-50-A06-G1
FCC ID: EZZ5PI618850
IC: 1940A-PI618850**

ANNEX 3 – INTERNAL PHOTOGRAPHS



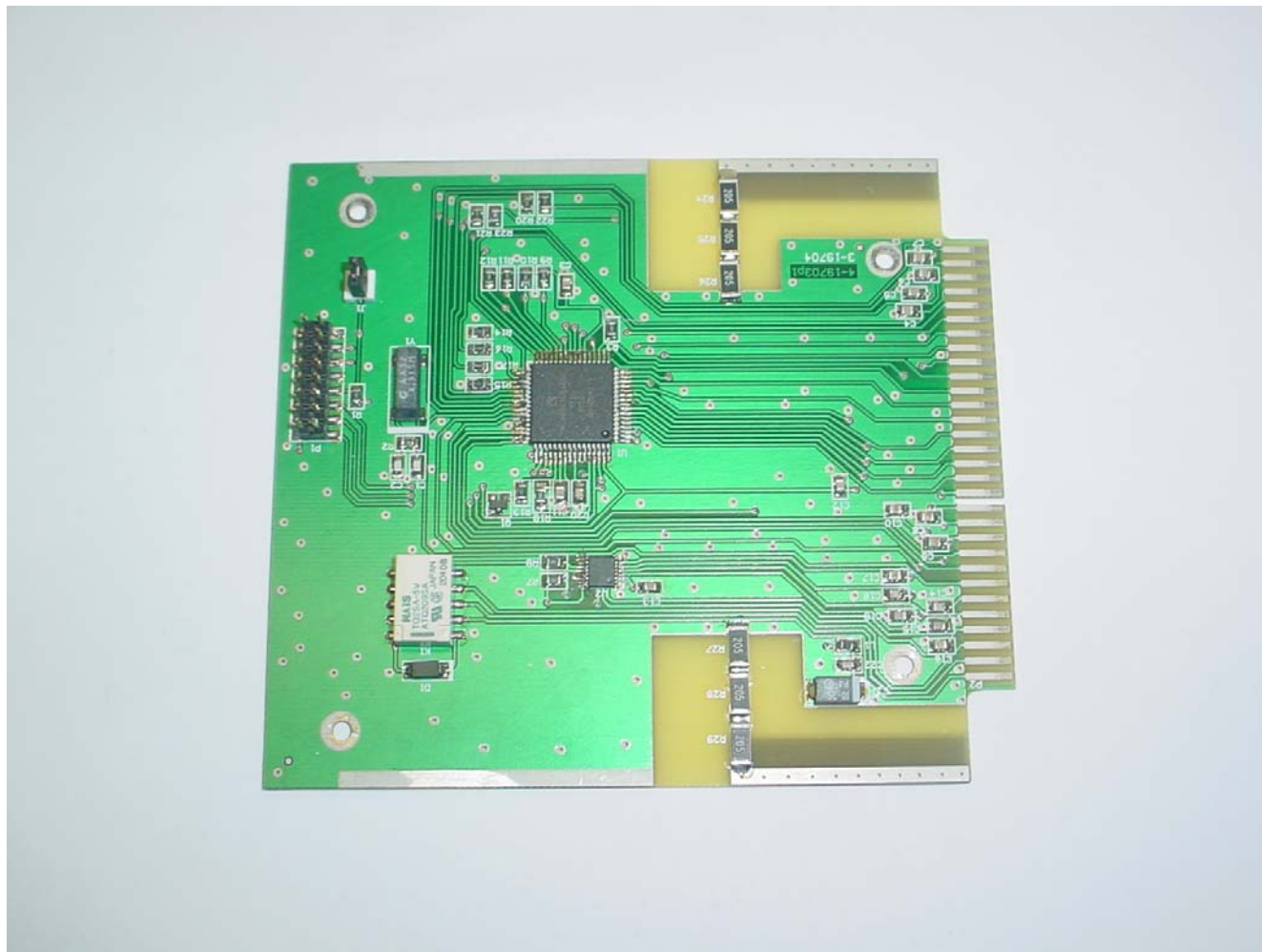
**TX RX Systems, Inc.
Signal Booster 2, Model 61-88-50-A06-G1
FCC ID: EZZ5PI618850
IC: 1940A-PI618850**

ANNEX 3 – INTERNAL PHOTOGRAPHS



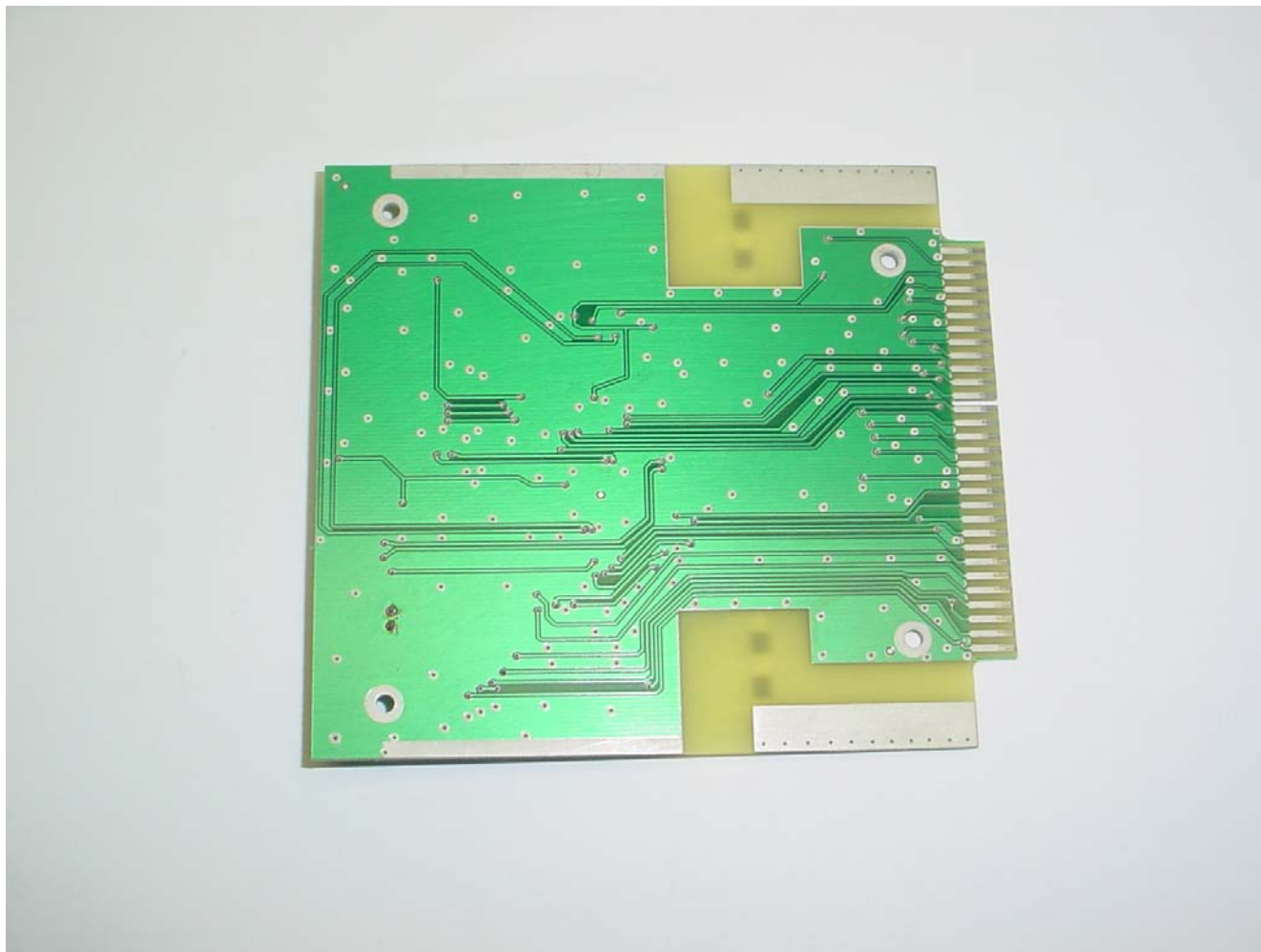
TX RX Systems, Inc.
Signal Booster 2, Model 61-88-50-A06-G1
FCC ID: EZZ5PI618850
IC: 1940A-PI618850

ANNEX 3 – INTERNAL PHOTOGRAPHS



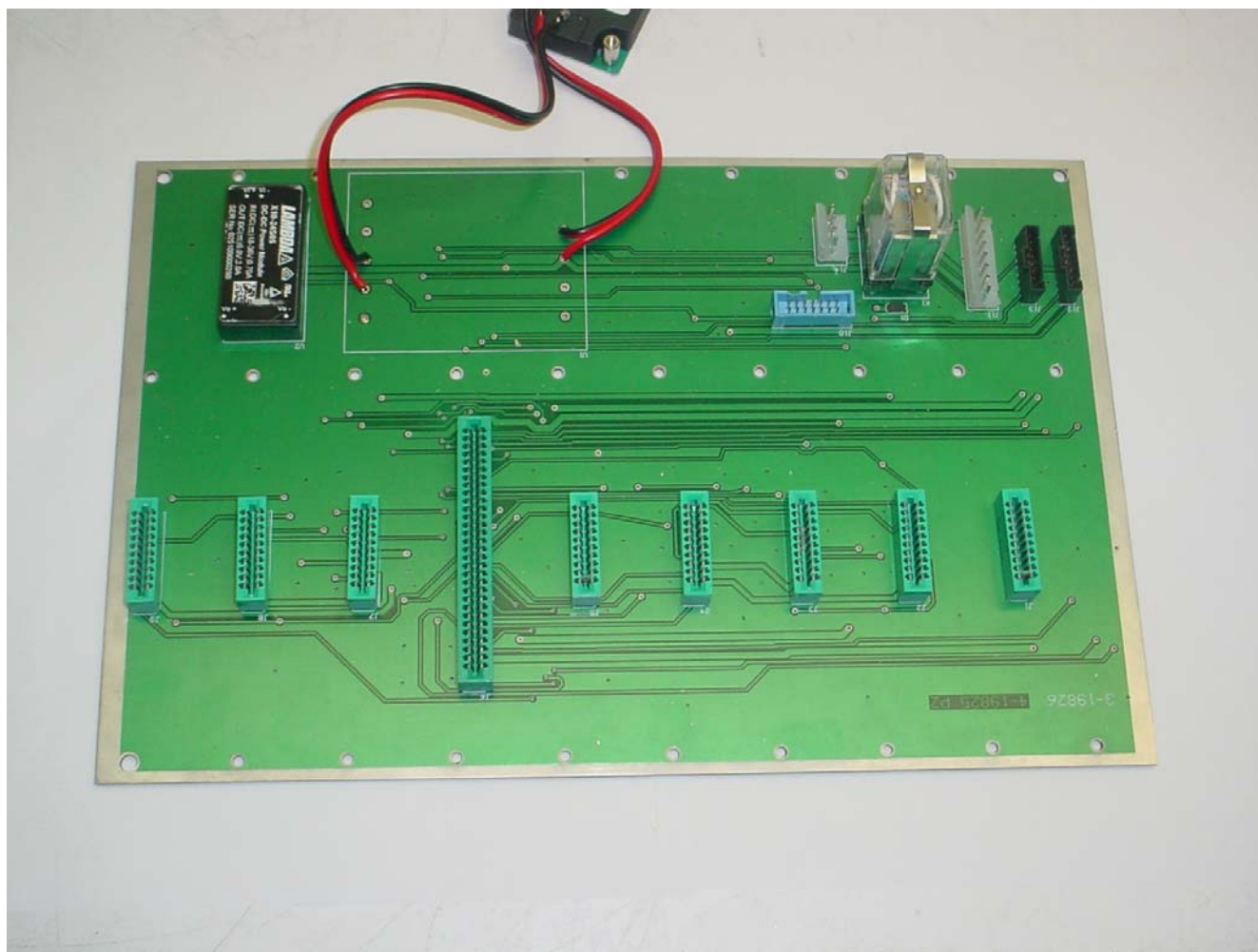
TX RX Systems, Inc.
Signal Booster 2, Model 61-88-50-A06-G1
FCC ID: EZZ5PI618850
IC: 1940A-PI618850

ANNEX 3 – INTERNAL PHOTOGRAPHS



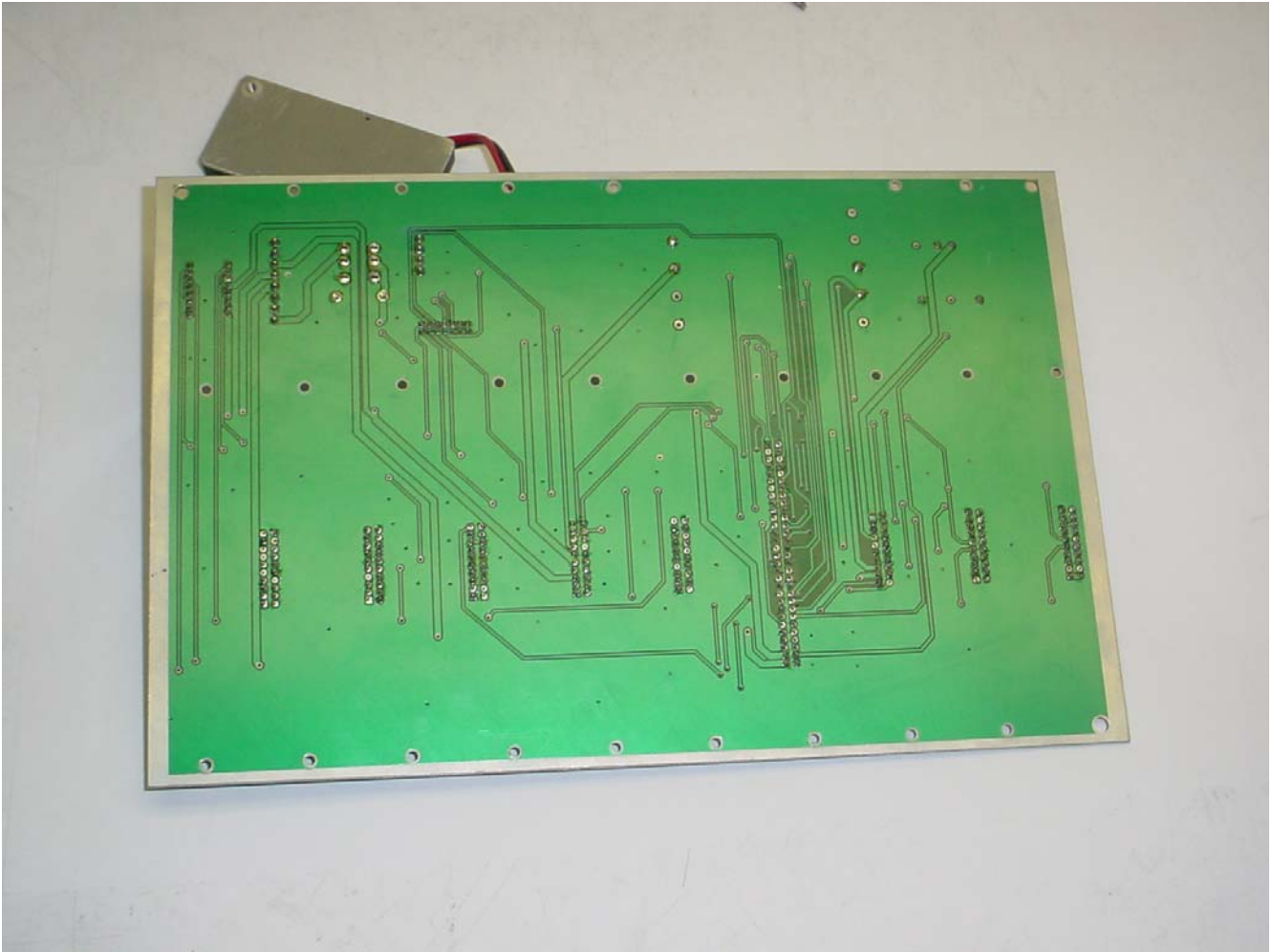
TX RX Systems, Inc.
Signal Booster 2, Model 61-88-50-A06-G1
FCC ID: EZZ5PI618850
IC: 1940A-PI618850

ANNEX 3 – INTERNAL PHOTOGRAPHS



TX RX Systems, Inc.
Signal Booster 2, Model 61-88-50-A06-G1
FCC ID: EZZ5PI618850
IC: 1940A-PI618850

ANNEX 3 – INTERNAL PHOTOGRAPHS



TX RX Systems, Inc.
Signal Booster 2, Model 61-88-50-A06-G1
FCC ID: EZZ5PI618850
IC: 1940A-PI618850

ANNEX 3 – INTERNAL PHOTOGRAPHS



TX RX Systems, Inc.
Signal Booster 2, Model 61-88-50-A06-G1
FCC ID: EZZ5PI618850
IC: 1940A-PI618850

ANNEX 3 – INTERNAL PHOTOGRAPHS



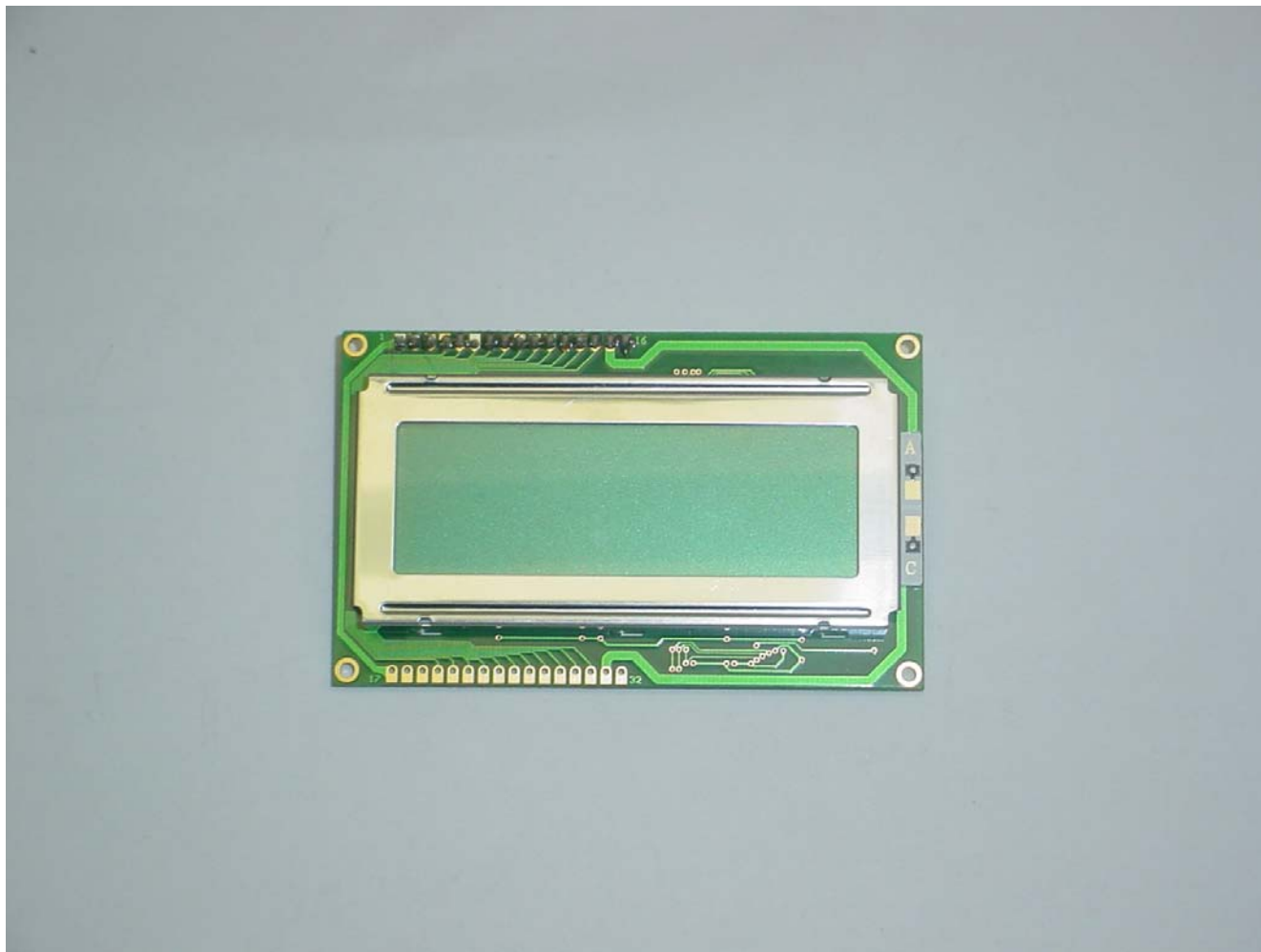
TX RX Systems, Inc.
Signal Booster 2, Model 61-88-50-A06-G1
FCC ID: EZZ5PI618850
IC: 1940A-PI618850

ANNEX 3 – INTERNAL PHOTOGRAPHS



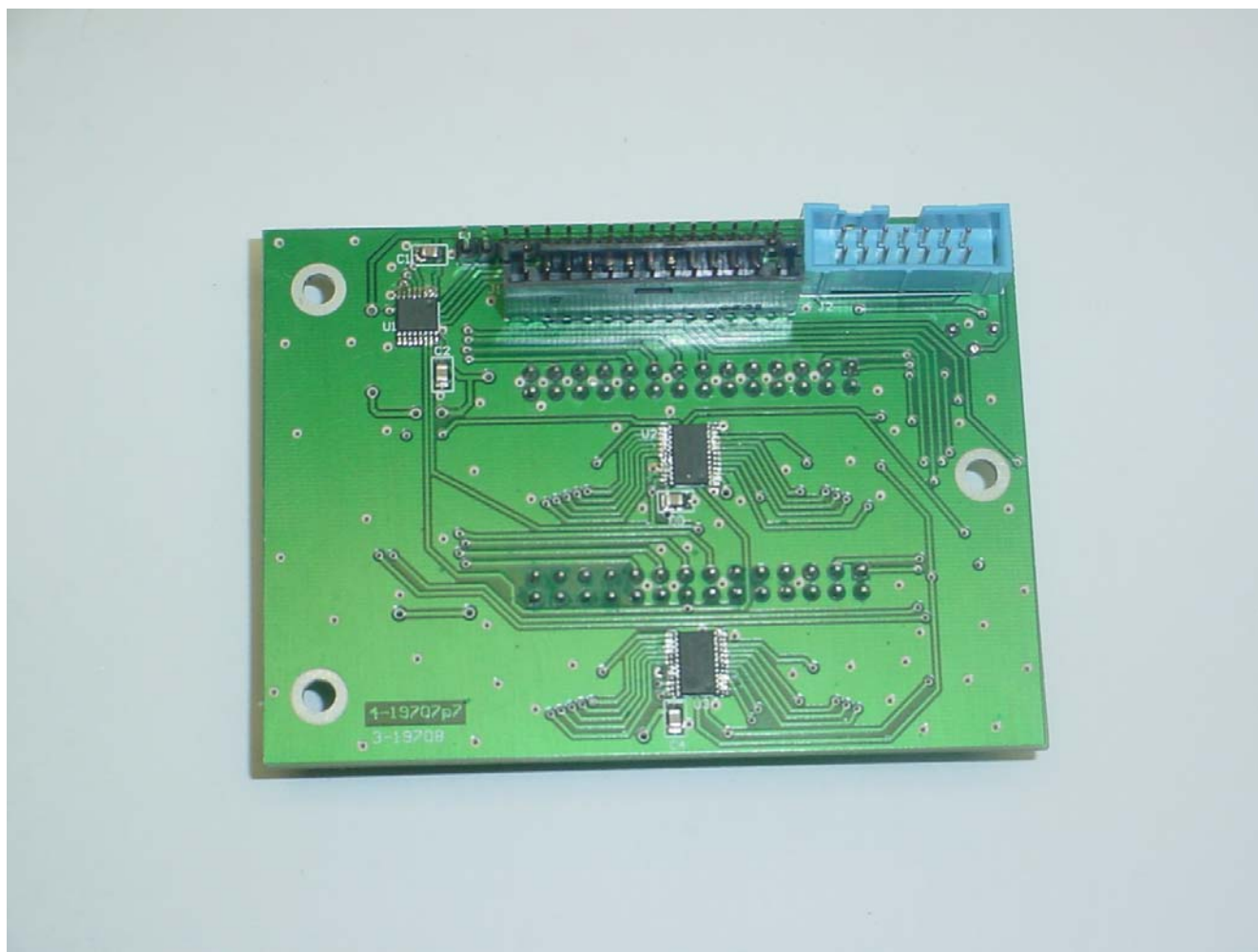
TX RX Systems, Inc.
Signal Booster 2, Model 61-88-50-A06-G1
FCC ID: EZZ5PI618850
IC: 1940A-PI618850

ANNEX 3 – INTERNAL PHOTOGRAPHS



TX RX Systems, Inc.
Signal Booster 2, Model 61-88-50-A06-G1
FCC ID: EZZ5PI618850
IC: 1940A-PI618850

ANNEX 3 – INTERNAL PHOTOGRAPHS



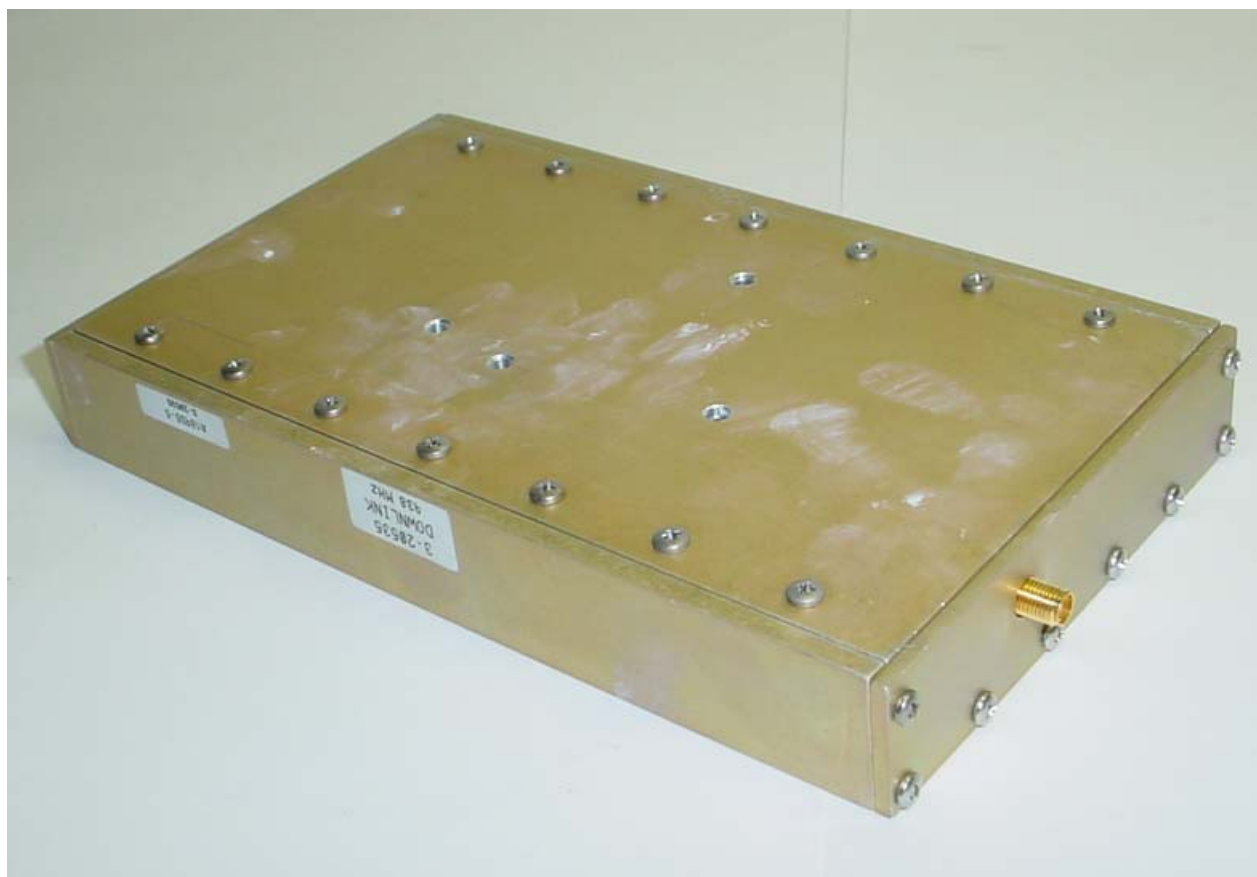
TX RX Systems, Inc.
Signal Booster 2, Model 61-88-50-A06-G1
FCC ID: EZZ5PI618850
IC: 1940A-PI618850

ANNEX 3 – INTERNAL PHOTOGRAPHS



**TX RX Systems, Inc.
Signal Booster 2, Model 61-88-50-A06-G1
FCC ID: EZZ5PI618850
IC: 1940A-PI618850**

ANNEX 3 – INTERNAL PHOTOGRAPHS



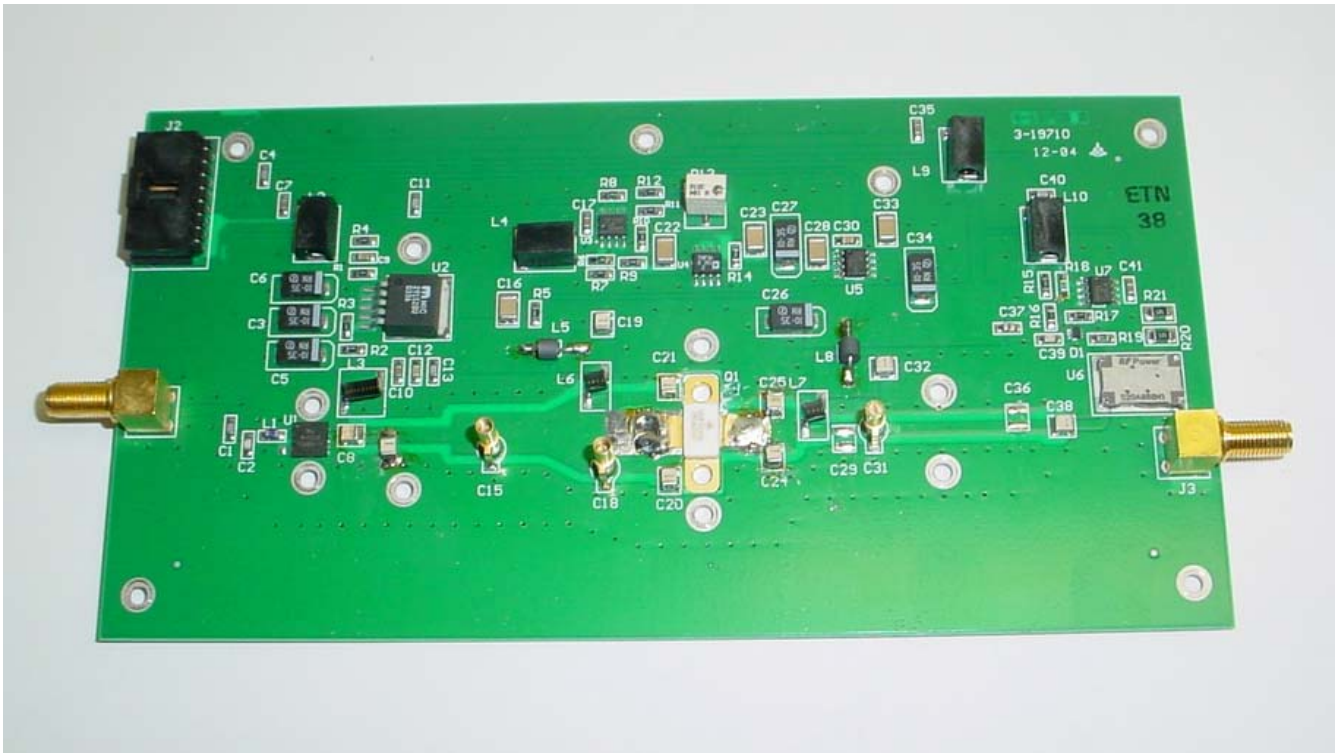
TX RX Systems, Inc.
Signal Booster 2, Model 61-88-50-A06-G1
FCC ID: EZZ5PI618850
IC: 1940A-PI618850

ANNEX 3 – INTERNAL PHOTOGRAPHS



TX RX Systems, Inc.
Signal Booster 2, Model 61-88-50-A06-G1
FCC ID: EZZ5PI618850
IC: 1940A-PI618850

ANNEX 3 – INTERNAL PHOTOGRAPHS



**TX RX Systems, Inc.
Signal Booster 2, Model 61-88-50-A06-G1
FCC ID: EZZ5PI618850
IC: 1940A-PI618850**

ANNEX 3 – INTERNAL PHOTOGRAPHS



**TX RX Systems, Inc.
Signal Booster 2, Model 61-88-50-A06-G1
FCC ID: EZZ5PI618850
IC: 1940A-PI618850**

ANNEX 3 – INTERNAL PHOTOGRAPHS



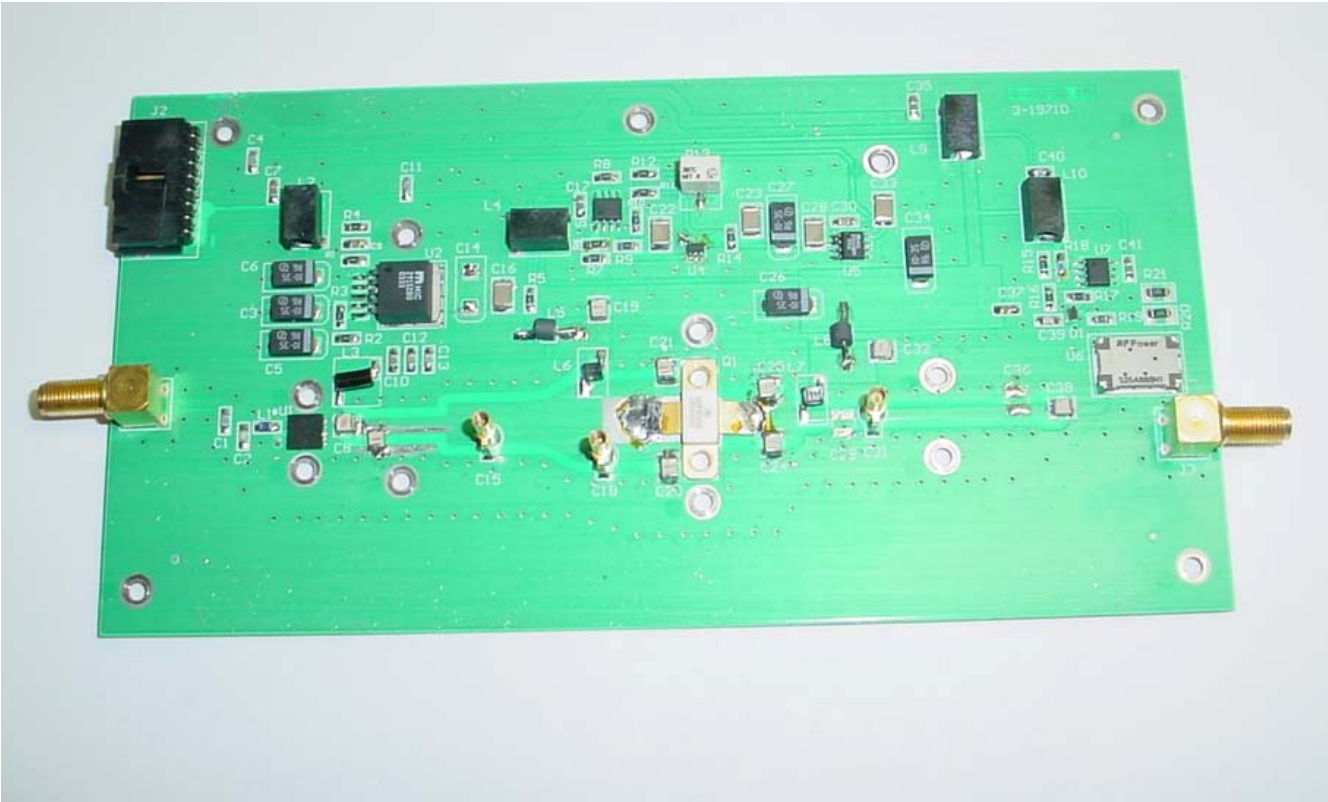
**TX RX Systems, Inc.
Signal Booster 2, Model 61-88-50-A06-G1
FCC ID: EZZ5PI618850
IC: 1940A-PI618850**

ANNEX 3 – INTERNAL PHOTOGRAPHS



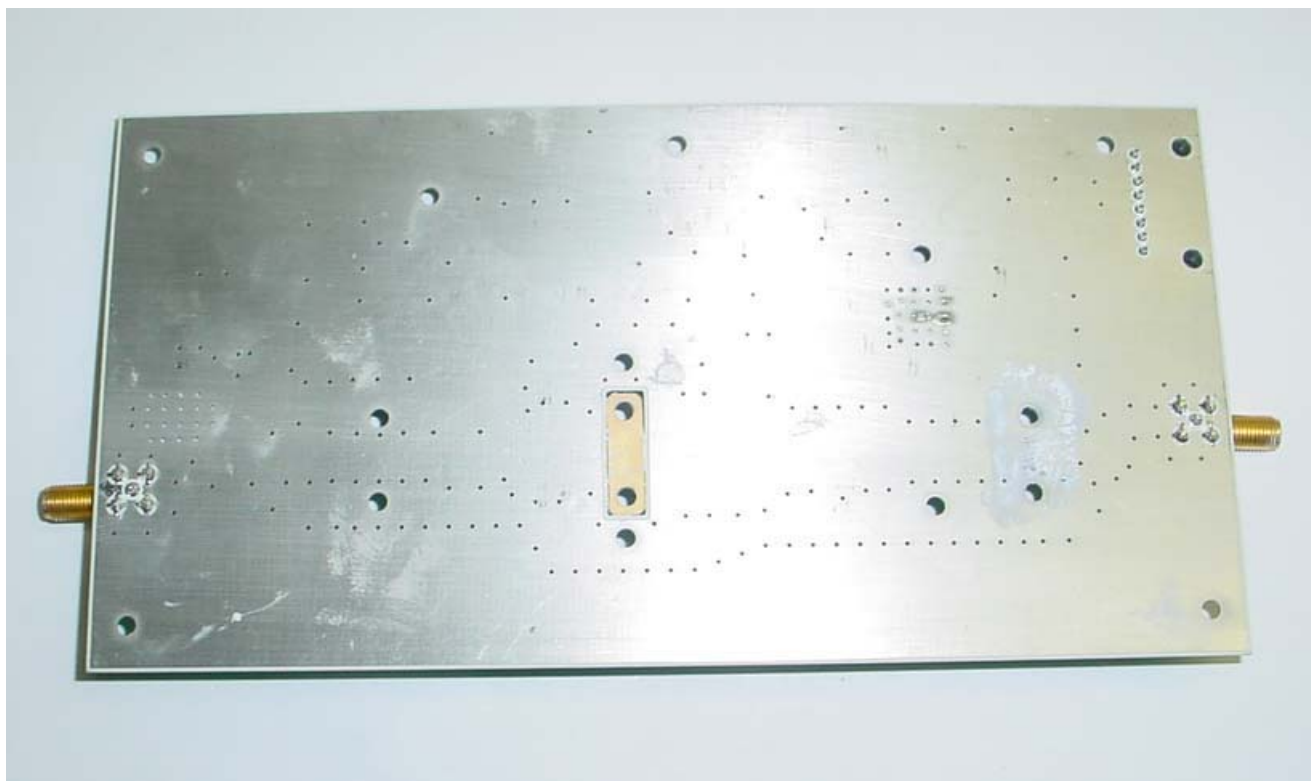
TX RX Systems, Inc.
Signal Booster 2, Model 61-88-50-A06-G1
FCC ID: EZZ5PI618850
IC: 1940A-PI618850

ANNEX 3 – INTERNAL PHOTOGRAPHS



**TX RX Systems, Inc.
Signal Booster 2, Model 61-88-50-A06-G1
FCC ID: EZZ5PI618850
IC: 1940A-PI618850**

ANNEX 3 – INTERNAL PHOTOGRAPHS



TX RX Systems, Inc.
Signal Booster 2, Model 61-88-50-A06-G1
FCC ID: EZZ5PI618850
IC: 1940A-PI618850