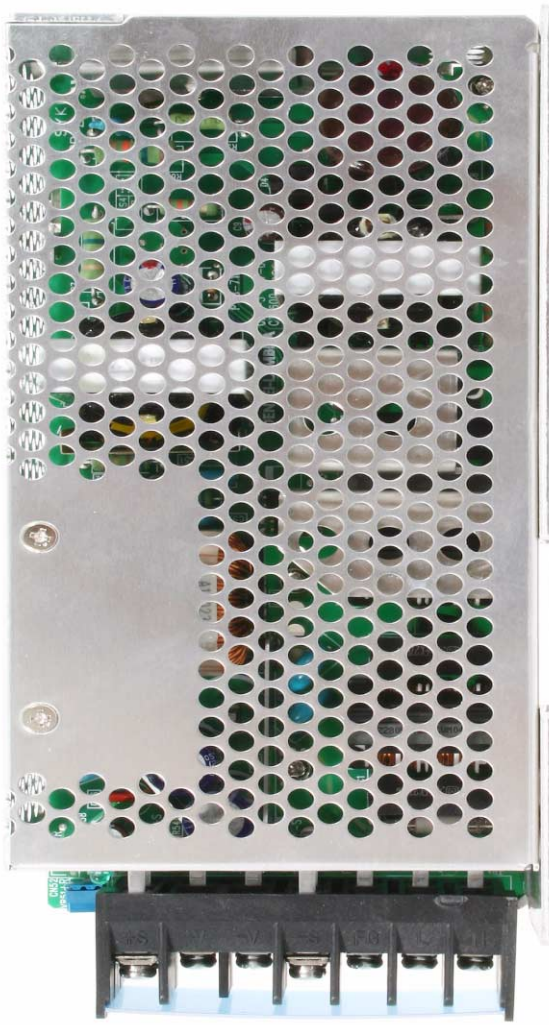
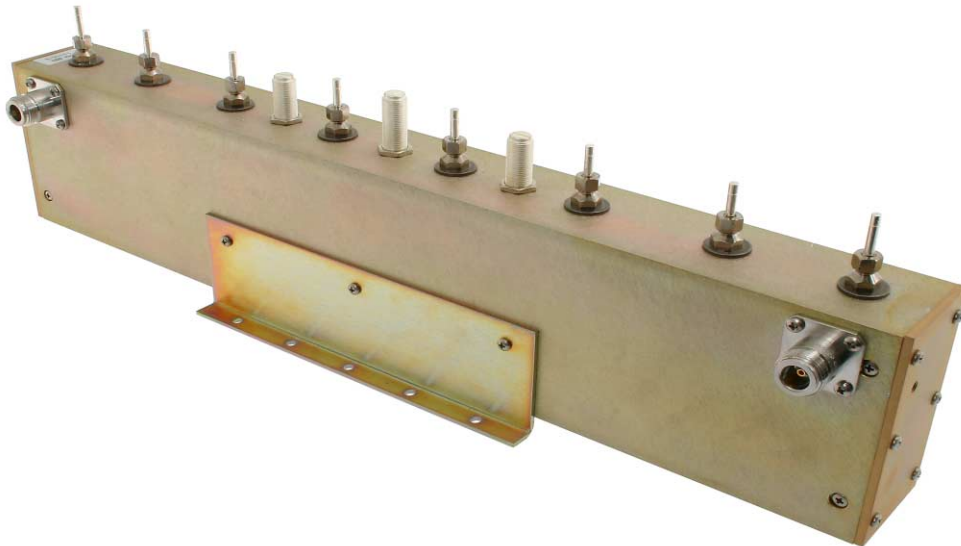


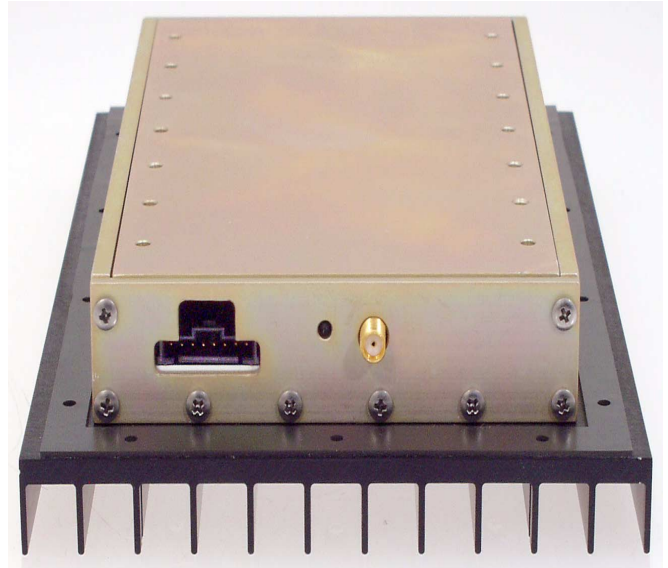
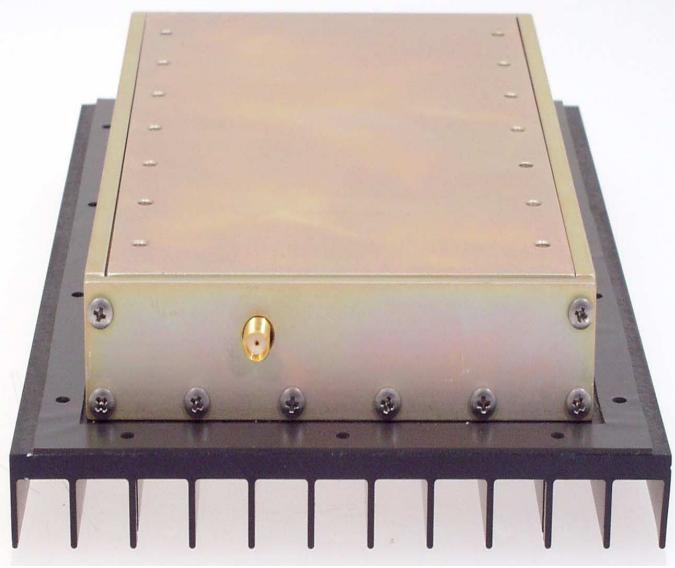
61-83B-50-A12-G1 Two-Way Signal Booster System  
Cabinet Inside View



8-20667 Power Supply Assembly



3-21111 Filter Assembly



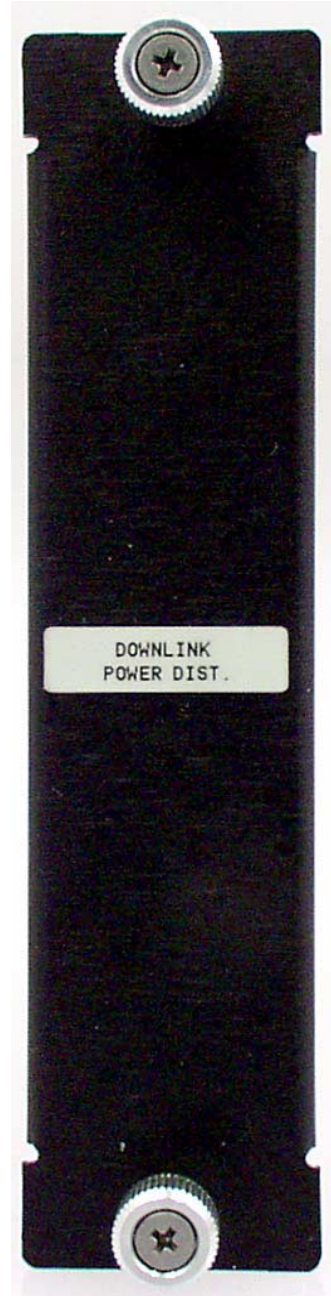
3-21121 Downlink Power Amplifier Assembly  
3-21119 Uplink Power Amplifier Assembly



3-19576 Mid-Level Amplifier Assembly



3-19575 Low-Level Amplifier Assembly



3-19833 Power Distribution Card



3-19832 Controller Card

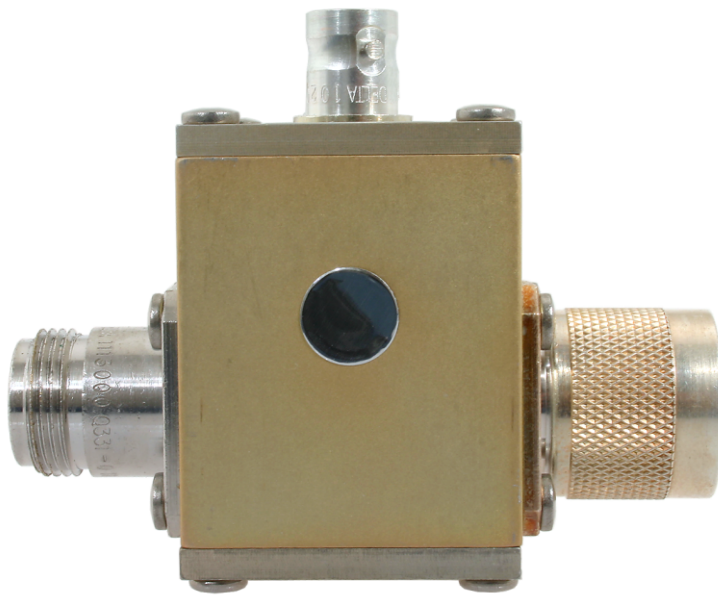




3-20294 Low Gain Amplifier Assembly



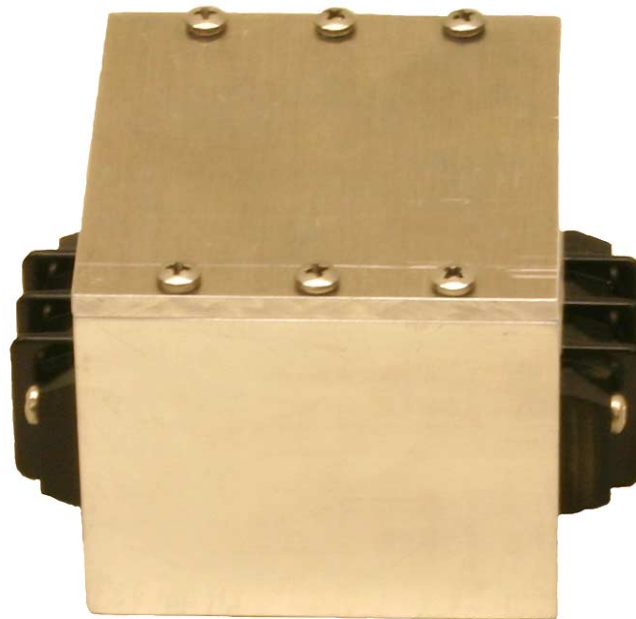
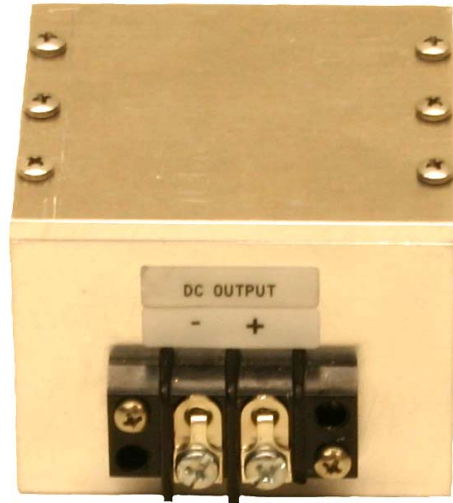
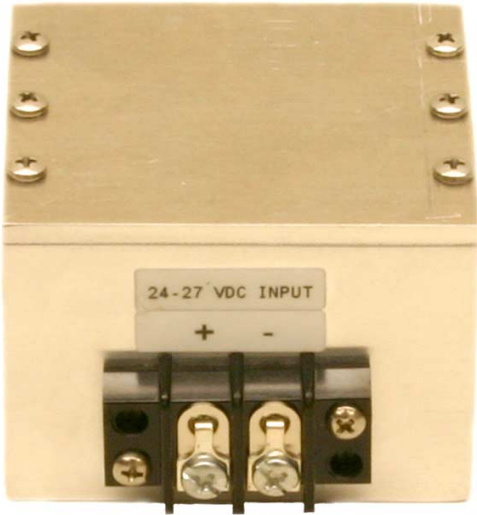
3-20208 Attenuator Card Assembly



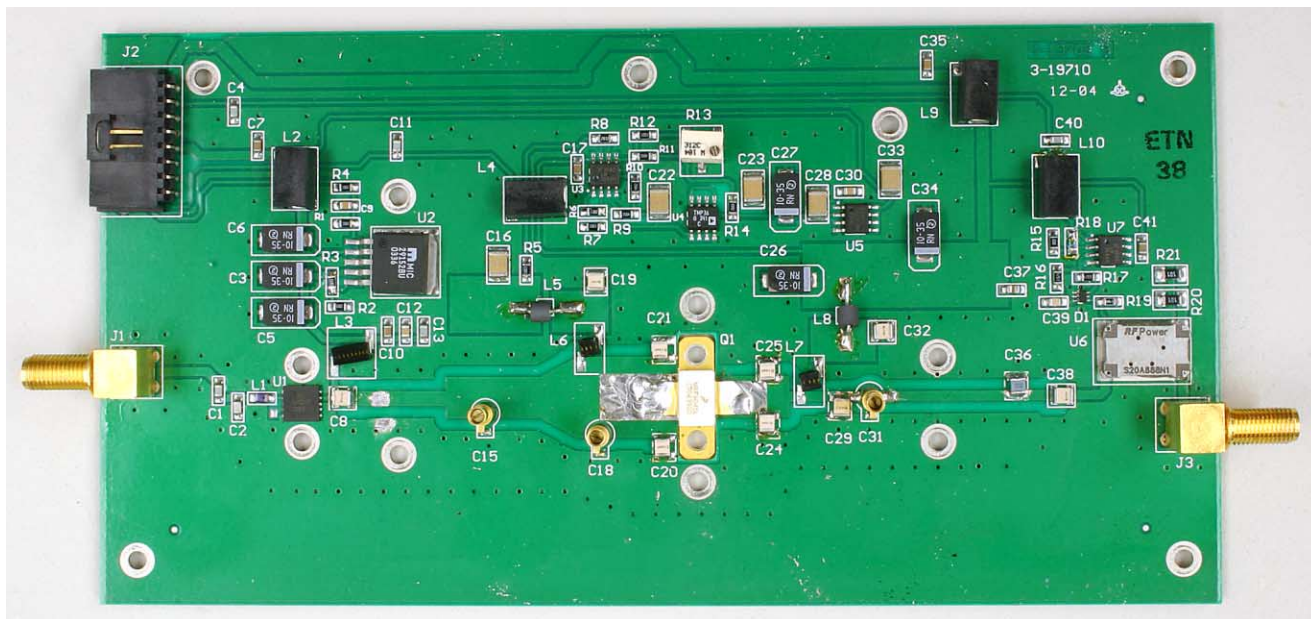
3-3060 Signal Sampler Assembly



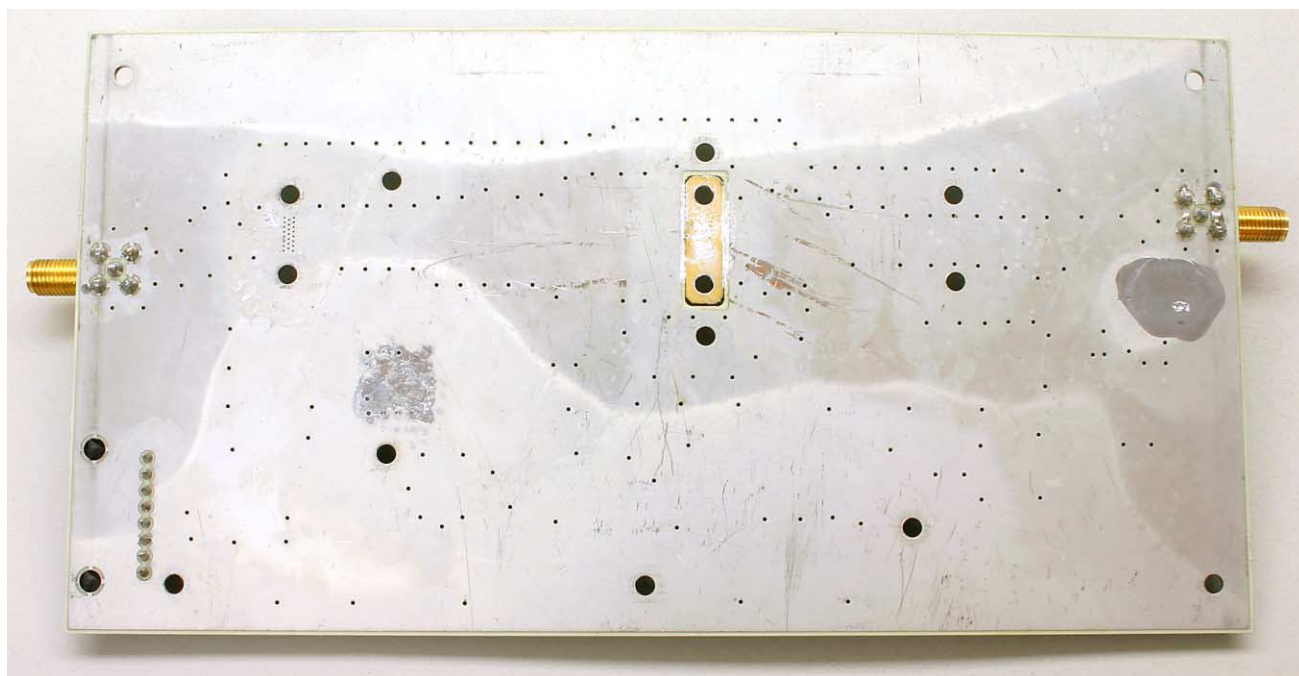
8-20748 Isolator Assembly



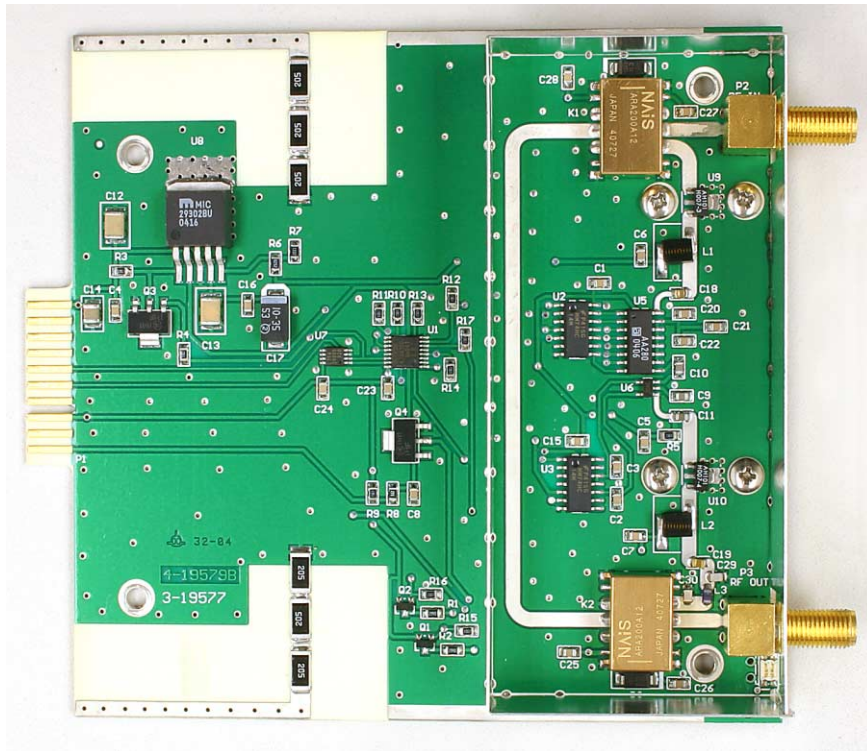
3-21226 DC Filter Assembly



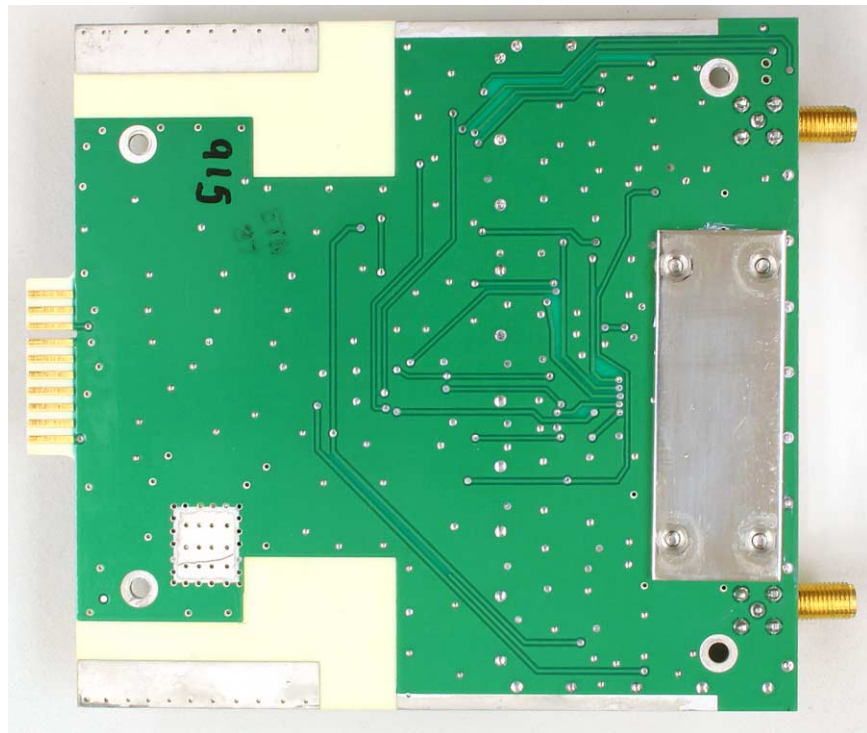
3-21119 and 3-21121 Power Amplifier Assembly Front PCB View



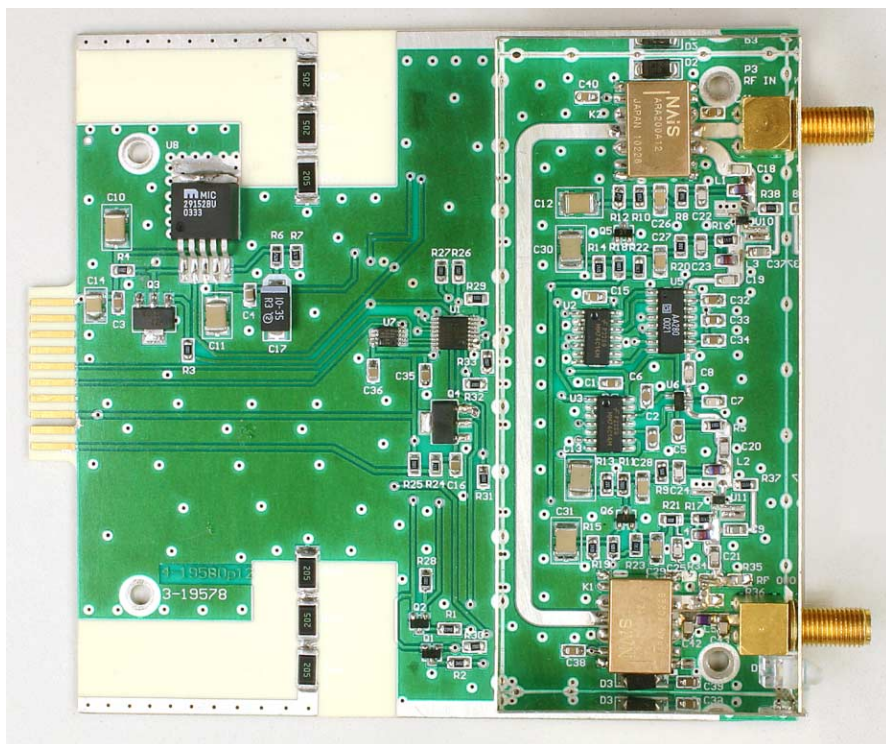
3-21119 and 3-21121 Power Amplifier Assembly Back PCB View



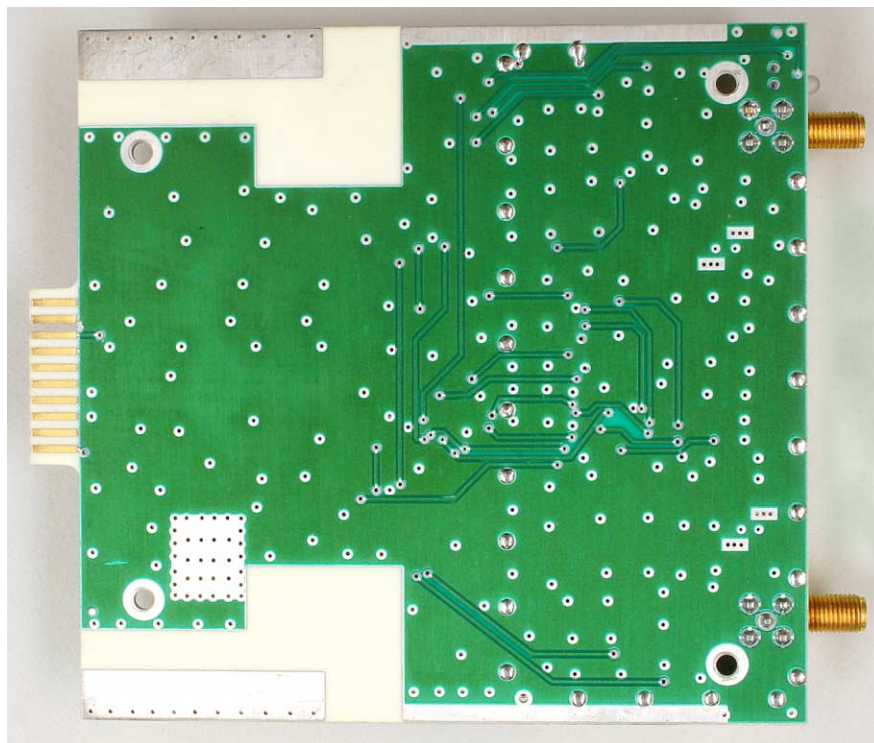
3-19576 Mid-Level Amplifier Assembly Front PCB View



3-19576 Mid-Level Amplifier Assembly Back PCB View

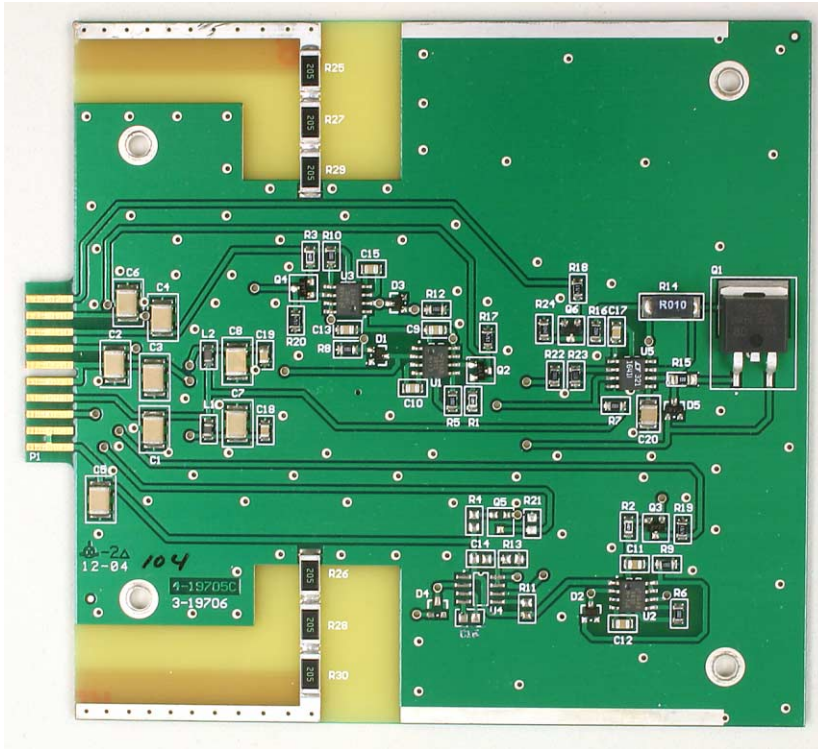


3-19575 Low-Level Amplifier Assembly Front PCB View

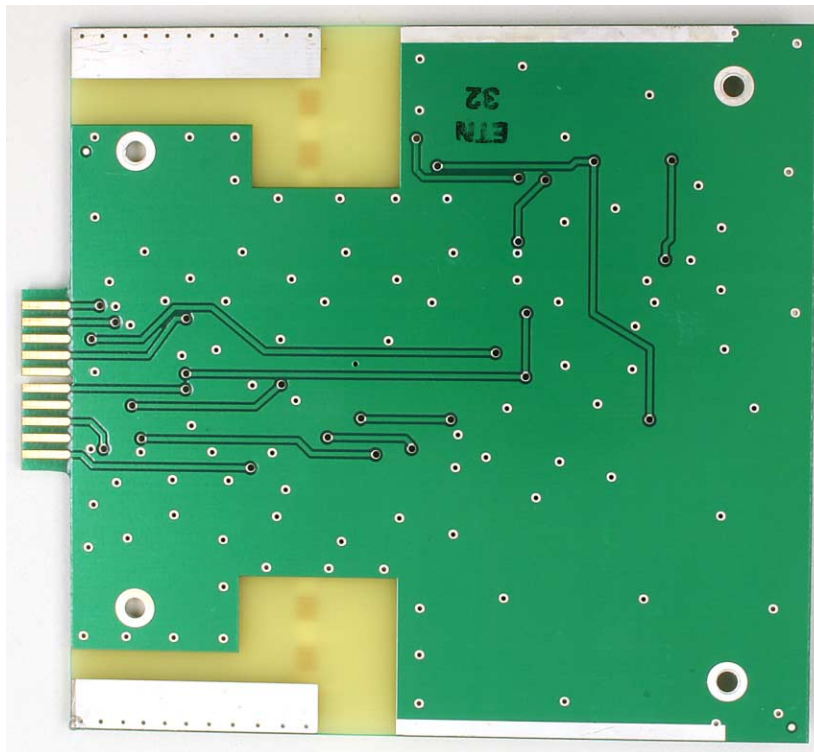


3-19575 Low-Level Amplifier Assembly Back PCB View

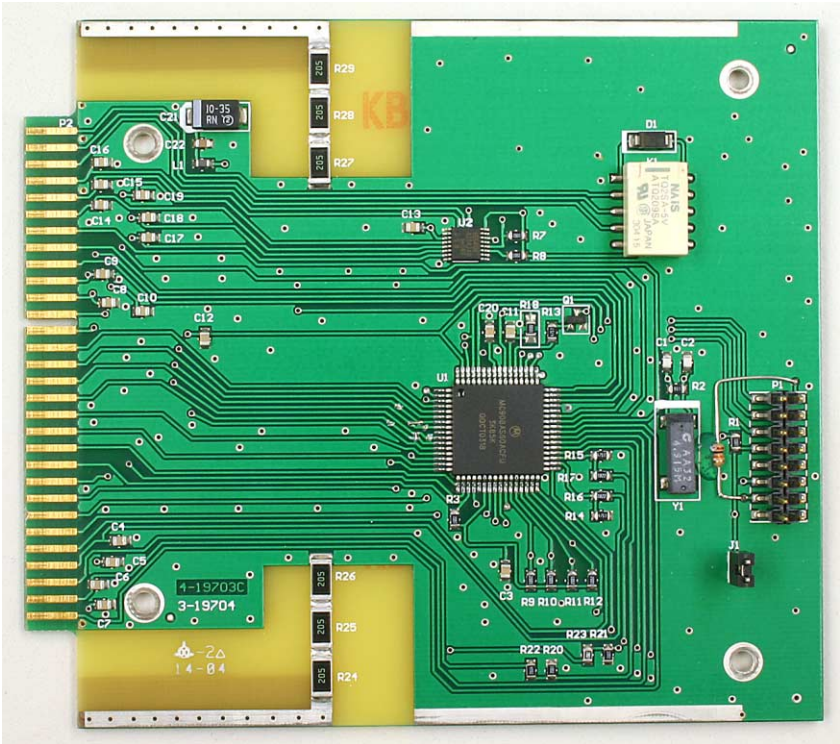




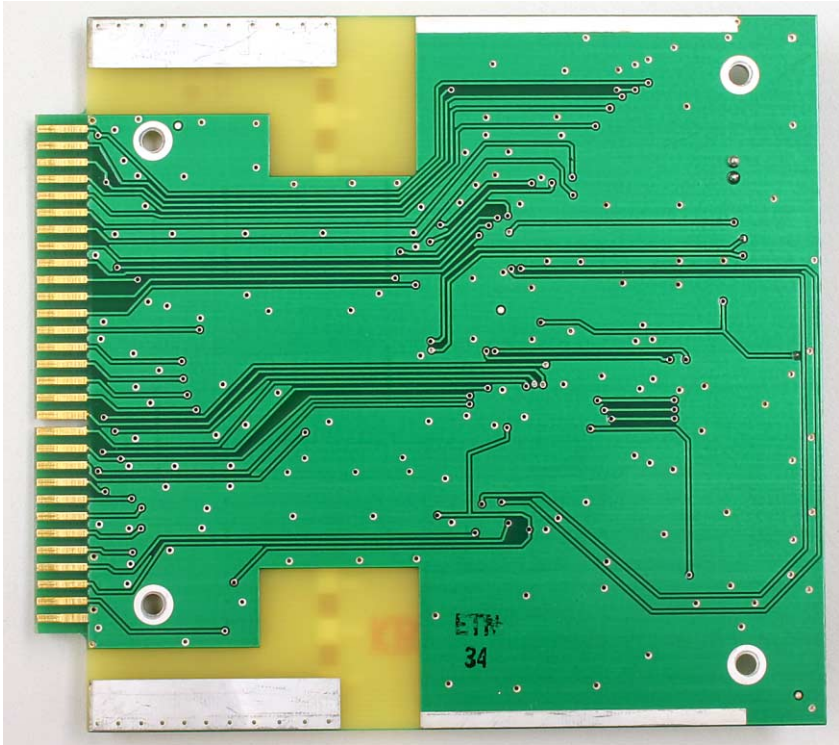
3-19833 Power Distribution Card Front PCB View



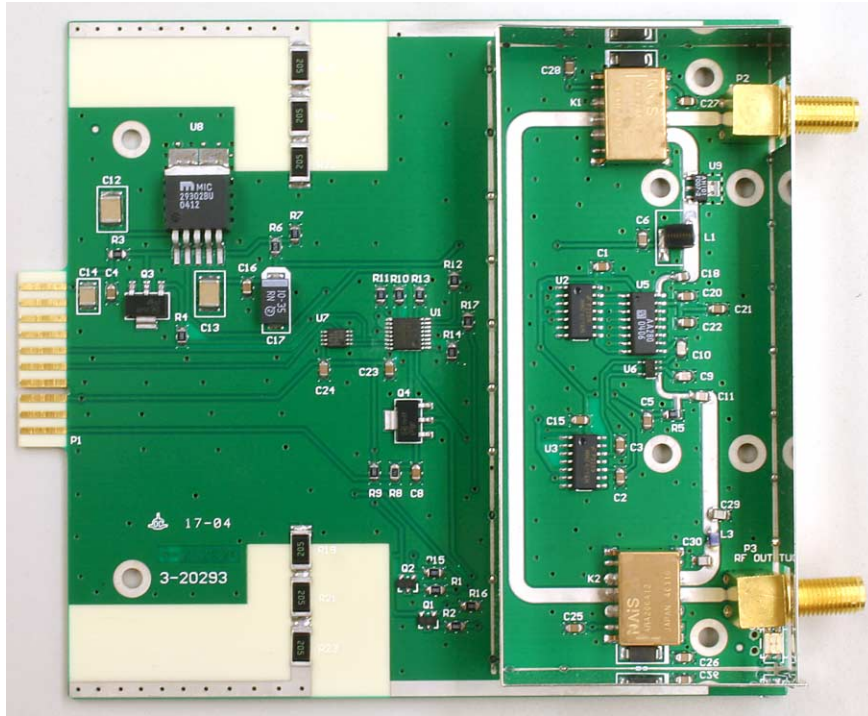
3-19833 Power Distribution Card Back PCB View



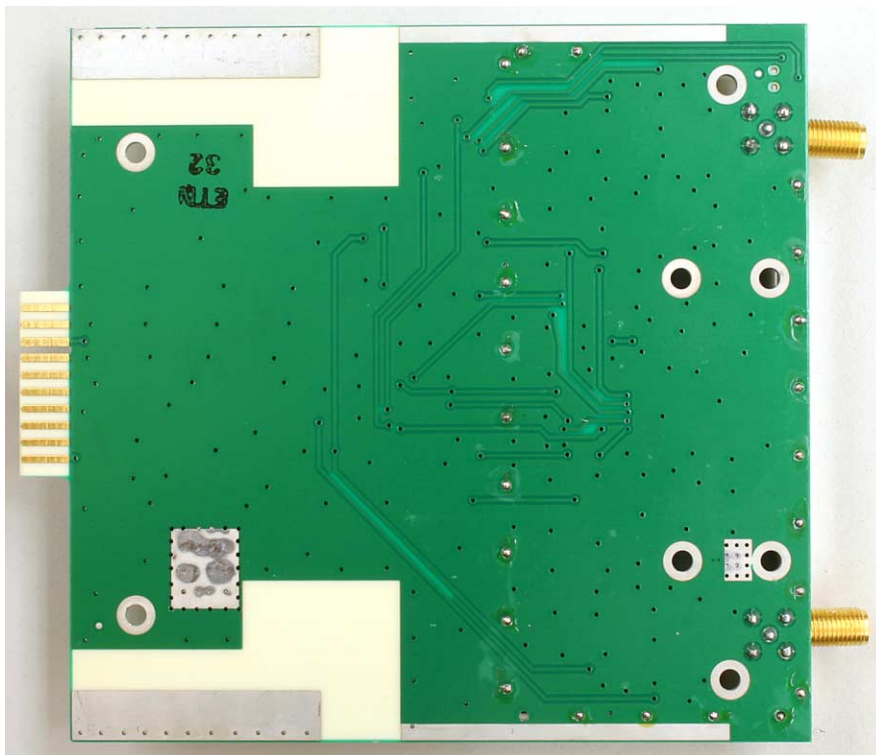
3-19832 Controller Card Front PCB View



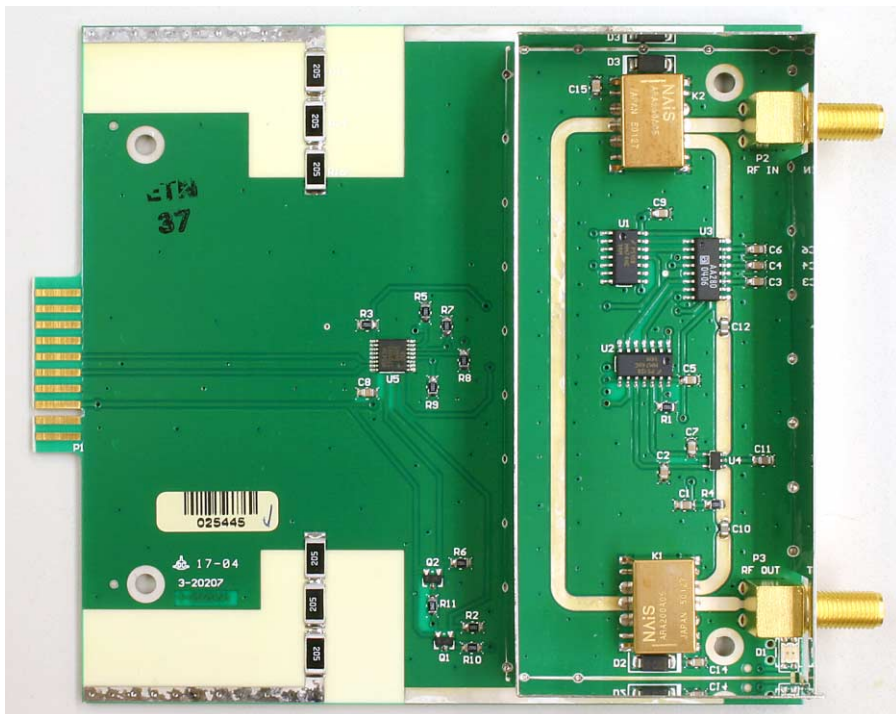
3-19832 Controller Card Back PCB View



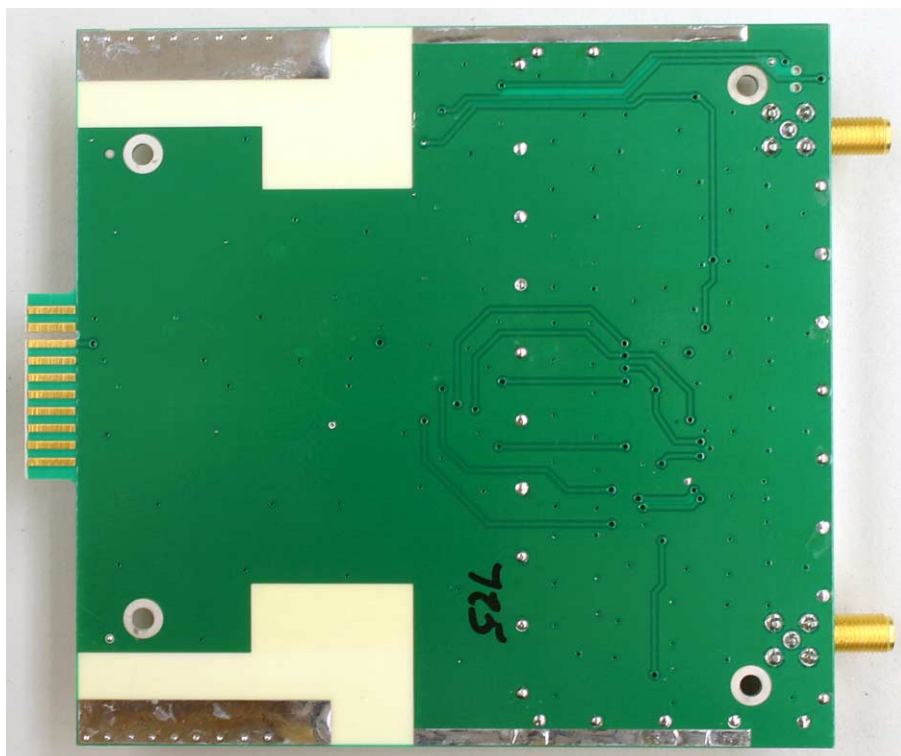
3-20294 Low Gain Amplifier Front PCB View



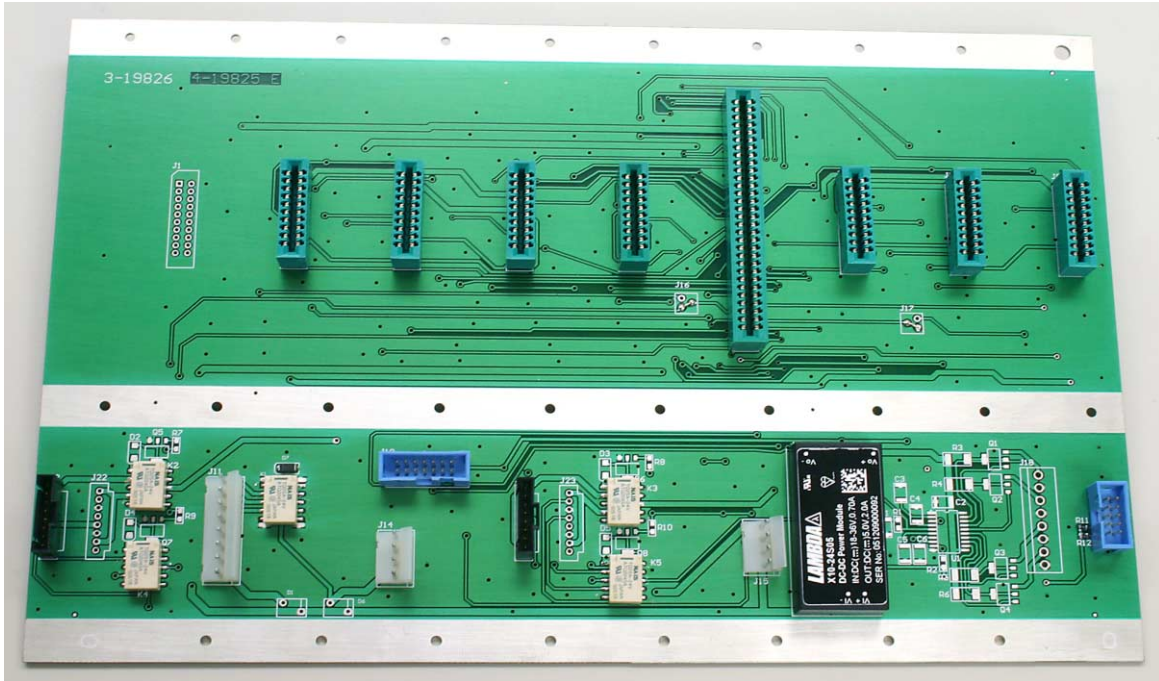
3-20294 Low Gain Amplifier Back PCB View



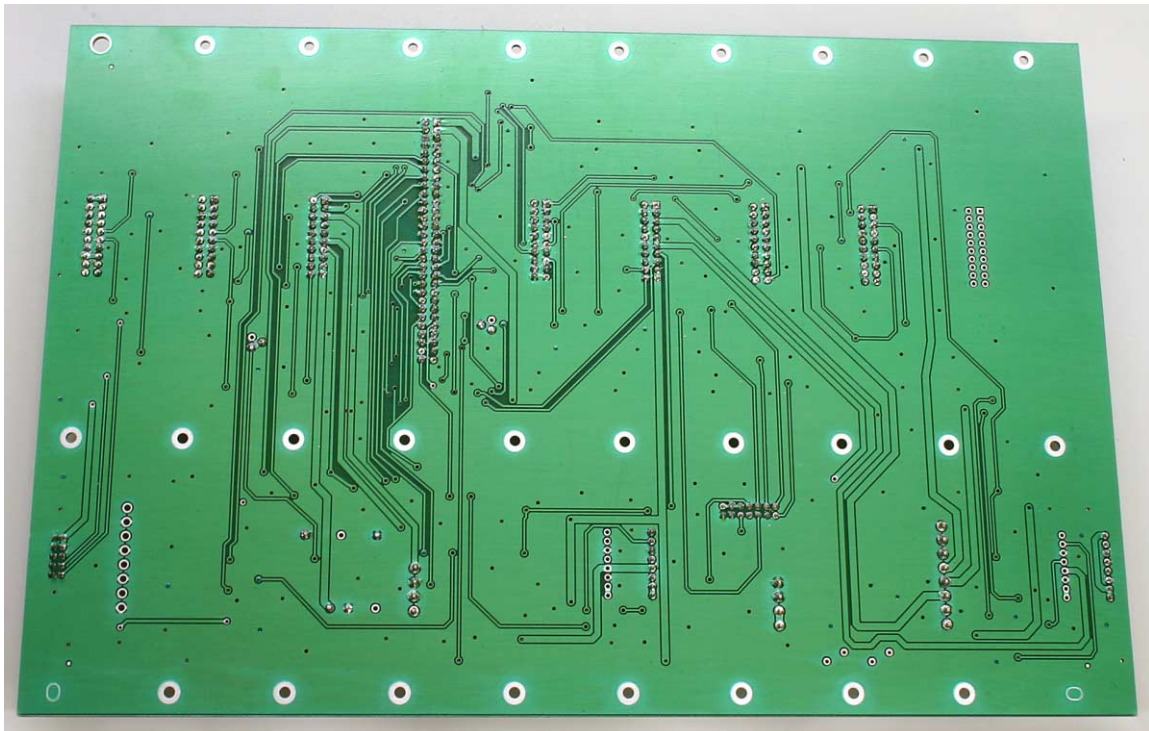
3-20208 Attenuator Card Front PCB View



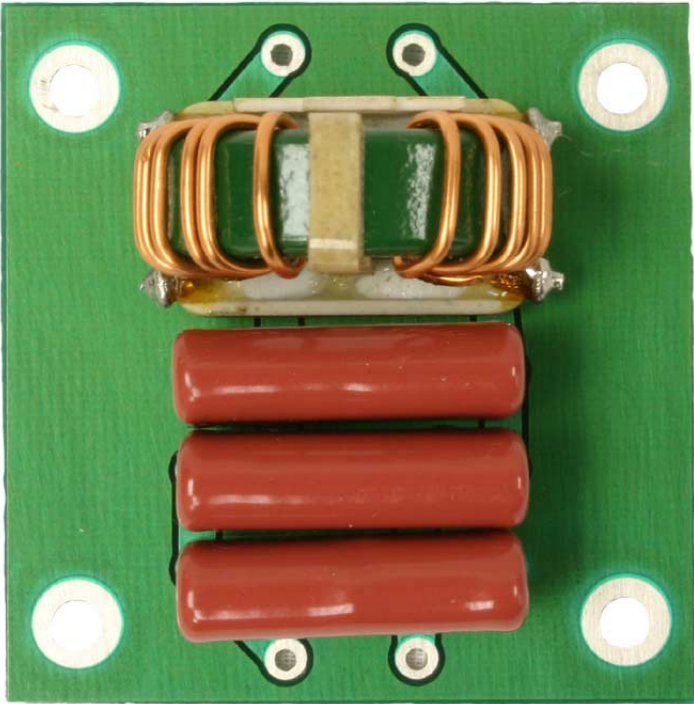
3-20208 Attenuator Card Back PCB View



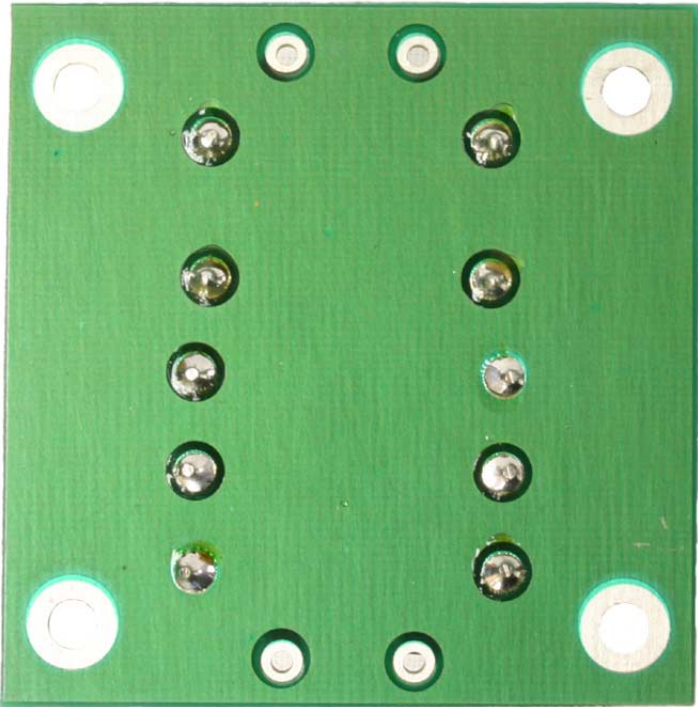
3-19826 Card Cage Front PCB View



3-19826 Card Cage Back PCB View



3-21226 DC Filter Front PCB View



3-21226 DC Filter Rear PCB View