

ANNEX 3 – INTERNAL PHOTOGRAPHS



TX RX Systems, Inc.
Signal Booster 2, Model 61-68-50
FCC ID: EZZ5PI616850
IC: 1940A-PI616850

ANNEX 3 – INTERNAL PHOTOGRAPHS



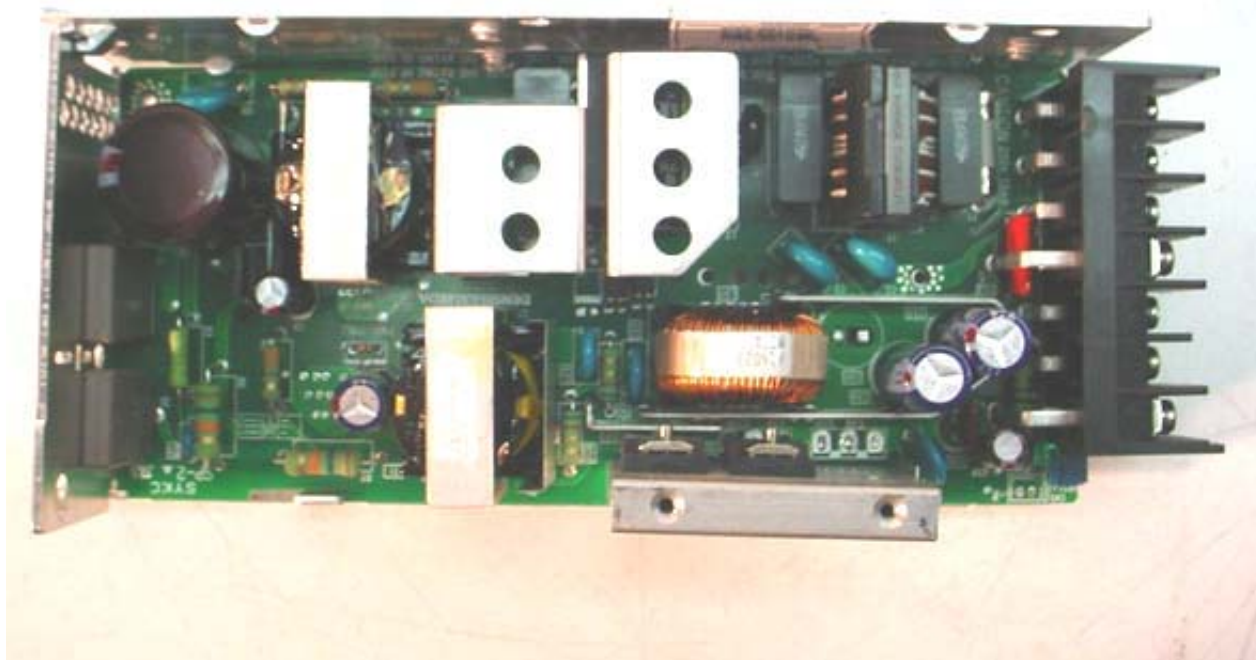
TX RX Systems, Inc.
Signal Booster 2, Model 61-68-50
FCC ID: EZZ5PI616850
IC: 1940A-PI616850

ANNEX 3 – INTERNAL PHOTOGRAPHS



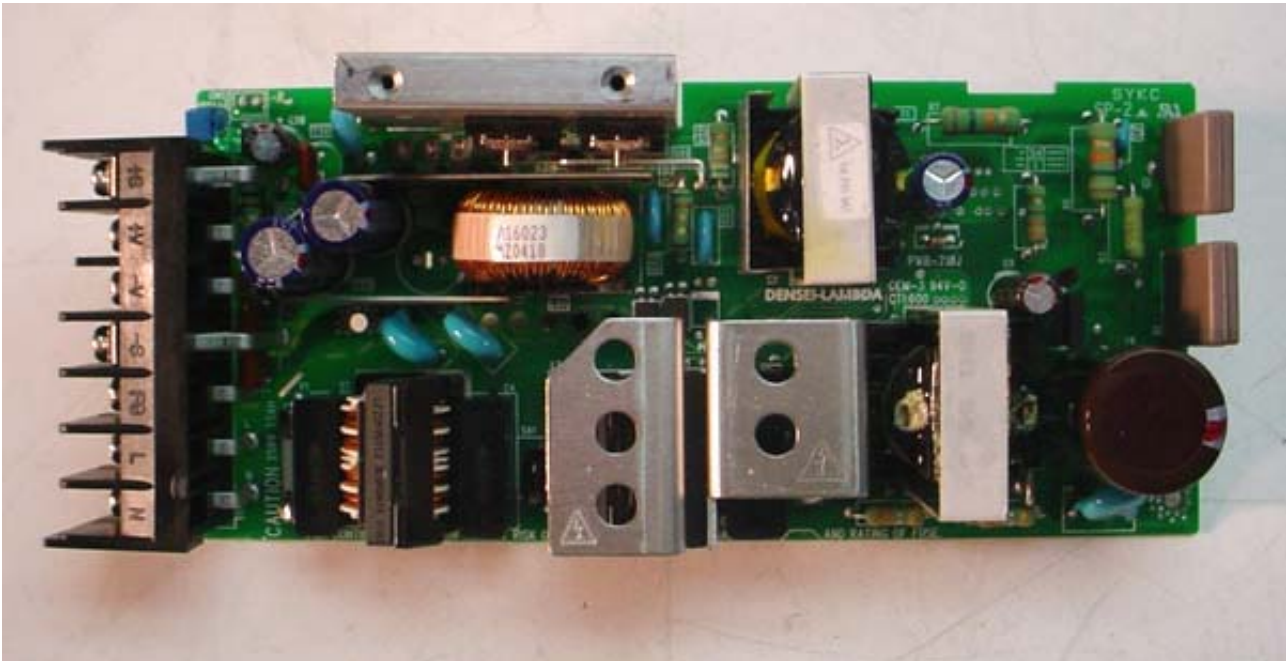
TX RX Systems, Inc.
Signal Booster 2, Model 61-68-50
FCC ID: EZZ5PI616850
IC: 1940A-PI616850

ANNEX 3 – INTERNAL PHOTOGRAPHS



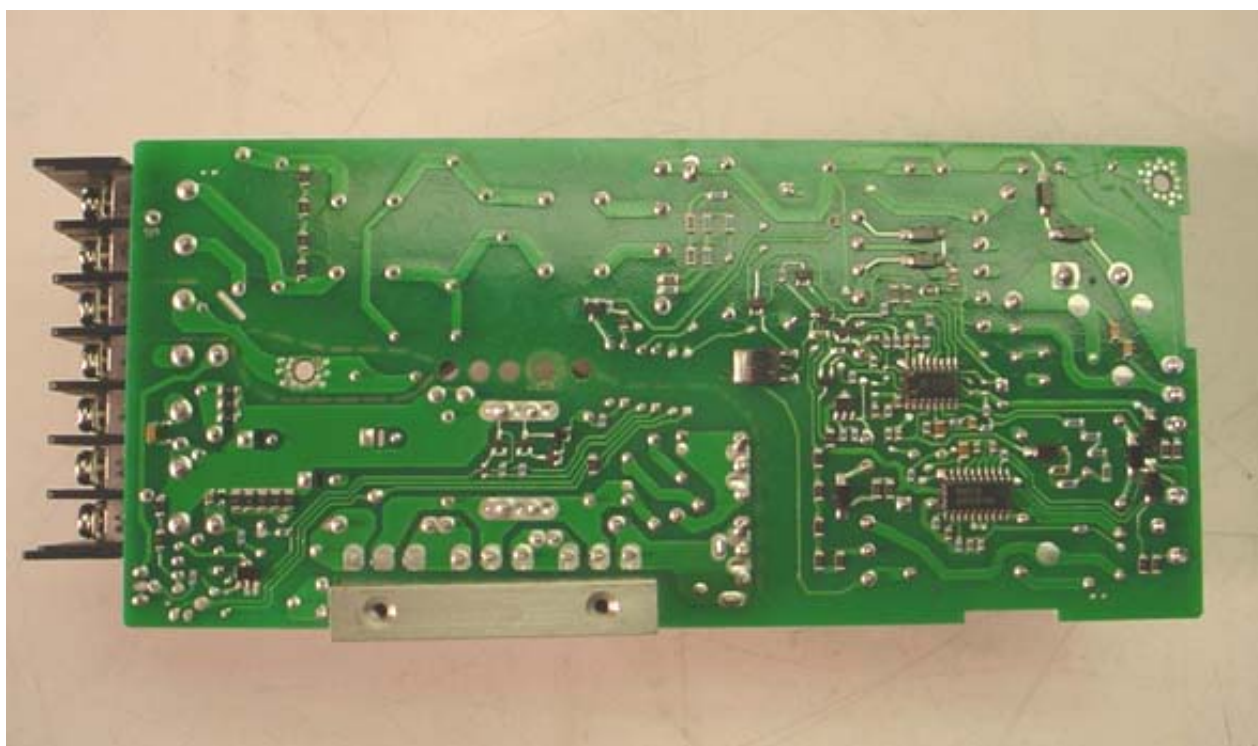
TX RX Systems, Inc.
Signal Booster 2, Model 61-68-50
FCC ID: EZZ5PI616850
IC: 1940A-PI616850

ANNEX 3 – INTERNAL PHOTOGRAPHS



**TX RX Systems, Inc.
Signal Booster 2, Model 61-68-50
FCC ID: EZZ5PI616850
IC: 1940A-PI616850**

ANNEX 3 – INTERNAL PHOTOGRAPHS



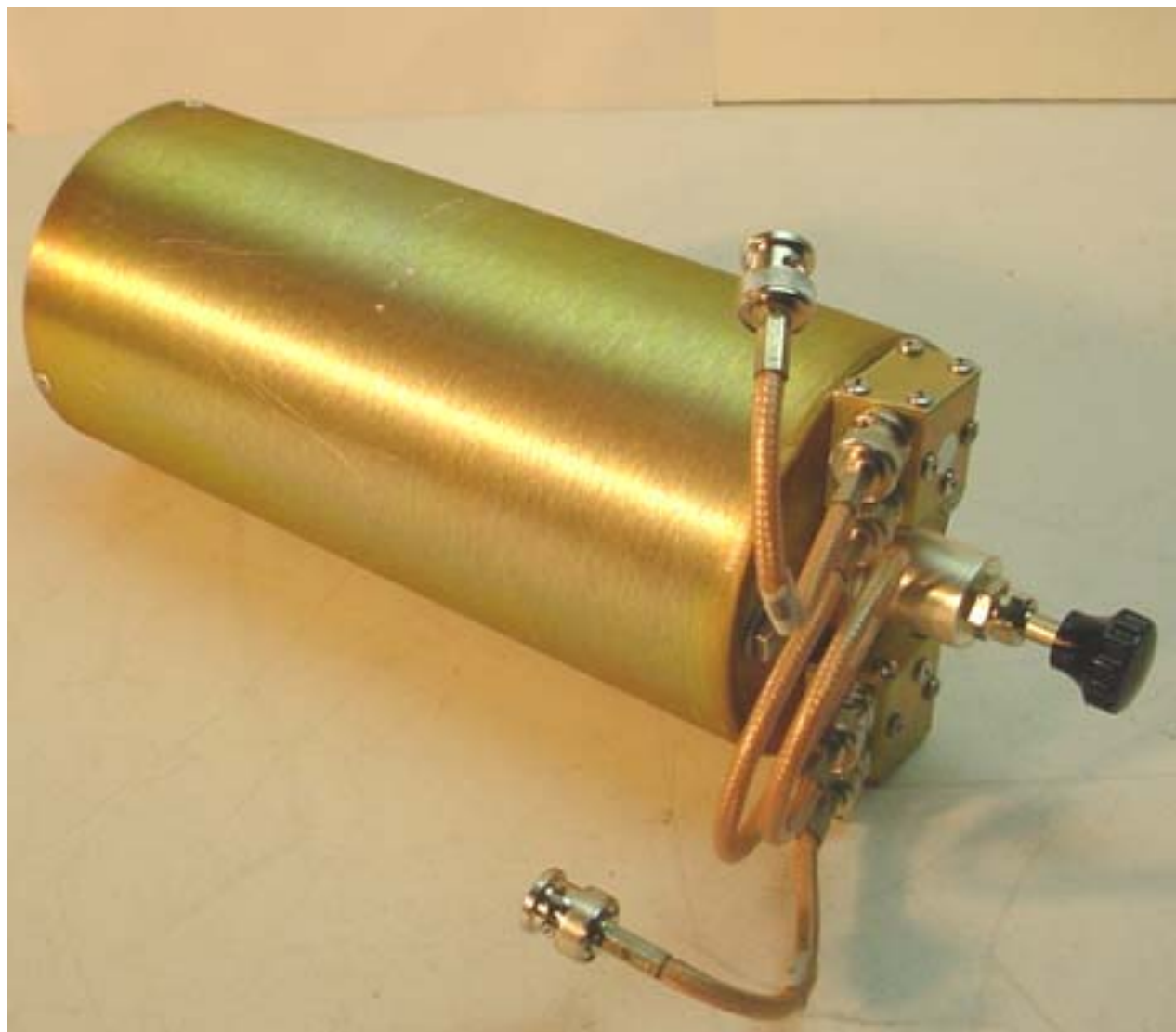
TX RX Systems, Inc.
Signal Booster 2, Model 61-68-50
FCC ID: EZZ5PI616850
IC: 1940A-PI616850

ANNEX 3 – INTERNAL PHOTOGRAPHS



TX RX Systems, Inc.
Signal Booster 2, Model 61-68-50
FCC ID: EZZ5PI616850
IC: 1940A-PI616850

ANNEX 3 – INTERNAL PHOTOGRAPHS



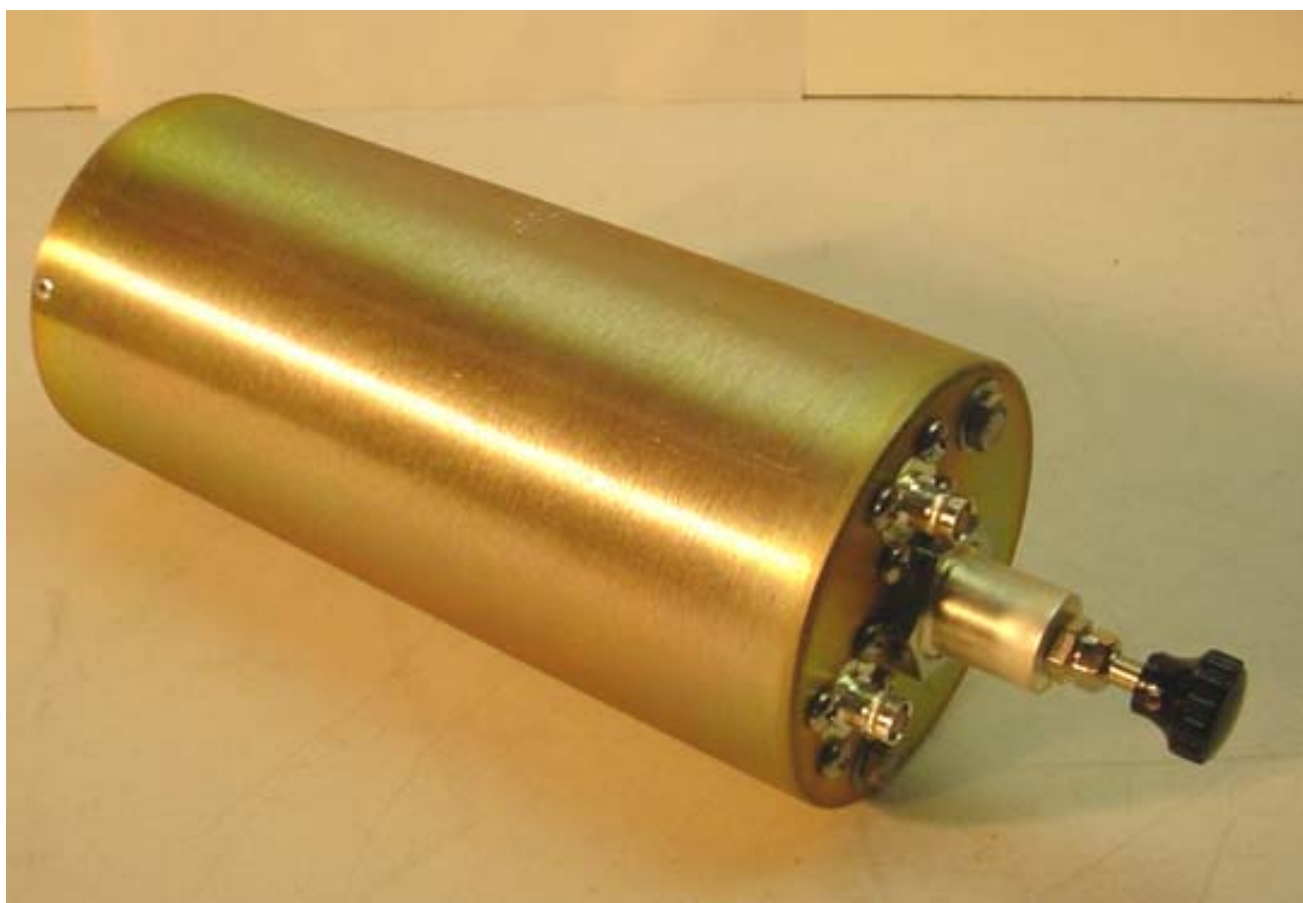
**TX RX Systems, Inc.
Signal Booster 2, Model 61-68-50
FCC ID: EZZ5PI616850
IC: 1940A-PI616850**

ANNEX 3 – INTERNAL PHOTOGRAPHS



**TX RX Systems, Inc.
Signal Booster 2, Model 61-68-50
FCC ID: EZZ5PI616850
IC: 1940A-PI616850**

ANNEX 3 – INTERNAL PHOTOGRAPHS



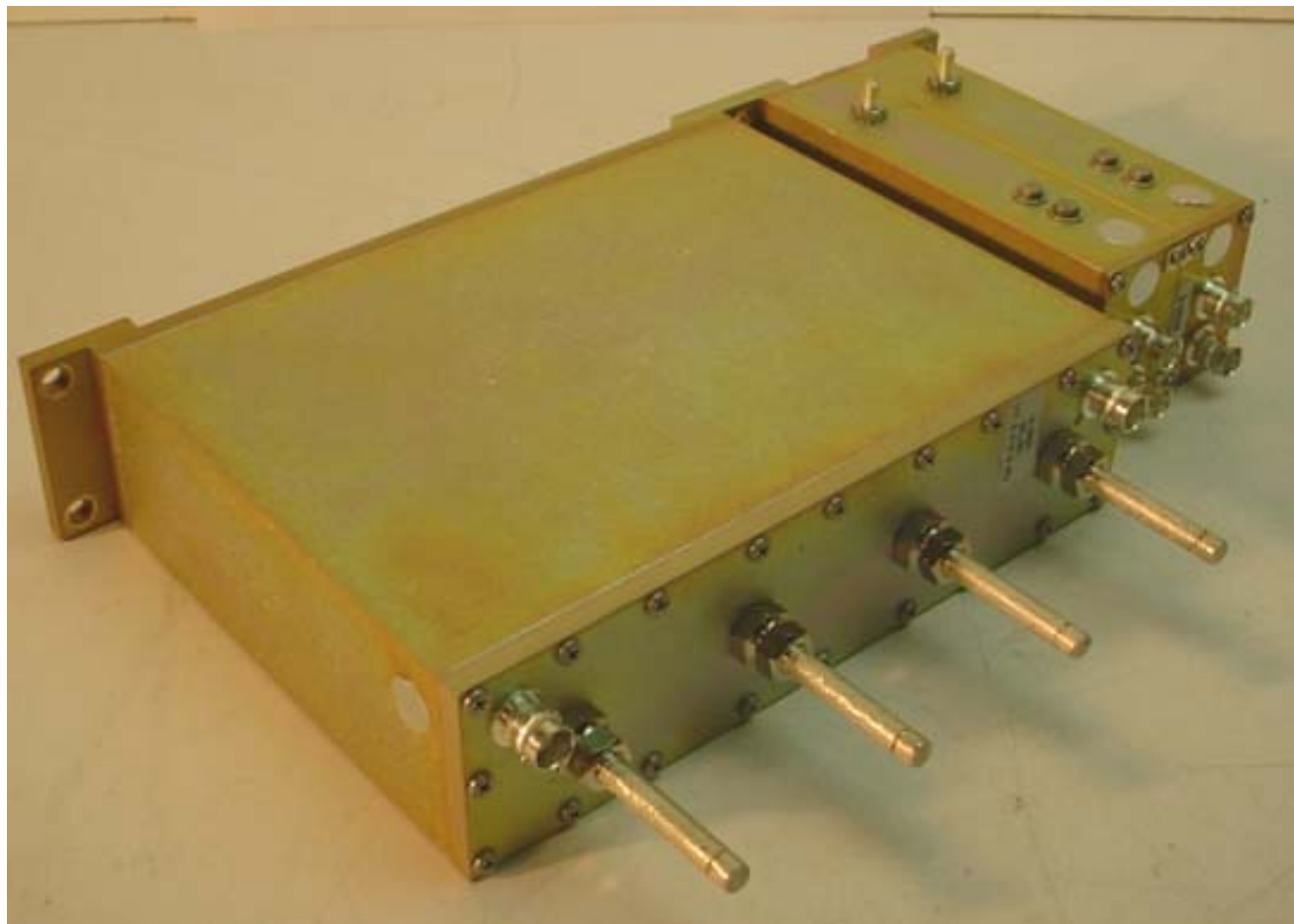
**TX RX Systems, Inc.
Signal Booster 2, Model 61-68-50
FCC ID: EZZ5PI616850
IC: 1940A-PI616850**

ANNEX 3 – INTERNAL PHOTOGRAPHS



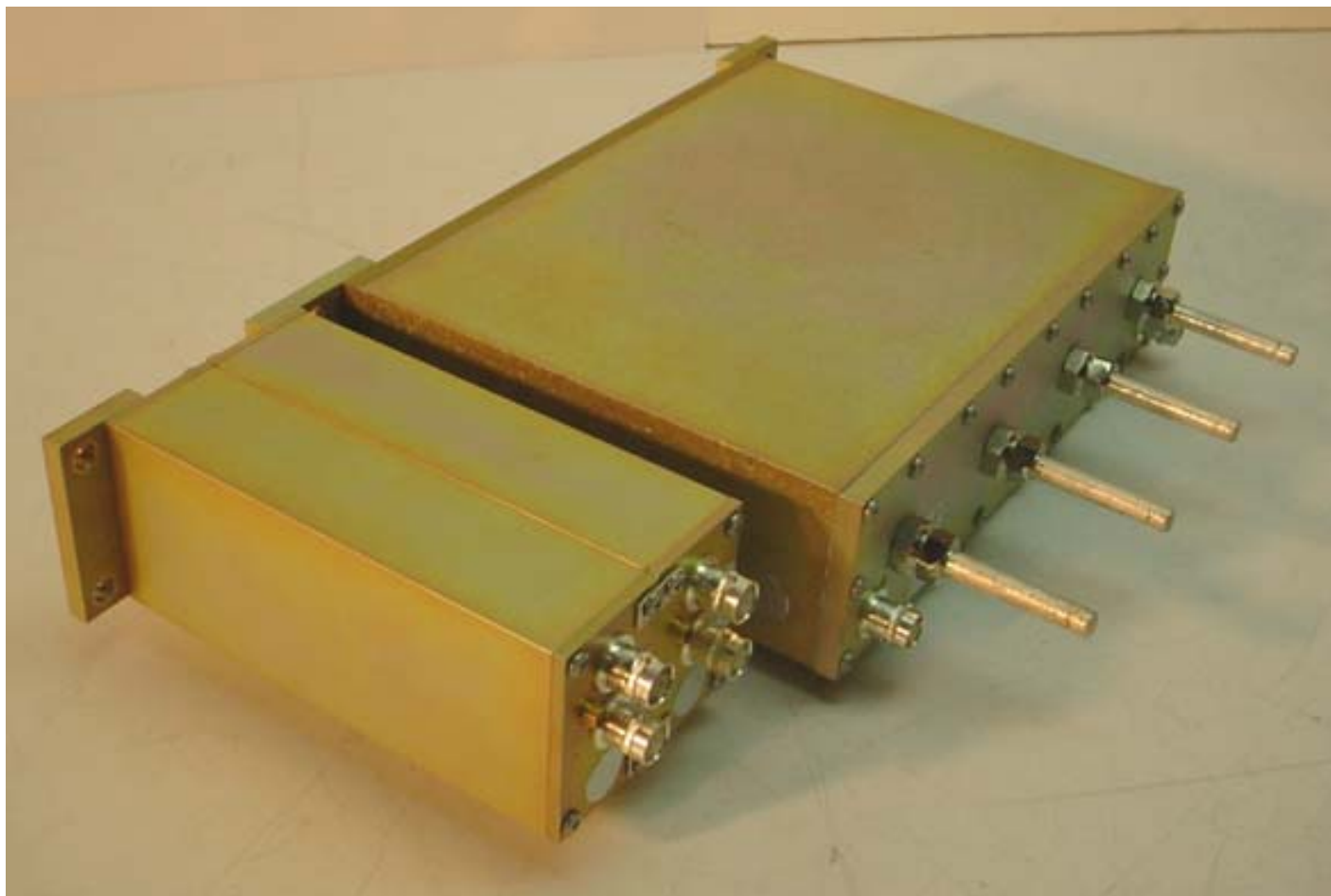
**TX RX Systems, Inc.
Signal Booster 2, Model 61-68-50
FCC ID: EZZ5PI616850
IC: 1940A-PI616850**

ANNEX 3 – INTERNAL PHOTOGRAPHS



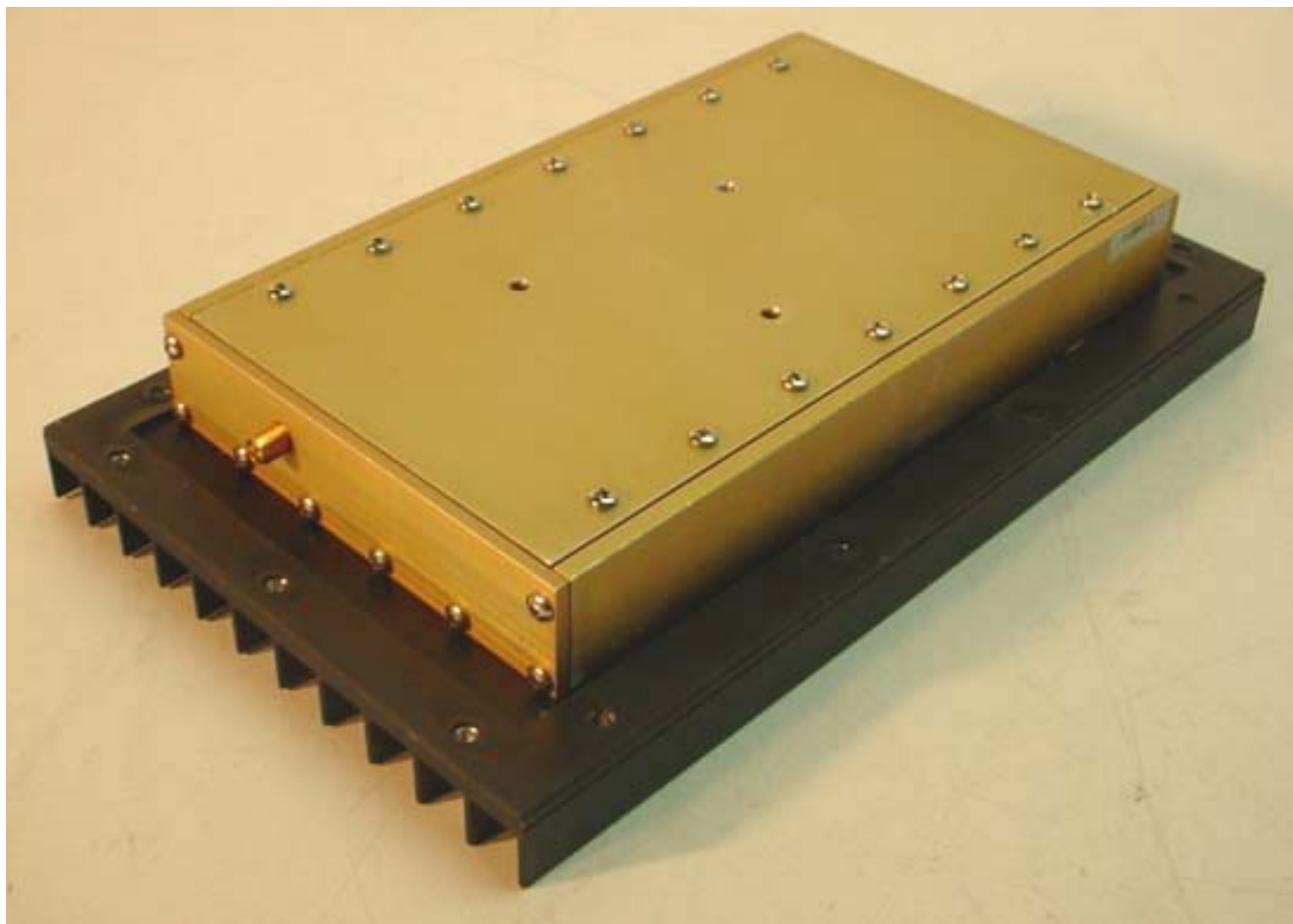
TX RX Systems, Inc.
Signal Booster 2, Model 61-68-50
FCC ID: EZZ5PI616850
IC: 1940A-PI616850

ANNEX 3 – INTERNAL PHOTOGRAPHS



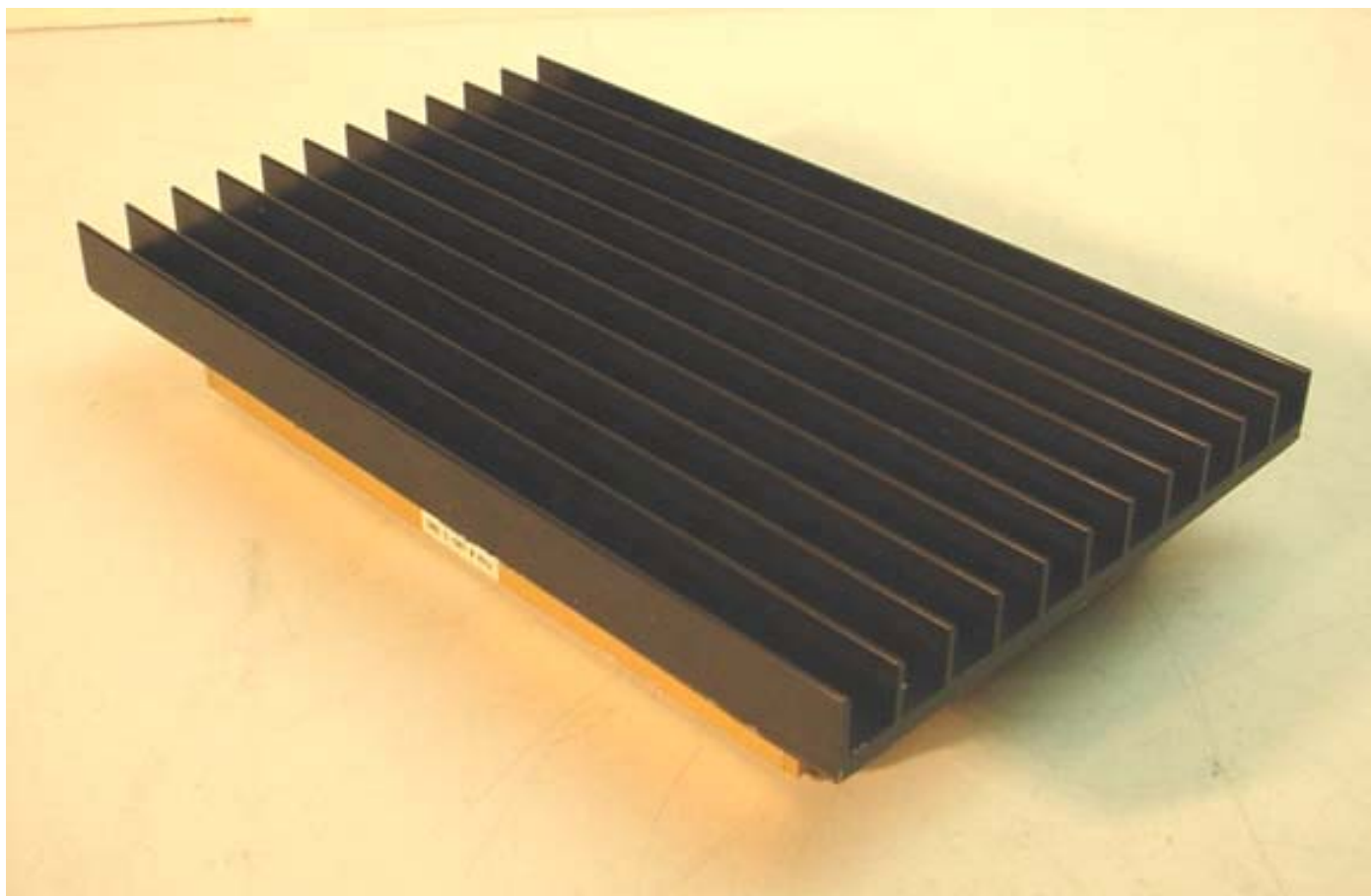
TX RX Systems, Inc.
Signal Booster 2, Model 61-68-50
FCC ID: EZZ5PI616850
IC: 1940A-PI616850

ANNEX 3 – INTERNAL PHOTOGRAPHS



TX RX Systems, Inc.
Signal Booster 2, Model 61-68-50
FCC ID: EZZ5PI616850
IC: 1940A-PI616850

ANNEX 3 – INTERNAL PHOTOGRAPHS



**TX RX Systems, Inc.
Signal Booster 2, Model 61-68-50
FCC ID: EZZ5PI616850
IC: 1940A-PI616850**

ANNEX 3 – INTERNAL PHOTOGRAPHS



**TX RX Systems, Inc.
Signal Booster 2, Model 61-68-50
FCC ID: EZZ5PI616850
IC: 1940A-PI616850**

ANNEX 3 – INTERNAL PHOTOGRAPHS



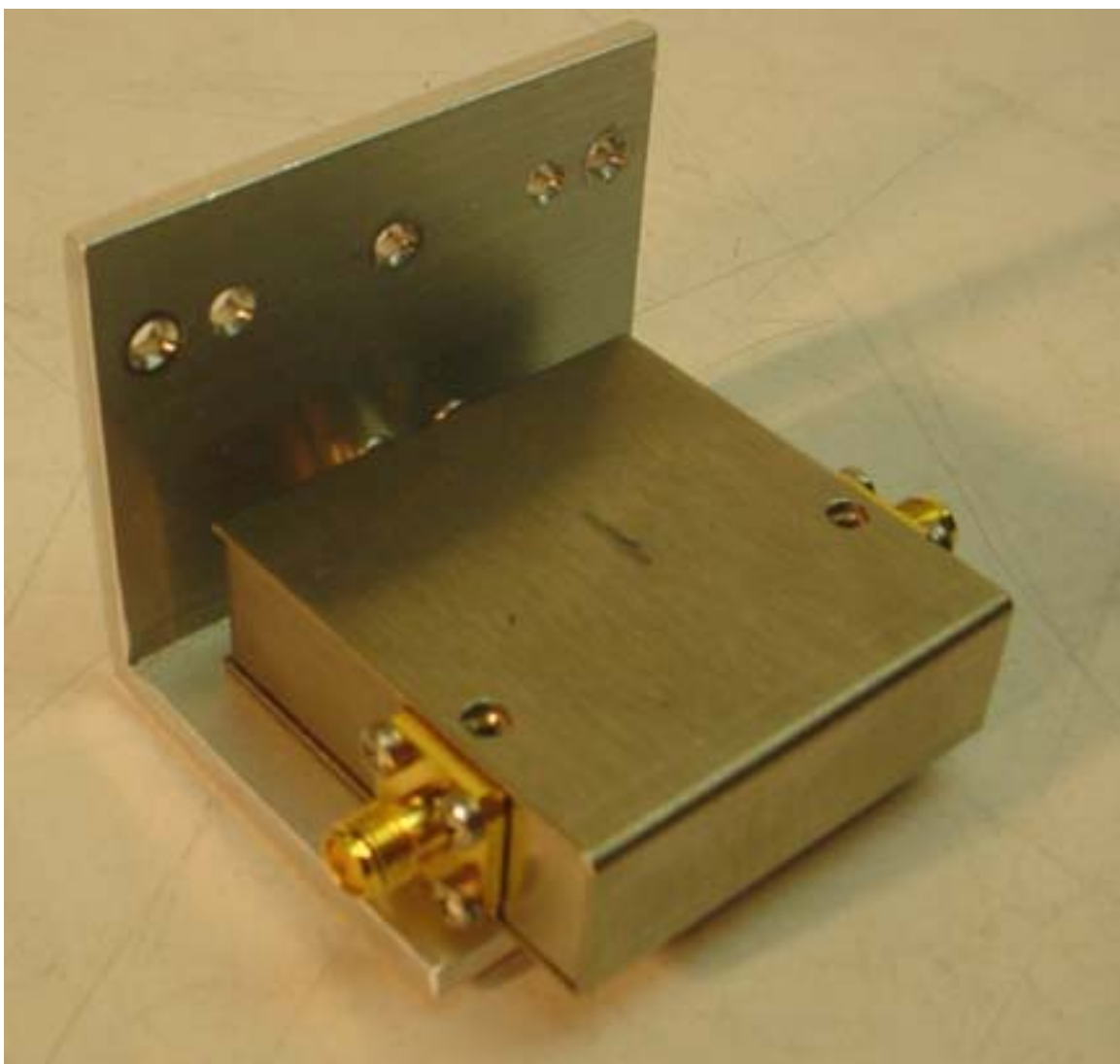
**TX RX Systems, Inc.
Signal Booster 2, Model 61-68-50
FCC ID: EZZ5PI616850
IC: 1940A-PI616850**

ANNEX 3 – INTERNAL PHOTOGRAPHS



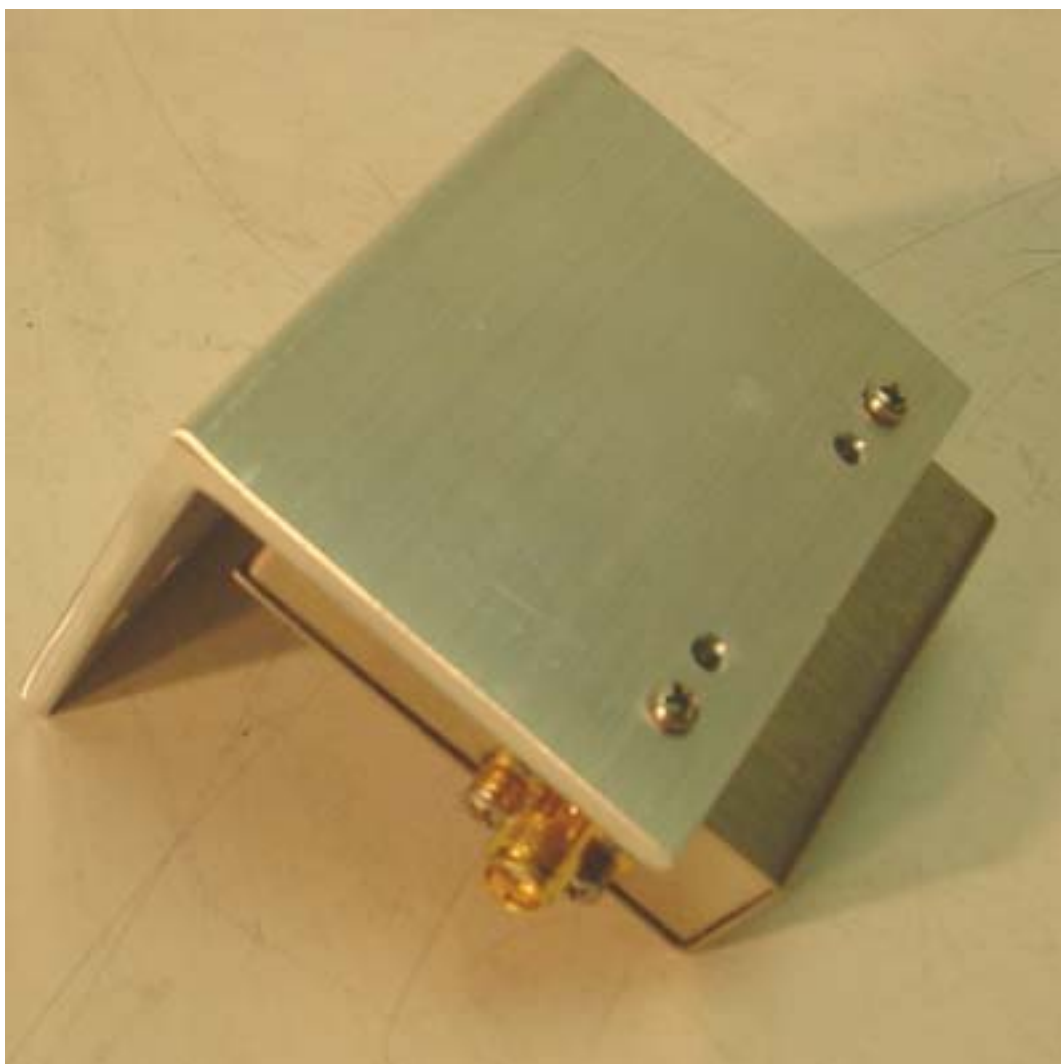
**TX RX Systems, Inc.
Signal Booster 2, Model 61-68-50
FCC ID: EZZ5PI616850
IC: 1940A-PI616850**

ANNEX 3 – INTERNAL PHOTOGRAPHS



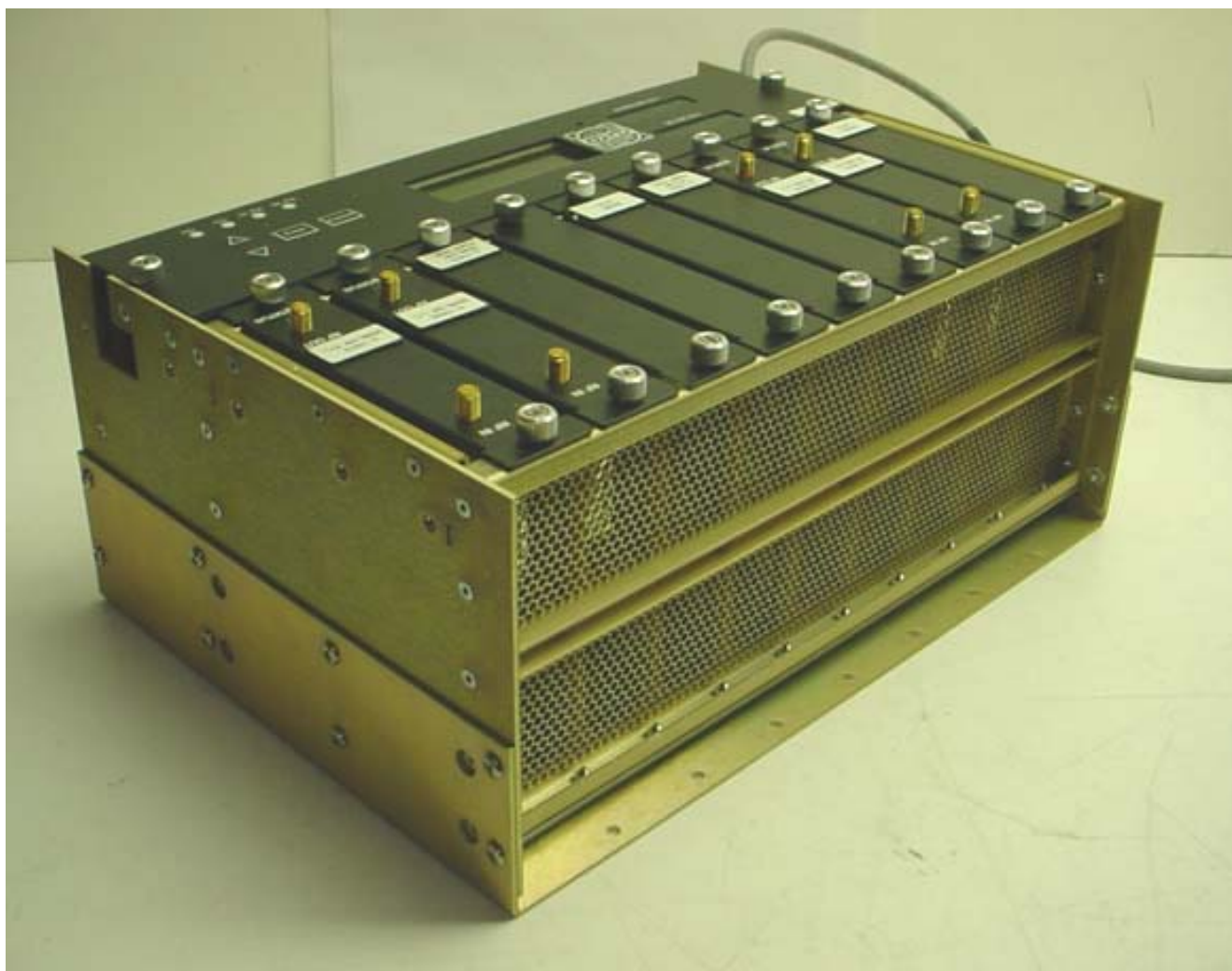
**TX RX Systems, Inc.
Signal Booster 2, Model 61-68-50
FCC ID: EZZ5PI616850
IC: 1940A-PI616850**

ANNEX 3 – INTERNAL PHOTOGRAPHS



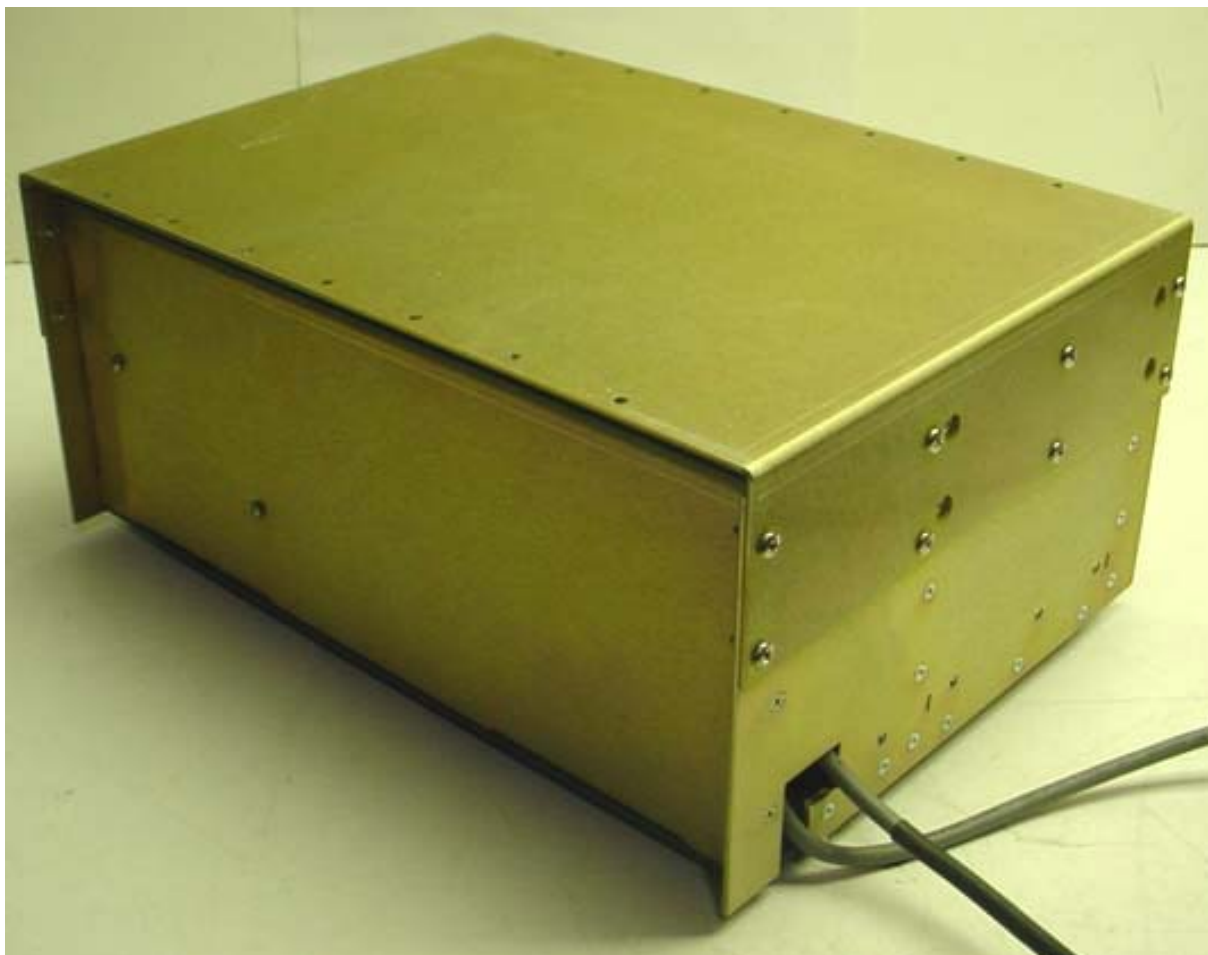
**TX RX Systems, Inc.
Signal Booster 2, Model 61-68-50
FCC ID: EZZ5PI616850
IC: 1940A-PI616850**

ANNEX 3 – INTERNAL PHOTOGRAPHS



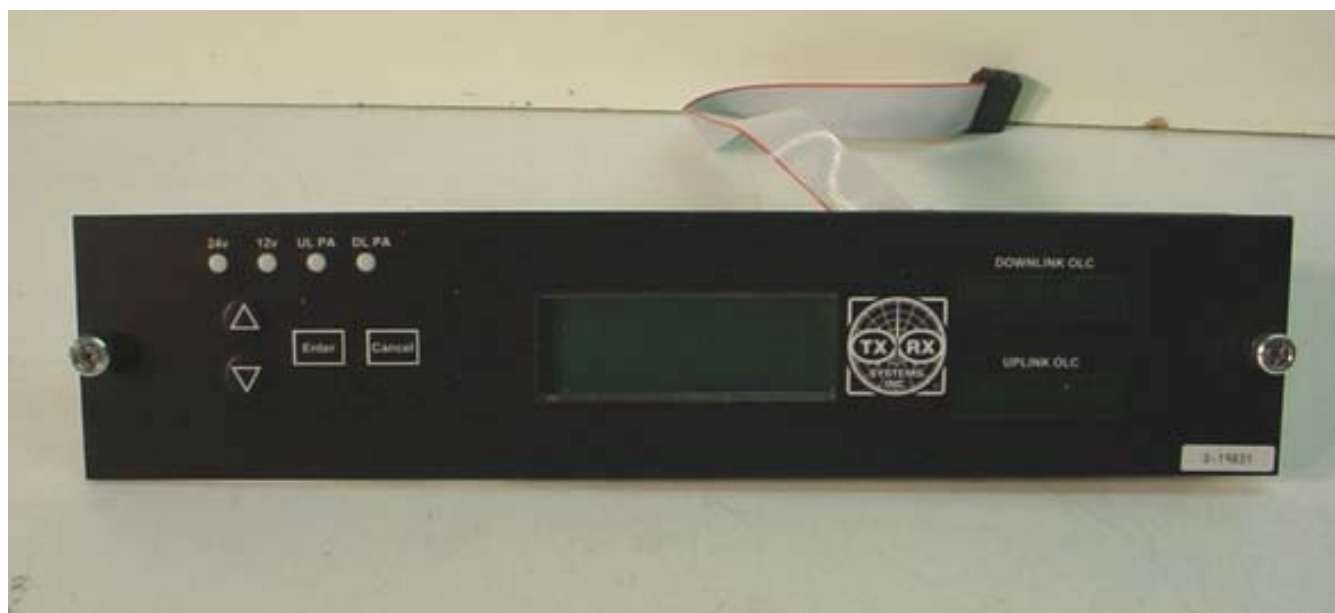
TX RX Systems, Inc.
Signal Booster 2, Model 61-68-50
FCC ID: EZZ5PI616850
IC: 1940A-PI616850

ANNEX 3 – INTERNAL PHOTOGRAPHS



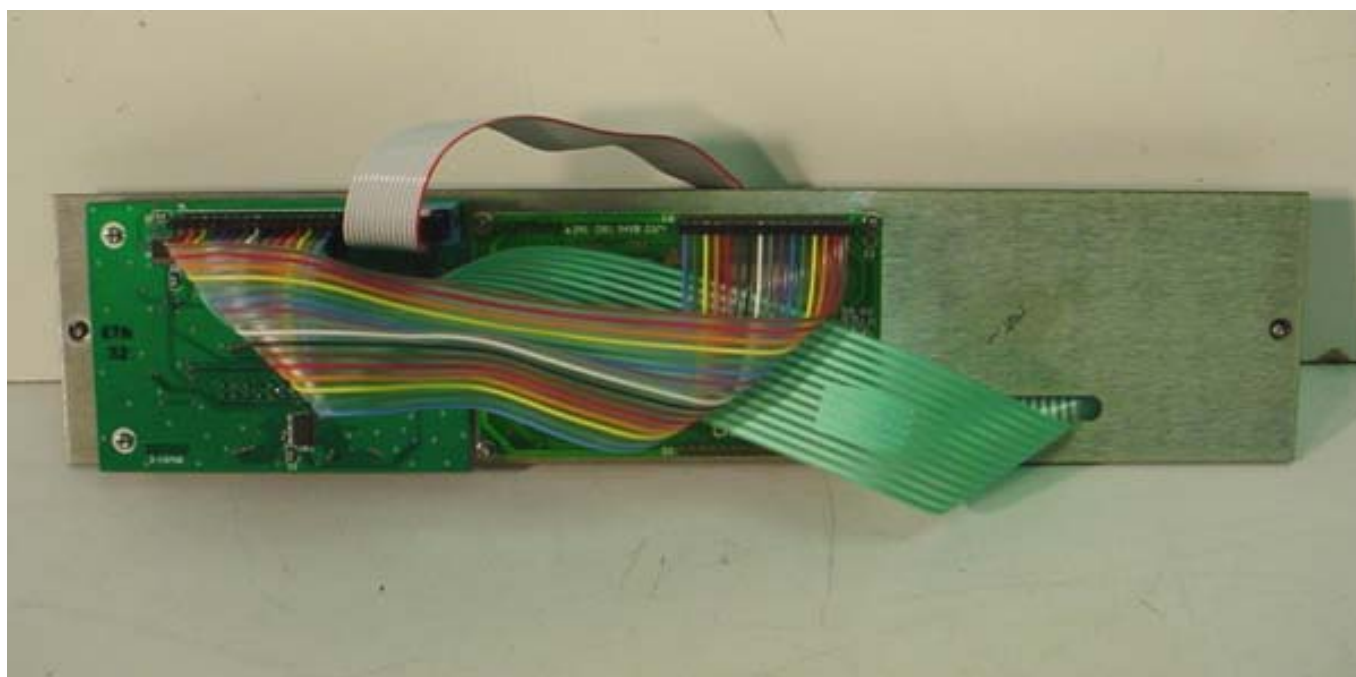
TX RX Systems, Inc.
Signal Booster 2, Model 61-68-50
FCC ID: EZZ5PI616850
IC: 1940A-PI616850

ANNEX 3 – INTERNAL PHOTOGRAPHS



TX RX Systems, Inc.
Signal Booster 2, Model 61-68-50
FCC ID: EZZ5PI616850
IC: 1940A-PI616850

ANNEX 3 – INTERNAL PHOTOGRAPHS



TX RX Systems, Inc.
Signal Booster 2, Model 61-68-50
FCC ID: EZZ5PI616850
IC: 1940A-PI616850

ANNEX 3 – INTERNAL PHOTOGRAPHS



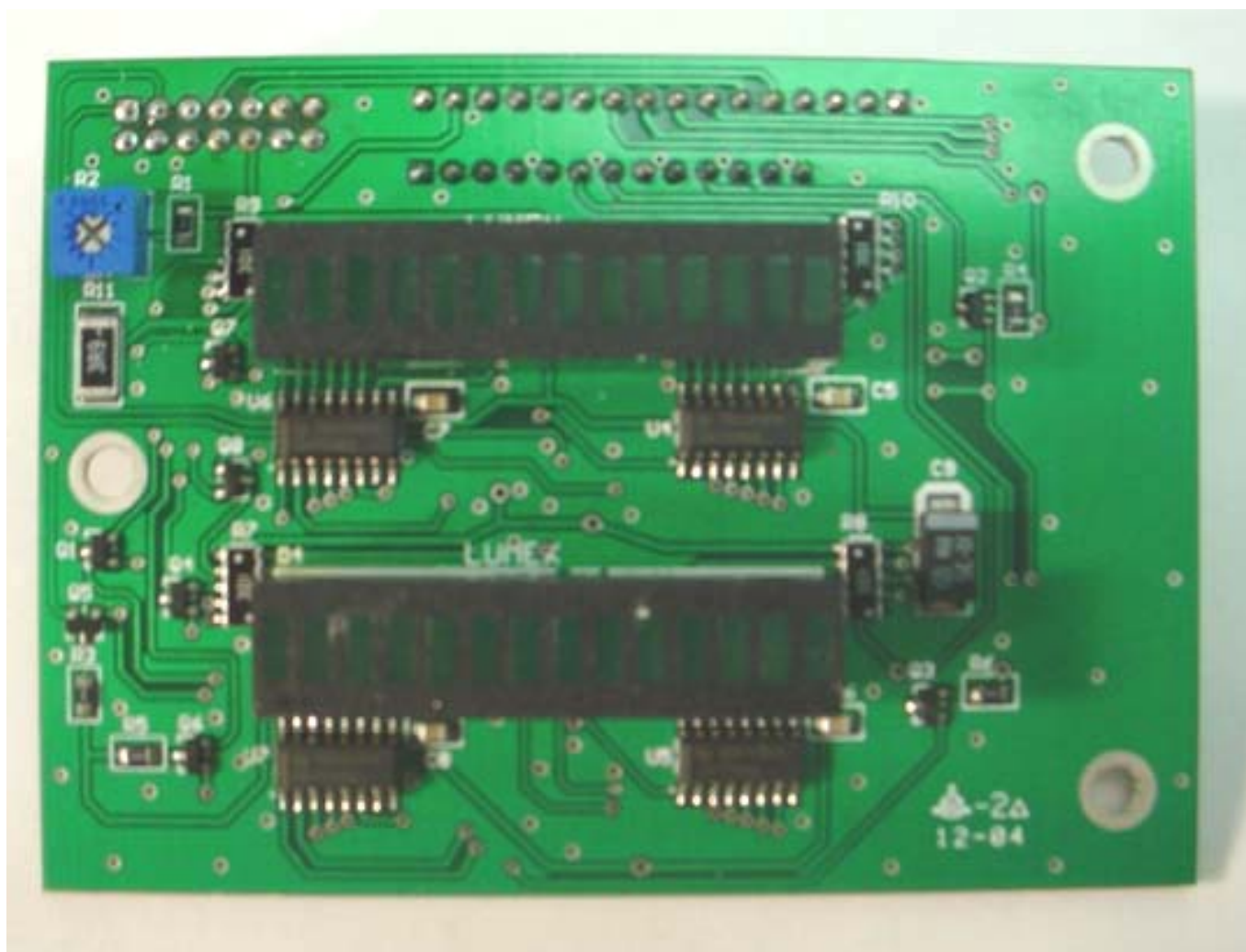
**TX RX Systems, Inc.
Signal Booster 2, Model 61-68-50
FCC ID: EZZ5PI616850
IC: 1940A-PI616850**

ANNEX 3 – INTERNAL PHOTOGRAPHS



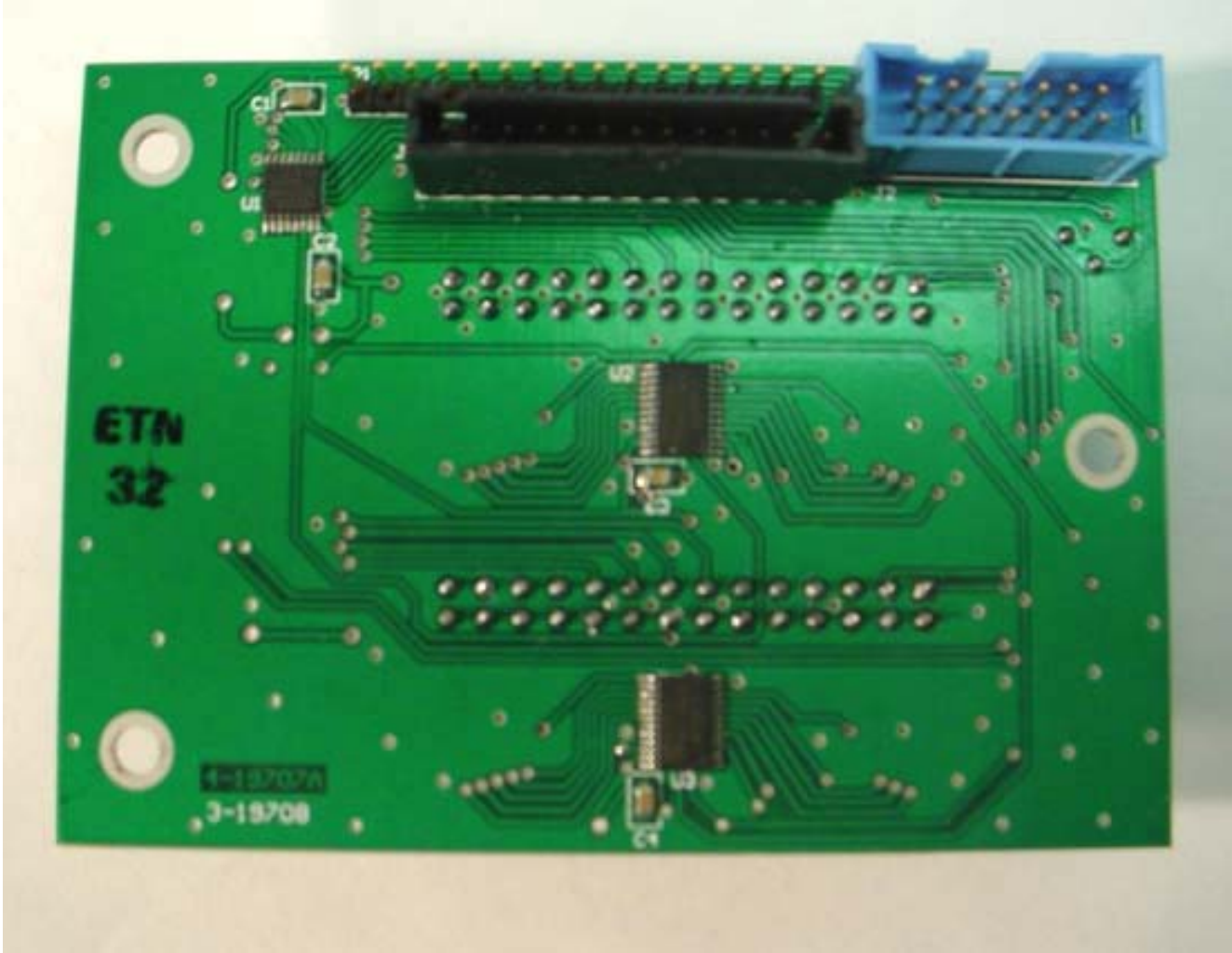
TX RX Systems, Inc.
Signal Booster 2, Model 61-68-50
FCC ID: EZZ5PI616850
IC: 1940A-PI616850

ANNEX 3 – INTERNAL PHOTOGRAPHS



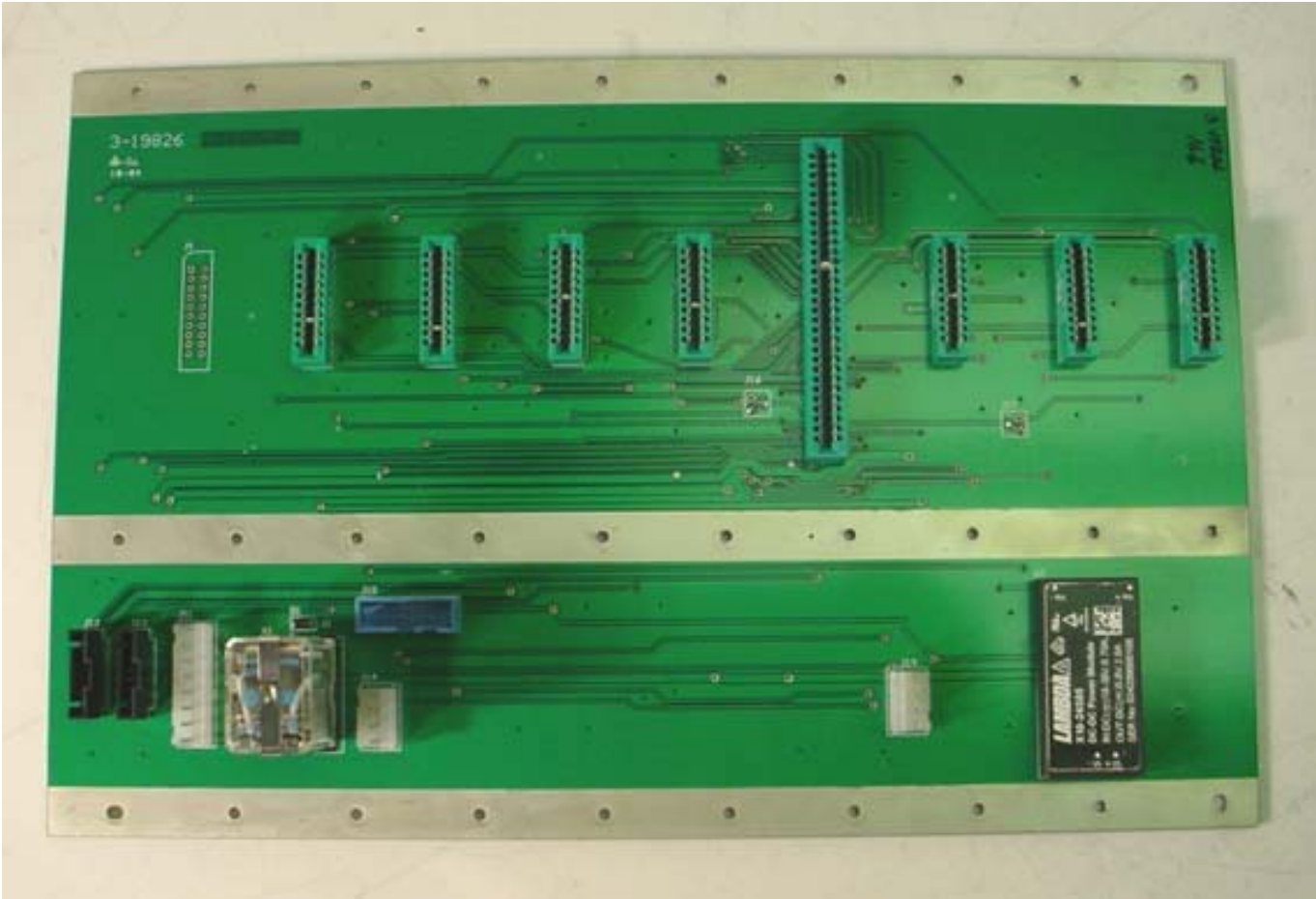
TX RX Systems, Inc.
Signal Booster 2, Model 61-68-50
FCC ID: EZZ5PI616850
IC: 1940A-PI616850

ANNEX 3 – INTERNAL PHOTOGRAPHS



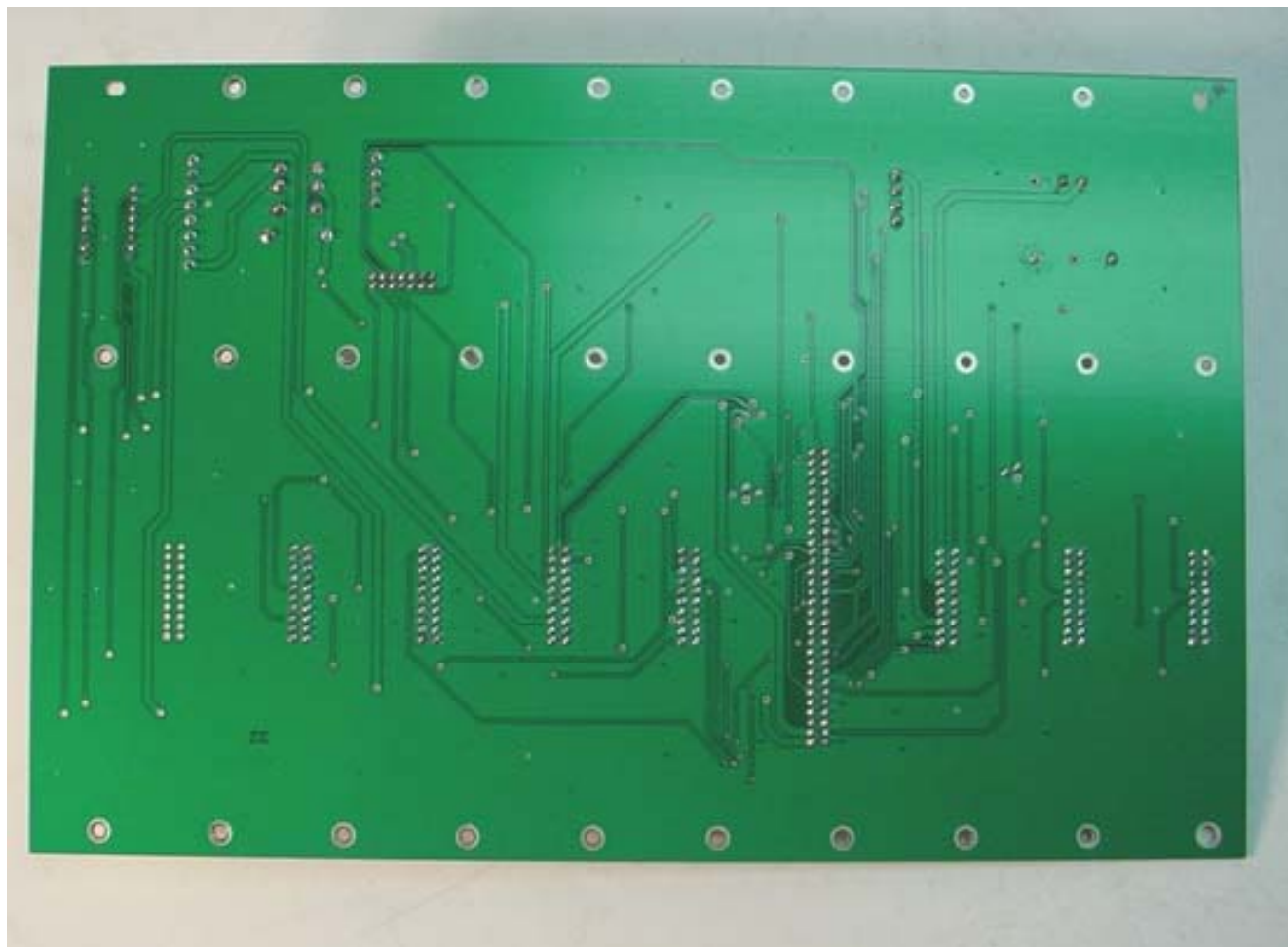
TX RX Systems, Inc.
Signal Booster 2, Model 61-68-50
FCC ID: EZZ5PI616850
IC: 1940A-PI616850

ANNEX 3 – INTERNAL PHOTOGRAPHS



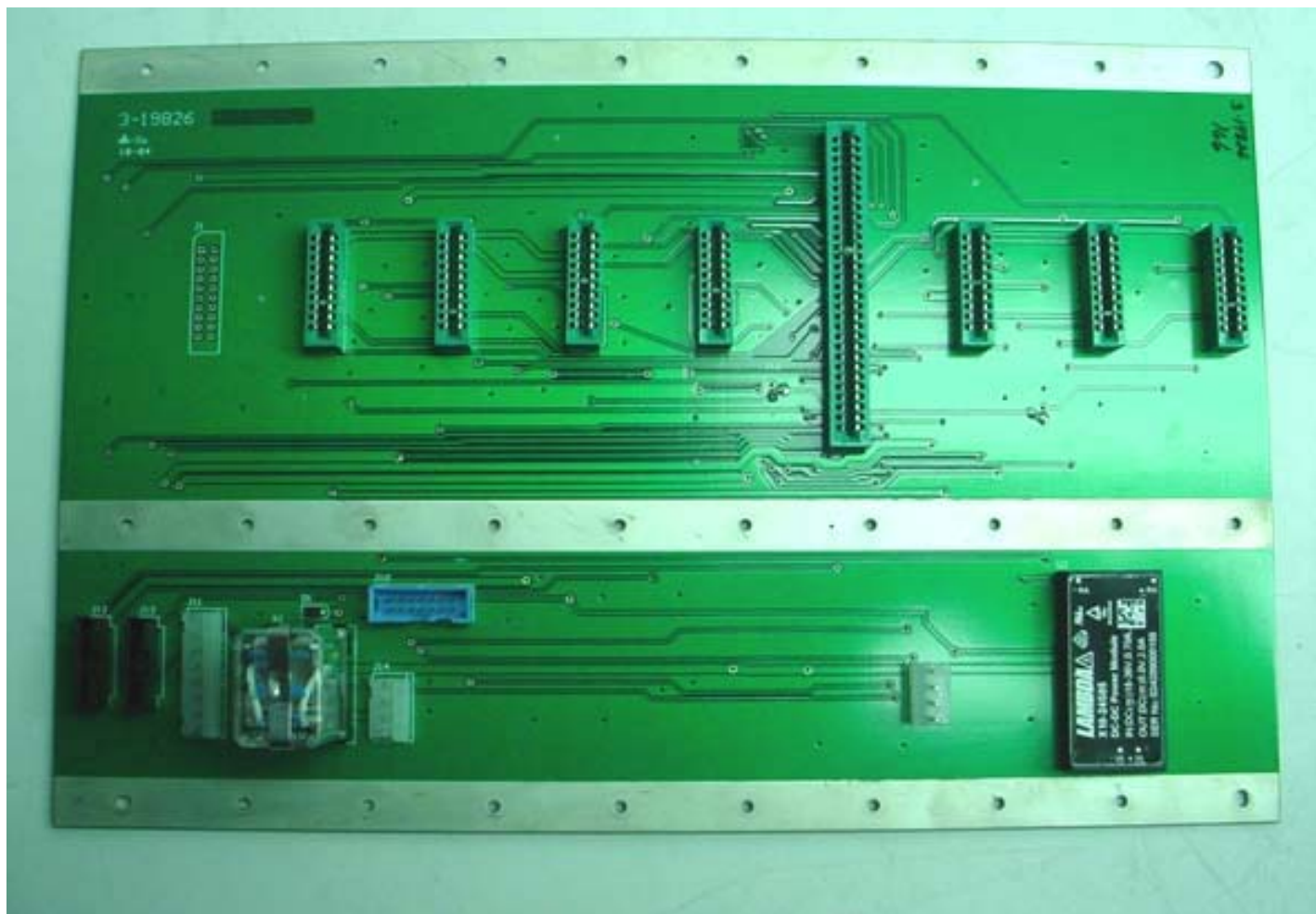
**TX RX Systems, Inc.
Signal Booster 2, Model 61-68-50
FCC ID: EZZ5PI616850
IC: 1940A-PI616850**

ANNEX 3 – INTERNAL PHOTOGRAPHS



TX RX Systems, Inc.
Signal Booster 2, Model 61-68-50
FCC ID: EZZ5PI616850
IC: 1940A-PI616850

ANNEX 3 – INTERNAL PHOTOGRAPHS



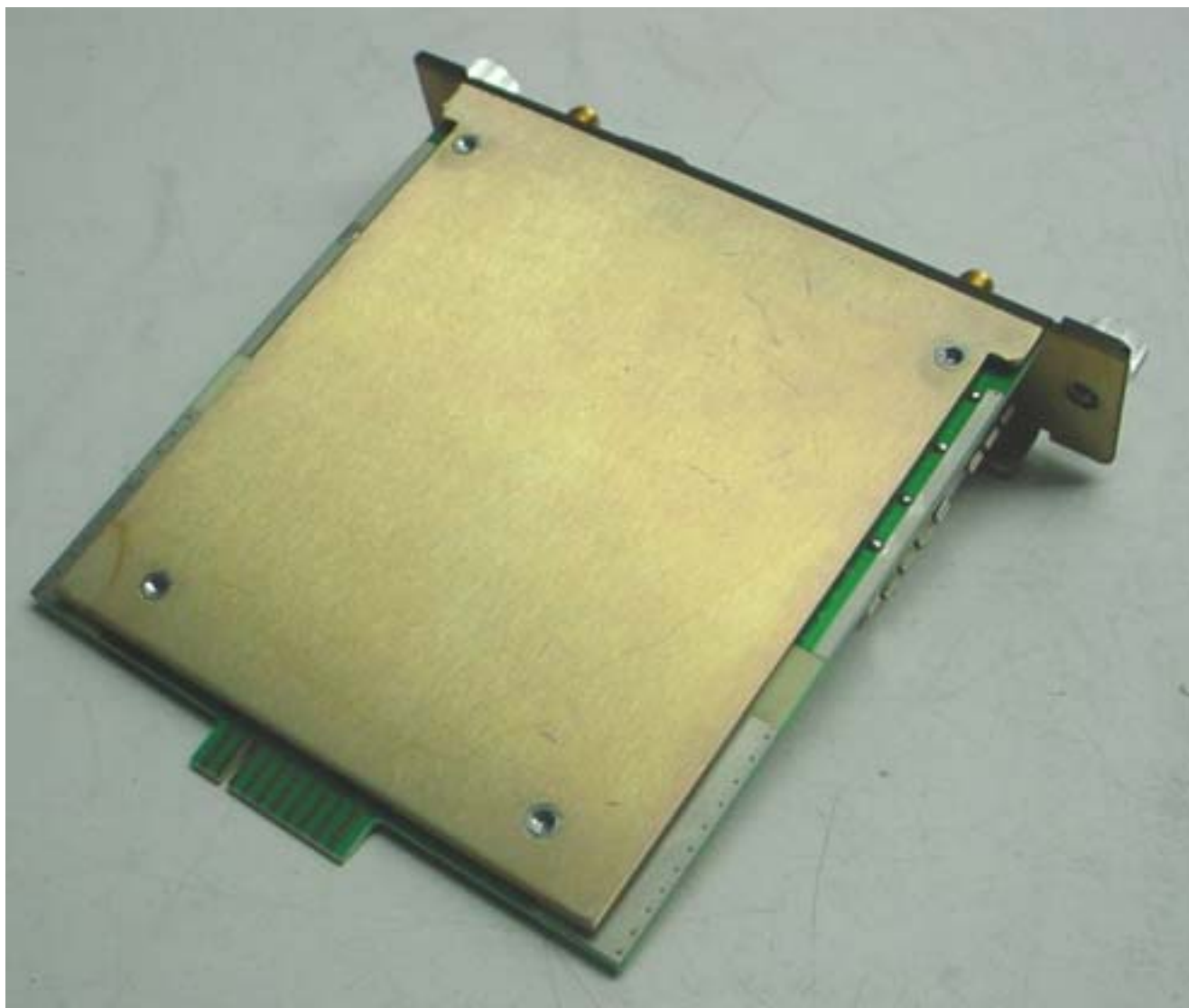
TX RX Systems, Inc.
Signal Booster 2, Model 61-68-50
FCC ID: EZZ5PI616850
IC: 1940A-PI616850

ANNEX 3 – INTERNAL PHOTOGRAPHS



TX RX Systems, Inc.
Signal Booster 2, Model 61-68-50
FCC ID: EZZ5PI616850
IC: 1940A-PI616850

ANNEX 3 – INTERNAL PHOTOGRAPHS



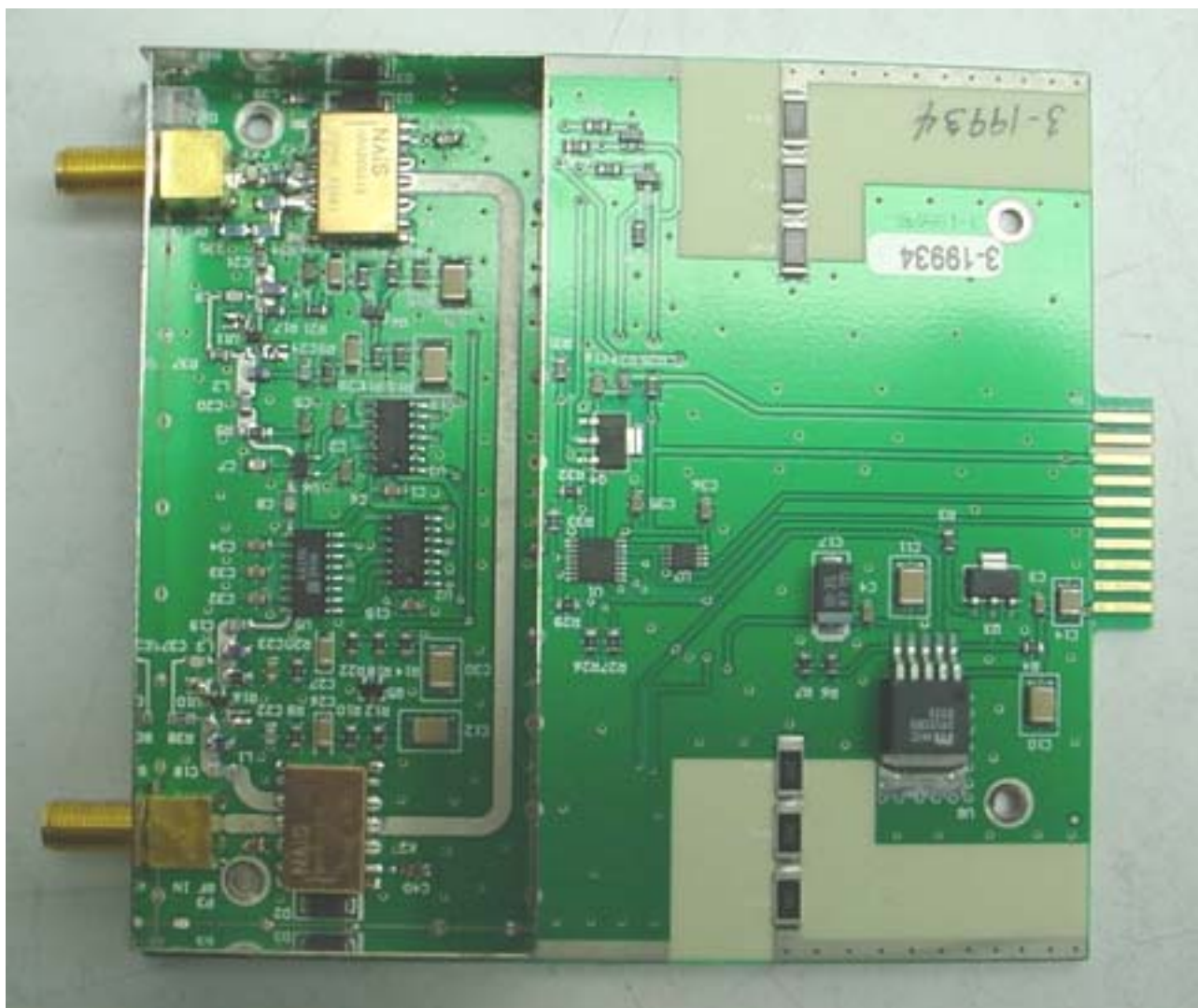
**TX RX Systems, Inc.
Signal Booster 2, Model 61-68-50
FCC ID: EZZ5PI616850
IC: 1940A-PI616850**

ANNEX 3 – INTERNAL PHOTOGRAPHS



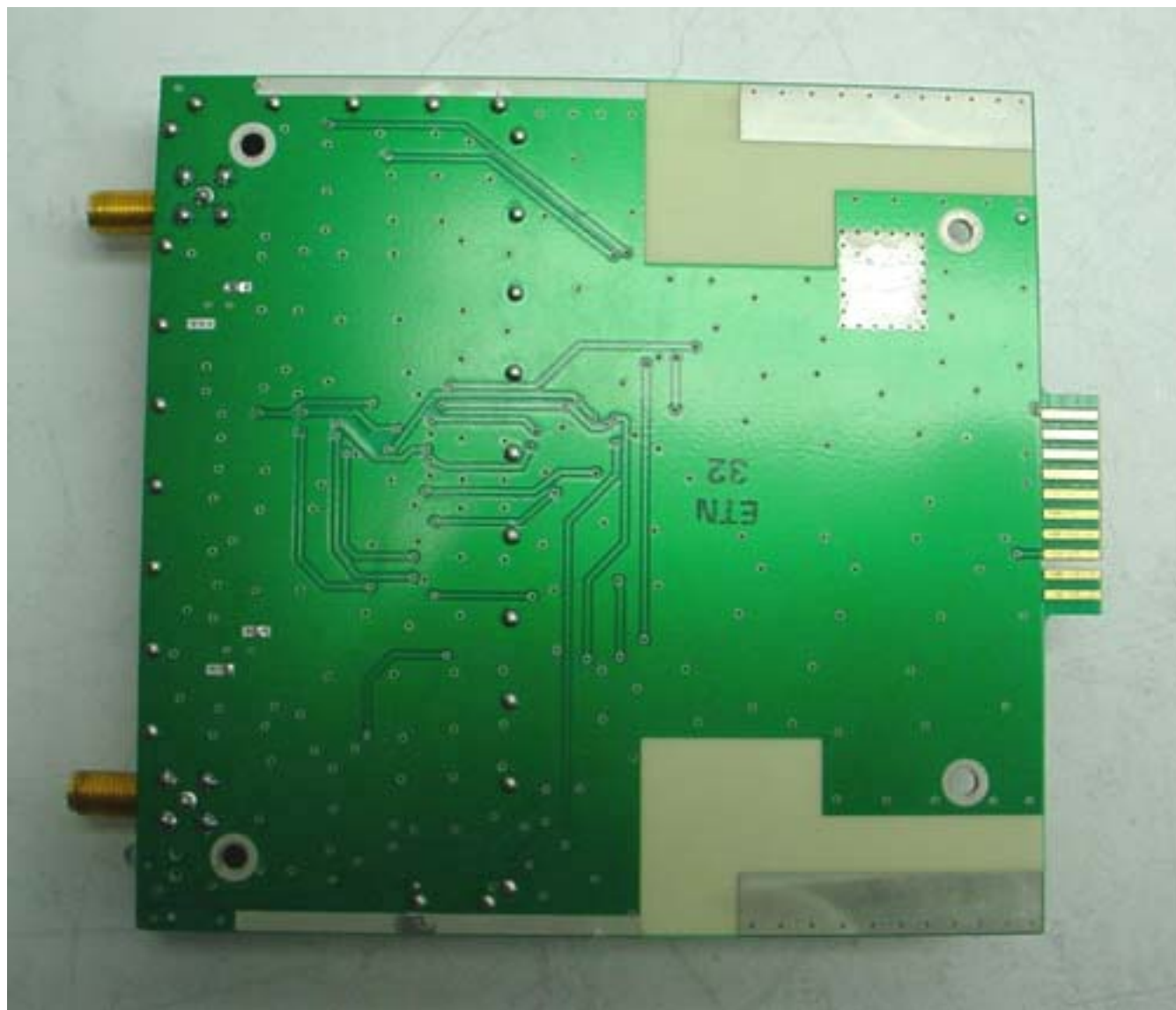
**TX RX Systems, Inc.
Signal Booster 2, Model 61-68-50
FCC ID: EZZ5PI616850
IC: 1940A-PI616850**

ANNEX 3 – INTERNAL PHOTOGRAPHS

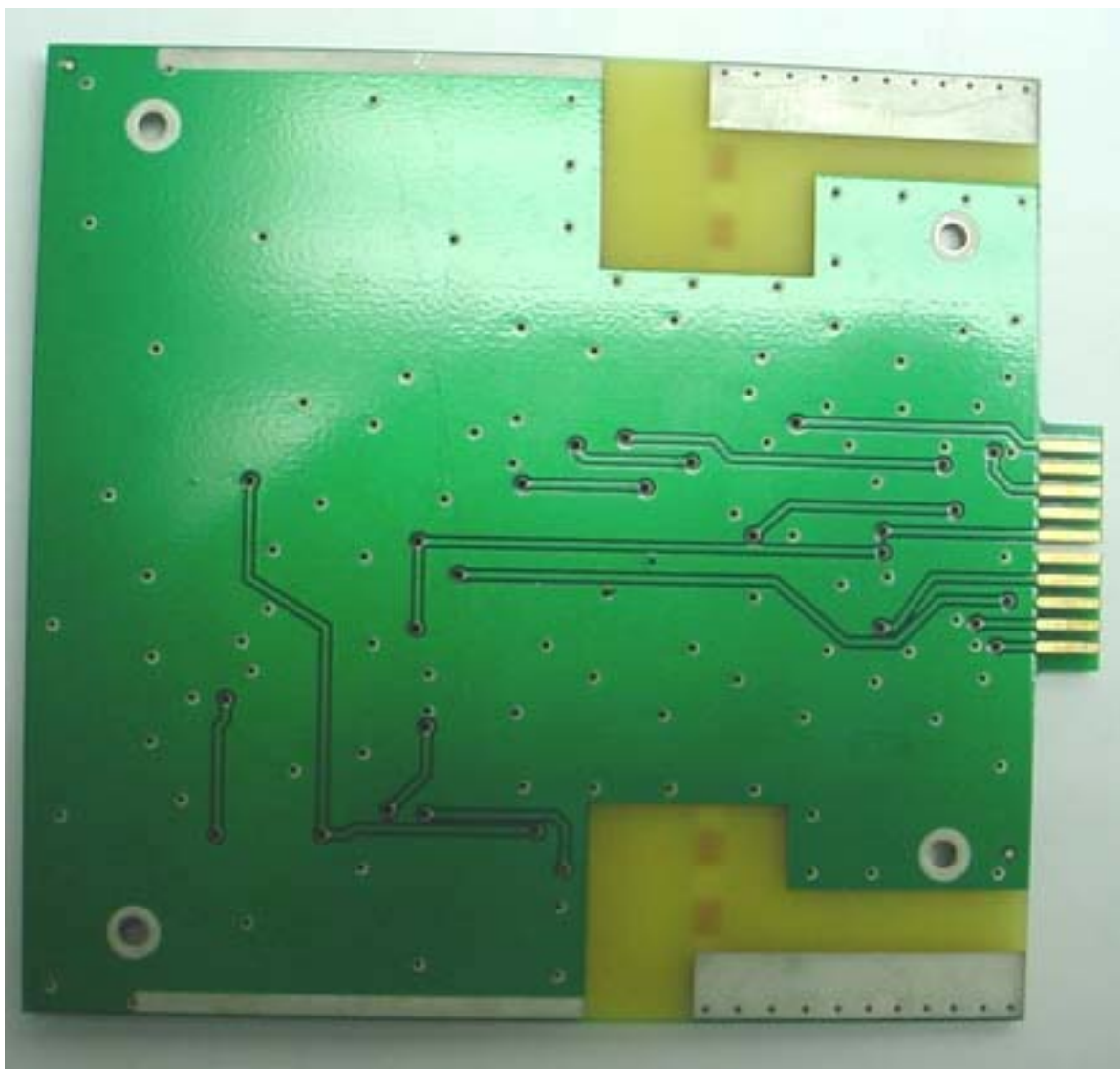


**TX RX Systems, Inc.
Signal Booster 2, Model 61-68-50
FCC ID: EZZ5PI616850
IC: 1940A-PI616850**

ANNEX 3 – INTERNAL PHOTOGRAPHS



ANNEX 3 – INTERNAL PHOTOGRAPHS



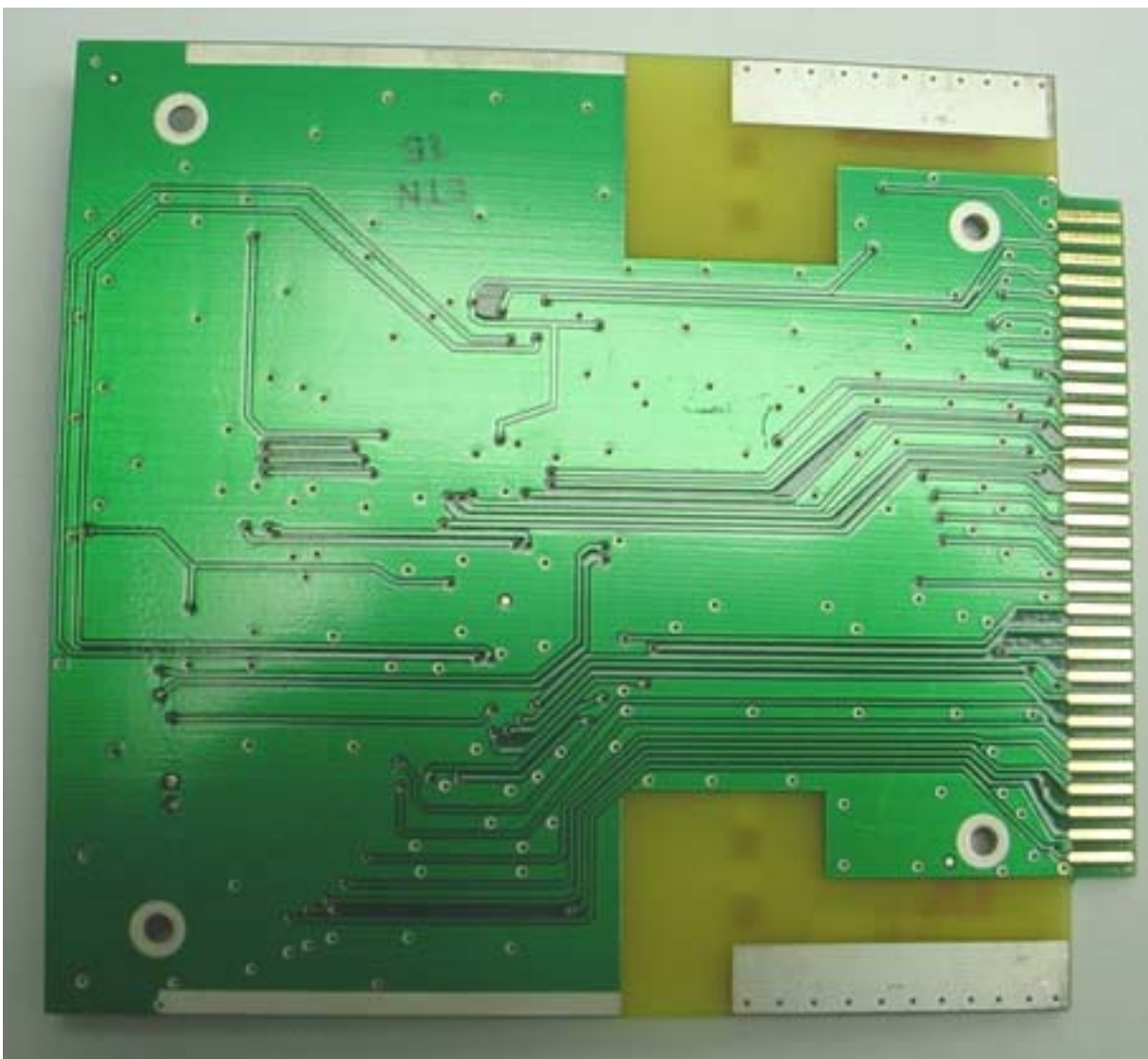
TX RX Systems, Inc.
Signal Booster 2, Model 61-68-50
FCC ID: EZZ5PI616850
IC: 1940A-PI616850

ANNEX 3 – INTERNAL PHOTOGRAPHS



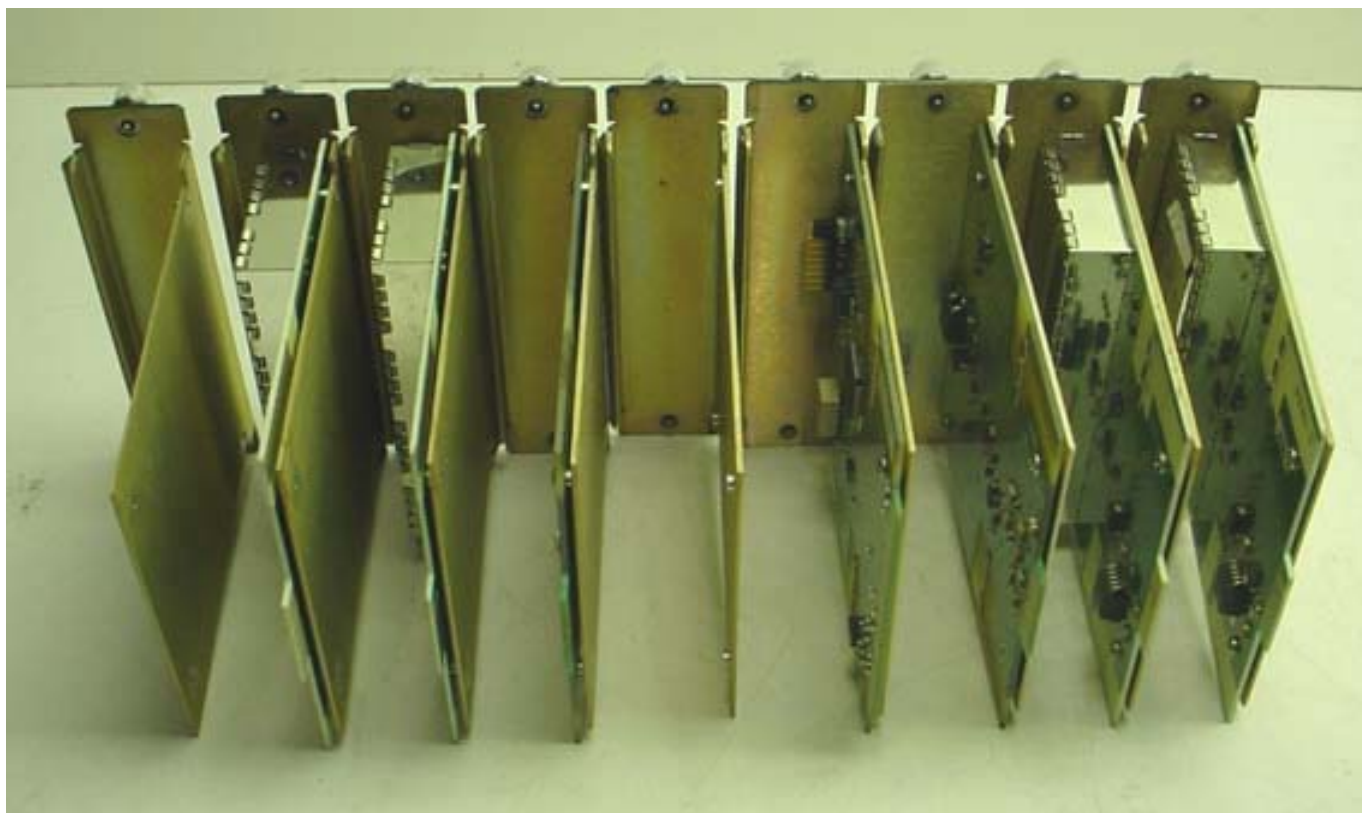
TX RX Systems, Inc.
Signal Booster 2, Model 61-68-50
FCC ID: EZZ5PI616850
IC: 1940A-PI616850

ANNEX 3 – INTERNAL PHOTOGRAPHS



TX RX Systems, Inc.
Signal Booster 2, Model 61-68-50
FCC ID: EZZ5PI616850
IC: 1940A-PI616850

ANNEX 3 – INTERNAL PHOTOGRAPHS



TX RX Systems, Inc.
Signal Booster 2, Model 61-68-50
FCC ID: EZZ5PI616850
IC: 1940A-PI616850

ANNEX 3 – INTERNAL PHOTOGRAPHS



TX RX Systems, Inc.
Signal Booster 2, Model 61-68-50
FCC ID: EZZ5PI616850
IC: 1940A-PI616850