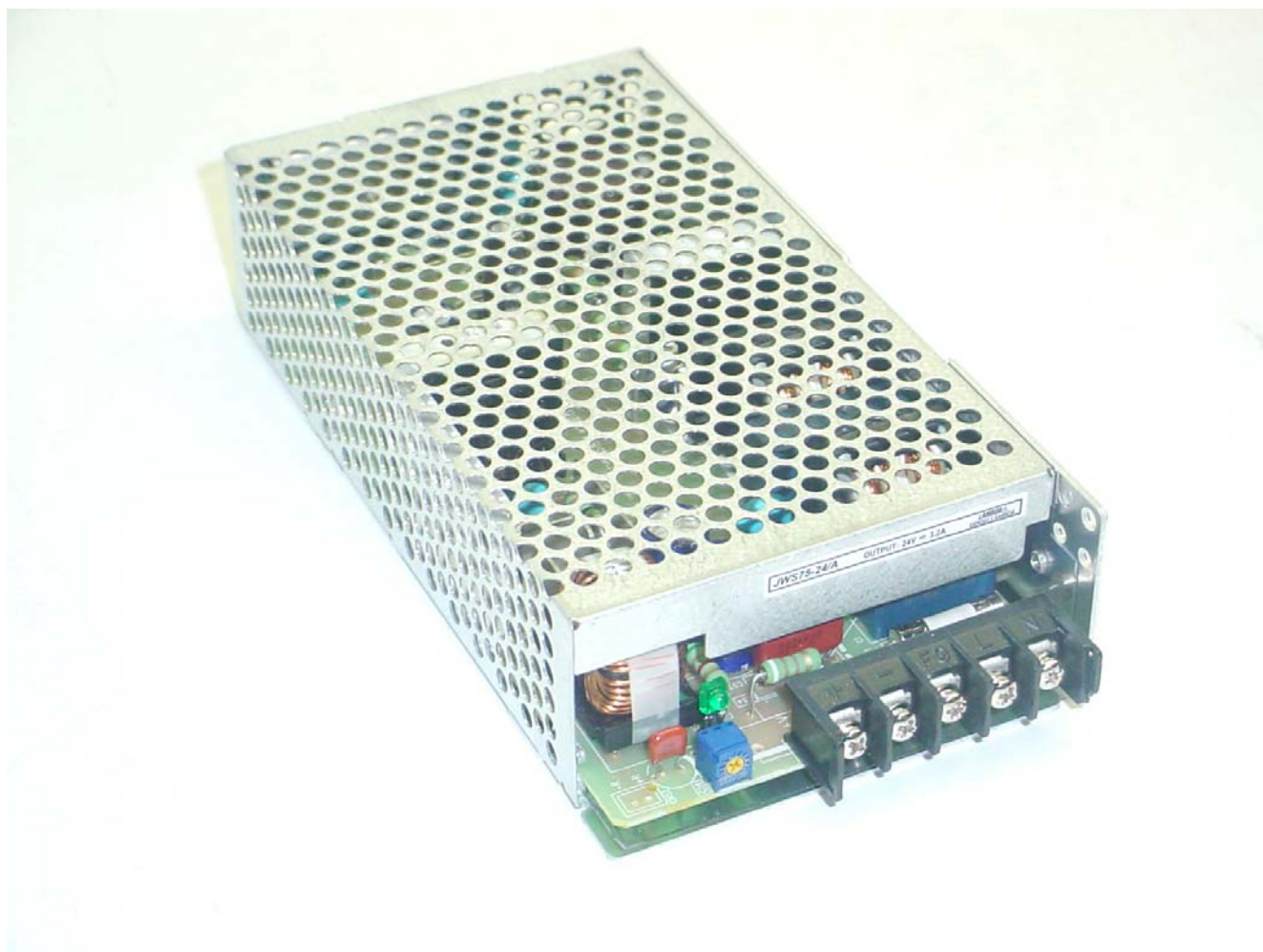


ANNEX 3 – INTERNAL PHOTOGRAPHS



TX RX Systems, Inc.
Signal Booster 2, Model 61-89A-50-A18-G1
FCC ID: EZZ5PI031202
IC: 1940A-PI031202

ANNEX 3 – INTERNAL PHOTOGRAPHS



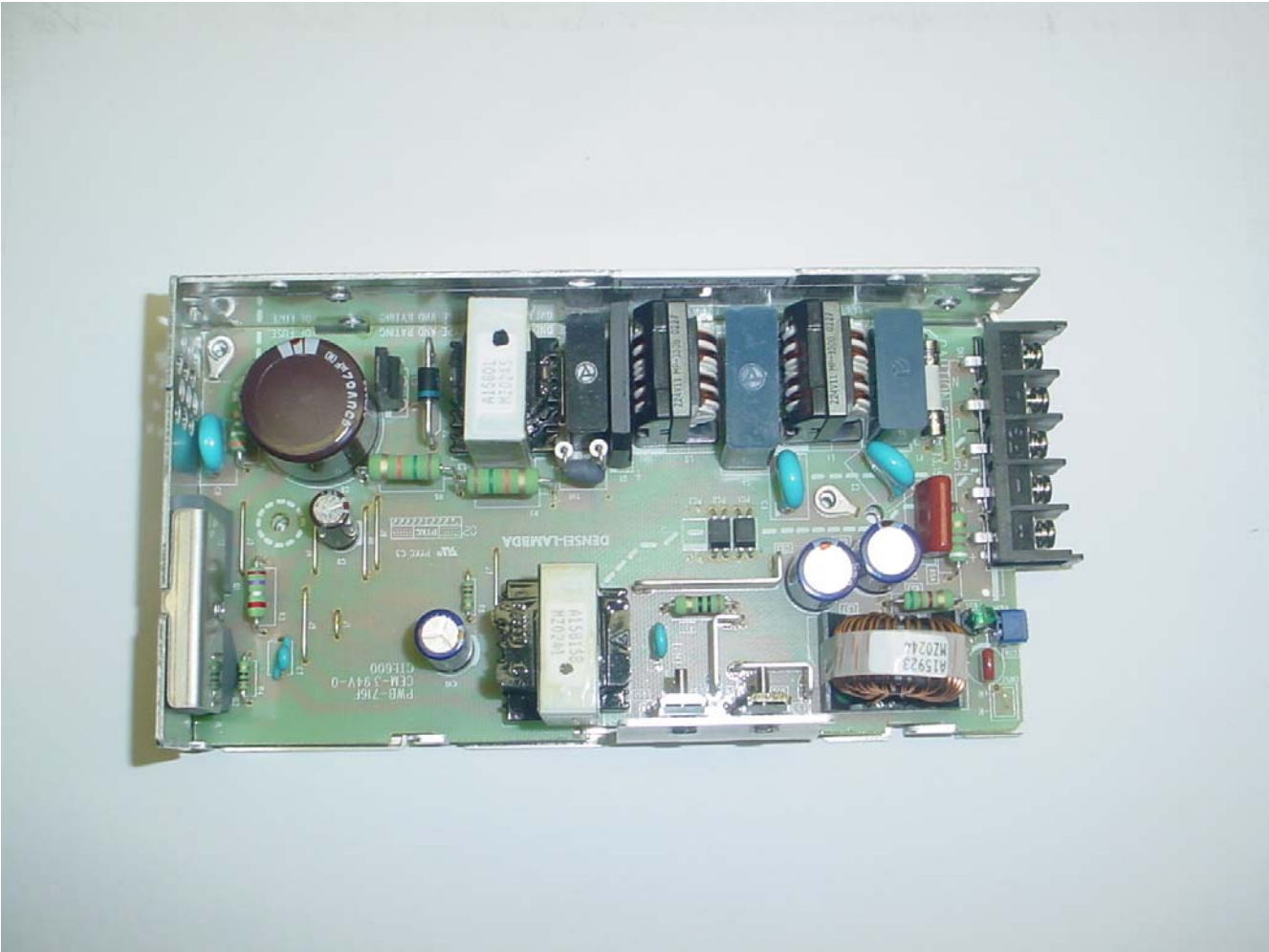
TX RX Systems, Inc.
Signal Booster 2, Model 61-89A-50-A18-G1
FCC ID: EZZ5PI031202
IC: 1940A-PI031202

ANNEX 3 – INTERNAL PHOTOGRAPHS



TX RX Systems, Inc.
Signal Booster 2, Model 61-89A-50-A18-G1
FCC ID: EZZ5PI031202
IC: 1940A-PI031202

ANNEX 3 – INTERNAL PHOTOGRAPHS



**TX RX Systems, Inc.
Signal Booster 2, Model 61-89A-50-A18-G1
FCC ID: EZZ5PI031202
IC: 1940A-PI031202**

ANNEX 3 – INTERNAL PHOTOGRAPHS



**TX RX Systems, Inc.
Signal Booster 2, Model 61-89A-50-A18-G1
FCC ID: EZZ5PI031202
IC: 1940A-PI031202**

ANNEX 3 – INTERNAL PHOTOGRAPHS



**TX RX Systems, Inc.
Signal Booster 2, Model 61-89A-50-A18-G1
FCC ID: EZZ5PI031202
IC: 1940A-PI031202**

ANNEX 3 – INTERNAL PHOTOGRAPHS



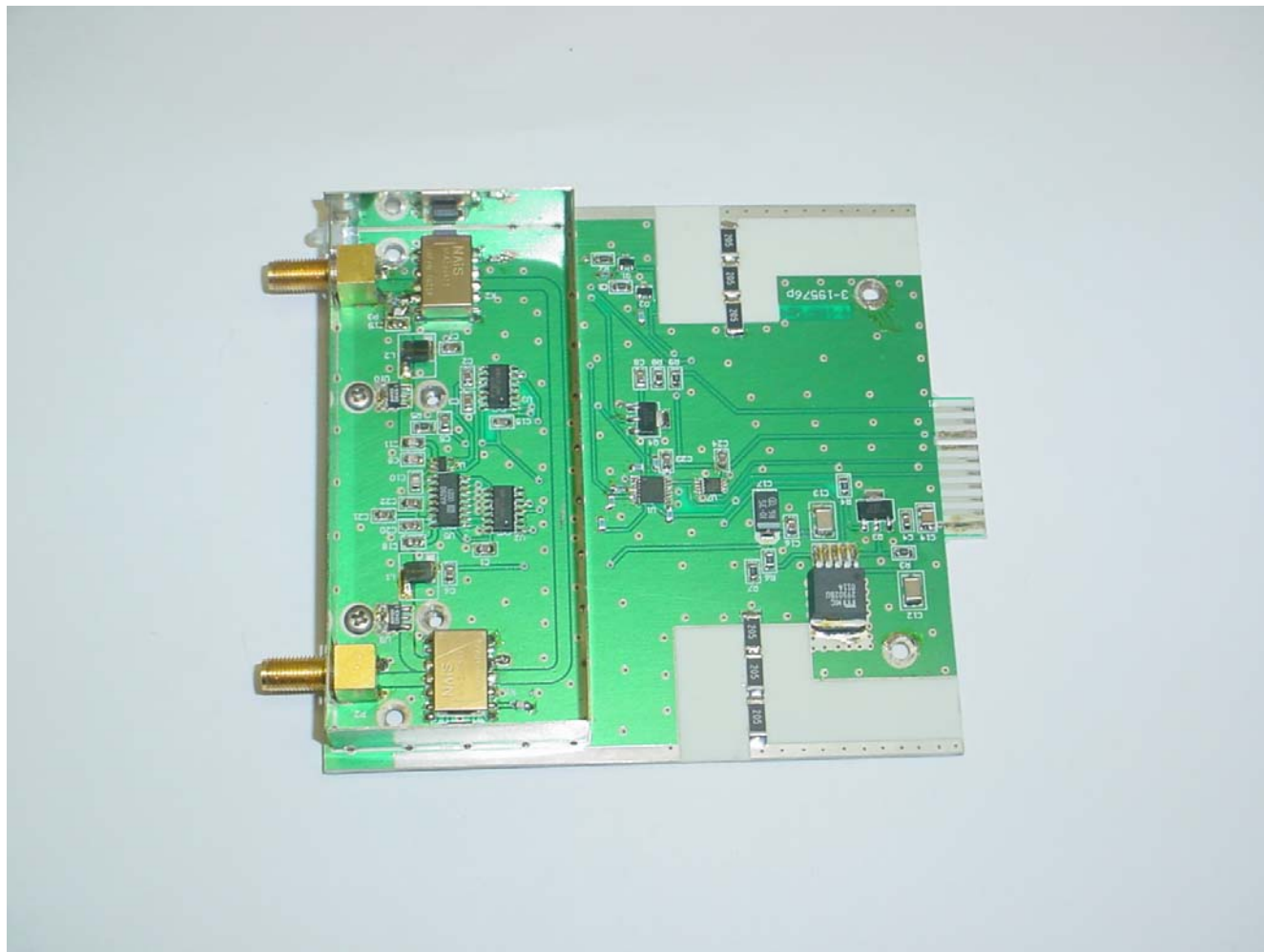
**TX RX Systems, Inc.
Signal Booster 2, Model 61-89A-50-A18-G1
FCC ID: EZZ5PI031202
IC: 1940A-PI031202**

ANNEX 3 – INTERNAL PHOTOGRAPHS



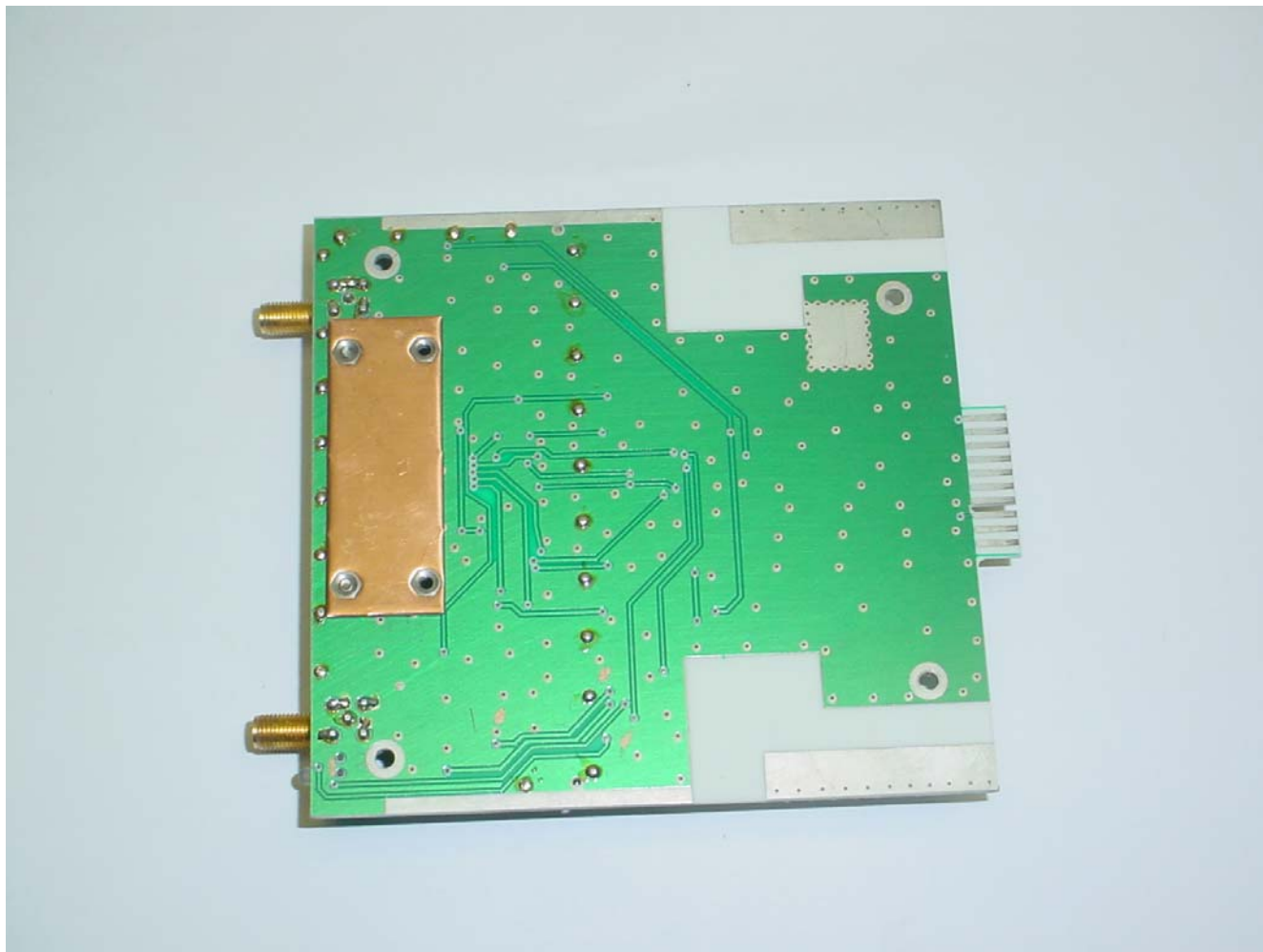
TX RX Systems, Inc.
Signal Booster 2, Model 61-89A-50-A18-G1
FCC ID: EZZ5PI031202
IC: 1940A-PI031202

ANNEX 3 – INTERNAL PHOTOGRAPHS



TX RX Systems, Inc.
Signal Booster 2, Model 61-89A-50-A18-G1
FCC ID: EZZ5PI031202
IC: 1940A-PI031202

ANNEX 3 – INTERNAL PHOTOGRAPHS

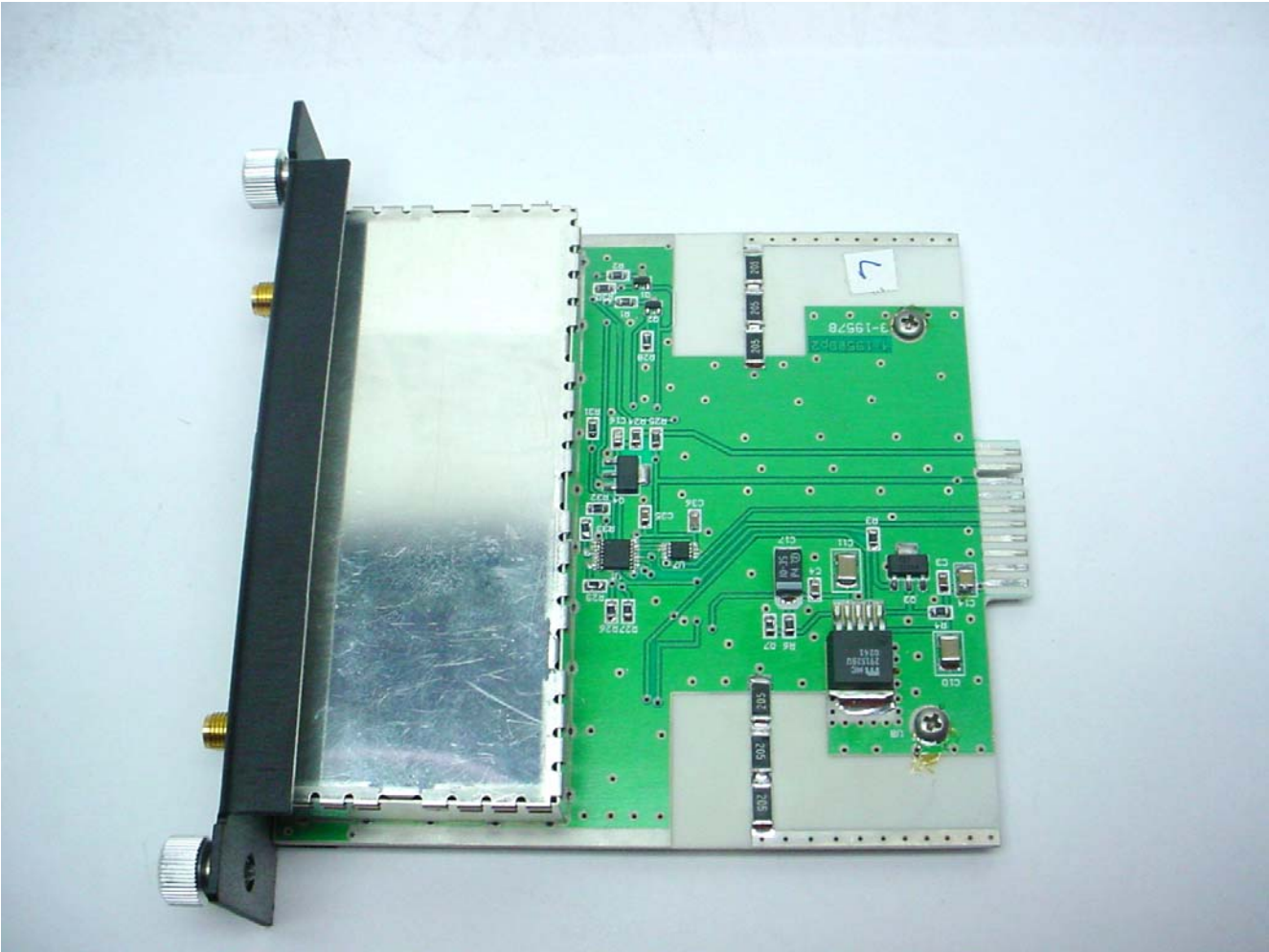


TX RX Systems, Inc.
Signal Booster 2, Model 61-89A-50-A18-G1
FCC ID: EZZ5PI031202
IC: 1940A-PI031202

ANNEX 3 – INTERNAL PHOTOGRAPHS



ANNEX 3 – INTERNAL PHOTOGRAPHS



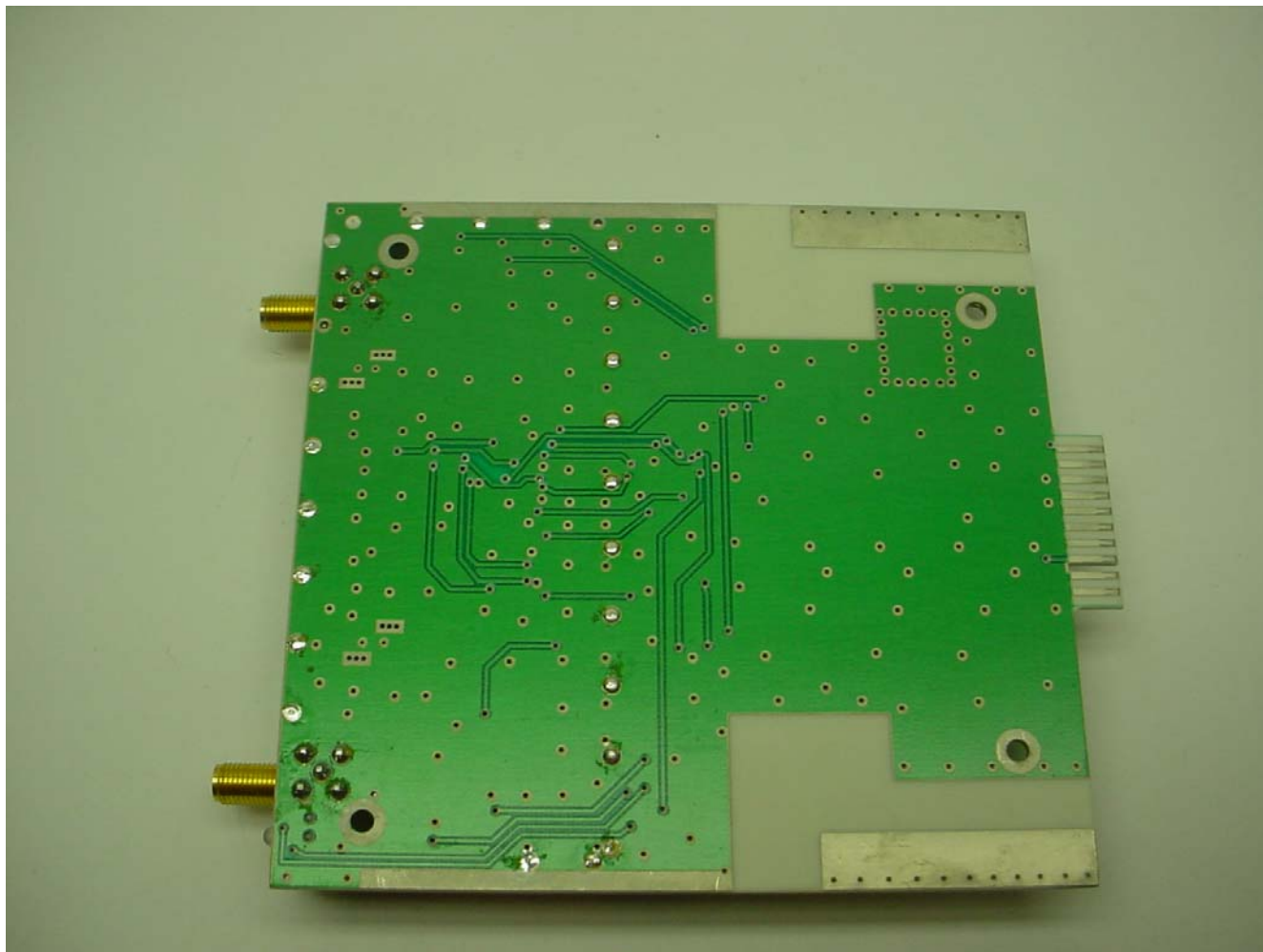
TX RX Systems, Inc.
Signal Booster 2, Model 61-89A-50-A18-G1
FCC ID: EZZ5PI031202
IC: 1940A-PI031202

ANNEX 3 – INTERNAL PHOTOGRAPHS



**TX RX Systems, Inc.
Signal Booster 2, Model 61-89A-50-A18-G1
FCC ID: EZZ5PI031202
IC: 1940A-PI031202**

ANNEX 3 – INTERNAL PHOTOGRAPHS



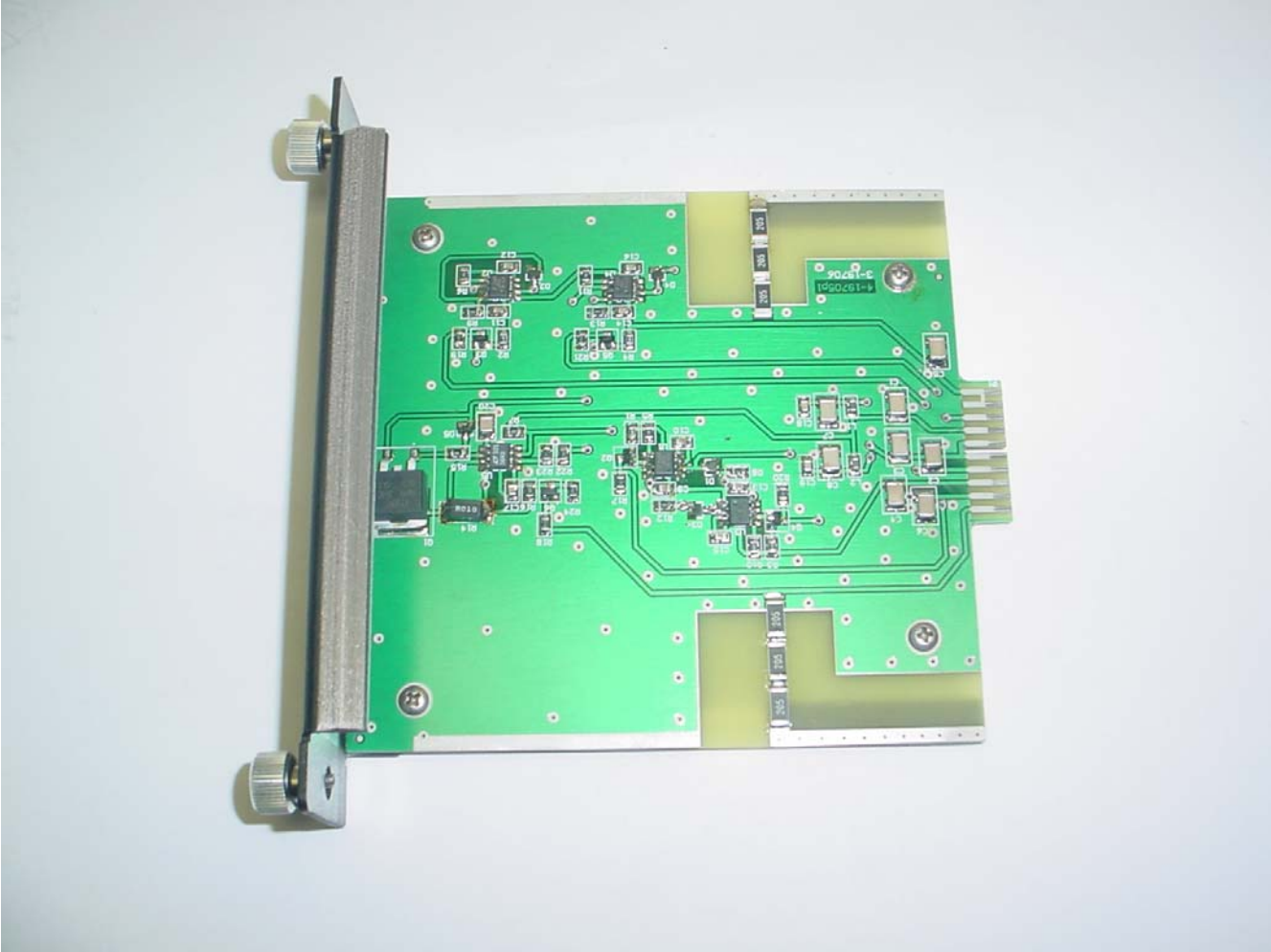
TX RX Systems, Inc.
Signal Booster 2, Model 61-89A-50-A18-G1
FCC ID: EZZ5PI031202
IC: 1940A-PI031202

ANNEX 3 – INTERNAL PHOTOGRAPHS



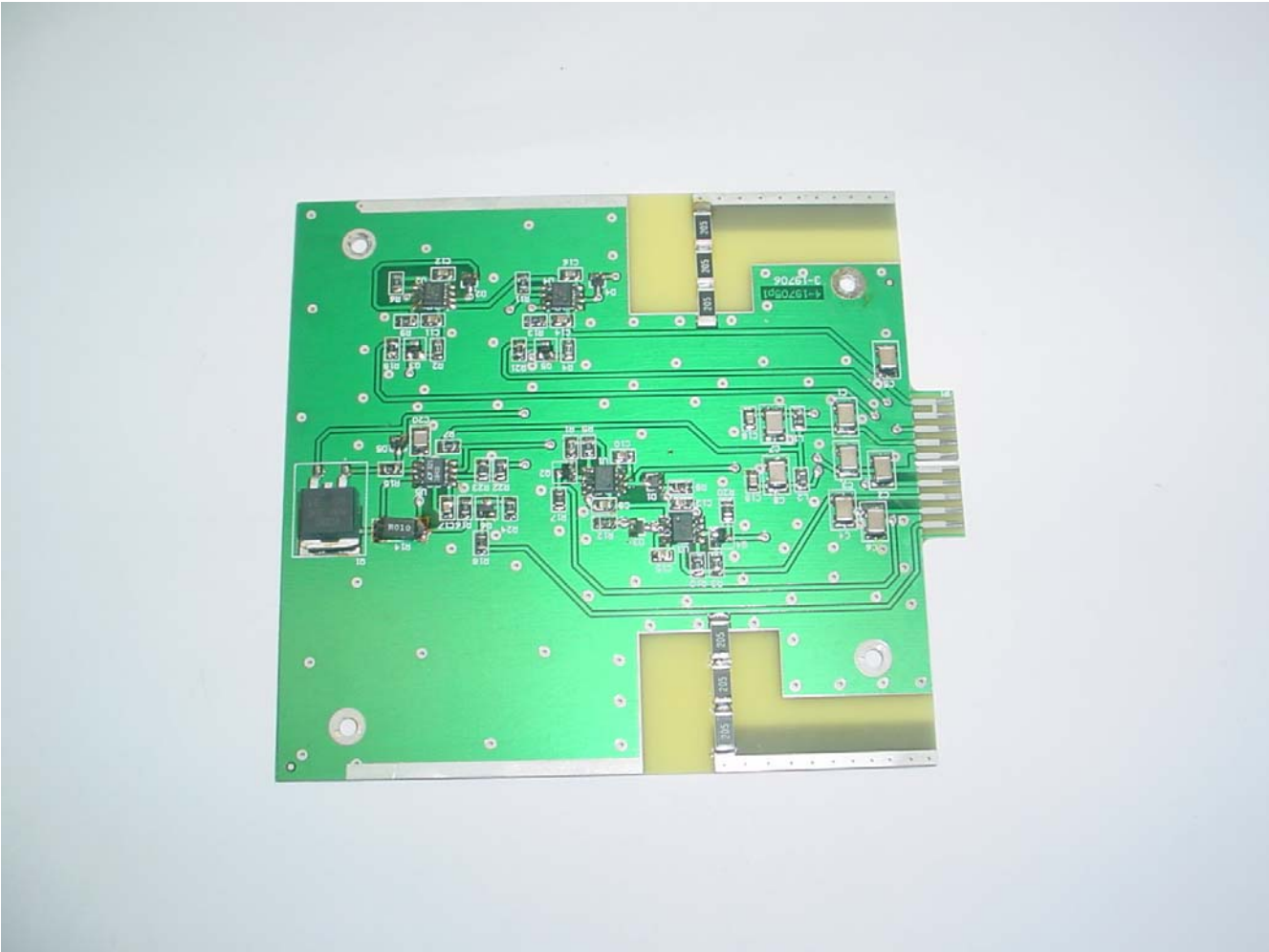
TX RX Systems, Inc.
Signal Booster 2, Model 61-89A-50-A18-G1
FCC ID: EZZ5PI031202
IC: 1940A-PI031202

ANNEX 3 – INTERNAL PHOTOGRAPHS



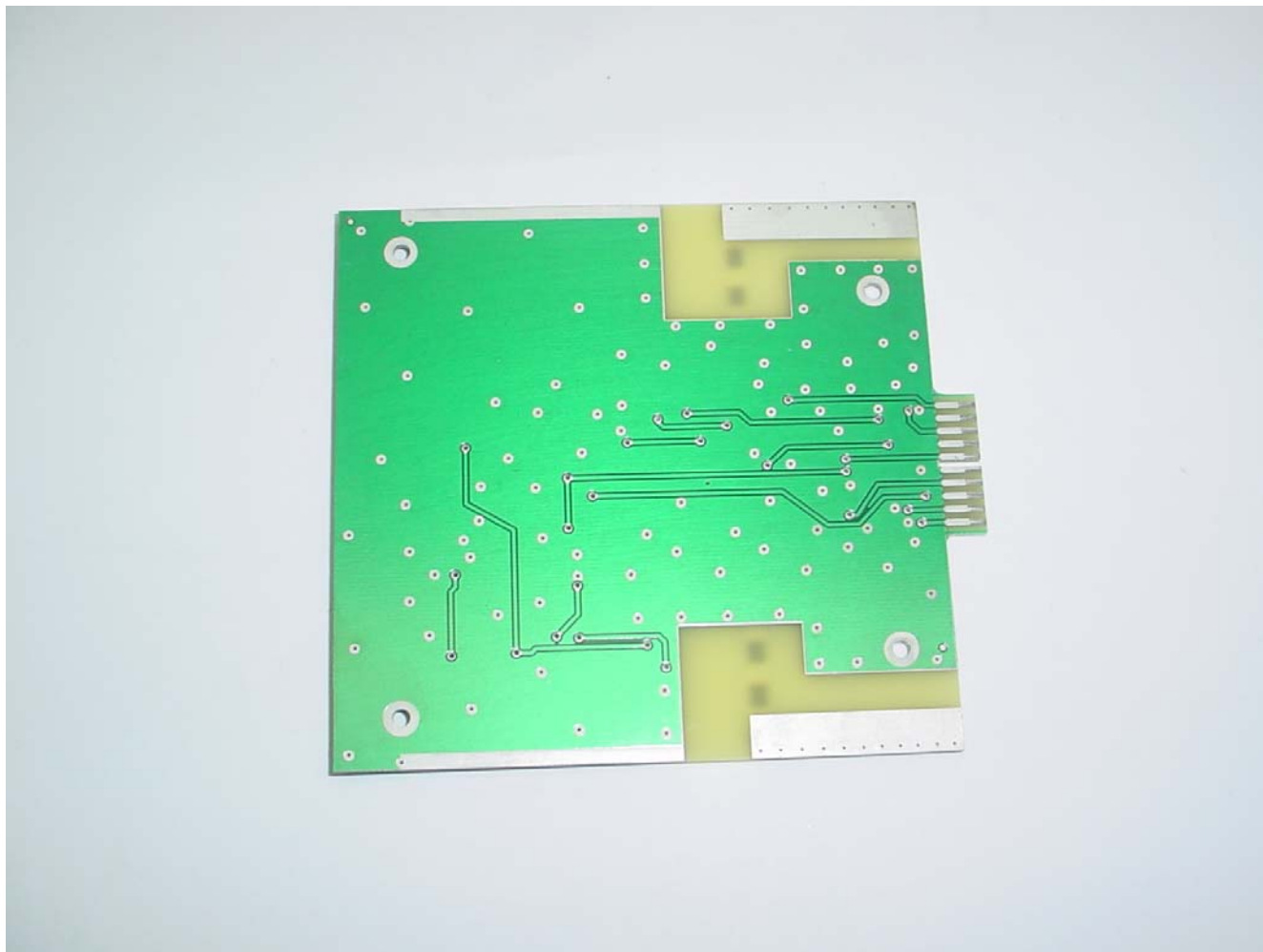
**TX RX Systems, Inc.
Signal Booster 2, Model 61-89A-50-A18-G1
FCC ID: EZZ5PI031202
IC: 1940A-PI031202**

ANNEX 3 – INTERNAL PHOTOGRAPHS



**TX RX Systems, Inc.
Signal Booster 2, Model 61-89A-50-A18-G1
FCC ID: EZZ5PI031202
IC: 1940A-PI031202**

ANNEX 3 – INTERNAL PHOTOGRAPHS



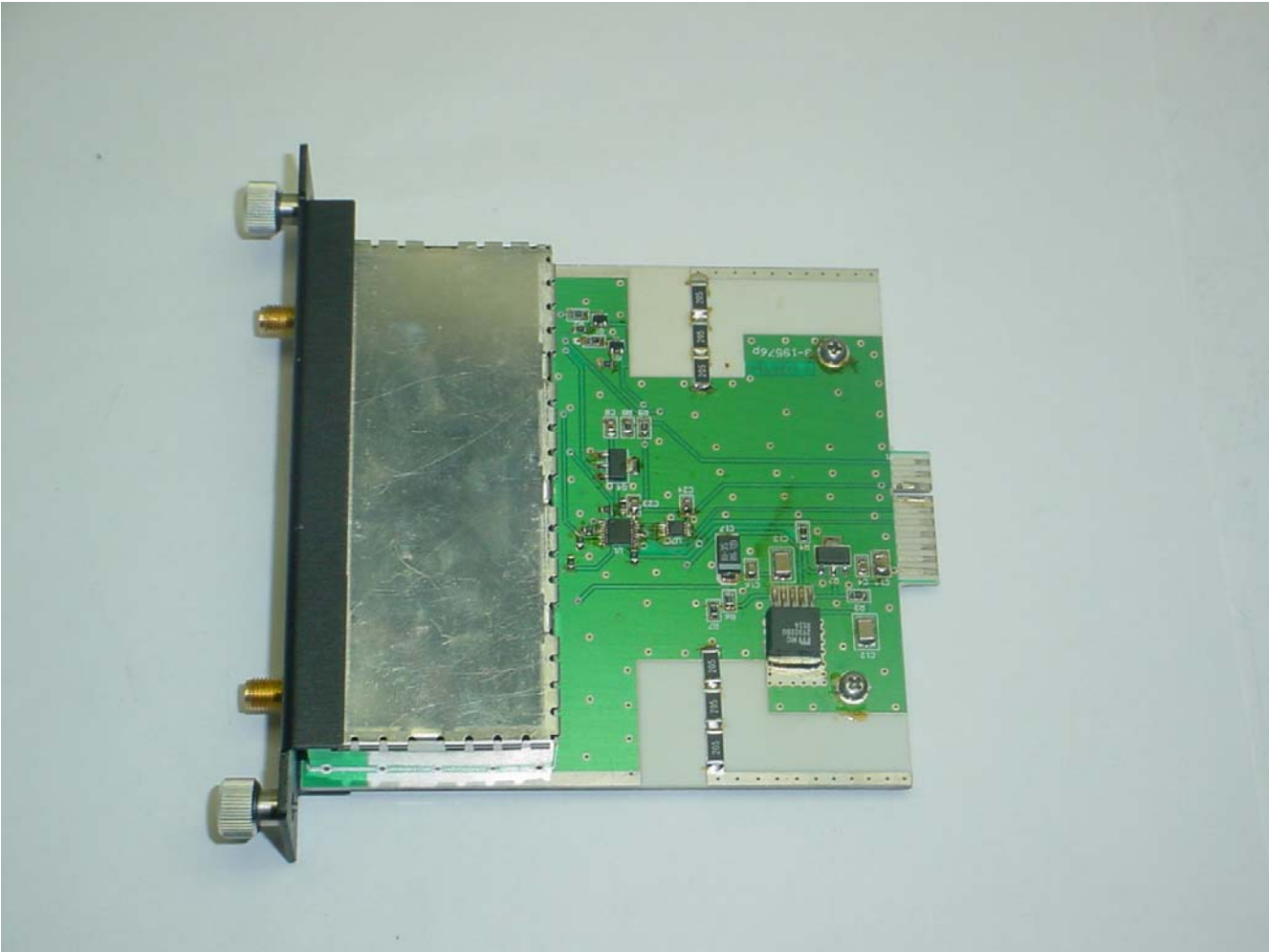
**TX RX Systems, Inc.
Signal Booster 2, Model 61-89A-50-A18-G1
FCC ID: EZZ5PI031202
IC: 1940A-PI031202**

ANNEX 3 – INTERNAL PHOTOGRAPHS



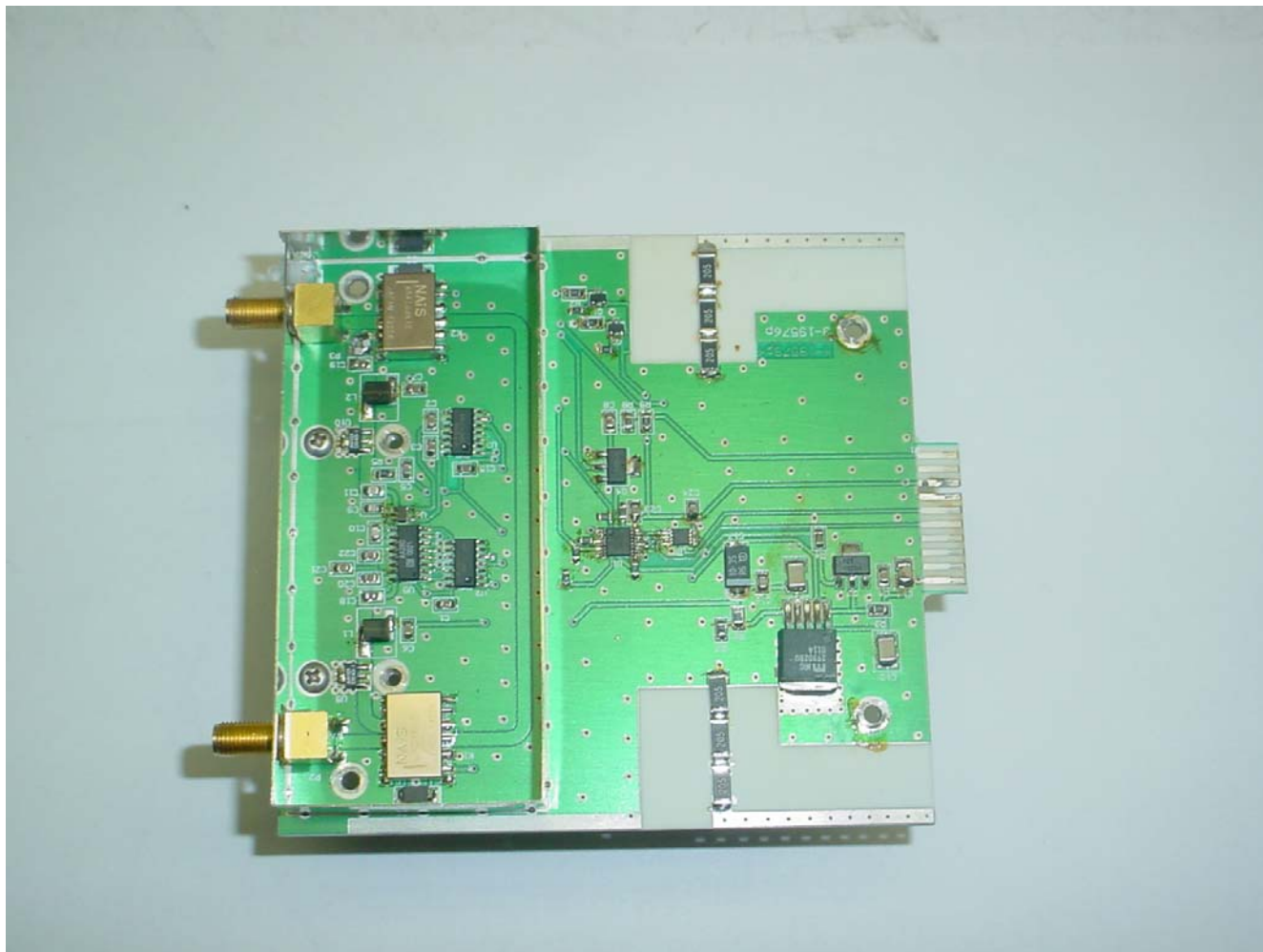
**TX RX Systems, Inc.
Signal Booster 2, Model 61-89A-50-A18-G1
FCC ID: EZZ5PI031202
IC: 1940A-PI031202**

ANNEX 3 – INTERNAL PHOTOGRAPHS



**TX RX Systems, Inc.
Signal Booster 2, Model 61-89A-50-A18-G1
FCC ID: EZZ5PI031202
IC: 1940A-PI031202**

ANNEX 3 – INTERNAL PHOTOGRAPHS



TX RX Systems, Inc.
Signal Booster 2, Model 61-89A-50-A18-G1
FCC ID: EZZ5PI031202
IC: 1940A-PI031202

ANNEX 3 – INTERNAL PHOTOGRAPHS



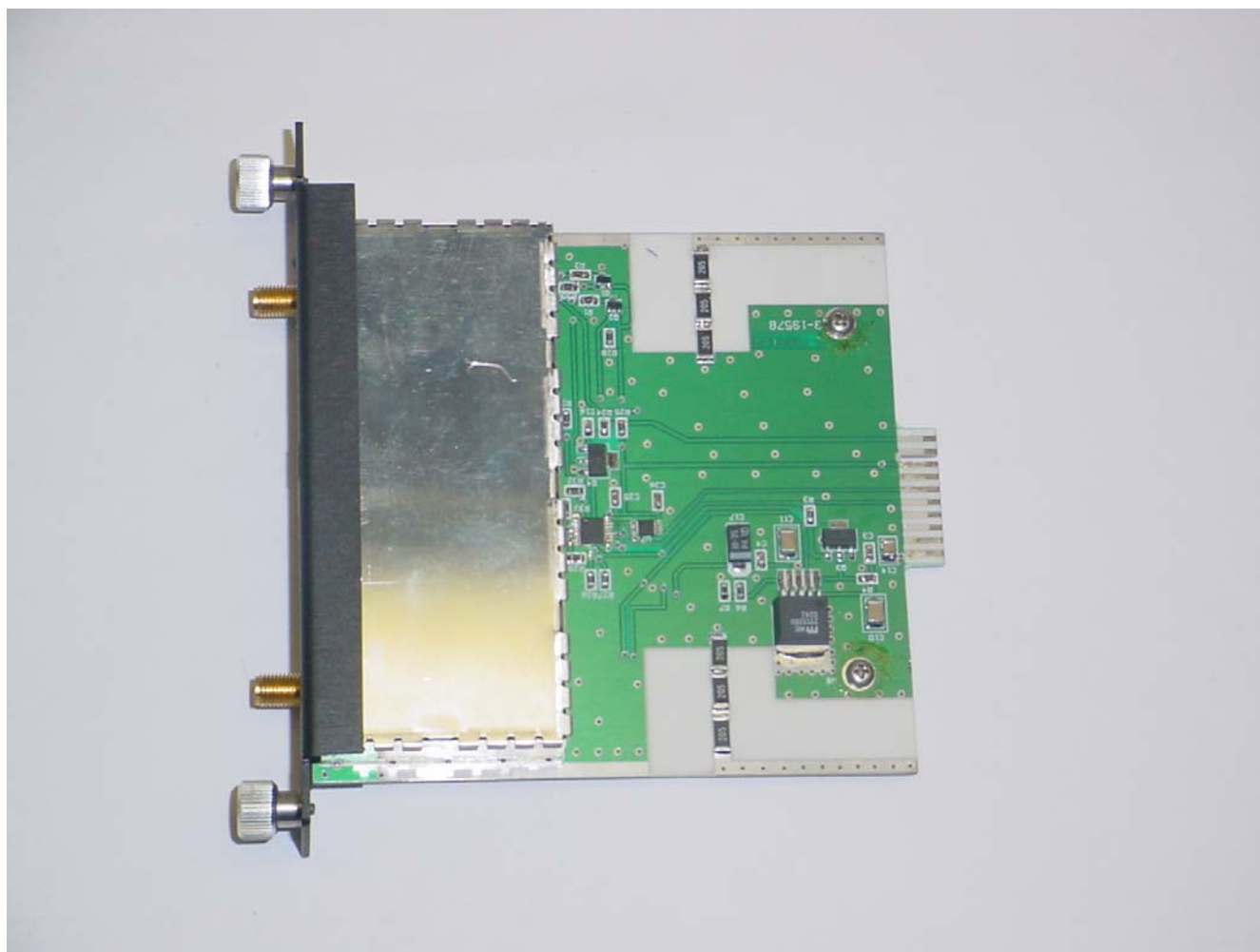
TX RX Systems, Inc.
Signal Booster 2, Model 61-89A-50-A18-G1
FCC ID: EZZ5PI031202
IC: 1940A-PI031202

ANNEX 3 – INTERNAL PHOTOGRAPHS



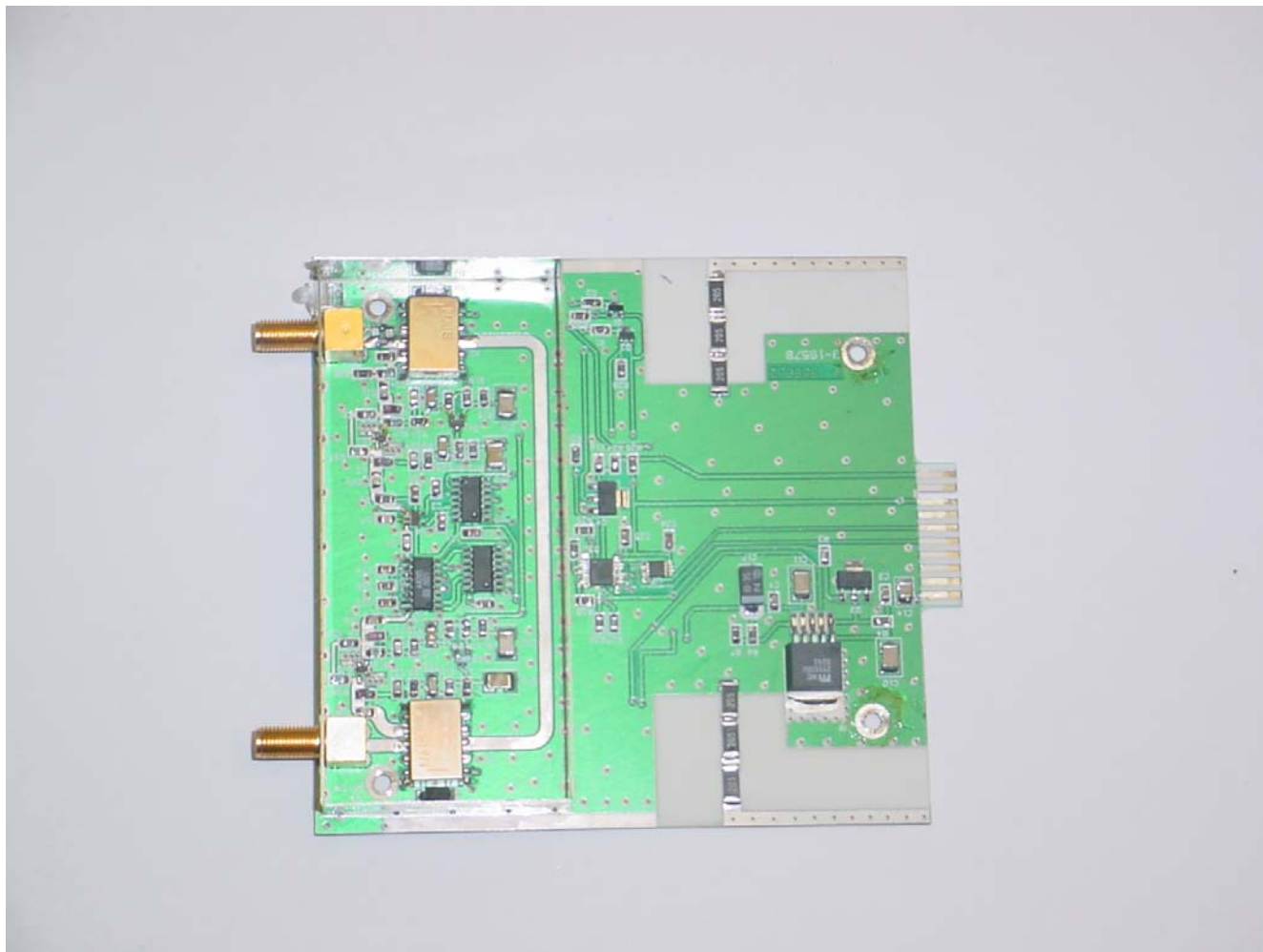
TX RX Systems, Inc.
Signal Booster 2, Model 61-89A-50-A18-G1
FCC ID: EZZ5PI031202
IC: 1940A-PI031202

ANNEX 3 – INTERNAL PHOTOGRAPHS



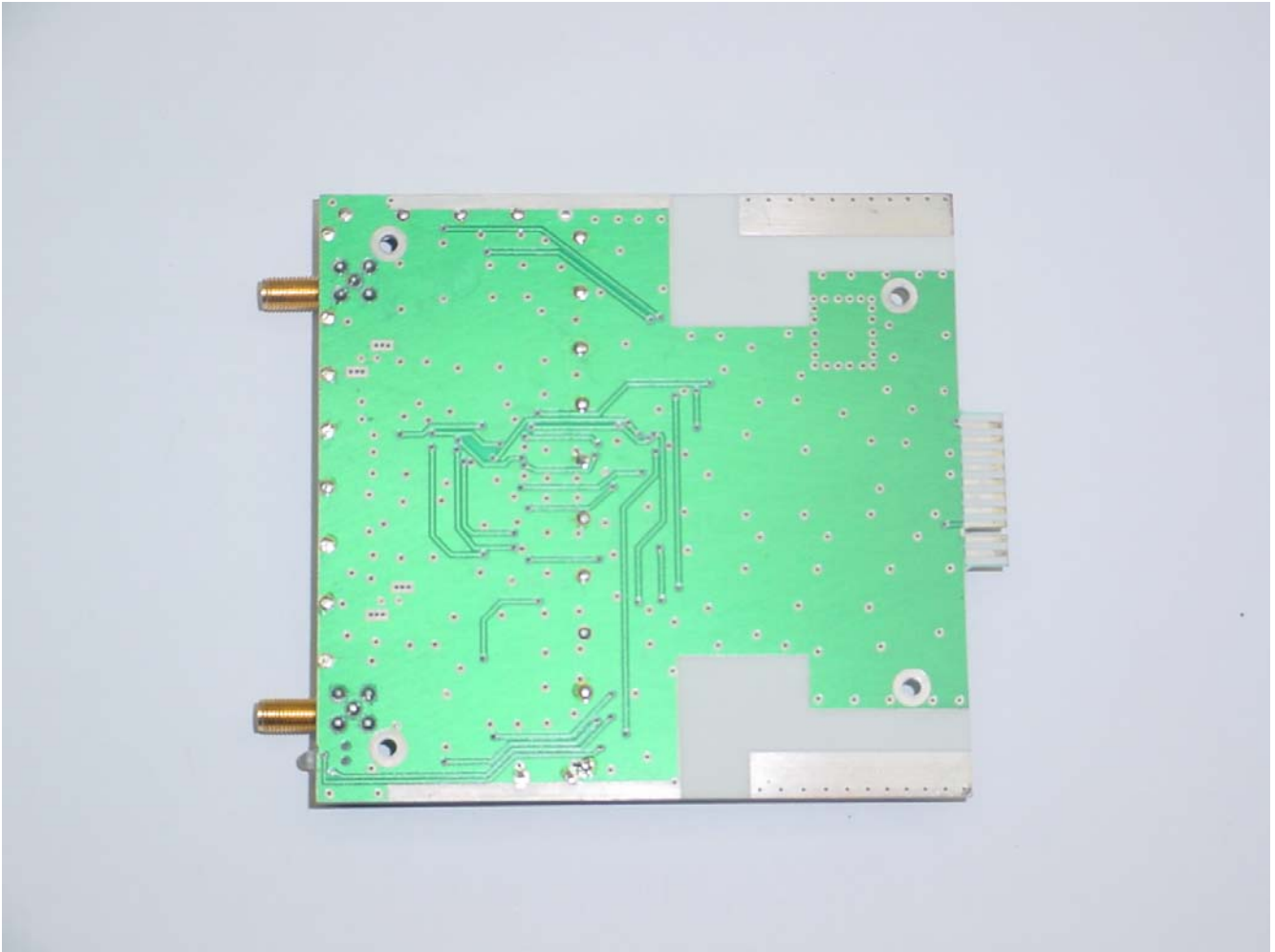
TX RX Systems, Inc.
Signal Booster 2, Model 61-89A-50-A18-G1
FCC ID: EZZ5PI031202
IC: 1940A-PI031202

ANNEX 3 – INTERNAL PHOTOGRAPHS



TX RX Systems, Inc.
Signal Booster 2, Model 61-89A-50-A18-G1
FCC ID: EZZ5PI031202
IC: 1940A-PI031202

ANNEX 3 – INTERNAL PHOTOGRAPHS



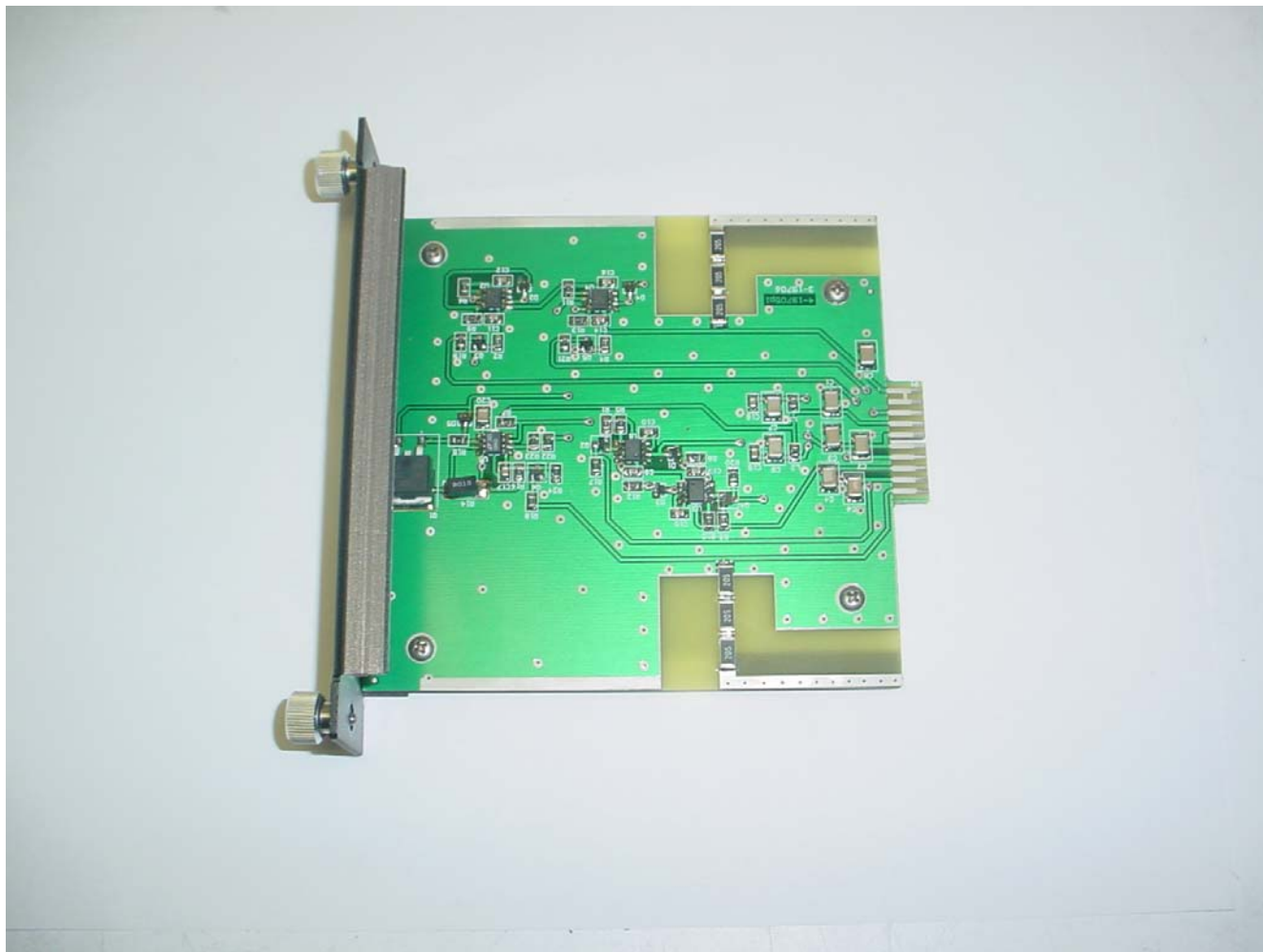
TX RX Systems, Inc.
Signal Booster 2, Model 61-89A-50-A18-G1
FCC ID: EZZ5PI031202
IC: 1940A-PI031202

ANNEX 3 – INTERNAL PHOTOGRAPHS



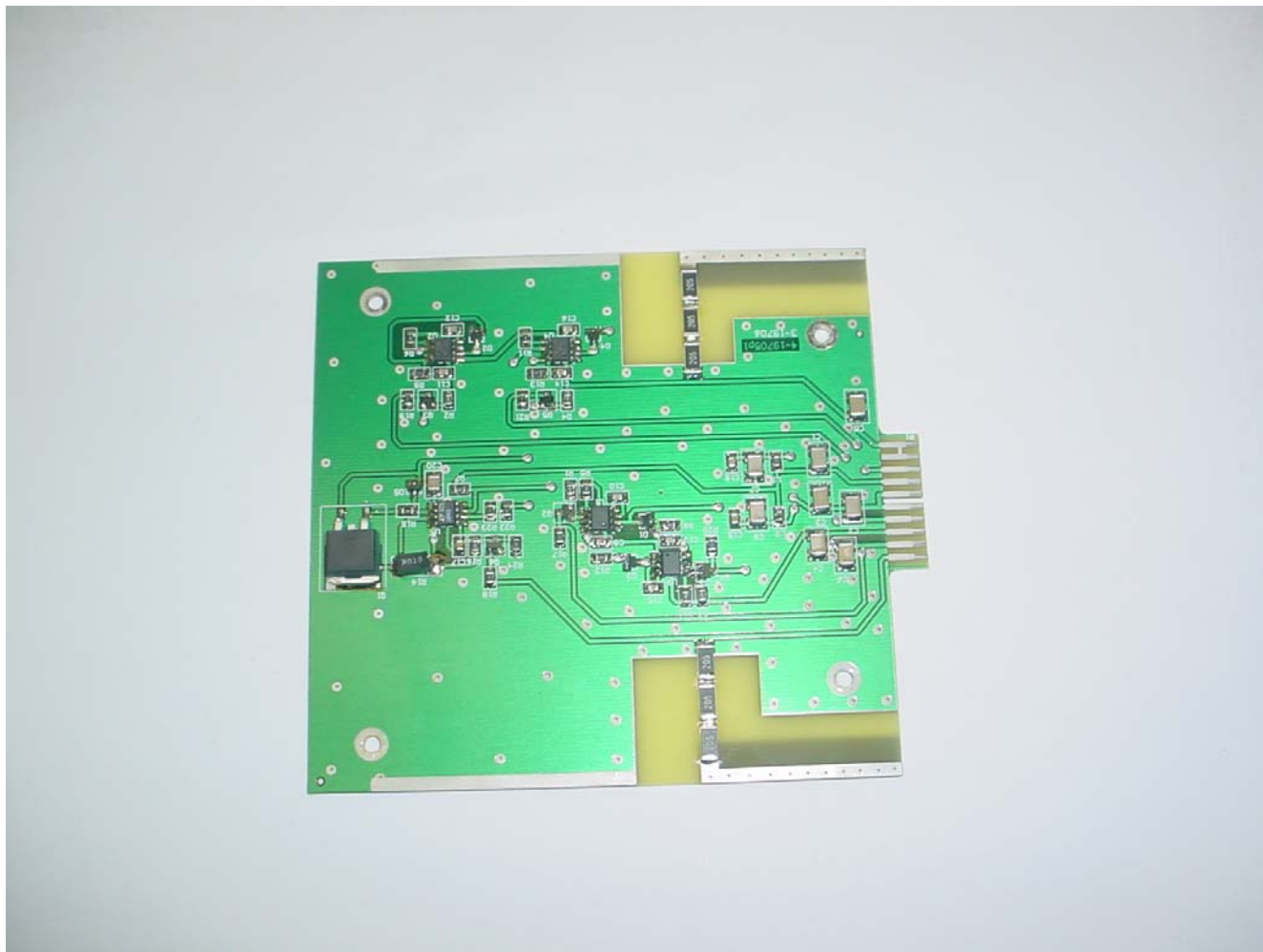
TX RX Systems, Inc.
Signal Booster 2, Model 61-89A-50-A18-G1
FCC ID: EZZ5PI031202
IC: 1940A-PI031202

ANNEX 3 – INTERNAL PHOTOGRAPHS



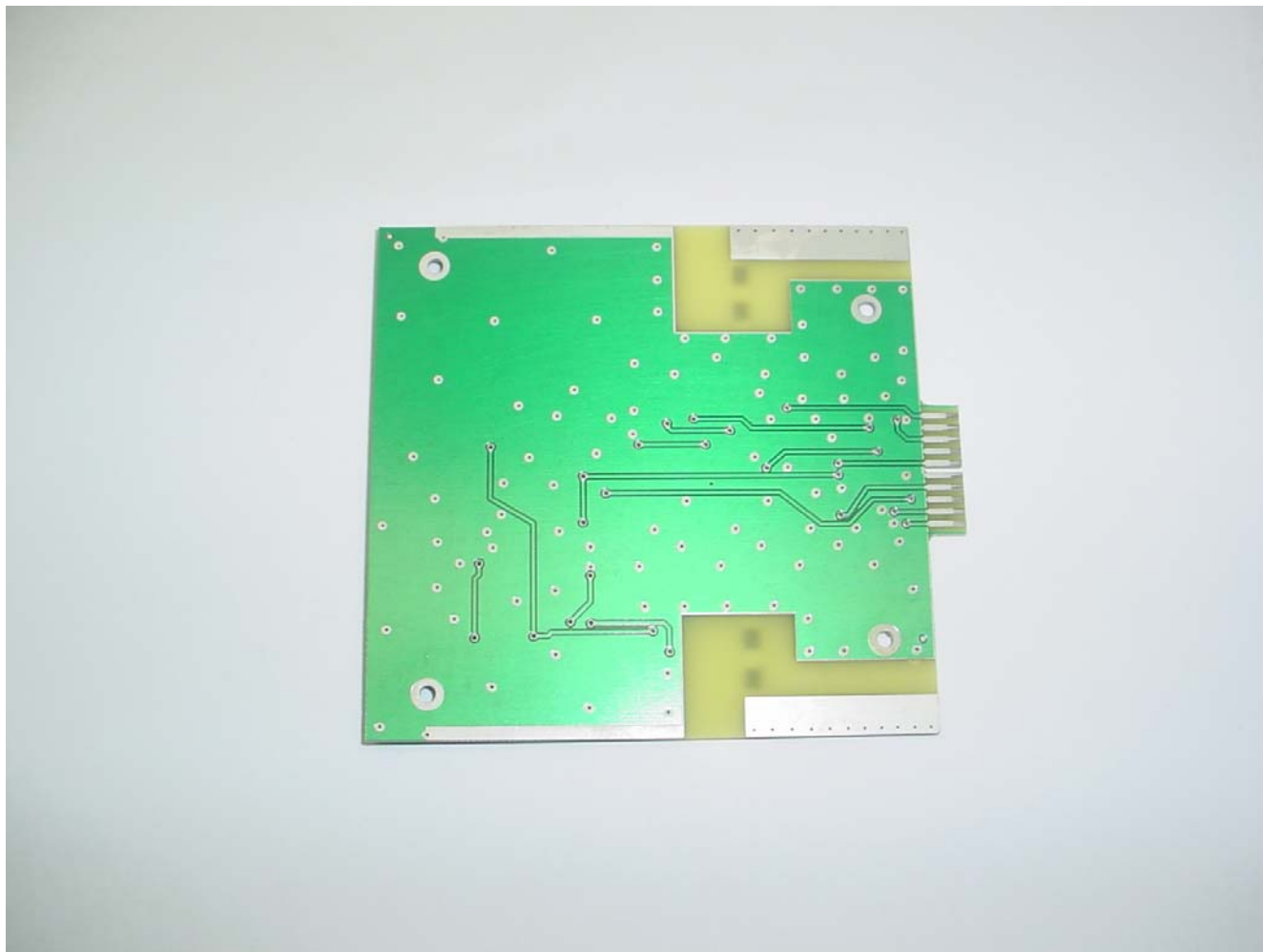
TX RX Systems, Inc.
Signal Booster 2, Model 61-89A-50-A18-G1
FCC ID: EZZ5PI031202
IC: 1940A-PI031202

ANNEX 3 – INTERNAL PHOTOGRAPHS



TX RX Systems, Inc.
Signal Booster 2, Model 61-89A-50-A18-G1
FCC ID: EZZ5PI031202
IC: 1940A-PI031202

ANNEX 3 – INTERNAL PHOTOGRAPHS



ANNEX 3 – INTERNAL PHOTOGRAPHS



**TX RX Systems, Inc.
Signal Booster 2, Model 61-89A-50-A18-G1
FCC ID: EZZ5PI031202
IC: 1940A-PI031202**

ANNEX 3 – INTERNAL PHOTOGRAPHS



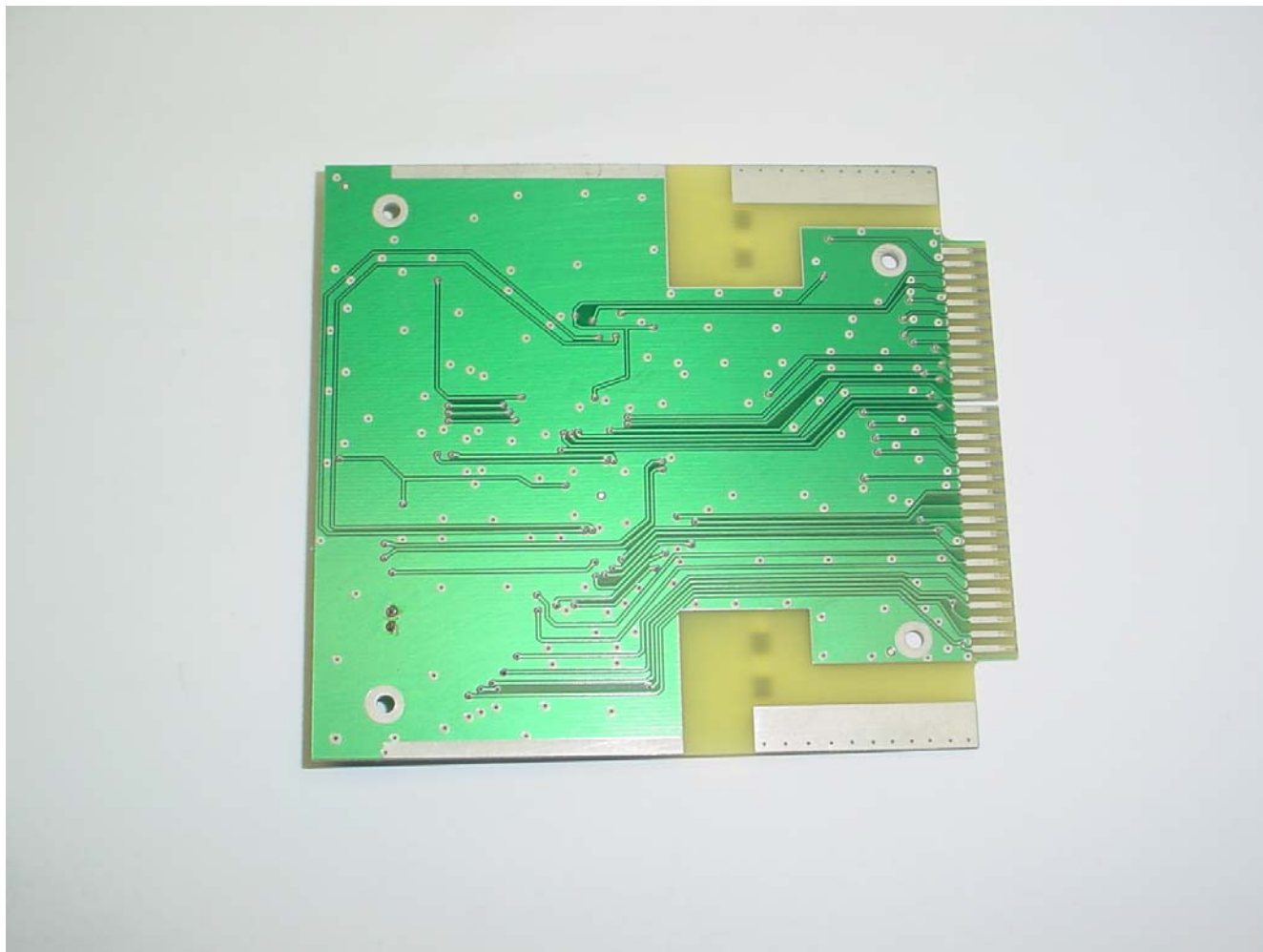
**TX RX Systems, Inc.
Signal Booster 2, Model 61-89A-50-A18-G1
FCC ID: EZZ5PI031202
IC: 1940A-PI031202**

ANNEX 3 – INTERNAL PHOTOGRAPHS



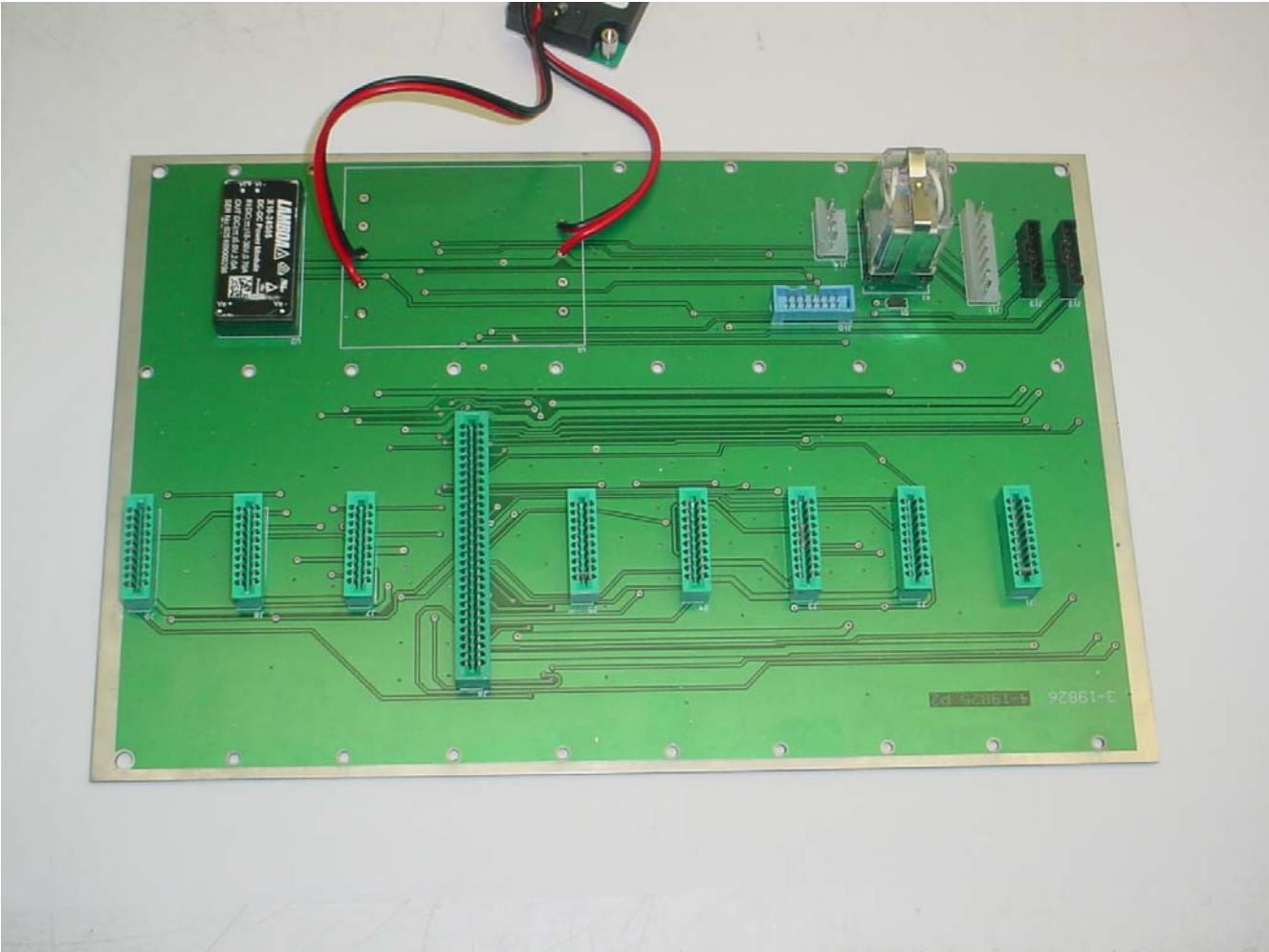
TX RX Systems, Inc.
Signal Booster 2, Model 61-89A-50-A18-G1
FCC ID: EZZ5PI031202
IC: 1940A-PI031202

ANNEX 3 – INTERNAL PHOTOGRAPHS



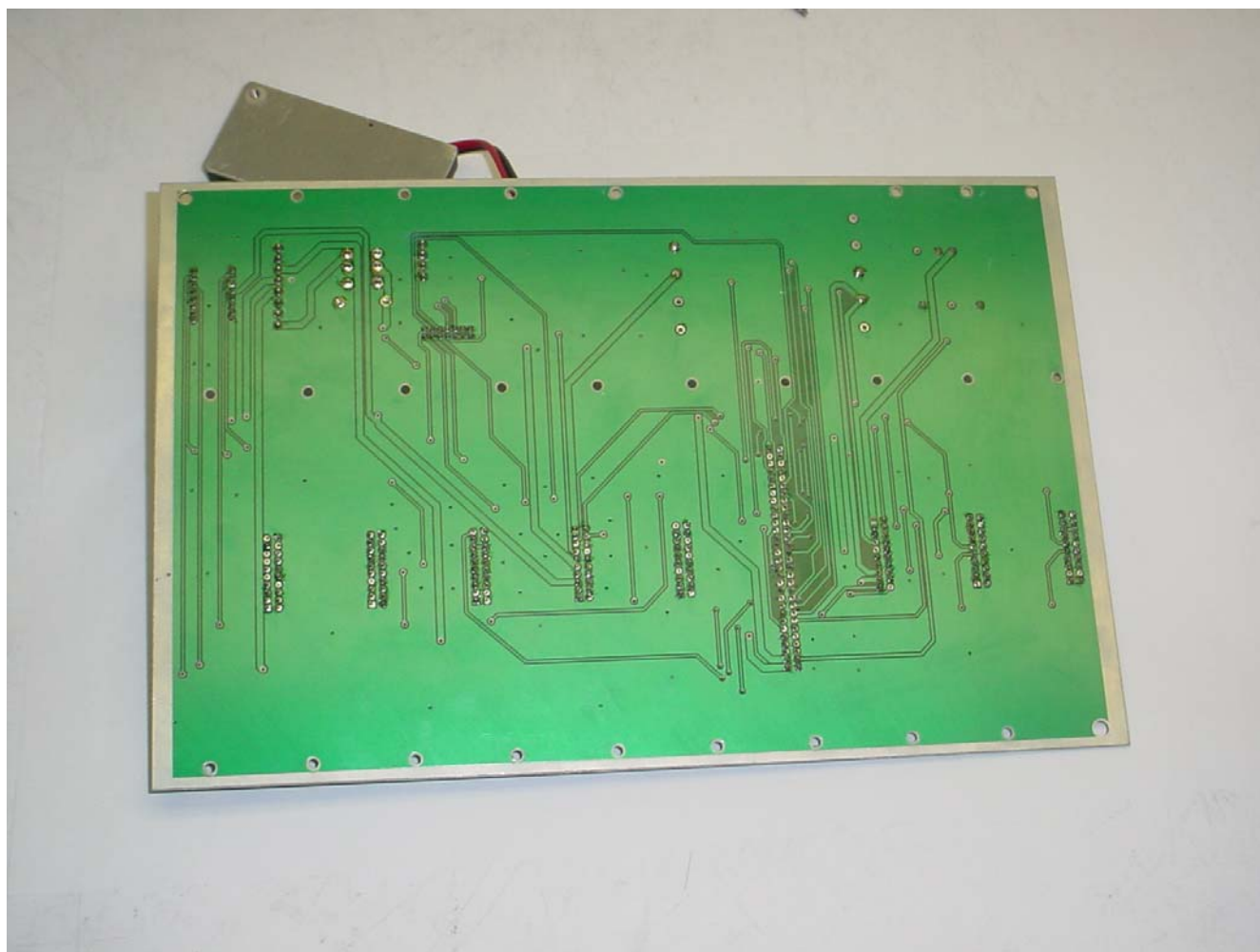
TX RX Systems, Inc.
Signal Booster 2, Model 61-89A-50-A18-G1
FCC ID: EZZ5PI031202
IC: 1940A-PI031202

ANNEX 3 – INTERNAL PHOTOGRAPHS



TX RX Systems, Inc.
Signal Booster 2, Model 61-89A-50-A18-G1
FCC ID: EZZ5PI031202
IC: 1940A-PI031202

ANNEX 3 – INTERNAL PHOTOGRAPHS



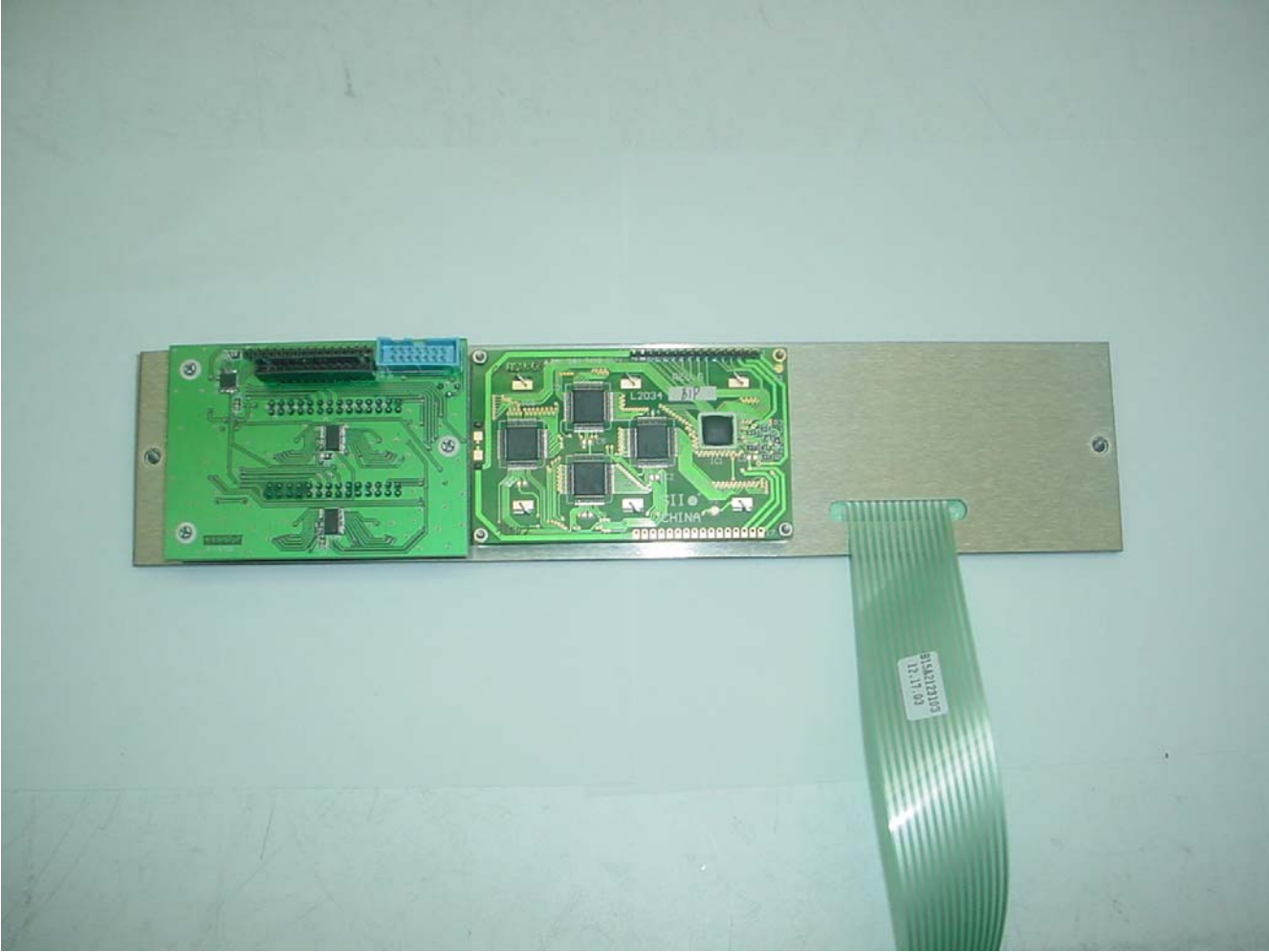
TX RX Systems, Inc.
Signal Booster 2, Model 61-89A-50-A18-G1
FCC ID: EZZ5PI031202
IC: 1940A-PI031202

ANNEX 3 – INTERNAL PHOTOGRAPHS



TX RX Systems, Inc.
Signal Booster 2, Model 61-89A-50-A18-G1
FCC ID: EZZ5PI031202
IC: 1940A-PI031202

ANNEX 3 – INTERNAL PHOTOGRAPHS



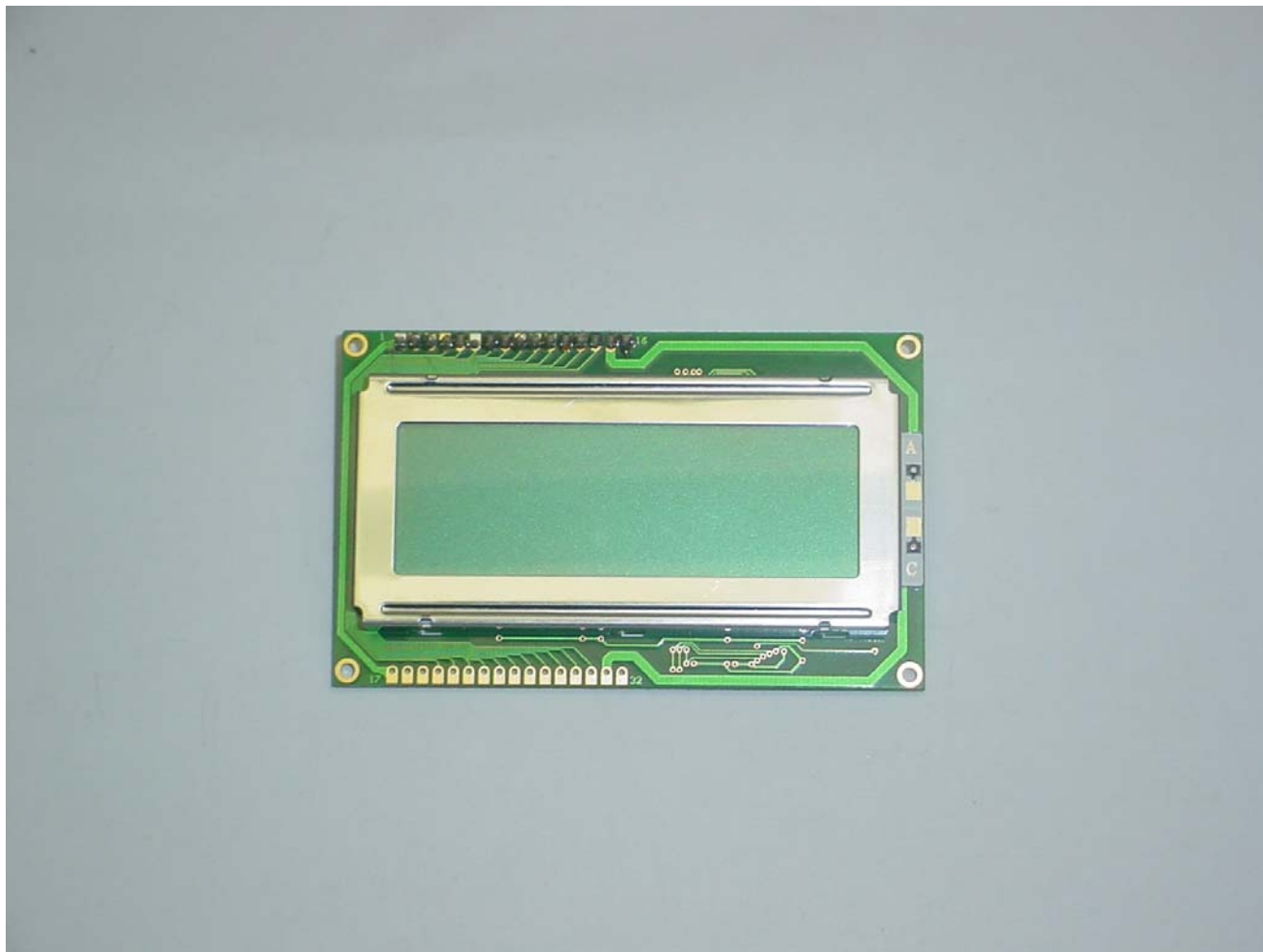
TX RX Systems, Inc.
Signal Booster 2, Model 61-89A-50-A18-G1
FCC ID: EZZ5PI031202
IC: 1940A-PI031202

ANNEX 3 – INTERNAL PHOTOGRAPHS



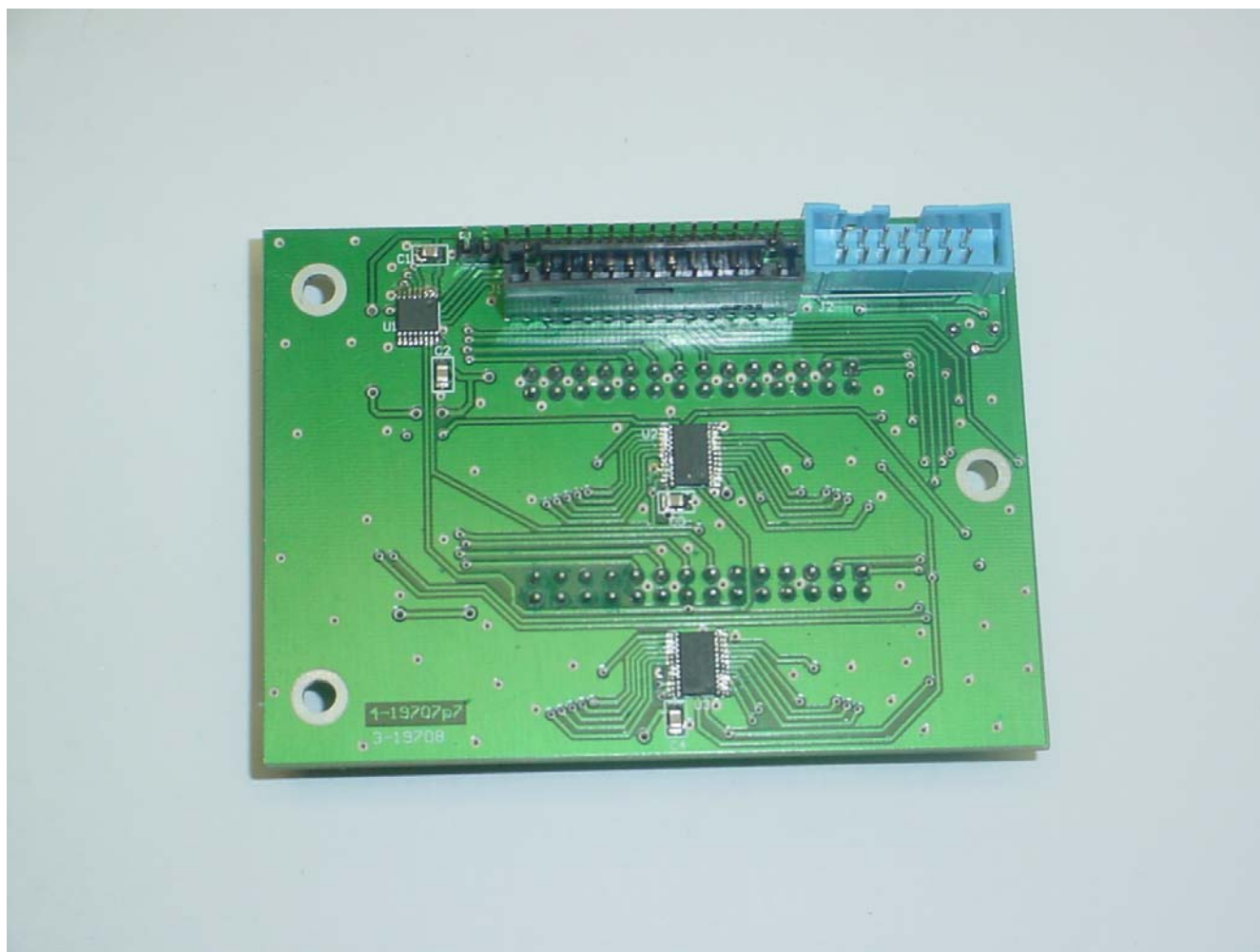
TX RX Systems, Inc.
Signal Booster 2, Model 61-89A-50-A18-G1
FCC ID: EZZ5PI031202
IC: 1940A-PI031202

ANNEX 3 – INTERNAL PHOTOGRAPHS



TX RX Systems, Inc.
Signal Booster 2, Model 61-89A-50-A18-G1
FCC ID: EZZ5PI031202
IC: 1940A-PI031202

ANNEX 3 – INTERNAL PHOTOGRAPHS



TX RX Systems, Inc.
Signal Booster 2, Model 61-89A-50-A18-G1
FCC ID: EZZ5PI031202
IC: 1940A-PI031202

ANNEX 3 – INTERNAL PHOTOGRAPHS



TX RX Systems, Inc.
Signal Booster 2, Model 61-89A-50-A18-G1
FCC ID: EZZ5PI031202
IC: 1940A-PI031202