



Directed Electronics
One Viper Way
Vista, CA 92081

DEIBLE1 vs DS4/DS4+

Project 7944 – DS4/DS4+ BLE Card D2D

Responsible: Di-Luan Le

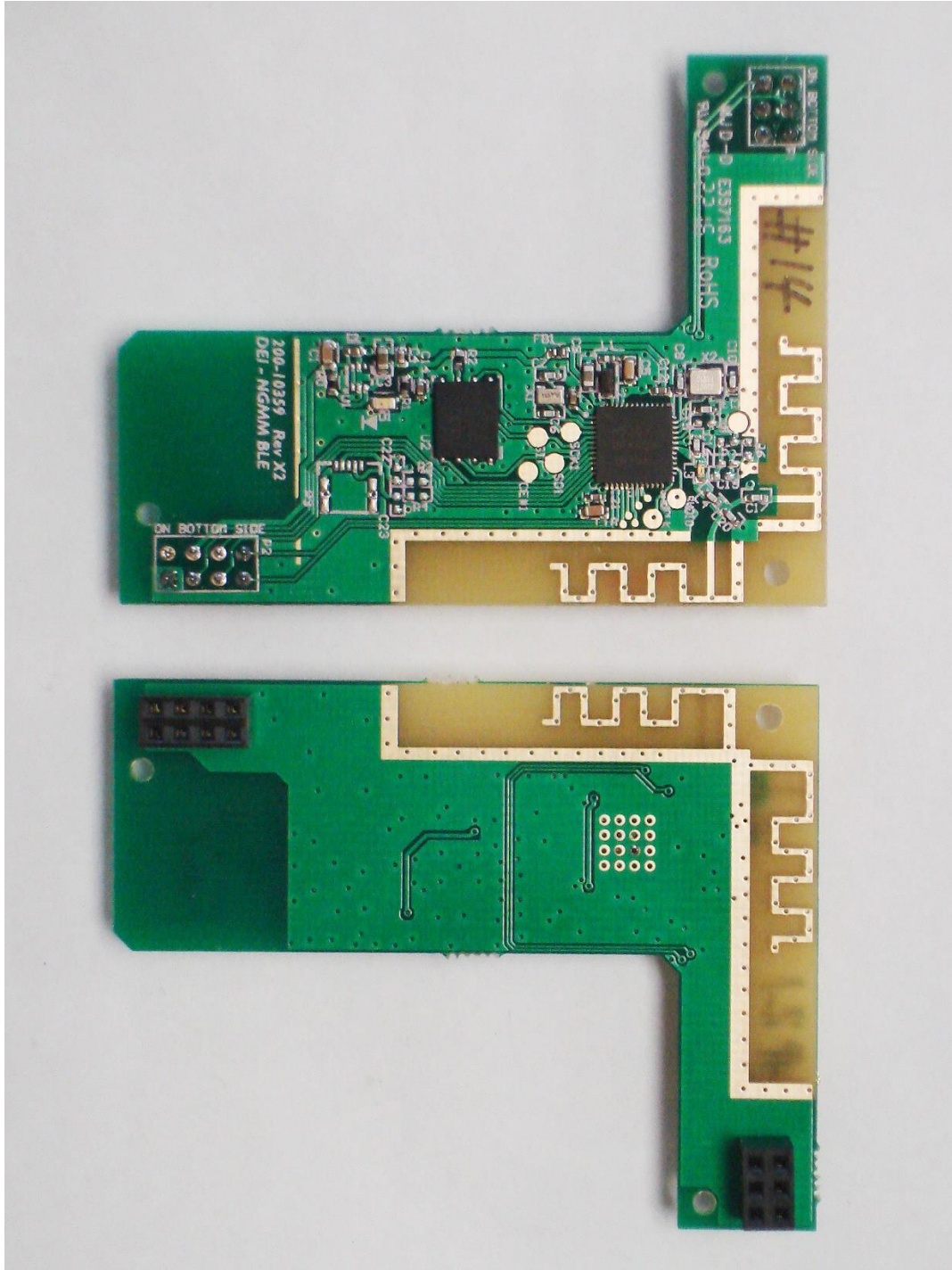
Page 1 of 3

DEI BLE Card inside the DS4/DS4+ Enclosure

Date: 09/07/2016
Document Release: version: 1.0
Part number: N/A

All data and information contained in or disclosed by this document is proprietary, confidential and privileged information of Directed Electronics, Inc., and all rights therein are expressly reserved. By accepting this material, the recipient agrees that this material and the information contained therein is held in confidence and in trust and will not be used, copied, reproduced in whole or in part, nor its contents revealed in any manner to others without the express written permission of Directed Electronics, Inc.

DEI BLE1 Card Top and Bottom views



This is the photo of prototype Rev X2, submitted for the FCC Certifications test. The Rev 3.0 is identical in every aspect, with the printed information FCC ID: EZSDEIBLE1 and IC:1513A-DEIBLE1.

DEIBLE1 Card installed inside the host module DS4+



End of document.