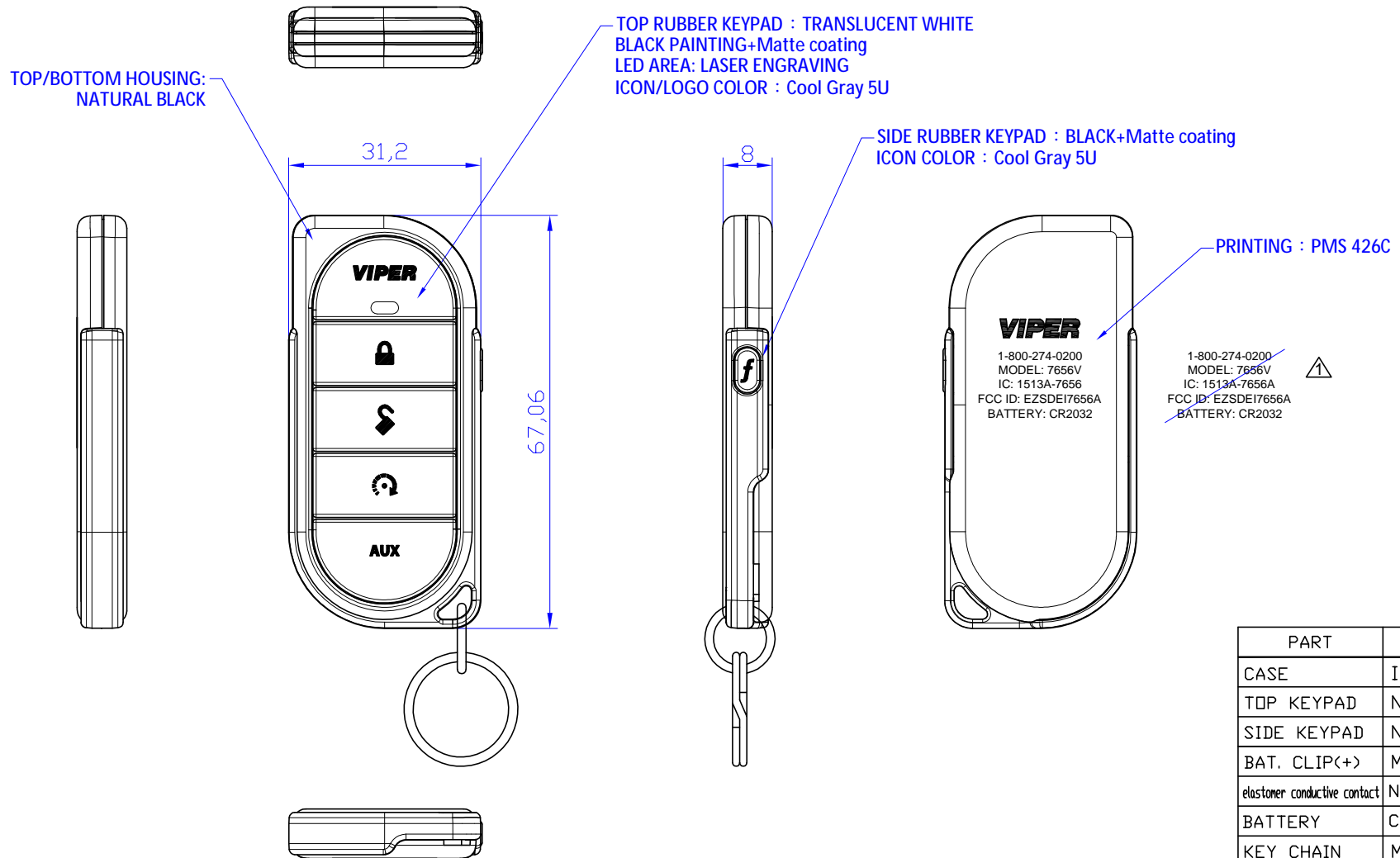


| REVISIONS | | | | |
|-----------|-----------|---------------------|------|----------|
| REV. | ACC. | DESCRIPTION | DRN. | DATE |
| 1 | 1/29 mail | modify screen print | Eric | 1/29-'14 |



| PART | P/N |
|------------------------------|----------|
| CASE | IAWM3002 |
| TOP KEYPAD | NKDM9BB0 |
| SIDE KEYPAD | NKWM00A0 |
| BAT. CLIP(+) | MCDM9G00 |
| elastomer conductive contact | NADG21AA |
| BATTERY | CR2032 |
| KEY CHAIN | MA16D000 |

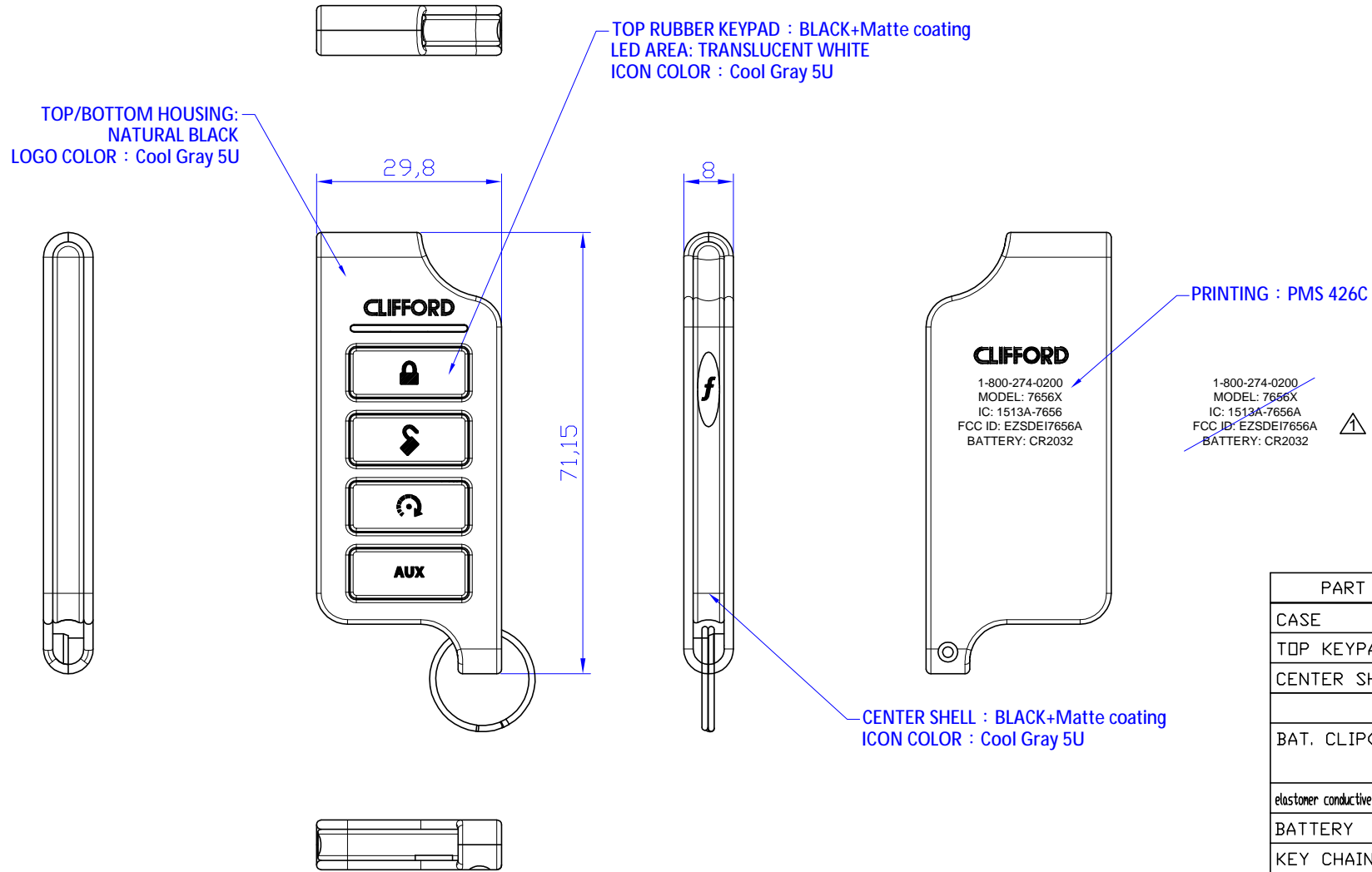
BODY MATERIAL : PC/ABS
 1. Texture is same as MT-11010
 2. Radius will be 0.2 if not specified.

*Tolerance please refer specification of tolerance limits "c"
 INJECT TOLERANCE SPEC.

| DIMENSION | GRADE | A | B | C |
|-----------|-------|--------|--------|--------|
| UNDER 6 | | ± 0.08 | ± 0.16 | ± 0.30 |
| 6-30 | | ± 0.10 | ± 0.20 | ± 0.40 |
| 30-120 | | ± 0.20 | ± 0.40 | ± 0.80 |
| 120-300 | | ± 0.40 | ± 0.80 | ± 2.00 |

| | | | | | | |
|------------|----------------|--------------|---------------|--------------------------|-------|--|
| SCALE: 1:1 | UNIT: M/M | DRN BY Eric | DATE 12/6-'13 | NUTEK CORPORATION | | |
| MATERIAL | CHK BY YYS | TITLE | | DEI | | |
| FINISH | APPD BY VICTOR | 7656V LED TX | | | | |
| CODE | SHEET OF | SIZE A4 | DEPT | DRAWING NO 10110260-1 | REV 1 | |

| REVISIONS | | | | |
|-----------|-----------|---------------------|------|----------|
| REV. | ACC. | DESCRIPTION | DRN. | DATE |
| 1 | 1/29 mail | modify screen print | Eric | 1/29-'14 |



| PART | P/N |
|------------------------------|---------------------------|
| CASE | IAWM40A3 |
| TOP KEYPAD | NKWM4BB0 |
| CENTER SHELL | NAWM4BA0 |
| BAT. CLIP(+) | MCDM9G00 + IADA2000 |
| elastomer conductive contact | NADG21AA |
| BATTERY | CR2032 |
| KEY CHAIN | MA16B000 |
| SCREW | MIF17005 |

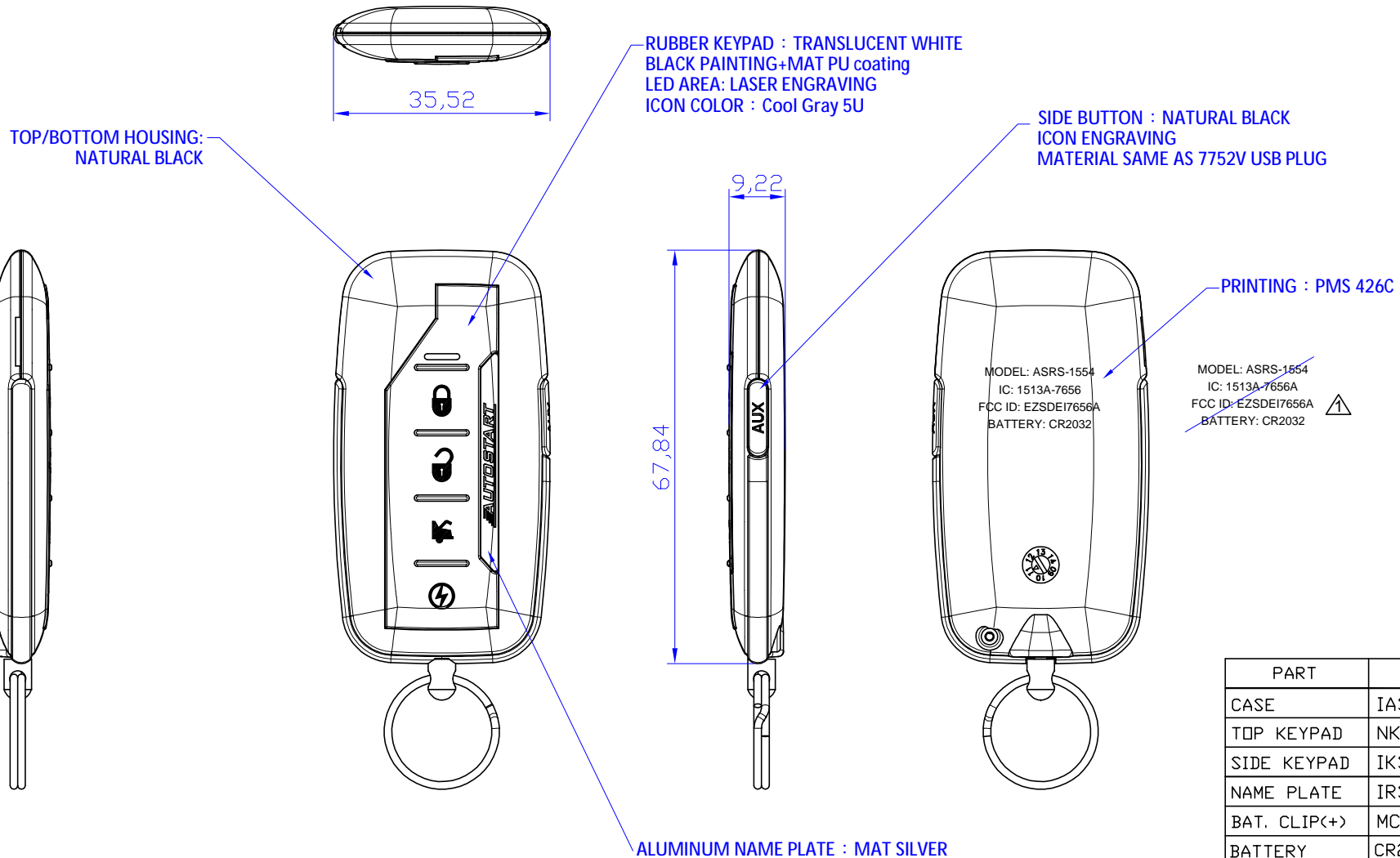
BODY MATERIAL : PC/ABS
1. Texture is same as MT-11010
2. Radius will be 0.2 if not specified.

*Tolerance please refer specification of tolerance limits 'c'
INJECT TOLERANCE SPEC.

| DIMENSION | GRADE | A | B | C |
|-----------|-------|--------|--------|--------|
| UNDER 6 | | ± 0.08 | ± 0.16 | ± 0.30 |
| 6-30 | | ± 0.10 | ± 0.20 | ± 0.40 |
| 30-120 | | ± 0.20 | ± 0.40 | ± 0.80 |
| 120-300 | | ± 0.40 | ± 0.80 | ± 2.00 |

| | | | | | | | |
|------------|-----------|-------------|----------------|---------------------------|-----------------------|-------|--|
| SCALE: 1:1 | UNIT: M/M | DRN BY Eric | DATE 12/6-'13 | NUTEK CORPORATION | | | |
| MATERIAL | FINISH | CHK BY YYS | APPD BY VICTOR | TITLE DEI 7656X LED TX | | | |
| CODE | SHEET | OF | SIZE A4 | DEPT | DRAWING NO 10110280-2 | REV 1 | |

| REVISIONS | | | | |
|-----------|-----------|---------------------|------|---------|
| REV. | ACC. | DESCRIPTION | DRN. | DATE |
| 1 | 1/29 mail | modify screen print | Eric | 1/29-14 |



| PART | P/N |
|--------------|----------|
| CASE | IASN3003 |
| TOP KEYPAD | NKSN2BB0 |
| SIDE KEYPAD | IKSN20A0 |
| NAME PLATE | IRSN2SA0 |
| BAT. CLIP(+) | MCDM9G00 |
| BATTERY | CR2032 |
| KEY CHAIN | MA160000 |
| SCREW | MIP01445 |

BODY MATERIAL : PC/ABS

1. Texture is same as MT-11010

2. Radius will be 0.2 if not specified.

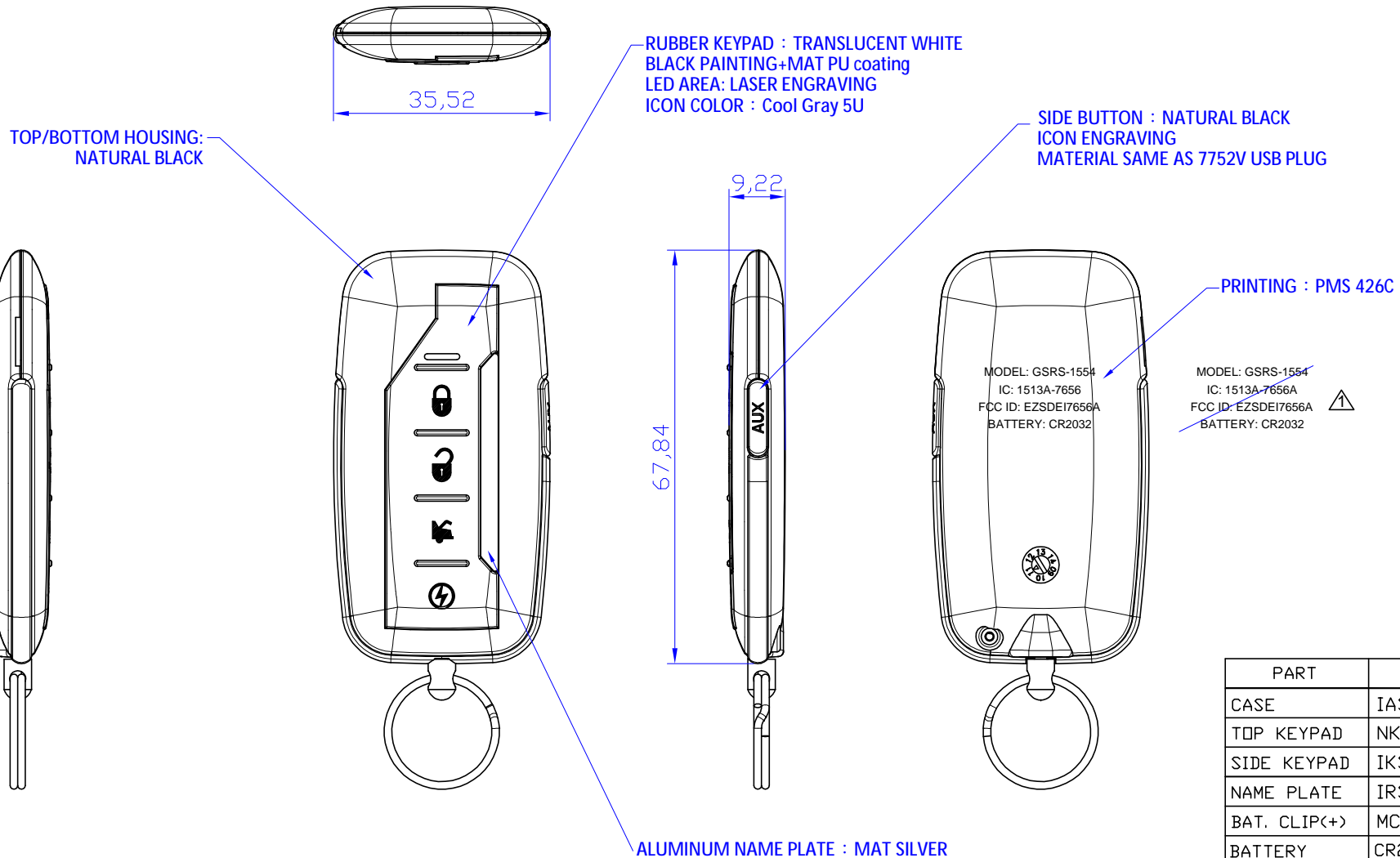
*Tolerance please refer specification of tolerance units "C"

INJECT TOLERANCE SPEC.

| GRADE | A | B | C |
|---------|--------|--------|--------|
| UNDER 6 | ± 0.08 | ± 0.16 | ± 0.30 |
| 6-30 | ± 0.10 | ± 0.20 | ± 0.40 |
| 30-120 | ± 0.20 | ± 0.40 | ± 0.80 |
| 120-300 | ± 0.40 | ± 0.80 | ± 2.00 |

| | | | | | | | |
|------------|-----------|-------------|----------------|--------------------------|-----------------------|-------|--|
| SCALE: 1:1 | UNIT: M/M | DRN BY Eric | DATE 12/6-13 | NUTEK CORPORATION | | | |
| MATERIAL | FINISH | CHK BY YYS | APPD BY VICTOR | TITLE AS ASRS-1554 TX | | | |
| CODE | SHEET | OF | SIZE A4 | DEPT | DRAWING NO 10210070-2 | REV 1 | |

| REVISIONS | | | | |
|-----------|-----------|---------------------|------|---------|
| REV. | ACC. | DESCRIPTION | DRN. | DATE |
| 1 | 1/29 mail | modify screen print | Eric | 1/29-14 |



| PART | P/N |
|--------------|----------|
| CASE | IASN3004 |
| TOP KEYPAD | NKSN2BB0 |
| SIDE KEYPAD | IKSN20A0 |
| NAME PLATE | IRSN2S00 |
| BAT. CLIP(+) | MCDM9G00 |
| BATTERY | CR2032 |
| KEY CHAIN | MA160000 |
| SCREW | MIP01445 |

BODY MATERIAL : PC/ABS

1. Texture is same as MT-11010

2. Radius will be 0.2 if not specified.

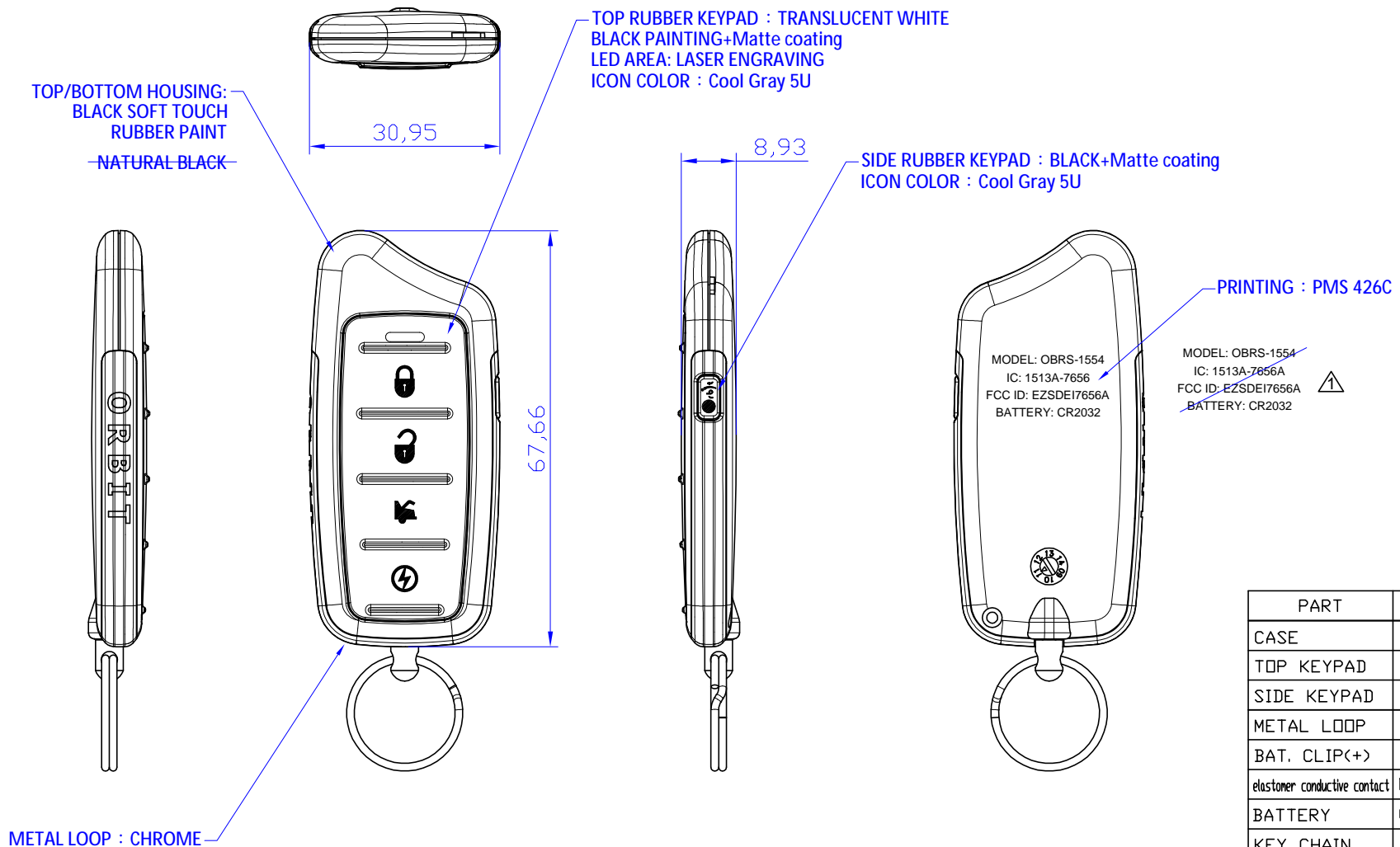
*Tolerance please refer specification of tolerance units "c"

INJECT TOLERANCE SPEC.

| GRADE | A | B | C |
|---------|--------|--------|--------|
| UNDER 6 | ± 0.08 | ± 0.16 | ± 0.30 |
| 6-30 | ± 0.10 | ± 0.20 | ± 0.40 |
| 30-120 | ± 0.20 | ± 0.40 | ± 0.80 |
| 120-300 | ± 0.40 | ± 0.80 | ± 2.00 |

| | | | | | | | |
|------------|-----------------|--------------|---------------|--------------------------|--------|--|--|
| SCALE: 1:1 | UNIT: M/M | DRN BY: Eric | DATE: 12/6-13 | NUTEK CORPORATION | | | |
| MATERIAL | CHK BY: YYS | TITLE: AS | | GSRS-1554 TX | | | |
| FINISH | APPD BY: VICTOR | SIZE: A4 | DEPT: | DRAWING NO: 102I0070-3 | REV: 1 | | |
| CODE | SHEET OF | | | | | | |

| REVISIONS | | | | |
|-----------|-----------|---------------------|------|---------|
| REV. | ACC. | DESCRIPTION | DRN. | DATE |
| 1 | 1/29 mail | modify screen print | Eric | 1/29-14 |



| PART | P/N |
|------------------------------|----------|
| CASE | IASN0M03 |
| TOP KEYPAD | NKSN0BB0 |
| SIDE KEYPAD | NKSN1BA0 |
| METAL LOOP | MDSN0S00 |
| BAT. CLIP(+) | MCDM9G00 |
| elastomer conductive contact | NADG21AA |
| BATTERY | CR2032 |
| KEY CHAIN | MA160000 |
| SCREW | MIF17004 |

BODY MATERIAL : PC/ABS

1. Texture is same as MT-11010

2. Radius will be 0.2 if not specified.

*Tolerance please refer specification of tolerance limits 'C'

| DIMENSION | INJECT TOLERANCE SPEC. | | | |
|-----------|------------------------|------|------|---|
| | GRADE | A | B | C |
| UNDER 6 | ± | ± | ± | ± |
| 6-30 | 0.08 | 0.16 | 0.30 | |
| 30-120 | 0.10 | 0.20 | 0.40 | |
| 120-300 | 0.20 | 0.40 | 0.80 | |
| | 0.40 | 0.80 | 2.00 | |

| | | | | | |
|------------|----------------|---------------|---------------|-----------------------|-------|
| SCALE: 1:1 | UNIT: M/M | DRN BY Eric | DATE 12/6-'13 | NUTEK CORPORATION | |
| MATERIAL | CHK BY YYS | DATE 12/6-'13 | TITLE AS | | |
| FINISH | APPD BY VICTOR | DATE 12/6-'13 | OBRS-1554 TX | | |
| CODE | SHEET OF | SIZE A4 | DEPT | DRAWING NO 10210040-2 | REV 1 |