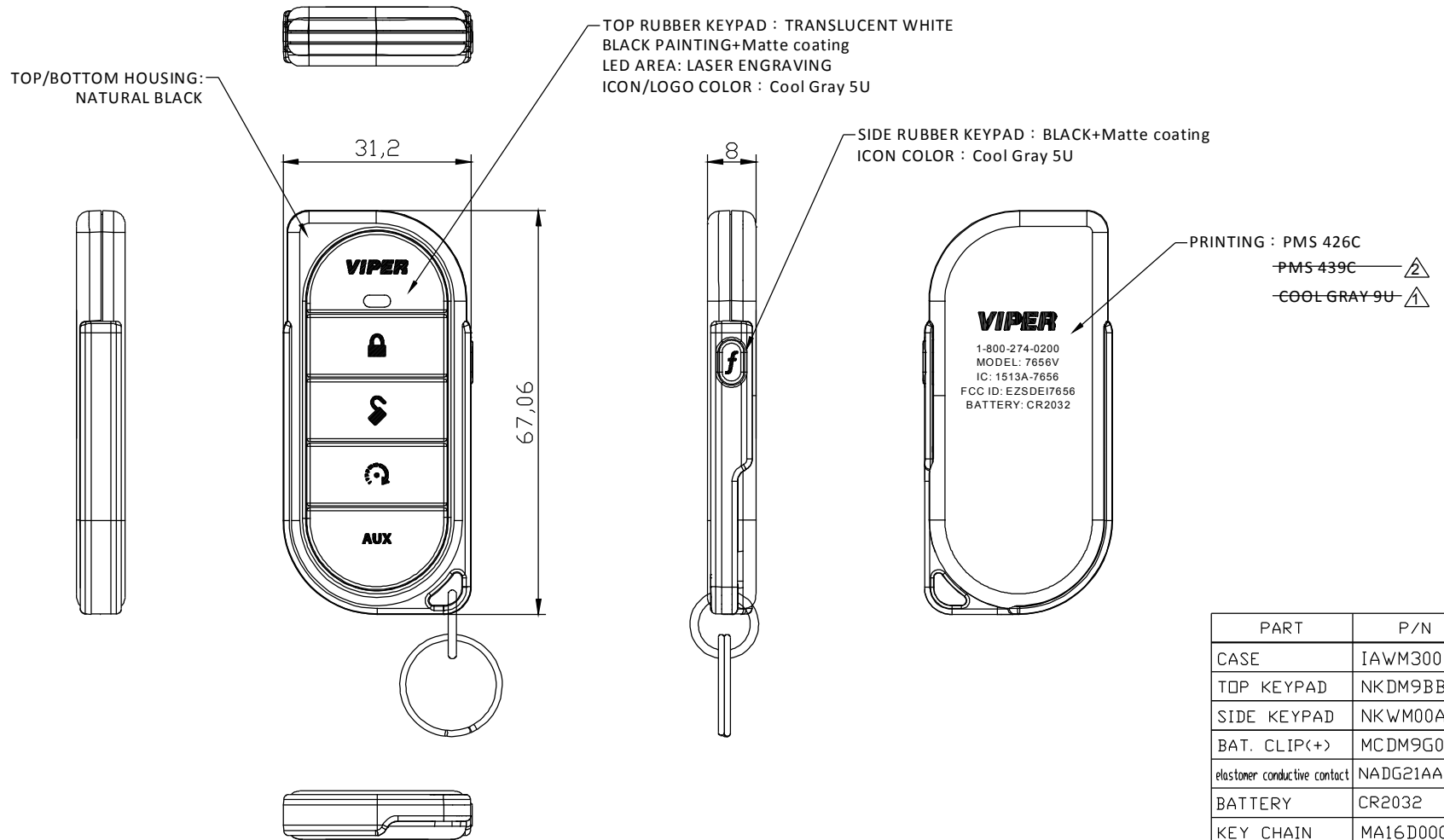


REVISIONS				
REV.	ACC.	DESCRIPTION	DRN.	DATE
△	1/2 E-MAIL	MODIFY BOT. PRINTING COLOR	Eric	1/2-'13
△	3/21 E-MAIL	MODIFY BOT. PRINTING COLOR	Eric	3/21-'13



PART	P/N
CASE	IAWM3001
TOP KEYPAD	NKDM9BB0
SIDE KEYPAD	NKWM00A0
BAT. CLIP(+)	MCDM9G00
elastomer conductive contact	NADG21AA
BATTERY	CR2032
KEY CHAIN	MA16D000

BODY MATERIAL : PC/ABS

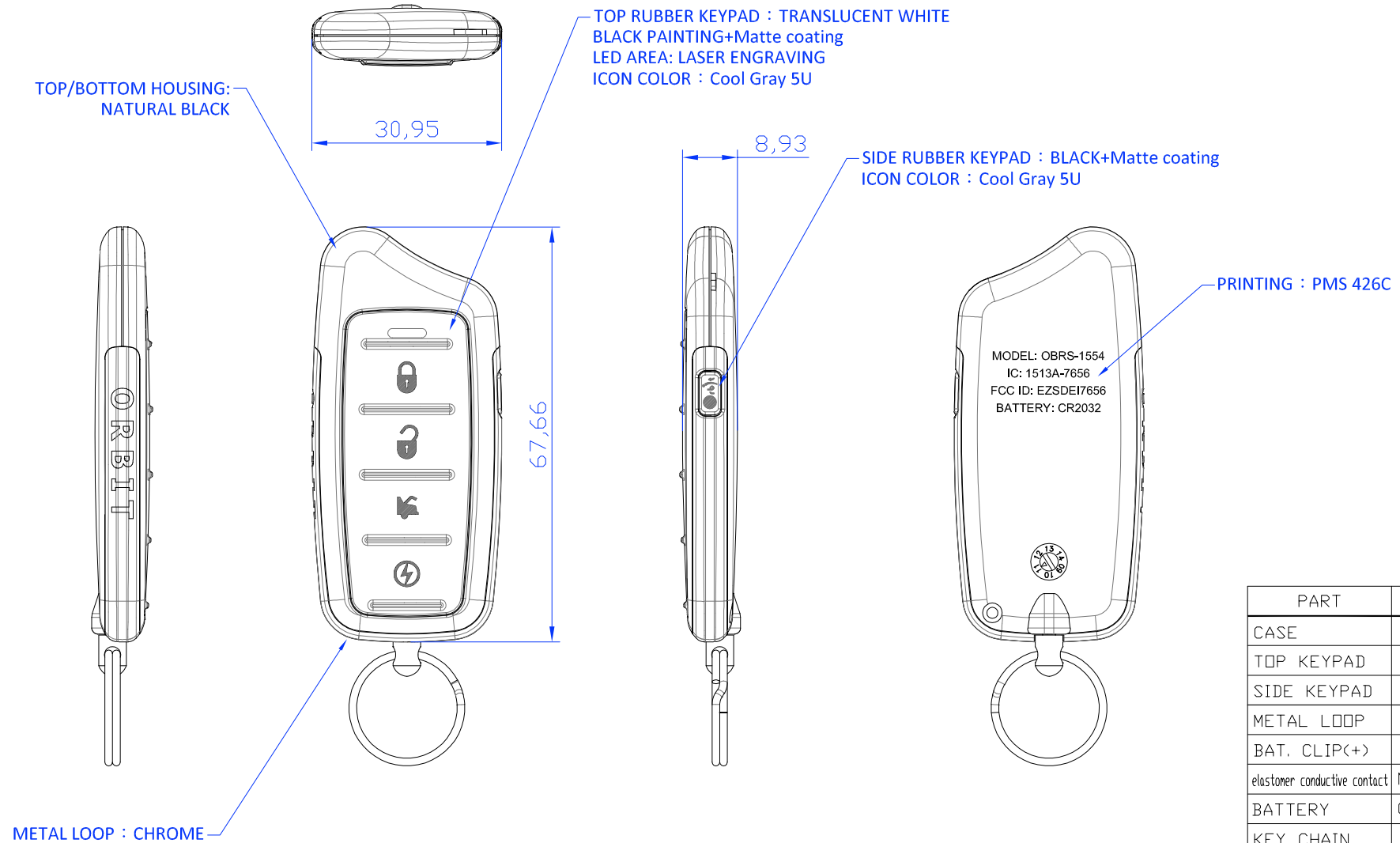
1. Texture is same as MT-11010
2. Radii will be 0.2 if not specified.

\*Tolerance please refer specification of tolerance limits "c"  
INJECT TOLERANCE SPEC.

DIMENSION	GRADE	A	B	C
		±	±	±
UNDER 6		0.08	0.16	0.30
6-30		0.10	0.20	0.40
30-120		0.20	0.40	0.80
120-300		0.40	0.80	2.00

SCALE: 1:1	UNIT: M/M	DRN BY Eric	DATE 10/29-'12	<b>NUTEK CORPORATION</b>			
MATERIAL	CHK BY YYS			TITLE DEI 7656V LED TX			
FINISH	APPD BY VICTOR			SIZE A4	DEPT	DRAWING NO 10110260	REV 2
CODE	SHEET	OF					

REVISIONS				
REV.	ACC.	DESCRIPTION	DRN.	DATE
△				



PART	P/N
CASE	IASN0002
TOP KEYPAD	NKSN0B02
SIDE KEYPAD	NKSN1B01
METAL LOOP	MDSN0S00
BAT. CLIP(+)	MCDM9G00
elastomer conductive contact	NADG21AA
BATTERY	CR2032
KEY CHAIN	MA16D000
SCREW	MIF17004

**BODY MATERIAL : PC/ABS**

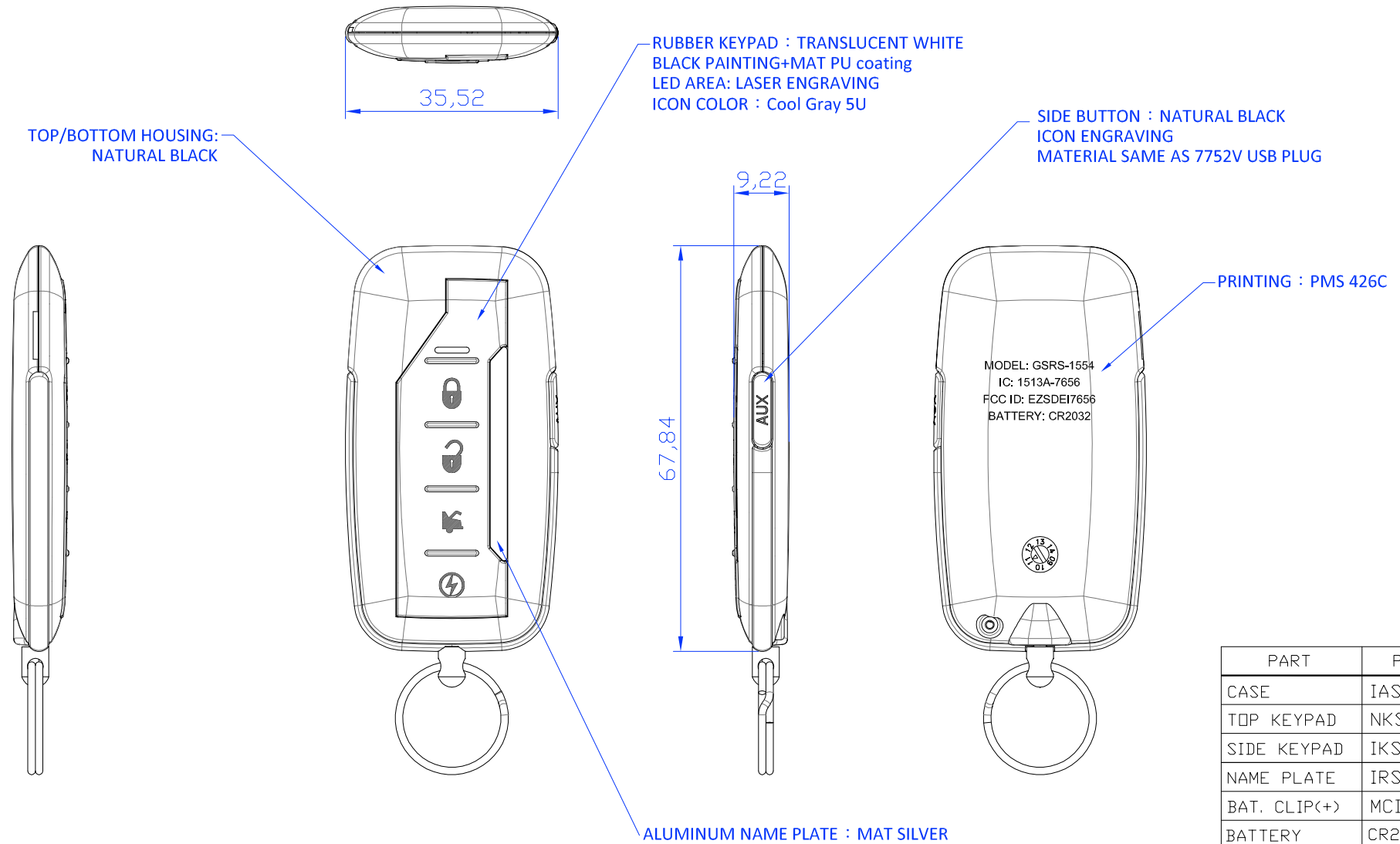
- Texture is same as MT-11010
- Radii will be 0.2 if not specified.

\*Tolerance please refer specification of tolerance limits "c"  
INJECT TOLERANCE SPEC.

DIMENSION	GRADE	A	B	C
		±	±	±
UNDER 6		0.08	0.16	0.30
6-30		0.10	0.20	0.40
30-120		0.20	0.40	0.80
120-300		0.40	0.80	2.00

SCALE: 1:1	UNIT: M/M	DRN BY Eric	DATE 4/8-'13	<b>NUTEK CORPORATION</b>	
MATERIAL	CHK BY YYS	TITLE AS		OBRS-1554 TX	
FINISH	APPD BY VICTOR	SIZE A4	DEPT	DRAWING NO 102I0040-1	REV 0
CODE	SHEET	OF			

REVISIONS				
REV.	ACC.	DESCRIPTION	DRN.	DATE
△1				
△2				



PART	P/N
CASE	IASN3002
TOP KEYPAD	NKSN2BB0
SIDE KEYPAD	IKSN20A0
NAME PLATE	IRSN2S00
BAT. CLIP(+)	MCDM9G00
BATTERY	CR2032
KEY CHAIN	MA160000
SCREW	MIP01445

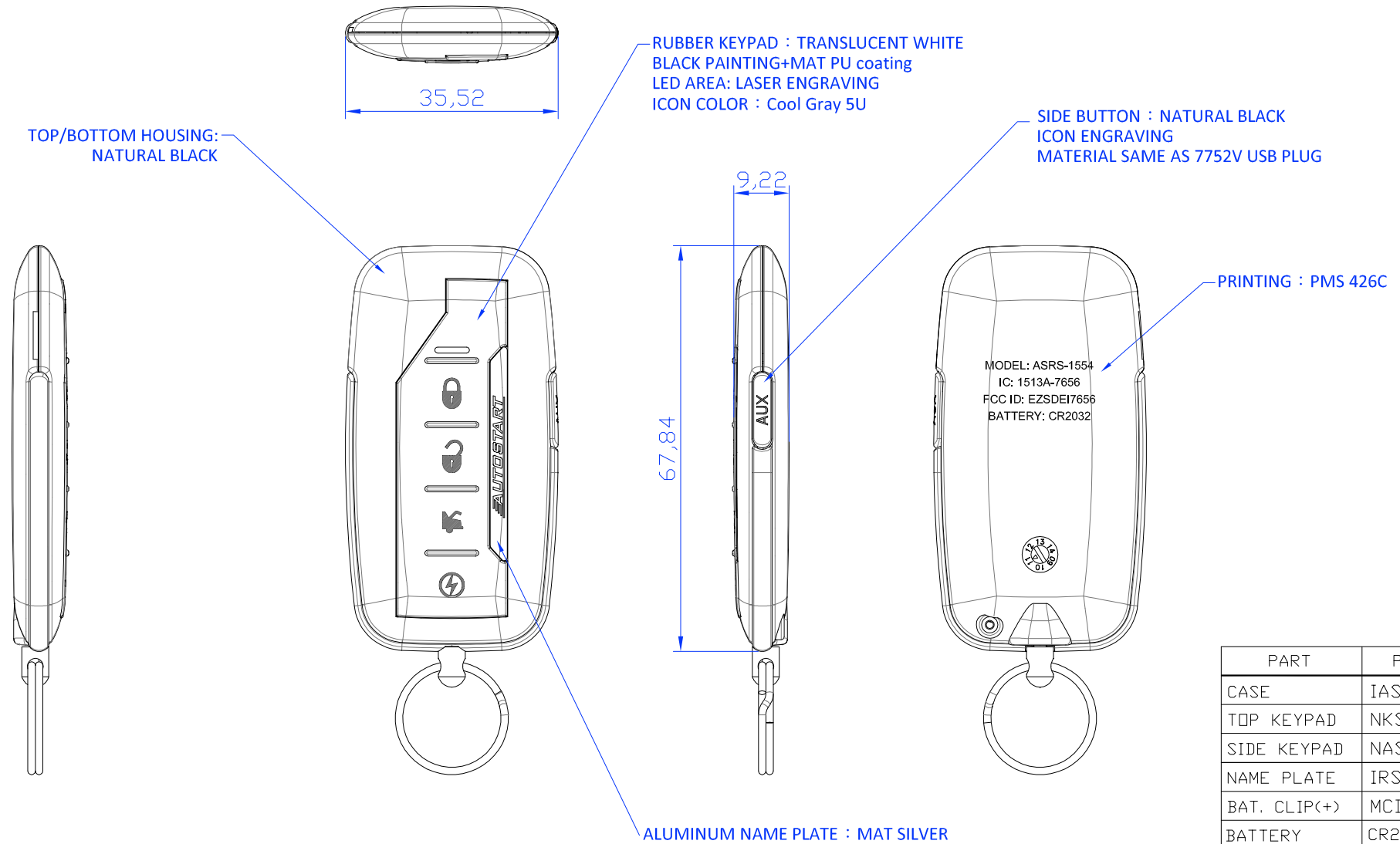
**BODY MATERIAL : PC/ABS**  
 1. Texture is same as MT-11010  
 2. Radius will be 0.2 if not specified.

\*Tolerance please refer specification of tolerance limits \*cf INJECT TOLERANCE SPEC.

GRADE	A	B	C
UNDER 6	± 0.08	± 0.16	± 0.30
6-30	± 0.10	± 0.20	± 0.40
30-120	± 0.20	± 0.40	± 0.80
120-300	± 0.40	± 0.80	± 2.00

SCALE: 1:1	UNIT: M/M	DRN BY Eric	DATE 5/17-'13	<b>NUTEK CORPORATION</b>	
MATERIAL		CHK BY YYS		TITLE AS	
FINISH		APPD BY VICTOR		GSRS-1554 TX	
CODE		SHEET OF		SIZE A4	DEPT DRAWING NO 102I0070-1
					REV 0

REVISIONS				
REV.	ACC.	DESCRIPTION	DRN.	DATE
△1				
△2				



PART	P/N
CASE	IASN3001
TOP KEYPAD	NKSN2BB0
SIDE KEYPAD	NASN20A0
NAME PLATE	IRSN2S00
BAT. CLIP(+)	MCDM9G00
BATTERY	CR2032
KEY CHAIN	MA160000
SCREW	MIP01445

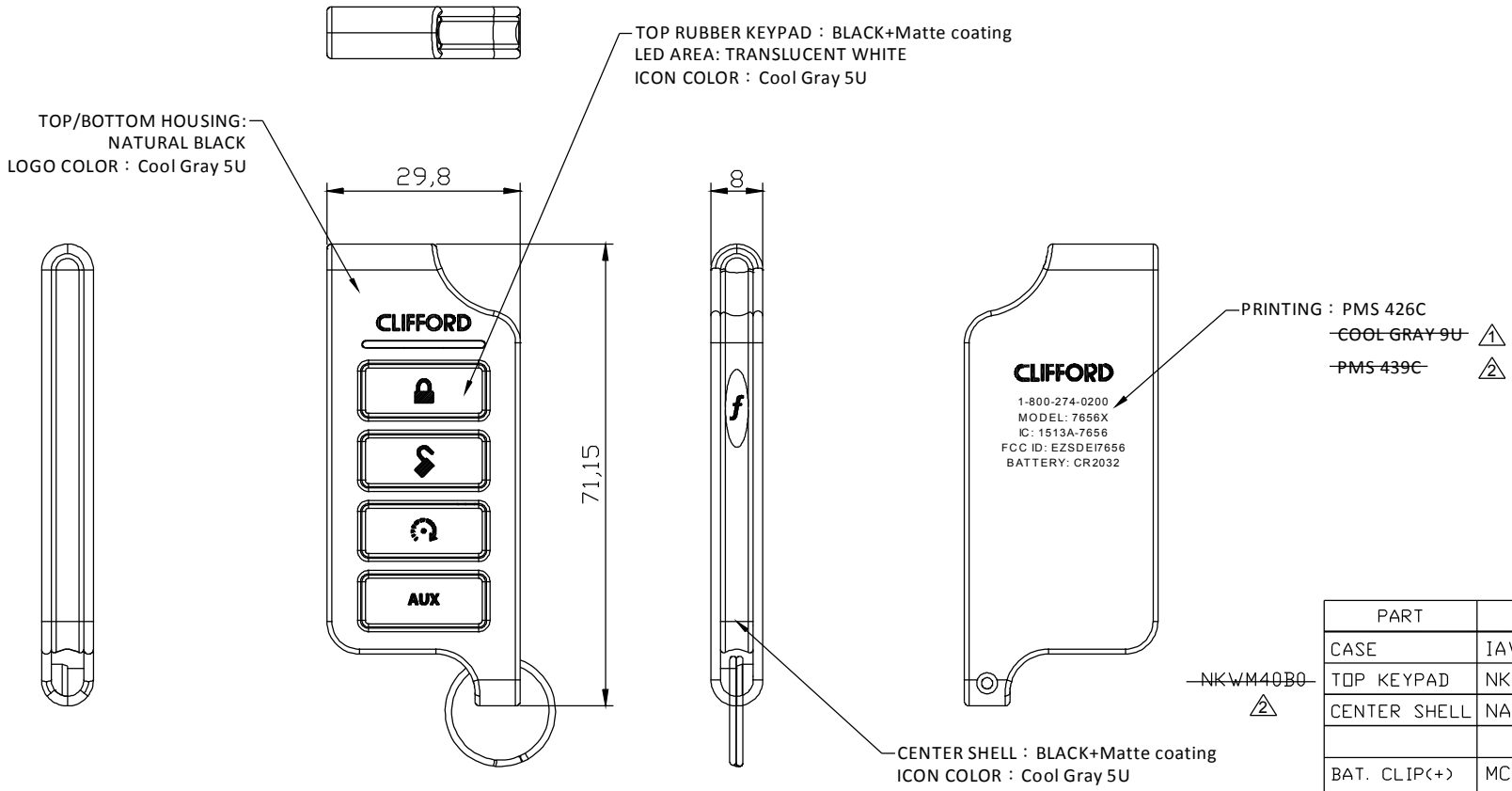
**BODY MATERIAL : PC/ABS**  
 1. Texture is same as MT-11010  
 2. Radius will be 0.2 if not specified.

\*Tolerance please refer specification of tolerance limits \*cf INJECT TOLERANCE SPEC.

GRADE	A	B	C
UNDER 6	± 0.08	± 0.16	± 0.30
6-30	± 0.10	± 0.20	± 0.40
30-120	± 0.20	± 0.40	± 0.80
120-300	± 0.40	± 0.80	± 2.00

SCALE: 1:1	UNIT: M/M	DRN BY Eric	DATE 4/16-'13	<b>NUTEK CORPORATION</b>	
MATERIAL		CHK BY YYS		TITLE AS	
FINISH		APPD BY VICTOR		ASRS-1554 TX	
CODE		SHEET OF		SIZE A4	DEPT DRAWING NO 102I0070
					REV 0

REVISIONS				
REV.	ACC.	DESCRIPTION	DRN.	DATE
1		MODIFY CASE PIN & BOT. PRINTING COLOR	Eric	11/28-'12
2	3/21-'13 MAIL	MODIFY BOT. PRINTING COLOR & KEYPAD PIN	Eric	3/21-'13



PART	P/N
CASE	IAWM40A2
TOP KEYPAD	NKWM4BB0
CENTER SHELL	NAWM4BA0
BAT. CLIP(+)	MCDM9G00 + IADA2000
elastomer conductive contact	NADG21AA
BATTERY	CR2032
KEY CHAIN	MA16B000
SCREW	MIF17005

BODY MATERIAL : PC/ABS  
 1. Texture is same as MT-11010  
 2. Radius will be 0.2 if not specified.

\*Tolerance please refer specification of tolerance units "C"

GRADE	A	B	C
DIMENSION	±	±	±
UNDER 6	0.08	0.16	0.30
6-30	0.10	0.20	0.40
30-120	0.20	0.40	0.80
120-300	0.40	0.80	2.00

SCALE: 1:1	UNIT: M/M	DRN BY: Eric	DATE: 11/28-'12	NUTEK CORPORATION	
MATERIAL	FINISH	CHK BY: YYS	APPD BY: VICTOR	TITLE: DEI 7656X LED TX	
CODE	SHEET	OF	SIZE: A4	DEPT	DRAWING NO: 10110280-1
				REV	2