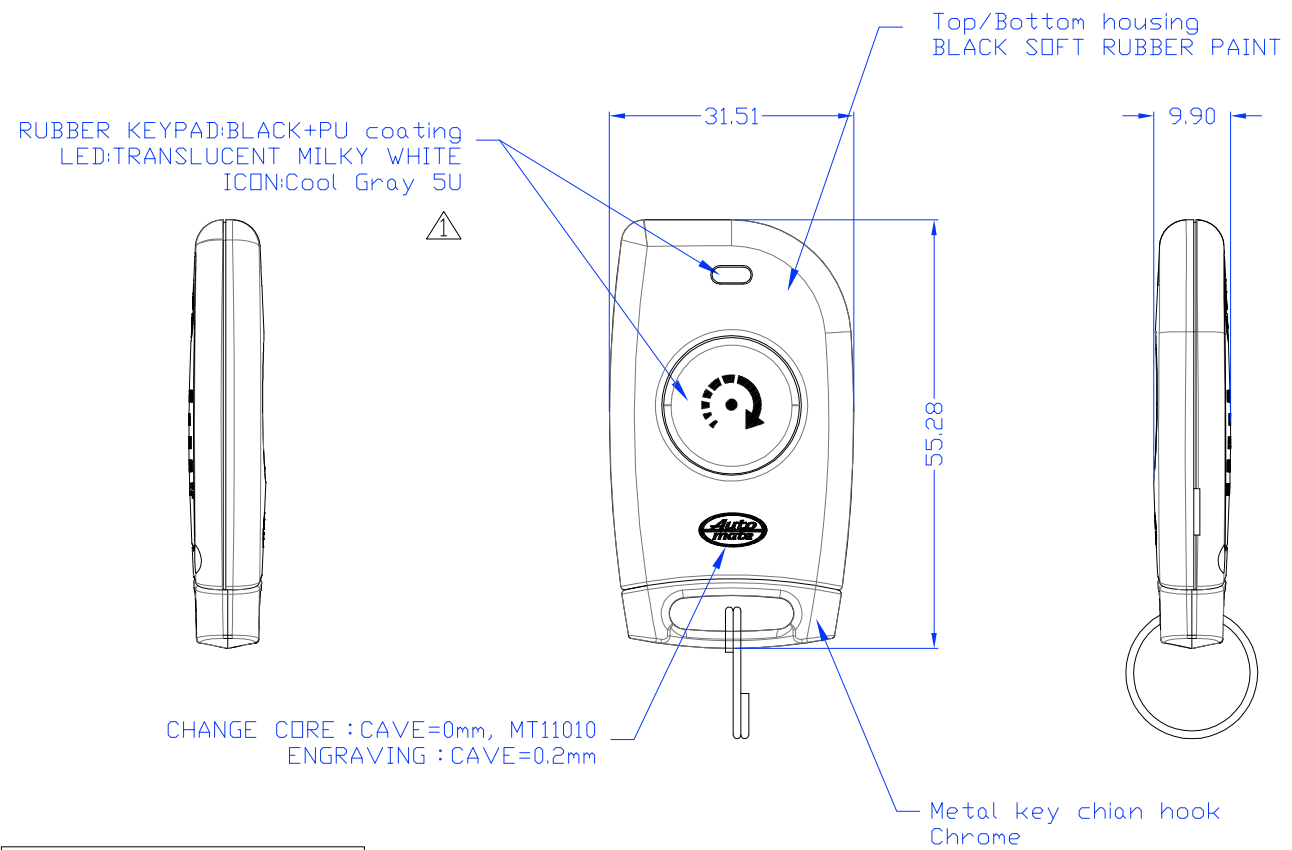
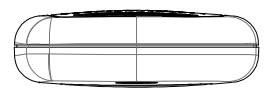
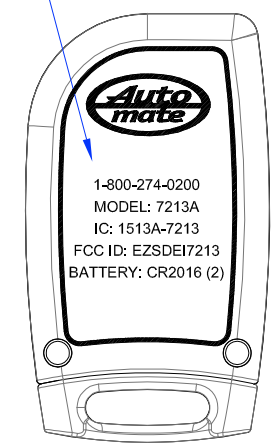


REVISIONS				
REV.	ACC.	DESCRIPTION	DRN.	DATE
①	11/16-'11 EMAIL	REVISED ICON COLOR	Eric	11/16-'11
②	7/3-'12 EMAIL	modify engraving	Eric	7/3-'12



CHANGE CORE : CAVE=0mm, MT11010
ENGRAVING : CAVE=0.2mm



~~IC: 1513A-7211
FCC ID: EZSDEI7211~~

PART	P/N
CASE	IADL6BA2
TOP KEYPAD	NKDL60A0
KEY LOOP	MDDL6S00
KEY CHAIN	MA150000
BATTERY	BTCR2016 *2
SCREW	MIF17004 *2

BODY MATERIAL : PC/ABS

- Texture is same as MT-11010
- Radiious will be 0.2 if not specified.

*Tolerance please refer specification of tolerance limits 'C'

DIMENSION	INJECT TOLERANCE SPEC.		
	A	B	C
UNDER 6	± 0.08	± 0.16	± 0.30
6~30	± 0.10	± 0.20	± 0.40
30~120	± 0.20	± 0.40	± 0.80
120~300	± 0.40	± 0.80	± 2.00

SCALE: 1:1	UNIT: M/M	DRN BY ERIC	DATE 10/3-'11	NUTEK CORPORATION			
MATERIAL		CHK BY YYS	TITLE DEI		7213A		
FINISH		APPD BY VICTOR	SIZE A4	DEPT	DRAWING NO 10010370	REV 2	
CODE		SHEET	OF				