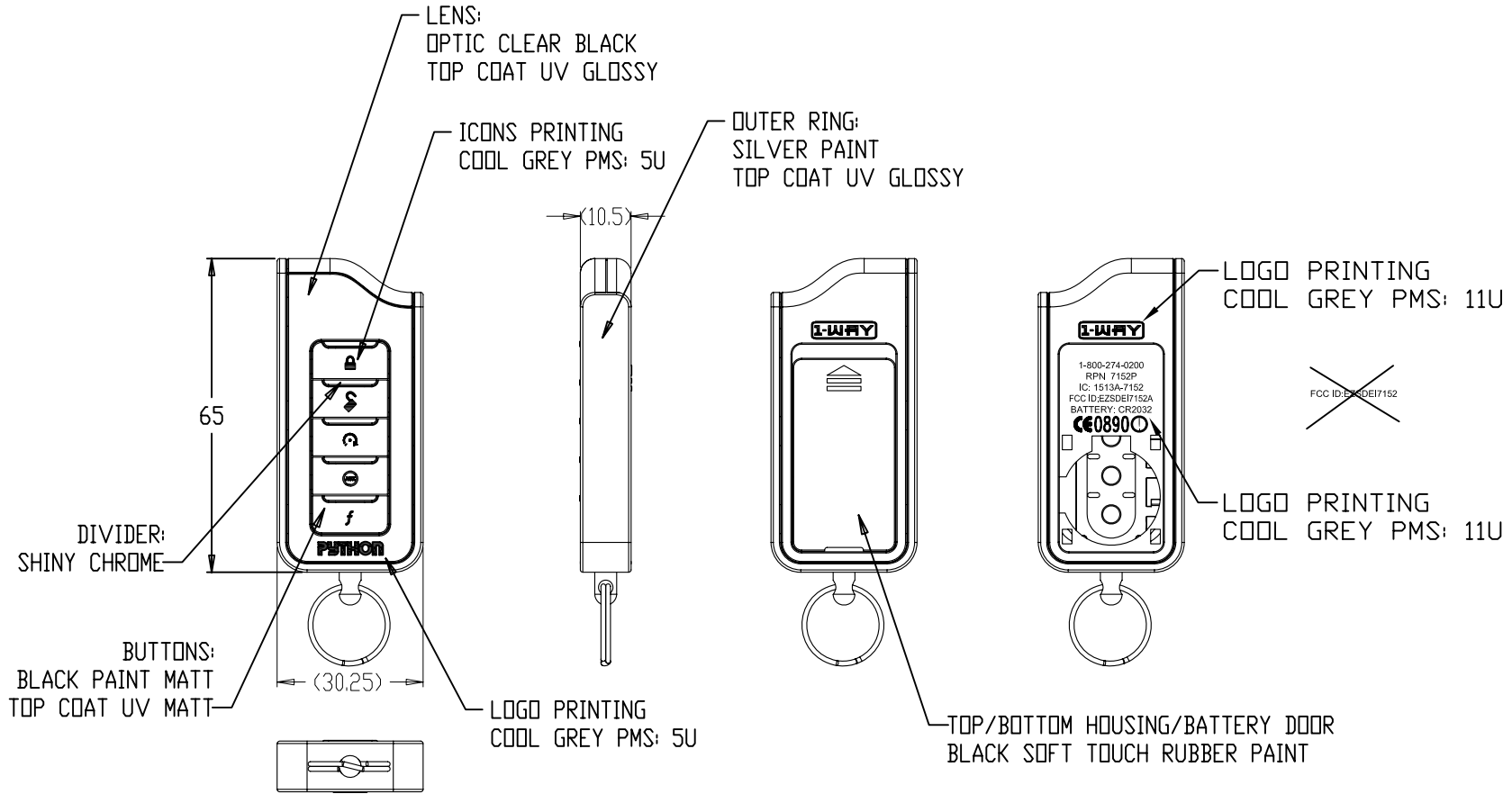


NOTES:



**Directed Electronics, Inc.**

PROPRIETARY INFORMATION  
STATEMENT  
THIS DOCUMENT CONTAINS  
CONFIDENTIAL AND PROPRIETARY  
INFORMATION OF DIRECTED  
ELECTRONICS INC. AND MAY NOT  
BE DISCLOSED TO OTHERS.  
REPRODUCED, OR USED WITHOUT  
WRITTEN CONSENT FROM  
DIRECTED ELECTRONICS INC.

REV	APPROVED	DATE	DESCRIPTION	TITLE:
				7152P, PYTHON HHU LED 1-WAY

MATERIAL: <b>SEE NOTE</b>		
FINISH: <b>SEE NOTE</b>		
TOLERANCE	APPROVED DATE:	
D: ±0.3		
0.0: ±0.2	APPROVED BY:	
0.00: ±0.10	TVN	
A*: ±1/2"		
PCM:	DATE:	
KW		
PDM:	DATE:	
TM		
DESIGN:	DATE:	
TVN	02-26-08	
PROJECT NO:	SIZE	
7148	A3	
FILE NAME:		
SCALE:	UNIT:	REV.
1:1	MM	3
DWG. NO.		
123-0169		
SHEET: 1 OF 1		

NOTES:

**Directed Electronics, Inc.**

PROPRIETARY INFORMATION  
STATEMENT  
THIS DOCUMENT CONTAINS  
CONFIDENTIAL AND PROPRIETARY  
INFORMATION OF DIRECTED  
ELECTRONICS INC. AND MAY NOT  
BE DISCLOSED TO OTHERS.  
REPRODUCED, OR USED WITHOUT  
WRITTEN CONSENT FROM  
DIRECTED ELECTRONICS INC.

REV	APPROVED	DATE	DESCRIPTION	TITLE:
				7152X, CLIFFORD HHU LED 1-WAY

MATERIAL:			SEE NOTE
FINISH:			SEE NOTE
TOLERANCE	APPROVED DATE:		
0.0 : ±0.3			
0.0 : ±0.2			
0.00 : ±0.10	APPROVED BY:	TVN	
A° : ±1/2°			
PCM:	DATE:		
KW			
PDM:	DATE:		
TM			
DESIGN:	DATE:	02-26-08	
TVN			
PROJECT NO:	SIZE		
7148	A3		
FILE NAME:			
SCALE:	UNIT:	REV.	
1:1	MM	3	
DWG. NO.			
123-0170			
SHEET: 1 OF 1			

TOP/BOTTOM HOUSING:  
SILVER COLOR MUSASHI PAINT  
CLEAR TOP COAT UV MATT

BUTTONS: FLAT BLACK PAINT  
CLEAR COAT UV MATT

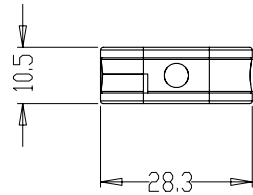
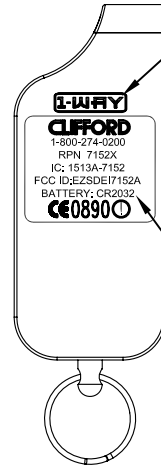
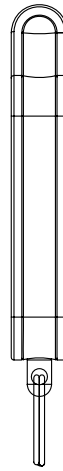
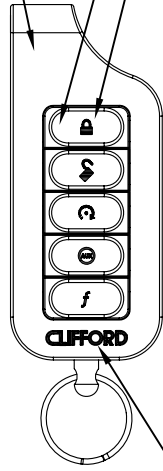
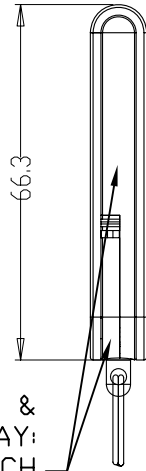
ICON PRINTING  
COOL GREY PMS: 5U

LOGO PRINTING  
COOL GREY PMS: 2U

LOGO PRINTING  
COOL GREY PMS: 2U

LOGO PRINTING  
COOL GREY PMS: 5U

CENTER SHELL &  
BATTERY TRAY:  
BLACK SOFT TOUCH  
RUBBER PAINT



10.5

F  
E  
D  
C  
B  
A

8 7 6 5 4 3 2 1

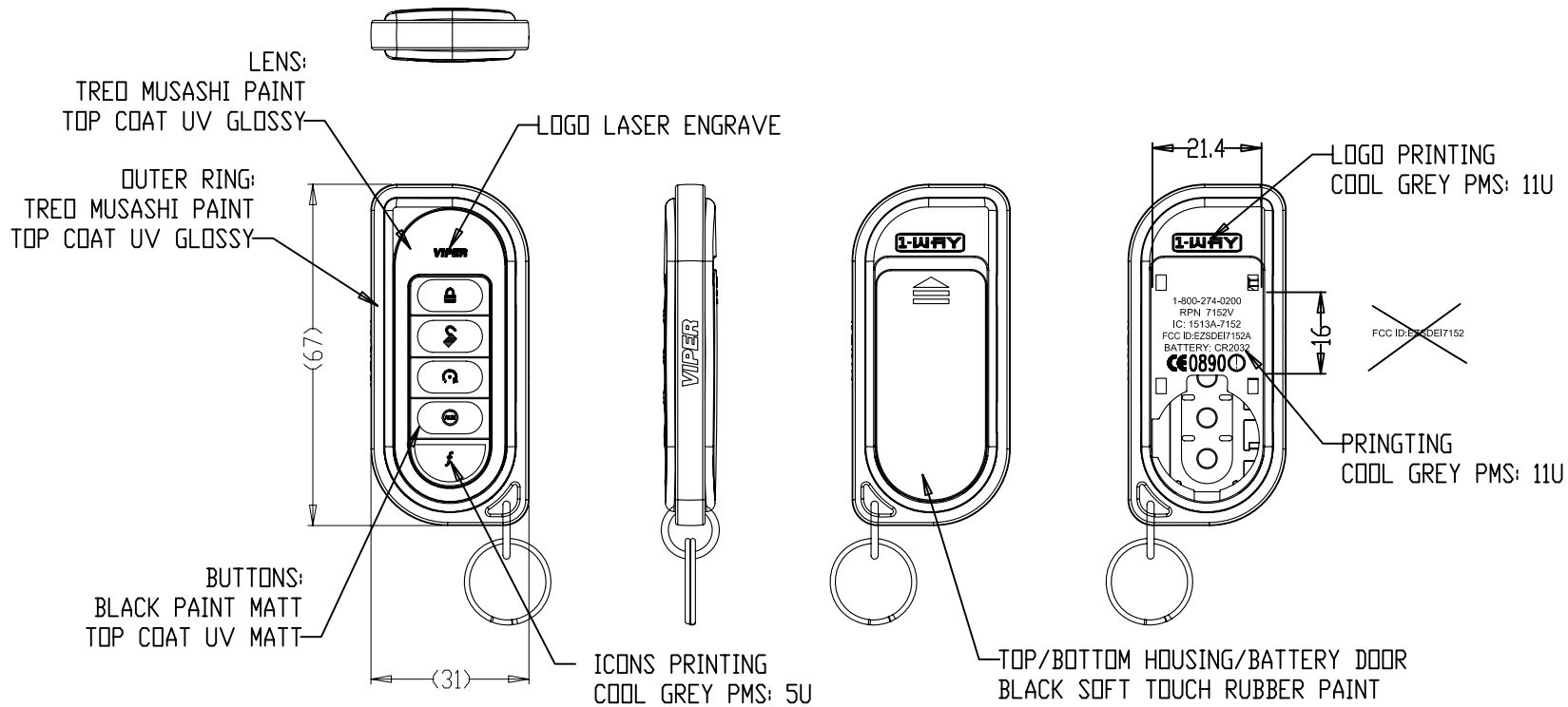
8 7 6 5 4 3 2 1

NOTES:

LENS: PROCESSING

1. INJECTION CLEAR PC
2. FIRST COAT TRED MUSASHI PAINT
3. LOGO LASER ENGRAVING.
4. TOP COAT UV GLOSSY

# OPTION - 1



**Directed Electronics, Inc.**

PROPRIETARY INFORMATION  
STATEMENT  
THIS DOCUMENT CONTAINS  
CONFIDENTIAL AND PROPRIETARY  
INFORMATION OF DIRECTED  
ELECTRONICS INC. AND MAY NOT  
BE DISCLOSED TO OTHERS.  
REPRODUCED, OR USED WITHOUT  
WRITTEN CONSENT FROM  
DIRECTED ELECTRONICS INC.

REV	APPROVED	DATE	DESCRIPTION	TITLE:
				7152V, VIPER HHU LED 1-WAY

MATERIAL: <b>SEE NOTE</b>		
FINISH: <b>SEE NOTE</b>		
TOLERANCE	APPROVED DATE:	
0.0 : ±0.3		
0.0 : ±0.2		
0.00 : ±0.10	APPROVED BY:	
A° : ±1/2°	TVN	
PCN:	DATE:	
KW		
PDM:	DATE:	
TM		
DESIGN:	DATE:	
TVN	02-26-08	
PROJECT NO:	SIZE	
7148	A3	
FILE NAME:		
SCALE:	UNIT:	REV.
1:1	MM	3
DWG. NO.		
123-0168		
SHEET: 1 OF 1		