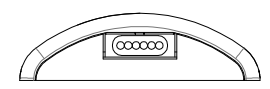
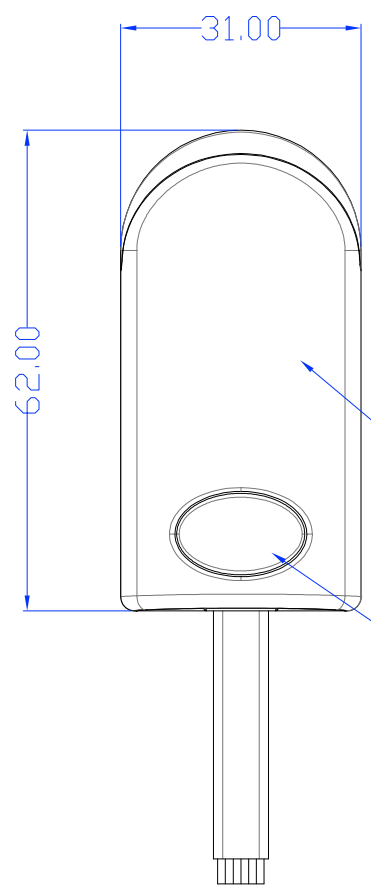
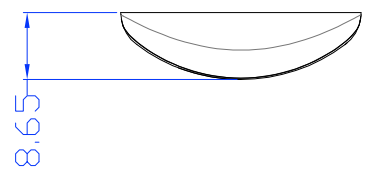


REVISIONS				
REV.	ACC.	DESCRIPTION	DRN.	DATE
①	3/6 E-mail	modify bot. core	Eric	3/6-'13
②		modify foam tape size	Eric	4/22-'13



TOP CASE
HIGH HEAT ABS+UV BLACK

BUTTON
HIGH HEAT ABS+UV BLACK

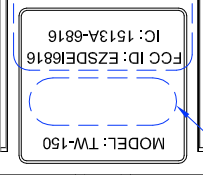
BOTTOM CASE : CLEAR BLACK PC+UV

CHANGE CORE : CAVE=0mm, MT11010
ENGRAVING : CAVE=0.25mm

NTDMA000



K label



PART	P/N
TOP CASE	IMDMA000
BOT CASE	INDMAC02
BUTTON	IKDMA000
TAPE	NTDMA000

BODY MATERIAL :
1. Texture is same as MT-11010
2. Radius will be 0.2 if not specified.

*Tolerance please refer specification of tolerance limits "C"

DIMENSION	INJECT TOLERANCE SPEC.		
	A	B	C
UNDER 6	± 0.08	± 0.16	± 0.30
6~30	± 0.10	± 0.20	± 0.40
30~120	± 0.20	± 0.40	± 0.80
120~300	± 0.40	± 0.80	± 2.00

SCALE: 1:1	UNIT: M/M	DRN BY: Eric	DATE: 3/4-'13	NUTEK CORPORATION		
MATERIAL	CHK BY: YYS	DATE: 3/6-'13	TITLE: DEI	TW-150 IVU		
FINISH	APPD BY: Victor	DATE: 3/6-'13	SIZE: A4	DEPT:	DRAWING NO: 10210110-1	REV: 2
CODE	SHEET	OF				