



## EWQINTELSIG2 / 846D-INTELSIG2 Labels

---

10th April 2023

Version 1

# Contents

<b>1</b>	<b>Revision History</b> . . . . .	<b>2</b>
<b>2</b>	<b>Marking Information</b> . . . . .	<b>3</b>

# List of Figures

2.1	Marking Location(s) . . . . .	3
2.2	Regional Marking Information . . . . .	3
2.3	Marking Location(s) II . . . . .	4

# 1 Revision History

<b>Revision</b>	<b>Date</b>	<b>Author(s)</b>	<b>Description</b>
1	10th April 2023	DRB	Intial

## 2 Marking Information

*Custom Marking Region* can be used for customer logos, content, etc.



Figure 2.1: Marking Location(s)

### USA\_Canada Regional Info A

This device complies with part 15 of the FCC Rules.  
Operation is subject to the following two conditions:  
(1) This device may not cause harmful interference, and  
(2) this device must accept any interference received, including  
Interference that may cause undesired operation.

### USA\_Canada Regulatory Info B

**FCC ID: EWQINTELISG2**  
**IC: 864D-INTELISG2**  
**HVIN: INTELIS-GAS2**

Figure 2.2: Regional Marking Information

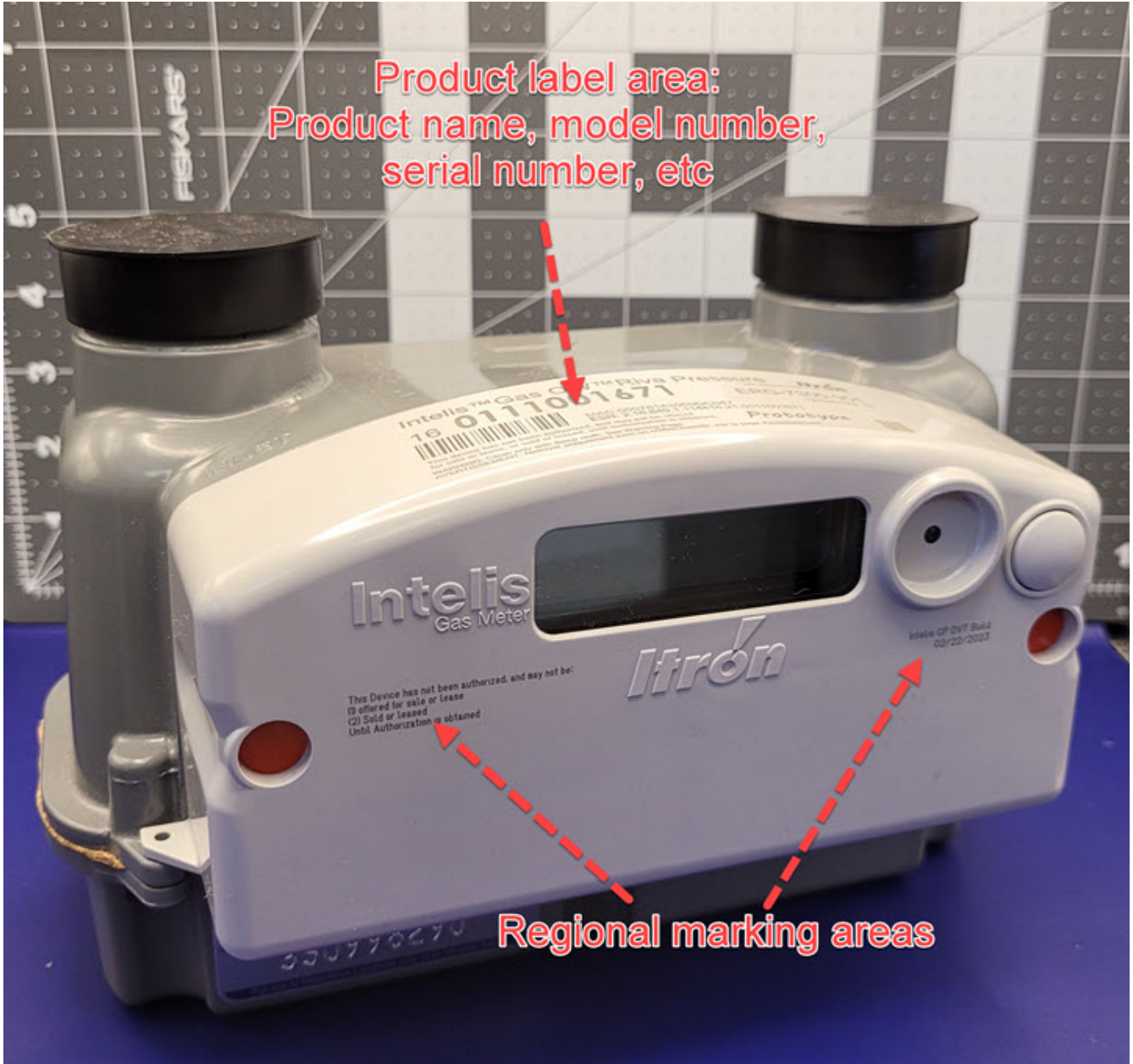


Figure 2.3: Marking Location(s) II