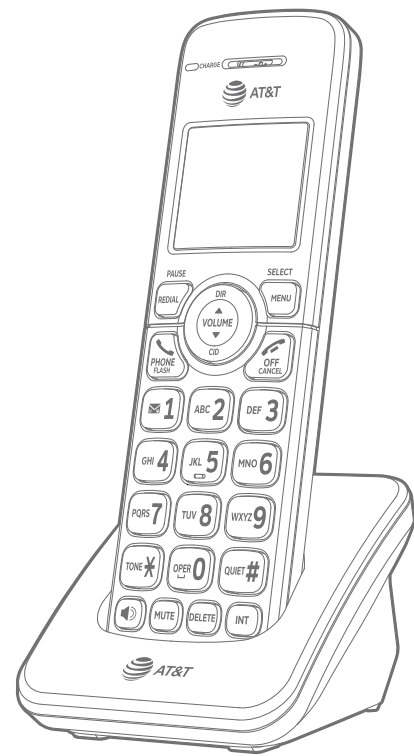




# AT&T

## User's manual

EL52119/EL52219/EL52319  
DECT 6.0 cordless telephone/  
answering system with  
caller ID/call waiting



# Congratulations

on purchasing your new AT&T product. Before using this AT&T product, please read **Important safety information** on pages 89-91 of this user's manual. Please thoroughly read the user's manual for all the feature operations and troubleshooting information you need to install and operate your new AT&T product. You can also visit our website at **<https://telephones.att.com>** or call **1 (800) 222-3111**. In Canada, dial **1 (866) 288-4268**.

This telephone meets the California Energy Commission regulations for energy consumption. Your telephone is set up to comply with the energy-conserving standards right out of the box. No further action is necessary.

This telephone system is compatible with certain AT&T DECT 6.0 cordless headsets and speakerphones.

Visit **<https://telephones.att.com/accessories>** for a list of compatible cordless headsets and speakerphones.

Model number: EL52119 (one-handset system)  
EL52219 (two-handset system)  
EL52319 (three-handset system)

Type: DECT 6.0 cordless telephone/answering system with caller ID/call waiting

Serial number: \_\_\_\_\_

Purchase date: \_\_\_\_\_

Place of purchase: \_\_\_\_\_

Both the model and serial number of your AT&T product can be found on the bottom of the telephone base.



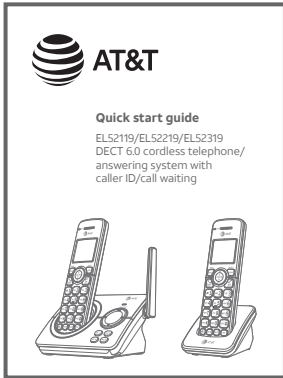
Telephones identified with this logo have reduced noise and interference when used with most T-coil equipped hearing aids and cochlear implants. The TIA-1083 Compliant Logo is a trademark of the Telecommunications Industry Association. Used under license.



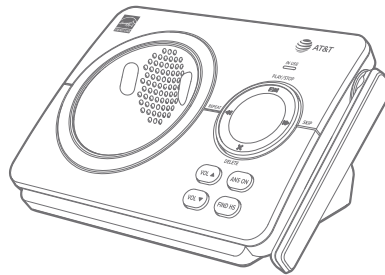
The ENERGY STAR® program ([www.energystar.gov](http://www.energystar.gov)) recognizes and encourages the use of products that save energy and help protect our environment. We are proud to mark this product with the ENERGY STAR® label indicating it meets the latest energy efficiency guidelines.

# Parts checklist

Your telephone package contains the following items. Save your sales receipt and original packaging in the event warranty service is necessary.



Quick start guide



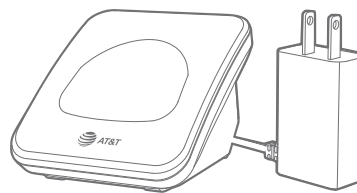
Telephone base



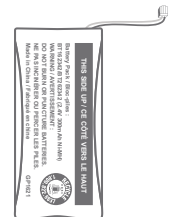
Cordless handset  
(1 for EL52119)  
(2 for EL52219)  
(3 for EL52319)



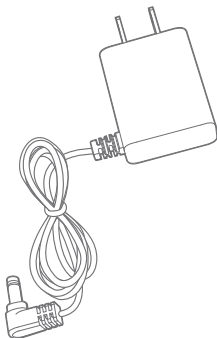
Battery compartment cover  
(1 for EL52119)  
(2 for EL52219)  
(3 for EL52319)



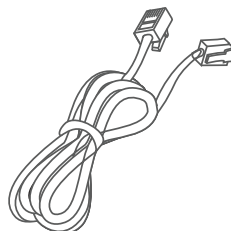
Charger for cordless handset  
with power adapter installed  
(1 for EL52219)  
(2 for EL52319)



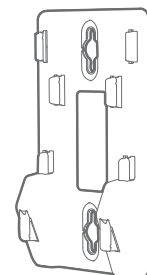
Battery for cordless  
handset  
(1 for EL52119)  
(2 for EL52219)  
(3 for EL52319)



Power adapter for  
telephone base



Telephone line cord

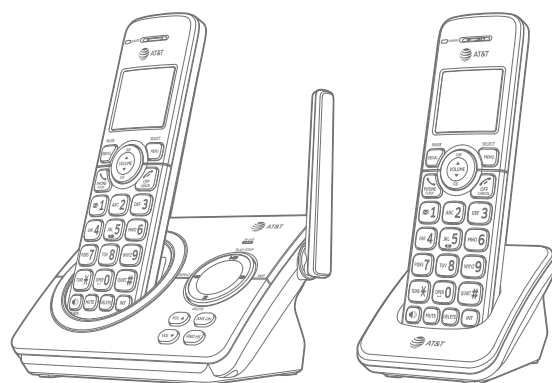


Wall-mount bracket

# User's manual

EL52119/EL52219/EL52319

DECT 6.0 cordless telephone/  
answering system with  
caller ID/call waiting



## Table of contents

### Getting started

Installation .....	1
Quick reference guide - handset.....	2
Quick reference guide - telephone base.....	6
Telephone base and charger installation .....	7
Battery installation and charging .....	8
Battery installation.....	8
Battery charging.....	10
Wall-mount installation.....	11
Tabletop to wall-mount installation.....	11
Wall-mount to tabletop installation.....	13

### Telephone settings

Menu overview.....	14
Handset settings.....	15
Ringer volume.....	15
Ringer tone.....	15
LCD language.....	16
Set speed dial voicemail number .....	16
Clear voicemail indication .....	17
Key tone.....	17
Set date/time .....	18
Home area code.....	19
Dial mode.....	19
QUIET mode .....	20
Telephone base ringer volume .....	21

### Telephone operation

Making, answering and ending calls.....	22
Making a call.....	22
Temporary ringer silencing.....	22
Answering a call.....	23
Handset speakerphone.....	23
Ending a call.....	23
Redial .....	24
View numbers in the redial list.....	24
Call a number from the redial list.....	24
Copy a number from the redial list to the directory.....	25
Delete a number in the redial list .....	25
Options while on calls .....	26
Volume control .....	26
Mute.....	26
Flash/call waiting.....	26
Temporary tone dialing.....	27
Chain dialing.....	27
Join a call in progress.....	28
Find handset.....	29
Intercom.....	30
Make and answer an intercom call.....	30
Answer an incoming call during an intercom call .....	31
Call transfer using intercom .....	32

## Directory

Directory overview.....	33
Shared directory .....	33
Directory memory capacity .....	33
Exiting the directory.....	33
Create directory entries.....	34
Create a new directory entry .....	34
Add a predialed telephone number to the directory.....	36
Review the directory.....	37
Review directory entries .....	37
Search by name.....	38
Dial, delete and edit a directory entry .....	39
Dial a directory number .....	39
Delete a directory entry .....	39
Delete all directory entries .....	39
Edit a directory entry.....	40

## Caller ID

About caller ID.....	41
Information about caller ID with call waiting .....	41
About home area code.....	41
Caller ID log .....	42
How caller ID log works.....	42
Memory match.....	42
Caller ID operation.....	43
Missed (new) calls indicator .....	43
Review the caller ID log.....	43
View dialing options .....	44
Dial a caller ID log entry .....	45
Delete caller ID log entries.....	45
Save a caller ID log entry to the directory .....	46
Reasons for missing caller ID information....	47

## Call block

About call block.....	48
Call block.....	49
Add a call block entry .....	49
Review call block list.....	50
Save a caller ID log entry to call block list.....	50
Edit a call block entry.....	51
Delete a call block entry .....	52
Block calls without number .....	52
Mute first ring .....	52

## Answering system

Answering system settings.....	53
Announcement.....	53
Answer on/off.....	55
Voice guide .....	56
Call screening.....	57
Number of rings .....	58
Remote access code .....	59
Message alert tone .....	60
Answering system overview.....	61
Answering system and voicemail indicators.....	61
Using the answering system and voicemail together .....	61
Message capacity.....	62
Voice prompts .....	62
Call screening.....	63
Call intercept .....	64
Temporarily turn off the message alert tone.....	64
Message playback.....	65
Options during playback.....	66
Delete all old messages .....	67

Recording and playing memos .....	68
Record a memo .....	68
Play back memos .....	68
Message window displays .....	69
Remote access.....	70
Remotely access the answering system.....	70

## Appendix

Adding and registering handsets/ headsets/speakerphones .....	72
Deregistering handsets .....	73
Screen icons, indicator lights and alert tones.....	74
Screen icons.....	74
Handset indicator lights .....	74
Telephone base indicator lights .....	75
Handset alert tones.....	75
Telephone base alert tones.....	75
Handset display screen messages .....	76
Troubleshooting.....	78
Maintenance.....	88
Important safety information.....	89
Safety information .....	89
Especially about cordless telephones.....	90
Precautions for users of implanted cardiac pacemakers.....	91
ECO mode.....	91
Especially about telephone answering systems.....	91
FCC Part 68 and ACTA.....	92
FCC Part 15 .....	93
California Energy Commission battery charging testing instructions.....	94
Limited warranty .....	95

Technical specifications.....	98
DECT 6.0 digital technology .....	98
Telephone operating range.....	98
Simulated full-duplex handset speakerphone.....	98

## Index

Index.....	99
------------	----

## Installation

You must install and charge the battery before using the cordless handset.



See pages 8-10 for easy instructions.

Install the telephone base close to a telephone wall jack and an electrical outlet not controlled by a wall switch. The telephone base can be placed on a flat surface or vertically mounted on the wall (page 13). For optimum range and better reception, place the telephone base in a central and open location.

If you subscribe to high-speed Internet service (DSL- digital subscriber line) through your telephone line, you must install a DSL filter between the telephone line cord and the telephone wall jack (page 7). The filter prevents noise and caller ID problems caused by DSL interference. Please contact your DSL service provider for more information about DSL filters.

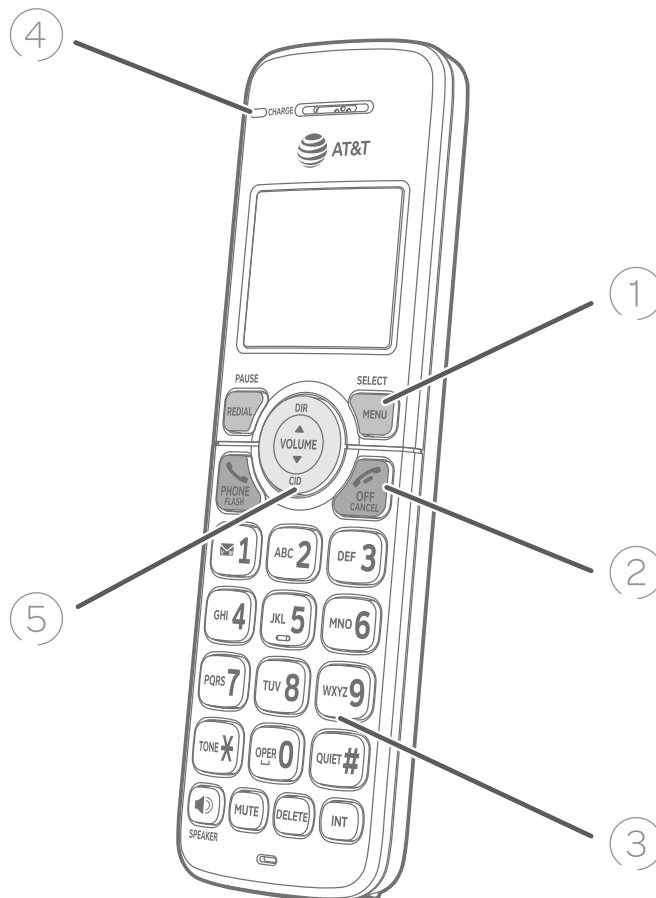
Your product may be shipped with a protective sticker covering the handset or telephone base display - remove it before use.

For customer service or product information, visit our website at <https://telephones.att.com> or call **1 (800) 222-3111**. In Canada, dial **1 (866) 288-4268**.

### **Avoid placing the telephone base and charger too close to:**

- ▶ Communication devices such as television sets, VCRs, or other cordless telephones.
- ▶ Excessive heat sources.
- ▶ Noise sources such as a window with traffic outside, motors, microwave ovens, refrigerators, or fluorescent lighting.
- ▶ Excessive dust sources such as a workshop or garage.
- ▶ Excessive moisture.
- ▶ Extremely low temperature.
- ▶ Mechanical vibration or shock such as on top of the washing machine or work bench.

## Quick reference guide - handset



### ① REDIAL/PAUSE

- ▶ Press repeatedly to view the last 10 numbers dialed.
- ▶ While entering numbers, press and hold to insert a dialing pause.

### MENU/SELECT

- ▶ Press to display the menu.
- ▶ Once in the menu, press to select an item or save an entry or setting.

### ② PHONE/FLASH

- ▶ Press to make or answer a call (page 22).
- ▶ During a call, press to answer an incoming call when you receive a call waiting alert (page 26).

### OFF/CANCEL

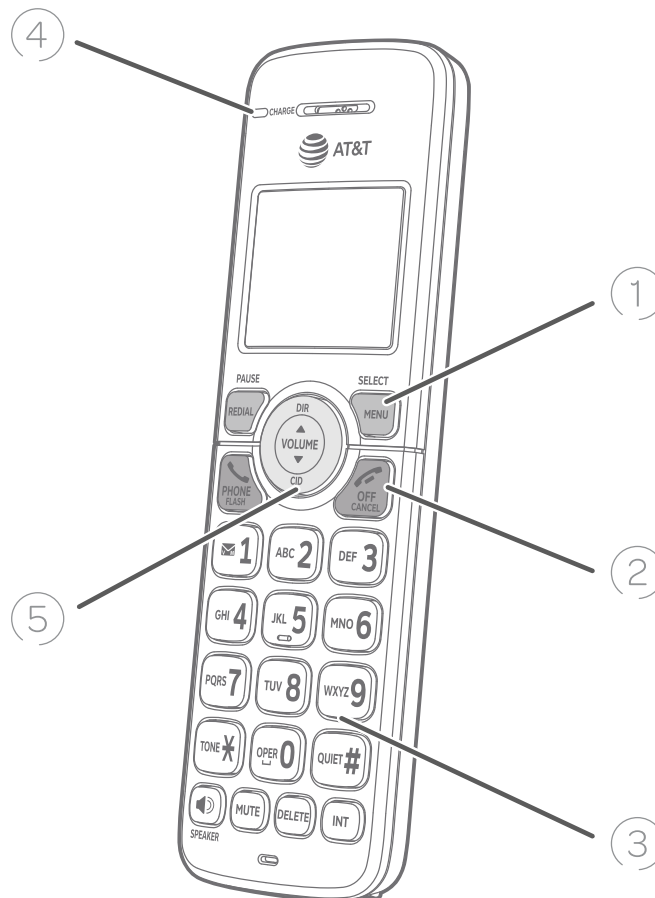
- ▶ During a call, press to hang up (page 23).
- ▶ While in a menu, press to cancel an operation, back up to the previous menu, or exit the menu display; or press and hold this button to exit to idle mode.
- ▶ Press and hold while the handset is not in use to erase the missed call indicator (page 43).

### ③ 1

- ▶ While reviewing a caller ID log entry, press repeatedly to add or remove 1 in front of the telephone number before dialing or saving it in the directory (page 44).
- ▶ Press and hold to set or dial your voicemail number (page 16).



## Quick reference guide - handset



### ③ TONE\*

- ▶ Press to switch to tone dialing temporarily during a call if you have pulse service (page 27).

### QUIET #

- ▶ Press and hold to set and turn on the **QUIET** mode, or turn it off (page 20).
- ▶ When reviewing a caller ID log entry, press repeatedly to view other dialing options (page 44).

### 🔊/SPEAKER

- ▶ Press to turn on the handset speakerphone, press again to resume normal handset use (page 23).

### MUTE

- ▶ When the telephone is ringing, press to mute the ringer temporarily.

- ▶ During a call, press to mute the microphone.

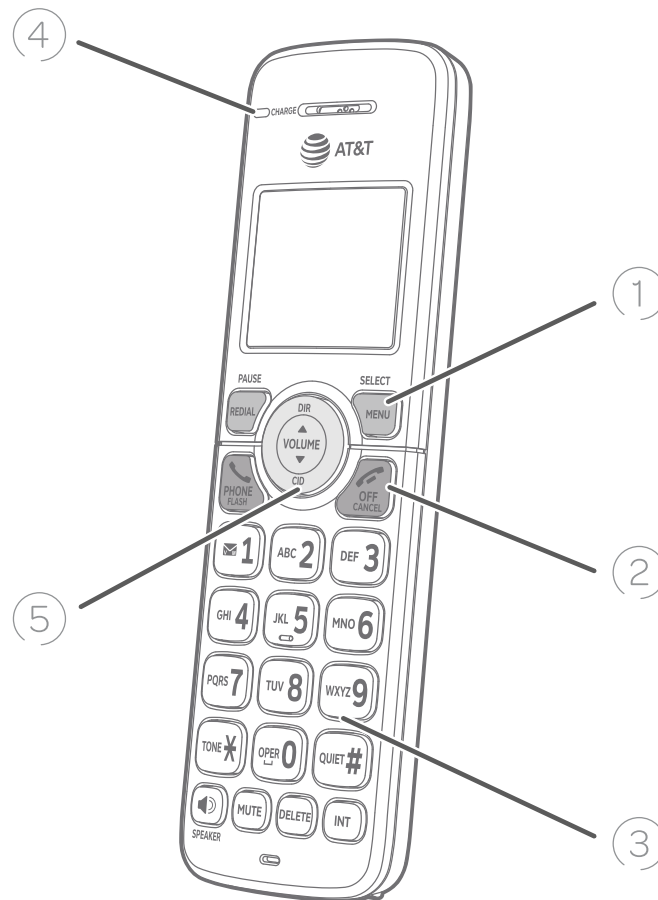
### DELETE

- ▶ While predialing, press to delete digits.
- ▶ While reviewing the redial list, directory, speed dial list or caller ID log, press to delete an individual entry.
- ▶ When entering names or numbers, press to delete a digit or character.
- ▶ When entering names or numbers, press and hold to erase all digits or characters.

### INT

- ▶ Press to initiate an intercom conversation or transfer a call (page 30).

## Quick reference guide - handset



---

### ④ CHARGE light

- ▶ On when the handset is charging in the telephone base or charger.

---

### ⑤ ▲DIR/VOLUME

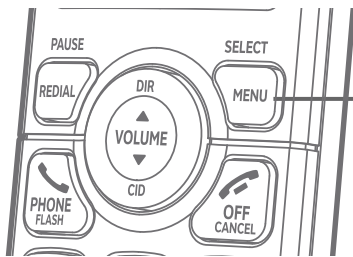
- ▶ Press to scroll up while in menus.
- ▶ Press to increase the listening volume when on a call, or increase the message playback volume.
- ▶ Press to show directory entries when the handset is not in use (page 37).
- ▶ While entering names or numbers in the directory, press to move the cursor to the right.

---

### ▼CID/VOLUME

- ▶ Press to scroll down while in menus.
- ▶ Press to decrease the listening volume when on a call, or to decrease the message playback volume.
- ▶ Press to show the caller ID log when the handset is not in use (page 43).
- ▶ While entering names or numbers in the directory, press to move the cursor to the left.

## Quick reference guide - handset



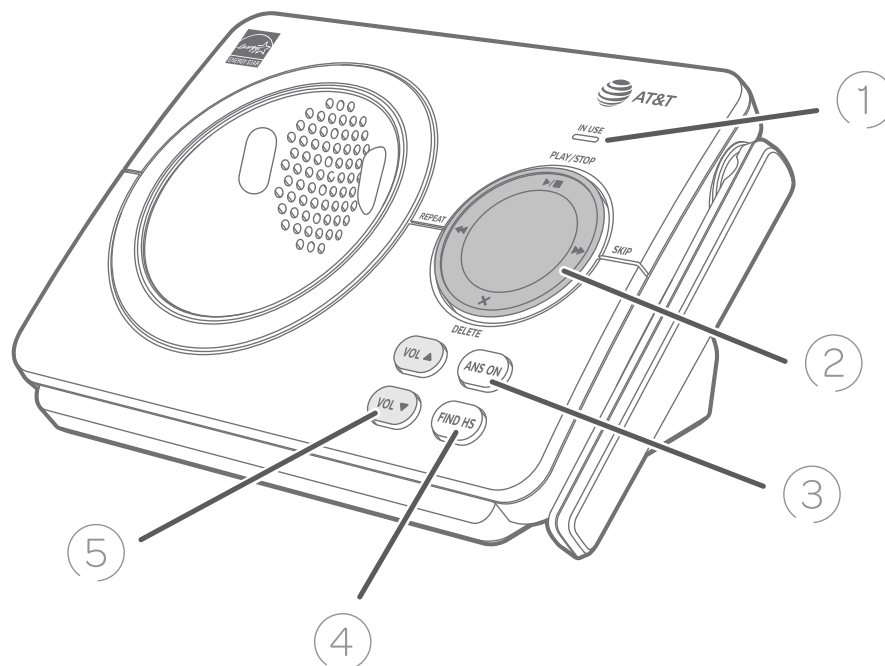
### MAIN MENU

- ▶ Play messages (page 65)
- ▶ Answering sys (page 53)
- ▶ Directory (page 33)
- ▶ Caller ID log (page 41)
- ▶ Call block (page 48)
- ▶ Ringers (page 15)
- ▶ Set date/time (page 18)
- ▶ Settings (page 15)

### Using menus

- ▶ Press **MENU/SELECT** to enter the main menu.
- ▶ Press **▼CID** or **▲DIR** to scroll through menu items.
- ▶ Press **MENU/SELECT** to select or save the indicated item.
- ▶ Press **OFF/CANCEL** to cancel an operation, back up to the previous menu or exit the menu display.

## Quick reference guide - telephone base



### ① **IN USE light**

- ▶ On when the handset is in use, or when the answering system is answering an incoming call.
- ▶ Flashes when another telephone is in use on the same line.

- ▶ During call screening, press to temporarily turn the call screening on or off.

### **Message window**

- ▶ Displays the number of messages or other answering system information.

### ② **◀REPEAT**

- ▶ Press to repeat a message.
- ▶ Press twice to play the previous message.

### **DELETEx**

- ▶ Press to delete the message currently playing.
- ▶ Press twice to delete all old messages when the telephone is not in use.

### **▶▶SKIP**

- ▶ Press to skip a message.

### **PLAY/STOP▶/■**

- ▶ Press to start or stop message playback.

### ③ **ANS ON**

- ▶ Press to turn the built-in answering system on or off (page 55).

### ④ **FIND HS**

- ▶ Press to page all handsets (page 29).

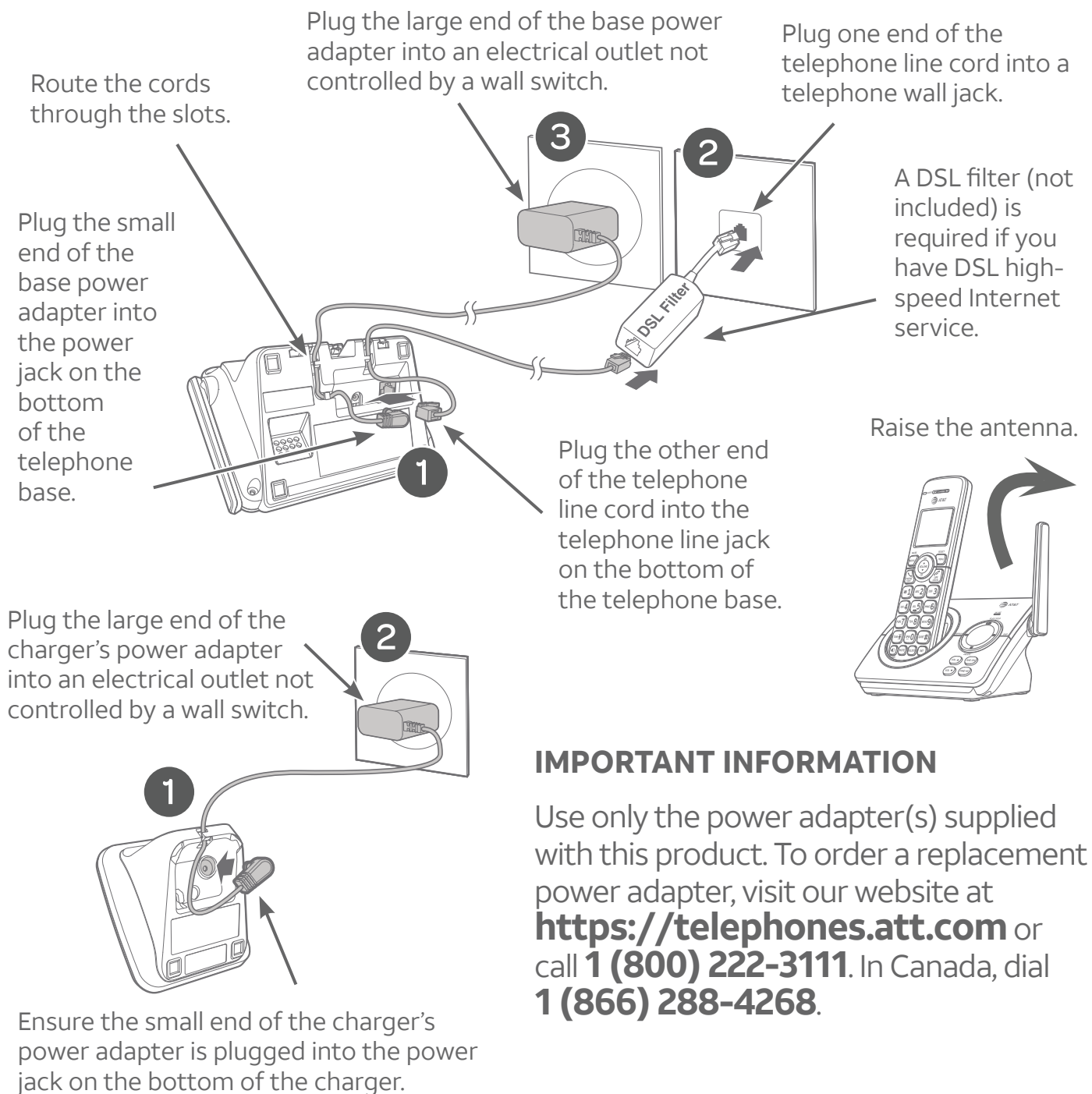
### ⑤ **VOL ▲ / VOL ▼**

- ▶ When the telephone is idle, press to adjust the telephone base ringer volume.
- ▶ During call screening or message playback, press to adjust the listening volume.

## Telephone base and charger installation

Install the telephone base and charger, as shown below. If you subscribe to high-speed Internet service (DSL - digital subscriber line) through your telephone line, you must install a DSL filter between the telephone line cord and the telephone wall jack. The filter prevents noise and caller ID problems caused by DSL interference. Please contact your DSL service provider for more information about DSL filters.

The telephone base is ready for tabletop use. If you want to mount your telephone on a wall, see **Wall-mount installation** on page 11 for details.



### IMPORTANT INFORMATION

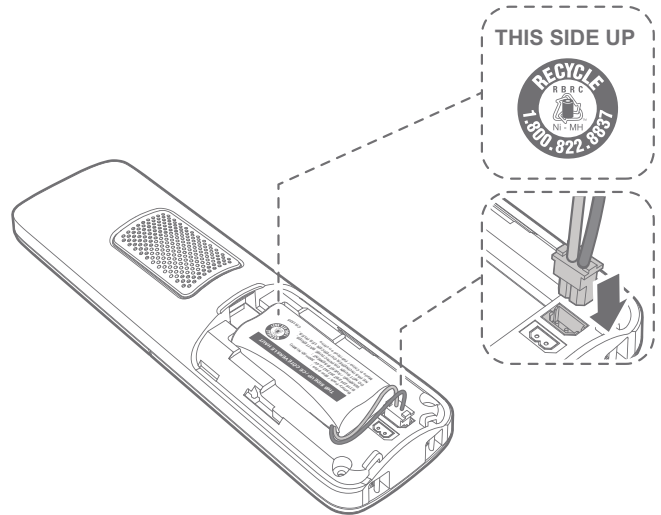
Use only the power adapter(s) supplied with this product. To order a replacement power adapter, visit our website at <https://telephones.att.com> or call **1 (800) 222-3111**. In Canada, dial **1 (866) 288-4268**.

## Battery installation and charging

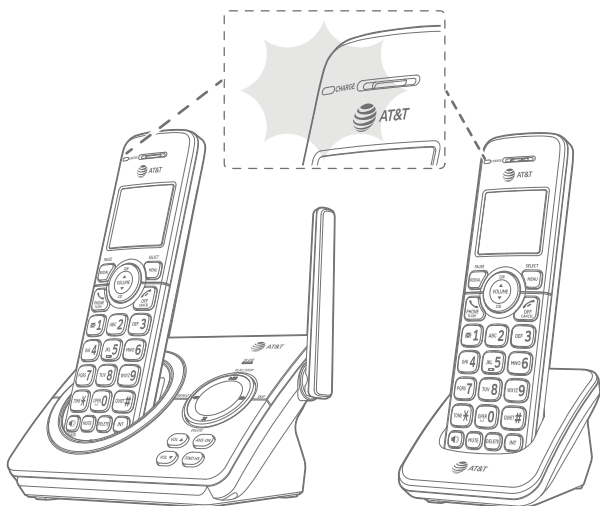
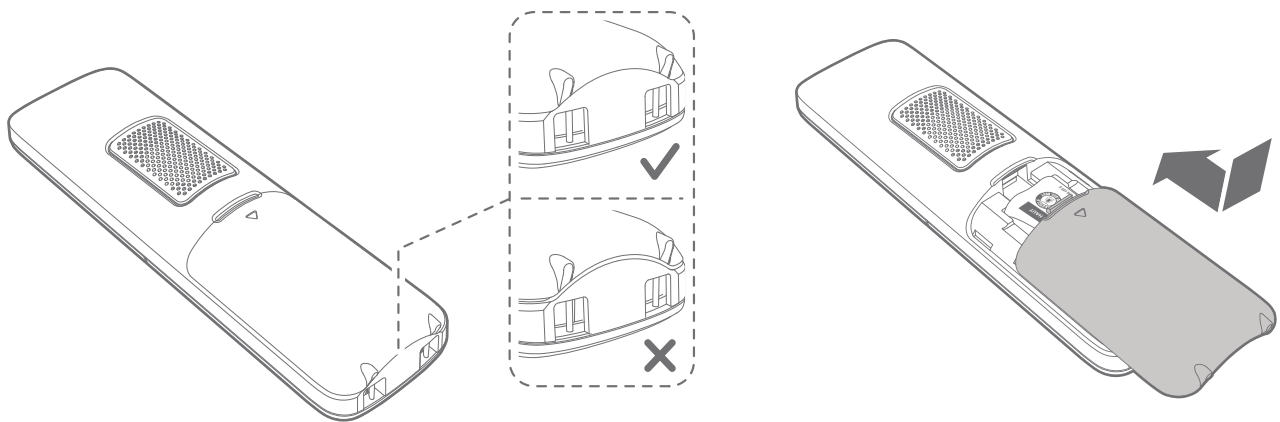
### Battery installation

Install the battery, as shown below.

1. Plug the battery connector securely into the socket inside the handset battery compartment.
2. Insert the supplied battery with the label **THIS SIDE UP** facing up, as indicated.



3. Align the cover flat against the battery compartment, then slide it upwards until it clicks into place.



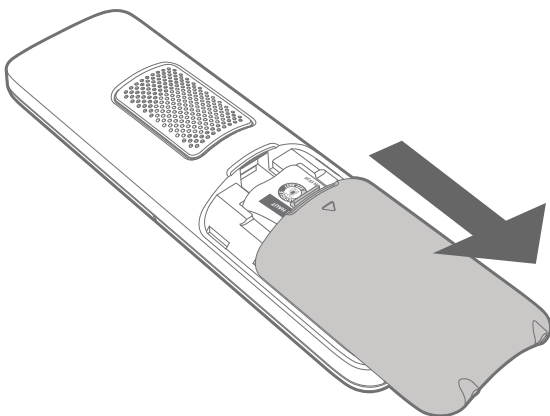
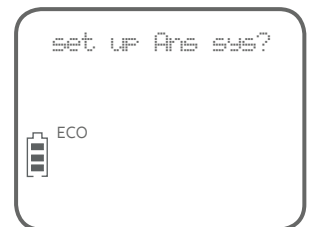
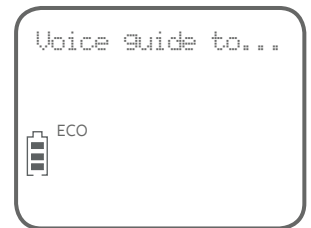
4. Charge the handset by placing it face up in the telephone base or charger. The **CHARGE** light is on when charging.

## Battery installation and charging

After you install your telephone or power returns following a power outage, the handset will prompt you to set the date and time (see page 18). To skip setting the date and time, press **OFF/CANCEL**.



After the date and time setting is done or skipped, the handset will prompt if you want to set up the answering system. Press **MENU/SELECT** to start the answering system setup via voice guide. For more details, see **Voice guide** on page 56. To skip the setup, press **OFF/CANCEL** on the handset.



To replace the battery, press the tab and slide the battery compartment cover downwards. Lift out the old battery and disconnect it from the handset. Follow the instructions to install and charge the new battery.

### IMPORTANT INFORMATION



- ▶ Use only the supplied rechargeable battery or replacement battery (model BT162342/BT262342). To order, visit our website at **<https://telephones.att.com>** or call **1 (800) 222-3111**. In Canada, dial **1 (866) 288-4268**.
- ▶ If you do not use the handset for a long time, disconnect and remove the battery to prevent possible leakage.

## Battery installation and charging

### Battery charging

Once you have installed the battery, the screen indicates the battery status (see the following table). If necessary, place the handset in the telephone base or charger to charge the battery. For best performance, keep the handset in the telephone base or charger when not in use. The battery is fully charged after 16 hours of continuous charging. See **Technical specifications** on page 98 for battery operating times.

If the screen is blank, you need to charge the handset without interruption for at least 30 minutes to give the handset enough charge to use the telephone for a short time. The screen shows **Low battery** until you have charged the battery without interruption for at least 30 minutes. The following table summarizes the battery charge indicators and actions to take.

Battery indicators	Battery status	Action
The screen is blank or shows <b>Put in charger</b> .	Battery has no or very little charge. The handset cannot be used.	Charge without interruption (at least 30 minutes).
The screen shows <b>Low battery</b> and  flashes.	Battery has enough charge to be used for a short time.	Charge without interruption (at least 30 minutes).
The screen shows <b>HANDSET X</b> and the battery icon shows  .	Battery is charged.	To keep the battery charged, place it in the telephone base or charger when not in use.



#### NOTES:

- ▶ If you are on a call in low battery mode, you hear four short beeps every 50 seconds.
- ▶ If no battery is installed in the handset when you place it in the telephone base or charger, the screen shows **No battery**. Follow the instructions in **Battery installation** on pages 8-10 to install the battery.



## Wall-mount installation

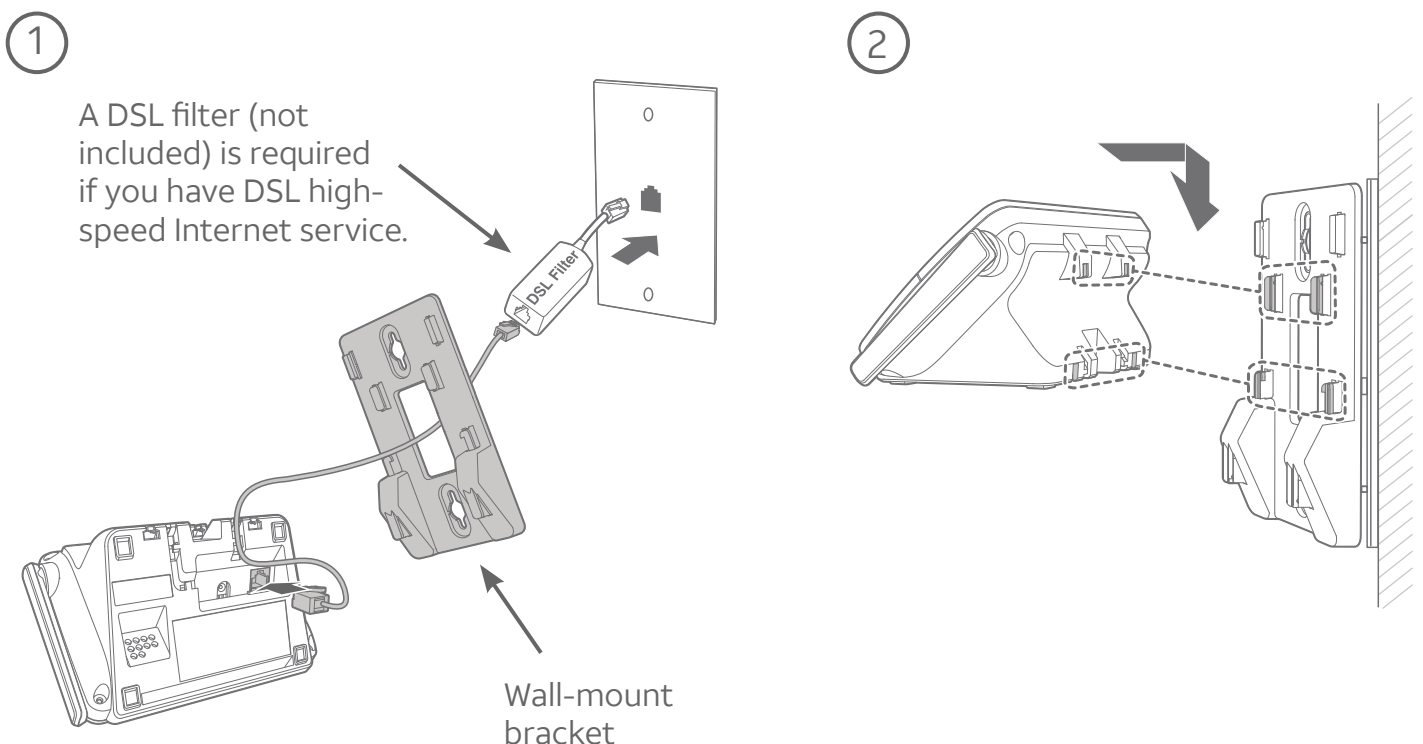
The telephone base comes ready for tabletop use. If you want to mount your telephone on a wall, use the provided wall-mount bracket to connect with a standard dual-stud telephone wall-mounting plate. If you do not have this mounting plate, you can purchase one from many hardware or consumer electronics retailers. Professional assistance may be required to install the mounting plate.

### Tabletop to wall-mount installation

---

To change the telephone base from the tabletop installation to wall-mount installation, make sure you first unplug the power adapter from the electrical outlet and the telephone line cord from the telephone wall jack.

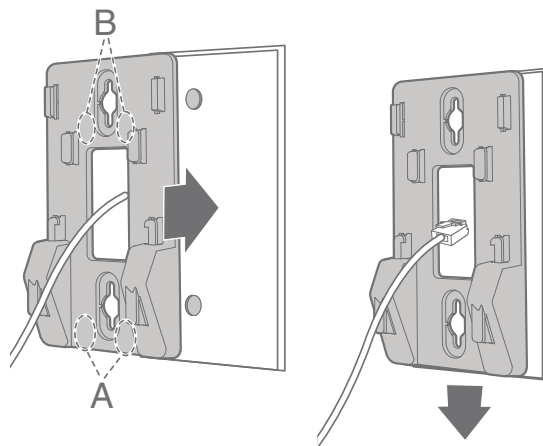
1. Plug the telephone line into the telephone base. If you are using a DSL filter, plug the other end of the telephone line into the filter. Route the telephone line cord (or DSL filter) through the wall-mount bracket hole.
2. Position the telephone base, as shown below. Insert the extended tabs of the wall-mount bracket into the slots on the back of the telephone base (see illustration 2). Push the telephone base down until it is securely in place.



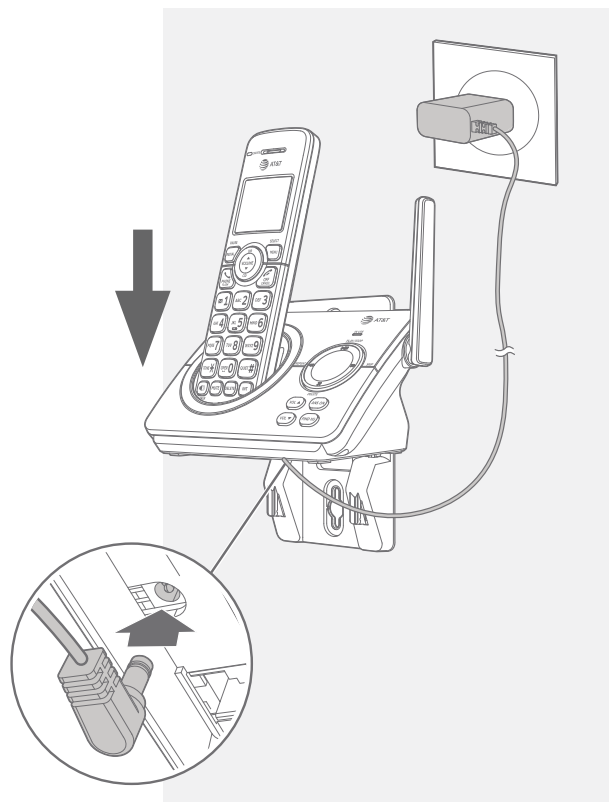
## Wall-mount installation

3. Plug the telephone line cord (or DSL filter) into the wall jack.
4. Align the holes on the wall-mount bracket with the standard wall plate and slide the wall-mount bracket down until it locks securely. Plug the power cord into the telephone base, and then plug the power adapter into a power outlet not controlled by a wall switch. Bundle the telephone line cord and power adapter cord neatly with twist ties.

3



4



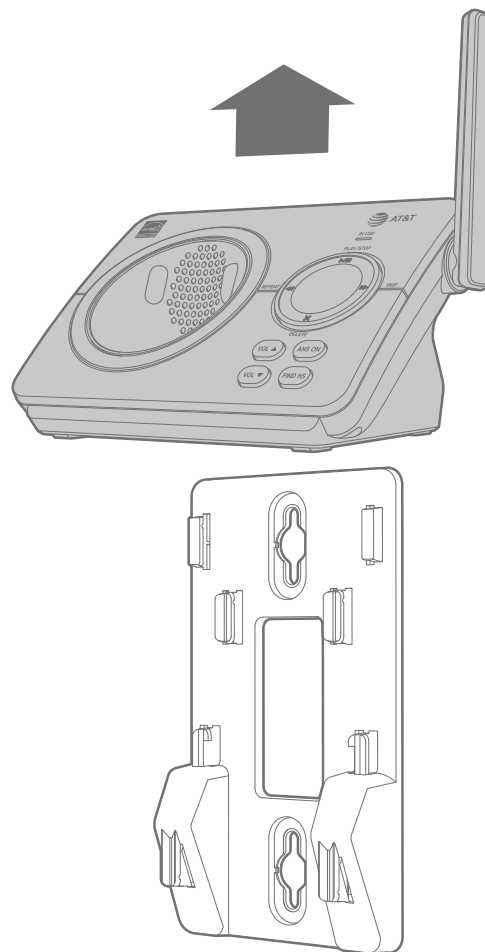
## Wall-mount installation

### Wall-mount to tabletop installation

---

To change the telephone base from wall-mount installation to tabletop installation, follow the steps mentioned below.

1. If the telephone line cord and power adapter cord are bundled, untie them first.
2. Push the telephone base up to detach it from the wall-mount bracket. Unplug the telephone line cord (or DSL filter) from the wall. Unplug the power adapter from the power outlet.
3. Push the wall-mount bracket up to remove it from the wall.
4. Refer to **Telephone base and charger installation** on page 7 to install the telephone base.



Telephone settings

## Menu overview

Use the menu to change the telephone settings.


1. Press **MENU/SELECT** in idle mode (when handset is not in use) to enter the main menu.
2. Press **▼CID** or **▲DIR** to scroll through menu items.
3. Press **MENU/SELECT** to select or save the indicated item.

**-OR-**

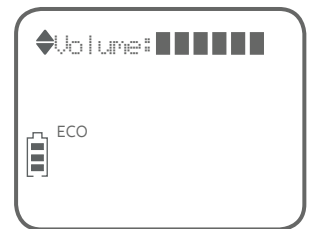
Press **⏪ OFF/CANCEL** to cancel an operation, back up to the previous menu or exit the menu display. Press and hold **⏪ OFF/CANCEL** to cancel an operation and return to idle mode.

## Handset settings


### Ringer volume

You can set the handset ringer volume level (1-6), or turn the ringer off. When the ringer is off,  appears on the handset screen.

1. Press **MENU/SELECT** when the handset is idle.
2. Press **▼CID** or **▲DIR** to scroll to **Ringers**, then press **MENU/SELECT**.
3. Press **MENU/SELECT** again to select **Ringer volume**.
4. Press **▼CID** or **▲DIR** to sample each volume level.
5. Press **MENU/SELECT** to save your preference.



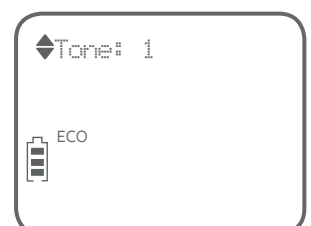
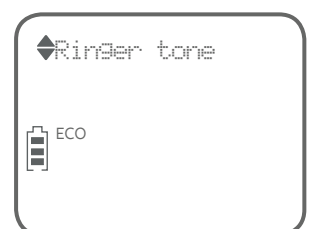
#### NOTES:

- ▶ Changing the handset ringer volume does not affect the base ringer volume. For more information on the base ringer volume, see **Telephone base ringer volume** on page 21.
- ▶ The handset ringer volume also determines the ringer volume of intercom calls.
- ▶ If the handset ringer volume is off, that handset ringer is silenced for all incoming calls. However, that handset still plays the paging tone when responding to the find handset feature (see **Find handset** on page 29).
- ▶ While the telephone is ringing, press  **OFF/CANCEL** or **MUTE** to silence the ringer temporarily on that handset only (see **Temporary ringer silencing** on page 22).

### Ringer tone

You can choose one of 10 ringer tones for the handset.

1. Press **MENU/SELECT** when the handset is idle.
2. Press **▼CID** or **▲DIR** to scroll to **Ringers**, then press **MENU/SELECT**.
3. Press **▼CID** or **▲DIR** to scroll to **Ringer tone**, then press **MENU/SELECT**.
4. Press **▼CID** or **▲DIR** to sample each tone.
5. Press **MENU/SELECT** to save your preference.



**NOTE:** if you turn off the handset ringer volume, you will not hear ringer tone samples.

## Handset settings


### LCD language

---

You can select the language used for all screen displays.



1. Press **MENU/SELECT** when the handset is idle.
2. Press **▼CID** or **▲DIR** to scroll to **Settings**, then press **MENU/SELECT**.
3. Press **MENU/SELECT** again to select **LCD language**.
4. Press **▼CID** or **▲DIR** to select **English, Français** or **Español**.
5. Press **MENU/SELECT** to save your preference.



 **NOTE:** If you accidentally change the LCD language to French or Spanish, you can reset it back to English without going through the French or Spanish menus. Press **MENU/SELECT** in idle mode, then enter **\*364#** using the dialing keys. You hear a confirmation tone.

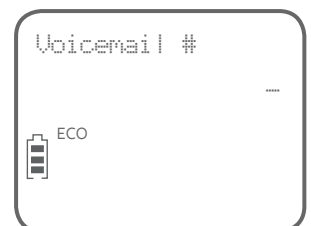
### Set speed dial voicemail number

---

If you subscribe to a voicemail service offered by your telephone service provider, you can save the voicemail number to 1 on each handset for easy access. When you want to retrieve voicemail messages, press and hold 1. Contact your telephone service provider for more information and assistance about your voicemail service.


#### To set your voicemail number:

1. Press **MENU/SELECT** when the handset is idle.
2. Press **▼CID** or **▲DIR** to scroll to **Settings**, then press **MENU/SELECT**.
3. Press **▼CID** or **▲DIR** to scroll to **Voicemail #**, then press **MENU/SELECT**.
4. Use the dialing keys to enter the voicemail number (up to 30 digits).
5. Press **MENU/SELECT** to save. You hear a confirmation tone.



#### -OR-


If it is your first time to set the voicemail number:

1. Press and hold 1 in idle mode.
2. Use the dialing keys to enter the voicemail number (up to 30 digits).
3. Press **MENU/SELECT** to save. The handset dials the saved voicemail number.

## Handset settings

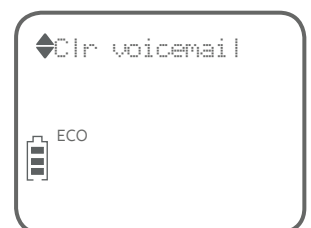
### Clear voicemail indication


---

Use this feature when the telephone indicates there is a new voicemail message but there is none. This may occur, for example, when you have accessed your voicemail while away from home. This feature only turns off the displayed **New voicemail** message and  icon; it does not delete your voicemail messages. As long as you have new voicemail messages, your telephone service provider continues to send the signal to turn on the indicators.

#### To manually turn off the new voicemail indicators:

1. Press **MENU/SELECT** when the handset is idle.
2. Press **▼CID** or **▲DIR** to scroll to **Settings**, then press **MENU/SELECT**.
3. Press **▼CID** or **▲DIR** to scroll to **Clr voicemail**.
4. Press **MENU/SELECT** to turn the voicemail indication off.



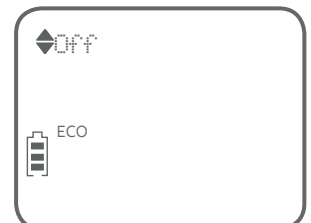
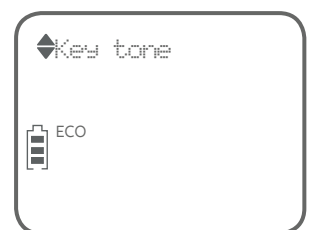
 **NOTE:** For more information about using your voicemail service, contact your telephone service provider for assistance.

### Key tone

---

The handset is programmed to beep with each key press. You can turn the key tone off, so there are no beeps when you press keys.

1. Press **MENU/SELECT** when the handset is idle.
2. Press **▼CID** or **▲DIR** to scroll to **Settings**, then press **MENU/SELECT**.
3. Press **▼CID** or **▲DIR** to scroll to **Key tone**, then press **MENU/SELECT**.
4. Press **▼CID** or **▲DIR** to select **On** or **Off**.
5. Press **MENU/SELECT** to save your preference.



## Handset settings

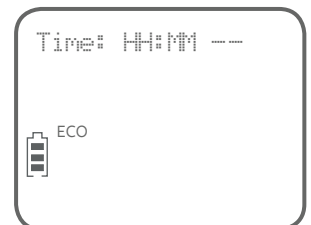
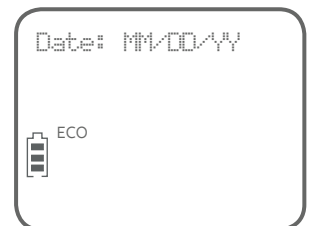
### Set date/time


---

The answering system announces the day of the week and time of each message received prior to playing it. If you subscribe to caller ID service, the day, month and time are set automatically with each incoming call (see **About caller ID** on page 41). However, the year must be set so that the day of the week can be calculated from the caller ID information.

Follow the steps, as mentioned below, to set the month, date, year and time.

1. Press **MENU/SELECT** when the handset is idle.
2. Press **▼CID** or **▲DIR** to scroll to **Set date/time**, and then press **MENU/SELECT**.
3. Press **▼CID** or **▲DIR** to select the month, then press **MENU/SELECT**, or enter the 2-digit number (**01-12**) using the dialing keys (**0-9**).
4. Press **▼CID** or **▲DIR** to select the day, then press **MENU/SELECT**, or enter the 2-digit number (**01-31**) using the dialing keys (**0-9**).
5. Press **▼CID** or **▲DIR** to select the year, or enter the 2-digit number (**00-99**) using the dialing keys (**0-9**), then press **MENU/SELECT**.
6. Press **▼CID** or **▲DIR** to select the hour, then press **MENU/SELECT**, or enter the 2-digit number (**00-23**) using the dialing keys (**0-9**).
7. Press **▼CID** or **▲DIR** to select the minute, then press **MENU/SELECT**, or enter the 2-digit number (**00-59**) using the dialing keys (**0-9**).
8. Press **▼CID** or **▲DIR** to choose **AM** or **PM**. Press **MENU/SELECT** to save.



 **NOTE:** If the date and time is not set when the message is recorded, the system announces “Time and date not set” before it plays the message.



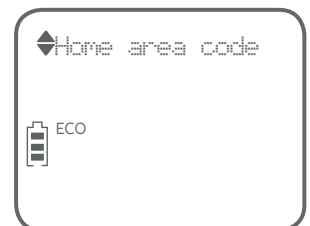
## Handset settings

### Home area code

If you dial 7 digits to make a local call (no area code required), enter your area code into the telephone as home area code. When you receive a call from within your home area code, the caller ID log only displays the 7 digits of the telephone number.

This feature makes it easy for you to make a call from the caller ID log. If you dial 10 digits to make a local call, do not use this home area code feature. If you do, you will not be able to place calls from your caller ID log because they have only 7 digits.

1. Press **MENU/SELECT** when the handset is idle.
2. Press **▼CID** or **▲DIR** to scroll to **Settings**, then press **MENU/SELECT**.
3. Press **▼CID** or **▲DIR** to scroll to **Home area code**, then press **MENU/SELECT**.
4. Use the dialing keys to enter your 3-digit area code. Press **DELETE** to erase digits while editing.
5. Press **MENU/SELECT** to save the setting.

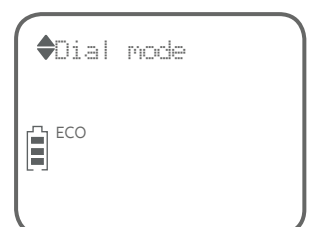


**NOTE:** If, in the future, your telephone service provider requires you to dial 10 digits to make a local call (area code + telephone number), you need to delete your home area code. While the home area code is displaying in Step 4, press and hold DELETE. The home area code is now restored to its default setting of **\_ \_ \_**(empty). Press **MENU/SELECT** to save.

### Dial mode

The dial mode is preset to tone dialing. If you have pulse (rotary) service, you must change the dial mode to pulse dialing before using the telephone.

1. Press **MENU/SELECT** when the handset is idle.
2. Press **▼CID** or **▲DIR** to scroll to **Settings**, then press **MENU/SELECT**.
3. Press **▼CID** or **▲DIR** to scroll to **Dial mode**, then press **MENU/SELECT**.
4. Press **▼CID** or **▲DIR** to choose between **Touch-tone** and **Pulse**.
5. Press **MENU/SELECT** to save the setting.



**NOTE:** If you have dial pulse (rotary) dialing service only, refer to **Temporary tone dialing** on page 27 to temporarily switch from pulse to touch-tone dialing during a call.

## Handset settings

### QUIET mode

---

When **QUIET** mode is turned on, the telephone silences all sounds during the set period of time (1-12 hours). However, the find handset paging tone and any sound-generating operations initiated by users, such as making calls using the speakerphone or setting ringer volume, will sound as normal. After you turn on **QUIET** mode, this feature activates immediately and the answering system turns on automatically. When **QUIET** mode is on, the answering system takes calls and records messages without broadcasting them.

#### To turn QUIET mode on:

1. Press and hold QUIET # in idle mode to enter the **QUIET** mode setting screen. The screen shows **Quiet: \_\_ hours [1-12]**.
2. Use the dialing keys to enter the desired number of hours (1-12) you would like to turn on **QUIET** mode, then press **MENU/SELECT**. Your screen shows **Quiet mode on**.

#### To turn QUIET mode off:

- ▶ While **QUIET** mode is on, press and hold QUIET #. The screen shows **Quiet mode off** briefly and then returns to idle.



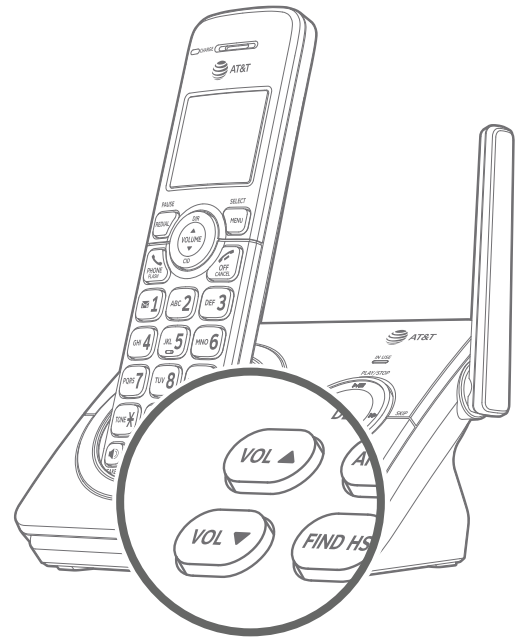
#### NOTES:

- ▶ If you change the base ringer, handset ringer, ringer volume, or key tone when **QUIET** mode is on, the sample plays but the feature is still muted after saving the setting.
- ▶ After **QUIET** mode is turned off or the set period of time has expired, all muted features will be activated again.
- ▶ When **QUIET** mode is on, the handset does not ring when there is an incoming intercom call, but the handset which initiates the intercom call does have the calling tone as normal.

## Telephone base ringer volume

When the telephone base is idle, press **VOL ▲** or **VOL ▼** on the telephone base to set the ringer volume level (1-6), or turn the ringer off. A sample of the ringer sounds as you adjust the volume. The telephone base announces, “*Base ringer is off*” when you set the volume to 0.

 **NOTE:** If a handset is on an outside call, the telephone base volume cannot be changed.



## Making, answering and ending calls

### Making a call

---

#### To make a call:

- ▶ Press **PHONE/FLASH** or **SPEAKER**, then enter the telephone number.

The screen displays the elapsed time as you talk (in hours, minutes and seconds).

#### On-hook dialing (predialing):

1. Use the dialing keys to enter the telephone number (up to 30 digits).
  - ▶ Press and hold **REDIAL/PAUSE** to insert a 3-second dialing pause (a **P** appears).
  - ▶ Press **DELETE** or **OFF/CANCEL** to erase digits.
  - ▶ Press and hold **DELETE** or **OFF/CANCEL** to return to idle mode.
2. Press **PHONE/FLASH** or **SPEAKER** to call.



#### NOTES:

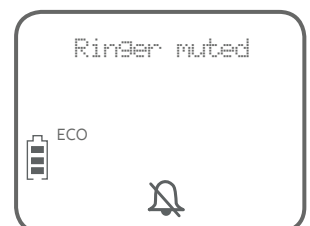
- ▶ Pressing **PHONE/FLASH** to access services from your telephone service provider does not affect the elapsed time.
- ▶ When a handset is on a call and another handset attempts to access the directory or caller ID log, the screen of the other handset shows not available.

### Temporary ringer silencing

---

#### To silence the ringer temporarily on that handset only:

- ▶ While the telephone is ringing, press **OFF/CANCEL** or **MUTE**.



#### To silence the ringer temporarily on the telephone base:

- ▶ While the telephone is ringing, press **VOL ▼** on the telephone base.

This turns off the ringer without disconnecting the call. The next incoming call rings normally at the preset volume.



**NOTE:** Unless the ringer volume is turned off on that handset, each handset rings when there is an incoming call.

## Making, answering and ending calls

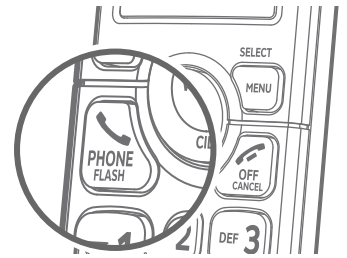
### Answering a call

---

Press any dialing key (**0-9**, **\*** or **#**) or  **PHONE/FLASH**.

**-OR-**

Press  **SPEAKER** to answer using the speakerphone.



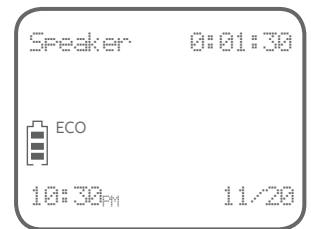
### Handset speakerphone

---

During a call, press  **SPEAKER** to switch between speakerphone and normal handset use.



**NOTE:** After installing the battery in the handset, the screen may show **Low battery**. If you use the speakerphone at this time, the battery may become depleted. Charge the handset without interruption for at least 30 minutes (page 10).



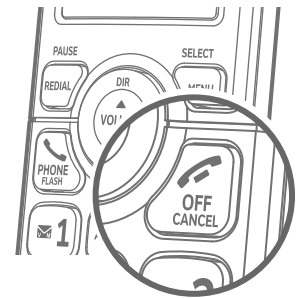
### Ending a call

---

Press  **OFF/CANCEL**.

**-OR-**

Put the handset in the telephone base or charger to end the call.



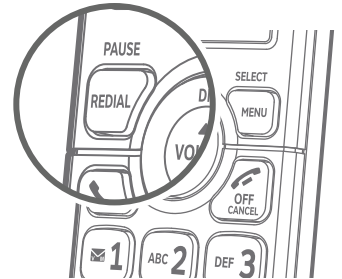
## Redial

Each handset stores the 10 most recently called numbers in the redial list.

### View numbers in the redial list

---

1. Press **REDIAL/PAUSE** when the handset is idle.
2. Press **▲DIR**, **▼CID** or **REDIAL/PAUSE** repeatedly to scroll through the 10 most recently called numbers (up to 30 digits each). The handset beeps twice at the beginning or end of the list.
3. Press **OFF/CANCEL** to exit the redial list.



### Call a number from the redial list

---

1. Press **REDIAL/PAUSE** when the handset is idle.
2. Press **▲DIR**, **▼CID** or **REDIAL/PAUSE** repeatedly to scroll through the 10 most recently called numbers (up to 30 digits each). The handset beeps twice at the beginning or end of the list.
3. When the number you want to call is displayed, press **PHONE/FLASH** or **SPEAKER** to dial.



**-OR-**

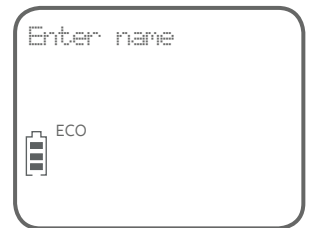
1. Press **PHONE/FLASH** or **SPEAKER**.
2. Press **REDIAL/PAUSE**, then press **▲DIR**, **▼CID** or **REDIAL/PAUSE** repeatedly until the number you want to call is displayed.
3. Press **MENU/SELECT**. The handset dials the desired number.

## Redial

### Copy a number from the redial list to the directory

---

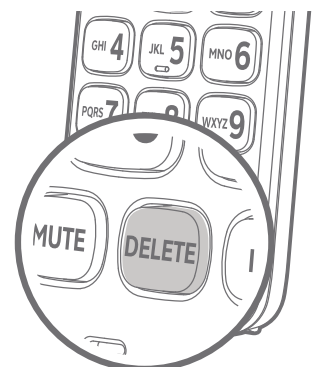
1. Press **REDIAL/PAUSE** when the handset is idle.
2. Press **▼CID** or **▲DIR** to scroll to the number you want to save into the directory. Press **MENU/SELECT** twice. The screen shows **Enter number**. Edit the number, if necessary.
  - ▶ Press **▼CID** or **▲DIR** to move the cursor to the left or right.
  - ▶ Press and hold **REDIAL/PAUSE** to enter a 3-second dialing pause (a **P** appears).
  - ▶ Press **DELETE** to erase a digit.
  - ▶ Press and hold **DELETE** to erase all digits.
3. Press **MENU/SELECT** again to save the number and move to enter a name. The screen shows **Enter name**.
  - ▶ Use the dialing keys (**0-9**) to edit the name.
  - ▶ Press **0** to add a space.
  - ▶ Press **DELETE** to erase a character.
  - ▶ Press and hold **DELETE** to erase all characters.
4. Press **MENU/SELECT** to store your new directory entry. You hear a confirmation tone.



### Delete a number in the redial list

---

While reviewing a number in the redial list, press **DELETE** to delete the displayed number from the redial list.




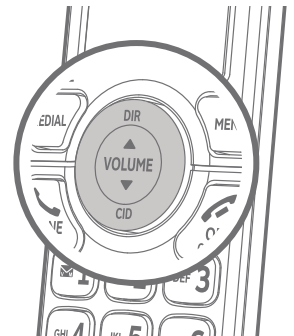
## Options while on calls

### Volume control

---

While on a call, press ▲ **DIR/VOLUME** to increase or ▼ **CID/VOLUME** to decrease the listening volume. When the volume reaches the minimum or maximum setting, you hear two beeps.

 **NOTE:** The handset volume setting and speakerphone volume setting are independent.



### Mute

---

Use the mute function to turn off the microphone while on a call. You can hear the caller, but the caller cannot hear you.

#### To turn mute on:

- ▶ Press **MUTE**. When mute is on, the handset screen shows **Muted** until the mute function is turned off.

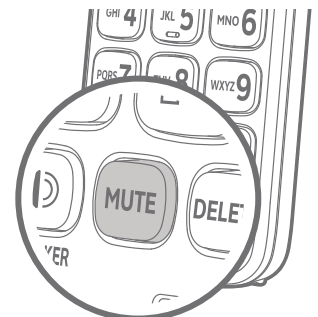


#### To turn mute off:

- ▶ Press **MUTE** and then resume speaking. When mute is off, **Microphone on** appears temporarily on the handset screen.

**-OR-**



Mute is automatically turned off when you end the call.

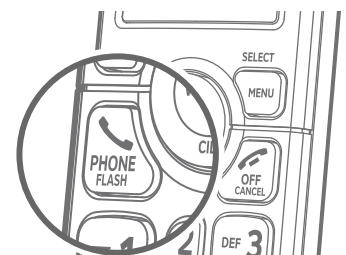



### Flash/call waiting

---

If you subscribe to call waiting service provided by your telephone service provider, and someone calls while you are already on a call, you hear two beeps.

- ▶ Press  **PHONE/FLASH** to put your current call on hold and take the new call.
- ▶ Press  **PHONE/FLASH** anytime to switch back and forth between calls.



 **NOTE:** For more information on caller ID with call waiting, refer to **About caller ID** on page 41.



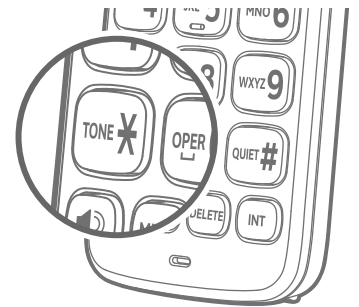
## Options while on calls

### Temporary tone dialing

---

If you have dial-pulse (rotary) dialing service only, you can temporarily switch from pulse-tone dialing to touch-tone dialing during a call.

1. During a call, press **TONEX**.
2. Use the dialing keys to enter the desired number. The telephone sends touch-tone signals.
3. The telephone automatically returns to pulse dial mode after you end the call.



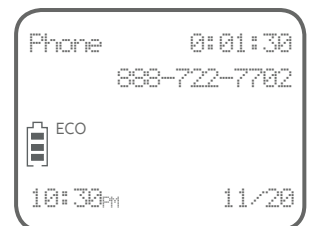
### Chain dialing

---

While on a call, you can initiate a dialing sequence from numbers stored in the directory, caller ID log or redial list. Doing this can be useful if you need to access numbers other than telephone numbers (such as account numbers or access codes).

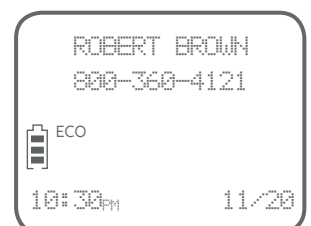
#### To access the directory while on a call:

1. Press **MENU/SELECT**.
2. Press **MENU/SELECT** again to choose **Directory**.
3. Press **▼CID** or **▲DIR** to scroll or use the dialing keys (**0-9**) to find the desired entry (see **Search by name** on page 38).
4. Press **MENU/SELECT**. The telephone automatically dials the displayed number.



#### To access the caller ID log while on a call:

1. Press **MENU/SELECT**.
2. Press **▼CID** or **▲DIR** to scroll to **Caller ID log**, then press **MENU/SELECT**.
3. Press **▼CID** or **▲DIR** to scroll to the desired entry. Press **#** (pound key) to view other dialing options, if necessary. See **View dialing options** on page 43 for more details.
4. Press **MENU/SELECT**. The telephone automatically dials the displayed number.



## Options while on calls

### To access the redial list while on a call:

1. Press **REDIAL/PAUSE**. The screen shows the number most recently called. To view up to 10 recently called numbers, press **▲DIR**, **▼CID** or **REDIAL/PAUSE** repeatedly to scroll to the desired number.
2. Press **MENU/SELECT**. The telephone dials the displayed number.



#### NOTES:

- ▶ While on a call, you cannot edit a directory entry or redial entry, or copy a caller ID entry into the directory.
- ▶ If the directory, caller ID log or answering system is being used and you attempt to access one of them, the screen shows **Not available**.
- ▶ Press **OFF/CANCEL** to exit directory, caller ID log or redial list and return to the call without dialing the displayed number.

### Join a call in progress

---

#### If a handset is already on a call and you would like to join the call:

Press **PHONE/FLASH** or **SPEAKER** on another system handset.

#### To end the call:

Press **OFF/CANCEL** or place the handset in the telephone base or charger.

The call does not end until all handsets hang up.



#### NOTES:

- ▶ If you have registered a cordless headset or cordless speakerphone to the telephone base, you can also join a call in progress using the registered device. Refer to the user's manuals of your cordless headset or speakerphone for more information.
- ▶ You can use a maximum of four devices at the same time on an outside call. If you have five handsets and the fifth handset attempts to join the call, the handset screen shows **Unable to call**.

## Find handset

You can use the find handset feature to find misplaced handsets.

### To start the paging tone:

- ▶ Press **FIND HS** on the telephone base to start the paging tone on all handsets for 60 seconds.

### To stop the paging tone:

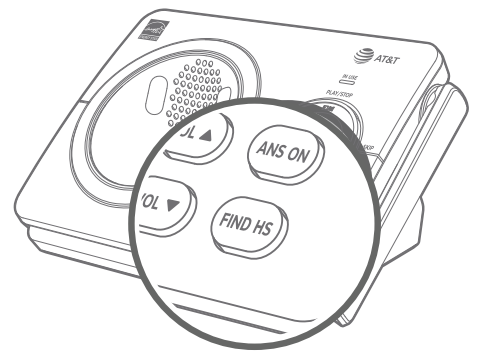
- ▶ Press **PHONE/FLASH**, **SPEAKER**, **OFF/CANCEL** or any dialing key (**0-9**, **\*** or **#**) on the handset(s).

**-OR-**

- ▶ Press **FIND HS** on the telephone base.

**-OR-**

- ▶ Place the handset in the telephone base or charger.



### NOTES:

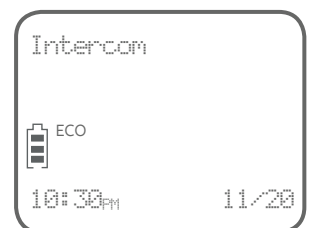
- ▶ If you press **MUTE** on a handset, the ringer of that handset is silenced but the paging tone continues on the other handsets.
- ▶ If a handset is accessing the answering system, on a call (intercom call or outside call), or out of range, that handset does not beep when paged.
- ▶ You cannot use the find handset feature while the telephone base is playing messages or the answering system is being accessed remotely.

## Intercom

### Make and answer an intercom call

Use the intercom feature for conversations between two handsets, or a handset and a cordless headset/speakerphone (sold separately). You can buy additional expansion handsets (AT&T model EL50019), cordless headsets and speakerphones (AT&T model TL80133) for this telephone base to expand your telephone system (up to five handsets, cordless headsets or speakerphones).

- Press **INT** on your handset in idle mode.
  - If you have two handsets and no other registered devices, your originating handset screen shows **Calling HS X**. The other handset rings and its screen shows **HS X is calling**.
  - If you have more than two handsets and/or cordless headset(s)/speakerphone(s), your originating handset screen shows **Intercom to:**. Use the dialing keys to select the destination device (**1-5**; depends on your registration sequence). The originating handset screen shows **Calling HS X** (**X** represents the device number). The destination device rings. If it is a handset, its screen shows **HS X is calling**.
- To answer the intercom call, press any dialing key (**0-9**, **\*** or **#**), **PHONE/FLASH**, **▶/SPEAKER** or **INT** on the other handset. Both handset screens now show **Intercom**.
- To end an intercom call, press **OFF/CANCEL** or place the handset back in the telephone base or charger.



#### NOTES:

- Before the intercom call is answered, you can cancel it by pressing **OFF/CANCEL** or **INT** on your originating handset.
- If the other handset is not answered within 100 seconds, or if the handset is in use, on a call, or out of range, your originating handset shows **Unable to call**.
- If you have four handsets, of which two handsets are on an intercom call, the other two handsets can be used on an outside call (see **Join a call in progress** on page 28) or a separate intercom call.
- You can only use one pair of devices at a time to make intercom calls.
- For cordless headsets and speakerphones, refer to the corresponding user's manual on how to answer and end an intercom call.

## Intercom

### **Answer an incoming call during an intercom call**


---

If you receive an incoming outside call during an intercom call, there is an alert tone.

#### **To answer the incoming outside call:**

- ▶ Press  **PHONE/FLASH**. The intercom call ends automatically.

#### **To end the intercom call without answering the incoming outside call:**

- ▶ Press  **OFF/CANCEL**. The intercom call ends and the handsets ring for the incoming call.

#### **To let the answering system answer the incoming outside call:**

- ▶ Continue with the intercom call. If the answering system is on, it answers the incoming call after the number of rings you have set.

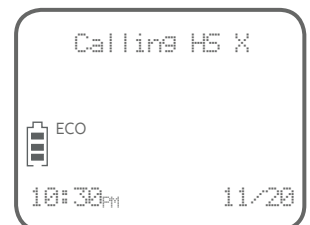
## Call transfer using intercom

Use the intercom feature to transfer an outside call to another system handset.

1. During a call, press **INT**.

- ▶ If you have two handsets and no other registered devices, the outside call is put on hold and your originating handset screen shows **Calling HS X**. The other handset rings and its screen shows **HS X is calling**.
- ▶ If you have more than two handsets and/or cordless headset(s)/speakerphone(s), your originating handset screen shows **Intercom to:**. Use the dialing keys to select the destination device (**1-5**; depends on your registration sequence). The originating handset screen shows **Calling HS X** (**X** represents the device number). The destination device rings. If it is a handset, its screen shows **HS X is calling**.

2. To answer the intercom call on the other handset, press any dialing key (**0-9, \*** or **#**), **PHONE/FLASH**, **SPEAKER** or **INT**. The outside call is still on hold and both handset screens now show **Intercom**. You can now have a private conversation between system handsets.



### NOTES:

- ▶ To cancel the intercom call and return to the external call before the intercom call is answered, press **OFF/CANCEL** or **INT** on your originating handset.
- ▶ If the called party does not answer within 100 seconds, or if the device is in use, on a call, or out of range, the calling handset shows **Unable to call** on its screen and automatically returns to the outside call.

3. From the intercom call, you have the following options:

- ▶ You can let the other device join you on the outside call in a three-way conversation. Press and hold **INT** on the originating handset.
- ▶ You can transfer the call. Press **OFF/CANCEL**, or place your handset back in the telephone base or charger. The other handset automatically connects to the outside call.
- ▶ You can switch between the outside call (**Outside call** appears on the screen) and the intercom call (**Intercom** appears on the screen). Press **INT** on the originating handset to switch.
- ▶ The called party can end the intercom call by **OFF/CANCEL** or placing the other handset back in the telephone base or charger. The outside call continues with the originating handset.

## Directory overview

### Shared directory

---

The directory is stored in the telephone base, and is shared by all handsets. Changes made to the directory on any one handset apply to all.



**NOTE:** Only one handset can review the directory at one time. If another handset attempts to enter the directory, the screen shows **Not available**.



### Directory memory capacity

---



The directory can store up to 50 entries, with a maximum of 15 alphanumeric characters (including spaces) for the names and 30 digits for the telephone numbers.

If there are already 50 entries, you cannot store a new number until you delete one.

If the directory is empty, when you access it, the screen shows **List empty**.

### Exiting the directory

---

Press  **OFF/CANCEL** to cancel an operation, back up to the previous menu, or exit the menu display. Press and hold  **OFF/CANCEL** to return to idle mode.

## Create directory entries

### Create a new directory entry

---

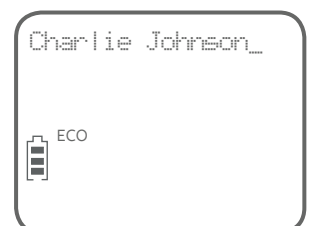
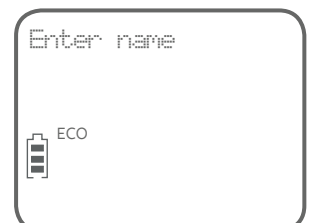
1. Press **MENU/SELECT** in idle mode.
2. Press **▼CID** or **▲DIR** to scroll to **Directory**, then press **MENU/SELECT**.
3. Press **MENU/SELECT** again to choose **Add new entry**.
4. When the screen shows **Enter number**, use the dialing keys to enter a number (up to 30 digits).

- ▶ Press **▼CID** or **▲DIR** to move the cursor to the left or right.
- ▶ Press and hold **REDIAL/PAUSE** to enter a 3-second dialing pause (a **P** appears).
- ▶ Press **DELETE** to erase a digit.
- ▶ Press and hold **DELETE** to erase all digits.

**-OR-**

Copy a number from the redial list by pressing **REDIAL/PAUSE** and then **▼CID** or **▲DIR**, or pressing **REDIAL/PAUSE** repeatedly to locate the desired number. Press **MENU/SELECT** to copy the number.

5. Press **MENU/SELECT** to save the number in the display.
6. The screen shows **Enter name**. Use the dialing keys and refer to **Character chart** on page 34 to enter a name (up to 15 characters). Each time you press a key, the character on that key appears. Additional key presses produce other characters on that key.
  - ▶ Press **0** to add a space.
  - ▶ Press **▼CID** or **▲DIR** to move the cursor to the left or right.
  - ▶ Press **DELETE** to erase a character.
  - ▶ Press and hold **DELETE** to erase all characters.





## Create directory entries

### Character chart:

Dialing key	Characters by number of key press										
	1	2	3	4	5	6	7	8	9	10	11
<b>1</b>	1	.	-	'	(	)	*	#	&	/	,
<b>2</b>	a	b	c	A	B	C	2				
<b>3</b>	d	e	f	D	E	F	3				
<b>4</b>	g	h	i	G	H	I	4				
<b>5</b>	j	k	l	J	K	L	5				
<b>6</b>	m	n	o	M	N	O	6				
<b>7</b>	p	q	r	s	P	Q	R	S	7		
<b>8</b>	t	u	v	T	U	V	8				
<b>9</b>	w	x	y	z	W	X	Y	Z	9		
<b>0</b>	space	0									

7. Press **MENU/SELECT** to store your new directory entry. You hear a confirmation tone.



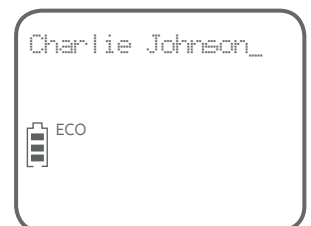
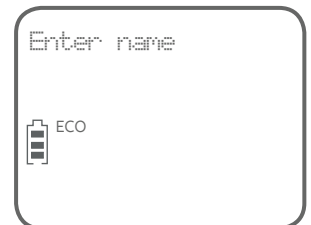
**NOTE:** The screen shows **Number repeated** if the number is already in the directory. You cannot save the same number more than once.

## Create directory entries

### Add a predialed telephone number to the directory

---

1. While the handset is in idle mode, use the dialing keys to enter the telephone number (up to 30 digits).
  - ▶ Press and hold **REDIAL/PAUSE** to insert a 3-second dialing pause (a **P** appears).
  - ▶ Press **DELETE** to erase a digit.
  - ▶ Press and hold **DELETE** to erase all digits.
2. Press **MENU/SELECT** twice to move on to edit the name. Refer to Step 6 in **Create a new directory entry** on page 34.
3. Press **MENU/SELECT** to store your new directory entry. You hear a confirmation tone.



## Review the directory

### Review directory entries

---

1. Press **▲DIR** when in idle mode. The screen shows the first entry in the directory. **List empty** appears if there are no directory entries.
2. Press **▼CID** or **▲DIR** to browse through the directory or use the dialing keys to start a name search (page 38).

**-OR-**

1. Press **MENU/SELECT** when in idle mode.
2. Press **▼CID** or **▲DIR** to scroll to **Directory**, then press **MENU/SELECT**.
3. Press **▼CID** or **▲DIR** to scroll to **Review**, then press **MENU/SELECT**. The screen shows the first entry in the directory.
4. Press **▼CID** or **▲DIR** to browse through the directory. Entries appear alphabetically by the first letter in the name.



 **NOTE:** If the telephone number in the directory exceeds 15 digits, a dash appears after the 14th digit, and the remaining digits are displayed after two seconds beginning with a dash.

## Review the directory

### Search by name

---

1. Press **▲DIR** when the handset is in idle mode.
2. When an entry appears, use the dialing keys (**0-9**) to start a name search (alphabetical search).


The directory shows the first name beginning with the first letter associated with the dialing key, if there is an entry in the directory that begins with that letter. Press

**▼CID** or **▲DIR** to scroll through the entries beginning with that letter.

3. To see other names that start with the letters on the same dialing key, keep pressing the key until the desired letter is shown. The names appear in alphabetical order.

For example, if you have the names Jennifer, Jessie, Kevin and Linda in your directory:

- ▶ If you press **5 (JKL)** once, **J** and then **Jennifer** displays.
- ▶ If you press **5 (JKL)** once, **J** displays. Press **▼CID**. **Jessie** displays.
- ▶ If you press **5 (JKL)** twice, **K** and then **Kevin** displays.
- ▶ If you press **5 (JKL)** three times, **L** and then **Linda** displays.
- ▶ If you press **5 (JKL)** four times, **5** displays.
- ▶ If you press **5 (JKL)** five times, **J** displays and then **Jennifer** displays again.

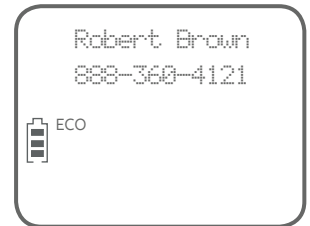
 **NOTE:** If you press a dialing key (0-9) and no name starts with any letter on that key, the directory shows the entry that matches the next letter in the directory.



## Dial, delete and edit a directory entry

You can dial, delete or edit a displayed directory entry.

See **Review directory entries** on page 37 or **Search by name** on page 38 to show an entry from the directory.



### Dial a directory number

While reviewing a directory entry, press **PHONE/FLASH** or **SPEAKER** to dial the displayed telephone number from the directory.



### Delete a directory entry

1. While reviewing a directory entry, press **DELETE**. The screen shows **Delete entry?**.
2. Press **MENU/SELECT** to delete the displayed entry from the directory. The handset shows **Deleting...** and then you hear a confirmation tone. Once deleted, you cannot retrieve that entry.



### Delete all directory entries

1. Press **MENU/SELECT** when in idle mode.
2. Press **▼CID** or **▲DIR** to scroll to **Directory**, then press **MENU/SELECT**.
3. Press **▼CID** or **▲DIR** to scroll to **Delete all**, then press **MENU/SELECT**.
4. The handset shows **Delete all?**. Press **MENU/SELECT** to confirm. The handset shows **Deleting...**. You hear a confirmation tone.



## Dial, delete and edit a directory entry

### Edit a directory entry

---

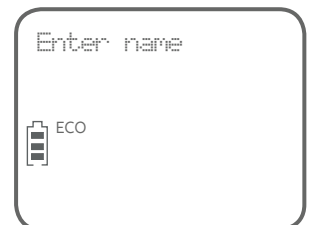
1. While reviewing a directory entry, press **MENU/SELECT**. The screen shows **Enter number** with the current number of the entry.
2. Use the dialing keys to edit the number (up to 30 digits).
  - ▶ Press **▼CID** or **▲DIR** to move the cursor to the left or right.
  - ▶ Press and hold **REDIAL/PAUSE** to enter a 3-second dialing pause (a **P** appears).
  - ▶ Press **DELETE** to erase a digit.
  - ▶ Press and hold **DELETE** to erase all digits.



#### **-OR-**

Copy a number from the redial list by pressing **REDIAL/PAUSE** and then **▼CID** or **▲DIR**, or pressing **REDIAL/PAUSE** repeatedly to locate the desired number. Press **MENU/SELECT** to copy the number.

3. Press **MENU/SELECT** to save the number. The screen shows **Enter name** briefly and then the current name of the entry.
4. Edit the characters.
  - ▶ Press **0** to add a space.
  - ▶ Press **▼CID** or **▲DIR** to move the cursor to the left or right.
  - ▶ Press **DELETE** to erase a character.
  - ▶ Press and hold **DELETE** to erase all characters.
5. Press **MENU/SELECT** to save. The handset shows the updated entry.



## About caller ID

This product supports caller ID services offered by most telephone service providers. Caller ID allows you to see the name, number, date and time of calls. The available caller ID information will appear after the first or second ring.

### **Information about caller ID with call waiting**

---

Caller ID with call waiting lets you see the name and telephone number of the caller before answering the call, even while on another call.

It may be necessary to change your telephone service to use this feature. Contact your telephone service provider if:


- ▶ You have both caller ID and call waiting, but as separate services (you may need to combine these services).
- ▶ You have only caller ID, or only call waiting service.
- ▶ You don't subscribe to caller ID or call waiting services.

There may be fees for caller ID services. In addition, services may not be available in all areas.

This product can provide information only if both you and the caller are in areas offering caller ID services and if both telephone service providers use compatible equipment. The time and date are sent by the telephone service provider along with the call information.

The caller ID information may not be available for every incoming call. The callers may intentionally block their names and/or telephone numbers.



 **NOTE:** You can use this product with regular caller ID service, or you can use this product's other features without subscribing to either caller ID or combined caller ID with call waiting service.

### **About home area code**

---


See **Home area code** on page 19 to determine if you should enter your area code. Entering the area code changes how numbers are displayed in the caller ID log and how to return a call from the caller ID log (see **View dialing options** on page 44).

## Caller ID log

### How caller ID log works

---

The telephone stores caller ID information about the last 30 incoming calls in the telephone base. Each entry may have up to 24 digits for the telephone number and 15 characters for the name. Entries are stored in reverse chronological order. The telephone deletes the oldest entry when the log is full to make room for new calls. This information is common to all handsets, so changes made to any handset are reflected in all other handsets. If you answer a call before the information appears on the screen, it does not show in the caller ID log.

 **NOTE:** The caller ID information might not be available for every incoming call. The callers might intentionally block their names and/or telephone numbers (see **Reasons for missing caller ID information** on page 47).


### Memory match

---

If the incoming telephone number matches the last seven digits of a telephone number in your directory, the name that appears on the screen matches the corresponding name in your directory.

For example, if Christine Smith calls, her name appears as **Chris** if this is what you entered into your directory.



 **NOTE:** The number shown by your caller ID is in the format sent by the telephone service provider. The telephone service provider usually delivers 10-digit telephone numbers (area code plus telephone number). If the telephone number of the caller does not match a number in your directory, the name appears as it is delivered by the telephone service provider. For example, if the telephone service provider includes the area code but the number in your directory does not, the name appears as delivered by the telephone service provider.



## Caller ID operation

### Missed (new) calls indicator

---

When you have calls that have not been reviewed, all handset screens show **XX missed calls** when in idle mode.

All entries that have not been reviewed are counted as missed (new) calls. Each time you review a caller ID log entry marked as **NEW**, the number of missed calls decreases by one.

If you do not want to review the missed (new) calls one by one, but you still want to keep them in the caller ID log, you can press and hold **OFF/CANCEL** for four seconds when the handset is idle. All the entries in the caller ID log will be considered old (reviewed), and the missed call(s) message goes away.



### Review the caller ID log

---

Review the caller ID log to find out who called, to return the call or to copy the caller's name and number into your directory.

1. When a handset is in idle mode, press **▼CID** to view the caller ID log in reverse chronological order starting with the most recent call.

**-OR-**

You can also review the caller ID log by pressing **MENU/SELECT** in idle mode, then press **▼CID** or **▲DIR** to scroll to **Caller ID log**. Press **MENU/SELECT** twice to select **Review**.

2. Press **▼CID** or **▲DIR** to scroll through the list. The handset beeps twice when you reach the beginning or end of the caller ID log.
3. Press **OFF/CANCEL** to exit the caller ID log.



#### **NOTES:**

- ▶ If the telephone number has more than 15 digits, only the last 15 digits appear in the caller ID log.
- ▶ Only one handset can review the caller ID log at a time. If another handset attempts to enter the caller ID log, it shows **Not available**.

## Caller ID operation

### View dialing options

---

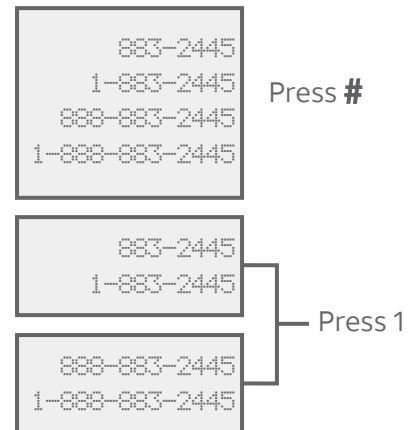
Although the caller ID log entries received typically have 10 digits (the area code plus the 7-digit number), in some areas, you may need to dial only the seven digits, 1 plus the seven digits, or 1 plus area code plus the seven digits. You can follow the steps, as mentioned below, to change the number of digits that you dial in the caller ID log.

1. When a handset is in idle mode, press **▼CID** to view the caller ID log in reverse chronological order starting with the most recent call.
2. Before dialing or saving the telephone number in the directory, press **#** (pound key) repeatedly to show different dialing options for local and long distance numbers.

**-OR-**

Press **1** repeatedly if you need to add or remove **1** in front of the telephone number.

3. When the number is in the correct format for dialing, press **PHONE/FLASH** or **▶/SPEAKER** to call the number.



To save the number to the directory, see **Save a caller ID log entry to the directory** on page 46.



**NOTE:** If you do not need to dial the area code for local calls, make sure to program your home area code (see **Home area code** on page 19).

## Caller ID operation

### Dial a caller ID log entry

---

1. While reviewing the caller ID log entry, press **▼CID** or **▲DIR** to browse through the caller ID log.
2. Press **PHONE/FLASH** or **▶/SPEAKER** to dial the displayed entry.

### Delete caller ID log entries

---

#### To delete a caller ID log entry:

1. While reviewing the caller ID log, press **▼CID** or **▲DIR** to browse through the caller ID log.
2. Press **DELETE** to delete the displayed entry from the caller ID log. The screen shows **Deleting...** with a confirmation tone. Once deleted, you cannot retrieve that entry.

#### To delete all caller ID log entries:

1. Press **MENU/SELECT** in idle mode.
2. Press **▼CID** or **▲DIR** to scroll to **Caller ID log**, then press **MENU/SELECT**.
3. Press **▼CID** or **▲DIR** to scroll to **Delete all**, then press **MENU/SELECT**. The screen shows **Delete all?**.
4. Press **MENU/SELECT** to delete all entries from the caller ID log. The screen shows **Deleting...** with a confirmation tone. Once deleted, you cannot retrieve those entries.



## Caller ID operation

### Save a caller ID log entry to the directory

1. While reviewing the caller ID log, press **▼CID** or **▲DIR** to browse through the caller ID log.
2. When the desired entry displays, press **MENU/SELECT**.
3. Press **MENU/SELECT** again to choose **To Directory**.
4. When the screen shows **Enter number**, use the dialing keys to modify the telephone number (up to 30 digits).
  - ▶ Press **▼CID** or **▲DIR** to move the cursor to the left or right.
  - ▶ Press and hold **REDIAL/PAUSE** to enter a 3-second dialing pause (a **P** appears).
  - ▶ Press **DELETE** to erase a digit.
  - ▶ Press and hold **DELETE** to erase all digits.
5. Press **MENU/SELECT** to save the number in the display. The screen shows **Enter name**.
6. Use the dialing keys and refer to **Character chart** on page 35 to modify the name (up to 15 characters).
  - ▶ Press **0** to add a space.
  - ▶ Press **▼CID** or **▲DIR** to move the cursor to the left or right.
  - ▶ Press **DELETE** to erase a character.
  - ▶ Press and hold **DELETE** to erase all characters.
7. Press **MENU/SELECT** to save. You hear a confirmation tone.



#### NOTES:

- ▶ The screen shows **Number repeated** if the number is already in the directory. You cannot save the same number more than once.
- ▶ If you try to save a caller ID log entry to the directory without a number, the handset sounds an error tone.
- ▶ If the telephone number has more than 15 digits, only the last 15 digits appear in the caller ID log. However, the telephone can still save all digits (up to 24 digits) of that telephone number from the caller ID log in the directory.
- ▶ You might need to change how a caller ID number is saved in the directory if the entry does not appear in the correct format. Caller ID numbers might appear with an area code that is not necessary for local calls, or without a **1** that is necessary for long distance calls. For details, see **View dialing options** on page 44.

## Reasons for missing caller ID information

There are occasions when other information or no information shows for various reasons:

<b>Screen message</b>	<b>Reason</b>
<b>PRIVATE NAME</b>	The caller prefers not to show the name.
<b>PRIVATE NUMBER</b>	The caller prefers not to show the telephone number.
<b>PRIVATE CALLER</b>	The caller prefers not to show the name and telephone number.
<b>UNKNOWN NAME</b>	Your telephone service provider cannot determine the caller's name.
<b>UNKNOWN NUMBER</b>	Your telephone service provider cannot determine the caller's telephone number.
<b>UNKNOWN CALLER</b>	Your telephone service provider cannot determine the caller's name and telephone number. Calls from other countries may also generate this message.

## About call block

If you have subscribed to caller ID service, you can use the call block feature to reject certain calls automatically. The call block list stores up to 150 entries. The telephone system can reject calls automatically according to:

- ▶ Numbers saved into the call block list
- ▶ Incoming calls without numbers

This feature is only available on the cordless handset. Blocked calls are disconnected automatically.



**NOTE:** The blocked calls are displayed as **Blocked call** in the caller ID log.

## Call block

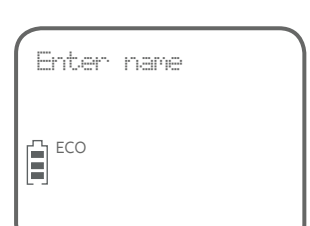
### Add a call block entry


1. Press **MENU/SELECT** when the handset is idle.
2. Press **▼CID** or **▲DIR** to scroll to **Call block**, then press **MENU/SELECT**.
3. Press **MENU/SELECT** again to choose **Block list**.
4. Press **▼CID** or **▲DIR** to scroll to **Add new entry**, then press **MENU/SELECT**.
5. When the screen displays **Enter number**, use the dialing keys to enter a number (up to 30 digits).
  - ▶ Press **▼CID** or **▲DIR** to move the cursor to the left or right.
  - ▶ Press and hold **REDIAL/PAUSE** to enter a 3-second dialing pause (a **P** appears).
  - ▶ Press **DELETE** to erase a digit.
  - ▶ Press and hold **DELETE** to erase all digits.

**-OR-**

Copy a number from the redial list by pressing **REDIAL/PAUSE**. Then, press **▼CID** or **▲DIR** or **REDIAL/PAUSE** repeatedly to find the desired number. Press **MENU/SELECT** to copy the number.

6. Press **MENU/SELECT** to move on to the name.
7. When the screen displays **Enter name**, use the dialing keys to enter a name (up to 15 characters). Each time you press a key, the character on that key appears. Additional key presses produce other characters on that key. Press a key repeatedly until the desired character appears. The first character of every word is capitalized.
  - ▶ Press **▼CID** or **▲DIR** to move the cursor to the left or right.
  - ▶ Press **0** to add a space.
  - ▶ Press **DELETE** to erase a character.
  - ▶ Press and hold **DELETE** to erase all characters.
8. Press **MENU/SELECT** to store your call block entry.



 **NOTE:** The handset shows **Number repeated** if the number is already in the call block list. You cannot save the same number twice.

## Call block

### Review call block list

---

1. Press **MENU/SELECT** when the handset is idle.
2. Press **▼CID** or **▲DIR** to scroll to **Call block**, and then press **MENU/SELECT**.
3. Press **MENU/SELECT** again to choose **Block list**.
4. Press **MENU/SELECT** again to choose **Review**.
5. Press **▼CID** or **▲DIR** to browse through the call block entries.



**NOTE:** List empty appears if there are no call block entries.

### Save a caller ID log entry to call block list

---

1. Search for the desired caller ID log entry (see **Review the caller ID log** on page 43).
2. When the desired entry displays, press **MENU/SELECT**.
3. Press **▼CID** or **▲DIR** to scroll to **To Call block**, then press **MENU/SELECT**.
4. The handset displays **Enter number**. Use the dialing keys to edit the number, when necessary.
  - ▶ Press **▼CID** or **▲DIR** to move the cursor to the left or right.
  - ▶ Press and hold **REDIAL/PAUSE** to enter a 3-second dialing pause (a **P** appears).
  - ▶ Press **DELETE** to erase a digit.
  - ▶ Press and hold **DELETE** to erase all digits.
5. Press **MENU/SELECT** to move to the name. The screen displays **Enter name**.
6. Use the dialing keys to add or edit the name.
  - ▶ Press **▼CID** or **▲DIR** to move the cursor to the left or right.
  - ▶ Press **0** to add a space.
  - ▶ Press **DELETE** to erase a character.
  - ▶ Press and hold **DELETE** to erase all characters.
7. Press **MENU/SELECT** when done.



## Call block

### Edit a call block entry

---

1. Search for the desired entry in the call block list (see **Review call block list** on page 50).
2. When the desired entry displays, press **MENU/SELECT**. The screen displays **Enter number** along with the phone number to be edited. If you only want to edit the name, skip to Step 4.



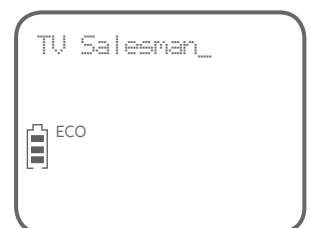
3. Use the dialing keys to edit the number.
  - ▶ Press **▼CID** or **▲DIR** to move the cursor to the left or right.
  - ▶ Press and hold **REDIAL/PAUSE** to enter a 3-second dialing pause (a **P** appears).
  - ▶ Press **DELETE** to erase a digit.
  - ▶ Press and hold **DELETE** to erase all digits.



**-OR-**

Copy a number from the redial list by pressing **REDIAL/PAUSE** and then **▼CID** or **▲DIR**, or pressing **REDIAL/PAUSE** repeatedly to locate the desired number. Press **MENU/SELECT** to copy the number.

4. Press **MENU/SELECT** to move on to the name. The screen displays **Enter name** along with the name to be edited.
5. Use the dialing keys to edit the name.
  - ▶ Press **▼CID** or **▲DIR** to move the cursor to the left or right.
  - ▶ Press **0** to add a space.
  - ▶ Press **DELETE** to erase a character.
  - ▶ Press and hold **DELETE** to erase all characters.
6. Press **MENU/SELECT** to save the entry.



## Call block

### Delete a call block entry

---

1. Search for the desired entry in the call block list (see **Review call block list** on page 50).
2. When the desired entry displays, press **DELETE** on the handset and the screen shows the next entry. You cannot retrieve a deleted entry.



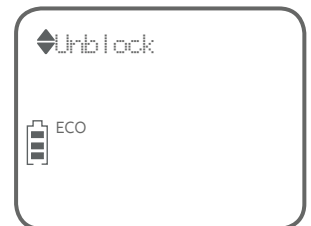
**NOTE:** If the call block list is empty after an entry is deleted, the screen displays **List empty**.

### Block calls without number

---

You can use this feature to reject all incoming calls which are “out of area” or with numbers set to “Private”.

1. Press **MENU/SELECT** when the handset is idle.
2. Press **▼CID** or **▲DIR** to scroll to **Call block**, then press **MENU/SELECT**.
3. Press **▼CID** or **▲DIR** to scroll to **Calls w/o num**, then press **MENU/SELECT**.
4. Press **▼CID** or **▲DIR** to choose **Unblock** or **Block**, then press **MENU/SELECT**.



### Mute first ring

---

Your telephone rings once for blocked calls. You can choose to mute the first ring for all incoming calls, so that there will be no ring for blocked calls. By default, the first ring is set to **On**.

1. Press **MENU/SELECT** when the handset is idle.
2. Press **7464#** on the handset.
3. Press **▼CID** or **▲DIR** to choose **First ring: On** to keep the first ring, or **First ring: Off** to mute the first ring.
4. Press **MENU/SELECT** to confirm.



**NOTE:** If you have muted the first ring, you will hear one ring less before the answering system and voicemail answer the incoming calls.

## Answering system settings

Use the answering system menu in the handset to turn the answering system on or off or change the settings for the outgoing announcement, call screening, number of rings, remote access code and the message alert tone.

### Announcement

---

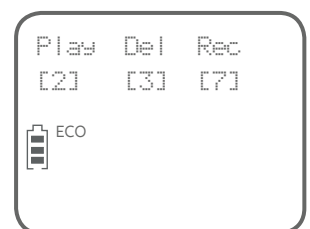
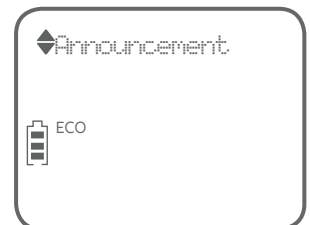
The announcement is the greeting callers hear when calls are answered by the answering system.

The telephone has a default announcement, *“Hello. Please leave a message after the tone.”* You can use this announcement, or record your own announcement.

You can record an announcement up to 90 seconds. The system does not record any announcement shorter than 2 seconds.

#### To play the current announcement:

1. Press **MENU/SELECT** when the handset is idle.
2. Press **▼CID** or **▲DIR** to scroll to **Answering sys**, then press **MENU/SELECT**.
3. Press **MENU/SELECT** again to select **Announcement**. The system announces, *“To play, press 2. To record, press 7.”*
4. Press **2** to play the current announcement from the speakerphone.
  - ▶ Press **▲DIR/VOLUME** to increase or press **▼CID/VOLUME** to decrease the message playback volume.
  - ▶ Press **◀SPEAKER** to switch between speakerphone and handset.




## Answering system settings

### To record a new announcement:

1. Press **MENU/SELECT** when the handset is idle.
2. Press **▼CID** or **▲DIR** to scroll to **Answering sys**, then press **MENU/SELECT**.
3. Press **MENU/SELECT** to select **Announcement**. The system announces, “*To play, press 2. To record, press 7.*”
4. Press **7**. The system announces “*Record after the tone. Press 5 when you are done.*”
5. Face the handset and speak towards the microphone to record your announcement.
6. Press **5** when you finish the recording. The handset plays back the recorded announcement.



 **NOTE:** If the answering system memory is full, when you press **7** in Step 4, the answering system announces, “*Memory is full.*” You must delete some messages before you can record a new announcement. Refer to **Message playback** on page 65.

### To delete an announcement:

1. Press **MENU/SELECT** when the handset is idle.
2. Press **▼CID** or **▲DIR** to scroll to **Answering sys**, then press **MENU/SELECT**.
3. Press **MENU/SELECT** to select **Announcement**. The system announces, “*To play, press 2. To record, press 7.*”
4. Press **2** to play the current announcement from the speakerphone.
5. Press **3** during playback to delete your recorded announcement. The system announces, “*Announcement deleted.*”

If your announcement is deleted, calls are answered with the default announcement, “*Hello. Please leave a message after the tone.*”

## Answering system settings

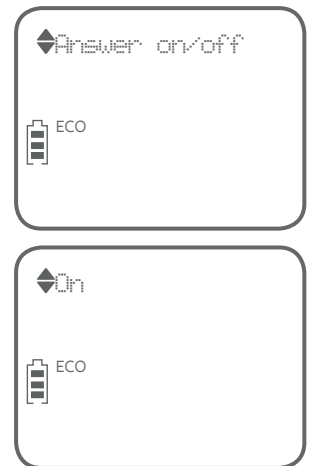
### Answer on/off

---

Unless you change it, the answering system is on and ready to record messages. If the answering system is on, the **ANS ON** icon displays on the handset screen and the **ANS ON** light on the telephone base is on. You can turn the answering system off, but if you do so, the answering system does not answer calls and record incoming messages.

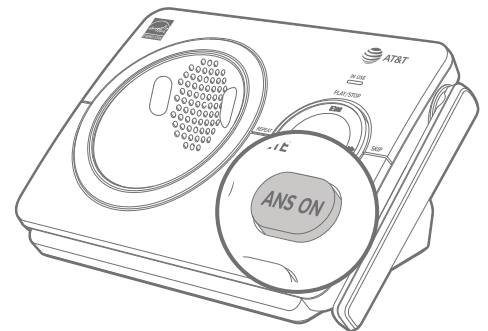
#### Using the handset:

1. Press **MENU/SELECT** when the handset is idle.
2. Press **▼CID** or **▲DIR** to scroll to **Answering sys**, then press **MENU/SELECT**.
3. Press **▼CID** or **▲DIR** to scroll to **Answer on/off**, then press **MENU/SELECT**.
4. Press **▼CID** or **▲DIR** to select between **On** and **Off**, then press **MENU/SELECT** to save the setting.



#### Using the telephone base:

- ▶ Press **ANS ON** to turn the answering system on or off. If the answering system is turned on, it announces, “Calls will be answered.” If the answering system is turned off, it announces, “Calls will not be answered.”



#### NOTES:

- ▶ If the answering system is off and there is an incoming call, the system answers after 10 rings and announces to the caller, “Please enter your remote access code.” For more information about remote access, see **Remote access code** on page 59.
- ▶ You can turn the answering system on or off from either the handset or the telephone base, but you can only use the handset to change the other answering system settings.
- ▶ You cannot turn the answering system on or off while a handset is on a call or the telephone base is playing messages.

## Answering system settings

### Voice guide

---

This feature is an alternative way for you to do the basic setup of the answering system. You can follow the voice guide to record your own announcement, set the number of rings, and set the message alert tone.

This feature is only available on the cordless handset.

1. Press **MENU/SELECT** when the handset is idle.
2. Press **▼CID** or **▲DIR** to scroll to **Answering sys**, then press **MENU/SELECT**.
3. Press **▼CID** or **▲DIR** to scroll to **Voice guide**, then press **MENU/SELECT**. You hear a voice prompt, *“Hello! This voice guide will assist you with the basic setup of your answering system.”*
4. Set up your answering system by inputting designated numbers, as instructed in the voice guide.



#### NOTES:

- ▶ You can press **OFF/CANCEL** to quit the voice guide at any time.
- ▶ After a power outage, the handset prompts you to set the date and time. After the date and time setting is done or skipped, the handset prompts if you want to set up the answering system via voice guide. Press **MENU/SELECT** to start the setup.

## Answering system settings

### Call screening

---

You can choose whether or not incoming messages are played through the speaker on the telephone base while they are being recorded. However, whether the call screening is on or off, the incoming messages can always be played through the handset.

#### To change the settings:

1. Press **MENU/SELECT** when the handset is idle.
2. Press **▼CID** or **▲DIR** to scroll to **Answering sys**, then press **MENU/SELECT**.
3. Press **▼CID** or **▲DIR** to scroll to **Ans sys setup**, then press **MENU/SELECT**.
4. Press **MENU/SELECT** again to select **Call screening**.
5. Press **▼CID** or **▲DIR** to choose **On** or **Off**.
6. Press **MENU/SELECT** to save your setting.



**NOTE:** For more details about the features of call screening, see **Call screening** on page 63.

## Answering system settings

### Number of rings

---

You can set the answering system to answer an incoming call after **2, 3, 4, 5,** or **6** rings. You can also select **Toll saver**, which is explained below. Unless you change it, the answering system answers an incoming call after three rings.

#### To set the number of rings:

1. Press **MENU/SELECT** when the handset is idle.
2. Press **▼CID** or **▲DIR** to scroll to **Answering sys**, then press **MENU/SELECT**.
3. Press **▼CID** or **▲DIR** to scroll to **Ans sys setup**, then press **MENU/SELECT**.
4. Press **▼CID** or **▲DIR** to scroll to **# of rings**, then press **MENU/SELECT**.
5. Press **▼CID** or **▲DIR** to scroll and choose among **2, 3, 4, 5, 6** or **Toll saver**.
  - ▶ Toll saver - The answering system answers a call after two rings when you have new messages, and after four rings when there are no new messages. This feature allows you to check for new messages and avoid paying long distance charges if you are calling from out of your local area.
6. Press **MENU/SELECT** to save your setting.



#### NOTES:

- ▶ If you subscribe to a voicemail service offered through your telephone service provider, see **Answering system and voicemail indicators** on page 61.
- ▶ If you have muted the first ring, you will hear one ring less before the answering system answers the incoming calls.



## Answering system settings

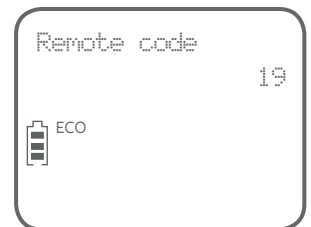
### Remote access code

---

To access your answering system remotely from any touch-tone telephone, you need to enter a 2-digit number (**00-99**). Unless you change it, the remote access code is **19**.

#### To change the remote access code:

1. Press **MENU/SELECT** when the handset is idle.
2. Press **▼CID** or **▲DIR** to scroll to **Answering sys**, then press **MENU/SELECT**.
3. Press **▼CID** or **▲DIR** to scroll to **Ans sys setup**, then press **MENU/SELECT**.
4. Press **▼CID** or **▲DIR** to scroll to **Remote code**, then press **MENU/SELECT**.
5. Press **▼CID** or **▲DIR** to select the remote access code, or use the dialing keys to enter the desired number (**00-99**).
6. Press **MENU/SELECT** to save your setting.



**NOTE:** For more details about the remote access feature, refer to **Remote access** on pages 70-71.

## Answering system settings

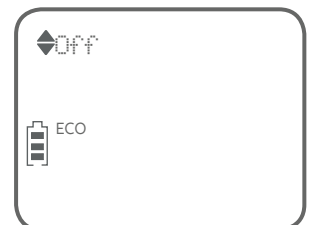
### Message alert tone

---

When the message alert tone is on, and there is at least one new message, the telephone base beeps every 10 seconds. By default, the message alert tone is set to **Off**.

#### To change the setting:

1. Press **MENU/SELECT** when the handset is idle.
2. Press **▼CID** or **▲DIR** to scroll to **Answering sys**, then press **MENU/SELECT**.
3. Press **▼CID** or **▲DIR** to scroll to **Ans sys setup**, then press **MENU/SELECT**.
4. Press **▼CID** or **▲DIR** to scroll to **Msg alert tone**, then press **MENU/SELECT**.
5. Press **▼CID** or **▲DIR** to choose **On** or **Off**.
6. Press **MENU/SELECT** to save your setting.



#### NOTES:


- ▶ The message alert tone beeps only if all the following conditions are met:
  - The answering system is on.
  - The message alert tone is on.
  - There are new messages.
- ▶ To temporarily turn off the message alert tone, see **Temporarily turn off the message alert tone** on page 64.

## Answering system overview

### Answering system and voicemail indicators

---

Your telephone has separate indicators for two different types of voice messages: those left on its built-in answering system and those left on your service provider's voicemail (fees may apply). Your telephone's built-in answering system messages and voicemail messages are separate. Each alerts you to new messages differently.

- ▶ If **XX new messages** displays on the handset and the message window on the telephone base flashes, there are new messages recorded on the built-in answering system. To listen to your message(s), press **MENU/SELECT** twice on the handset (page 65) or press **PLAY/STOP▶/■** on the telephone base (page 65).
- ▶ If  and **New voicemail** display on the handset, your telephone service provider is indicating that it has new voicemail for you. To listen to your voicemail, dial an access number provided by your telephone service provider, followed by a security code or PIN.

Some service providers bundle or combine multiple services like voicemail and call waiting, so you may not be aware that you have voicemail. To check what services you have and how to access them, contact your telephone service provider.

To use your voicemail service rather than the answering system, turn off the answering system. To use the answering system rather than your voicemail service, contact your telephone service provider to deactivate the voicemail service.

### Using the answering system and voicemail together

---

You can also use your telephone answering system and voicemail together by setting your built-in answering system to answer before voicemail answers, as described below. To learn how to program your voicemail settings, contact your telephone service provider. If you are on a call, or if the answering system is busy recording a message and you receive another call, the second caller can leave a voicemail message.

If you have voicemail provided by your telephone service provider, we recommend setting your answering system to answer calls at least 2 rings earlier than your voicemail is set to answer. For example, if your voicemail answers after 6 rings, set your answering system to answer after 4 rings. Some voicemail providers may program the delay before answering calls in seconds instead of rings. In this case, allow 6 seconds per ring when determining the appropriate setting.

## Answering system overview

### **Message capacity**

---

The answering system can record up to 99 messages, depending on the length of each message. The maximum recording time (including message, announcement and memo) is 22 minutes. The actual recording time depends on individual message characteristics. Messages remain available for replay until you delete them.

If the answering system has less than 3 minutes of recording time left, “*Less than 3 minutes to record*” is announced before the message playback and **Rec mem low** appears on the handset screen.

If the memory is full, the answering system announces, “*Memory is full.*” The number of messages and **F** flash, alternatively, in the message window, and **Rec mem full** appears on the handset screen. You must delete some messages before recording new ones.

### **Voice prompts**

---

The system provides voice prompts to guide you through the setup procedures on your handsets, message playback, remote access and recording outgoing announcements. The system also provide basic answering system setup via voice guide to record your own announcement, set the number of rings, and set the message alert tone.

## Answering system overview

### Call screening

---

#### Call screening at the base:

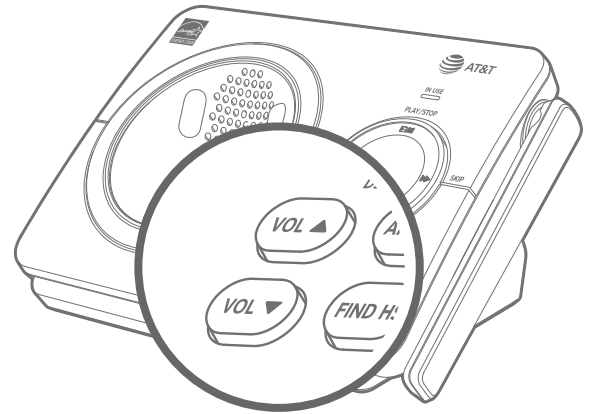
If the answering system and call screening are on, the announcement and the incoming message can be broadcast at the telephone base when a call arrives.

You can turn call screening on or off using the handset (see **Call screening** on page 57). When call screening is off, you can temporarily turn on the call screening by pressing **PLAY/STOP▶/■** or **VOL ▲** on the telephone base. The call screening will automatically be off for the next incoming call.

If call screening is on and you want to silence the telephone base while it is recording messages, press **PLAY/STOP▶/■** on the telephone base. The call screening will be on for the next incoming call.

#### Call screening at the handset:

If the answering system is turned on, when there is an incoming call and it is answered by the answering system, the handset screen shows **To screen call** and **press [SELECT]**, alternately. By pressing **MENU/SELECT**, you can screen the call at the handset.







## Answering system overview

### Call intercept

---

While call screening, you can stop the recording and speak to the caller.

- ▶ If the call is screened at the base, press  **PHONE/FLASH** or  **SPEAKER** on the handset to stop recording and speak to the caller.
- ▶ If the call is screened at the handset, press  **PHONE/FLASH** on the handset to stop recording and speak to the caller. You can press  **SPEAKER** to switch between the speakerphone and the handset.

### Temporarily turn off the message alert tone

---

If the message alert tone is turned on, the telephone base beeps every ten seconds when there are new messages. Pressing any telephone base key (except **FIND HS**) temporarily silences the message alert tone.

If you press **DELETEx** when in idle mode to temporarily turn off the message alert tone, there is a voice prompt directing you to press **DELETEx** again to delete all old messages. The message alert tone is temporarily off. Only press **DELETEx** a second time if you wish to erase all old messages in your answering system.

The message alert tone resumes when you receive another message.


## Message playback

You can listen to messages at the telephone base or on a cordless handset. When playback begins, the total number of messages is announced. Before each message, you hear the day and time of the recording. After the last message, you hear, “*End of messages.*”


If the date and time are not set, you hear, “*Time and date not set.*” before playback. If the recording time is less than three minutes, you hear, “*Less than three minutes to record.*” before playback (see **Message capacity** on page 62).


### To listen to messages at the telephone base:

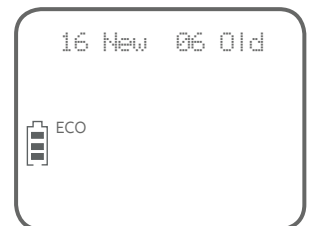
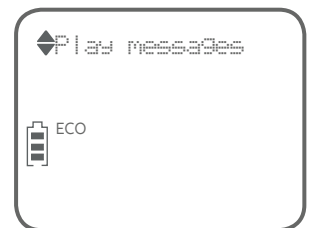
1. Press **PLAY/STOP▶/■** on the telephone base to listen to the messages.
2. The system announces the number of messages, then begins playback. The message sequence is shown on the message window.
3. Press **PLAY/STOP▶/■** to stop the playback.

 **NOTE:** If there are no messages in the answering system, the system announces, “*You have no message.*” when you attempt to listen to messages.

### To listen to messages at the handset:

1. Press **MENU/SELECT** when the handset is idle.
2. Press **MENU/SELECT** again to select **Play messages**.
3. The system announces the number of messages, then begins playback. The message sequence is shown on the handset’s screen.
4. Press  **OFF/CANCEL** to stop the playback.

 **NOTE:** If there are no messages in the answering system, the handset shows **No message** and announces, “*You have no message.*” when you attempt to listen to messages.



## Message playback

### Options during playback

---

When a message is playing, you can adjust the playback volume, skip, repeat, or delete the message.

#### When messages are playing on the telephone base:

- ▶ Press **VOL ▲** or **VOL ▼** to adjust the message playback volume (1-8).
- ▶ Press **◀◀REPEAT** to repeat the playing message.
- ▶ Press **◀◀REPEAT** twice to listen to the previous message.
- ▶ Press **▶▶SKIP** to skip to the next message.
- ▶ Press **DELETEx** to delete the message. The telephone base announces, *“Message deleted.”*
- ▶ Press **PLAY/STOP▶/■** to stop the playback.

#### When messages are playing on the handset:

- ▶ Press **▲DIR/VOLUME** to increase or press **▼CID/VOLUME** to decrease the message playback volume.
- ▶ Press **🔊/SPEAKER** to switch between speakerphone and handset.
- ▶ Press **4** to repeat the playing message.
- ▶ Press **4** twice to listen to the previous message.
- ▶ Press **6** to skip to the next message.
- ▶ Press **3** to delete the message. The handset announces, *“Message deleted.”*
- ▶ Press **🔇OFF/CANCEL** to stop playback.



## Message playback

### Delete all old messages

---

Use this feature to delete all old messages. Once deleted, you cannot retrieve the deleted messages. New messages cannot be deleted until you have listened to them.

#### To delete all old messages on the telephone base:

1. Press **DELETEx** on the telephone base when the answering system is not in use. The system announces, *“To delete all old messages, press DELETE again.”*
2. Press **DELETEx** again. The system announces, *“All old messages deleted.”*

#### To delete all old messages on the handset:

1. Press **MENU/SELECT** when the handset is idle.
2. Press **▼CID** or **▲DIR** to scroll to **Answering sys**, then press **MENU/SELECT**.
3. Press **▼CID** or **▲DIR** to scroll to **Delete all old**.
4. Press **MENU/SELECT** to confirm. The screen shows **Deleting...** and then **No old messages** with a confirmation tone.



## Recording and playing memos

Memos are your own recorded messages used as reminders for yourself or others using the same answering system. Play and delete them in the same way as incoming messages.

### Record a memo

---

1. Press **MENU/SELECT** when the handset is idle.
2. Press **▼CID** or **▲DIR** to scroll to **Answering sys**, then press **MENU/SELECT**.
3. Press **▼CID** or **▲DIR** to scroll to **Record memo**.
4. Press **MENU/SELECT**. The system announces, *“Record after the tone. Press 5 when you are done.”*
5. Speak towards the microphone on the handset after a long beep. You can record a memo up to 3 minutes. Memos shorter than 2 seconds are not recorded.
6. Press **5** to stop recording. The system announces *“Recorded”*.



### Play back memos

---

Memos are stored as messages. See **Message playback** on pages 65-67 for instructions on playback and deletion.

## Message window displays

The message window on the telephone base displays the total number of messages. See the following table for other message window displays.

<b>0</b>	There are no messages in the answering system.
<b>0</b> (flashing)	After a power failure, the number in the message window flashes to indicate that the date and time need to be set.
<b>1-99</b>	<ul style="list-style-type: none"> <li>▶ Total number of messages and memos.</li> <li>▶ Current message number during old message playback.</li> </ul>
<b>1-99</b> (flashing)	<ul style="list-style-type: none"> <li>▶ Total number of new messages and memos. The number flashes when there are new messages that have not been reviewed.</li> <li>▶ Current message number during new message playback.</li> <li>▶ After a power failure, the number in the message window flashes to indicate that the date and time need to be set.</li> </ul>
<b>1-99</b> and <b>F</b> (alternating)	Memory is full. Messages must be deleted before new messages can be recorded.
--	<ul style="list-style-type: none"> <li>▶ The answering system is being programmed by a system handset.</li> <li>▶ The answering system is answering a call or recording a memo or announcement.</li> <li>▶ The answering system is being accessed remotely.</li> <li>▶ The directory or caller ID log is being accessed by a system handset.</li> </ul>
<b>0-6</b>	Telephone base ringer volume while adjusting.
<b>1-8</b>	Speaker volume level of the telephone base while adjusting.

## Remote access

You can access the answering system remotely by dialing your home telephone number from any touch-tone telephone.

### **Remotely access the answering system**

---

1. Dial your telephone number from any touch-tone telephone.
2. When the answering system answers, enter the 2-digit remote access code (**19**, by default; refer to **Remote access code** on page 59). The answering system automatically announces the number of messages (new or old) if there are any.
3. If there are new messages, the answering system automatically begins to play all new messages only.

**-OR-**

If there are no new messages, the answering system automatically begins to play all old messages.

4. You can also enter the remote commands:

<b>1</b>	Press to listen to all messages. If there are new messages, the system plays only the new messages (in chronological order). If there are no new messages, the system plays all old messages (in chronological order).
<b>2</b>	Press to listen to new messages only.
<b>3</b>	Press during message playback to delete the current message.
<b>33</b>	Press to delete all old messages.
<b>4</b>	Press 4 to repeat the playing message. Press 4 twice to listen to the previous message.
<b>5</b>	Press to stop playback and recording.
<b>*5</b>	Press to listen to a list of remote commands.
<b>6</b>	Press during playback to skip the current message and advance to the next message.
<b>*7</b>	Press to record a new announcement. Begin speaking after the long beep.
<b>8</b>	Press to end remote access (the call ends).
<b>0</b>	Press to turn the answering system on or off.

## Remote access

5. Hang up to end the call.

Cut out and carry the remote access wallet card at the back of this user's manual for quick reference.



### **NOTES:**

- ▶ If you do not enter a valid remote access code, the system answers the call automatically.
- ▶ Once the messages have played, the telephone announces the help menu options. If you do not press any key with 20 seconds, the remote access call ends automatically.
- ▶ If the memory is full, the answering system answers after 10 rings and announces, *"Memory is full. Enter the remote access code."* Enter your remote access code to access the messages and announcements.
- ▶ When the answering system is turned off, the telephone answers after 10 rings, and announces, *"Please enter your remote access code."*

## Adding and registering handsets/headsets/speakerphones

Your telephone can support up to five DECT 6.0 cordless handsets, headsets or speakerphones. You can purchase additional handsets AT&T EL50019, cordless headsets or speakerphones (sold separately) to expand your telephone system. Visit <https://telephones.att.com/accessories> for a list of compatible DECT 6.0 cordless headsets and speakerphones. Each new handset, headset or speakerphone must be registered to the telephone base before use. You must register each handset, headset or speakerphone separately.

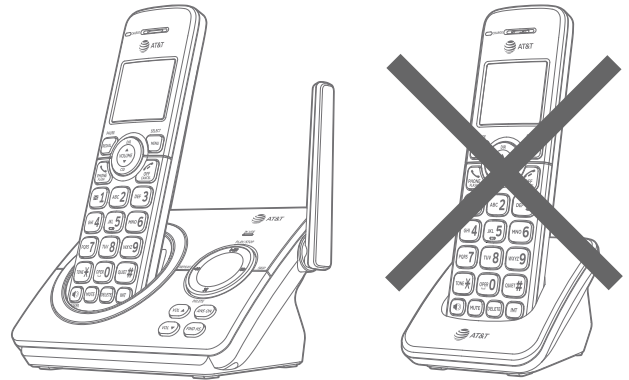
To register a cordless headset or speakerphone to this telephone system, please refer to the corresponding user's manual for details. To register a cordless handset, see below.

The handsets provided within your product box are already registered as **HANDSET 1**, and so forth. Additional handsets are assigned numbers in the sequential order they are registered (up to **HANDSET 5**).

### Register a handset to the telephone base

---

1. Before you begin registration, make sure the handset is out of the telephone base or charger and shows **To register HS...** and **...see manual**, alternately.
2. Put the handset you wish to register on the telephone base cradle.
3. The **IN USE** light on the telephone base turns on. After about 10 seconds, the handset shows **Registering...** The handset shows **Registered** and you hear a confirmation tone if the registration was successful. The **IN USE** light turns off. The handset is now registered with the telephone base.



For registration, put the handset on the telephone base, not the handset charger.

If the registration fails, the handset displays **Reg. failed** and then **To register HS...** and **...see manual**, alternately. Try the registration again by removing the handset from the telephone base and then placing it back in.



#### NOTES:

- ▶ You cannot register a handset if any other system handset is in use.
- ▶ You can only register one handset to the telephone base at a time.

## Deregistering handsets

If you want to replace a handset, or reassign the designated handset number of a registered handset, you must deregister all handsets that are registered to the telephone base, and then register each handset individually.

To make deregistration easier, read all of the instructions on this page before you begin.

### **Deregister all handsets from the telephone base**

---

In addition to the cordless handsets, this operation will also deregister all cordless headsets and speakerphones registered to your telephone base.

1. Press and hold **FIND HS** on the telephone base for about 10 seconds until the **IN USE** light on the telephone base turns on and starts to flash. Then, release **FIND HS**.
2. Immediately press **FIND HS** again while the **IN USE** light is still flashing. The **IN USE** light flashes for approximately five seconds.
3. The deregistration takes about 10 seconds to complete. All handsets display **To register HS...** and **...see manual**, alternately, if the deregistration was successful.

To register the handset(s) to the telephone base again, follow the registration instructions on the previous page.









#### **NOTES:**

- ▶ If the deregistration fails, you may need to reset the system and try again. To reset, unplug the power from the telephone base and plug it back in.
- ▶ You cannot deregister the handsets if any other system handset is in use.
- ▶ Even if the battery is depleted, you can still deregister the handsets by following the steps mentioned above. After the handset is charged for at least ten minutes, the screen shows **To register HS...** and **...see manual**, alternately.

# Screen icons, indicator lights and alert tones

## Screen icons



 (flashing)	The battery icon flashes when the battery is low and needs charging.
 (animated display)	The battery icon animates when the battery is charging.
	The battery icon becomes solid when the battery is fully charged.
	The handset ringer is turned off.
	There are new voicemail received from the telephone service provider.
<b>ANS ON</b>	The answering system is turned on.
<b>ECO</b>	The ECO mode activates automatically to reduce power consumption when the handset is within range from the telephone base.
<b>NEW</b>	The entry you are reviewing is new in the caller ID log.
	The message number currently playing and total number of new/old messages recorded.

## Handset indicator lights

**CHARGE** light

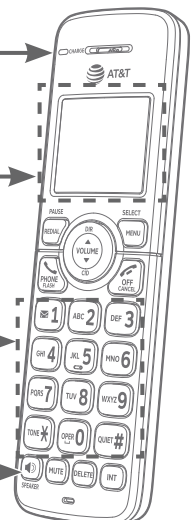
On when the handset is charging in the telephone base or charger.

Extra large display

Lighted big buttons

 **SPEAKER** light

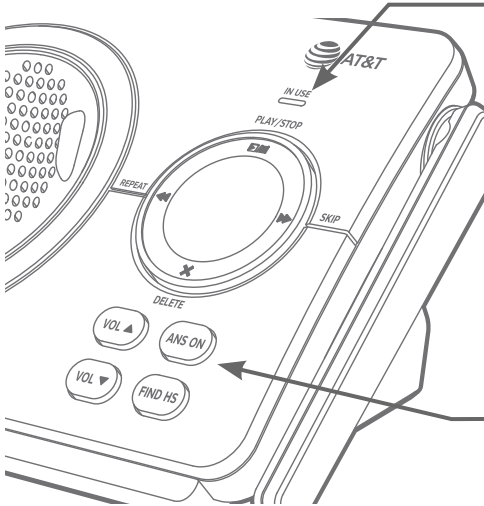
On when the speakerphone is in use.





## Screen icons, indicator lights and alert tones

### Telephone base indicator lights



#### IN USE light

- ▶ On when the handset is in use, when the answering system is answering an incoming call or when the answering system is being accessed remotely.
- ▶ On when a handset is being registered.
- ▶ Flashes slowly when another telephone on the same line is in use, or when all handsets are being deregistered.
- ▶ Flashes quickly when there is an incoming call.

#### ANS ON light

On when the built-in answering system is on.

### Handset alert tones

1 short beep	<ul style="list-style-type: none"> <li>▶ A key is pressed.</li> <li>▶ Plays at the end of each message playback.</li> <li>▶ End of recording.</li> </ul>
1 long beep	<ul style="list-style-type: none"> <li>▶ Beginning of recording.</li> <li>▶ Plays at the end of all messages playback.</li> </ul>
2 short beeps	<ul style="list-style-type: none"> <li>▶ Error tone. The command has failed.</li> <li>▶ You have reached the beginning or end of the list.</li> <li>▶ You have reached the minimum or maximum listening volume.</li> </ul>
3 short high-pitched beeps	Confirmation tone. The telephone has completed the command successfully.
4 short beeps	Low battery warning.

### Telephone base alert tones

1 short beep	Plays at the end of each message playback.
Beeps every 10 seconds	Message alert tone is on and there are new messages.
1 long beep	<ul style="list-style-type: none"> <li>▶ Call screening is on and the answering system is about to record a message.</li> <li>▶ Plays at the end of all messages playback.</li> </ul>

## Handset display screen messages

<b>Blocked call</b>	An incoming call is blocked.
<b>Calling HS X</b> (For models with two or more handsets only)	The handset is calling another handset (for intercom calls).
<b>Ended</b>	You have just ended a call.
<b>HS X is calling</b> (For models with two or more handsets only)	Another handset is calling.
<b>Incoming call</b>	There is an incoming call.
<b>Intercom</b>	The handset is on an intercom call.
<b>Intercom to:</b> (For models with two or more devices only)	You have started the intercom process, and need to enter the number of the device you wish to call.
<b>Line in use</b>	An extension telephone on the same line or one of the handsets is in use.
<b>List empty</b>	There are no directory entries or call block list entries.
<b>Low battery</b>	The battery needs to be charged.
<b>Microphone on</b>	Mute is off so the other party can hear your voice.
<b>Muted</b>	The microphone is off.
<b>New voicemail</b>	There are new voicemail messages from your telephone service provider.
<b>No battery</b>	The handset in the telephone base or charger does not have a battery properly installed.
<b>No line</b>	There is no telephone line connected.
<b>No message</b>	There are no messages in the answering system.
<b>Not available</b>	Someone else is already using the directory, caller ID log or answering system.

## Handset display screen messages

<b>Number repeated</b>	The telephone number you have entered is already stored in the directory.
<b>Out of range or no pwr at base</b>	The handset has lost communication with the telephone base.
<b>Outside call</b>	You switched to an external call during an intercom call.
<b>** Paging **</b>	The telephone base is paging all handsets.
<b>Phone</b>	The handset is on a call.
<b>Put in charger</b>	The battery is very low. The handset should be placed in the telephone base or charger.
<b>Quiet mode off</b>	The quiet mode is turned off.
<b>Quiet mode on</b>	The quiet mode is turned on.
<b>Rec mem low</b>	The answering system has less than 3 minutes to record.
<b>Rec mem full</b>	The answering system memory is full.
<b>Ringer muted</b>	The ringer is muted temporarily during an incoming call.
<b>Setting Ans sys</b>	The handset is playing voice guide.
<b>Speaker</b>	The handset speakerphone is in use.
<b>To register HS... ...see manual</b>	The handset is not registered to any telephone base.
<b>To screen call press [SELECT]</b>	The system is recording a message. Press <b>MENU/SELECT</b> to screen a call on a handset.
<b>Unable to call</b>	<ul style="list-style-type: none"> <li>▶ Intercom failed.</li> <li>▶ You try to join a call when there are already four handsets on that call.</li> <li>▶ You try to make a call when the handset is out of range.</li> </ul>
<b>XX missed calls</b>	There are XX new calls in the caller ID log.
<b>XX new messages</b>	There are XX new messages in the answering system.

## Troubleshooting

If you have difficulty with your telephone, please try the following suggestions. For customer service, or to purchase accessories or replacement parts, visit our website at <https://telephones.att.com>, or call **1 (800) 222-3111**. In Canada, dial **1 (866) 288-4268**.

### **My telephone doesn't work at all.**

- ▶ Make sure the power cord is securely plugged in.
- ▶ Make sure that the battery connector is securely plugged into the cordless handset.
- ▶ Make sure the telephone line cord is securely and firmly plugged into the telephone base and the telephone wall jack.
- ▶ Charge the battery in the cordless handset for at least 16 hours. For optimum daily performance, return the cordless handset to the telephone base or charger when not in use.
- ▶ If the battery is depleted, charge the handset for at least 30 minutes before you use it. Refer to **Battery charging** on page 10 for details.
- ▶ Reset the telephone base. Unplug the electrical power. Wait for approximately 15 seconds, then plug it back in. Allow up to one minute for the cordless handset and telephone base to reset.
- ▶ You may need to purchase a new battery. Please refer to **Battery installation** on pages 8-10.

### **The display shows No line. I cannot get a dial tone.**

- ▶ First try all of the suggestions mentioned above.
- ▶ If the previous suggestions do not work, disconnect the telephone line cord from your telephone and connect the telephone line cord to another telephone.
  - ▶ If there is no dial tone on that other telephone either, your telephone line cord may be defective. Install a new telephone line cord.
  - ▶ If changing the telephone line cord does not help, the wall jack (or the wiring to this wall jack) may be defective. Try using a different wall jack in your home to connect your EL52119/EL52219/EL52319 telephone, or contact your telephone service provider (charges may apply).

## Troubleshooting

### **I cannot dial out.**

- ▶ First try all the suggestions in the item **The display shows No line. I cannot get a dial tone.**
- ▶ Make sure you have a dial tone before dialing. The cordless handset may take a second or two to find the telephone base and produce a dial tone. This is normal. Wait an extra second before dialing.
- ▶ Check that all the telephones connected to the same telephone line are hung up.
- ▶ Make sure to set the dial mode to the correct setting (pulse dialing or tone dialing) for the service in your area.
- ▶ Eliminate any background noise. Noise from a television, radio or other appliances may cause the telephone not to dial out properly. If you cannot eliminate the background noise, first try muting the cordless handset before dialing, or dialing from another room with less background noise.
- ▶ If other telephones in your home are having the same problem, the problem is in your wiring or telephone service. Contact your telephone service provider (charges may apply).

### **My cordless handset isn't performing normally.**

- ▶ Make sure the power cord is securely plugged into the telephone base. Plug the power adapter into a different, working electrical outlet not controlled by a wall switch.
- ▶ Move the cordless handset closer to the telephone base. You might have moved out of range.
- ▶ Reset the telephone base. Unplug the electrical power. Wait for 15 seconds, then plug it back in. Allow up to one minute for the cordless handset and telephone base to reset.
- ▶ Other electronic products such as HAM radios and other DECT phones, can cause interference to your cordless telephone. Try installing your telephone as far away as possible from these types of electronic devices.

## Troubleshooting

### **Out of range or no pwr at base appears on my cordless handset.**

- ▶ Ensure that the telephone base is powered on.
- ▶ Place the cordless handset in the telephone base for one minute to allow the cordless handset and base to synchronize.
- ▶ Move the cordless handset closer to the telephone base. You might have moved out of range.
- ▶ Reset the telephone base. Unplug the electrical power. Wait for 15 seconds, then plug it back in. Allow up to one minute for the cordless handset and telephone base to reset.
- ▶ Other electronic products such as HAM radios and other DECT phones, can cause interference to your cordless telephone. Try installing your telephone as far away as possible from these types of electronic devices.

### **The batteries do not hold a charge.**

- ▶ If the cordless handset is in the telephone base or charger and the charge light does not come on, refer to the item **The charge light is off** on this page.
- ▶ Charge the battery in the cordless handset for at least 16 hours. For optimum daily performance, return the cordless handset to the telephone base or charger when not in use.
- ▶ If the battery is depleted, it may take approximately 30 minutes to charge the handset before it shows **Low battery**. Refer to **Battery charging** on page 10 for details.
- ▶ You may need to purchase a new battery. Please refer to **Battery installation** on pages 8-10.

### **The charge light is off.**

- ▶ Make sure the power cord is plugged in correctly and securely.
- ▶ Make sure the battery is installed correctly in the handset. Follow the instruction in **Battery installation** on pages 8-10 to install the battery.
- ▶ Unplug the electrical power. Wait for 15 seconds, then plug it back in. Allow up to one minute for the cordless handset and telephone base to reset.
- ▶ Clean the cordless handset and telephone base charging contacts each month using a pencil eraser or cloth.

## Troubleshooting

### **I get noise, static, or weak signals even when I'm near the telephone base.**

- ▶ If you subscribe to high-speed Internet service (DSL - digital subscriber line) through your telephone line, you must install a DSL filter between the telephone line cord and the telephone wall jack (see **Telephone base and charger installation** on page 7). The filter prevents noise and caller ID problems caused by DSL interference. Please contact your DSL service provider for more information about DSL filters.
- ▶ Other electronic products such as HAM radios and other DECT phones, can cause interference to your cordless telephone. Try installing your telephone as far away as possible from these types of electronic devices.
- ▶ Do not install this telephone near a microwave oven or on the same electrical outlet. You may experience decreased performance while the microwave oven is operating.
- ▶ If your telephone is plugged in with a modem or a surge protector, plug the telephone (or modem/surge protector) into a different location. If this doesn't solve the problem, relocate your telephone or modem farther apart from one another, or use a different surge protector.
- ▶ Relocate your telephone to a higher location. The telephone will likely have better reception when installed in a high area.
- ▶ If the other telephones in your home are having the same problem, the problem is in your wiring or telephone service. Contact your telephone service provider (charges may apply).

### **I experience poor sound quality when using the speakerphone.**

- ▶ For increased sound quality while using the speakerphone, place the handset on a flat surface with the dial pad facing up.
- ▶ When using a speakerphone, controlling background noise in your environment is essential. While you are listening to your party, press **MUTE** to temporarily turn your microphone off. When it is your turn to speak, remember to press **MUTE** again to turn the microphone on.
- ▶ Excessive background noise will cause a speakerphone to fade in and out. Try controlling the background noise by turning off any audio devices near the speakerphone. Also, try to avoid interrupting the person at the other end of the conversation while they are speaking. If background noise cannot be controlled, you should terminate speakerphone operation and return to normal handset mode.

## Troubleshooting

### **I hear other calls while using my telephone.**

- ▶ Disconnect the telephone base from the telephone wall jack, and plug in a different telephone. If you still hear other calls, the problem is probably in your wiring or telephone service. Call your telephone service provider (charges may apply).

### **My calls cut in and out while I'm using my cordless handset.**

- ▶ Other electronic products such as HAM radios and other DECT phones, can cause interference to your cordless telephone. Try installing your telephone as far away as possible from these types of electronic devices.
- ▶ Move the handset closer to the base. The operating range may vary with environmental conditions and time of use. There may be places within your environment that a cordless telephone will not work well. If the problem only occurs in certain areas of your environment, you can conclude that there is nothing wrong with the telephone.
- ▶ Do not install this telephone near a microwave oven or on the same electrical outlet. You may experience decreased performance while the microwave oven is operating.
- ▶ If your telephone is plugged in with a modem or surge protector, plug the telephone (or modem/surge protector) into a different location. If this doesn't solve the problem, relocate your telephone or modem farther apart from one another, or use a different surge protector.
- ▶ Relocate your telephone base to a higher location. The telephone will have better reception when installed in a high area.
- ▶ If the other telephones in your home are having the same problem, the problem is in your wiring or telephone service. Contact your telephone service provider (charges may apply).
- ▶ If you subscribe to high-speed Internet service (DSL - digital subscriber line) through your telephone line, you must install a DSL filter between the telephone line cord and the telephone wall jack (see **Telephone base and charger installation** on page 7). The filter prevents noise and caller ID problems caused by DSL interference. Please contact your DSL service provider for more information about DSL filters.



## Troubleshooting

### **My cordless handset does not ring when I receive a call.**

- ▶ Make sure that the ringer is not turned off. Refer to **Ringer volume** on page 15.
- ▶ Make sure the telephone line cord is plugged securely into the telephone base and the telephone wall jack. Make sure the power cord is securely plugged in.
- ▶ The cordless handset may be too far from the telephone base.
- ▶ Charge the battery in the cordless handset for at least 16 hours. For optimum daily performance, return the cordless handset to the telephone base or charger when not in use.
- ▶ You may have too many extension telephones on your telephone line to allow all of them to ring simultaneously. Try unplugging one telephone at a time until the telephones start ringing.
- ▶ The layout of your home or office might be limiting the operating range. Try moving the telephone base to another location, preferably on an upper floor.
- ▶ If the other telephones in your home are having the same problem, the problem is in your wiring or telephone service. Contact your telephone service provider (charges may apply).
- ▶ Test a working telephone at the telephone wall jack. If another telephone has the same problem, the problem is the telephone wall jack. Contact your telephone service provider (charges may apply).
- ▶ Other electronic products such as HAM radios and other DECT phones, can cause interference to your cordless telephone. Try installing your telephone as far away as possible from these types of electronic devices.
- ▶ Completely remove and then replace the battery. Place the cordless handset in the telephone base. Wait for the cordless handset to reestablish its connection with the telephone base. Allow up to one minute for this to take place.
- ▶ Your telephone line cord might be defective. Try installing a new telephone line cord.

## Troubleshooting


### **My caller ID isn't working.**

- ▶ Caller ID is a subscription service. You must subscribe to this service from your telephone service provider for this feature to work on your telephone.
- ▶ Your caller must be calling from an area that supports caller ID.
- ▶ Both your and your caller's telephone service providers must use caller ID compatible equipment.
- ▶ Make sure the home area code is set correctly in the telephone (see **Home area code** on page 19).
- ▶ If you subscribe to high-speed Internet service (DSL - digital subscriber line) through your telephone line, you must install a DSL filter between the telephone line and the telephone wall jack (see **Telephone base and charger installation** on page 7). The filter prevents noise and caller ID problems caused by DSL interference. Please contact your DSL service provider for more information about DSL filters.

### **My telephone does not receive caller ID when on a call.**

- ▶ Make sure you subscribe to caller ID with call waiting features provided by your telephone service provider. Caller ID features work only if both you and the caller are in areas offering caller ID service, and if both telephone service providers use compatible equipment.

### **A icon shows on the display and I don't know why.**

- ▶ Your telephone has voicemail indication that is separate from the built-in answering system. If  appears on the display, then your telephone has received a signal from your telephone service provider that you have a voicemail message waiting for you to retrieve from your telephone service provider. Contact your telephone service provider for more information on how to access your voicemail.

### **I cannot retrieve voicemail messages.**

- ▶ Your telephone has both a built-in answering system and voicemail indication. They are independent features and each alerts you to new messages differently (see **Answering system and voicemail indicators** on page 61). If you subscribe to voicemail service from your telephone service provider (charges may apply), contact your telephone service provider for more information on how to access your voicemail.

## Troubleshooting

### Incomplete messages.

- ▶ If a caller leaves a very long message, part of it may be lost when the system disconnects the call after the maximum recording time you have set (see **Message alert tone** on page 60).
- ▶ If the caller pauses for longer than 7 seconds, the answering system stops recording and disconnects the call.
- ▶ If the answering system's memory becomes full during a message, the answering system stops recording and disconnects the call.
- ▶ If the caller's voice is very soft, the answering system may stop recording and disconnects the call.
- ▶ If someone picks up the call at a telephone on the same line during a message, the answering system stops recording and disconnects the call. Part of the message may be lost.

### Difficulty hearing messages.

- ▶ Press **VOL ▲** or **VOL ▼** to adjust the speaker volume on the telephone base.
- ▶ Press **▲DIR/VOLUME** to increase the message playback volume on a handset.

### The answering system does not answer after correct number of rings.

- ▶ Make sure the answering system is on. When the answering system is on, **ANS ON** should show on the handset and the **ANS ON** light is lit on the telephone base (see **Answer on/off** on page 55).
- ▶ If toll saver is selected, the number of rings changes to 2 when there are new messages (see **Number of rings** on page 58).
- ▶ If the memory is full or the answering system is off, the answering system answers after 10 rings.
- ▶ In some cases, the answering system is affected by the ringing system used by the telephone service provider.
- ▶ If you subscribe to voicemail service, change the number of rings so that your answering system answers before your voicemail (see **Answering system and voicemail indicators** on page 61). To determine how many rings activate your voicemail, contact your telephone service provider.
- ▶ If there is a fax machine connected to the same telephone line, try disconnecting the fax machine. If that solves the problem, consult your fax machine documentation for information on compatibility with answering systems.

## Troubleshooting

### **The answering system announces “Time and date not set.”**

- ▶ You need to reset the date and time (see **Set date/time** on page 18).

### **The answering system does not respond to the remote commands.**

- ▶ Make sure to enter your remote access code correctly (see **Remote access code** on page 59).
- ▶ Make sure you are calling from a touch-tone telephone. When you dial a number, you should hear tones. If you hear clicks, the telephone is not a touch-tone telephone and cannot activate the answering system.
- ▶ The answering system may not detect the remote access code while your announcement is playing. Try waiting until the announcement is over before entering the code.
- ▶ There may be interference on the telephone line you are using. Press dialing keys firmly.

### **The answering system does not record messages.**

- ▶ Make sure the answering system is on (see **Answer on/off** on page 55).
- ▶ Make sure the memory of the answering system is not full. When the answering machine memory is full, it does not record new messages until some old messages are deleted.
- ▶ If you subscribe to voicemail service, change the number of rings so that your answering system answers before your voicemail (see **Answering system and voicemail indicators** on page 61). To determine how many rings activate your voicemail, contact your telephone service provider.
- ▶ If there is a fax machine connected to the same telephone line, try disconnecting the fax machine. If that solves the problem, consult your fax machine documentation for information on compatibility with answering systems.

### **Announcement is not clear.**

- ▶ When you record your announcement, make sure you speak in a normal tone of voice, toward the microphone on the handset.
- ▶ Make sure there is no background noise (TV, music, etc.) while recording.

## Troubleshooting

### **I subscribe to a nontraditional telephone service that uses my computer to establish connections, and my telephone doesn't work.**

- ▶ Make sure your computer is powered on.
- ▶ Make sure your Internet connection is working properly.
- ▶ Make sure that the software is installed and running for your nontraditional telephone service.
- ▶ Make sure to plug your USB port adapter into a dedicated USB port on your computer. Do not plug into a multiple port USB hub (USB splitter) that is not powered.
- ▶ In a few rare instances, the USB port on your computer may not have enough power. In these instances, try using a USB hub with its own external power supply.
- ▶ If you are using a firewall, it may prevent access to your nontraditional telephone service. Contact your service provider for more information.

### **I've set my LCD language to Spanish or French and I don't know how to change it back to English.**

- ▶ Press **MENU/SELECT** when the handset is idle. Enter **\*364#** using the dialing keys. You hear a confirmation tone.

### **Common cure for electronic equipment:**

If the telephone is not responding normally, try resetting the telephone. Do the following in the order listed.

1. Disconnect the power to the telephone base.
2. Disconnect the cordless handset battery, and spare battery, if applicable.
3. Wait a few minutes.
4. Connect power to the telephone base.
5. Completely remove and then replace the battery. Place the cordless handset into the telephone base.
6. Wait for the cordless handset to reestablish its connection with the telephone base. Allow up to one minute for this to take place.

## Maintenance

### Taking care of your telephone

- ▶ Your cordless telephone contains sophisticated electronic parts, so it must be treated with care.
- ▶ Avoid rough treatment.
- ▶ Place the handset down gently.
- ▶ Save the original packing materials to protect your telephone if you ever need to ship it.

### Avoid water

- ▶ Your telephone can be damaged if it gets wet. Do not use the handset in the rain, or handle it with wet hands. Do not install the telephone base near a sink, bathtub or shower.

### Electrical storms

- ▶ Electrical storms can sometimes cause power surges harmful to electronic equipment. For your own safety, take caution when using electric appliances during storms.

### Cleaning your telephone

- ▶ Your telephone has durable plastic casing that should retain its luster for many years. Clean it only with a soft cloth slightly dampened with water or mild soap.
- ▶ Do not use excess water or cleaning solvents of any kind.

Remember that electrical appliances can cause serious injury if used when you are wet or standing in water. If the telephone base should fall into water, **DO NOT RETRIEVE IT UNTIL YOU UNPLUG THE POWER CORD AND TELEPHONE LINE CORDS FROM THE WALL.** Pull the telephone out by the unplugged cords.

## Important safety information



This symbol is to alert you to important operating or servicing instructions that may appear in this user's manual. Always follow basic safety precautions when using this product to reduce the risk of injury, fire, or electric shock.

### Safety information

---

- ▶ **Read and understand all instructions in the user's manual. Observe all markings on the product.**
- ▶ **Avoid using a telephone during a thunderstorm.** There might be a slight chance of electric shock from lightning.
- ▶ **Do not use a telephone in the vicinity of a gas leak.** Under certain circumstances, a spark may be created when the adapter is plugged into the power outlet, or when the handset is replaced in its cradle. This is a common event associated with the closing of any electrical circuit. In an inadequately ventilated environment, the user should not plug the phone into a power outlet, nor put a charged handset into the cradle where there are concentrations of flammable or flame-supporting gases. A spark in such an environment could create a fire or explosion. Such environments might include: medical use of oxygen without adequate ventilation; industrial gases (cleaning solvents; gasoline vapors; etc.); a leak of natural gas; etc.
- ▶ **Do not use this product near water or when you are wet.** For example, do not use it in a wet basement or shower, nor next to a swimming pool, bathtub, kitchen sink, and laundry tub. Do not use liquids or aerosol sprays for cleaning. If the product comes in contact with any liquids, unplug any line or power cord immediately. Do not plug the product back in until it has dried thoroughly.
- ▶ **Install this product in a protected location** where no one can trip over any line or power cords. Protect cords from damage or abrasion.
- ▶ **If this product does not operate normally, read Troubleshooting on pages 78-87 in this user's manual.** If you cannot solve the problem, or if the product is damaged, refer to **Limited warranty** on pages 95-97. Do not open this product except as may be directed in your user's manual. Opening the product or reassembling it incorrectly may expose you to hazardous voltages or other risks.
- ▶ **Replace batteries only as described in Battery installation and charging on pages 8-10 in your user's manual.** Do not burn or puncture batteries — they contain caustic chemicals.
- ▶ **The power adapters are intended to be correctly oriented in a vertical or floor mount position.** The prongs are not designed to hold the plug in place if they are plugged into a ceiling or an under-the-table or cabinet outlet.
- ▶ For pluggable equipment, the socket-outlet shall be installed near the equipment and shall be easily accessible.

## Important safety information



### CAUTIONS:

- ▶ Use only the power adapter provided with this product. To obtain a replacement, visit our website at <https://telephones.att.com> or call **1 (800) 222-3111**. In Canada, dial **1 (866) 288-4268**.
- ▶ Use only the supplied rechargeable battery or replacement battery (model BT162342/BT262342). To order, visit our website at <https://telephones.att.com> or call **1 (800) 222-3111**. In Canada, dial **1 (866) 288-4268**.
- ▶ To prevent risk of fire or battery explosion, replace with the correct battery type. Dispose of used batteries according to the instructions.

### Especially about cordless telephones

---

- ▶ **Privacy:** The same features that make a cordless telephone convenient create some limitations. Telephone calls are transmitted between the telephone base and the handset by radio waves, so there is a possibility that your cordless telephone conversations could be intercepted by radio receiving equipment within range of the cordless handset. **For this reason, you should not think of cordless telephone conversations as being as private as those on corded telephones.**
- ▶ **Electrical power:** The telephone base of this cordless telephone must be connected to a working electrical outlet which is not controlled by a wall switch. **Calls cannot be made from the handset if the telephone base is unplugged, switched off or if the electrical power is interrupted.**
- ▶ **Potential TV interference:** Some cordless telephones operate at frequencies that may cause interference to TVs and VCRs. To minimize or prevent such interference, do not place the telephone base of the cordless telephone near or on top of a TV or VCR. If interference is experienced, moving the cordless telephone farther away from the TV or VCR will often reduce or eliminate the interference.
- ▶ **Rechargeable batteries:** This product contains nickel-metal hydride rechargeable batteries. Exercise care in handling batteries in order not to create a short circuit with conductive material such as rings, bracelets, and keys. The battery or conductor may overheat and cause harm. Observe proper polarity between the battery and the battery charger.
- ▶ **Nickel-metal hydride rechargeable batteries:** Dispose of these batteries in a safe manner. Do not burn or puncture. Like other batteries of this type, if burned or punctured, they could release caustic material which could cause injury.



The RBRC® Seal means that the manufacturer is voluntarily participating in an industry program to collect and recycle nickel-metal hydride rechargeable batteries when taken out of service within the United States. These batteries may be taken to a participating local retailer of replacement batteries or recycling center. You may call 1-800-8-BATTERY® for locations accepting spent Ni-MH batteries.

RBRC® and 1-800-8-BATTERY® are registered trademarks of the Rechargeable Battery Recycling Corporation.



## Important safety information

### **Precautions for users of implanted cardiac pacemakers**

---

Cardiac pacemakers (applies only to digital cordless telephones): Wireless Technology Research, LLC (WTR), an independent research entity, led a multidisciplinary evaluation of the interference between portable wireless telephones and implanted cardiac pacemakers. Supported by the U.S. Food and Drug Administration, WTR recommends to physicians that:

#### **Pacemaker patients**

- ▶ Should keep wireless telephones at least six inches from the pacemaker.
- ▶ Should NOT place wireless telephones directly over the pacemaker, such as in a breast pocket, when it is turned ON.
- ▶ Should use the wireless telephone at the ear opposite the pacemaker.

WTR's evaluation did not identify any risk to bystanders with pacemakers from other persons using wireless telephones.

### **ECO mode**

---

This power conserving technology reduces power consumption for optimal battery performance. The ECO mode activates automatically whenever the handset is synchronized with the telephone base.

### **Especially about telephone answering systems**

---

**Two-way recording:** This unit does not sound warning beeps to inform the other party that the call is being recorded. To ensure that you are in compliance with any federal or state regulations regarding recording a telephone call, you should start the recording process and then inform the other party that you are recording the conversation.

**SAVE THESE INSTRUCTIONS**

## FCC Part 68 and ACTA

This equipment complies with Part 68 of the FCC rules and with technical requirements adopted by the Administrative Council for Terminal Attachments (ACTA). The label on the back or bottom of this equipment contains, among other things, a product identifier in the format US:AAAEQ##TXXXX. This identifier must be provided to your telephone service provider upon request.

The plug and jack used to connect this equipment to premises wiring and the telephone network must comply with the applicable Part 68 rules and technical requirements adopted by ACTA. A compliant telephone cord and modular plug is provided with this product. It is designed to be connected to a compatible modular jack that is also compliant. An RJ11 jack should normally be used for connecting to a single line and an RJ14 jack for two lines. See Installation Instructions in the user's manual.

The Ringer Equivalence Number (REN) is used to determine how many devices you may connect to your telephone line and still have them ring when you are called. The REN for this product is encoded as the 6th and 7th characters following the US: in the product identifier (e.g., if ## is 03, the REN is 0.3). In most, but not all areas, the sum of all RENs should be five (5.0) or less. For more information, please contact your telephone service provider.

This equipment may not be used with Party Lines. If you have specially wired alarm dialing equipment connected to your telephone line, ensure the connection of this equipment does not disable your alarm equipment. If you have questions about what will disable the alarm equipment, consult your telephone service provider or a qualified installer.

If this equipment is malfunctioning, it must be unplugged from the modular jack until the problem has been corrected. Repairs to this telephone equipment can only be made by the manufacturer or its authorized agents. For repair procedures, follow the instructions outlined under the Limited Warranty.

If this equipment is causing harm to the telephone network, the telephone service provider may temporarily discontinue your telephone service. The telephone service provider is required to notify you before interrupting service. If advance notice is not practical, you will be notified as soon as possible. You will be given the opportunity to correct the problem and the telephone service provider is required to inform you of your right to file a complaint with the FCC. Your telephone service provider may make changes in its facilities, equipment, operation, or procedures that could affect the proper functioning of this product. The telephone service provider is required to notify you if such changes are planned.

If this product is equipped with a corded or cordless handset, it is hearing aid compatible.

If this product has memory dialing locations, you may choose to store emergency telephone numbers (e.g., police, fire, medical) in these locations. If you do store or test emergency numbers, please:

- ▶ Remain on the line and briefly explain the reason for the call before hanging up.
- ▶ Perform such activities in off-peak hours, such as early morning or late evening.

## FCC Part 68 and ACTA

### Industry Canada

This device contains licence-exempt transmitter(s)/receiver(s) that comply with Innovation, Science and Economic Development Canada's licence-exempt RSS(s). Operation is subject to the following two conditions:

- (1) This device may not cause interference.
- (2) This device must accept any interference, including interference that may cause undesired operation of the device.

Privacy of communications may not be ensured when using this telephone.

The term "IC:" before the certification/registration number only signifies that the Industry Canada technical specifications were met.

The Ringer Equivalence Number (REN) for this terminal equipment is 1.0. The REN indicates the maximum number of devices allowed to be connected to a telephone interface. The termination of an interface may consist of any combination of devices subject only to the requirement that the sum of the RENs of all the devices not exceed five.

This product meets the applicable Innovation, Science and Economic Development Canada technical specifications.

## FCC Part 15

NOTE: This equipment has been tested and found to comply with the requirements for a Class B digital device under Part 15 of the Federal Communications Commission (FCC) rules.

These requirements are intended to provide reasonable protection against harmful interference in a residential installation. This equipment generates, uses and can radiate radio frequency energy and, if not installed and used in accordance with the instructions, may cause harmful interference to radio communications. However, there is no guarantee that interference will not occur in a particular installation.

If this equipment does cause harmful interference to radio or television reception, which can be determined by turning the equipment off and on, the user is encouraged to try to correct the interference by one or more of the following measures:

- ▶ Reorient or relocate the receiving antenna.
- ▶ Increase the separation between the equipment and receiver.
- ▶ Connect the equipment into an outlet on a circuit different from that to which the receiver is connected.
- ▶ Consult the dealer or an experienced radio/TV technician for help.

WARNING: Changes or modifications to this equipment not expressly approved by the party responsible for compliance could void the user's authority to operate the equipment.

This device complies with Part 15 of the FCC rules. Operation is subject to the following two conditions: (1) this device may not cause harmful interference, and (2) this device must accept any interference received, including interference that may cause undesired operation. Privacy of communications may not be ensured when using this telephone.

To ensure safety of users, the FCC has established criteria for the amount of radio frequency energy that can be safely absorbed by a user or bystander according to the intended usage of the product. This product has been tested and found to comply with the FCC criteria. The handset may be safely held against the ear of the user. The telephone base shall be installed and used such that parts of the user's body other than the hands are maintained at a distance of approximately 20cm (8 inches) or more.

This Class B digital apparatus complies with Canadian requirement:

CAN ICES-3 (B)/NMB-3(B)

# California Energy Commission battery charging testing instructions

This telephone is set up to comply with the energy-conserving standards right out of the box. These instructions are intended for California Energy Commission (CEC) compliance testing only. When the CEC battery charging testing mode is activated, all telephone functions, except battery charging, will be disabled.

## To activate the CEC battery charging testing mode:

1. Unplug the telephone base power adapter from the power outlet. Make sure all handsets are inserted with charged batteries before proceeding.
2. While you press and hold **FIND HS**, plug the telephone base power adapter back to the power outlet.
3. After about 20 seconds, when the **IN USE** light starts flashing, release **FIND HS** and then press it again within two seconds.



When the phone successfully enters the CEC battery charging testing mode, the **IN USE** light turns off and all handsets display **To register HS...** and **...see manual**, alternately.

When the phone fails to enter this mode, repeat all the steps mentioned above.

## To deactivate the CEC battery charging testing mode:

1. Unplug the telephone base power adapter from the power outlet, then plug it back in. The telephone base is powered up as normal.
2. Register your handsets back to the telephone base. See page 72 for handset registration instructions.



## Limited warranty

The AT&T brand is used under license - any repair, replacement or warranty service, and all questions about this product should be directed to our website at

**<https://telephones.att.com>** or call **1 (800) 222-3111**. In Canada, dial **1 (866) 288-4268**.

### **1. What does this limited warranty cover?**

The manufacturer of this AT&T branded product warrants to the holder of a valid proof of purchase (“CONSUMER” or “you”) that the product and all accessories provided in the sales package (“PRODUCT”) are free from defects in material and workmanship, pursuant to the following terms and conditions, when installed and used normally and in accordance with the PRODUCT operating instructions. This limited warranty extends only to the CONSUMER for products purchased and used in the United States of America and Canada.

### **2. What will be done if the PRODUCT is not free from defects in materials and workmanship during the limited warranty period (“materially defective PRODUCT”)?**

During the limited warranty period, the manufacturer’s authorized service representative repairs or replaces at the manufacturer’s option, without charge, a materially defective PRODUCT. If the manufacturer repairs the PRODUCT, they may use new or refurbished replacement parts. If the manufacturer chooses to replace the PRODUCT, they may replace it with a new or refurbished PRODUCT of the same or similar design. The manufacturer retains the defective parts, modules, or equipment. Repair or replacement of the PRODUCT, at the manufacturer’s option, is your exclusive remedy. The manufacturer returns the repaired or replacement products to you in working condition. You should expect the repair or replacement to take approximately 30 days.

### **3. How long is the limited warranty period?**

The limited warranty period for the PRODUCT extends for ONE (1) YEAR from the date of purchase. If the manufacturer repairs or replaces a materially defective PRODUCT under the terms of this limited warranty, this limited warranty also applies to repaired or replacement PRODUCT for a period of either (a) 90 days from the date the repaired or replacement PRODUCT is shipped to you or (b) the time remaining on the original one-year limited warranty; whichever is longer.

## Limited warranty

### 4. What is not covered by this limited warranty?

This limited warranty does not cover:

- ▶ PRODUCT that has been subjected to misuse, accident, shipping or other physical damage, improper installation, abnormal operation or handling, neglect, inundation, fire, water, or other liquid intrusion; or
- ▶ PRODUCT that has been damaged due to repair, alteration, or modification by anyone other than an authorized service representative of the manufacturer; or
- ▶ PRODUCT to the extent that the problem experienced is caused by signal conditions, network reliability or cable or antenna systems; or
- ▶ PRODUCT to the extent that the problem is caused by use with non-AT&T accessories; or
- ▶ PRODUCT whose warranty/quality stickers, PRODUCT serial number plates or electronic serial numbers have been removed, altered or rendered illegible; or
- ▶ PRODUCT purchased, used, serviced, or shipped for repair from outside the United States of America or Canada, or used for commercial or institutional purposes (including but not limited to products used for rental purposes); or
- ▶ PRODUCT returned without a valid proof of purchase (see item 6); or
- ▶ Charges for installation or setup, adjustment of customer controls, and installation or repair of systems outside the unit.

### 5. How do you get warranty service?

To obtain warranty service in the United States of America, visit

**<https://telephones.att.com>** or call **1 (800) 222-3111**. In Canada, dial **1 (866) 288-4268**.

NOTE: Before calling for service, please review the user's manual. A check of the PRODUCT's controls and features might save you a service call.

Except as provided by applicable law, you assume the risk of loss or damage during transit and transportation and are responsible for delivery or handling charges incurred in the transport of the PRODUCT(s) to the service location. The manufacturer will return repaired or replaced PRODUCT under this limited warranty. Transportation, delivery or handling charges are prepaid. The manufacturer assumes no risk for damage or loss of the PRODUCT in transit. If the PRODUCT failure is not covered by this limited warranty, or proof of purchase does not meet the terms of this limited warranty, the manufacturer notifies you and requests that you authorize the cost of repair prior to any further repair activity. You must pay for the cost of repair and return shipping costs for the repair of products that are not covered by this limited warranty.

## Limited warranty

### 6. What must you return with the PRODUCT to get warranty service?

You must:

- a. Return the entire original package and contents including the PRODUCT to the service location along with a description of the malfunction or difficulty; and
- b. Include a “valid proof of purchase” (sales receipt) identifying the PRODUCT purchased (PRODUCT model) and the date of purchase or receipt; and
- c. Provide your name, complete and correct mailing address, and telephone number.

### 7. Other limitations

This warranty is the complete and exclusive agreement between you and the manufacturer of this AT&T branded PRODUCT. It supersedes all other written or oral communications related to this PRODUCT. The manufacturer provides no other warranties for this PRODUCT. The warranty exclusively describes all of the manufacturer’s responsibilities regarding the PRODUCT. There are no other express warranties. No one is authorized to make modifications to this limited warranty and you should not rely on any such modification.

State/Provincial Law Rights: This warranty gives you specific legal rights, and you might also have other rights that vary from state to state or province to province.

Limitations: Implied warranties, including those of fitness for a particular purpose and merchantability (an unwritten warranty that the PRODUCT is fit for ordinary use) are limited to one year from date of purchase. Some states/provinces do not allow limitations on how long an implied warranty lasts, so the above limitation might not apply to you. In no event shall the manufacturer be liable for any indirect, special, incidental, consequential, or similar damages (including, but not limited to lost profits or revenue, inability to use the PRODUCT or other associated equipment, the cost of substitute equipment, and claims by third parties) resulting from the use of this PRODUCT. Some states/provinces do not allow the exclusion or limitation of incidental or consequential damages, so the above limitation or exclusion might not apply to you.

**Please retain your original sales receipt as proof of purchase.**

## Technical specifications

RF frequency band	1921.536MHz — 1928.448MHz
Channels	5
Telephone base adapter voltage (AC voltage, 60Hz)	96 — 130Vrms
Telephone base voltage (DC adapter output)	DC6V @ 400mA
Handset voltage	2.4 - 3.2VDC
Charger voltage (AC adapter output)	DC6V @ 400mA
Operating times*	Talk time (handset): up to 7 hours Talk time (speakerphone): up to 3.5 hours Standby: up to 5 days

\*Operating time varies depending on your actual use and the age of battery.

### **DECT 6.0 digital technology**

---

The AT&T DECT 6.0 products offer unsurpassed range performance and sound clarity. This is achieved through a unique antenna design and advances in noise-filtering technology. An independent laboratory has confirmed that AT&T DECT 6.0 products perform up to 45% better in range competitions against similarly equipped phones of the leading competition. Now, calls can be taken in the basement, backyard and garage with exceptional sound quality.

### **Telephone operating range**

---

This cordless telephone operates within the maximum power allowed by the Federal Communications Commission (FCC). Even so, this handset and telephone base can communicate over a certain distance — which can vary with the locations of the telephone base and handset, the weather, and the construction of your home or office.

### **Simulated full-duplex handset speakerphone**

---

The simulated full-duplex speakerphone on your handset allows both ends of a call to speak and be heard at the same time. Optimal performance is subject to external factors and individual usage.



## Index

### A

---

- Add a handset 72
- Alert tones 75
- Announcement 53–54
- Answer a call 23
- Answer an incoming call
  - during an intercom call 31
- Answering system 53–71

### B

---

- Battery charging 10
- Battery installation 8–9

### C

---

- Call block 48–52
  - delete entries 52
  - edit entries 51
  - mute rings 52
  - new entries 49
  - review entries 50
- Call intercept 64
- Call screening 57, 63
- Call transfer 32
- Call waiting 26
- Caller ID 41–47
  - add entries to phone directory 46
  - delete entries 45
  - dial entries 45
  - review entries 43
- Caller ID information missing 47
- Caller ID log 42
- Chain dialing 27
- Character chart 35
- Charger installation 7

### D

---

- Date and time 18
- Delete messages 67
- Deregister handsets 73
- Dialing options 44
- Directory 33–40
  - delete entries 39
  - dial entries 39
  - edit entries 40
  - new entries 34–36
  - review entries 37–38
- Directory memory capacity 33
- Display screen messages 76–77

### E

---

- End a call 23

### F

---

- Find handset 29
- Flash 26

### I

---

- Important safety information 89–91
- Intercom 30–32

### K

---

- Key tone 17

### L

---

- Language 16
- Limited warranty 95–97

## Index

### M

---

Maintenance 88  
Make a call 22  
Memo 68  
Menu 14  
Message alert tone 60, 64  
Message capacity 62  
Message playback 65–67  
Message window displays 69  
Missed (new) calls indicator 43  
Mute 26

### O

---

On-hook dialing 22

### P

---

Predialing 22

### Q

---

Quick reference guide 2–5  
Quiet mode 20

### R

---

Recording time 62  
Redial 24–25  
Register a handset 72  
Remote access 70–71  
Remote access code 59  
Remotely commands 70  
Repeat messages 66  
Ringer 15  
Ringer silencing 22  
Ringer tone 15

### S

---

Safety information 89–91  
Screen icons 74  
Screen messages 76–77  
Skip messages 66  
Speakerphone 23

### T

---

Tabletop installation 13  
Technical specifications 98  
Telephone installation 7  
Temporary ringer silencing 22  
Temporary tone dialing 27  
Time 18  
Troubleshooting 78–87

### V

---

Voice guide 56  
Voice prompts 62  
Voicemail 16, 17  
Volume 15, 21, 26

### W

---

Wall-mount installation 11–13  
Warranty 95–97

# Remote access wallet card

The following wallet card lists the commands needed to control your answering system from any touch-tone telephone.

Cut along dotted line.



Call your telephone number, then enter your 2-digit remote access code (preset to **19**).

Action	Remote command
Play all messages.....	<b>1</b>
Play new messages.....	<b>2</b>
Delete the message .....	<b>3</b> (during message playback)
Delete all old messages .....	<b>33</b>
Repeat or go back.....	<b>4</b>
Stop .....	<b>5</b>
Help menu .....	<b>*5</b>
Skip the message.....	<b>6</b>
Record announcement.....	<b>*7</b>
Turn system on or off.....	<b>0</b>
End remote access call.....	<b>8</b> (or hang up)

Fold here.

**EL52119/EL52219/EL52319**

**DECT 6.0 cordless telephone/answering system with caller ID/call waiting**

© 2019 Advanced American Telephones. All Rights Reserved. AT&T and the AT&T logo are trademarks of AT&T Intellectual Property licensed to Advanced American Telephones, San Antonio, TX 78219. Printed in China



<https://telephones.att.com>

© 2019 Advanced American Telephones. All Rights Reserved.  
AT&T and the AT&T logo are trademarks of AT&T Intellectual Property licensed to  
Advanced American Telephones, San Antonio, TX 78219.  
RBRC® and 1-800-8-BATTERY® are registered trademarks of the  
Rechargeable Battery Recycling Corporation.  
Printed in China. Issue 1.0 AT&T 01/19.