

CS6719 CS6719-2  
 CS6719-15 CS6719-26  
 CS6719-16 CS6719-27  
 CS6719-17



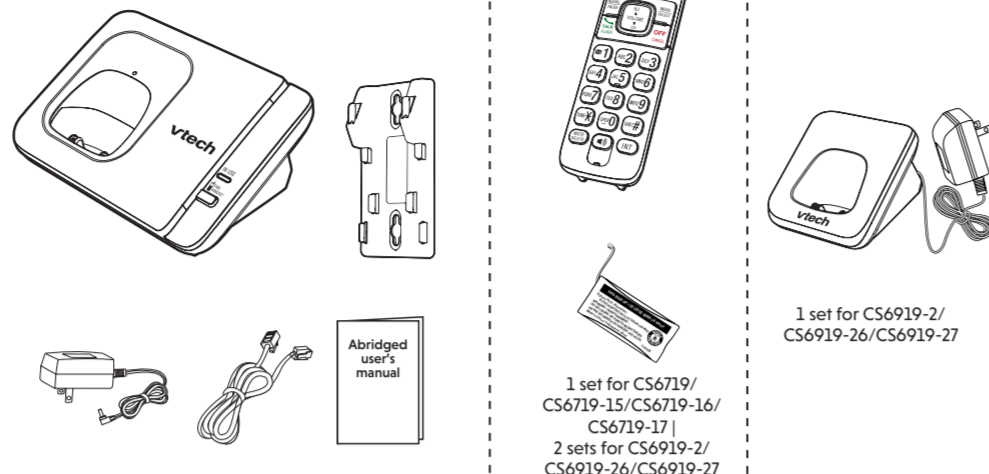
Scan the QR code for support information



**vtech**  
 Abridged user's manual

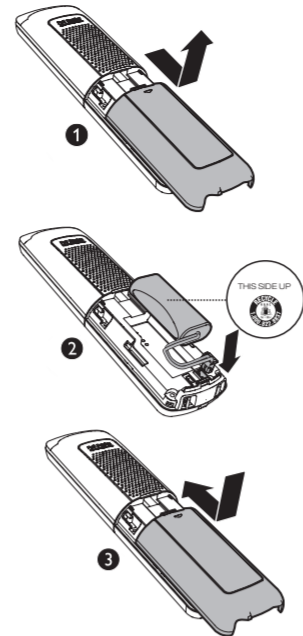
## WHAT'S IN THE BOX

Your telephone package contains the following items. Save your sales receipt and original packaging in case it is necessary to ship your telephone for warranty service.



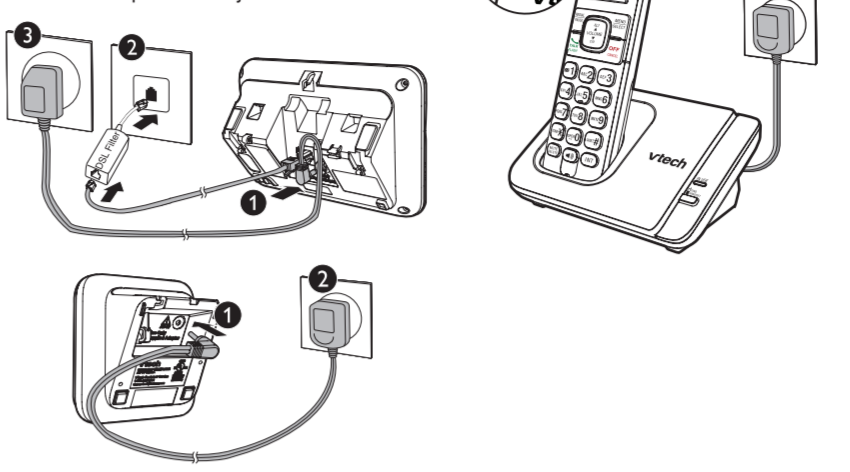
## INSTALL AND CONNECT | MOUNT (OPTIONAL)

### Install the battery

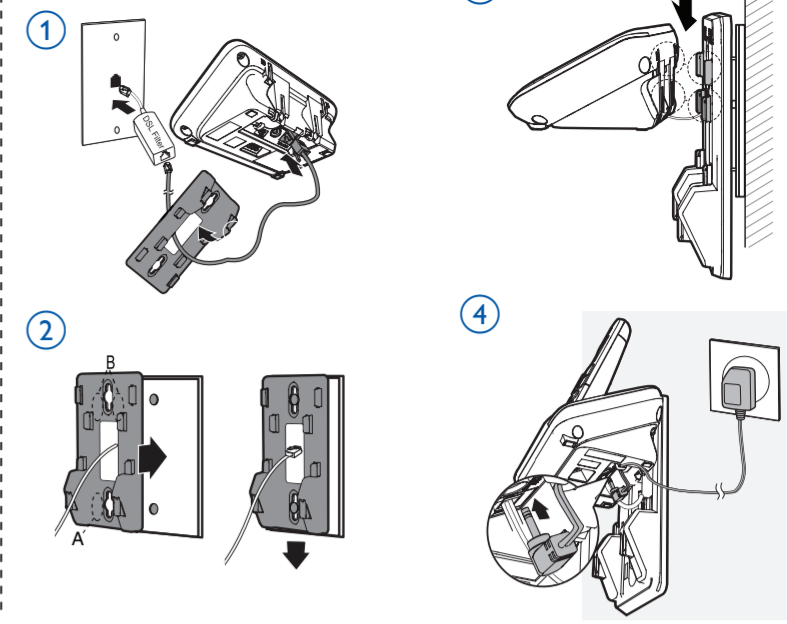


### Connect and charge

Connect the telephone base. If you subscribe to digital subscriber line (DSL) high-speed Internet service through your telephone line, make sure you connect a DSL filter (not included) to the telephone wall jack.



### Mount (optional)



## IMPORTANT SAFETY INSTRUCTIONS

When using your telephone equipment, basic safety precautions should always be followed to reduce the risk of fire, electric shock and injury, including the following:

- Read and understand all instructions.
- Follow all warnings and instructions marked on the product.
- Use only with UL listed Bluetooth devices.
- Unplug this product from the wall outlet before cleaning. Do not use liquid or aerosol cleaners. Use a damp cloth for cleaning.
- CAUTION:** Do not install the telephone base at a height above 2 meters.
- Do not use this product near water such as near a bath tub, wash bowl, kitchen sink, laundry tub or a swimming pool, or in a wet basement or shower.
- Do not place this product on an unstable table, shelf, stand or other unstable surfaces.
- Avoid placing the telephone system in places with extreme temperature, direct sunlight, or other electrical devices. Protect your phone from moisture, dust, corrosive liquids and fumes.
- Slots and openings in the back or bottom of the telephone base and handset are provided for ventilation. To protect them from overheating, these openings must not be blocked by placing the product on a soft surface such as a bed, sofa or rug. This product should never be placed near or over a radiator or heat register. This product should not be placed in any area where proper ventilation is not provided.
- This product should be operated only from the type of power source indicated on the marking label. If you are not sure of the type of power supply in your home or office, consult your dealer or local power company.
- Do not allow anything to rest on the power cord. Do not install this product where the cord may be walked on.
- Never push objects of any kind into this product through the slots in the telephone base or handset because they may touch dangerous voltage points or create a short circuit. Never spill liquid of any kind on the product.
- To reduce the risk of electric shock, do not disassemble this product, but take it to an authorized service facility. Opening or removing parts of the telephone base or handset other than specified access doors may expose you to dangerous voltages or other risks. Incorrect reassembling can cause electric shock when the product is subsequently used.
- Do not overload wall outlets and extension cords.
- Unplug this product from the wall outlet and refer servicing to an authorized service facility under the following conditions:
  - When the power supply cord or plug is damaged or frayed.
  - If liquid has been spilled onto the product.
  - If the product has been exposed to rain or water.
  - If the product does not operate normally by following the operating instructions. Adjust only those controls that are covered by the operation instructions. Improper adjustment of other controls may result in damage and often requires extensive work by an authorized technician to restore the product to normal operation.
  - If the product has been dropped and the telephone base and/or handset has been damaged.
  - If the product exhibits a distinct change in performance.
- Avoid using a telephone (other than cordless) during an electrical storm. There is a remote risk of electric shock from lightning.
- Do not use the telephone to report a gas leak in the vicinity of the leak. Under certain circumstances, a spark may be created when the adapter is plugged into the power outlet, or when the handset is replaced in its cradle. This is a common event associated with the closing of any electrical circuit. The user should not plug the phone into a power outlet, and should not put a charged handset into the cradle, if the phone is located in an environment containing concentrations of flammable or flame-supporting gases, unless there is adequate ventilation. A spark in such an environment could create a fire or explosion. Such environments might include: medical use of oxygen without adequate ventilation; industrial gases (cleaning solvents; gasoline vapors; etc.); a leak of natural gas; etc.
- Only put the handset of your telephone next to your ear when it is in normal talk mode.
- The power adapter is intended to be correctly oriented in a vertical or floor mount position. The prongs are not designed to hold the plug in place if it is plugged into a ceiling, under-the-table or cabinet outlet.
- For pluggable equipment, the socket-outlet shall be installed near the equipment and shall be easily accessible.
- CAUTION:** Use only the batteries indicated in this manual. There may be a risk of explosion if a wrong type of battery is used for the handset. Use only the supplied rechargeable batteries or replacement batteries (BT162342/BT262342) for the handset. Do not dispose of batteries in a fire. They may explode. Disposed of used batteries according to the instruction.
  - Do not use the battery in following conditions:
    - High or low extreme temperature during use, storage or transportation.
    - Replacement of a battery with an incorrect type that can defeat a safeguard.
    - Disposal of a battery into fire or a hot oven, or mechanically crushing or cutting of a battery, that can result in an explosion.
    - Leaving a battery in an extremely high temperature surrounding environment that can result in an explosion or the leakage of flammable liquid or gas.
    - A battery subjected to extremely low air pressure that can result in an explosion or the leakage of flammable liquid or gas.
- Use only the adapter included with this product. Incorrect adapter polarity or voltage can seriously damage the product.
- The applied nameplate is located at the bottom or near of the product.

### SAVE THESE INSTRUCTIONS

#### Battery

- Use only the battery provided or equivalent. To order a replacement, visit our website at [www.vtechphones.com](http://www.vtechphones.com) or call 1 (800) 595-9511. In Canada, go to [phones.vtechcanada.com](http://phones.vtechcanada.com) or call 1 (800) 267-7377.
- Do not dispose of the battery in a fire. Check with local waste management codes for special disposal instructions.
- Do not open or mutilate the battery. Released

## TELEPHONE OPERATIONS



### Use the handset menu

- Press **MENU** when the phone is not in use.
- Press **▼** or **▲** until the screen displays the desired feature menu.
- Press **SELECT** to enter that menu.
- To return to the previous menu, press **CANCEL**.
- To exit menu display, press and hold **CANCEL**.

### Make a call

- Press **TALK** or **CALL**, and then dial the telephone number.

### Answer a call

- Press **TALK**, **CALL** or any dialing keys.

### End a call

- Press **OFF** or put the handset back in the telephone base or charger.

### Speakerphone

- During a call, press **CALL** on the handset to switch between speakerphone and handset earpiece.

### Volume

- During a call, press **▲**/**VOLUME**/**▼** to adjust the listening volume.

## SETUP

After the telephone is installed or battery returns following a power outage and battery depletion, the handset will prompt you to set the date and time.

### Date and time

Follow the steps below to set the date and time. For example, if the date is 25 July, 2024, and the time is 11:07 AM:



- Enter the date.
- Press **SELECT**.
- Enter the time.
- Press **▲** to select **AM** to **PM**.
- Press **SELECT** to save.

**NOTE:** If you have skipped the prompt, you can set up again by pressing **MENU**. Scroll to choose **Set date/time** and press **SELECT**. Then, follow the steps above.

### Change LCD language settings

You can select English, French, or Spanish to be used in all screen displays:

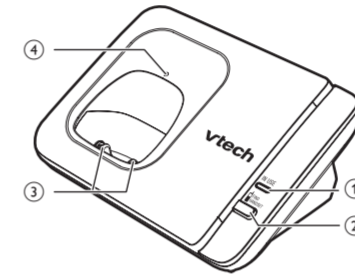


- Press **MENU**.
- Press **▲**/**▼** to scroll to **Settings**, then press **SELECT**.
- Press **SELECT** to select **LCD language**.
- Press **▲**/**▼** to choose your desired language and press **SELECT** twice.

**NOTE:** If you accidentally set the LCD language to Spanish or French, press **MENU** and then enter **\*364#** to change the handset LCD language back to English while the handset is not in use.

## OVERVIEW

### Telephone base



#### 1 - IN USE light

- Flashes when there is an incoming call, or another telephone sharing the same line is in use.
- On when the telephone is in use.

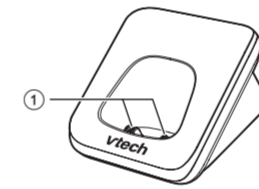
#### 2 - FIND HANDSET

- Page all system handsets.

#### 3 - Charging pole

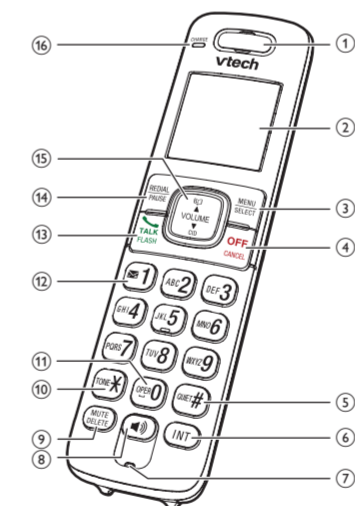
#### 4 - Charge light

### Charger



#### 1 - Charging pole

### Handset



### Find handset

Use this feature to find the system handset.

#### To start paging:

- Press **FIND HANDSET** on the telephone base when not in use. All idle handsets ring and display **\*\* Paging \*\***.

#### To end paging:

- Press **FIND HANDSET** at the telephone base.
- Press **TALK**, **CALL**, **OFF** or any dialing keys on the handset.
- Place the handset in the telephone base or charger.

#### NOTE:

Do not press and hold **FIND HANDSET** for more than 4 seconds. It may lead to handset deregistration.

## PAIR AND CONNECT A BLUETOOTH® HEADSET

Your telephone system is enhanced with Bluetooth feature. You can pair a Bluetooth headset to your telephone system and answer calls with your Bluetooth headset.

### 1 - Handset earpiece

### 2 - LCD display

### 3 - MENU/SELECT

- Show the menu.
- While in a menu, press to select an item, or save an entry or setting.

### 4 - OFF/CANCEL

- Hang up a call.
- Return to the previous menu.
- Press and hold to exit menu display without making changes.
- Delete digits while predialing.
- Silence the handset ringer temporarily while the phone is ringing.
- Press and hold to erase the missed call indicator while the handset is not in use.

### 5 - QUIET#

- Press and hold to turn on or off the quiet mode.
- Press repeatedly to show other dialing options when reviewing a caller ID log entry.

### 6 - INT

- Press to start an intercom conversation or transfer a call (for multi-handset models only).

### 7 - Microphone

- Make or answer a call using the handset speakerphone.
- During a call, press to switch between the speakerphone and the handset earpiece.

### 9 - MUTE/DELETE

- Mute the microphone during a call.
- Silence the handset ringer temporarily while the phone is ringing.
- Delete the displayed entry while reviewing the directory, caller ID log, or redial list.
- Delete digits or characters when entering numbers or names.

### 10 - TONE

- Switch to tone dialing temporarily during a call.

### 11 - OPEN

- Press to add a space when entering names.

### 12 - 1

- Press repeatedly to add or remove 1 in front of the caller ID log entry before dialing or saving it to the directory.
- Press and hold to set or dial your voicemail number.

#### NOTES:

Before you begin, make sure that your Bluetooth enabled headset is not connected to any other Bluetooth device.

Bluetooth wireless technology operates within a short range (a maximum of approximately 15 feet) from the telephone base. Keep connected headset within this range.

If you have trouble pairing your Bluetooth headset to the telephone base, try turning off the Bluetooth feature of the nearby devices that your headset has previously paired.

For more details about the Bluetooth feature, read the online Complete user's manual.

#### Pair and connect a Bluetooth headset

- Set your Bluetooth headset to pairing mode. Refer to your Bluetooth headset user's manual to learn how.
- Press **TALK** or **CALL** on the handset.
- Press and hold **FIND HANDSET** on the telephone base for 4 seconds.
  - The telephone then enters pairing mode. The pairing process takes up to 90 seconds.
  - To cancel pairing, press **FIND HANDSET** on the telephone base.

### 13 - TALK/FLASH

- Make or answer a call.
- Answer an incoming call when you receive a call waiting alert.

### 14 - REDIAL/PAUSE

- Review the redial list.
- Press and hold to insert a dialing pause while dialing or entering numbers into the directory.

### 15 - ▲/VOLUME

- Review the directory when the phone is not in use.
- Scroll up while in a menu, or in the directory, caller ID log or redial list.
- Move the cursor to the right when entering numbers or names.
- Increase the listening volume during a call.

### VOLUME/▼ CID

- Review the caller ID log when the telephone is not in use.
- Scroll down while in a menu, or in the directory, caller ID log or redial list.
- Move the cursor to the left when entering numbers or names.
- Decrease the listening volume during a call.

### 16 - CHARGE light

- On when the handset is charging.

### Display icons

	The battery icon flashes when the battery is low and needs charging.
	The battery icon animates when the battery is charging.
	The battery icon becomes solid when the battery is fully charged.
	The handset ringer is turned off.
	There are new voicemail received from your telephone service provider.
	New caller ID log entry.
	The ECO mode activates automatically to reduce power consumption when the handset is within range from the telephone base.

- Press **OFF** on the handset or place the handset in the telephone base or charger after pairing.

#### Auto connection

- When your Bluetooth headset moves within Bluetooth range of the telephone base, or is turned on within range, the telephone base automatically tries to connect to the headset.

#### NOTES:

**To check if the Bluetooth headset is connected,** use another telephone or a cell phone to make a call to your CS6719/CS6719-15/CS6719-16/CS6719-17/CS6719-2/CS6719-26/CS6719-27 telephone, and answer the call with your Bluetooth headset.

You can use your Bluetooth headset to answer calls or end the calls.

If you fail to answer the call with your Bluetooth headset, re-try the pairing steps above.

While on a call using your Bluetooth headset, keep your headset closer to the telephone base (within 15 feet) and make sure that there are no physical obstacles such as large furniture or thick wall in between.

The Bluetooth® word mark and logos are owned by Bluetooth SIG, Inc. and any use of such marks by Advanced American Telephones and its parent, Vtech Holdings Limited, is under license. Vtech Holdings Limited is a member of Bluetooth SIG, Inc. Other trademarks and trade names are those of their respective owners.

BT\_HS59VSD-B558VSD  
 CS6719-K\_BT\_HS59VSD-B558VSD\_K-US-CAN\_ACRB\_V4\_240509  
 All rights reserved. 05/24  
 © 2024 Vtech Technologies Canada Ltd.  
 © 2024 Vtech Communications, Inc.  
 Specifications are subject to change without notice.

The Bluetooth® word mark and logos are owned by Bluetooth SIG, Inc. and any use of such marks by Advanced American Telephones and its parent, Vtech Holdings Limited, is under license. Vtech Holdings Limited is a member of Bluetooth SIG, Inc. Other trademarks and trade names are those of their respective owners.

Go to [phones.vtechcanada.com](http://phones.vtechcanada.com) (Canada) for the latest Vtech product news.

Go to [www.vtechphones.com](http://www.vtechphones.com) (US) to register your product for enhanced warranty support and latest Vtech product news.

