



at&t

User's manual

**EL52209/EL52259/
EL52309/EL52359/EL52409
DECT 6.0 cordless telephone/
answering system with
caller ID/call waiting**



Congratulations

on purchasing your new AT&T product. Before using this AT&T product, please read the **Important safety instructions** on pages 57-58 of this manual. Please thoroughly read the user's manual for all the feature operations and troubleshooting information necessary to install and operate your new AT&T product. You can also visit our website at **www.telephones.att.com** or call **1 (800) 222-3111**. In Canada, dial **1 (866) 288-4268**.

Model #: EL52209 (two handsets)
EL52259 (two handsets)
EL52309 (three handsets)
EL52359 (three handsets)
EL52409 (four handsets)
Type: DECT 6.0 cordless telephone/answering system

Serial #: _____
(found on the bottom of the telephone base)

Purchase date: _____

Place of purchase: _____

Both the model and serial number of your AT&T product can be found on the bottom of the telephone base.



Telephones identified with this logo have reduced noise and interference when used with most T-coil equipped hearing aids and cochlear implants. The TIA-1083 Compliant Logo is a trademark of the Telecommunications Industry Association. Used under license.



The ENERGY STAR® program (www.energystar.gov) recognizes and encourages the use of products that save energy and help protect our environment. We are proud to mark this product with the ENERGY STAR® label indicating it meets the latest energy efficiency guidelines.

Parts checklist

Save your sales receipt and original packaging in the event warranty service is necessary.

Your telephone package contains the following items:



User's manual



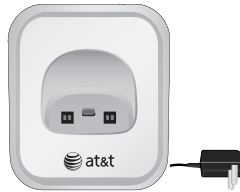
Quick start guide



Cordless handset
 (2 for EL52209)
 (2 for EL52259)
 (3 for EL52309)
 (3 for EL52359)
 (4 for EL52409)



Telephone base



Charger for cordless handset with power adapter installed
 (1 for EL52209)
 (1 for EL52259)
 (2 for EL52309)
 (2 for EL52359)
 (3 for EL52409)



Wall mount bracket



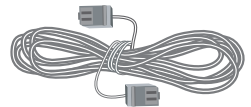
Battery for cordless handset
 (2 for EL52209)
 (2 for EL52259)
 (3 for EL52309)
 (3 for EL52359)
 (4 for EL52409)



Battery compartment cover
 (2 for EL52209)
 (2 for EL52259)
 (3 for EL52309)
 (3 for EL52359)
 (4 for EL52409)



Power adapter for telephone base



Telephone cord

User's manual

**EL52209/EL52259/
EL52309/EL52359/EL52409**
**DECT 6.0 cordless telephone/
answering system with
caller ID/call waiting**



Table of contents

Getting started

Quick reference guide - handset	1
Quick reference guide - telephone base.....	2
Installation	3
Telephone base & charger installation	4
Battery installation & charging	5
Wall installation	7
Wall to tabletop installtion	8

Handset settings

Telephone settings	9
Ringer volume	9
Telephone settings	10
Ringer tone	10
Key tone	10
LCD language.....	10
Set date/time.....	11
Voice mail (visual message waiting) indicator.....	12
Clear voice mail indication.....	12
Home area code.....	13
Answering system settings.....	14
Answer on/off	14
Announcement.....	15
Number of rings.....	16
Remote access code	17
Message alert tone	18

Telephone operation

Making, answering, and ending calls	19
Making a call.....	19
On-hook dialing (predialing)	19
Answering a call.....	19

Temporary ringer silencing.....	19
Ending a call.....	19
Auto off	19
Handset operation.....	20
Speakerphone information	20
Last number redial.....	20
Options while on calls.....	21
Volume control	21
Call waiting.....	21
Mute	21
Chain dialing	22

Multiple handset use

Handset locator.....	23
Join a call in progress.....	23
Answer an incoming call during an intercom call.....	24
Call transfer using intercom.....	25

Directory

About the directory	26
Shared directory.....	26
Capacity.....	26
Exiting the directory.....	26
Create directory entries.....	27
To create a new directory entry	27
Review directory.....	29
To review directory entries.....	29
Search directory	29
To search by name	29
To dial, delete or edit entries	30
Display dial.....	30
To delete an entry	30
To edit an entry.....	30

Caller ID

About caller ID	31
-----------------------	----

Information about caller ID with call waiting.....	31	Appendix B	Handset display screen messages	46
Caller ID operation	32	Appendix C	Troubleshooting.....	48
Memory match	32	Appendix D	Maintenance	56
Missed (new) calls indicator	32	Appendix E	Important safety information.....	57
Caller ID history	33		Safety information.....	57
How the caller ID history (call log) works.....	33		Especially about cordless telephones	57
To review the caller ID history...	34		Precautions for users of implanted cardiac pacemakers.....	58
Make a call log entry ready to dial 34			Pacemaker patients.....	58
Dial a call log entry	35		Especially about telephone answering systems.....	58
Delete entries	35	Appendix F	FCC part 68 and ACTA.....	59
Save a call log entry to the directory	35	Appendix G	FCC part 15.....	60
Reasons for missing caller ID information	36	Appendix H	Limited warranty	61
Answering system		Appendix I	Technical specifications.....	63
About the answering system.....	37		DECT 6.0 digital technology.....	63
Answering system and voice mail.. 37			Telephone operating range.....	63
Message capacity.....	37		Extended range and clarity	63
Turn the answering system on or off at the telephone base.....	37	Index		64
New message indication	38			
Call screening at the telephone base	38			
Call intercept.....	38			
Base ringer	38			
Temporarily turning off the message alert tone	38			
Message playback.....	39			
Options during playback	40			
To delete all old messages.....	40			
Recording & playing memos.....	41			
To play back a memo	41			
Base message counter displays...	42			
Remote access.....	43			
Appendix A				
Alert tones and lights	45			
Screen icons	45			
Handset alert tones	45			
Telephone base tone	45			
Lights.....	45			

Quick reference guide - handset

Charge light

The charge light will be on when the handset is charging (page 5).

▲DIR/VOLUME

Press **DIR▲** to show directory entries (page 29) when the phone is not in use.

Press to scroll up while in menus (page 9). Press **▲VOLUME** to increase the volume level during a call (page 21).

REDIAL/PAUSE

Press to view redial memory (page 20). While entering numbers, press and hold to insert a dialing pause (page 27).

Phone/FLASH

Press to make or answer a call (page 19).

During a call, press to answer an incoming call when you receive a call waiting alert (page 21).

1

While reviewing a call log entry, press repeatedly to add or remove 1 in front of the telephone number before dialing or saving it in the directory.

Speaker

Press to switch between speakerphone and handset (page 20).

▼CID/VOLUME

Press **▼CID** to show caller ID information (page 33) when the phone is not in use.

Press to scroll down while in menus (page 9). Press **▼VOLUME** to decrease the volume level during a call (page 21).

MENU/SELECT

Press to display the menu (page 9). Once in the menu, press to select an item or save an entry or setting.

OFF/CLEAR

Press and hold while the telephone is not in use to erase the missed calls indicator.

During a call, press to hang up (page 19).

While using menus, press to cancel an operation, back up to the previous menu, or exit the menu display (page 9).

DELETE/MUTE

During a call, press to mute microphone (page 21).

While reviewing the caller ID history or directory, press to delete an individual entry (page 30 and 35).

While predialing, press to delete digits (page 20).

#

Press repeatedly to display other dialing options when reviewing a call log entry.

INT

Press to initiate an intercom conversation or transfer a call (page 24-25).

Main menu

>shows a highlighted item



Menu

Main menu

- ANS. SYSTEM (page 37)
- DIRECTORY (page 26)
- CALL LOG (page 31)
- RINGER VOLUME (page 9)
- RINGER TONE (page 9)
- KEY TONE (page 10)
- LCD LANGUAGE (page 10)
- SET DATE/TIME (page 11)
- CLR VOICEMAIL (page 12)
- HOME AREA CODE (page 13)

Using menus

Press **▲** or **▼** to scroll through menu items.

Press **MENU/SELECT** to select or modify a highlighted item.

Press **OFF/CLEAR** to cancel an operation, back up to the previous menu, or exit the menu display.

Quick reference guide - telephone base

IN USE indicator

On when the handset is in use or when the answering system is answering an incoming call.

Flashes when another telephone is in use on the same line.

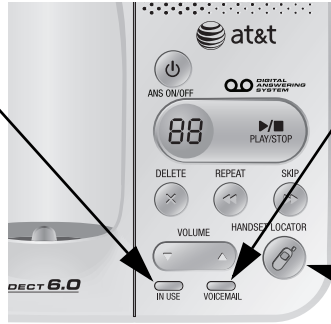
Flashes quickly when there is an incoming call.

VOICEMAIL indicator

Flashes when you have new voice mail. Voice mail service is offered by your local telephone company, and is different from answering system messages (page 12).

HANDSET LOCATOR

Press to make handsets beep so you can locate them (page 23).



MESSAGE COUNTER

Number of messages (or during playback, message number currently playing).

REPEAT

Press to repeat a message. Press **twice** to play the previous message (page 40).

DELETE

Press to delete the message currently playing.

Press twice to delete all old messages when the phone is not in use (page 40).

ON/OFF

Press to turn the answering system on or off.

PLAY/STOP

Press to start or stop message playback (page 39).

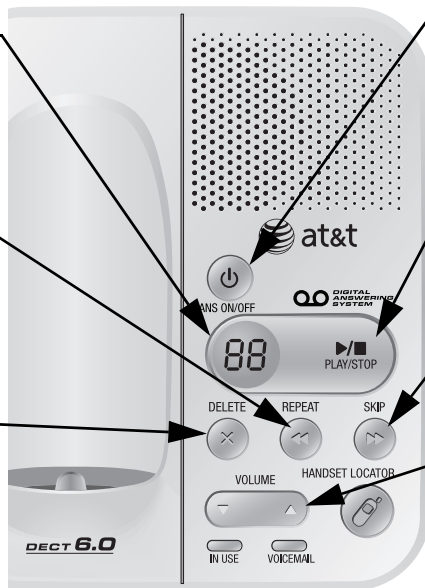
SKIP

Press to skip a message (page 40).

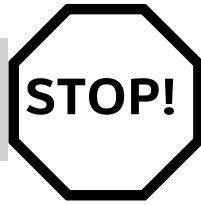
VOLUME

During message playback, press to adjust the listening volume (page 38)

While in idle mode, press to adjust the base ringer volume (page 38).



You must install and charge the handset battery before using the cordless handset.



See page 5 for easy instructions.

Install the telephone base close to a telephone jack and a power outlet not controlled by a wall switch. The telephone base can be placed on a flat surface or vertically mounted on the wall (see page 7). For optimum range and better reception, place the telephone base in a central and open location.

If you subscribe to high-speed Internet service (digital subscriber line - DSL) through your telephone line, you must install a DSL filter between the telephone line cord and the telephone wall jack (see the following page). The filter prevents noise and caller ID problems caused by DSL interference. Please contact your DSL service provider for more information about DSL filters.

Your product may be shipped with a protective sticker covering the handset or telephone base display - remove it before use.

For customer service or product information, visit our website at **www.telephones.att.com** or call **1 (800) 222-3111**. In Canada, dial **1 (866) 288-4268**.

Avoid placing the telephone base too close to:

- Communication devices such as: television sets, VCRs, or other cordless telephones.
- Excessive heat sources.
- Noise sources such as a window with traffic outside, motors, microwave ovens, refrigerators, or fluorescent lighting.
- Excessive dust sources such as a workshop or garage.
- Excessive moisture.
- Extremely low temperature.
- Mechanical vibration or shock such as on top of the washing machine or workbench.

Telephone base & charger installation

Install the telephone as shown below.

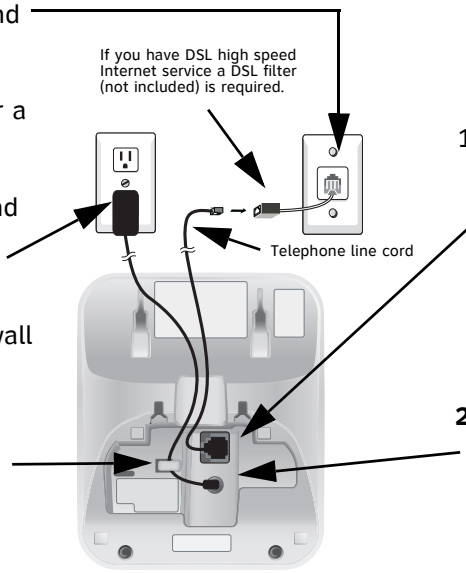
The telephone base is ready for table use. If you want to change to wall mounting, see page 7 for details.

5. Plug the other end of the telephone line cord into a telephone jack or a DSL filter.

4. Plug the large end of the power adapter into an power outlet not connected to a wall switch.

3. Route the power adapter cord through the slot.

If you have DSL high speed Internet service a DSL filter (not included) is required.

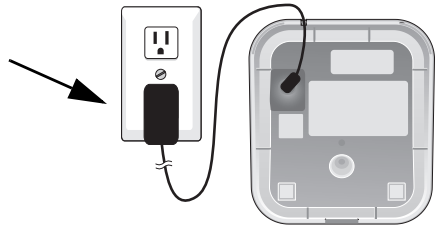


1. Plug one end of the telephone line cord into the telephone jack on the bottom of the telephone base.

2. Plug the small end of the power adapter into the power jack on the bottom of the telephone base.

Charger installation

Plug the power adapter into an electrical outlet not connected to a wall switch.



IMPORTANT INFORMATION

1. Use only the power adapter(s) supplied with this product. To order a replacement power adapter, visit our website at www.telephones.att.com, or call **1 (800) 222-3111**. In Canada, dial **1 (866) 288-4268**.
2. The power adapters are intended to be correctly oriented in a vertical or floor mount position. The prongs are not designed to hold the plug in place if it is plugged into a ceiling, under-the-table or cabinet outlet.

Battery installation & charging

Install the battery as shown below. After installing the battery, you might be able to make and receive short calls. For best performance, charge the handset for at least 16 hours before use. When not in use, place the handset in the telephone base or charger. See the table on page 63 for battery operating times.

If the battery is depleted, it may take approximately four minutes to charge the handset before it can resume screen display. The screen will continue to display **LOW BATTERY** until the battery has charged for approximately one hour.; the backlight on the handset disables when in **LOW BATTERY** mode.

Battery indicators	Battery status	Action
The screen is blank.	Battery has no charge and the handset cannot be used.	Charge until the screen shows LOW BATTERY (at least 10 minutes).
The screen shows PLACE IN CHARGER and the battery icon flashes	Battery has very little charge the handset cannot be used.	Charge until the screen shows LOW BATTERY (about four minutes).
The screen shows LOW BATTERY , the battery icon flashes, and the handset beeps once every minute.	Battery has enough charge to be used for a short time. There is not yet enough charge to use the speakerphone.	Charge until the screen shows HANDSET X (about one hour).
The screen shows HANDSET X .	Battery is charged.	To keep the battery charged, place it in the base or charger when not in use.

Battery installation & charging



Step 1
Plug the battery securely into the connector inside the handset battery compartment, matching the color-coded label. Insert the supplied battery with the label **THIS SIDE UP** facing up as indicated.



Step 2
Align the cover flat against the battery compartment, then slide it upwards until it clicks into place.



Step 3
Charge the handset by placing it face up in the telephone base or charger. The **CHARGE** light is on when charging.



To replace the battery, press the tab and slide the battery compartment cover downwards. Lift out the old battery and disconnect it from the handset. Follow the instructions on the previous page to install and charge the new battery.

IMPORTANT INFORMATION

Use only the power adapter(s) supplied with this product. To order a replacement power adapter, visit our website at www.telephones.att.com, or call **1 (800) 222-3111**. In Canada, dial **1 (866) 288-4268**.

Wall installation

Your telephone base is ready for tabletop use. If you want to mount your telephone on a wall, use the provided wall bracket to connect with a standard dual-stud telephone wall mounting plate. If you do not have this mounting plate, you can purchase one from many hardware or consumer electronic retailers. You might need a professional to install the mounting plate.

Tabletop to wall installation

1. Position the telephone base as shown below. Insert the extended tabs (marked A) of the wall bracket into the slots on the back of the telephone base (marked A). Push the telephone base down until it is securely in place.
2. If you are using a DSL filter, plug the line cord into the filter now. Route the telephone line cord (or DSL filter) through the wall bracket hole. Route the power cord out of the bottom of the telephone.
3. Plug the telephone line cord (or DSL filter) into the wall jack. Plug the power adapter into a power outlet not controlled by a wall switch.
4. Align the holes on the bracket with the standard wall plate and slide the bracket down until locks securely. Bundle the telephone line cord and power adapter cord neatly with a twist tie.

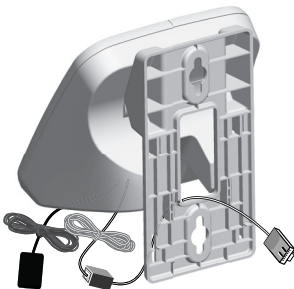
1.



2.



3.



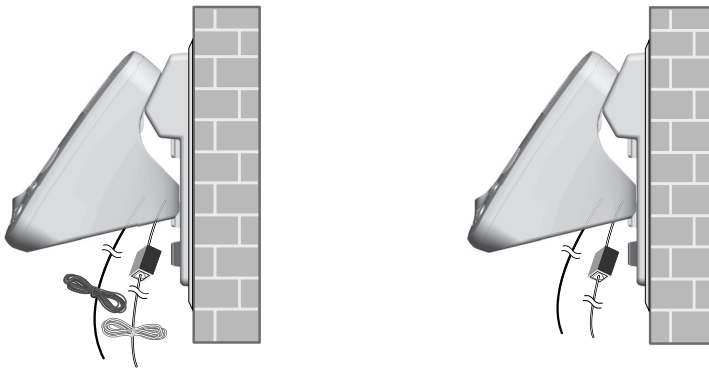
4.



Wall installation

Wall to tabletop installation

1. If the telephone line cord and power adapter cord are bundled, unite them first.
2. Push the telephone base down to detach it from the black plastic wall bracket. Unplug the telephone line cord (or DSL filter) from the wall. Unplug the power adapter from the power outlet.
3. See Telephone base and charger installation on page 3.



Telephone settings


Use the menus to change the telephone's settings.

1. Press **MENU/SELECT** in idle mode (when the phone is not in use) to enter the main menu.
2. Use **▼CID** or **DIR▲** to scroll to the feature to be changed. When scrolling through the menu, the top menu item is always highlighted with a **>** symbol.
3. Press **MENU/SELECT** to select the highlighted item.



NOTE: To cancel an operation, back up to the previous menu or exit the menu display, press **OFF/CLEAR**. Press and hold **OFF/CLEAR** to return to idle mode.

Ringer volume

You can set the ringer volume level (1-6), or turn the ringer off. When the ringer is off,  appears in the handset screen.

1. Press **MENU/SELECT** in idle mode to enter the main menu.
2. Use **▼CID** or **DIR▲** to scroll to **>RINGER VOLUME**, then press **MENU/SELECT**.
3. Press **▼CID** or **DIR▲** to sample each volume level.
4. Press **MENU/SELECT** to save your preference and return to the main menu.



NOTES:

1. The ringer volume level also determines the ringer levels of intercom calls (pages 24-25) and the paging tone when initiating the handset locator feature (page 23). If the handset ringer volume level is set to off, that handset is silenced for all incoming calls and paging.
2. Changing on handset ringer volume does not affect base ringer volume. For more information on base ringer volume, see page 38.

Telephone settings

Ringer tone

This feature allows you to choose one of 10 ringer tones.

1. Press **MENU/SELECT** in idle mode to enter the main menu.
2. Use **▼CID** or **DIR▲** to scroll to **RINGER TONE**, then press **MENU/SELECT**.
3. Press **▼CID** or **DIR▲** to get to the next ringer tone and to hear a sample of it.
4. Press **MENU/SELECT** to save your preference and return to the main menu.



NOTE: If you turn off the ringer volume, you will not hear ringer tone samples.

Key tone

The handset is factory programmed to beep with each key press. If you turn off the **KEY TONE**, there are no beeps when you press keys.

1. Press **MENU/SELECT** in idle mode to enter the main menu.
2. Use **▼CID** or **DIR▲** to scroll to **>KEY TONE**, then press **MENU/SELECT**.
3. Press **▼CID** or **DIR▲** to select **ON** or **OFF**.
4. Press **MENU/SELECT** to save your preference and return to the main menu.



LCD language

You can select the language used for all screen displays.

1. Press **MENU/SELECT** in idle mode to enter the main menu.
2. Use **▼CID** or **DIR▲** to scroll to **>LCD LANGUAGE**, then press **MENU/SELECT**.
3. Press **▼CID** or **DIR▲** to select **ENGLISH**, **FRANCAIS** or **ESPANOL**.
4. Press **MENU/SELECT** to save your preference and return to the main menu.

