



at&t

Part 1

Important product information



This symbol is to alert you to important operating or servicing instructions that may appear in this user's manual. Always follow basic safety precautions when using this product to reduce the risk of injury, fire, or electric shock.

Safety information

- **Read and understand all instructions in the user's manual. Observe all markings on the product.**
- **Avoid using this product during a thunderstorm.** There may be a slight chance of electric shock from lightning.
- **Do not use this product in the vicinity of a gas leak.** If you suspect a gas leak, report it immediately, but use this product away from the area where gas is leaking. If this product is a cordless model, make sure the base is also away from the area.
- **Do not use this product near water, or when you are wet.** For example, do not use it in a wet basement or shower, or next to a swimming pool, bathtub, kitchen sink, or laundry tub. Do not use liquids or aerosol sprays for cleaning. If this product comes in contact with any liquids, unplug any line or power cord immediately. Do not plug the product back in until it has dried thoroughly.
- **Install this product in a protected location** where no one can trip over any line or power cords. Protect cords from damage or abrasion.

- **If this product does not operate normally, read Troubleshooting on pages 8-9 of the part 2 user's manual.** If you cannot solve the problem, or if the product is damaged, refer to the **Limited warranty** section on page 8-12 of this user's manual. Do not open this product except as may be directed in your user's manual. Opening the product or reassembling it incorrectly may expose you to hazardous voltages or other risks.
- **If this product has a three-prong (grounding) plug or a polarized plug with one wide prong, it may not fit in non-polarized outlets.** Do not defeat the purpose of these plugs. If they do not fit in your outlet, the outlet should be replaced by an electrician.



CAUTION: Use only the power adapter provided with this product. To obtain a replacement, visit our website at www.telephones.att.com, or call **1 (888) 915-2007**. In Canada, dial **1 (866) 288-4268**.

SAVE THESE INSTRUCTIONS

FCC, ACTA and IC information

If this equipment was approved for connection to the telephone network prior to July 23, 2001, it complies with Part 68 of the Federal Communications Commission (FCC) rules. If the equipment was approved after that date, it complies with the Part 68 rules and with the Technical Requirements for Connection of Equipment to the Telephone Network adopted by the Administrative Council for Terminal Attachments (ACTA). We are required to provide you with the following information.

1. Product identifier and REN information

The label on the back or bottom of this equipment contains, among other things, an identifier indicating product approval and the Ringer Equivalence Number (REN). This information must be provided to your telephone service provider upon request. For equipment approved prior to July 23, 2001, the product identifier is preceded by the phrase "FCC Reg No." and the REN is listed separately. For equipment approved after that date, the product identifier is preceded by "US" and a colon (:), and the REN is encoded in the product identifier without a decimal point as the sixth and seventh characters following the colon. For example, the product identifier US:AAAEQ03T123XYZ would indicate an REN of 0.3.

The REN is used to determine how many devices you may connect to your telephone line and still have them ring when you are called. In most, but not all areas, the sum of all RENS should be five (5.0) or less. You may want to contact your telephone service provider for more information.

2. Connection and use with the nationwide telephone network.

The plug and jack used to connect this equipment to the premises wiring and the telephone network must comply with the applicable part 68 rules and technical requirements adopted by ACTA. A compliant telephone cord and modular plug is provided with this product. It is designed to be connected to a compatible modular jack that is also compliant. An RJ11 jack should normally be used for connecting to a single line and an RJ14 jack for two lines, see installation instructions in the user's manual. This equipment may not be used with coin telephone lines or with party lines. If you have specially wired alarm dialing equipment connected to our telephone line, ensure the connection of this equipment does not disable your alarm equipment. If you have questions about what will disable the alarm equipment, consult your telephone service provider or qualified installer.

3. Repair instructions

If this equipment is malfunctioning, it must be unplugged from the modular jack until the problem has been corrected. Repairs to this telephone equipment can only be made by the manufacturer or its authorized agents. For repair procedures, follow the instructions outlined under the limited warranty.

4. Rights of the telephone company

If this equipment is causing harm to the telephone network, the telephone service provider may temporarily discontinue your telephone service. The telephone service provider is required to notify you before interrupting service. If advance notice is not practical, you will be notified as soon as possible. You will be given the opportunity

to correct the problem and the telephone service provider is required to inform you of your right to file a complaint with the FCC. Your telephone service provider may make changes in its facilities, equipment, operation, or procedures that could affect the proper functioning of this product. The telephone service provider is required to notify you if such changes are planned.

5. Hearing aid compatibility

If this product is equipped with a corded or cordless handset, it is hearing aid compatible.

6. Programming/testing of emergency numbers

If this product has memory dialing locations, you may choose to store police, fire department and emergency medical service telephone numbers in these locations. If you do, please keep three things in mind:

- a. We recommend that you also write the telephone number on the directory card (if applicable), so that you can still dial the emergency number manually if the memory dialing feature doesn't work.
- b. This feature is provided only as a convenience, and the manufacturer assumes no responsibility for customer reliance upon the memory feature.
- c. Testing the emergency telephone numbers you have stored is not recommended. However, if you do make a call to an emergency number:
 - You must remain on the line and briefly explain the reason for the call before hanging up.
 - Programming/testing of emergency numbers should be performed during off-peak hours, such as in the early morning or late evening, when the emergency services tend to be less busy.

Part 15 of FCC rules

Some telephone equipment generates, uses, and can radiate radio-frequency energy and, if not installed and used properly, may cause interference to radio and television reception. This product has been tested and found to meet the standards for a class B digital device, as specified in part 15 of the FCC rules.

These specifications are designed to provide reasonable protection against such interference in a residential installation. However, there is no guarantee that interference will not occur in a particular installation.

If this product causes interference to radio, VCR or television reception when it is in use, you might correct the interference with any one or all of these measures:

- Where it can be done safely, re-orient the receiving radio, VCR or television antenna.
- To the extent possible, relocate the radio, VCR, television or other receiver with respect to the telephone equipment.
- If this telephone product runs on AC power, plug your product into an AC outlet that's not on the same circuit as one used by your radio, VCR or television.
- Consult a dealer or an experienced radio/TV technician for help.

Modifications to this product, not expressly approved by the manufacturer, could void the user's authority to operate the equipment.



CAUTION: To maintain compliance with the Federal Communication Commission's radio frequency exposure guideline, please keep the repeater at least 20 cm (about 8 inches) from continuous human contact.

Industry Canada

Operation is subject to the following two conditions: (1) this device may not cause harmful interference, and (2) this device must accept any interference, including interference that may cause undesired operation.

The term "IC" before the certification/ registration number only signifies that the Industry Canada technical specifications were met.

The Ringer Equivalence Number (REN) for this terminal equipment is 0.1. The REN is an indication of the maximum number of devices allowed to be connected to a telephone interface. The termination on an interface may consist of any combination of devices subject only to the requirement that the sum of the RENs of all the devices does not exceed five.

This product meets the applicable Industry Canada technical specifications.

This Class B digital apparatus complies with Canadian ICES-003.

Limited warranty

The AT&T brand is used under license - any repair, replacement or warranty service, and all questions about this product should be directed to: In the United States of America, call **1 (888) 915-2007** or visit **www.telephones.att.com**. In Canada, call **1 (866) 288-4268**.

1. What does this limited warranty cover?

The manufacturer of this AT&T-branded product warrants to the holder of a valid proof of purchase ("CONSUMER" or "you") that the product and all accessories provided in the sales package ("PRODUCT") are free from defects in material and workmanship, pursuant to the following terms and conditions, when installed and used normally and in accordance with the PRODUCT operating instructions. This limited warranty extends only to the CONSUMER for products purchased and used in the United States of America and Canada.

2. What will be done if the PRODUCT is not free from defects in materials and workmanship during the limited warranty period ("materially defective PRODUCT")?

During the limited warranty period, the manufacturer's authorized service representative will repair or replace at the manufacturer's option, without charge, a materially defective PRODUCT. If the manufacturer repairs the PRODUCT, they may use new or refurbished replacement parts. If the manufacturer chooses to replace the PRODUCT, they may replace it with a new or refurbished PRODUCT of the same or similar design. The manufacturer will retain the defective parts, modules, or equipment. Repair or replacement

of the PRODUCT, at the manufacturer's option, is your exclusive remedy. The manufacturer will return the repaired or replacement products to you in working condition. You should expect the repair or replacement to take approximately 30 days.

3. How long is the limited warranty period?

The limited warranty period for the PRODUCT extends for ONE (1) YEAR from the date of purchase. If the manufacturer repairs or replaces a materially defective PRODUCT under the terms of this limited warranty, this limited warranty also applies to the repaired or replacement PRODUCT for a period of either (a) 90 days from the date the repaired or replacement PRODUCT is shipped to you or (b) the time remaining on the original one-year limited warranty; whichever is longer.

4. What is not covered by this limited warranty?


This limited warranty does not cover:

- PRODUCT that has been subjected to misuse, accident, shipping or other physical damage, improper installation, abnormal operation or handling, neglect, inundation, fire, water, or other liquid intrusion; or
- PRODUCT that has been damaged due to repair, alteration, or modification by anyone other than an authorized service representative of the manufacturer; or
- PRODUCT to the extent that the problem experienced is caused by signal conditions, network reliability or cable or antenna systems; or
- PRODUCT to the extent that the problem is caused by use with non-AT&T accessories; or

- PRODUCT whose warranty/quality stickers, PRODUCT serial number plates or electronic serial numbers have been removed, altered or rendered illegible; or
- PRODUCT purchased, used, serviced, or shipped for repair from outside the United States of America or Canada, or used for commercial or institutional purposes (including but not limited to products used for rental purposes); or
- PRODUCT returned without a valid proof of purchase (see item 6 below); or
- Charges for installation or setup, adjustment of customer controls, and installation or repair of systems outside the unit.

5. How do you get warranty service?

To obtain warranty service in the United States of America, call **1 (888) 915-2007**; in Canada, please dial **1 (866) 288-4268**.

 **NOTE:** Before calling for service, please review the user's manual; a check of the PRODUCT controls and features may save you a service call.

Except as provided by applicable law, you assume the risk of loss or damage during transit and transportation and are responsible for delivery or handling charges incurred in the transport of the PRODUCT(s) to the service location. The manufacturer will return repaired or replaced PRODUCT under this limited warranty to you. Transportation, delivery or handling charges are prepaid. The manufacturer assumes no risk for damage or loss of the PRODUCT in transit. If the PRODUCT failure is not covered by this limited warranty, or proof of purchase does

not meet the terms of this limited warranty, the manufacturer will notify you and will request that you authorize the cost of repair prior to any further repair activity. You must pay for the cost of repair and return shipping costs for the repair of products that are not covered by this limited warranty.

6. What must you return with the PRODUCT to get warranty service?

You must:

- a. Return the entire original package and contents including the PRODUCT to the service location along with a description of the malfunction or difficulty; and
- b. Include a “valid proof of purchase” (sales receipt) identifying the PRODUCT purchased (PRODUCT model) and the date of purchase or receipt; and
- c. Provide your name, complete and correct mailing address, and telephone number.

7. Other limitations

This warranty is the complete and exclusive agreement between you and the manufacturer of this AT&T branded PRODUCT. It supersedes all other written or oral communications related to this PRODUCT. The manufacturer provides no other warranties for this PRODUCT. The warranty exclusively describes all of the manufacturer’s responsibilities regarding the PRODUCT. There are no other express warranties. No one is authorized to make modifications to this limited warranty and you should not rely on any such modification.

State/Provincial Law Rights: This warranty gives you specific legal rights, and you may also have other rights which vary from state to state or province to province.

Limitations: Implied warranties, including those of fitness for a particular purpose and merchantability (an unwritten warranty that the PRODUCT is fit for ordinary use) are limited to one year from date of purchase. Some states/provinces do not allow limitations on how long an implied warranty lasts, so the above limitation may not apply to you. In no event shall the manufacturer be liable for any indirect, special, incidental, consequential, or similar damages (including, but not limited to lost profits or revenue, inability to use the PRODUCT or other associated equipment, the cost of substitute equipment, and claims by third parties) resulting from the use of this PRODUCT. Some states/provinces do not allow the exclusion or limitation of incidental or consequential damages, so the above limitation or exclusion may not apply to you.

Please retain your original sales receipt as proof of purchase.



www.telephones.att.com

www.telephones.att.com



User's manual Part 2

SB67128 DECT 6.0 Repeater

This manual contains information about this product's installation and operation. Please also read **Part 1 - Important product information**.

For customer service or product information, visit our website at www.telephones.att.com or call

1 (888) 915-2007. In Canada, dial **1 (866) 288-4268**.



Before you install

Parts list

- SB67128 DECT 6.0 repeater
- Power adapter
- Part 1 Important product information
- Part 2 User's manual
- Package of screws



Use only the power adapter supplied with this product. To obtain a replacement, visit our website at **www.telephones.att.com** or call **1 (888) 915-2007**. In Canada, dial **1 (866) 288-4268**.

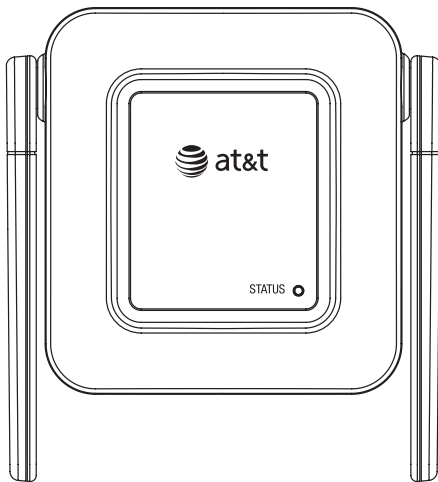


Figure 1: Repeater

About the repeater

You can use a repeater to extend the operating range for the AT&T SB67118 DECT 6.0 4-line corded/cordless telephone system to cover areas where the signal is very weak or not available. The repeater extends the range in all directions, even going around certain barriers.

The telephone base, cordless handsets and repeaters are linked through wireless connections. When configured properly, you should not notice any reception problems as you move around within the covered area.

Up to six repeaters can be registered to the telephone base. There can be two repeaters in series going between the base and handsets. The first repeater can be up to 950 feet away from the base. The second repeater can be up to 950 feet away from the first repeater. Handsets work up to 950 feet from the base or any repeater, so with two repeaters in series, handsets work up to 2850 feet away from the base. The figure below shows an example of how you might choose to setup your system.

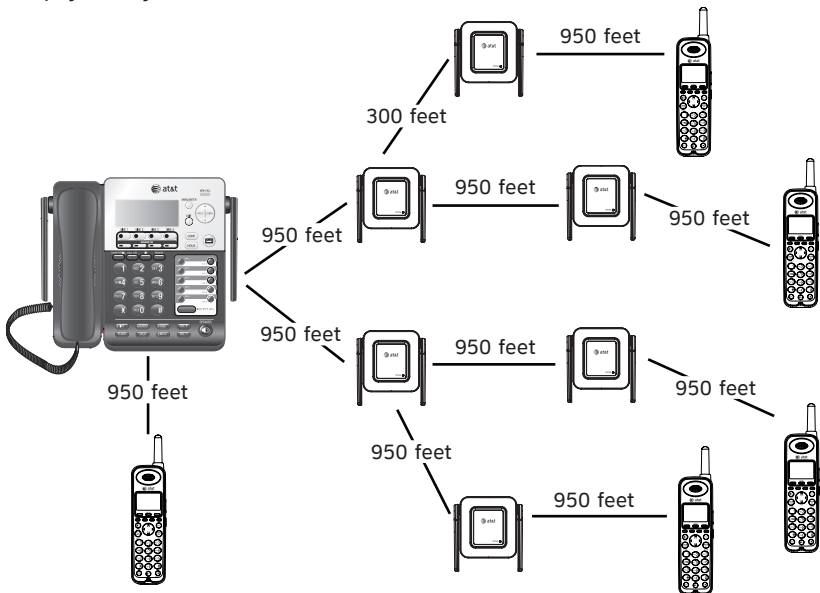


Figure 2: Planning repeater placement

Registration

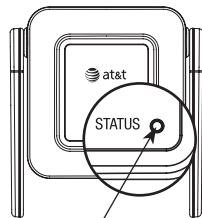
You should register your repeaters to the telephone base before choosing locations for them in the building.



NOTE: You can register a repeater to an SB67118 telephone base without deregistering it from a previous telephone base. New registrations overwrite any previous repeater registrations.

Automatic repeater registration

1. Unplug the repeater from AC power.
2. On the telephone base, press **MENU/ENTER**.
3. Scroll down to **Registration** and press **MENU/ENTER**.
4. Press **MENU/ENTER** again to select **Register HS**. The telephone base screen shows **Handset registering** during registration.
5. While the telephone base screen shows **Handset registering**, the repeater to AC power. The **STATUS** indicator light on the repeater flashes slowly.
6. The **STATUS** indicator light becomes solidly lit when registration is successful. It takes about 60 seconds to complete the registration.



STATUS indicator light



NOTES:

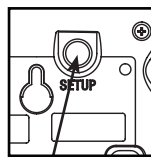
1. A registered repeater does not count as an extension and does not have an assigned extension number within the telephone system.
2. For complete registration instructions of SB67118 telephone base, please refer to the manual provided with your AT&T SB67118 product, or visit

www.telephones.att.com to download the manual.

Registration

Manual repeater registration

1. Plug in the repeater to AC power.
2. On the telephone base, press **MENU/ENTER**.
3. Scroll down to **Registration** and press **MENU/ENTER**.
4. Press **MENU/ENTER** again to select **Register HS**. The telephone base screen shows **Handset registering** during registration.
5. The **STATUS** indicator light on the repeater flashes slowly.
6. Press and hold the **SETUP** button at the bottom of the repeater for a few seconds. The **STATUS** indicator light becomes solidly lit when registration is successful. It takes about 60 seconds to complete the registration.



SETUP button

STATUS indicator light

Slow flash	The repeater is powered on and in idle mode waiting to be registered. -OR- The registered repeater is not connected to the telephone base. -OR- Your telephone base has no power.
Quick flash	The repeater is registering to the telephone base.
On	The repeater is successfully registered and in a normal operation mode.
Off	The repeater has no power.

Installation

After you have plugged in your repeaters in the locations you think are best, place a call from a cordless handset (AT&T SB67108) and while talking, move around the building to test the reception. You may want to adjust the position of repeaters to receive the best reception.

Plug the small end of the power adapter into the power jack on the front of the repeater and route the cord through the slot on the bottom of the repeater.

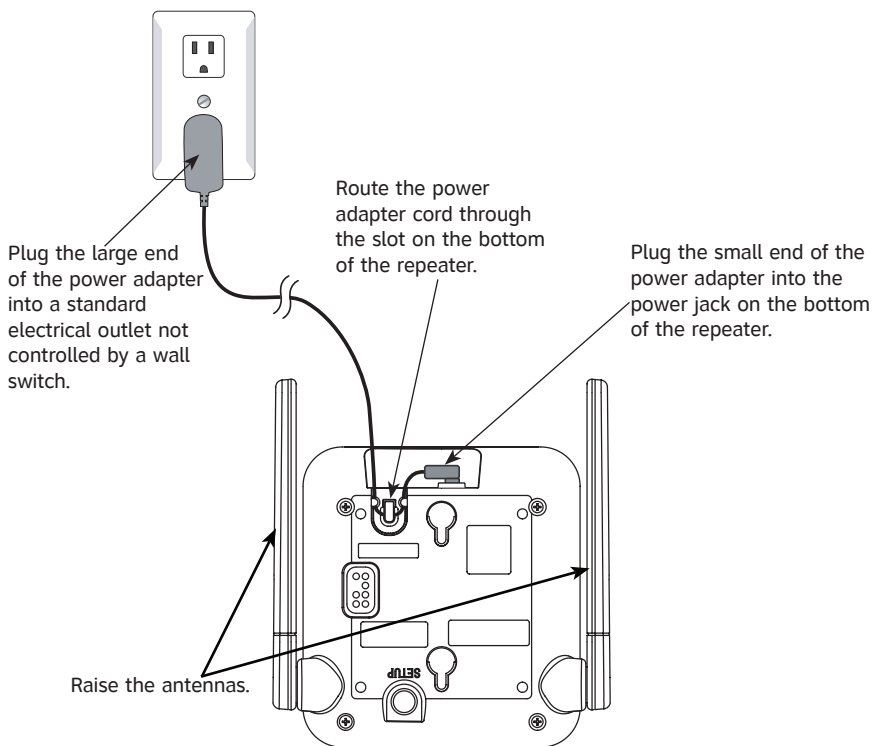


Figure 3: Connect the power adapter to the repeater

Installation

You can place the repeater on a tabletop. You can install your repeater on a wall or other object with the provided screws. Please use the recommended placement and installation tips as follows:

- The antennas need to be in a high location (not on the floor or under a desk) for reception.
- Maintain a minimum of 30 feet distance between each repeater.
- See page 2 for additional placement information.

If you place the repeater on a tabletop, plug the large end of the power adapter into a nearby electrical wall outlet and raise the antennas.

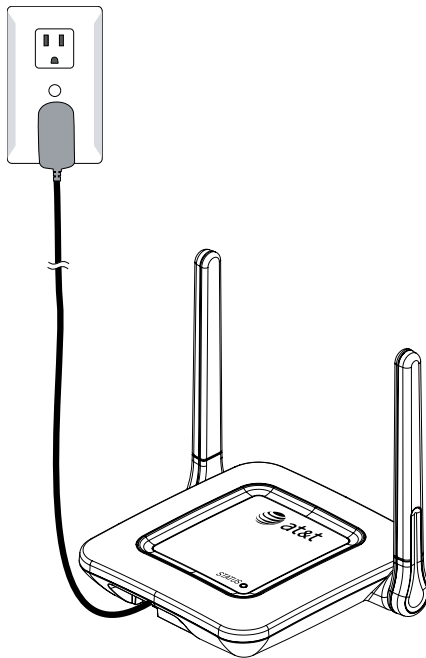


Figure 4: Tabletop installation

Installation

If you want to install your repeater on a wall or other object, use the provided screws. Professional assistance may be required to install screws on the wall. Then plug the large end of the power adapter into a nearby electrical wall outlet and raise the antennas.

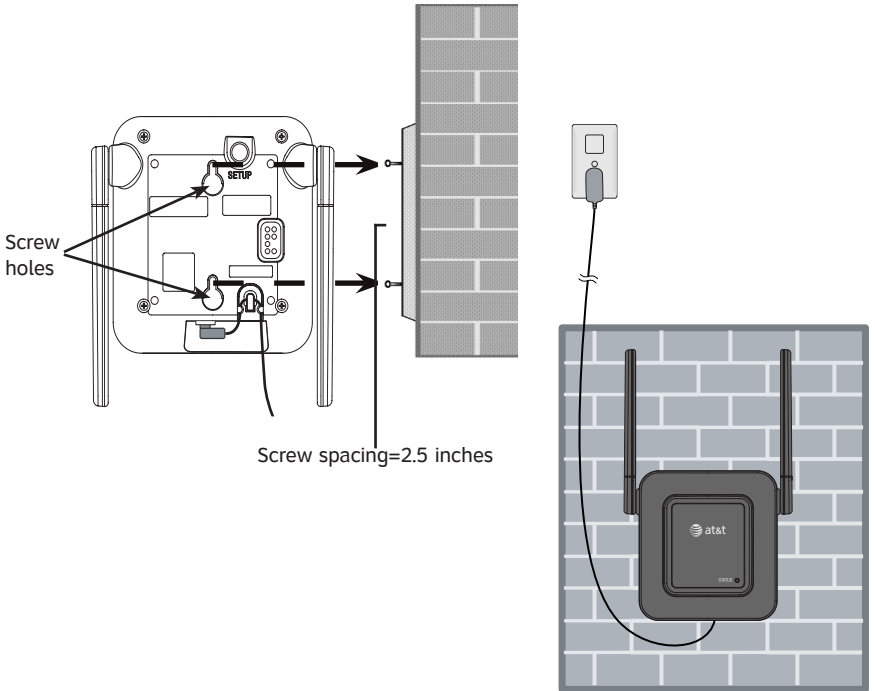


Figure 5: Wall installation



NOTE: The power adapter is intended to be correctly oriented in a vertical or floor mount position. The prongs are not designed to hold the plug in place if it is plugged into a ceiling, under-the-table or cabinet outlet.

Troubleshooting

If you have difficulty operating this repeater, try the suggestions below. To contact Customer Service, purchase accessories or obtain replacement parts, visit our website at **www.telephones.att.com** or call **1 (888) 915-2007**. In Canada, dial **1 (866) 288-4268**. Please retain your receipt as your proof of purchase.

My repeater doesn't work at all.

- Make sure the power cord is securely plugged in.
- Make sure the **STATUS** indicator light is on. If the light is off or flashing, the repeater is not registered or the base has no power (see page 3).
- Make sure you raise the antennas of your repeater.
- Make sure you install the repeater in a high location (not on the floor or under a desk) for better reception.
- Do not place the repeater near a microwave oven or on the same electrical outlet. You might experience decreased performance while the microwave oven is operating.
- Other electronic products can cause interference to your repeater. Try installing your repeater as far away from the following electronic devices as possible: television sets, VCRs, or other cordless telephones.
- You may need to walk to the location of your repeater and initiate a call from your cordless handset (SB67108) to test if the reception of the cordless handset is good. If the performance is less than expected, you may need to relocate your repeater closer to the telephone base. Then try placing a call on the cordless handset again.

Troubleshooting

My repeater cannot register to my telephone base.

- First try all the suggestions on the previous page.
 - Make sure your telephone base is model AT&T SB67118 DECT 6.0 4-line corded/cordless telephone system.
 - Carefully follow the registration instructions on page 3 of this user's manual.
 - Make sure your telephone base is within 950 feet of the repeater. If registration does not work place the repeater next to the base and try registering again.
-

My repeater flashes slowly again after registration.

- First try all the suggestions on the previous page.
 - Make sure the telephone base has power.
-

I cannot deregister my repeater from the previous telephone base.

- You can register a repeater to an SB67118 telephone base without deregistering it from a previous telephone base. New registrations overwrite any previous repeater registrations.
-

Power failure recovery.

- Your registered repeater automatically links to the telephone base wherever power is restored. The **STATUS** indicator light is on when there is a valid link.

General product care

To keep the repeater working and looking good, follow these guidelines:

- Avoid putting it near appliances and devices that generate electrical noise (motors, fluorescent lights, etc.)
- **DO NOT** expose it to direct sunlight or moisture.
- Avoid dropping the repeater.
- Clean with a soft cloth.
- Never use a strong cleaning agent or abrasive powder because this will damage the finish.
- Retain the original packaging in case it is necessary to ship it at a later date.

Technical specifications

RF frequency band	1921.536 MHz — 1928.448 MHz
-------------------	-----------------------------

Channels	5
----------	---

Operating temperature	32°F — 122°F 0°C — 50°C
-----------------------	----------------------------

Repeater voltage (AC voltage, 60Hz)	110 — 120 Vrms
--	----------------

Repeater voltage (AC adapter output)	6VDC @600mA
---	-------------

Repeater operating range

This repeater operates within the maximum power allowed by the Federal Communications Commission (FCC). Even so, this product can communicate over only a certain distance — which can vary with the locations of the telephone base, the weather, and the construction of your building.