

Source

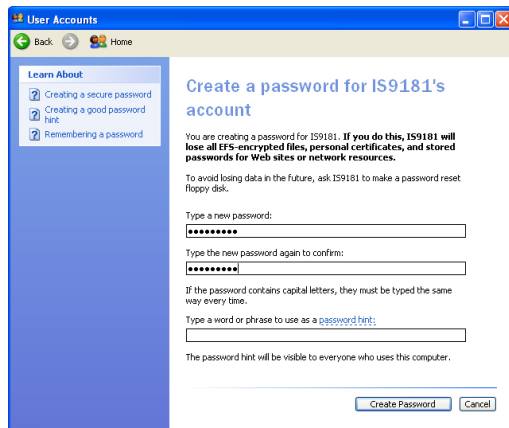
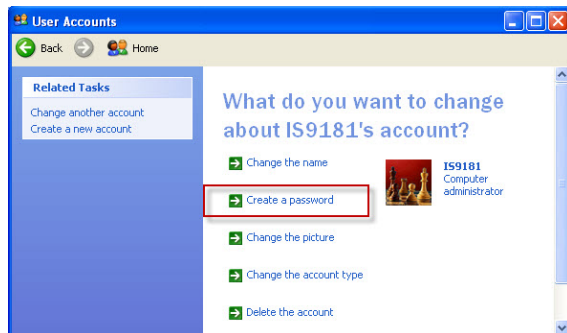
Computer setup for My Music - Windows

Create a new user account for Windows XP

5. Create a password. Click on the user icon next to the IS9181 user account, then click **Create a password**.

To ensure the security of your computer we recommend that you create a password for the IS9181 user account. The password should have a minimum of four characters and a maximum of 16 characters. The password cannot include spaces, commas or equal signs.

Note: If you are going to create the user account on multiple computers then you must use the same password.

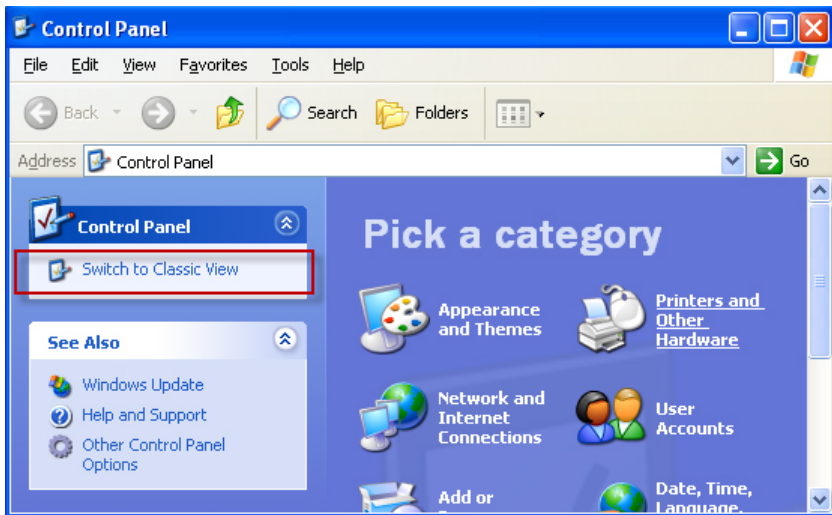


Source

Computer setup for My Music - Windows

Create a new user account for Windows XP

If you want to switch back to Classic View click on **Switch to Classic View**.



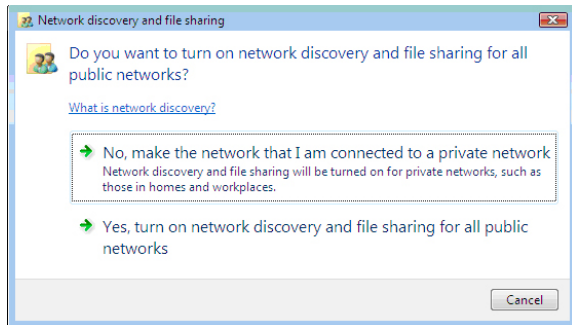
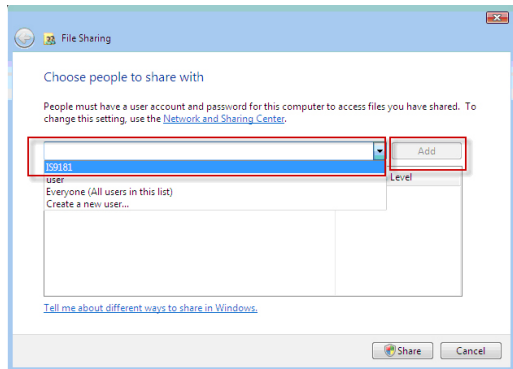
Source

Computer setup for My Music - Windows

Share a folder on Windows Vista

For the IS9181 to access the music on your computer, you must share the folder where the music is located.

1. Right click on the folder you wish to share.
 2. Click on **Share**.
 3. Select user **IS9181** and click **Add**.
 4. Click **Share**.
 5. The **User Account Control** prompts for your permission, click **Continue**.
- If the following message pops up, click: **No, make the network that I am connected to a private network.**

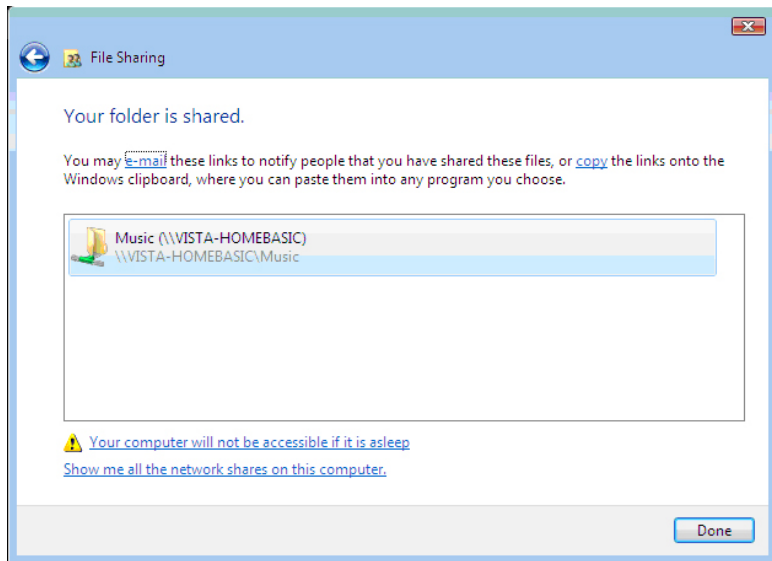


Source

Computer setup for My Music - Windows

Share a folder on Windows Vista

6. The computer may take a few minutes to setup the network access. When the setup is complete and you see the confirmation screen shown below, click **Done**.



Source

Computer setup for My Music - Windows

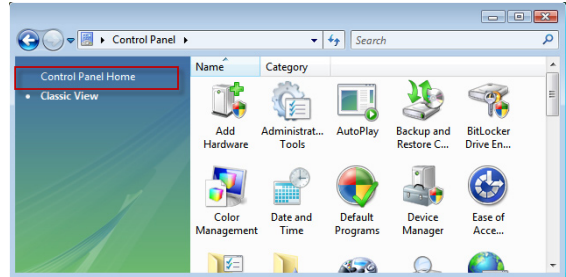
Create new user account in Windows Vista

You must create a new user account in Windows Vista for the IS9181 to access the music on your computer. If you would like to access music files on multiple computers, you must create the same user account with the same password on each computer. When you boot up your computer, you will see the IS9181 user account on the login page.

1. Click the **Start** menu then click **Control Panel**.

The instructions are given in the Category View (the Windows default) as shown below.

If your Control Panel is in Classic View as shown below, click Switch to Category View.

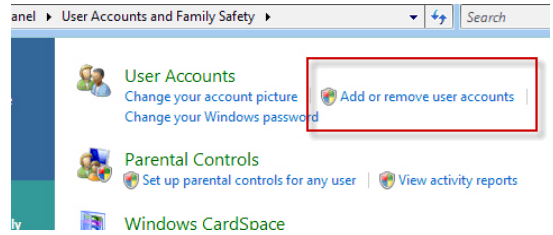
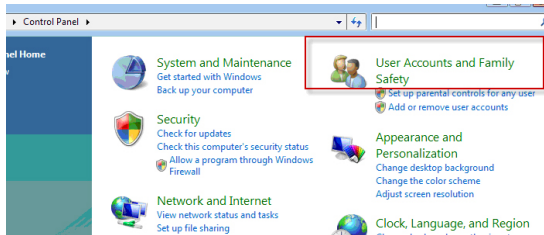


Source

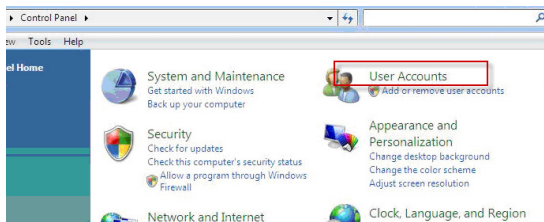
Computer setup for My Music - Windows

Create new user account in Windows Vista

2. Click **User Accounts and Family Safety** or **User Accounts**.
3. Click **Add or remove user accounts**.



-OR-



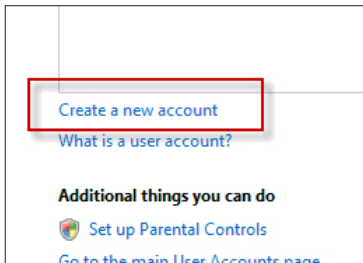
4. The **User Account Control** prompts for your permission, click **Continue**.

Source

Computer setup for My Music - Windows

Create new user account in Windows Vista

5. Click **Create a new account**.

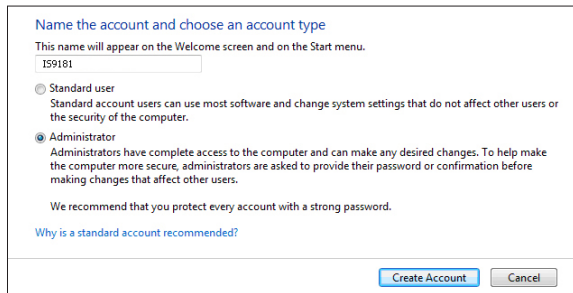


6. You **MUST** Enter **IS9181** (the “IS” must be capitalized) as the new account name.

7. Select **Administrator** as the account type.

8. Click **Create Account**.

Note: If you are going to create the IS9181 user account on multiple computers then you must use the same account name.



Source

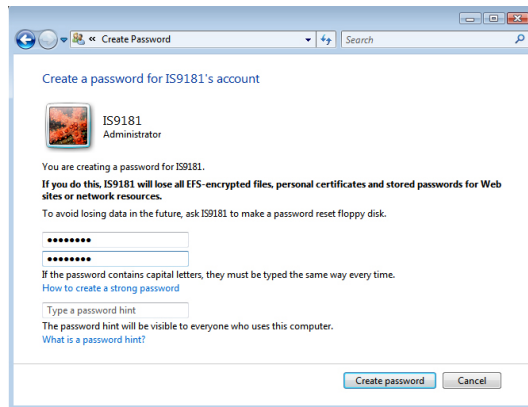
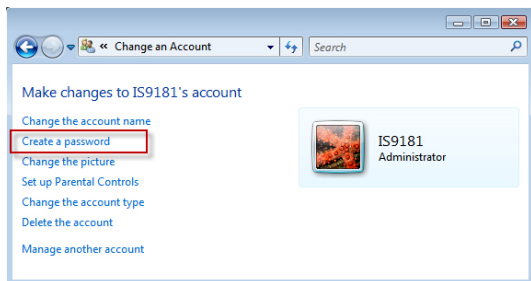
Computer setup for My Music - Windows

Create new user account in Windows Vista

9. Create a password. Click on the user icon next to the IS9181 user account. Then click **Create a password**.

To ensure the security of your computer we recommend that you create a password for the IS9181 user account. The password should have a minimum of four characters and a maximum of 16 characters. The password cannot include spaces, commas or equal signs.

Note: If you are going to create the user account on multiple computers, then you must use the same password on each.

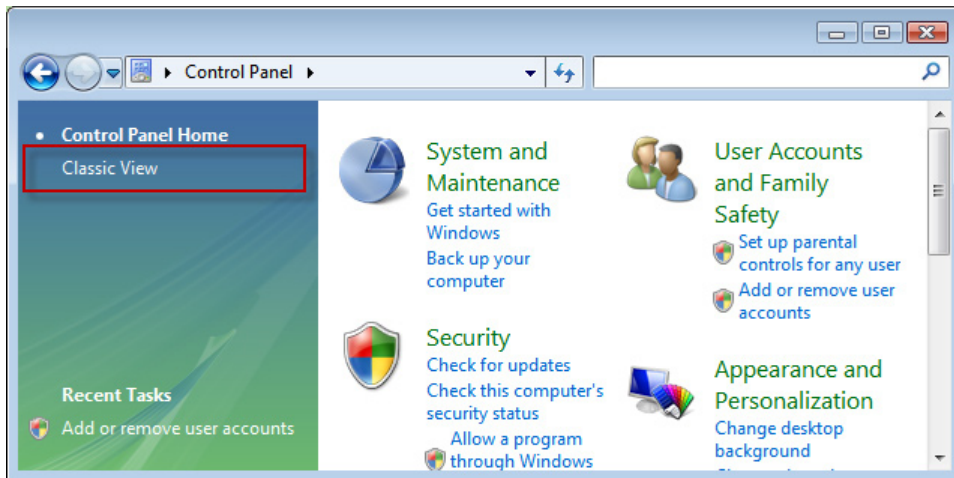


Source

Computer setup for My Music - Windows

Create new user account in Windows Vista

If you want to switch back to Classic View click on **Switch to Classic View**.



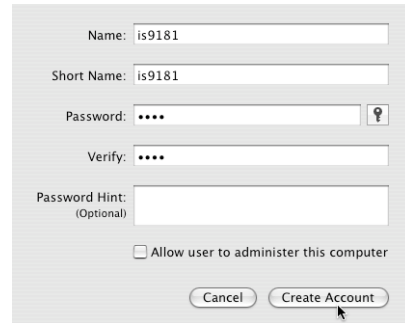
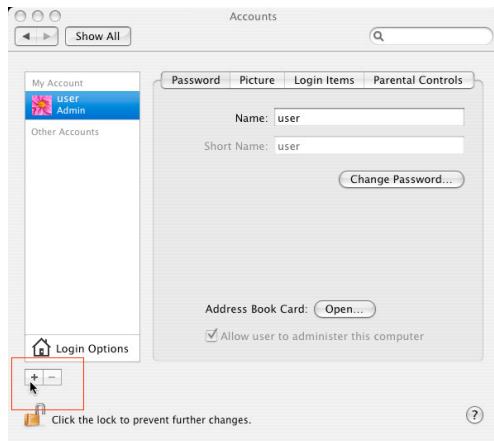
Source

Computer setup for My Music - Mac OS 10.4

Create the IS9181 user account and share the folder

1. Under the Apple menu, select System Preferences and choose the Accounts pane.
2. Click the “+” symbol to add an account. You may need to click the lock icon on the bottom left to edit the settings.
3. You must name the account **IS9181** and create a password. This user does not have to administer the computer.

The password should have a minimum of four characters and a maximum of 16 characters. The password cannot include spaces, commas or equal signs.

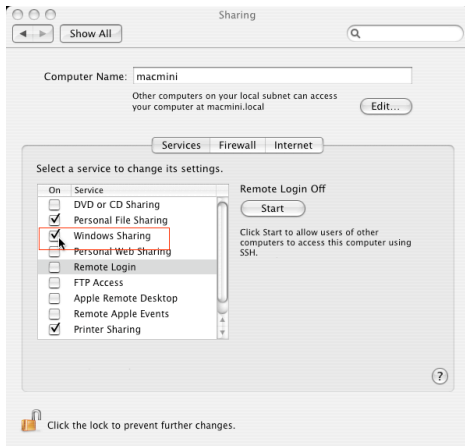


Source

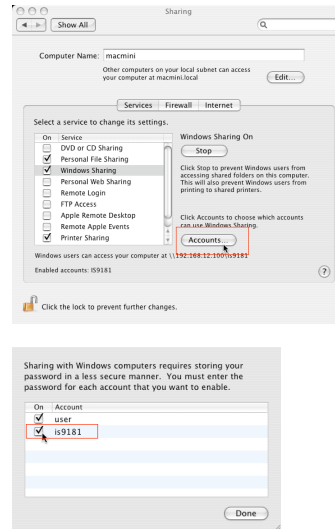
Computer setup for My Music - Mac OS 10.4

Create the IS9181 user account and share the folder

4. After the account is created, open the Sharing Pane under System Preferences.
5. Ensure “Windows Sharing” is checked. You may need to click the lock icon on the bottom left to edit the settings.



6. After checking the “Windows Sharing” box, click the Accounts... button to enable the IS9181 account.

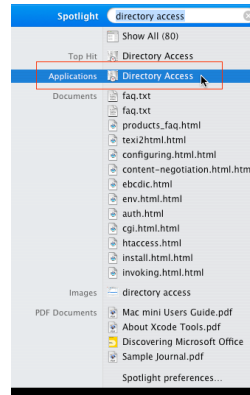
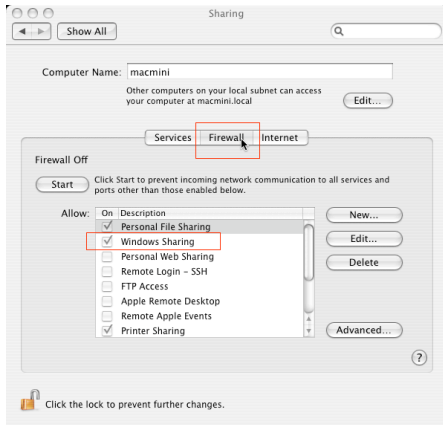


Source

Computer setup for My Music - Mac OS 10.4

Create the IS9181 user account and share the folder

7. After enabling the IS9181 account to allow windows sharing, choose the Firewall button of the “Sharing” pane. If your Firewall is on, ensure that the “Windows Sharing” box is checked. (Note: The graphic below shows the Firewall to be off).
8. After setting up sharing, you may now quit System Preferences.
9. Now, use Spotlight (the blue magnifying glass), found on the top right corner of your desktop, to find the Directory Access Application. Launch the Directory Access application.

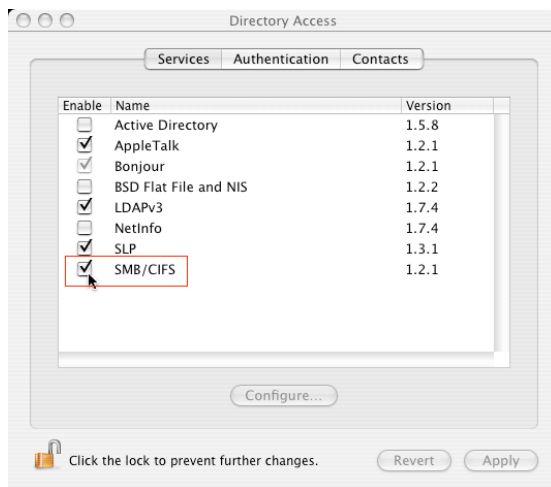


Source

Computer setup for My Music - Mac OS 10.4

Create the IS9181 user account and share the folder

10. In Directory Access, ensure SMB/CIFS is checked and selected.



Source

Computer setup for My Music - Mac OS 10.4

Create the IS9181 user account and share the folder

11. You will need to move your music to the IS9181 account in order for the IS9181 to access the music. You may make duplicates of the music you wish to play in the IS9181 music folder.

-OR-

You can move your entire music collection to the IS9181 account by following these instructions:


1. While logged into the new IS9181 account, control click the music folder in the users root directory and select **Get Info**.
2. At the bottom of the dialog box there is a **Ownership & Permission** section.
3. Click the arrow for **Details** to expand this section.
4. Click the **Lock** next to the Owner drop-down and enter the IS9181 user password when prompted.
5. Change the Group drop-down box to the original user account name, which will be available in the drop-down list.
6. Change the Access drop-down to Read & Write.
7. Click the **Apply to enclosed items** button at the bottom of the dialog box.
8. Enter administrator or original password when prompted.
9. Logout of the IS9181 account.
10. Log into the administrator or original user account.

Source

Computer setup for My Music - Mac OS 10.4

Create the IS9181 user account and share the folder

11. Open up two Finder windows each looking at the music directories for both accounts. The IS9181 music folder should no longer be “X” out and inaccessible.
12. Drag the iTunes folder from the original user account music folder to the IS9181 account music folder. This will copy the music. If you do not have the room on your hard drive to copy the music, you can copy the music to an external hard drive. Then delete the music from your computer. Copy the music back to the computer on in the IS9181 music folder.
13. Open iTunes.
14. Open iTunes Preferences and select the **Advanced** tab.
15. Ensure that the **Copy files to iTunes Music folder when adding to library** is selected.
16. Click **Change** next to iTunes Music folder location.
17. Create a path to the IS9181 account music folder and iTunes music will point to that folder.

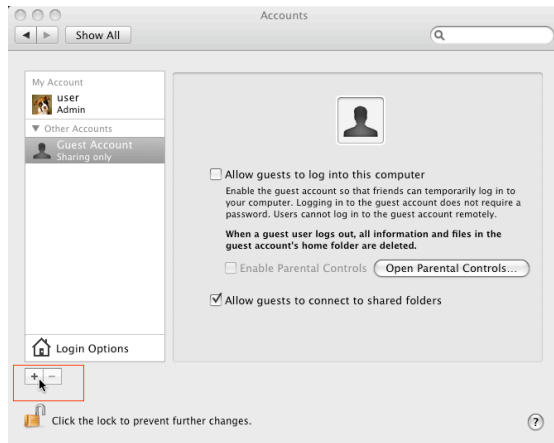
Now the IS9181 account houses all of your music. Any new music added in iTunes will show on the IS9181 after you select  **Update Computer list**. You can use iTunes as normal and access all the content through the IS9181.

Source

Computer setup for My Music - Mac OS 10.5

Create the IS9181 user account and share the folder

1. Under the Apple menu, select System Preferences and choose the Accounts pane.
2. Click the “+” symbol to add an account. You may need to click the lock icon on the bottom left to edit the settings.



3. You must name the account IS9181 and create a password. The account can be a standard or admin type.

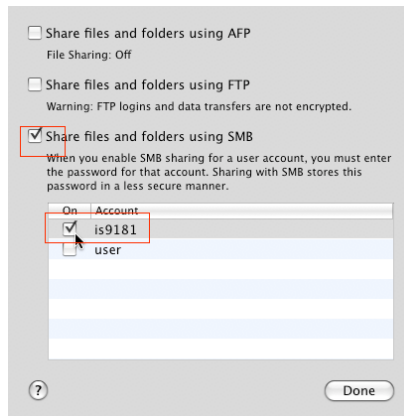
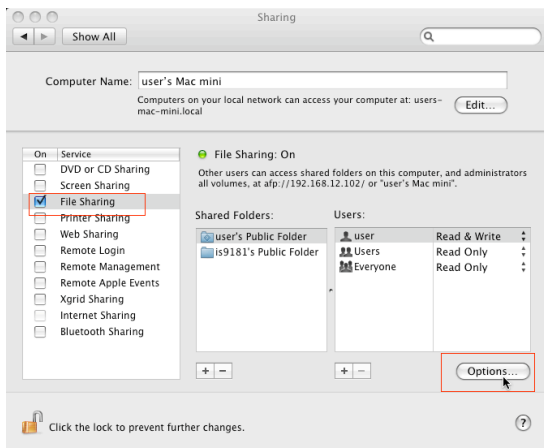
The password should have a minimum of four characters and a maximum of 16 characters. The password cannot include spaces, commas or equal signs.

Source

Computer setup for My Music - Mac OS 10.5

Create the IS9181 user account and share the folder

4. Select the Sharing pane from the System Preferences application. Ensure File Sharing box is checked and selected. Click the Options... button.
5. When you press the “Options...” button, you will be able to select the type of file sharing. Ensure the “Share files and folders using SMB” box is checked, and check the box for the user IS9181. Press the “Done” when finished.



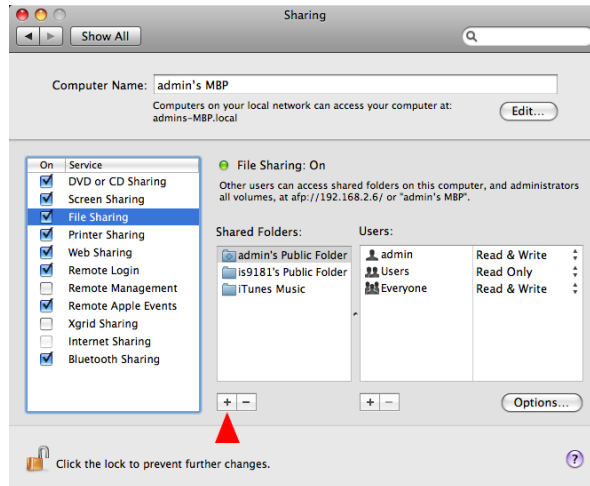
Source

Computer setup for My Music - Mac OS 10.5

Create the IS9181 user account and share the folder

6. Click the + button under the “Shared Folder” pane. Navigate to your existing iTunes or other music folder.

NOTE: it is important that you drill down to the folder that your music is in, not the first iTunes folder which has some playlist information.

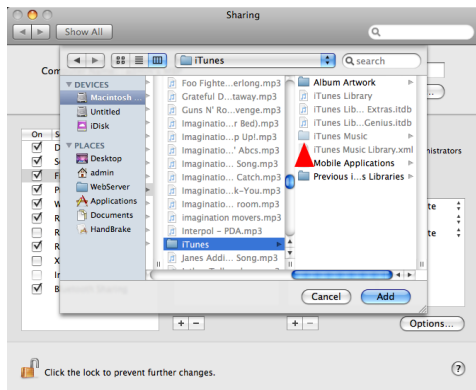


Source

Computer setup for My Music - Mac OS 10.5

External USB & Firewire drives

It is possible to share files from external drives using the same method. You have to setup the desired folder on the external drive as a shared folder. Note, however, that external drives are not accessed until you physically (not remotely) log into the Mac, so simply turning on the computer is not enough to share the files, you must log in.



You can now close the System Preferences. On the IS9181 go to My Music and select Update Computer List and reconnect with the desired Mac. Your music folder will now be available and you can play all unprotected music that you may have in the folder you have chosen.

Source

Access your music from the IS9181

1. On your IS9181, press **SOURCE**.
2. Rotate the dial to **My Music** and press **SELECT**.
3. Rotate the dial to **Computer Password** and press **SELECT**.
4. Press **SELECT** to enter password.
5. Enter the password you selected for the IS9181 user account by rotating the dial and pressing **SELECT** for each character. Repeat this process until the entire password is displayed. Rotate the dial to highlight **DONE**, and then press **SELECT**.

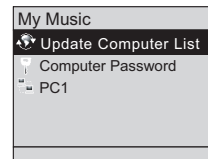
IMPORTANT: If your IS9181 cannot find the computer with your music files, a firewall program may be blocking access. Temporarily disable the firewall, or consult the firewall software user's manual to allow ICMP echo requests. Visit <http://www.vtechphones.com/IS9181> for help with firewall software versions.

Play music on your computer

To play music stored on your computer:

1. On your IS9181, press **SOURCE**.
2. Rotate the dial to highlight **My Music** and press **SELECT**.
3. Press **SELECT** to update computer list. The IS9181 searches and shows a list of computers on the same network as the IS9181.

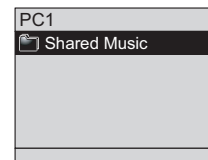
NOTE: Other devices connected to your network such as printers may show on the computer list.



Source

Play music on your computer

4. Rotate the dial to highlight the desired computer and press **SELECT**. All shared folders on the computer appear.
5. Continue to browse the folders until you reach the music files. Only supported music files (see page 26) appear.
6. Rotate the dial to highlight the desired music file and press **SELECT**. All supported files in the same folder play sequentially.



The IS9181 will automatically repeat all the songs that are in the folder you are playing from. The IS9181 can only play the files in one folder at a time. So if you choose a folder of Beatles music with sub-folders of albums, the albums will not play. You must choose each album to play them. However, if all the Beatles songs are in one folder, you can play all the songs. The IS9181 cannot access playlists unless the songs are all in one folder together.

NOTES:

- If you make any changes to your music files on your computer, select **Update Computer list** to see the changes.
- If you do not see the computer or folder you want, try **Update Computer list** again.

Press **BACK** to return to the previous screen. Press **SOURCE** to go back to the top source menu. If you are playing **My Music** and you change to another source, when you select **My Music** again the same file plays.

If you have chosen **My Music** as your source and you press **MENU**, one additional item appears at the top of the menu:



- **Now Playing** - returns you to the **My music** playing screen.

Source

FM radio



Play FM radio station

To listen to FM radio stations:

1. With the IS9181 turned on, press **SOURCE**.
2. Rotate the dial to highlight **FM Radio** and press **SELECT**.
3. Press  to seek the next lower FM frequency with sufficient signal strength. Press  to seek the next higher FM frequency with sufficient signal strength.

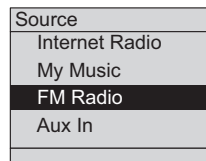
-OR-

Rotate the dial counter clockwise to increase the FM frequency by one step.
Rotate the dial clockwise to decrease the FM frequency by one step.

To mute the sound, press . To resume the sound, press  again.

If you have chosen FM radio as your source and you press **MENU**, two additional items appear at the top of the menu:

- **Now Playing** - returns you to the FM radio playing screen.
- **Add to Favorites** - see page 58 for instructions.



Source

Aux in

External audio device connection

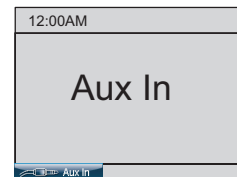
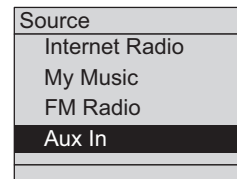
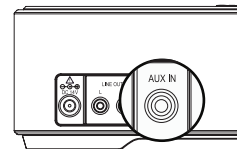
The IS9181 enables you to listen to the audio from any source with a standard headset jack connection.

1. Connect one end of the supplied auxiliary audio cable to the headset jack (audio/line out) of your device, and plug the other end of the cable into the **AUX IN** port on the back of the IS9181.
2. With the IS9181 turned on, press **SOURCE**.
3. Rotate the dial to select **Aux In** and press **SELECT**.
4. **Aux In** appears on the screen. You can now play the music on your external audio device, and listen to it through the IS9181.

Please note that the IS9181 does not provide power or control to your external audio device.

You can adjust the listening volume using the **VOL+ / VOL-** on the IS9181 and/or the volume control of your external audio device.

If the sound is distorted, try decreasing the volume on the external audio device.



Favorites

Add to favorites

When either an Internet radio station or FM radio station is playing, you can add the current station that is playing to your favorites for easy access.

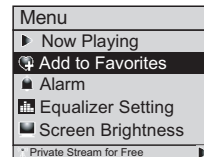
The favorites entries are sorted in numeric order and duplicate entries are allowed.

The maximum number of favorites that can be added for each source:

- **Internet Radio:** 100 favorites
- **FM Radio:** 20 favorites

To add an **Internet Radio** or **FM Radio** station to your favorites:

1. When you are playing an Internet radio or FM radio station, press **MENU**.
2. Rotate the dial to highlight **Add to Favorites** and press **SELECT**. The current station that is playing is automatically added to the favorites.



Favorites

Play favorites

To play your favorites, you must first select the source. To play your favorites:

1. With the IS9181 turned on, press **SOURCE**.
2. Rotate the dial to highlight the desired source (**Internet Radio**, or **FM Radio**) and press **SELECT**.
3. Press **FAVORITES** and a list of saved entries for that source appears.
4. Rotate the dial to highlight the desired favorite and press **SELECT**. The favorite plays.

note

- If the source is not selected first, **No Source selected** appears when you press **FAVORITES** on the IS9181.

note

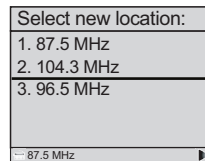
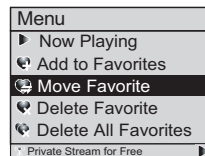
- To go back to the screen currently playing, press **MENU** and select **Now Playing**.

Favorites

Move favorites

You can organize or move the favorites. To move the favorite:

1. With the IS9181 turned on, press **SOURCE**.
2. Rotate the dial to highlight the desired source (**Internet Radio**, or **FM Radio**) and press **SELECT**.
3. Press **FAVORITES** and a list of saved favorites for that source appears.
4. Rotate the dial to highlight the desired favorite to be moved and press **MENU**.
5. Rotate the dial to highlight **Move Favorite** and press **SELECT**.
6. A red line shows on the favorites screen. Rotate the dial to position the red line where you want to move the favorite (the favorite will be inserted by the red line) and press **SELECT**.



Favorites

Delete favorites

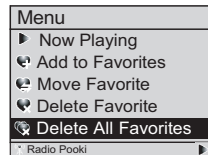
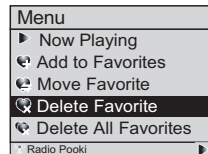
You can delete one favorite or all favorites. To delete favorites:

1. With the IS9181 turned on, press **SOURCE**.
2. Rotate the dial to highlight the desired source (**Internet Radio**, or **FM Radio**) and press **SELECT**.
3. Press **FAVORITES** and a list of saved favorites for that source appears.
4. Rotate the dial to highlight the desired favorite to be deleted or highlight any favorite if you want to delete all the favorites and press **MENU**.
5. To delete a favorite, rotate the dial to highlight **Delete Favorite** and press **SELECT**.

-OR-

To delete all favorites, rotate the dial to highlight **Delete All Favorites** and press **SELECT**.

6. You are prompted to confirm that you want to delete the favorite or all favorites. To delete the favorite or all favorites, rotate the dial to highlight **YES** and press **SELECT**. To cancel the deletion, rotate the dial to highlight **NO** and press **SELECT**.

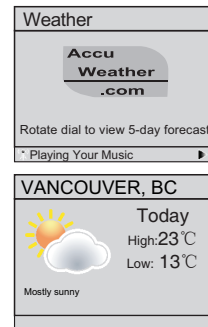


Weather (Info)

Weather forecast

After you have set up the weather feature (see page 19), press **WEATHER** (called **INFO on some models**) and rotate the dial to view the 5-day weather forecast.

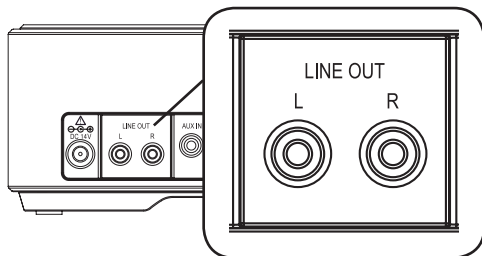
If you do not press a key within one minute, the IS9181 will return to your playing screen.



Optional external audio system connection

The IS9181 can send music being played to an external audio system for more control over the sound quality. To connect the IS9181 to an external audio system:

1. Connect one end of audio cables (RCA type, not included) to the **LINE OUT** jacks on the back of the IS9181, matching the cable colors.
2. Connect the other end of the cables to the respective audio input jacks on the external audio system.
3. You can now play music from your IS9181 and listen to it through the external audio system.



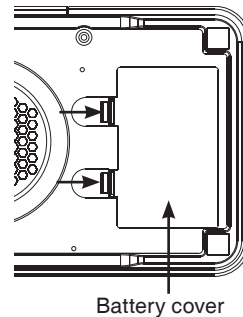
note

- If you use AA rechargeable batteries, the IS9181 does not recharge the batteries.

Optional battery installation

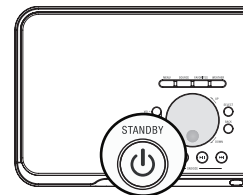
You can install AA alkaline or rechargeable batteries (sold separately) to use your IS9181 as a portable radio. To install the batteries:

1. Press the tabs on the battery cover on the bottom of the IS9181 and open the battery door.
2. Insert six new AA alkaline or rechargeable batteries, matching the + and - signs engraved inside the battery compartment.
3. Replace the battery cover. It clicks into place when attached correctly.



When powered by batteries, the IS9181 operates the same as when it is plugged into an AC power outlet with the following exceptions:

- A battery icon appears on the status bar at the top of the screen (see page 6).
- The maximum speaker volume level is 25.
- When the IS9181 goes into standby mode, the IS9181 automatically shuts down and the screen turns black after one minute to save battery power (power save mode). To wake the IS9181 from power save mode, press **STANDBY**.



Optional battery installation

- The batteries do not maintain the clock setting. If your clock is set manually and the IS9181 loses power, then the setting is lost. We recommend you have the clock set by the Internet (see page 17), so when the power returns, the clock setting will be automatically set by the Internet.
- The alarm clock does not work on battery power. The alarm clock must have AC power to work.

Troubleshooting

If you have difficulty operating your IS9181, please try the suggestions below. For Customer Service, visit our website at www.vtechphones.com/IS9181, or call VTech Communications at 1 (800) 595-9511.

General

- You cannot access any of the features of the IS9181 when it is in standby (idle) mode. Power up the unit by pressing **STANDBY**.
- Reset procedure: Unplug the power cord and remove all batteries (if used) IS9181. Wait approximate 30 seconds, then plug the cord back in and re-install the batteries (if used).
- When powered by batteries and the IS9181 goes into standby mode, the IS9181 automatically shuts down and the screen turns black after one minute to save battery power (power save mode). To wake the IS9181 from power save mode, press **STANDBY**.
- After pressing the **STANDBY** key, you cannot de-activate the IS9181 by immediately pressing the **STANDBY** key again. Wait at least 3 seconds between key presses.

Networking

- Your wireless network name and password **MUST** match what you enter in the IS9181. Check that they are entered exactly the same (including capitalization and special characters).
- If the SSID Broadcast is turned OFF on certain brands of wireless routers, the IS9181 will not be able to connect during setup. Refer to your wireless router user's manual for instructions to turn ON the SSID Broadcast during the IS9181 wireless network setup process. Once the IS9181 successfully connects to your wireless router, the SSID Broadcast can be turned OFF again.

Troubleshooting

Networking

- Make sure your wireless router does not restrict connection by particular MAC addresses (MAC filtering). Refer to your wireless router's user manual for details.

Remote control

- Point the remote directly at the IS9181 display.
- Check to make sure the remote control's battery is properly installed.
- Try replacing the remote control's battery.

Clock/alarm

- If the clock is one hour off when set to **Auto (from Internet)** mode, check that the daylight saving option is set correctly.

Internet radio

- Check that your Internet and wireless network are working.
- Use your computer to play the Internet radio station stream via the broadcasting website (page 24). If the station plays on your computer, try to reset the IS9181 and reconnect to the station.
- If you experience a slow response when browsing the Internet radio directory, buffering, or choppy audio play. Reset the IS9181, WiFi router, and DSL or Cable modem by removing power for 30 seconds.
- If an Internet radio station is not available, the station might not be broadcasting at this time, or the station might have reached its maximum number of listeners/subscribers. Often if you try again in a few minutes, you will be connected to the station.

Troubleshooting

Internet radio

- A station disappeared from the list or does not work after repeated attempts to listen over several days. When a station stops broadcasting on the Internet, we remove the station from the list. We constantly check the stations to see if they are on the air, when a station restarts broadcasting we put them back in our list of stations.
- If a station has changed their management, name, or the type of music they play, you may need to search for it again.
- You cannot find a specific station on our list. Go to www.vtechphones.com/IS9181 and create an account for the IS9181. The online account allows you to search for a station by name or call letters. You can also add a station by using the station URL. See page 24 for information.
- Your IS9181 can play many stations and streaming formats, but there are always some stations that will not be able to play or choose not to be on our list.

My music

- Check that your computer is turned on and connected to the same network as the IS9181. Make sure your computer is working properly - you may need to reboot/restart your computer.
- Make sure that you have created a user account for the IS9181 on your computer and that the folder with your music files is properly shared (see pages 28-53).
- Supported files extension types are: mp3, mp4, m4a, ra, rm, rmvb, and wma.
- WAV format music files are not supported.
- Follow the instructions on page 54 for entering the Computer Password. The Computer Password and the IS9181 user account password must be the same. The password cannot include spaces, commas or equal signs.

Troubleshooting

My music

- If your IS9181 cannot find the computer with your music files, there may be a firewall program installed which is blocking access. Temporarily disable the firewall, or see the firewall software user's manual to allow ICMP echo requests. Visit www.vtechphones.com/IS9181 for help with many firewall software versions.

FM radio

- If the FM radio reception is poor, try moving the IS9181 to a different part of your home and on a different electrical outlet.
- Keep the IS9181 at least two feet away from other electronic devices and appliances to reduce interference.

AUX IN

- If you have trouble with the volume, you can adjust the volume using the IS9181 and the volume control on your external device.
- Make sure the auxiliary cable is properly plugged into the IS9181 and your external device.

Favorites

- There are separate dedicated favorites lists for **Internet Radio** and **FM Radio**. You must choose a **SOURCE** before choosing **FAVORITES**.
- To add an Internet station to the favorites list, the station must be connected and playing.
- You are allowed a maximum of 100 favorites for **Internet Radio** and 20 for **FM Radio**. If you reach the maximum you will need to delete other favorites before you can add new ones.

Troubleshooting

WEATHER (INFO)

- While viewing the **Weather** screen, rotate the dial to view the five day forecast weather display.

Reception or interference

- If audio playback stops or the IS9181 shows **Buffering...**, move the IS9181 closer to your wireless router.
- Make sure the IS9181 is at least two feet away from computer equipment and other communication devices.
- Try changing the channel on your router. Refer to the router user manual for instructions.
- Do not install IS9181 near a microwave oven or on the same electrical outlet. You might experience decreased performance while the microwave oven is operating.

Important safety instructions

When using your IS9181 equipment, basic safety precautions should always be followed to reduce the risk of fire, electric shock and injury, including the following:

1. Read and understand all instructions.
2. Follow all warnings and instructions marked on the product.
3. Unplug this product from the wall outlet before cleaning. Do not use liquid or aerosol cleaners. Use a damp cloth for cleaning.
4. Do not use this product near water (for example, near a bathtub, kitchen sink, or swimming pool).
5. Do not place this product on an unstable table, shelf, stand or other unstable surfaces.
6. Slots and openings in the back or bottom of the unit are provided for ventilation. To protect it from overheating, these openings must not be blocked by placing the product on a soft surface such as a bed, sofa or rug. This product should never be placed near or over a radiator or heat register. This product should not be placed in any area where proper ventilation is not provided.
7. This product should be operated only from the type of power source indicated on the marking label. If you are not sure of the type of power supply in your home, consult your dealer or local power company.
8. Do not allow anything to rest on the power cord. Do not install this product where the cord may be walked on.
9. Never push objects of any kind into this product through the slots in the unit because it may touch dangerous voltage points or create a short circuit. Never spill liquid of any kind on the product.
10. To reduce the risk of electric shock, do not disassemble this product, but take it to an authorized service facility. Opening or removing parts of the unit other than specified access doors may expose you to dangerous voltages or other risks. Incorrect reassembling can cause electric shock when the product is subsequently used.
11. Do not overload wall outlets and extension cords.
12. Unplug this product from the wall outlet and refer servicing to an authorized service facility under the following conditions:
 - A. When the power supply cord or plug is damaged or frayed.
 - B. If liquid has been spilled onto the product.
 - C. If the product has been exposed to rain or water.
 - D. If the product does not operate normally by following the operating instructions. Adjust only those controls that are covered by the operation instructions. Improper adjustment of other controls may result in damage and often requires extensive work by an authorized technician to restore the product to normal operation.
 - E. If the product has been dropped and the unit has been damaged.
 - F. If the product exhibits a distinct change in performance.
13. The power adapter is intended to be correctly oriented in a vertical or floor mount position. The prongs are not designed to hold the plug in place if it is plugged into a ceiling or an under-the-table/cabinet outlet.

SAVE THESE INSTRUCTIONS

Maintenance

Taking care of your unit

Your IS9181 contains sophisticated electronic parts, so it must be treated with care.

Avoid rough treatment

Handle the unit gently. Save the original packing materials to protect your IS9181 if you ever need to ship it.

Avoid water

Your unit can be damaged if it gets wet. Do not use the handset outdoors in the rain, or handle it with wet hands. Do not install the IS9181 near a sink, bathtub or shower.

Electrical storms

Electrical storms can sometimes cause power surges harmful to electronic equipment. For your own safety, take caution when using electrical appliances during storms.

Cleaning your unit

Your unit has a durable plastic casing that should retain its luster for many years. Clean it only with a soft cloth slightly dampened with water or a mild soap. Do not use excess water or cleaning solvents of any kind.

Remember that electrical appliances can cause serious injury if used when you are wet or standing in the water. If the unit should fall into the water, DO NOT RETRIEVE IT UNTIL YOU UNPLUG THE POWER CORD FROM THE WALL.

Warranty

What does this limited warranty cover?

The manufacturer of this VTech Product warrants to the holder of a valid proof of purchase (“Consumer” or “you”) that the Product and all accessories provided in the sales package (“Product”) are free from defects in material and workmanship, pursuant to the following terms and conditions, when installed and used normally and in accordance with the Product operating instructions. This limited warranty extends only to the Consumer for Products purchased and used in the United States of America and Canada.

What will VTech do if the Product is not free from defects in materials and workmanship during the limited warranty period (“Materially Defective Product”)?

During the limited warranty period, VTech’s authorized service representative will repair or replace at VTech’s option, without charge, a Materially Defective Product. If we repair the Product, we may use new or refurbished replacement parts. If we choose to replace the Product, we may replace it with a new or refurbished Product of the same or similar design. We will retain defective parts, modules, or equipment. Repair or replacement of the Product, at VTech’s option, is your exclusive remedy. VTech will return the repaired or replacement Products to you in working condition. You should expect the repair or replacement to take approximately 30 days.

How long is the limited warranty period?

The limited warranty period for the Product extends for ONE (1) YEAR from the date of purchase. If VTech repairs or replaces a Materially Defective Product under the terms of this limited warranty, this limited warranty also applies to repaired or replacement Product for a period of either (a) 90 days from the date the repaired or replacement Product is shipped to you or (b) the time remaining on the original one-year warranty; whichever is longer.

What is not covered by this limited warranty?

This limited warranty does not cover:

1. Product that has been subjected to misuse, accident, shipping or other physical damage, improper installation, abnormal operation or handling, neglect, inundation, fire, water or other liquid intrusion; or
2. Product that has been damaged due to repair, alteration or modification by anyone other than an authorized service representative of VTech; or
3. Product to the extent that the problem experienced is caused by signal conditions, network reliability, or cable or antenna systems; or
4. Product to the extent that the problem is caused by use with non-VTech accessories; or
5. Product whose warranty/quality stickers, product serial number plates or electronic serial numbers have been removed, altered or rendered illegible; or
6. Product purchased, used, serviced, or shipped for repair from outside the United States of America or Canada, or used for commercial or institutional purposes (including but not limited to Products used for rental purposes); or

Warranty

7. Product returned without a valid proof of purchase (see item 2 below); or
8. Charges for installation or set up, adjustment of customer controls, and installation or repair of systems outside the unit.

How do you get warranty service?

To obtain warranty service in the United States of America, please call 1 (800) 595-9511. In Canada, please call 1 (800) 267-7377. NOTE: Before calling for service, please review the user's manual - a check of the Product's controls and features may save you a service call.

Except as provided by applicable law, you assume the risk of loss or damage during transit and transportation and are responsible for delivery or handling charges incurred in the transport of the Product(s) to the service location. VTech will return repaired or replaced Product under this limited warranty. Transportation, delivery or handling charges are prepaid. VTech assumes no risk for damage or loss of the Product in transit. If the Product failure is not covered by this limited warranty, or proof of purchase does not meet the terms of this limited warranty, VTech will notify you and will request that you authorize the cost of repair prior to any further repair activity. You must pay for the cost of repair and return shipping costs for the repair of Products that are not covered by this limited warranty.

What must you return with the Product to get warranty service?

1. Return the entire original package and contents including the Product to the VTech service location along with a description of the malfunction or difficulty; and
2. Include a "valid proof of purchase" (sales receipt) identifying the Product purchased (Product model) and the date of purchase or receipt; and
3. Provide your name, complete and correct mailing address, and telephone number.

Warranty

Other limitations

This warranty is the complete and exclusive agreement between you and VTech. It supersedes all other written or oral communications related to this Product. VTech provides no other warranties for this Product. The warranty exclusively describes all of VTech's responsibilities regarding the Product. There are no other express warranties. No one is authorized to make modifications to this limited warranty and you should not rely on any such modification.

State/Provincial Law Rights: This warranty gives you specific legal rights, and you may also have other rights, which vary from state to state or province to province.

Limitations: Implied warranties, including those of fitness for a particular purpose and merchantability (an unwritten warranty that the Product is fit for ordinary use) are limited to one year from the date of purchase. Some states/provinces do not allow limitations on how long an implied warranty lasts, so the above limitation may not apply to you. In no event shall VTech be liable for any indirect, special, incidental, consequential, or similar damages (including, but not limited to lost profits or revenue, inability to use the Product or other associated equipment, the cost of substitute equipment, and claims by third parties) resulting from the use of this Product. Some states/provinces do not allow the exclusion or limitation of incidental or consequential damages, so the above limitation or exclusion may not apply to you.

Please retain your original sales receipt as proof of purchase.

FCC Part 15

COMPLIANCE INFORMATION

Product Name: WiFi Internet Radio

Model Number: IS9181

This product contains FCC ID: EW780-6569-02

This product complies with Part 15 of the FCC Rules. Operation is subject to the following two conditions: (1) this product may not cause harmful interference, and (2) this product must accept any interference received, including interference that may cause undesired operation.

VTech Technologies Canada Ltd.

12111 Jacobson Way, Richmond, B.C., Canada V6W 1L5

IMPORTANT NOTICE: NO NOT MODIFY THIS PRODUCT

This product, when installed as indicated in the instructions contained in this manual, meets FCC requirements. Changes or modifications to this equipment not expressly approved by the party responsible for compliance could void user authority to operate the equipment.

CAUTION

IEEE 802.11b or 802.11g operation of this product in the U.S.A. is firmware-limited to channels 1 through 11.

- To comply with FCC RF exposure compliance requirement, separation distance of at least 20 cm must be maintained between the antenna of this product and all persons.
- This product and its antenna must not be co-located or operating in conjunction with any other antenna or transmitter.

FCC Part 15

FCC NOTICE

This product has been tested and found to comply with the requirements for a Class B digital device under Part 15 of the FCC Rules. These requirements are intended to provide reasonable protection against harmful interference in a residential installation.

This equipment generates, uses and can radiate radio frequency energy and, if not installed and used in accordance with the instructions, may cause harmful interference to radio communications. However, there is no guarantee that interference will not occur in a particular installation. If this equipment does cause harmful interference to radio or television reception, which can be determined by turning the product OFF and ON, the user is encouraged to try to correct the interference by one or more of the following measures:

- Reorient or relocate the receiving antenna.
- Increase the separation between the equipment and receiver.
- Connect the product into an outlet on a circuit different from that to which the receiver is connected.
- Consult the local retailer authorized to distribute this type of product or an experienced radio/TV technician for help.

IC RSS-210 (Canada)

PRODUCT

This product contains IC 1135B-80656902.

This product complies with RSS-210 of Industry Canada. Operation is subject to the following two conditions: (1) this product may not cause harmful interference, and (2) this product must accept any interference received, including interference that may cause undesired operation.

Industry Canada Notice

This Class B digital apparatus complies with Canadian ICES-003.

GPL License Information

Portions of the software associated with this product are open source, and fall within the scope of the GNU General Public License (GPL). Accordingly, those portions of code are available to the public, consistent with the requirements of the GPL, in either source code format or object code format, depending upon the nature of the code at issue. If you would like to exercise your right to receive the available code, please send a cashier's check, payable to VTech Communications, Inc., in the amount of \$10.00 (U.S.\$) to:

VTech Communications, Inc.,
9590 SW Gemini Drive, Suite 120
Beaverton OR 97008

ATTN: Information Technology Group / IS9181 GPL code request,

along with a written request for the available code. If your request does not fully comply with the foregoing requirements, VTech reserves the right to reject your request. Further, by requesting and receiving the available code, you release VTech, its affiliates, and its and their officers, directors, employees, and representatives ("VTech Parties") from any liability or responsibility relating to such code, and you acknowledge that the VTech Parties make no representations with respect to the origin, accuracy, usability, or usefulness of such code, and the VTech Parties have no responsibility to you whatsoever concerning the code, including without limitation any responsibility to provide explanation, support, upgrade, or any communication whatsoever. Your review or use of the available code is at your sole risk and responsibility.

Technical specifications

Size	314 mm (w) X 159 mm (d) X 88 mm (h)
Weight	1420 grams
Power requirements	14V DC
Operating temperature	32°F — 122°F 0°C — 50°C

IMPORTANT:

This product is protected by certain intellectual property rights of Microsoft Corporation. Use or distribution of such technology outside of this product is prohibited without a license from Microsoft or an authorized Microsoft subsidiary.

MPEG Layer-3 audio decoding technology licensed from Fraunhofer IIS and Thomson.

Portions of this software are included under license from RealNetworks, Inc.

Copyright 1995-2007, RealNetworks, Inc. All rights reserved.



©2008 RealNetworks, Inc. Patents Pending. All rights reserved. RealNetworks, Real, the Real logo, RealPlayer, and the RealPlayer logo are trademarks or registered trademarks of RealNetworks, Inc.

Index

A

- Access your music from the IS9181 54
- Add to favorites 58
- Alarm 11
- Aux in 57

B

- Before you begin 1

C

- Clock 17
- Computer setup for My Music - Mac OS 10.4 44
- Computer setup for My Music - Mac OS 10.5 50
- Computer setup for My Music - Windows 27
- Create a new user account for Windows 2000 29
- Create a new user account for Windows XP 33
- Create new user account in Windows Vista 39
- Create the IS9181 user account and share the folder 44, 50

D

- Delete favorites 61
- Determine the version of your Windows operating system 27

E

- Equalizer setting 13
- External audio device connection 57
- External USB & Firewire drives 53

F

- Favorites 58
- FCC Part 15 76
- FM radio 56

G

- Getting to know the IS9181 3

I

- IC RSS-210 (Canada) 78
- Important safety instructions 71
- Info 62
- Installation 7
- Internet radio 22
- IS9181 installation 7
- IS9181 layout 3
- IS9181 status icons 6

L

- Language 20

M

- Maintenance 72
- Menu 11
- Minimum requirements 1
- Move favorites 60
- My Music 26
- My Stations 24

O

- Optional battery installation 64
- Optional external audio system connection 63

P

- Parts checklist 2
- Play added Internet radio station 25
- Play favorites 59
- Play FM radio station 56
- Play Internet radio station 22
- Play music on your computer 54
- Product ID 21

Index

R

- Remote control installation 10
- Remote control layout 5
- Replace remote control battery 10

S

- Screen brightness 14
- Share a folder on Windows 2000 Professional 28
- Share a folder on Windows Vista 37
- Share a folder on Windows XP 31
- Software update 20
- Source 22
- Standby mode 9

T

- Technical specifications 79
- To cancel snooze 13
- To silence the alarm 12
- To stop the alarm 12
- To stop the buzzer 12
- Troubleshooting 66

V

- Volume 3, 5

W

- Warranty 73
- Weather (Info) 62
- Weather forecast 62
- Weather settings 19
- Wireless network 15

VTECH TELECOMMUNICATIONS LTD.
A member of THE VTECH GROUP OF COMPANIES.

Distributed in the U.S.A. by VTech Communications, Inc. Beaverton, Oregon 97008

Distributed in Canada by VTech Technologies Canada, Ltd., Richmond, B.C. V6W 1L5

Copyright ©2009 for VTECH TELECOMMUNICATIONS LTD.

Printed in China.

Version 3

91-002507-020-100

vtech[®]

Designed to fit your home. And your life.[™]