

Congratulations

on purchasing your new VTech product.
Before using this telephone, please read the
Important safety instructions
on page 92 of this manual.

This manual has all the feature operations and troubleshooting necessary to install and operate your new VTech telephone. Please review this manual thoroughly to ensure proper installation and operation of this innovative and feature rich VTech product. For support, shopping, and everything new at VTech, visit our website at www.vtechphones.com. In Canada, go to www.vtechcanada.com.

Table of contents

Before you begin	1	Softkeys	33
Minimum requirements	1	Basic navigation	33
Parts checklist	2	Entering characters	33
Installation	3	Text entry tips	34
Handset charger installation	3	Chart of characters	35
Install handset battery	4	Symbol table	37
Charge handset battery	5	Telephone settings	38
Telephone base installation	7	Ringer	38
Install MSN Messenger/AIM software	8	Play or delete sound clips	38
Install IS6110 phone software	11	Record sound clips	39
Running the IS6110 phone software	19	To record sound clip using microphone:	39
Settings of the IS6110 phone software	20	To record a sound clip using an audio cable:	39
To setup/change the messenger account:	21	Ringer melody	41
Settings for running the IS6110 software:	21	Ringer volume	42
About tab of the IS6110 phone software	22	Display	43
Log into the IS6110 phone software	23	Wallpapers	43
To login on the computer:	23	Color Scheme	44
To login on using the handset:	25	LCD Brightness	45
Running the IS6110 phone software	26	Settings	46
Belt clip & headset (optional)	28	Clock setting	46
Headset	28	To synchronize the telephone clock with	
Belt clip	28	the computer/caller ID:	46
Getting to know the IS6110	29	To set the clock manually:	47
Telephone base layout	29	Key tone	48
Status lights on the telephone base	30	IM alert tone	49
Handset layout	31	Clear voice mail	50
Handset status icons	32	Default setting	51
Using the handset	33	Default setting table	52

Table of contents

Messenger	53	Delete buddy history	65
Buddy status window	53	View buddy information	65
Active chat window.	53	Choose your IM status	65
Online	54	Sign out instant messenger	65
Offline	54	Telephone operation	66
Active status	55	Making calls on the Home line	66
To accept the Internet voice connection (VoIP)		Receiving calls on the Home line	66
request:	55	Ending calls on the Home line	67
Reviewing unread instant messages:	55	Speakerphone operation.	67
Send out instant messages	56	Mute	67
Send a VoIP request.	57	Volume	67
Accept an incoming instant voice request.	58	Find handset	68
VoIP/IM request from buddy outside the current		Redial	68
buddy chat window.	59	Directory	69
Incoming standard call while using IM in		Search and review a directory entry.	69
messenger	60	Edit a directory entry.	70
Incoming standard call while using VoIP in		Delete a directory entry	70
messenger	61	Delete all directory entries	70
Incoming Internet voice call (VoIP) while idle	62	Add a new entry in the directory	71
Incoming Internet voice call (VoIP) while on a		Caller ID operation	72
standard call	62	Caller ID with call waiting	72
Simultaneous incoming standard call and VoIP		Call log	73
call while on a standard call	63	Save call log entry to the directory	74
VoIP call request comes first	63	Make call log entries ready to dial or store	74
Standard call comes first	63	Delete call log entry	75
Multiple incoming Internet voice calls (VoIP) while		Delete all call log entries.	75
on a standard call	64	Handset screen display message	76
View buddy history.	64	Registration and de-registration	78

Registration of handset	78
De-registration of handset	80
Troubleshooting.	81
Operating range.	89
Maintenance.	89
About cordless telephones	90
Warranty	90
Important safety instructions	92
FCC, ACTA and IC regulations.	93
The RBRC® Seal	94
Technical specification s	95

Before you begin

Minimum requirements

Confirm your system meets the following minimum requirements :

- MSN Messenger or AIM account.
- PC with an available USB port.
- PC with an operating system of Windows Vista/XP/2000 (does not support Window 98/ME).
- Broadband Internet access (cable/DSL).

IMPORTANT:

- In order to access instant messaging with the IS6110, you must either have an account with MSN Messenger or AIM service. If you don't already have a MSN Messenger or AIM account, you may sign up for a free MSN Messenger account at <http://www.hotmail.com> or for a free AIM account at <http://www.aim.com>.
- You must either install the MSN Messenger or AIM software before installing the IS6110 phone software.

Before you begin

Parts checklist

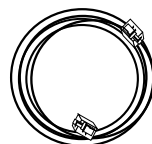
You telephone contains the followings items. Save your sales receipt and original packaging in case you need warranty service.



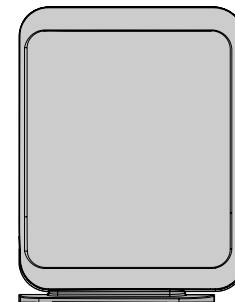
1. Quick start guide



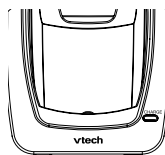
2. Handset



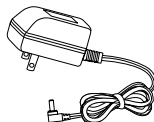
3. USB cable



4. Telephone base



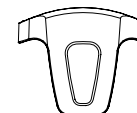
5. Handset charger



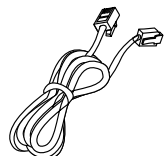
6. Handset charger power adapter



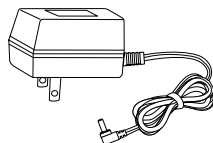
7. Audio cable



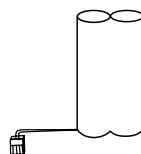
8. Belt clip



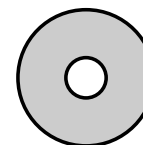
9. Telephone line cord



10. Telephone base power adapter



11. Battery



12. CD-ROM(VTech IS6110 software for MSN Messenger/ AIM software)

note

- To purchase a new battery, visit our website at www.vtechphones.com or call VTech Communications, Inc. at 1 (800) 595-9511 in the United States. In Canada, go to www.vtechcanada.com. or dial 1 (800) 267-7377.

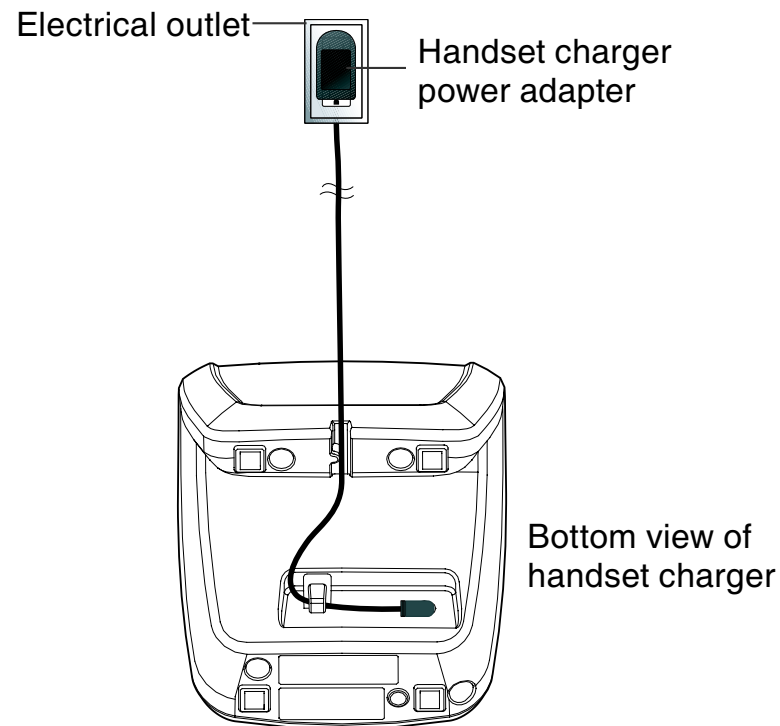
note

- Use only the AC power adapter supplied with this telephone.
- This power adapter is intended to be correctly oriented in a vertical or floor mount position.

Installation

Handset charger installation

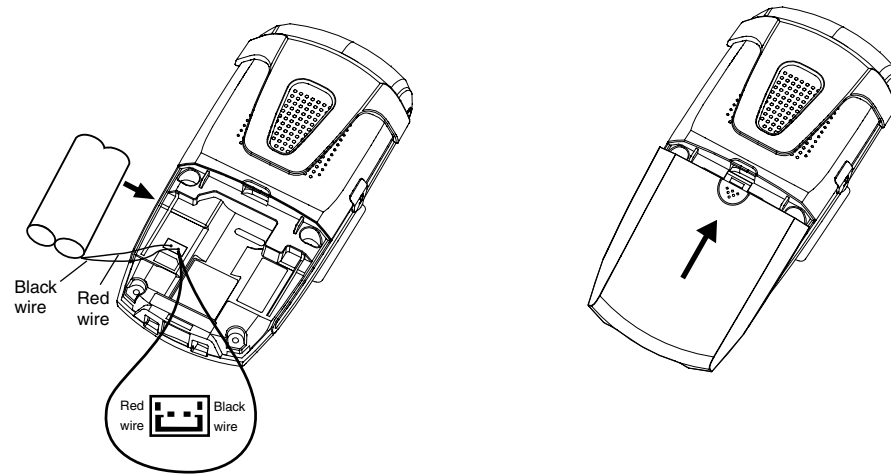
- Plug the smaller power adapter into the power port on the bottom of the handset charger. Route the cord through the slots and plug the other end into the electrical outlet as shown below. Make sure the electrical outlet is not controlled by a wall switch.
- The power adapters for the handset charger and the telephone base are different. The power adapter for the handset charger is the smaller adapter.



Installation

Install handset battery

- Step 1: Align the two holes of the battery plug with the socket pins in the handset battery compartment, matching the red and black wires of the color-coded label.
- Step 2: Place the battery in the compartment with the wires in the bottom left corner.
- Step 3: Position the battery compartment cover and slide it up until it clicks into place.



note

- To purchase replacement batteries, visit us on the web at www.vtechphones.com or call VTech Communications, Inc. at 1 (800) 595-9511. In Canada, go to www.vtechcanada.com or dial 1 (800) 267-7377.

Installation

Charge handset battery

After battery installation, there may be enough power for short calls. For optimal performance, we recommend that you place the handset in the handset charger and allow the battery to charge for 16 hours before use. The **CHARGE** light on the handset charger will be lit to indicate that the handset is charging. You can keep the battery charged by returning the handset to the handset charger after each use. When the battery power is completely depleted, a full recharge takes about 16 hours. If the handset will not be used for a long period, remove the battery to prevent possible leakage.

After the battery is fully charged, you can expect the following performance:

Operation	Operating time
While in use (handset/headset)	7 hours
While in use (speakerphone)	2 hours
While in use (IM mode)	2 hours
While not in use (standby*)	96 hours

*Handset is off the charger but not in use.

The battery needs charging when:

- A new battery is installed in the handset.
- The battery indicator on the handset display is flashing and empty.

Installation

Charge handset battery

CAUTION:

To reduce the risk of fire or injury, read and follow these instructions:

1. Use only the battery(ies) provided or their equivalent.
2. Do not dispose of the battery(ies) in a fire. Check local waste management codes for special disposal instructions.
3. Do not open or mutilate the battery(ies). Released electrolyte is corrosive and may cause burns or injury to the eyes or skin. The electrolyte may be toxic if swallowed.
4. Exercise care in handling battery(ies) in order not to create a short circuit with conductive materials such as rings, bracelets, and keys. The battery and/or conductor may overheat and cause burns.
5. Charge the battery(ies) provided with or identified for use with this product only in accordance with the instructions and limitations specified in this manual.

WARNING: TO PREVENT FIRE OR SHOCK HAZARD, DO NOT EXPOSE THIS PRODUCT TO WATER OR ANY TYPE OF MOISTURE.

note

- The power adapter is intended to be correctly oriented in a vertical or floor mount position.
- Use only the power adapter provided in this package; using any other power adapter not manufactured by VTech could damage the telephone.

Installation



Telephone base installation

To install the telephone base:

Step 1: Install telephone line

Plug one end of the telephone line cord into the telephone line jack on the back of the telephone base. Then plug the other end of the cord into a telephone outlet. If you have DSL, you may need to install a DSL filter between the IS6110 telephone base and the wall jack. Contact your DSL provider for more information on DSL filters and telephone line interference.

Step 2: Install USB cable

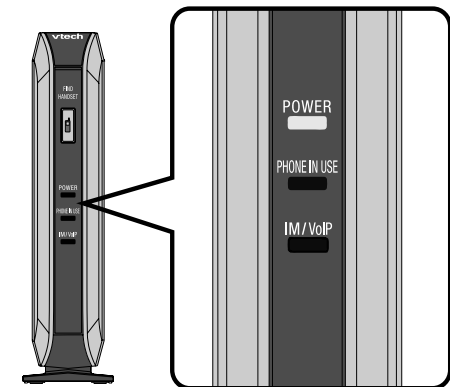
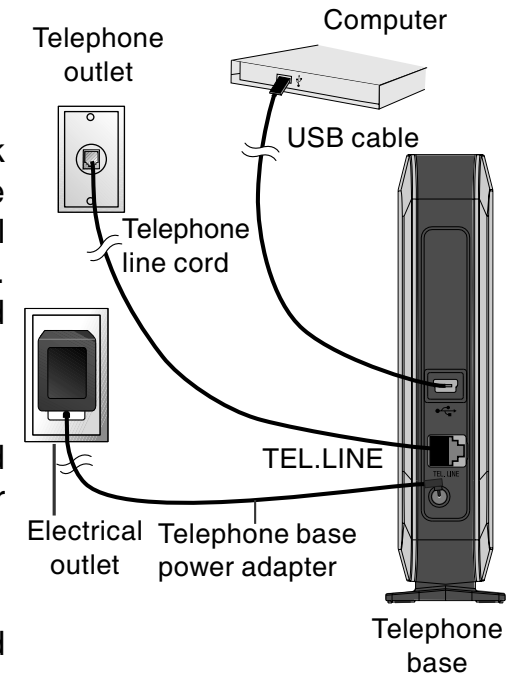
Using the USB cable provided, connect one end into the port labelled , located on the back of the telephone base. Connect the other end into an available USB port  on your computer.

Step 3: Turn power on

Plug the telephone base power adapter into the power port located on the back of the IS6110 telephone base and the other end into an electrical outlet not controlled by a wall switch. This turns the telephone on. Do NOT interrupt the telephone installation process by unplugging the power adapter or by using the handsets until the **POWER** indicator light on the front of telephone base is lit steadily.

Step 4: Check diagnostic lights

The **POWER** light should be on indicating the power is on.



Installation

Install MSN Messenger/AIM software

Before installing IS6110 phone software and using MSN Messenger/AIM on the handset, MSN Messenger/AIM software must be installed in your computer first.

To install the MSN Messenger/AIM software:

Step 1: Insert the enclosed VTech IS6110 software CD-ROM into your computer. The CD-ROM will run automatically and the following screen will be shown.



note

- Press the **EXIT** button to exit the installation.

note

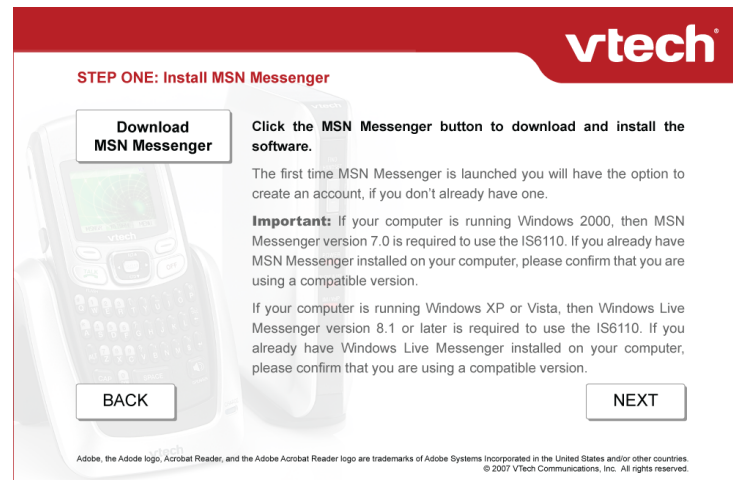
- Click the **BACK** button anytime to return to the previous screen.

Installation

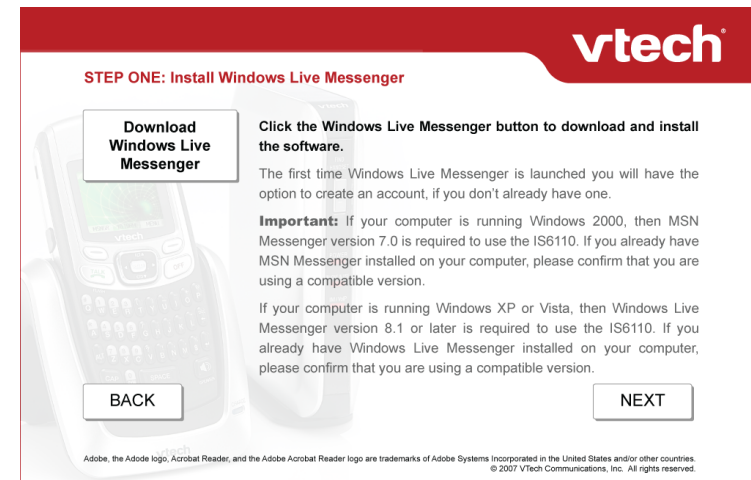
Install MSN Messenger/AIM software

- Step 2:
- If you want to install MSN Messenger, click **MSN Messenger** button. The software will check your computer to see what operating system you are using. If you are using Windows 2000, the screen 2a below will be displayed. If you are using Windows XP or Vista, the screen 2b below will be displayed.
 - If you want to install AIM, click **AOL Instant Messenger** button and go to **Step 3**.

2a - MSN Messenger for Windows 2000



2b - Windows Live Messenger for Windows XP/Vista

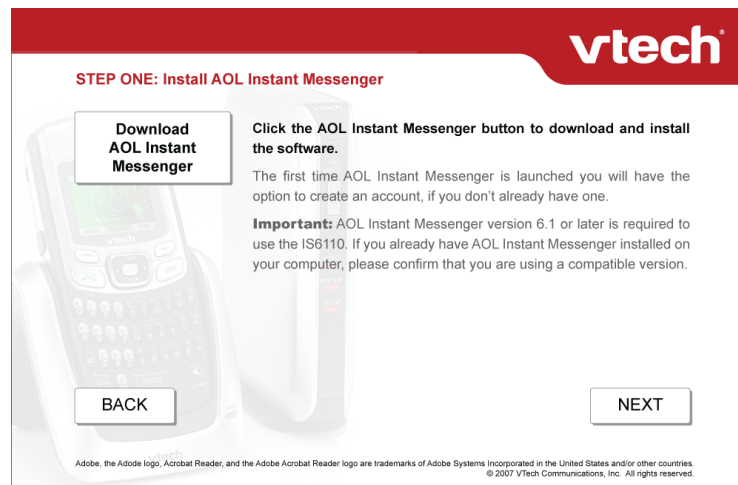


- Click the **Download MSN Messenger** button or **Download Windows Live Messenger** button to start the installation on the screen 2a or 2b respectively. Follow the instructions for downloading. After the installation is complete, click the **NEXT** button. Go to **Step 4** for the installation of the IS6110 phone software.

Installation

Install MSN Messenger/AIM software

- Step 3:
- The following screen will be displayed after you click the **AOL Instant Messenger** button to install the AIM software.



- Click the **Download AOL Instant Messenger** button to start the installation. Follow the instructions for downloading. After the installation is complete, click the **NEXT** button. Go to **Step 4** for installation of the IS6110 phone software.

Installation

Install IS6110 phone software

- Step 4:
- After the installation of MSN Messenger or AIM software is complete, you will be prompted to install the IS6110 phone software. The following screen will be displayed. Click the **Install IS6110 Phone Software** button to start the installation.

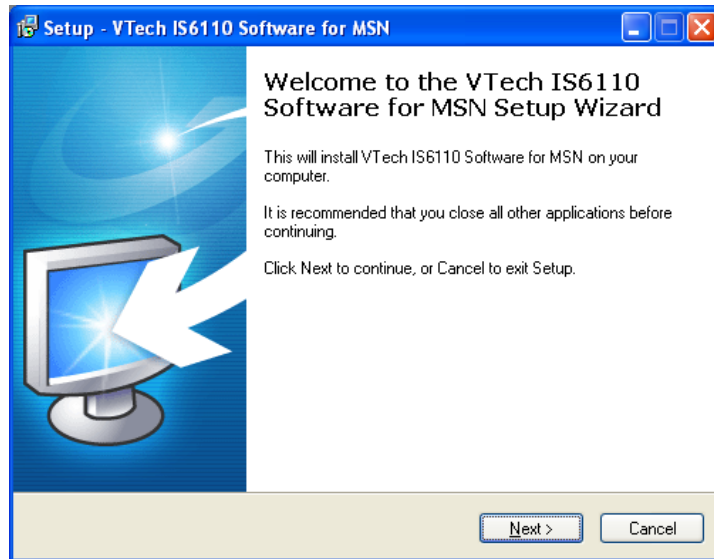


Installation

Install IS6110 phone software

Step 5: A VTech IS6110 setup window will be displayed. If you are installing MSN Messenger, the screen 2a below will be displayed. If you are installing AIM, the screen 2b below will be displayed. Click the **Next** button to proceed.

2a :



2b:



note

- Click the **Cancel** button to cancel installation.

note

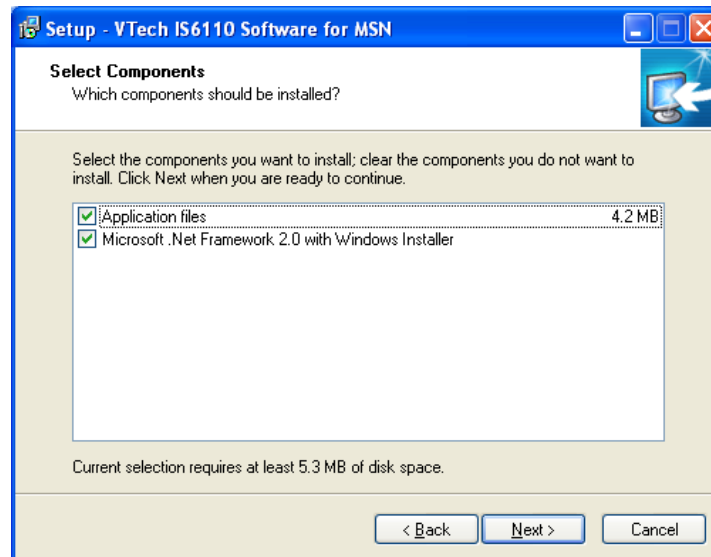
- Click the **Cancel** button to cancel installation. Click the **Back** button to go back to the previous step.

Installation

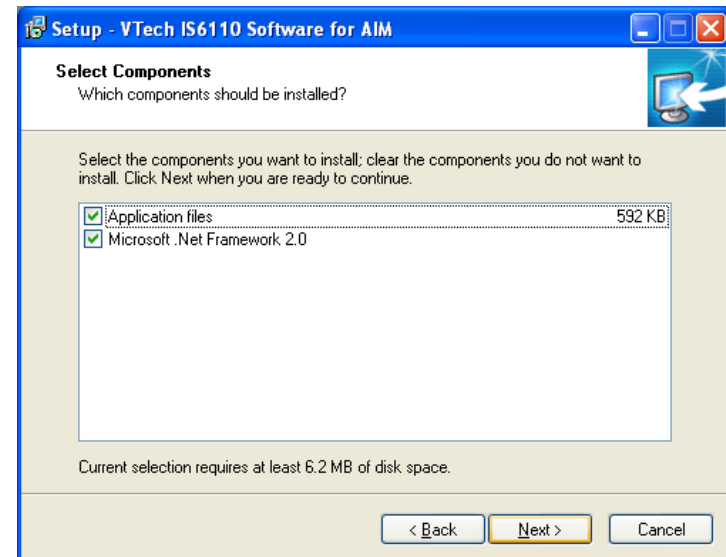
Install IS6110 phone software

Step 6: Make sure the boxes beside **Application files** and **Microsoft .Net Framework 2.0** are checked. If you are installing MSN Messenger, the screen 2a below will be displayed. If you are installing AIM, the screen 2b below will be displayed. Click the **Next** button to proceed.

2a:



2b:

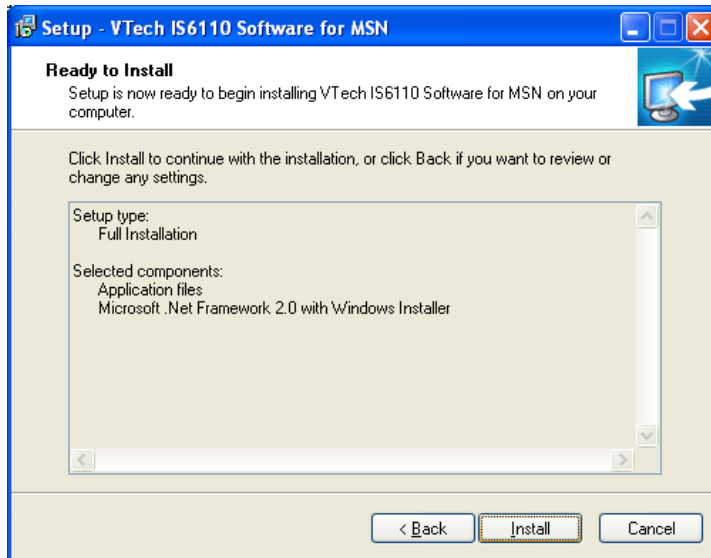


Installation

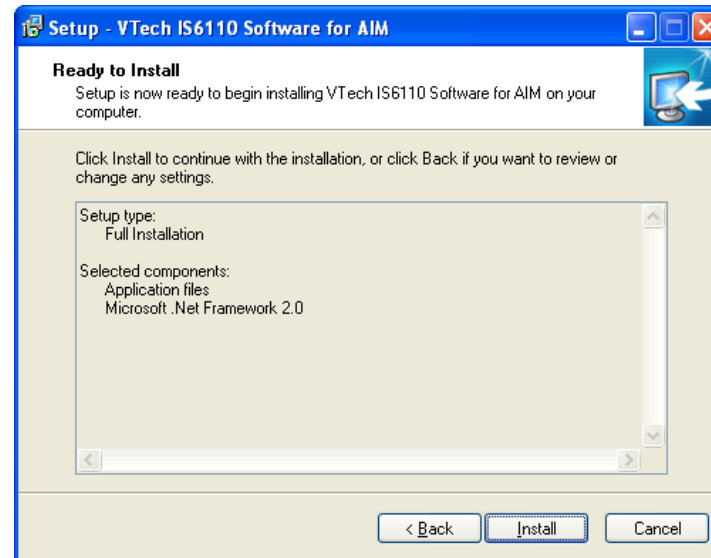
Install IS6110 phone software

Step 7: If you are installing MSN Messenger, the screen 2a below will be displayed. If you are installing AIM, the screen 2b below will be displayed. Click the **Install** button to proceed.

2a:



2b:



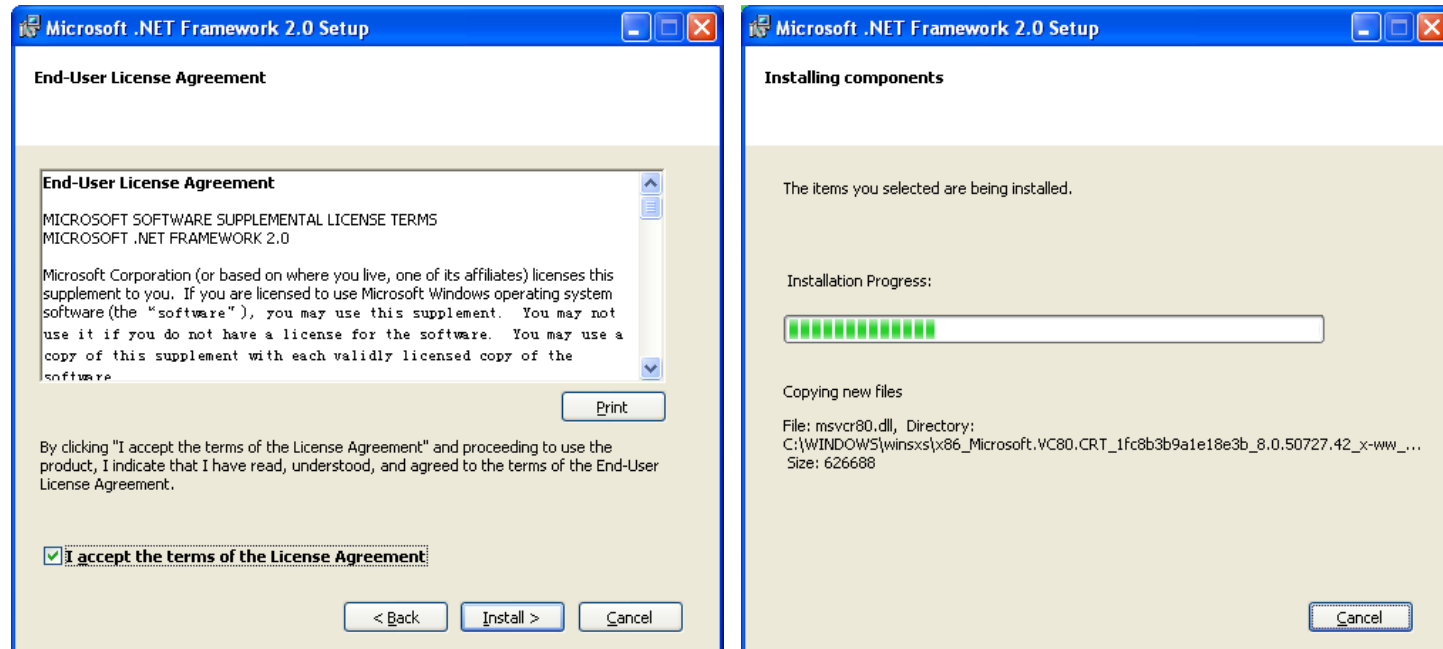
note

- Click the **Cancel** button to cancel installation. Click the **Back** button to go back to the previous step.

Installation

Install IS6110 phone software

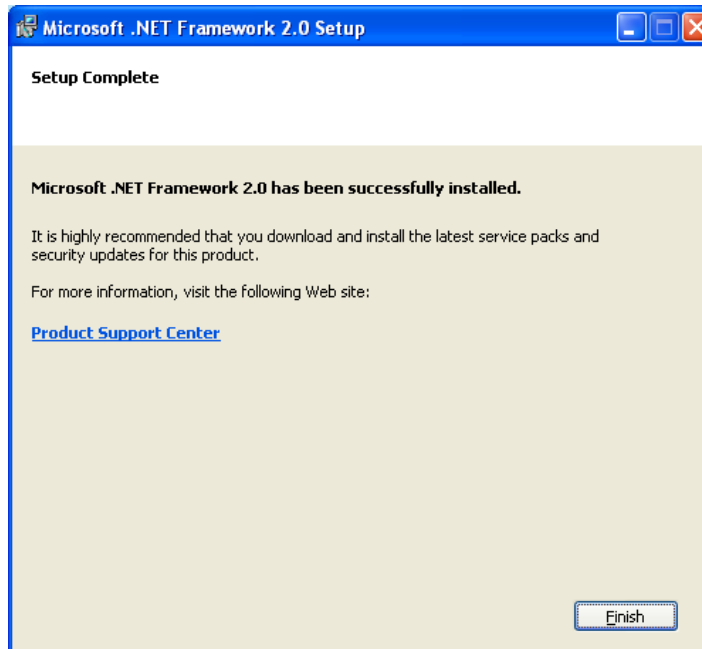
Step 8: The **Microsoft .NET Framework 2.0 Setup** window will be display. Make sure the box beside **I accept the terms of the License Agreement** is checked. Click the **Install** button and the installation will begin.



Installation

Install IS6110 phone software

Step 9: After the installation of Microsoft .NET Framework 2.0 is complete, the following window will be displayed. Click the **Finish** button and it will return to the installation of VTech IS6110 software.



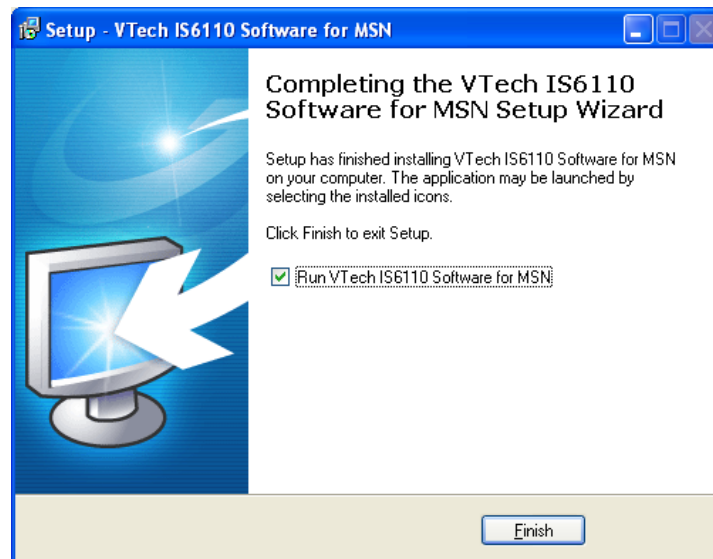
Installation

Install IS6110 phone software

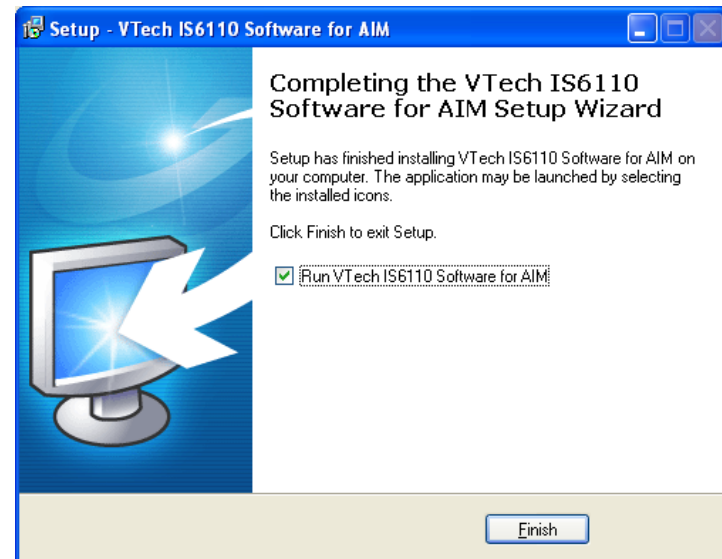
Step 10: After the installation of IS6110 phone software is complete, the below screen will be displayed. If you are installing MSN Messenger, the screen 2a below will be displayed. If you are installing AIM, the screen 2b below will be displayed.


If you want to start the IS6110 phone software immediately, make sure the box beside **Run VTech IS6110 for MSN** (2a) or **AIM** (2b) is checked and click the **Finish** button. If you prefer to start the IS6110 phone software later, un-check the box by clicking inside it and click **Finish** button.

2a:



2b:

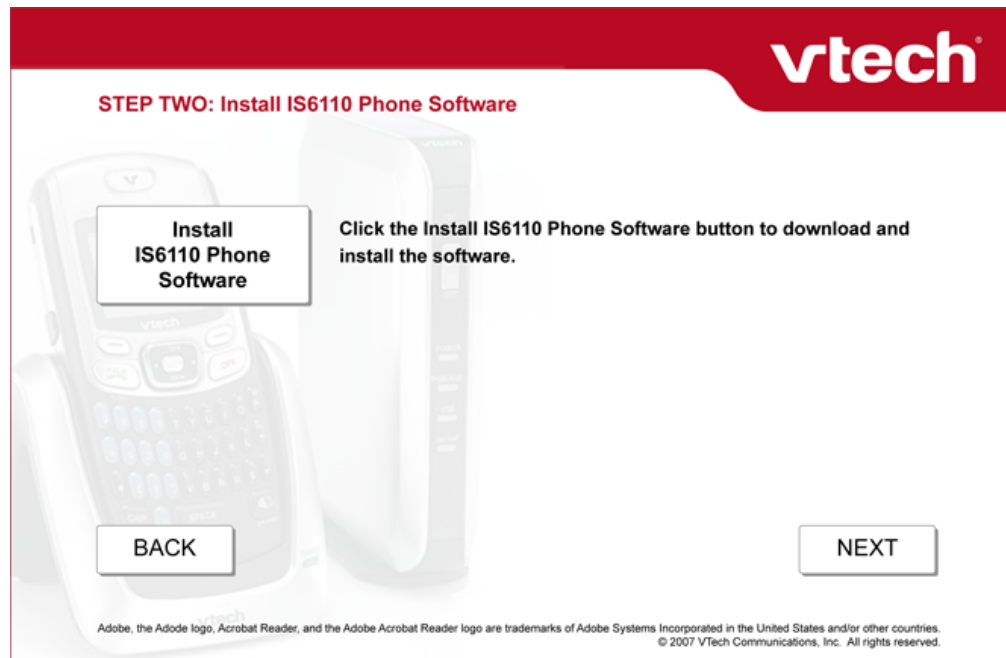


After the installation is complete, you will find a IS6110 phone software shortcut icon  on your PC desktop. You can start the IS6110 phone software anytime by clicking on the icon and the software will be started automatically.

Installation

Install IS6110 phone software

Step 11: After the installation of the IS6110 phone software, the following screen is still displayed. Click the **Next** button to proceed and click the **EXIT** button to exit the installation.




note

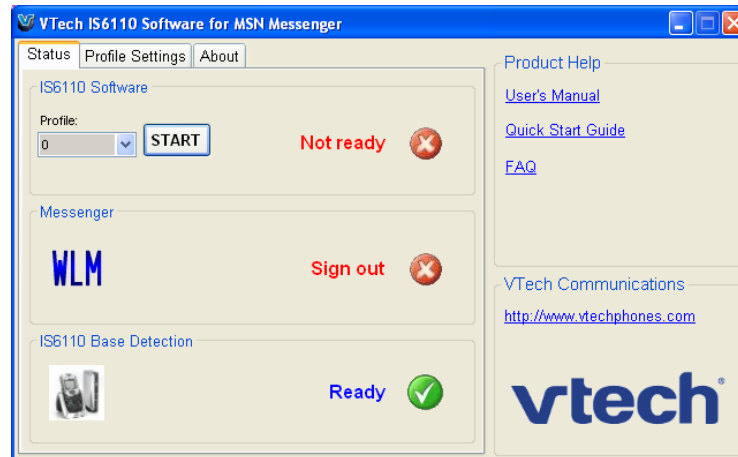
- After the IS6110 phone software has been started at the computer, the **USB** light on the front of the telephone base will be on if there is a good connection between the telephone base and the computer.

Installation

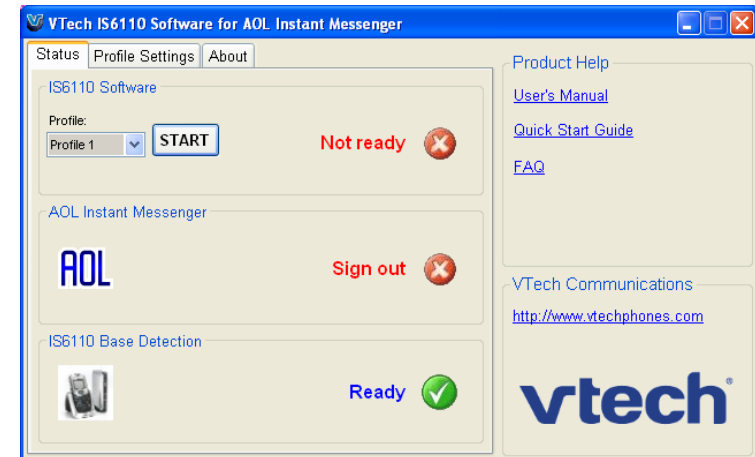
Running the IS6110 phone software

The IS6110 phone software must be started before using the messenger service on your handset. Click on the IS6110 phone software application icon  on your PC desktop, the software will run automatically and the following screen will be displayed. If you are using MSN Messenger, the screen 2a below will be displayed. If you are using AIM, the screen 2b below will be displayed. There are three tabs including **Status**, **Profile Settings** and **About**.

2a:



2b:



Installation

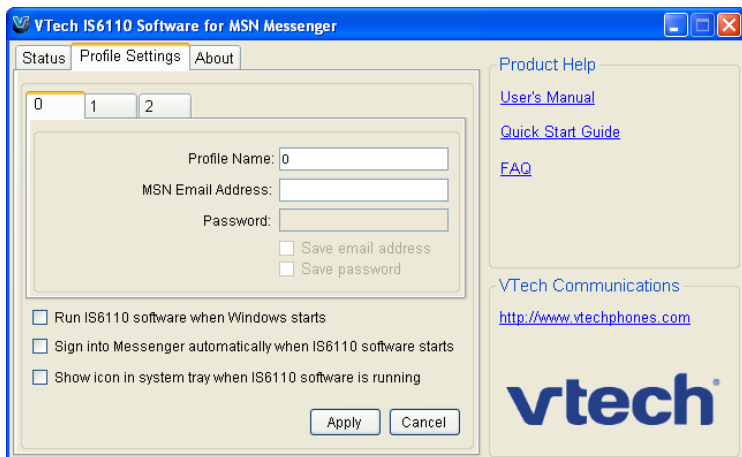
Settings of the IS6110 phone software

Changes to the **Profile Settings** tab can only be made when the IS6110 software is not running (i.e. On the **Status** tab the first box must say **STOP**).

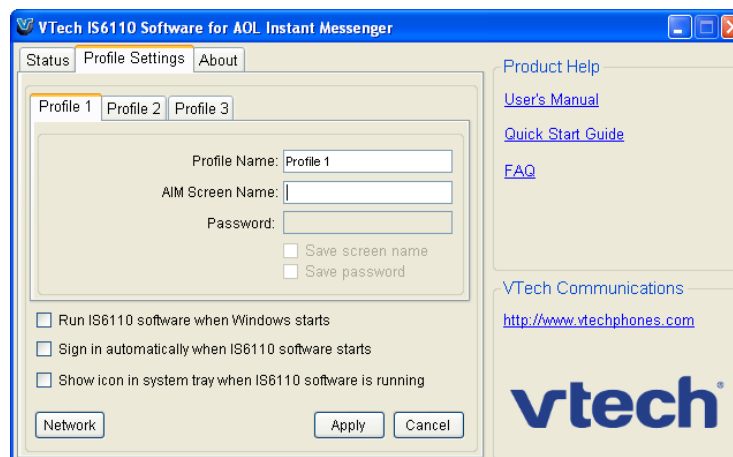
In order to use the instant messaging and internet voice features with your phone, you must first create a profile by entering your MSN or AIM email address and password on the **Profile Settings** tab.

You can create up to 3 profiles for different IM accounts. If you are using MSN Messenger, the screen 2a below will be displayed. If you are using AIM, the screen 2b below will be displayed.

2a:



2b:



note

- The messenger profile name and password cannot be changed in the handset.

Installation

Settings of the IS6110 phone software

To setup/change the messenger account:

- Step 1: Choose a specific profile by clicking on the tab.
- Step 2: Enter your email address for your messenger account in the box next to **MSN Email Address (2a)** or **AIM Screen Name (2b)**.
- Step 3: Enter your password in the box next to **Password**.
- Step 4: If you do not want to re-enter you email address and password every time you start the IS6110 phone software, make sure the boxes next to **Save email address (2a)** / **Save screen name (2b)** and **Save password** are checked.
- Step 5: Click the **Apply** button to save, or click the **Cancel** button to cancel the change.

Settings for running the IS6110 software:

- Step 1: Choose a specific profile by clicking on the tab.
- Step 2: In the box next to **Profile Name**, type the name for the profile and click the **Apply** button to save, or click the **Cancel** button to cancel the change.

If you want to log into your messenger account automatically every time the IS6110 software starts, make sure the box next to **Log into messenger automatically when IS6110 software starts** is checked.

If you want to run the IS6110 phone software automatically every time Windows starts, make sure the field **Run IS6110 software when Windows starts** is checked.

If you want to show an icon the system tray for easy access and the status of the IS6110 software, make sure the box next to **Show icon in system tray when IS6110 software is running** is checked.

While your **AIM Screen Name** and **Password (2b)** are correct but you have problem to login to your AIM account, configure your internet settings by clicking on the **Network** button (2b).

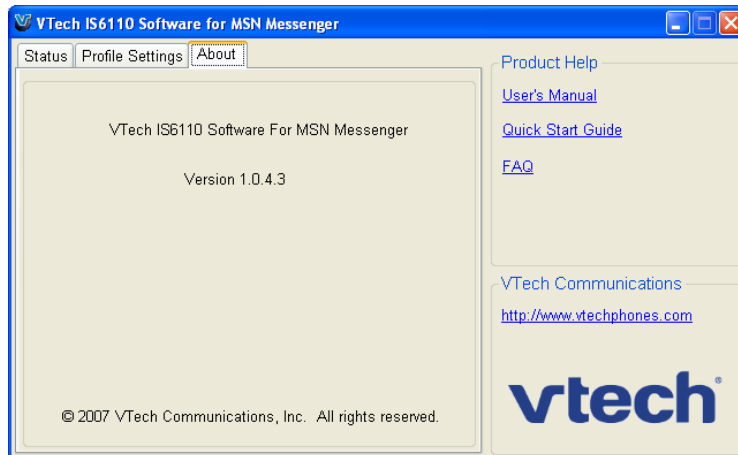
After all the changes are made, click the **Apply** button to save the new settings.

Installation

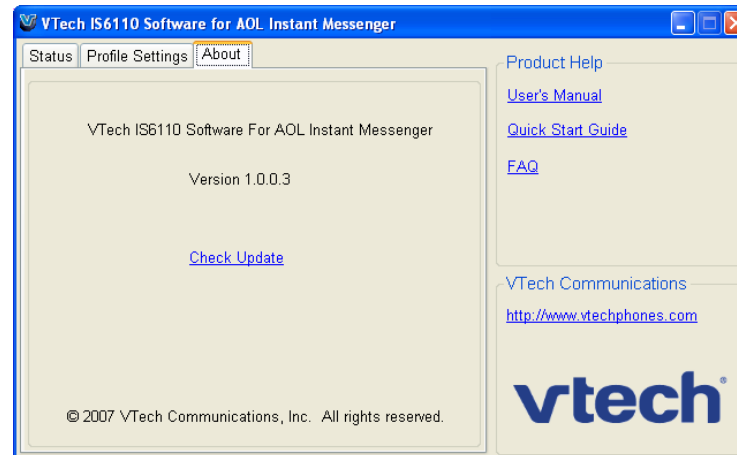
About tab of the IS6110 phone software

On the **About** tab of the IS6110 phone software, the version of the software will be displayed. In the **Product Help** section, you can find the link to the User's Manual, Quick Start Guide and FAQ. You can also find the VTech website address in the **VTech Communications** section. If you are using MSN Messenger, the screen 2a below will be displayed. If you are using AIM, the screen 2b below will be displayed.

2a:



2b:



Installation

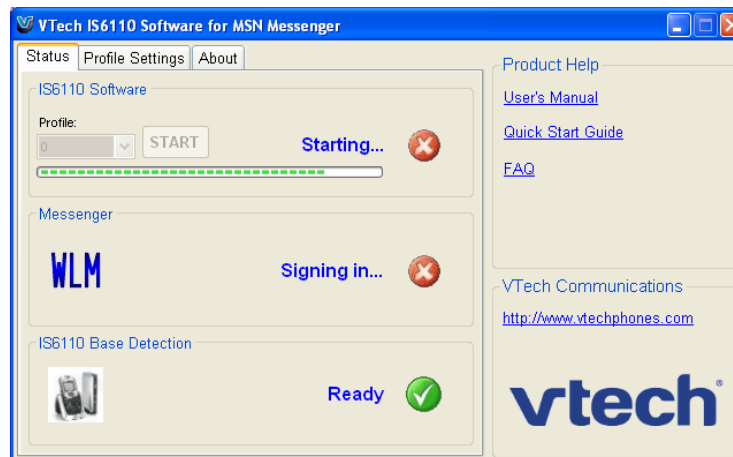
Log into the IS6110 phone software

You can log into the IS6110 phone software from your handset or computer.

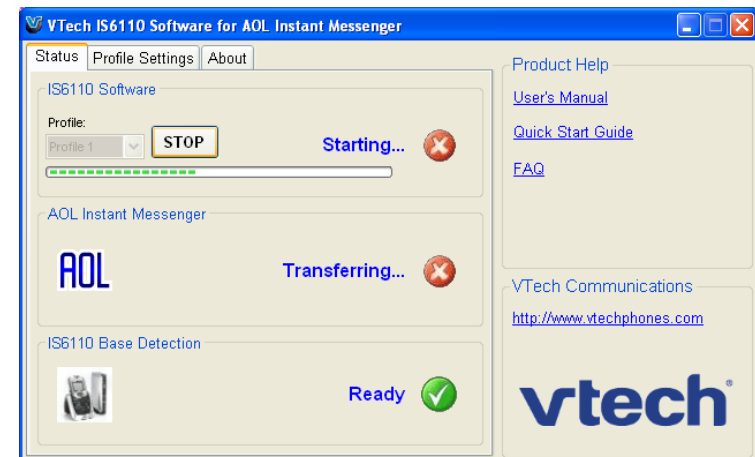
To login on the computer:

Step 1: On the **Status** tab of the IS6110 phone software, choose the profile you wish to log into by clicking on the arrow of the Profile field. This will open a drop down box. Click on the profile you wish to use and click the **START** button. If you are using MSN Messenger, the screen 2a below will be displayed. If you are using AIM, the screen 2b below will be displayed.

2a:



2b:



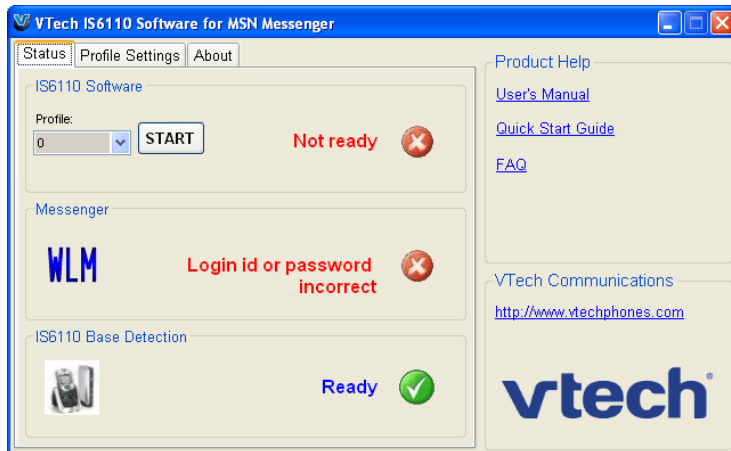
Installation

Log into the IS6110 phone software

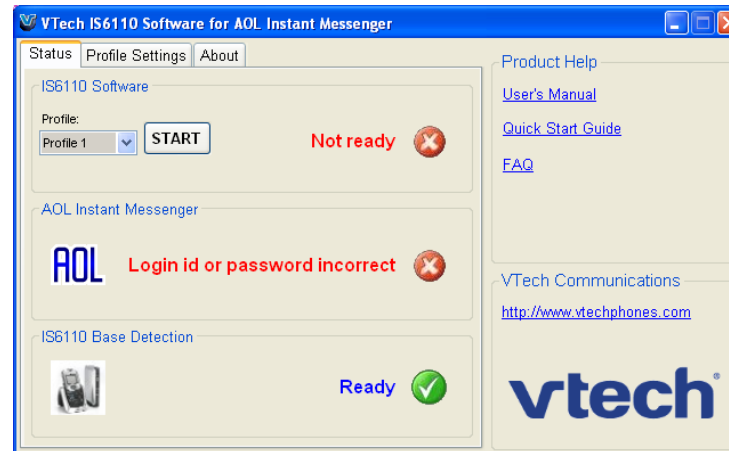
To login on the computer:

- Step 2:
- If login is not successful because the login id and/or password is incorrect, the following screen will be displayed. If you are using MSN Messenger, the screen 2a below will be displayed. If you are using AIM, the screen 2b below will be displayed.

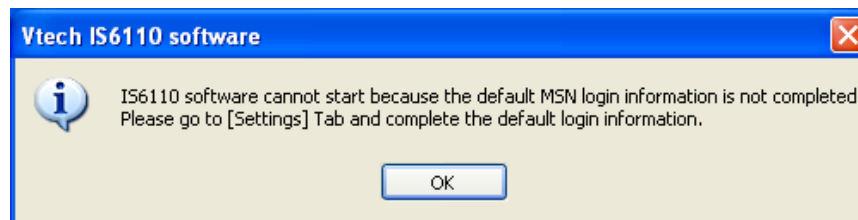
2a:



2b:



- If either the login name or password is missing, the following error box will be displayed. Check with the **Profile Settings** tab for the missing item.



note

- The **IM/VoIP** light on the telephone base will be on when there is a good connection to the computer and you are logged into messenger.

Installation

Log into the IS6110 phone software

If you try to log in to the messenger through the handset before the IS6110 phone software is started, the screen of the handset will display **Fail to connect messenger**.

To login on using the handset:

When logging in from the handset you will automatically be logged into the profile that is chosen in the IS6110 phone software on the computer. If you wish to change the profile you must change it on the computer.

Step 1: Press the **MSNGR** softkey from the idle screen.

-OR-

Press the **MENU** softkey. Press the , ,  and/or  NavKeys to choose **Messenger**, then press the **SELECT** softkey or the center NavKey/**SELECT**/.

Step 2: The screen will display **Login in progress. Please wait.**

Step 3: If login is successful, the buddy status window will be displayed.

Step 4: If login is not successful, an error message will be displayed on the screen. Check with the **Profile Settings** tab of the IS6110 phone software for the incorrect or missing item(s).

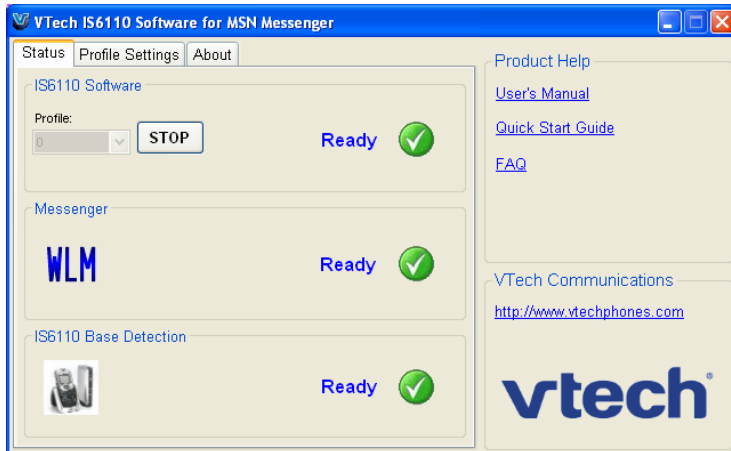
Error messages	Explanation
Sign in error	It indicates the login name is incorrect.
Password error	It indicates the login password is wrong.
Missing password or sign in name	If there is a missing name or password.

Installation

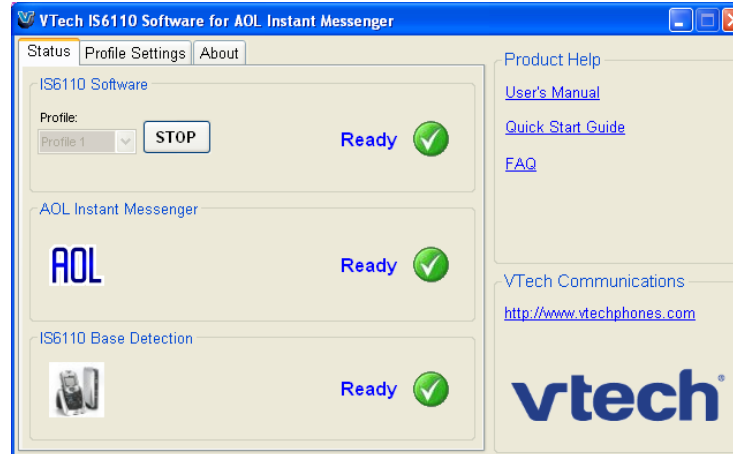
Running the IS6110 phone software

In order to use the MSN Messenger on the handset, all the status must be **Ready** as shown in the screen below. If you are using MSN Messenger, the screen 2a below will be displayed. If you are using AIM, the screen 2b below will be displayed.

2a:




2b:



Installation

Running the IS6110 phone software

If login is successful, the IS6110 phone software interface will be hidden in the system tray. Double click on the  icon in the system tray to view the VTech IS6110 software. If you had already started the messenger on your computer before logging in through the IS6110 phone software, the following message will be displayed. If you are using MSN Messenger, the screen 2a below will be displayed. If you are using AIM, the screen 2b below will be displayed.

2a:



2b:



Installation

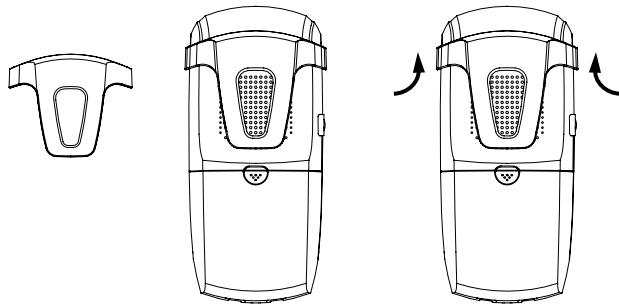
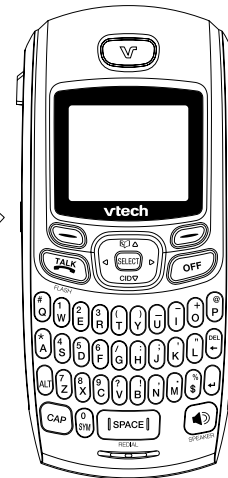
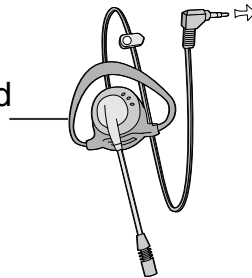
Belt clip & headset (optional)

For hands-free telephone conversations, use any industry-standard 2.5mm headset (purchased separately). For best results, use a VTech 2.5mm headset.

Headset

Plug the 2.5 mm headset into the jack on the side of the handset (beneath the small rubber flap).

Industry standard
2.5mm headset



Belt clip

Align and snap the belt clip into the notches on each side of the handset. To remove, go to either side of the handset and gently pry the clip from the notch.

note

- To purchase a headset, visit us on the web at www.vtechphones.com or call VTech Communications, Inc. at 1 (800) 595-9511. In Canada, go to www.vtechcanada.com or dial 1 (800) 267-7377.
- Whenever a compatible headset is connected to the cordless handset, the microphone on the handset will be muted. This reduces background noise and improves the sound quality.

Getting to know the IS6110

Telephone base layout

1. FIND HANDSET

If you misplace the handset, press this button to make the handset ring. To stop the ringing, press **OFF** on the handset, or press **FIND HANDSET** on the telephone base again.

2. POWER

A steady red light indicates the telephone base is powered on.

3. PHONE IN USE

A blinking red light indicates that there is an incoming call. A steady red light indicates that the telephone line is in use. If the light is off, the telephone line is not in use.

4. IM/VoIP

A steady red light indicates that the messenger has been logged in and it is ready to start IM or VoIP. If the light is off, the IS6110 software has not been started at the PC.

5. (USB port)

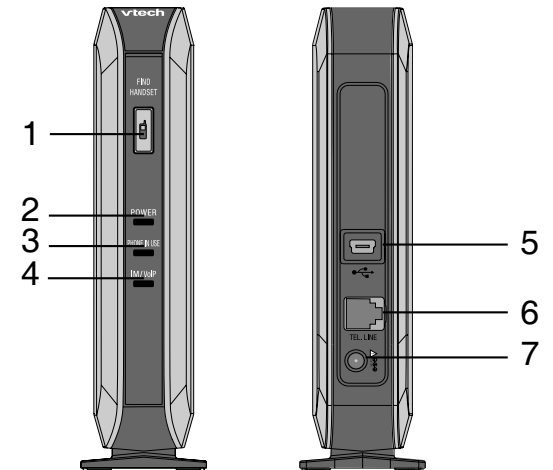
Connects to the USB port at the computer to establish a connection between the telephone base and the computer.

6. TEL LINE JACK

Connects to your home telephone line for making and receiving calls.

7. POWER PORT

Connects to the power adapter which plugs into an electrical outlet to provide power to the telephone base.



Getting to know the IS6110

Status lights on the telephone base

Name	Color	Indication light status	Description
POWER	Red	On	The telephone base is powered on.
PHONE IN USE	Red	Off	The telephone line is not in use.
		Blinking	The telephone is ringing.
		On	The telephone line is in use.
IM/VoIP	Red	Off	The IS6110 phone software has not been started at the computer.
		On steady	The IS6110 phone software has been started at the computer and it is ready to start IM/IV.

Getting to know the IS6110

Handset layout

1. Earpiece

Audio output for telephone calls.

2. Softkey

Press to select the action shown on the bottom of the screen.

3. TALK/FLASH

Press to get a dial tone.
After pre-dialing a number, press to make a call.
Press to answer call waiting.

4. Numeric keys

These keys are shown in grey on the keypads. While in numeric mode, they are used for dialing phone numbers, or entering numbers.

5. ALT (alt)

Press to change to numeric mode.
While in text mode, press and then any key on the keypad to perform the alt function of the selected key.

6. CAP

Press this key to switch between uppercase and lowercase mode.

7. Microphone

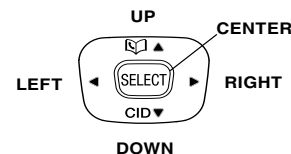
Audio input for telephone calls.

8. VOL ▲ / ▼

Press this key to adjust the listening volume while on a call.

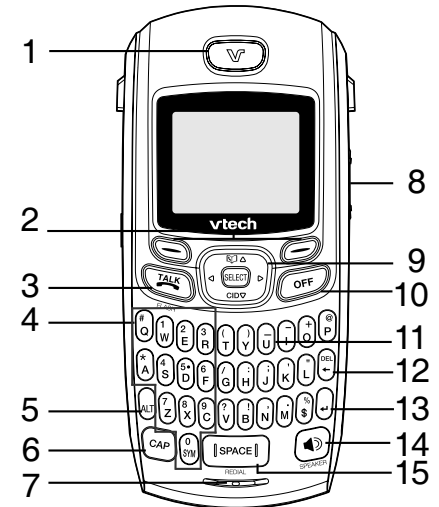
9. NavKey (navigation key)

Use this key for navigating menu screens and for positioning the cursor when editing text.
Press the up NavKey to access the directory.
Press the down Navkey to access the call log.
Press the center NavKey/**SELECT** to select the highlighted item.



10. OFF

Press to end a call.



11. Keypads

These keys are used for dialing phone numbers, or entering text.

12. DEL ← (delete)

Press to delete the character.

13. ↵ (enter)

Press to send out message.

14. 📢 (speaker)

Press to turn the speakerphone on or off.

15. SPACE/REDIAL

Press to insert a space while in text mode. Press to review the redial list.

Getting to know the IS6110

Handset status icons

1. Battery

An animated battery icon is displayed when the battery is charging.

2. VMWI

There are new voicemail messages.

3. Ringer off

Ringer volume is set to off. The handset will not ring when there is an incoming call.

4. On line

Handset is in use.

5. IM indicator

There is unread instant message(s) from a user on the buddy list.

6. VoIP indicator

There is a VoIP request from a user on the buddy list.

7. USB connection status

The telephone base is connected to the computer, but the IS6110 phone software has not started at the computer.



7. USB connection status

The telephone base is not connected to the computer.

7. MSN Messenger / Window Live Messenger connection status

The messenger has been logged in.

7. AIM connection status

The AIM has been logged in.

7. Arrows

There is a function when pressing the corresponding NavKey(s).

8. Headset mode

Headset is in use.

8. Speakerphone mode

Speakerphone is in use.

9. Microphone muted

The microphone is disabled during a call.

10. CAP

Uppercase input mode is used to input the next character.

10. CAP (locked)

Uppercase input mode is used to input all subsequent character(s).

10. Alt

Numeric input mode is used to input the next character.

10. Alt (locked)

Numeric input mode is used to input all subsequent character(s).

10. SYMBOL

Symbol will be input in the next character.


Getting to know the IS6110

Using the handset


Softkeys

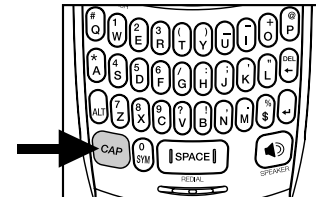
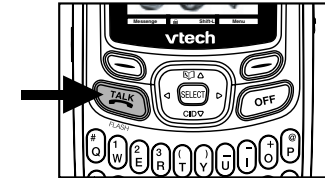
The handset has two softkeys serving multiple functions. The text shown above the softkey indicates the current function of the key. If no text is shown, then the key has no function at this time.

Basic navigation

- Use the NavKey (navigation key) to move around the menu screens.
- Press the center NavKey/**SELECT**/ to select a given option.
- Return to the idle screen at anytime by pressing **OFF**.

Entering characters

- Use the dialpad to enter characters while in the text entry field. Lowercase input mode will be used by default (see **Chart of characters** on page 35) and no status icon will be shown in the center of the softkey bar.
- To change to uppercase input mode, press **CAP** and **CAP** will be shown in the center of the softkey bar, indicating the next character will be capitalized or press the **CAP** and the character at the same time (see **Chart of characters** on page 35). It will then return to the previous input mode. Double click **CAP** until **CAP**  is shown in the center of the softkey bar to input subsequent characters in uppercase. Double click it again to return to lowercase mode (release once there is no status icon shown in the sub-display bar).







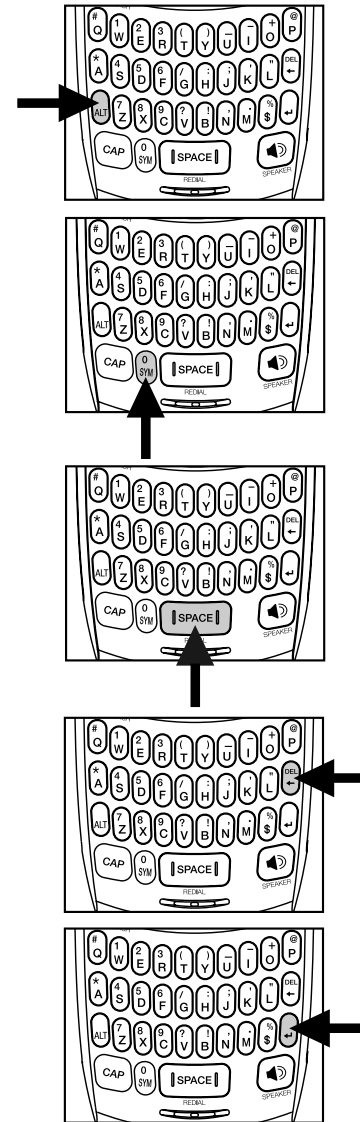
Getting to know the IS6110

Entering characters

- To change to numeric input mode, press **ALT** and **ALT** will be shown in the center of the softkey bar indicating the next character will be a numeric character, or press **ALT** and the character at the same time (See **Chart of characters** on page 35). It will only type the next character in this mode, after that it will return to the previous input mode. Double click **ALT** until **ALT** is shown in the center of the softkey bar to input all the subsequent characters in numeral(s). Double click it again to return to lowercase.

Text entry tips

- Pressing **SYM** while in text entry mode will generate a chart of symbols. Use the navigation key to scroll through the options and press the **SELECT** softkey to insert the highlighted symbol (see **Chart of characters** on page 35) or press **SYM** again to exit.
- Press **SPACE/REDIAL** to enter a space.
- Press the left or right NavKey  or  to move the cursor to the desired character and press **DEL**  to delete the text.
- Press  to send out the instant message.



Getting to know the IS6110

Chart of characters

Use the dial pad and the chart below to enter a name (up to 16 characters). Each press of a particular key causes characters to be displayed in the following order:

Lowercase:

Left softkey			LEFT	UP		RIGHT	Right softkey		
TALK/FLASH				SELECT			OFF		
DOWN									
q	w	e	r	t	y	u	i	o	p
a	s	d	f	g	h	j	k	l	DEL
ALT	z	x	c	v	b	n	m	\$	ENTER
CAP		SYM	SPACE				SPEAKER		

Uppercase:

Left softkey			LEFT	UP		RIGHT	Right softkey		
TALK/FLASH				SELECT			OFF		
DOWN									
Q	W	E	R	T	Y	U	I	O	P
A	S	D	F	G	H	J	K	L	DEL
ALT	Z	X	C	V	B	N	M	\$	ENTER
CAP		SYM	SPACE				SPEAKER		

Getting to know the IS6110

Chart of characters

Numeric mode:

Left softkey			LEFT	UP		RIGHT	Right softkey		
TALK/FLASH				SELECT			OFF		
DOWN									
#	1	2	3	()	_	-	+	@
*	4	5	6	/	:	;	'	"	DEL
ALT	7	8	9	?	!	,	.	%	ENTER
CAP		SYM	SPACE			SPEAKER			

Symbol mode:

Left softkey			LEFT	UP		RIGHT	Right softkey		
TALK/FLASH				SELECT			OFF		
DOWN									
		~	`	^	&	¥	¡		
		\	[]	{	}	£	α	DEL
ALT		¢	«	»	<	=	>	€	ENTER
CAP		SYM	SPACE			SPEAKER			

Getting to know the IS6110

Symbol table

Pressing **SYM** while in text entry mode will generate a chart of different symbols as shown in the following table.

~	`	^	&	¥	!	
\	[]	{	}	£	α
¢	«	»	<	=	>	€











Telephone settings

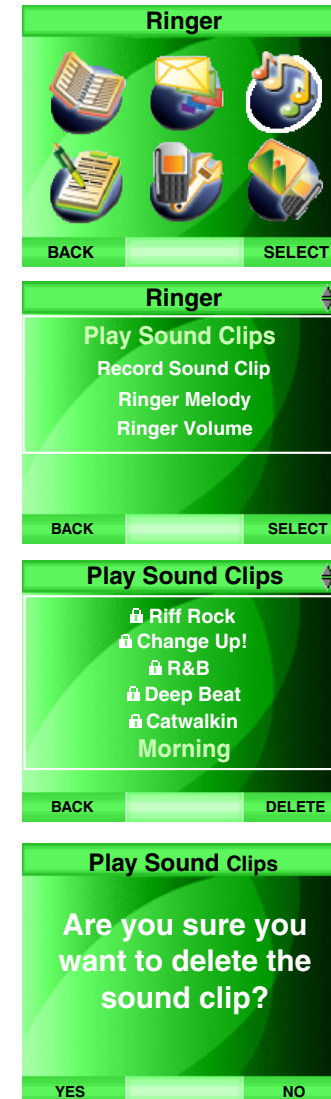
Ringer

From this menu you can change the ringer melody and ringer volume. You can also record and play your own sound clips.

Play or delete sound clips

In this menu, you can play the sound clip(s) on the list including the sound clips recorded using the microphone or audio cable.

- Step 1: Press the **MENU** softkey from the idle screen.
- Step 2: Press the , ,  and/or  NavKeys to choose **Ringer**, then press the **SELECT** softkey or the center NavKey/**SELECT**/.
- Step 3: Press the up or down NavKey  or  to choose **Play Sound Clips**, then press the **SELECT** softkey or the center NavKey/**SELECT**/.
- A list of sound clip(s) will be shown on the screen.
- Step 4: The selected sound clip will be played. The volume can be adjusted by pressing the **VOL ▲ / ▼** on the side of the telephone when the sound clip is played.
- Step 5: Press the up or down NavKey  or  to scroll through the list of sound clip(s).
- Step 6: To delete a sound clip, press the **DELETE** softkey while the desired sound clip is highlighted. The screen will display **Are you sure you want to delete the sound clip?**. Press the **Yes** softkey to confirm, or the **No** softkey to return to previous screen.



note

- If the sound clip has a lock symbol beside it, this sound clip is protected and cannot be deleted.