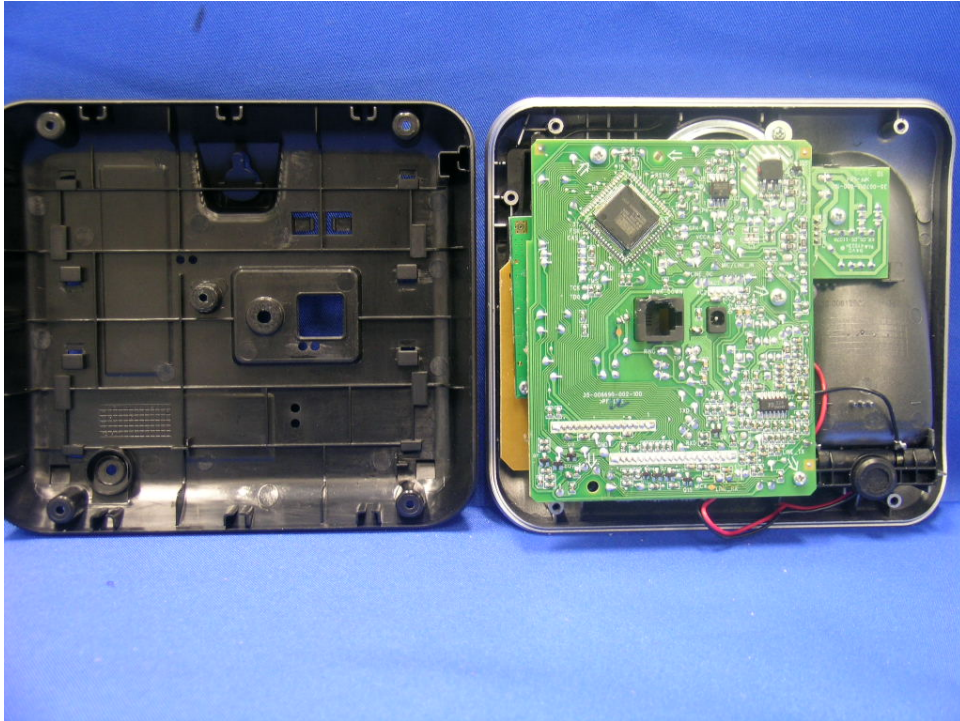


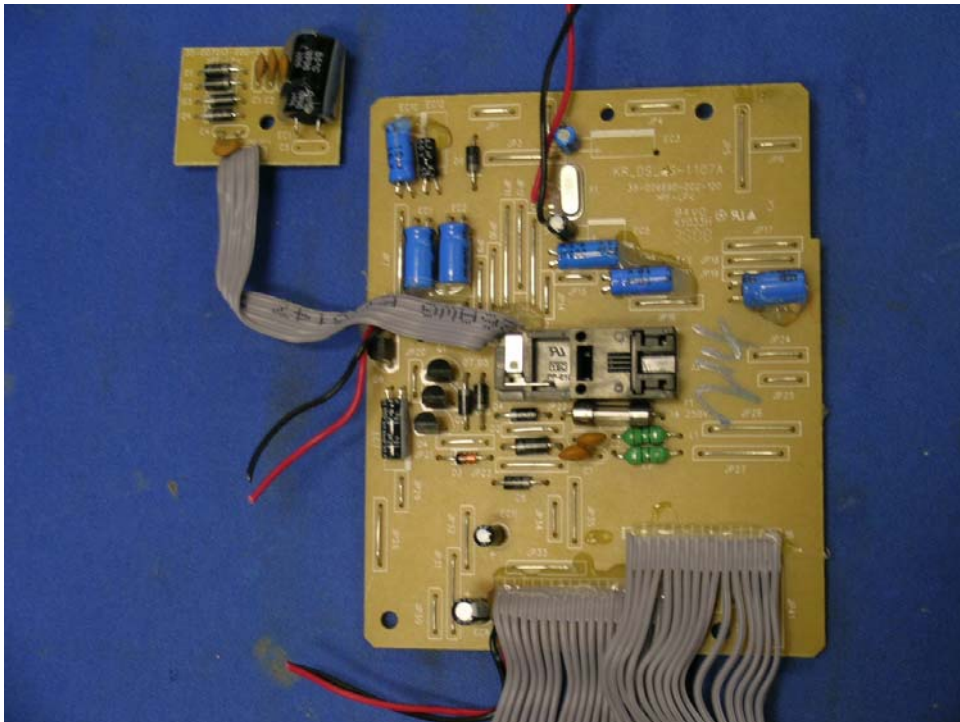
INTERTEK TESTING SERVICES

Internal photos – Model: CS5121

Base Unit assembly



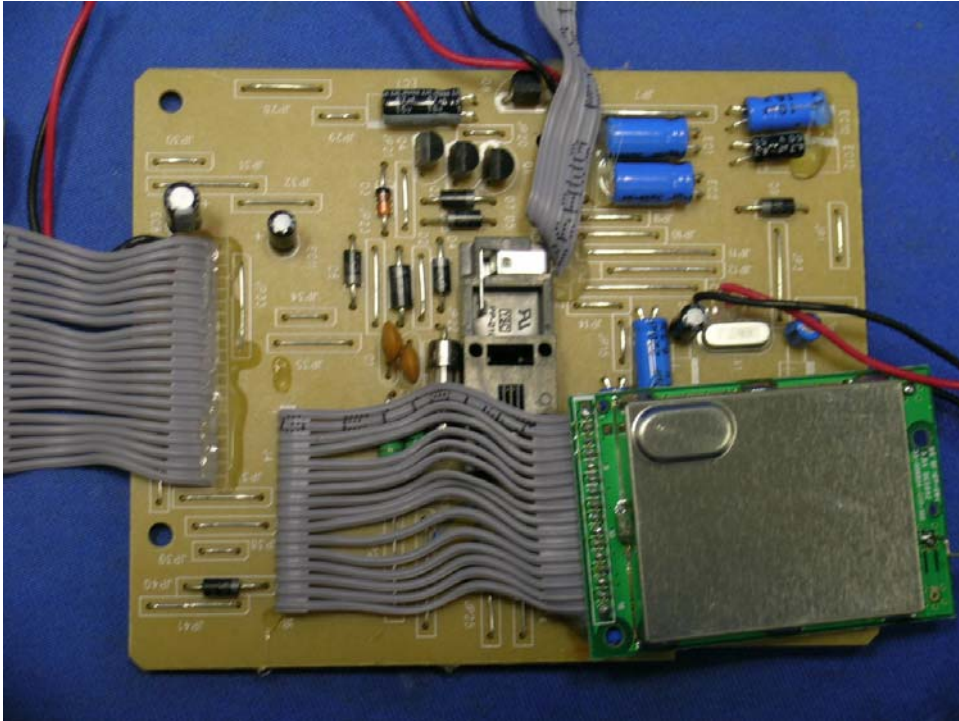
Base Unit Main PCB comp side (View 1)



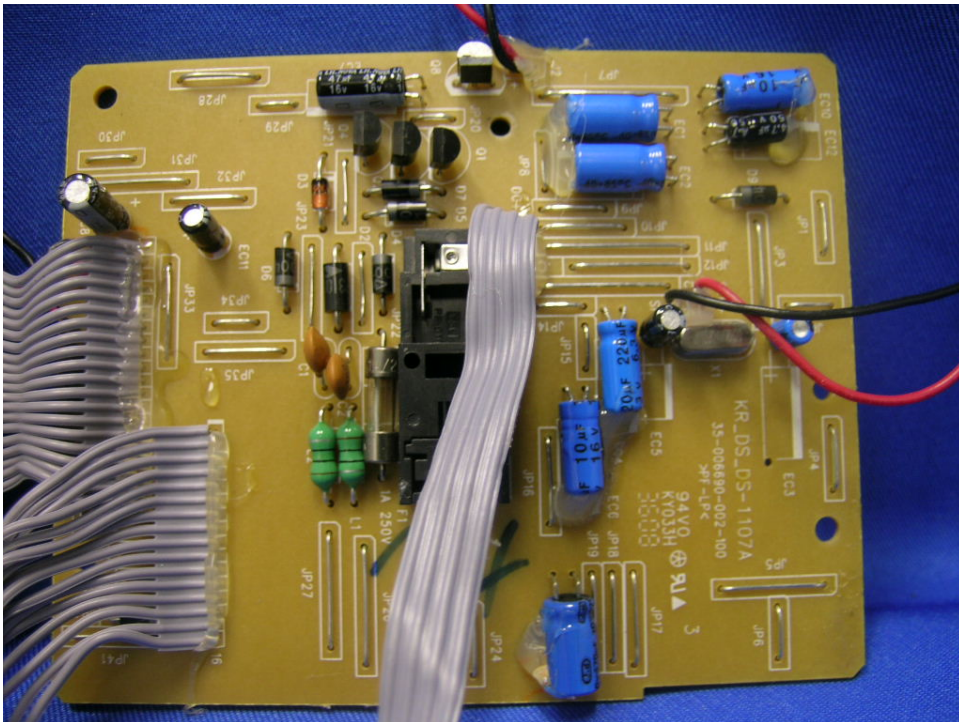
INTERTEK TESTING SERVICES

Internal photos – Model: CS5121

Base Unit Main PCB comp side (View 2)



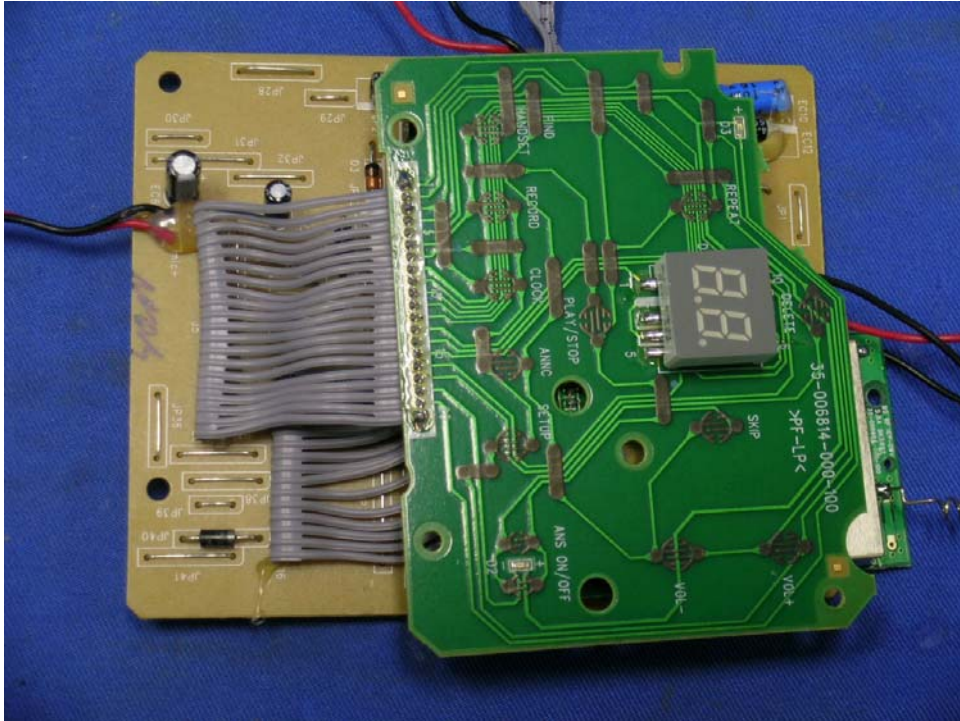
Base Unit Main PCB comp side (View 3)



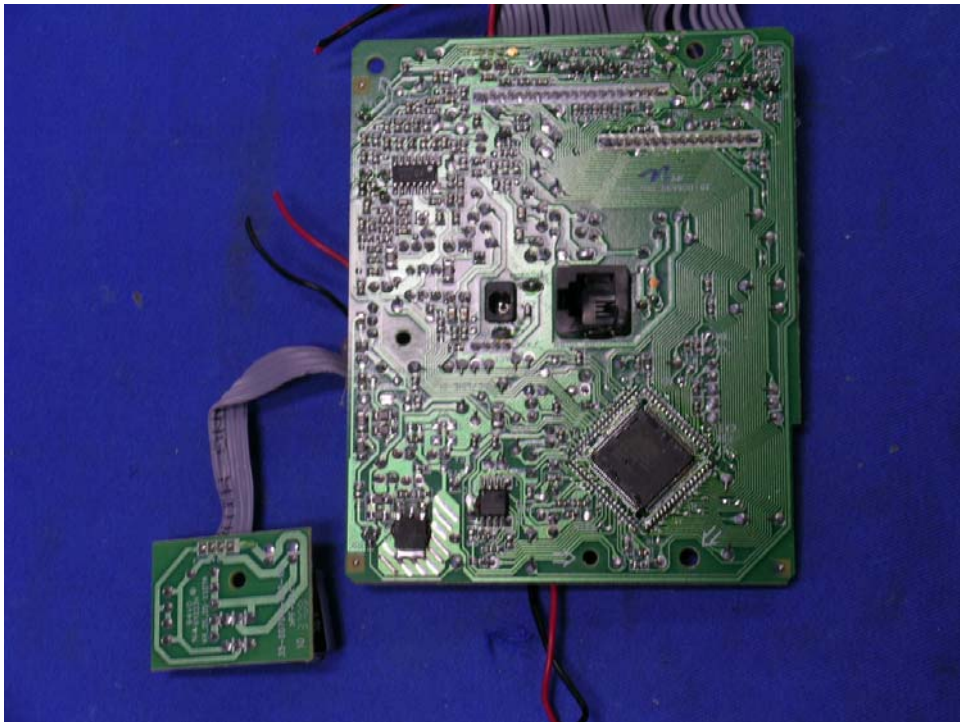
INTERTEK TESTING SERVICES

Internal photos – Model: CS5121

Base Unit Main PCB comp side (View 4)



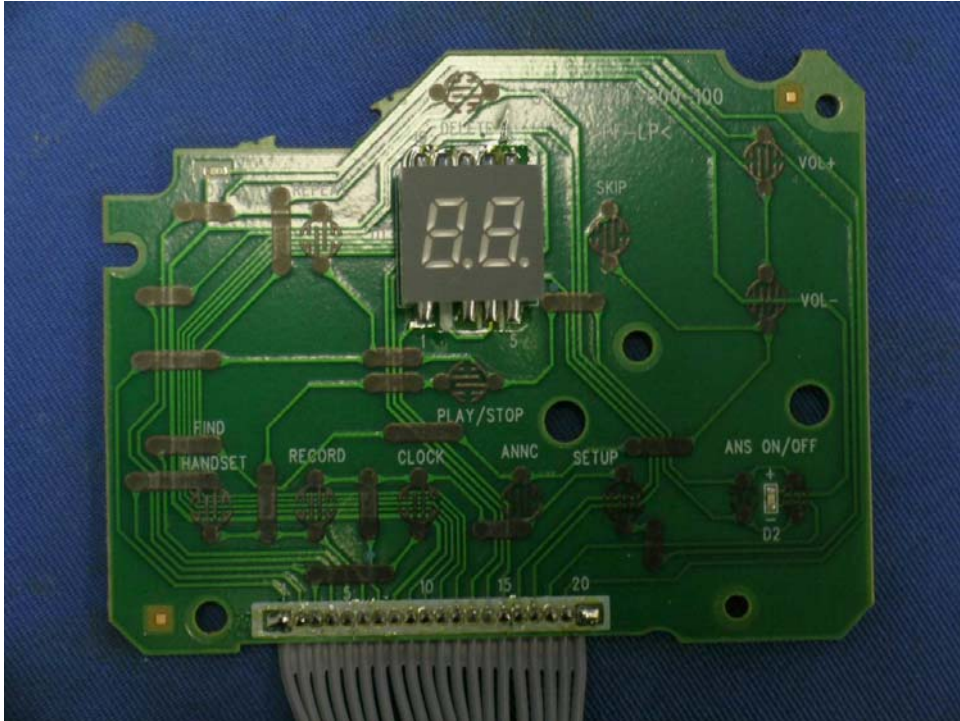
Base Unit Main PCB solder side



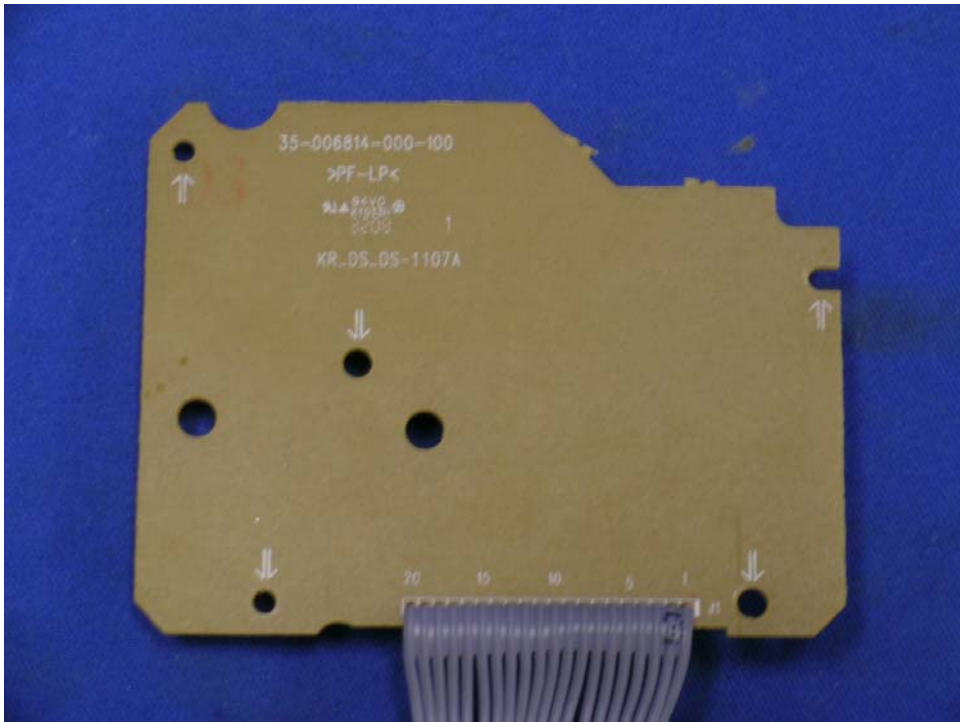
INTERTEK TESTING SERVICES

Internal photos – Model: CS5121

Base Unit DAM front side



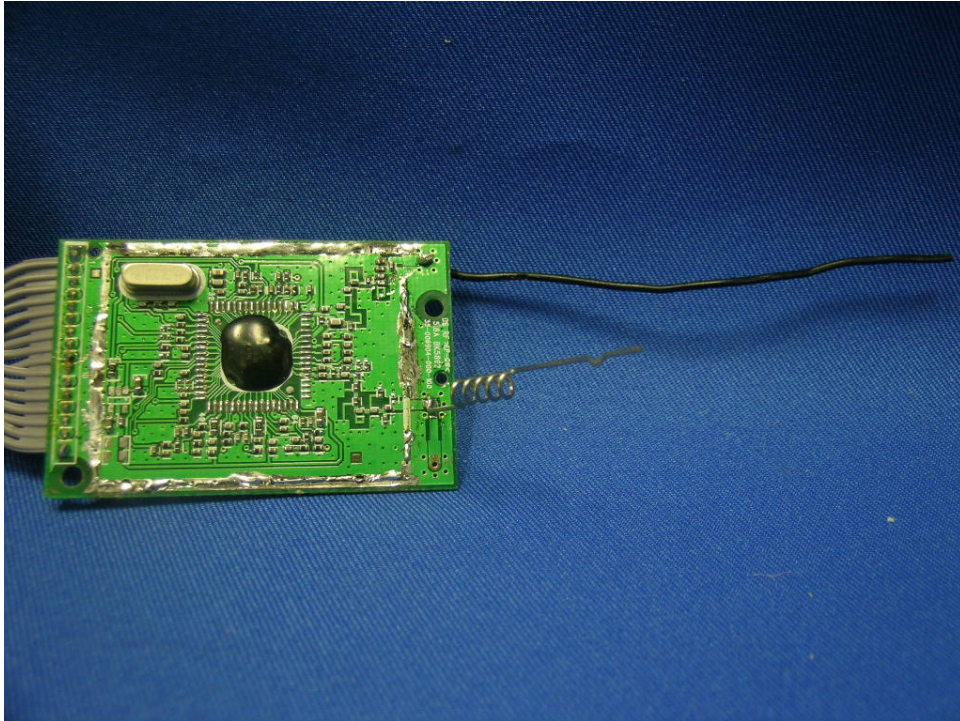
Base Unit DAM rear side



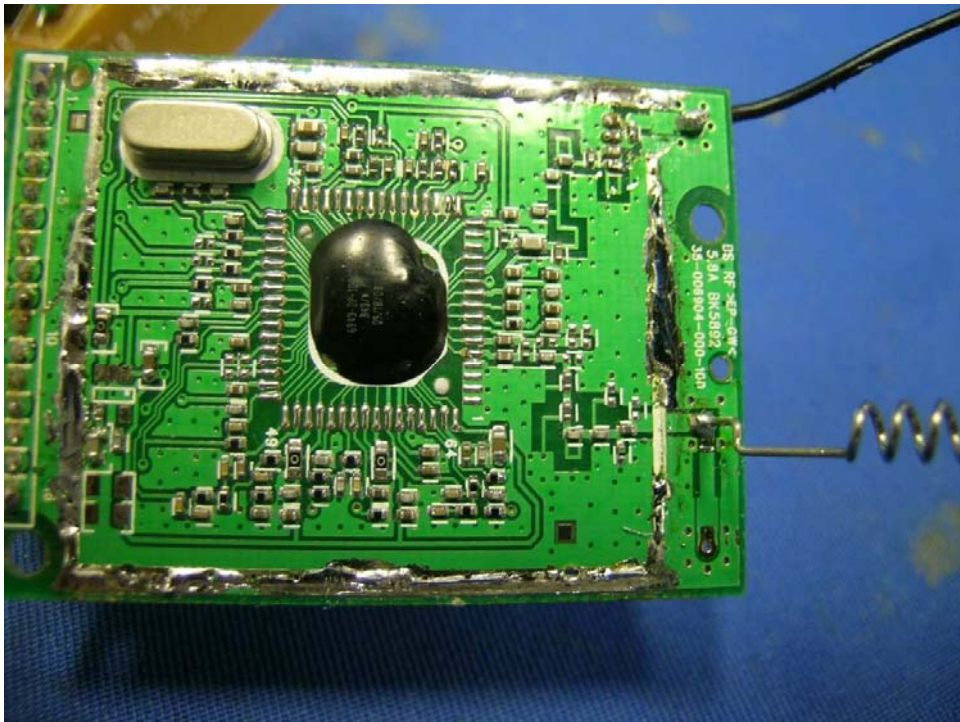
INTERTEK TESTING SERVICES

Internal photos – Model: CS5121

Base Unit Oscillator PCB comp side (View 1)



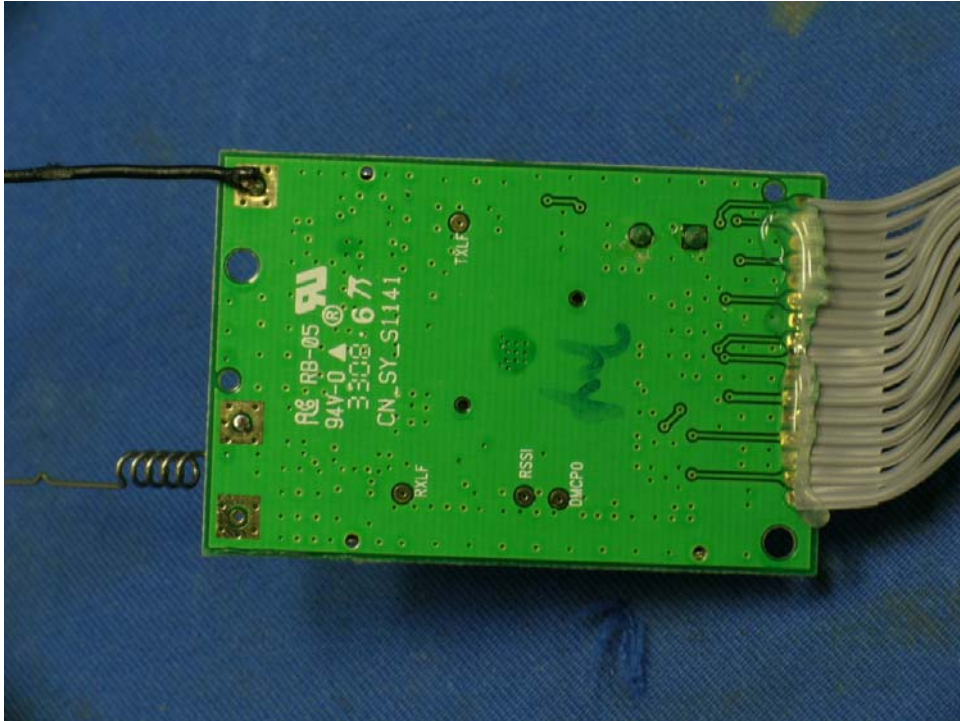
Base Unit Oscillator PCB comp side (View 2)



INTERTEK TESTING SERVICES

Internal photos – Model: CS5121

Base Unit Oscillator PCB solder side



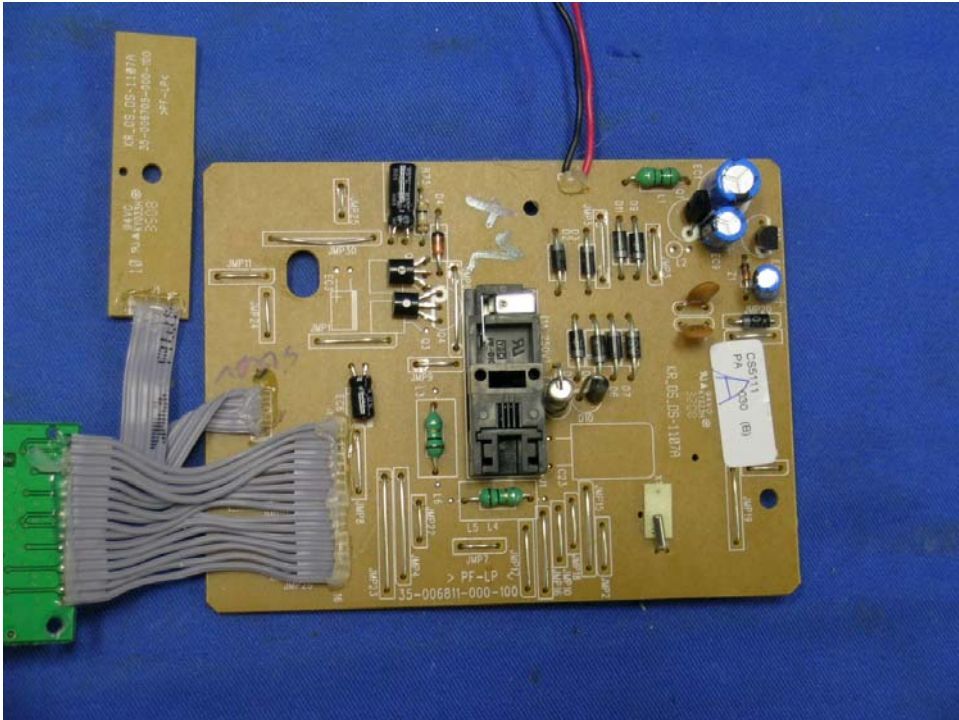
INTERTEK TESTING SERVICES

Internal photos – Model: CS5111

Base Unit assembly



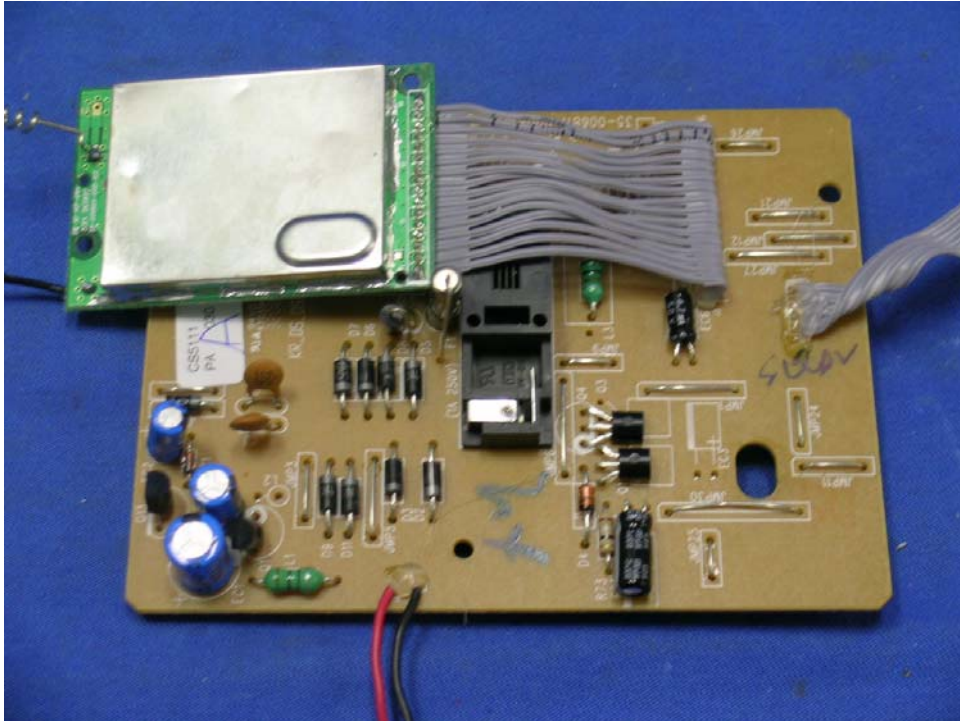
Base Unit Main PCB comp side (View 1)



INTERTEK TESTING SERVICES

Internal photos – Model: CS5111

Base Unit Main PCB comp side (View 2)



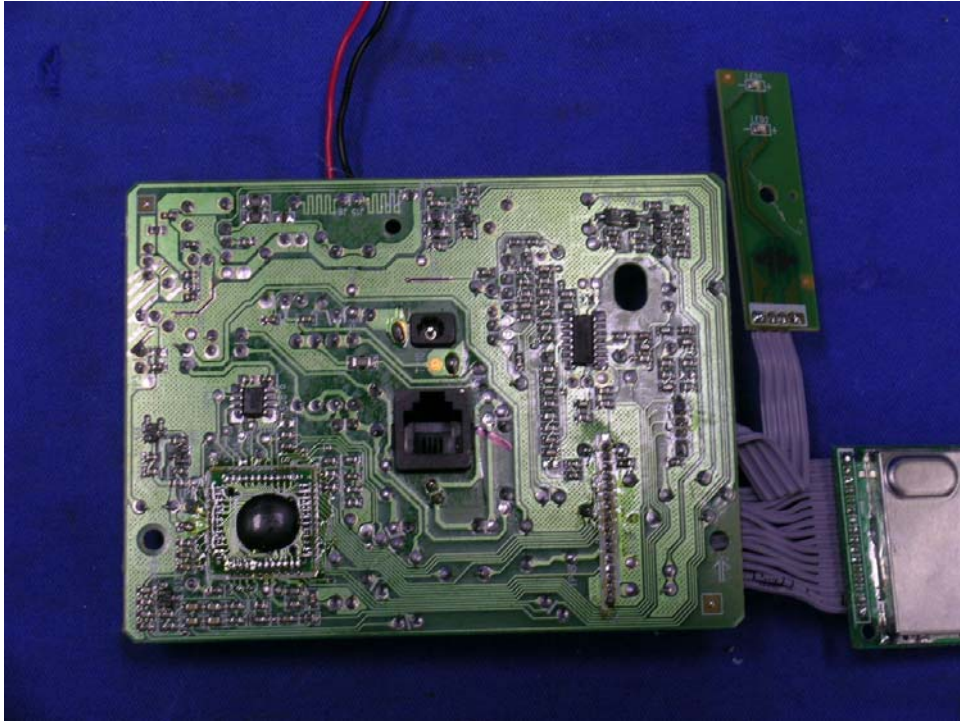
Base Unit Main PCB comp side (View 3)



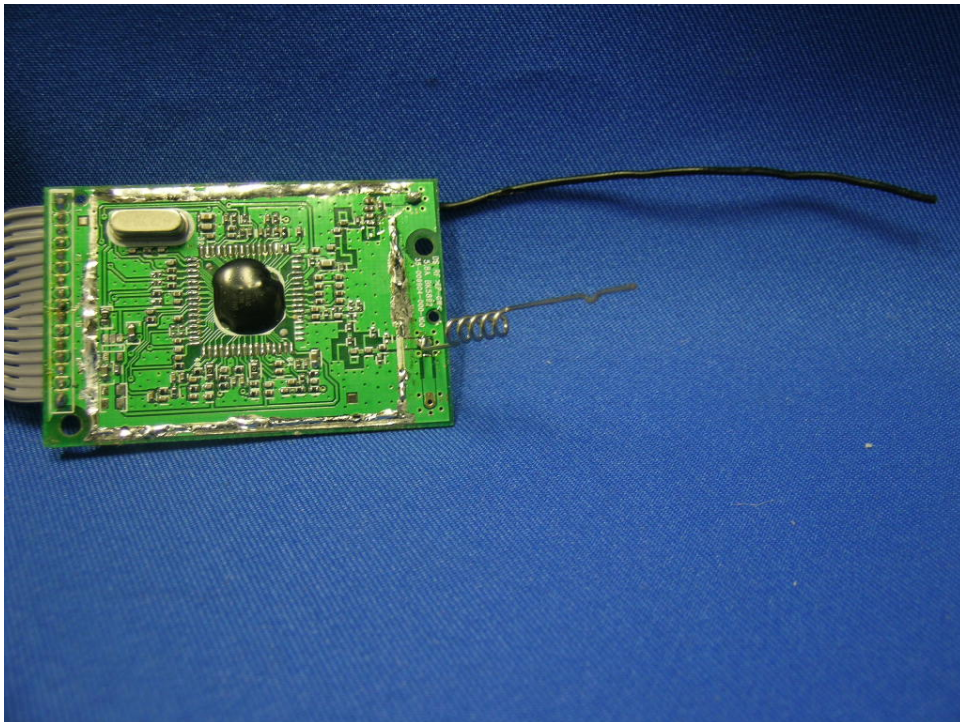
INTERTEK TESTING SERVICES

Internal photos – Model: CS5111

Base Unit Main PCB solder side



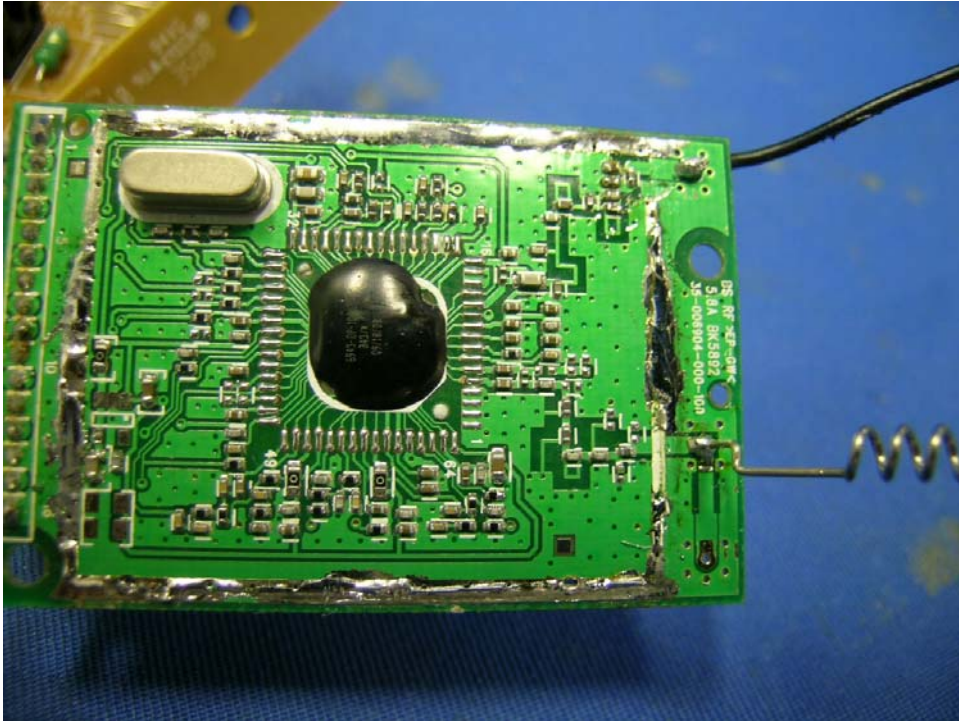
Base Unit Oscillator PCB comp side (View 1)



INTERTEK TESTING SERVICES

Internal photos – Model: CS5111

Base Unit Oscillator PCB comp side (View 2)



Base Unit Oscillator PCB solder side

