



User's manual

**TL72108/TL72208/TL72308/
TL72408**

**5.8 GHz cordless
telephone/answering system
with caller ID/call waiting**



Congratulations

on your purchase
of this AT&T product.

Before using this AT&T product, please
read the **Important safety information**
on pages 57-59 of this manual.

Please thoroughly read this user's
manual for all the feature operations
and troubleshooting information necessary
to install and operate your new
AT&T product. You can also visit our
website at **www.telephones.att.com** or call
1 (800) 222-3111.

In Canada, dial **1 (866) 288-4268.**

Model #: TL72108 (single handset)/TL72208 (bundle handset)/
TL72308 (triple handset)/TL72408 (quad handset)

Type: 5.8 GHz cordless telephone/answering system

Serial #: _____

Purchase date: _____

Place of purchase: _____

Both the model and serial number of your AT&T product can be found on the
bottom of the telephone base.

Save your sales receipt and original packaging in case it is necessary to return
your telephone for warranty service.



The ENERGY STAR® program (www.energystar.gov) recognizes and encourages the use of products that save energy and help protect our environment. We are proud to mark this product with the ENERGY STAR® label indicating it meets the latest energy efficiency guidelines.

TL72108/TL72208/TL72308/ TL72408

5.8 GHz cordless telephone/answering system with caller ID/call waiting



Table of contents

Getting started

- Quick reference guide 2
- Installation setup 4
- Telephone base and charger
installation 5
- Battery installation & charging 6
- Belt clip & optional headset 7
- Installation options 8

Telephone operation

- Handset operation 10
- Options while on calls 13
- Intercom 16
- Intercom call transfer 17
- Handset settings 19

Directory

- Directory 24
- New directory entries 25
- Directory review 27
- Directory search 28
- To dial, delete or
edit entries 29

Caller ID operation

- Caller ID operation 30
- To review the call log 33

Answering system operation

- Answering system operation 34
- Day & time announcement 35
- Outgoing announcements 36
- Changing feature options 37
- Message playback 38
- Recording & playing memos 39
- Message counter displays 40
- Answering system mode 41
- Remote access 42

Appendix

- Screen icons, indicator
lights & tones 43
- Handset display screen
messages 44
- Adding and registering
handsets 46
- Replacing a handset 47
- Troubleshooting 48
- Maintenance 56
- Important safety instructions 57
- FCC Part 68 and ACTA 60
- FCC Part 15 62
- Limited warranty 63
- Technical specifications 66
- Index 67

Quick reference guide

Handset

CHARGE

On when the handset is charging in the telephone base or charger.

CID

Press to display caller ID information (page 33).

PHONE/FLASH

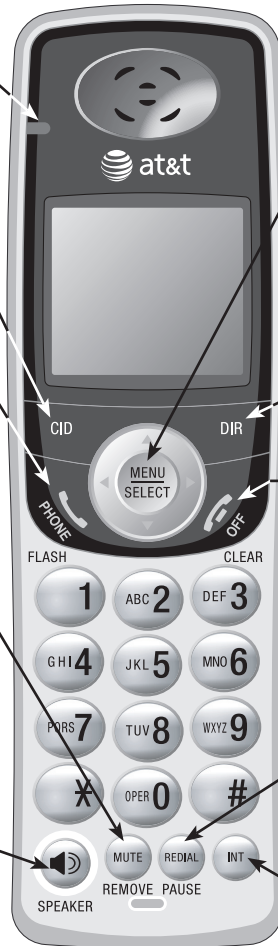
Press to make or answer a call. During a call, press to receive an incoming call if call waiting is activated (page 13).

MUTE/REMOVE

While on a call, press to mute microphone (page 14). While reviewing the call log, press to delete an individual entry, or press and hold to clear the caller ID log (page 33). While predialing, press to delete digits (page 10).

SPEAKER

Press to activate handset speakerphone. Press again to resume normal handset use (page 10).



MENU/SELECT

Press to enter the menu. While in the menu, press to select an item or save an entry or setting. Press or to scroll up or down while in menus. While entering names or numbers, press or to move the cursor to the left or right.

DIR

Press to display directory entries (page 27).

OFF/CLEAR

During a call, press to hang up. While using menus, press to cancel an operation, back up to the previous menu, or exit the menu display.

REDIAL/PAUSE

Press to view redial memory (page 11). While entering numbers, press and hold to insert a dialing pause (page 25).

INT

Press to initiate an intercom conversation or transfer a call (pages 16-18).

Feature menu

> Shows a highlighted item



Feature menu

DIRECTORY	Page 24
CALL LOG	Page 30
RINGER VOLUME ...	Page 19
RINGER TONE	Page 20
KEY TONE	Page 20
LANGUAGE	Page 21
CLR VOICE MAIL....	Page 22
DIAL TYPE.....	Page 23

Using menus

Press or to scroll through menu items.

Press **MENU/SELECT** to select or modify a highlighted item.

Press **OFF/CLEAR** to cancel an operation, back up to the previous menu, or exit the menu display.

Quick reference guide

Telephone base

IN USE

- On when handset is in use, when the answering system is answering an incoming call or you are registering a handset.
- Flashes when another telephone is in use on the same line, or you are deregistering a handset from the telephone base.
- Flashes quickly when there is an incoming call.



VOICEMAIL

Flashes when you have new voice mail. This service is provided by your local telephone company, (different from the answering system on the telephone base).

MESSAGE COUNTER

Number of messages (or during playback, message number currently playing).

◀/REPEAT

Press to repeat message; press **twice** to play previous message (page 38).

ANSWER ON

Press to turn answering system on or off (page 41).

CLOCK

Press to review or set clock (page 35).

SETUP

Press to hear setup options (page 37).

ANNC

Press to review or record announcement; press again to quit (page 36).



▶/■ PLAY/STOP

Press to start or stop message playback (page 38).

X/DELETE

Press to delete the message currently playing; press and you will hear a voice prompt to direct you to press the button again to delete all old messages when in idle mode (page 38).

▶▶/SKIP

Press to skip message (page 38).

VOLUME

Press to adjust playback volume (page 38).

HANDSET LOCATOR

Press to initiate beeping to locate misplaced handsets (page 10).

RECORD

Press to record a memo (page 39) or after pressing **ANNC** to record an outgoing announcement (page 36).

Installation setup

You must install and charge the battery before using the telephone.



See page 6 for easy instructions.

Your product may be shipped with a protective sticker covering the handset or telephone base display - remove it before use.

For customer service or product information, visit our website at **www.telephones.att.com** or call **1 (800) 222-3111**. In Canada, dial **1 (866) 288-4268**.

Avoid placing the telephone base too close to:

- Communication devices such as: television sets, VCRs, or other cordless telephones.
- Excessive heat sources.
- Noise sources such as a window with traffic outside, motors, microwave ovens, refrigerators, or fluorescent lighting.
- Excessive dust sources such as a workshop or garage.
- Excessive moisture.
- Extremely low temperature.
- Mechanical vibration or shock such as on top of the washing machine or work bench.

Telephone base and charger installation

Install the telephone base as shown below. Make sure that the electrical outlet is not controlled by a wall switch. Also, if you receive high speed internet through your telephone line (commonly referred to as DSL), install a DSL filter to the telephone line between the telephone base and the telephone wall jack. Contact your DSL service provider for more information about DSL filters.

Telephone base installation

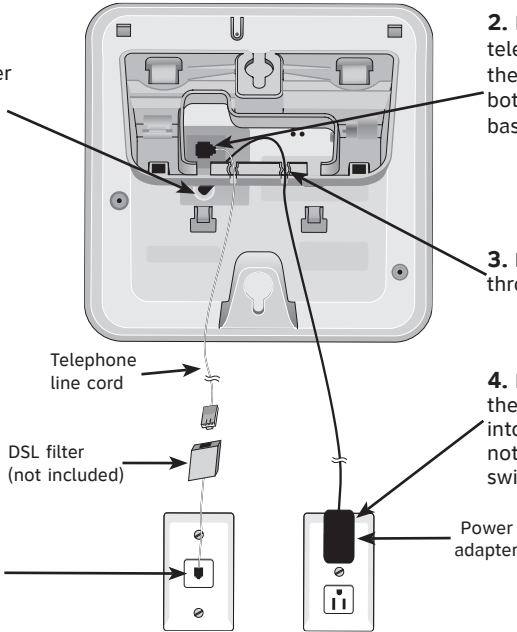
1. Plug the small end of the larger power adapter into the power jack at the bottom of the telephone base.

2. Plug one end of the telephone line cord into the telephone jack at the bottom of the telephone base.

3. Route cords through slots.

4. Plug the large end of the larger power adapter into an power outlet not controlled by a wall switch.

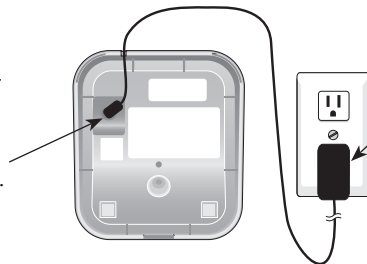
5. Plug the other end of the telephone line cord into a telephone jack.



Charger installation

1. Plug the small end of the smaller power adapter into the jack on the underside of the charger, then route the cord through the slot as shown.

2. Plug the large end of the smaller power adapter into an electrical outlet.



IMPORTANT INFORMATION

1. Use only the power adapter supplied with this product. To order a replacement power adapter, visit our website at www.telephones.att.com, or call **1 (800) 222-3111**. In Canada dial **1 (866) 288-4268**.
2. The power adapter is intended to be correctly oriented in a vertical or floor mount position.

Battery installation & charging

Install the battery as shown below. After installing the battery, you can make and receive short calls, but replace the handset in the telephone base or additional charger when not in use. For optimal performance, charge the handset battery for at least 16 hours before use. When fully charged, the handset battery provides approximately five hours of talk time and three days of standby time.



Step 1

Plug the battery securely into the plug inside the handset battery compartment, matching the color-coded label.



Step 2

Insert the supplied battery as indicated. Insert the top edge (contacts and tab) in first, then push downwards on the lower portion of the battery.



Step 3

Align the cover flat against the battery compartment cover, then slide it upwards until it clicks into place.

Step 4

Charge the handset, by placing the handset face up in the telephone base or in the additional charger. The **CHARGE** light will be on when charging.



IMPORTANT INFORMATION

1. Use only the battery supplied with this product. To order a replacement or spare battery (AT&T model 27910, part number 89-0099-00-00) or equivalent, visit our website at www.telephones.att.com, or call **1 (800) 222-3111**. In Canada dial **1 (866) 288-4268**.
2. See the **Troubleshooting** section on page 48 for charging issues.

Belt clip & optional headset



Installation

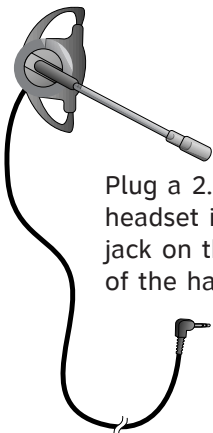
Snap belt clip into notches on both sides of handset.



Removal

Pull and unlock one flap from the notch first before detaching the whole belt clip from handset.

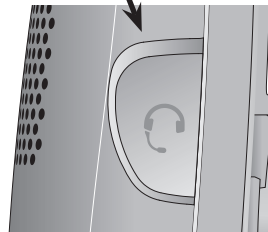
For handsfree headset conversations, use any industry standard 2.5 mm headset (purchased separately). For best results, use an AT&T 2.5 mm headset. To purchase a headset, visit our website at www.telephones.att.com or call **1 (800) 222-3111**. In Canada, dial **1 (866) 288-4268**.



Plug a 2.5 mm headset into the jack on the side of the handset.



Lift the rubber flap here.



Side of handset.



Installation options



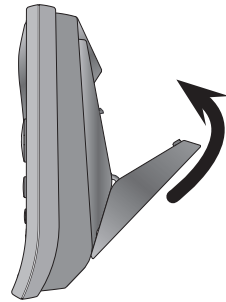
NOTE: The mounting bracket must be used for both tabletop use and wall mounting positions

The telephone base comes with the mounting bracket already installed for desktop use. If wall mounting is desired, a telephone outlet wall mounting plate with mounting studs is required. This mounting plate with studs may be available for purchase from any hardware or consumer electronics retailers and may require professional installation.

Desktop to wall mount installation

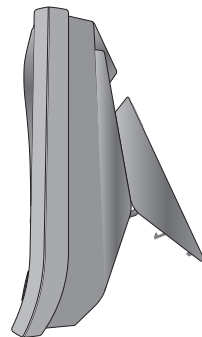
To install the telephone base in the wall mount position, make sure that you first unplug all cords connected to the telephone base before you begin.

1. Press the bracket upwards until the bracket clicks into place and is secure.



2. Plug the telephone line cord and power adapter plug into the telephone base and place the cords in the bracket grooves.

3. Plug the power adapter and telephone line cord into the wall outlets, then align the mounting studs on the telephone outlet plate with the mounting holes on the bracket.



4. Place the telephone base mounting holes just above the mounting studs, then slide the telephone base down until it is secure.

Installation options

Wall mount to desktop installation

To change the telephone base from the wall mount position to desktop position, make sure that you first unplug the power adapter and telephone line cord from the wall outlets before you begin.

1. Slide the telephone base upwards, then pull the telephone base away from the wall off of the mounting studs.
2. Remove the telephone line cord and power adapter plug from the telephone base.
3. Press the bracket downwards until the bracket clicks into place and is secure.
4. Plug the telephone line cord into the telephone base and telephone wall jack, then plug the power adapter plug into the telephone base and to an electrical wall outlet not controlled by a wall switch (see page 5).

