

PA17F

04

2.4GHz • GIGAPHONE



MESSAGE  
WAITING

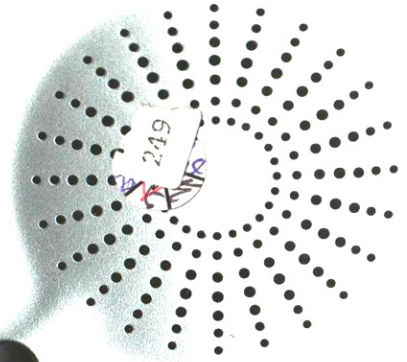
POWER

LINE  
IN USE

HANDSET  
CHARGING

**vtech**

MULTI-HANDSET  
CORDLESS PHONE SYSTEM



VOLUME



FLASH



MUTE



HOLD



REDIAL



QUICK MEMORY



M 1



M 2



M 3

SPEAKERPHONE



MODEL 285T  
MANUFACTURED BY: COMMUNICATIONS, LTD.  
CONFORMS WITH FEDERAL COMMUNICATIONS COMMISSION (FCC) PART 15 CLASS B DIGITAL DEVICE REQUIREMENTS AND CAN BE USED IN ALL UNLICENSED FREQUENCY BANDS.  
FEDERAL TRADE COMMISSION (FTC) IDENTIFICATION NUMBER: 68101  
THIS DEVICE IS NOT INTENDED TO BE USED IN ANY AREA WHERE RADIO FREQUENCY INTERFERENCE MAY CAUSE HARMFUL INTERFERENCE TO OTHER LICENSED DEVICES. IF YOU EXPERIENCE INTERFERENCE, YOU SHOULD STOP USING THE DEVICE IMMEDIATELY AND CONTACT THE MANUFACTURER FOR ASSISTANCE.  
THE USER SHALL BE RESPONSIBLE FOR THE PROPER USE OF THE DEVICE. THE USER SHALL NOT ACCEPT ANY LIABILITY FOR DAMAGE TO OTHER DEVICES OR PERSONS OR PROPERTY THAT MAY CAUSE INTERFERENCE TO OTHER LICENSED DEVICES.  
REUSE OF COMMUNICATIONS MAY NOT BE ENSURED WHEN USING THIS DEVICE.

CALLER ID: 1-800-455-1111  
TEXT: 1-800-455-1111  
FAX: 1-800-455-1111  
EMAIL: 1-800-455-1111

BSID  
36 000073 523133 4

SIN 856100000111003

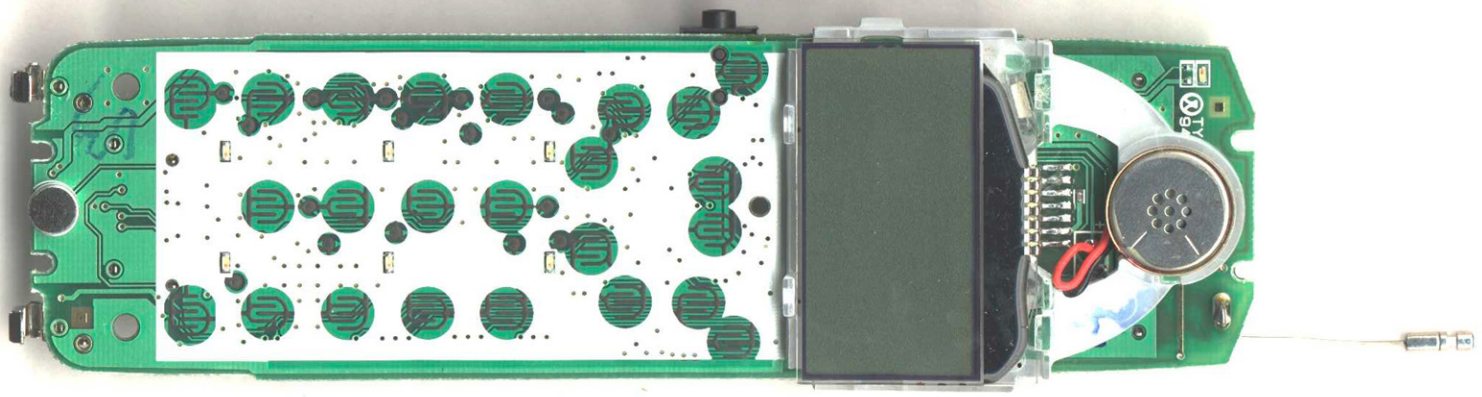
40

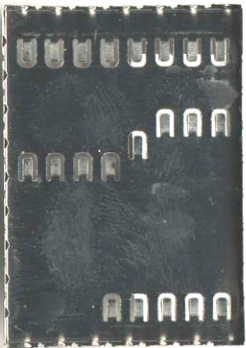
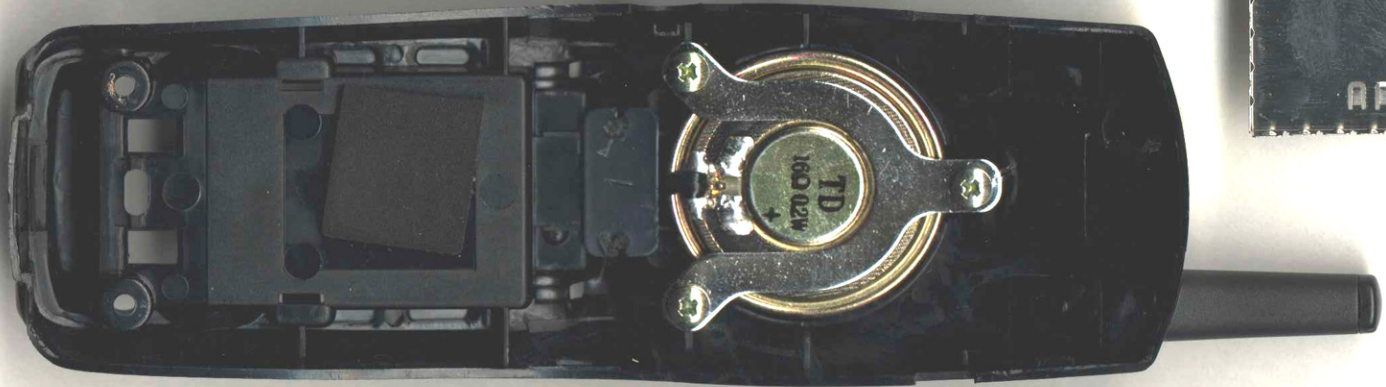
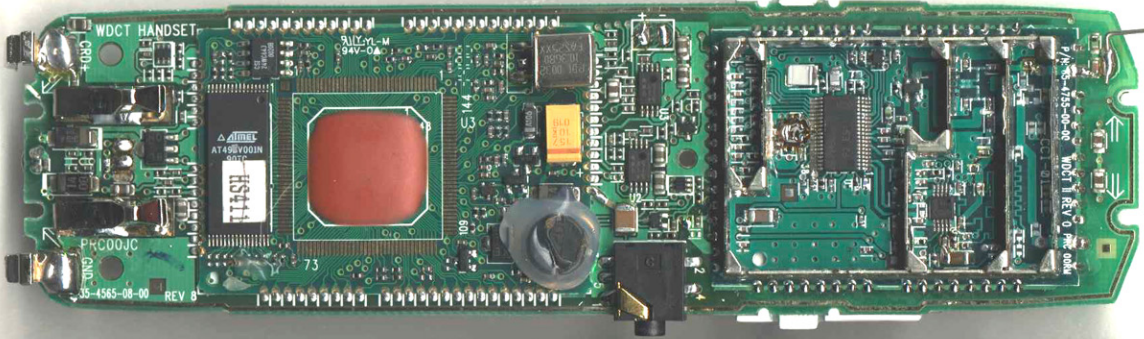
Vtech  
COMMUNICATIONS, LTD.  
81.55  
LISTED  
CUL US  
VTECH COMMUNICATIONS, LTD.  
20171 900-6  
CLASS 2 TOWER SOURCE ONLY



Pa02F

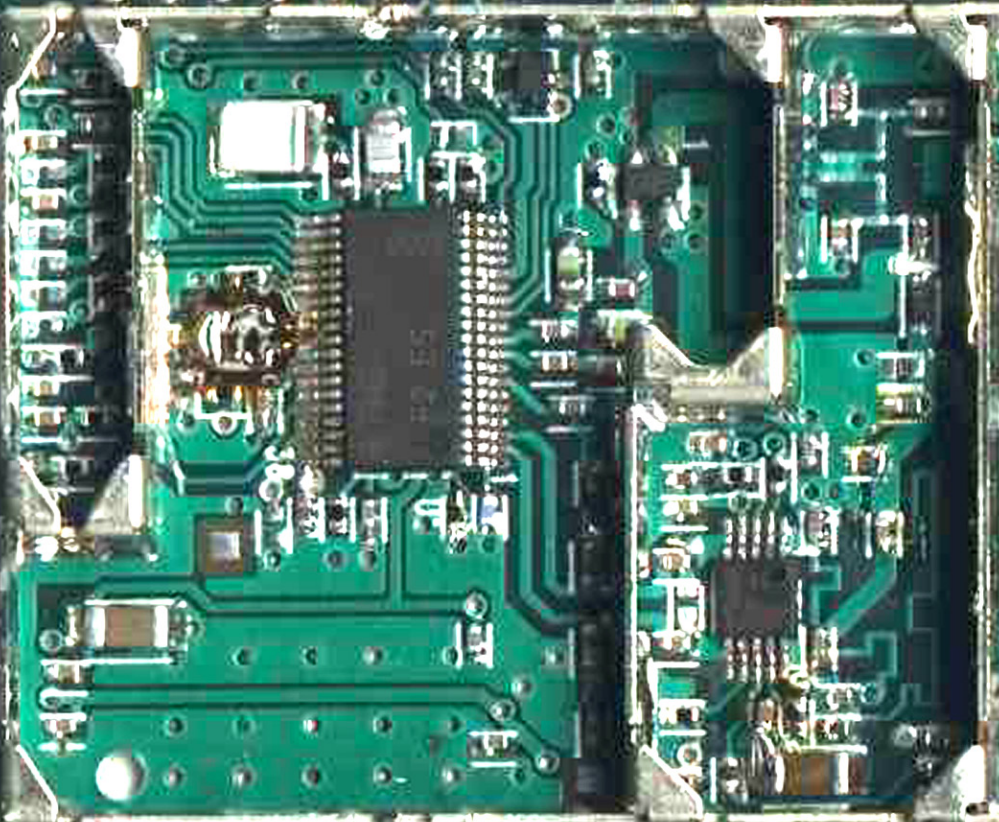
6 1/2 73





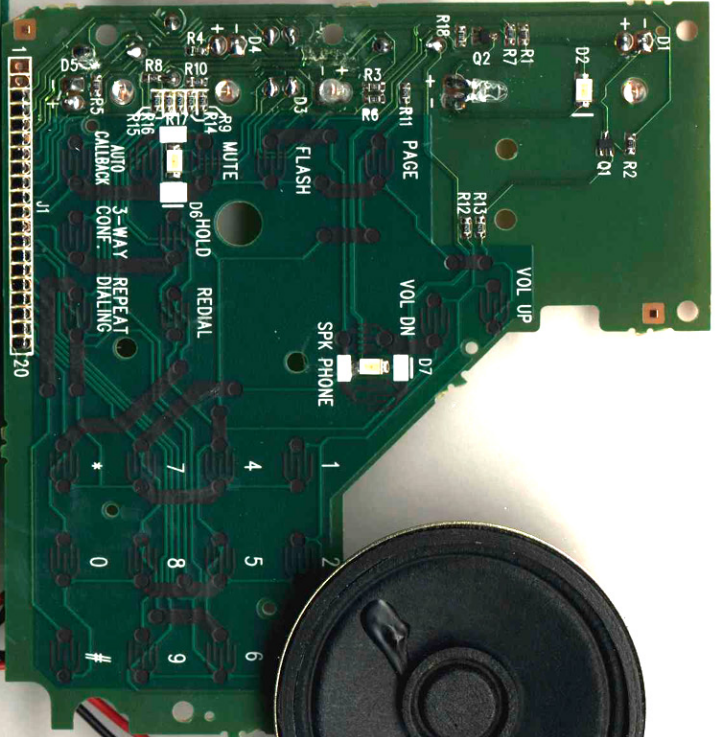
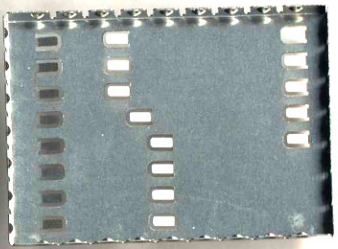
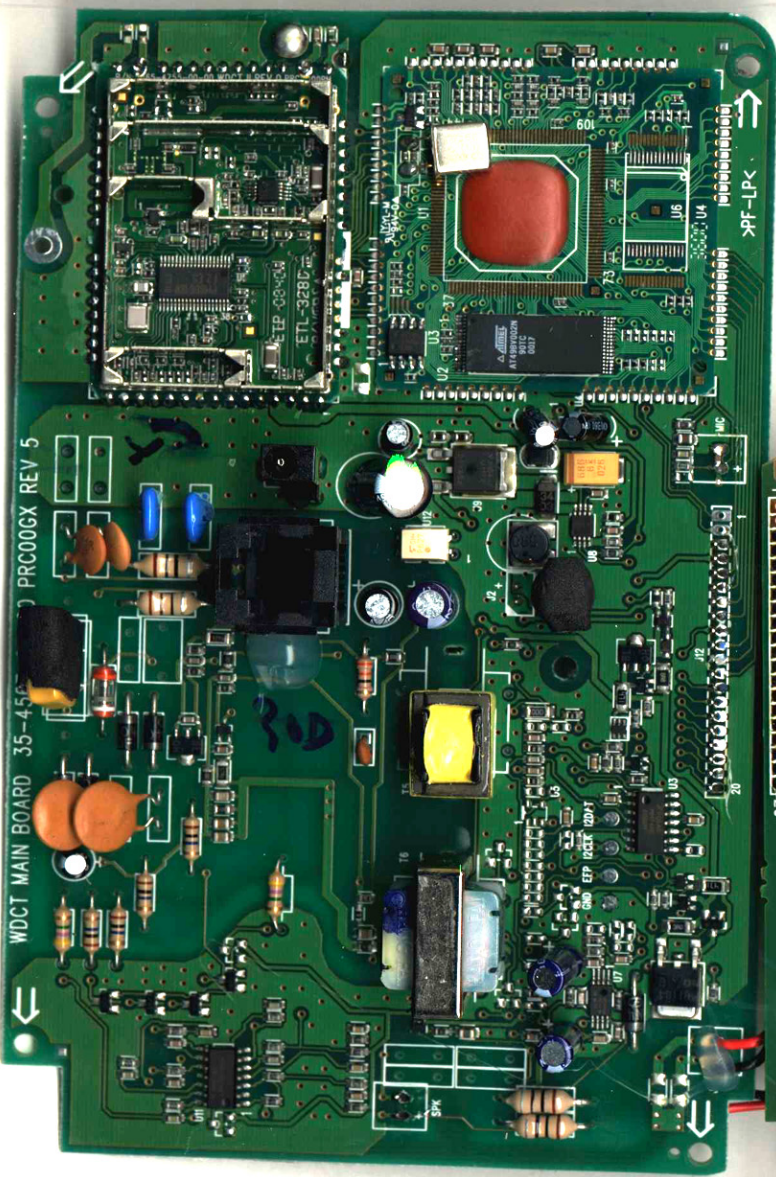
P/N: 65-4755-00-00 WDC T II REV 0 PNC 00RM

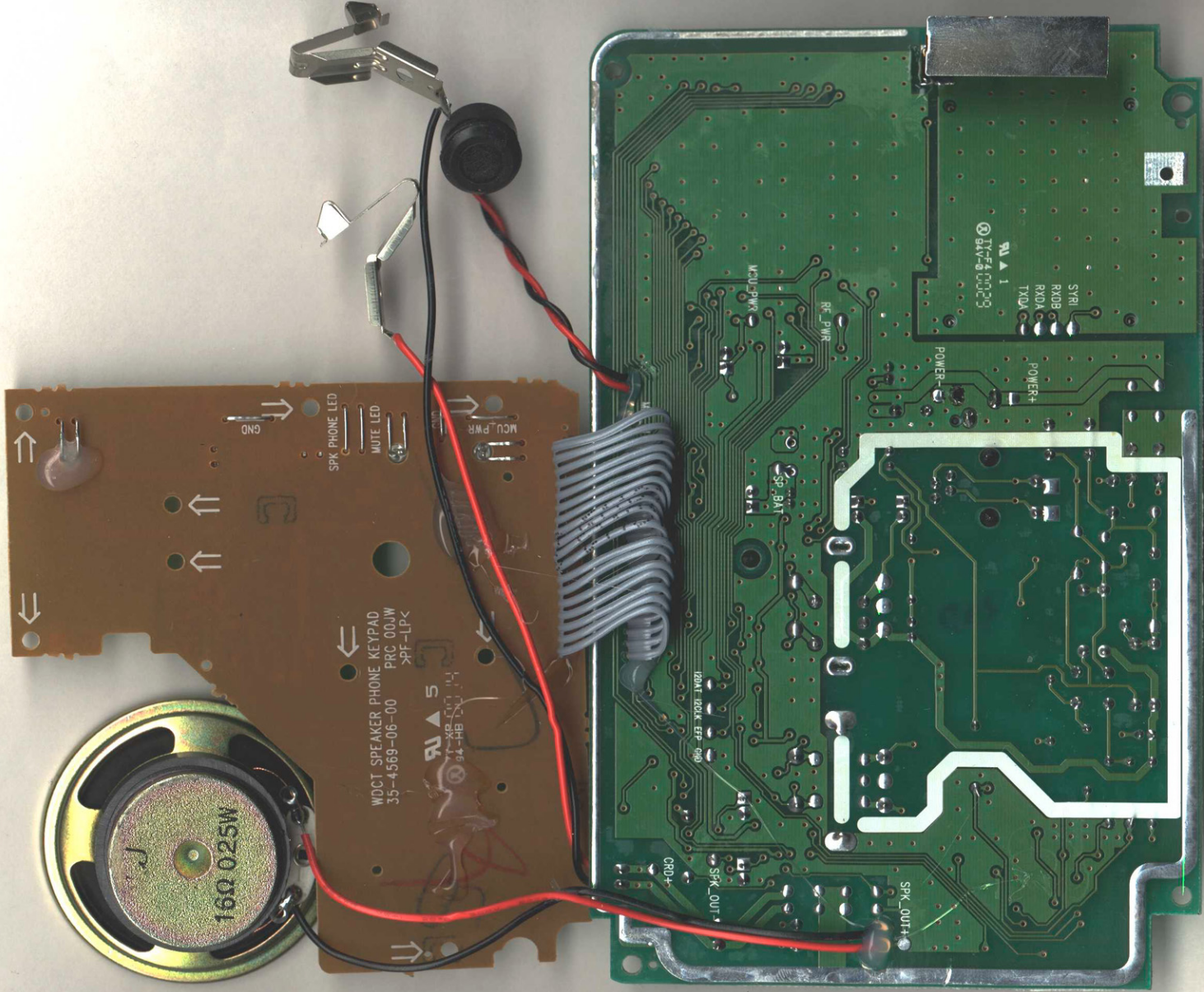
CCI-01



2

4





SPK\_PHONE\_LED  
MUTE\_LED  
MCU\_PWR  
GND

WDCT SPEAKER KEYPAD  
35-4569-06-00  
PRC 00JW  
>PF-LP<

RU 5  
94-HB 0014

MS25W

RU 1  
812FA 00203

POWER+  
POWER-  
SVRI  
R00B  
R00A  
T00A

RF\_PWR

MCU\_PWR

SPK\_BAT

12V1E1  
R00K  
EFP  
090

CRD+

SPK\_OUT+

P/N: 65-4755-00 WDCT II REV 0 PRC 00RM

ETL-328C

ETP 3840

87C23