

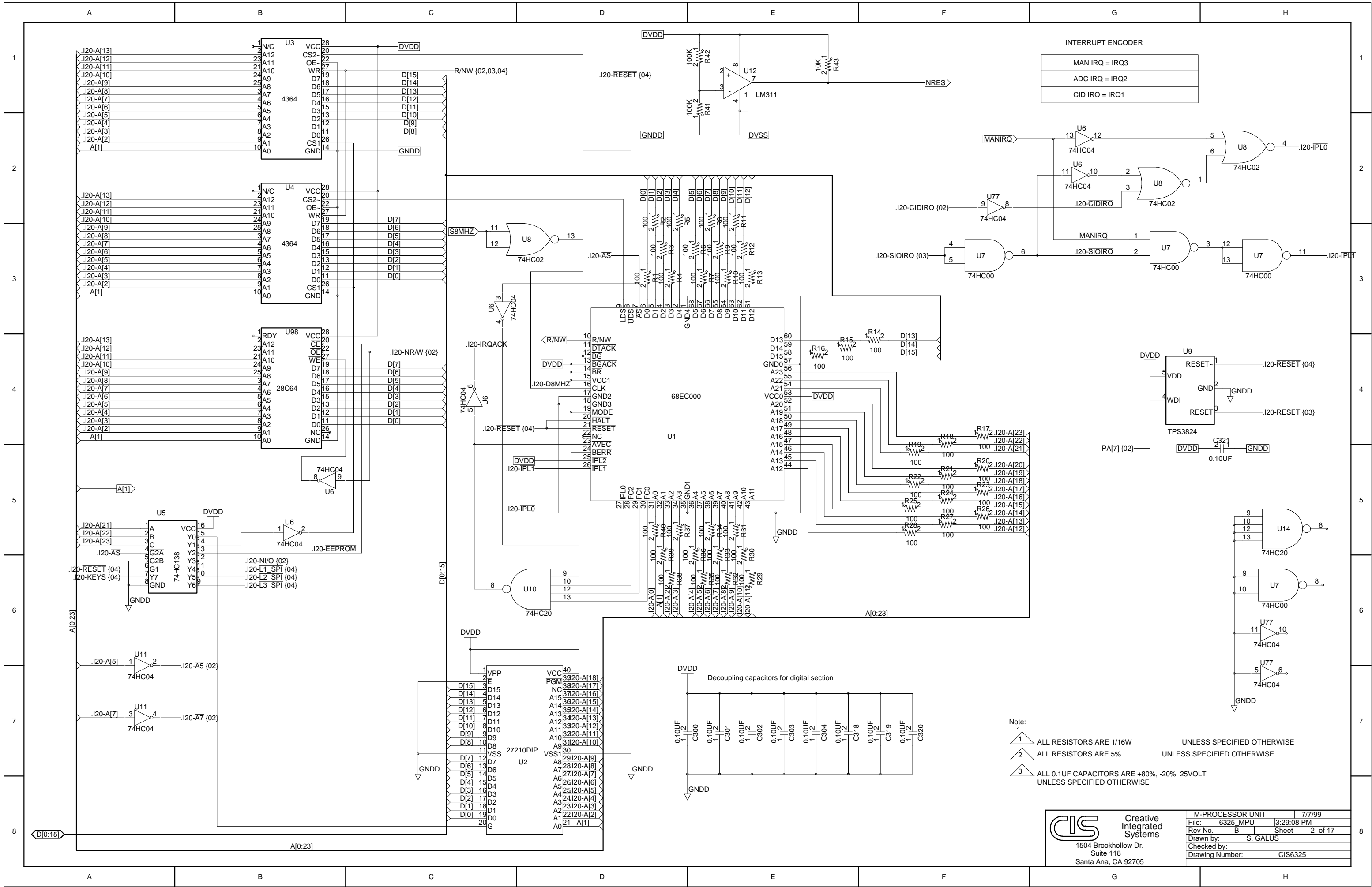
Note:  
 1 ALL RESISTORS ARE 1/16W UNLESS SPECIFIED OTHERWISE  
 2 ALL RESISTORS ARE 5% UNLESS SPECIFIED OTHERWISE

LAST USED				
I C	TRANSISTOR	DIODE	RESISTOR	CAPACITOR
U99	Q75	D98	R596	C321

AVDD — AVDD  
 AVSS — AVSS  
 DVDD — DVDD  
 GNDD — GNDD  
 DVSS — DVSS

**CIS** Creative Integrated Systems  
 1504 Brookhollow Dr.  
 Suite 118  
 Santa Ana, CA 92705

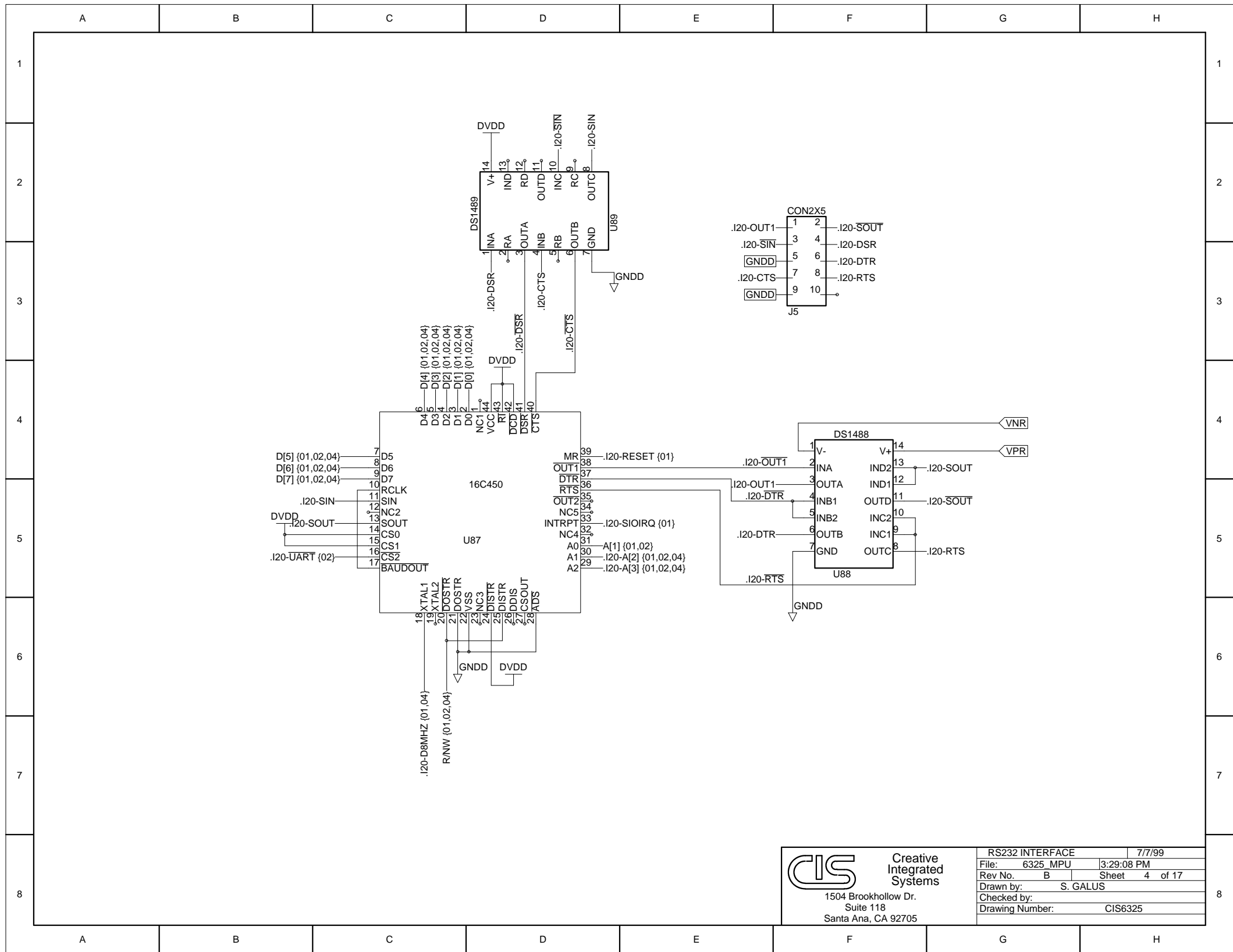
CONTROLLER TOP		7/6/99
File:	6325_TOP	4:28:14 PM
Rev No.:	B	Sheet 1 of 17
Drawn by:	S. GALUS	
Checked by:		
Drawing Number:	CIS6325	



Note:

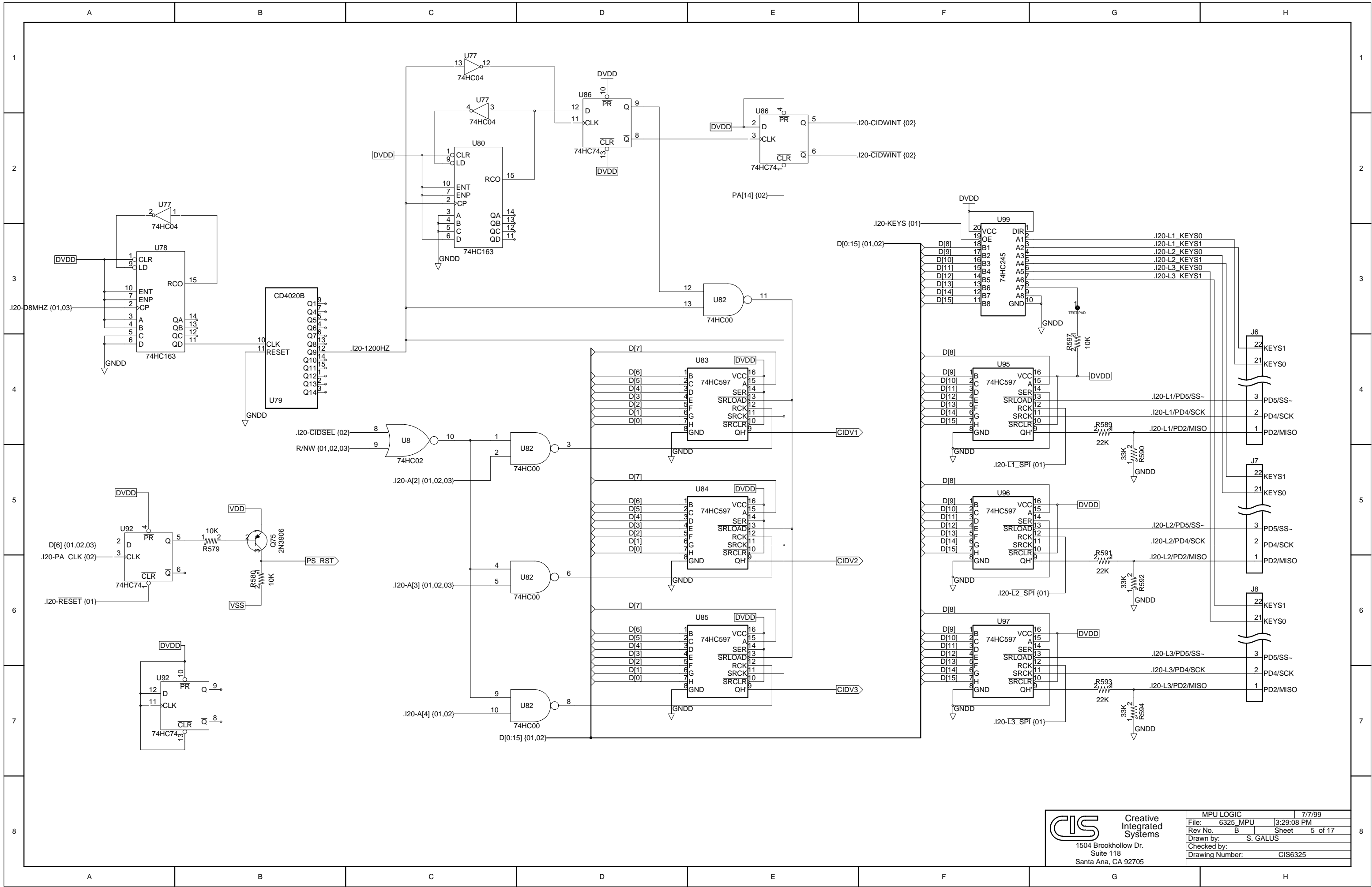
- 1 ALL RESISTORS ARE 1/16W UNLESS SPECIFIED OTHERWISE
- 2 ALL RESISTORS ARE 5% UNLESS SPECIFIED OTHERWISE
- 3 ALL 0.1UF CAPACITORS ARE +80%, -20% 25VOLT UNLESS SPECIFIED OTHERWISE

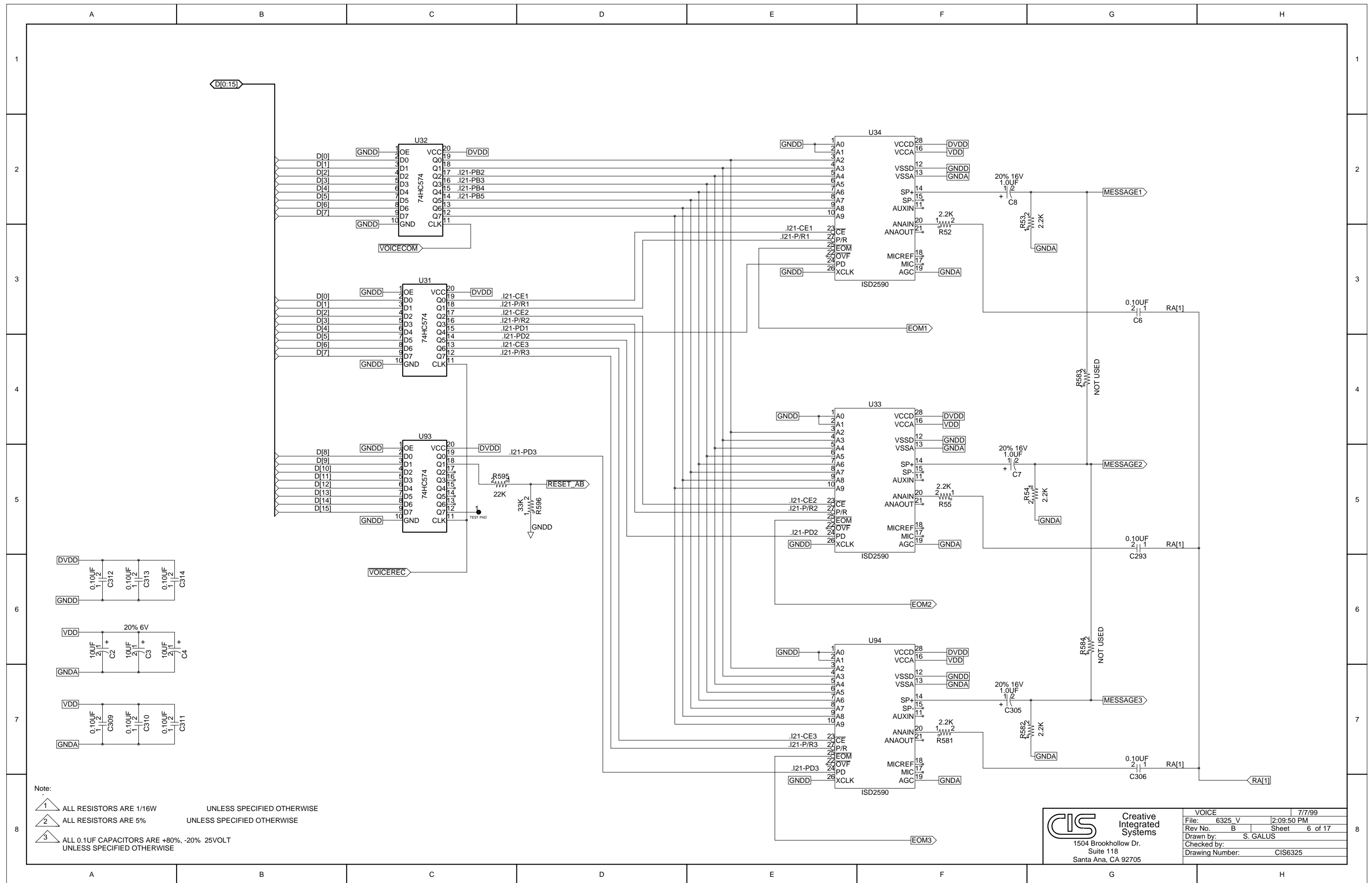





**Creative Integrated Systems**  
 1504 Brookhollow Dr.  
 Suite 118  
 Santa Ana, CA 92705

RS232 INTERFACE		7/7/99
File:	6325_MPU	3:29:08 PM
Rev No.	B	Sheet 4 of 17
Drawn by:	S. GALUS	
Checked by:		
Drawing Number:	CIS6325	



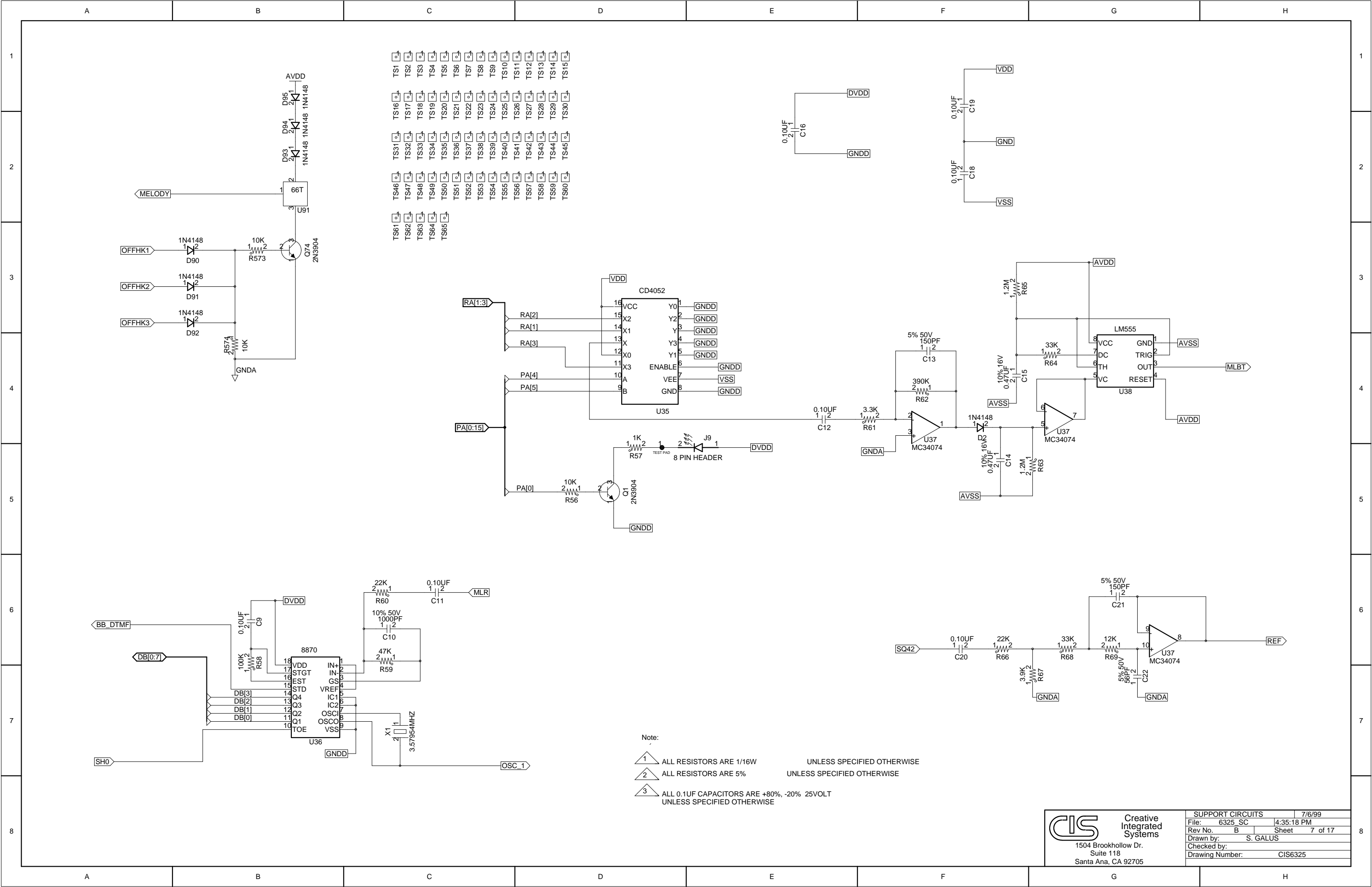


Note:

- 1 ALL RESISTORS ARE 1/16W UNLESS SPECIFIED OTHERWISE
- 2 ALL RESISTORS ARE 5% UNLESS SPECIFIED OTHERWISE
- 3 ALL 0.1UF CAPACITORS ARE +80%, -20% 25VOLT UNLESS SPECIFIED OTHERWISE

**CIS** Creative Integrated Systems  
 1504 Brookhollow Dr.  
 Suite 118  
 Santa Ana, CA 92705


VOICE	7/7/99
File: 6325_V	2:09:50 PM
Rev No. B	Sheet 6 of 17
Drawn by: S. GALUS	
Checked by:	
Drawing Number: CIS6325	

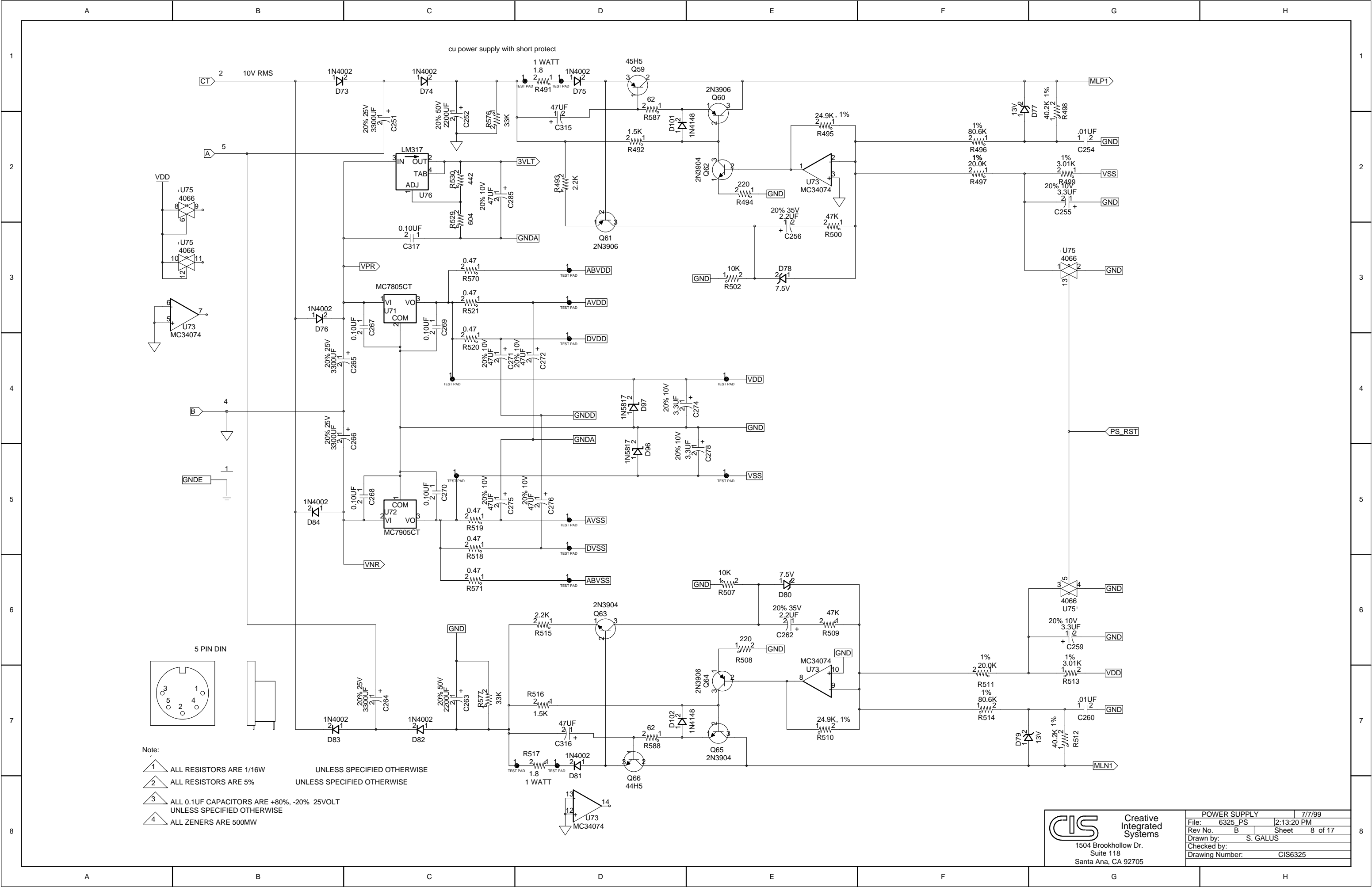


- TS1
- TS2
- TS3
- TS4
- TS5
- TS6
- TS7
- TS8
- TS9
- TS10
- TS11
- TS12
- TS13
- TS14
- TS15
- TS16
- TS17
- TS18
- TS19
- TS20
- TS21
- TS22
- TS23
- TS24
- TS25
- TS26
- TS27
- TS28
- TS29
- TS30
- TS31
- TS32
- TS33
- TS34
- TS35
- TS36
- TS37
- TS38
- TS39
- TS40
- TS41
- TS42
- TS43
- TS44
- TS45
- TS46
- TS47
- TS48
- TS49
- TS50
- TS51
- TS52
- TS53
- TS54
- TS55
- TS56
- TS57
- TS58
- TS59
- TS60
- TS61
- TS62
- TS63
- TS64
- TS65

Note:

- 1 ALL RESISTORS ARE 1/16W UNLESS SPECIFIED OTHERWISE
- 2 ALL RESISTORS ARE 5% UNLESS SPECIFIED OTHERWISE
- 3 ALL 0.1UF CAPACITORS ARE +80%, -20% 25VOLT UNLESS SPECIFIED OTHERWISE

 <b>Creative Integrated Systems</b> 1504 Brookhollow Dr. Suite 118 Santa Ana, CA 92705	SUPPORT CIRCUITS	7/6/99
	File: 6325_SC	4:35:18 PM
	Rev No. B	Sheet 7 of 17
	Drawn by: S. GALUS	
	Checked by:	
Drawing Number:	CIS6325	

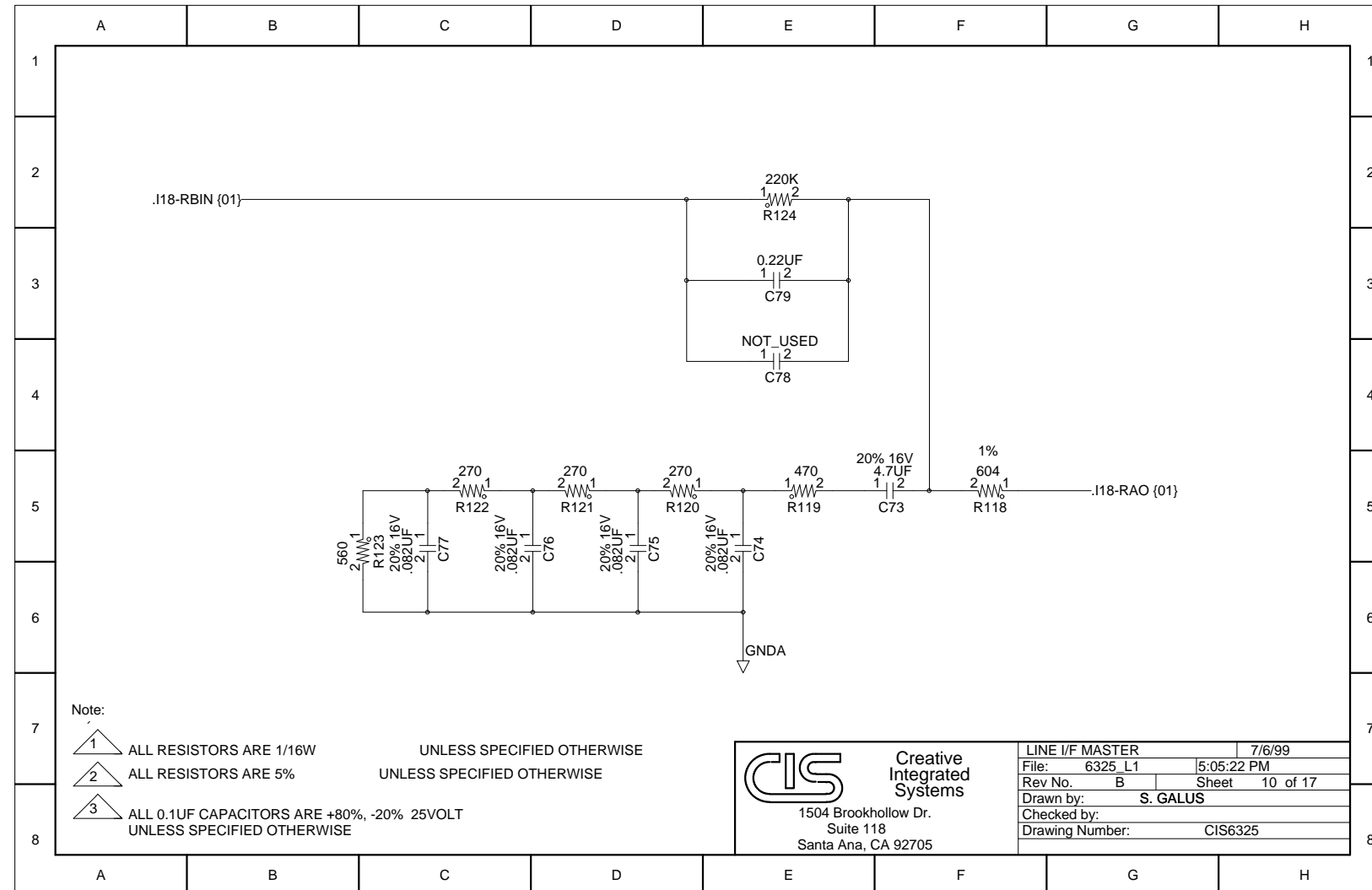


- Note:
- 1 ALL RESISTORS ARE 1/16W UNLESS SPECIFIED OTHERWISE
  - 2 ALL RESISTORS ARE 5% UNLESS SPECIFIED OTHERWISE
  - 3 ALL 0.1UF CAPACITORS ARE +80%, -20% 25VOLT UNLESS SPECIFIED OTHERWISE
  - 4 ALL ZENERS ARE 500MW

<p>Creative Integrated Systems 1504 Brookhollow Dr. Suite 118 Santa Ana, CA 92705</p>	POWER SUPPLY	7/7/99
	File: 6325_PS	2:13:20 PM
	Rev No. B	Sheet 8 of 17
	Drawn by: S. GALUS	
	Checked by:	
Drawing Number:	CIS6325	







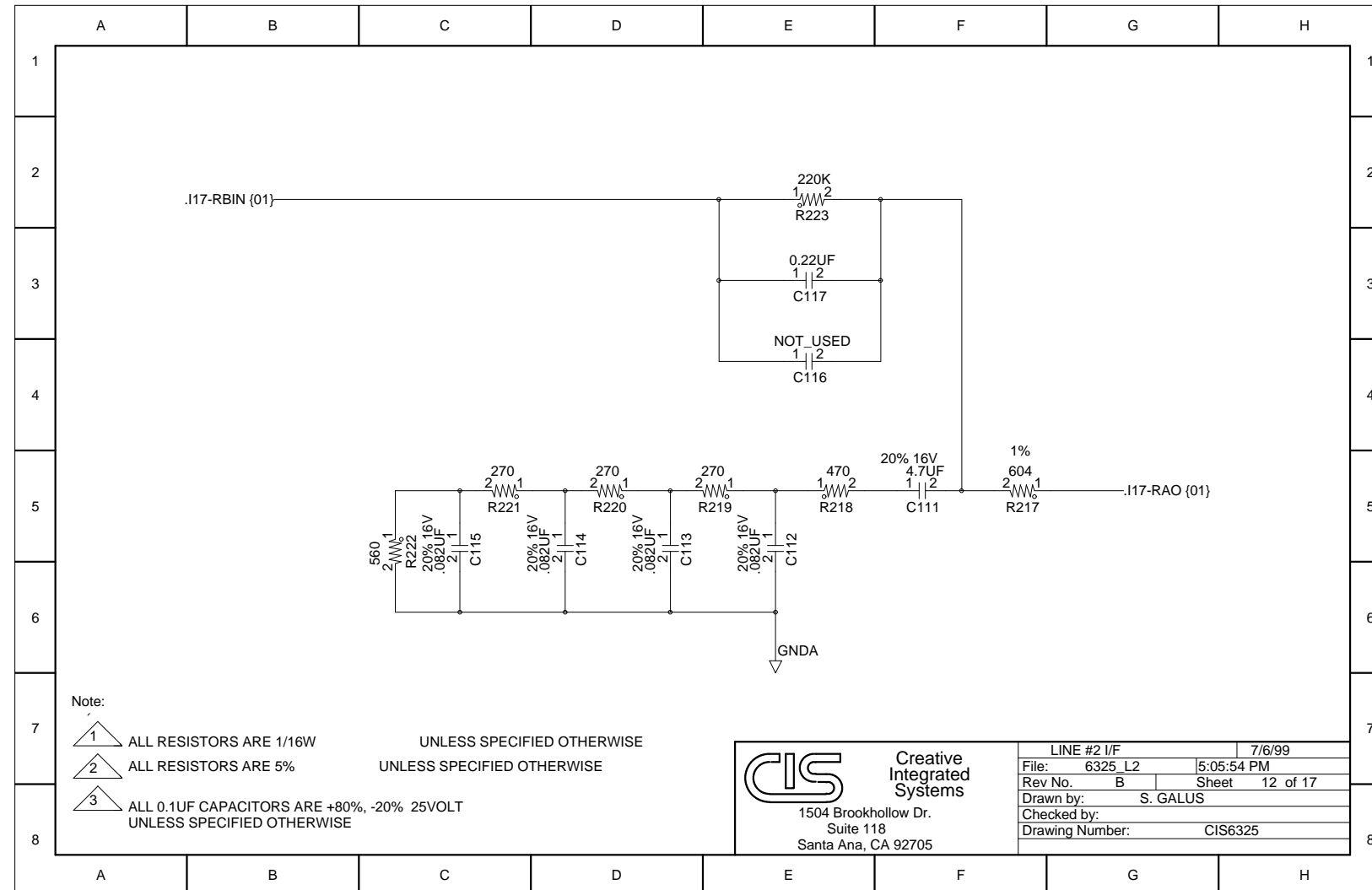
Note:

- 1 ALL RESISTORS ARE 1/16W UNLESS SPECIFIED OTHERWISE
- 2 ALL RESISTORS ARE 5% UNLESS SPECIFIED OTHERWISE
- 3 ALL 0.1UF CAPACITORS ARE +80%, -20% 25VOLT UNLESS SPECIFIED OTHERWISE

**CIS** Creative Integrated Systems  
 1504 Brookhollow Dr.  
 Suite 118  
 Santa Ana, CA 92705

LINE I/F MASTER		7/6/99
File:	6325_L1	5:05:22 PM
Rev No.	B	Sheet 10 of 17
Drawn by:	S. GALUS	
Checked by:		
Drawing Number:	CIS6325	





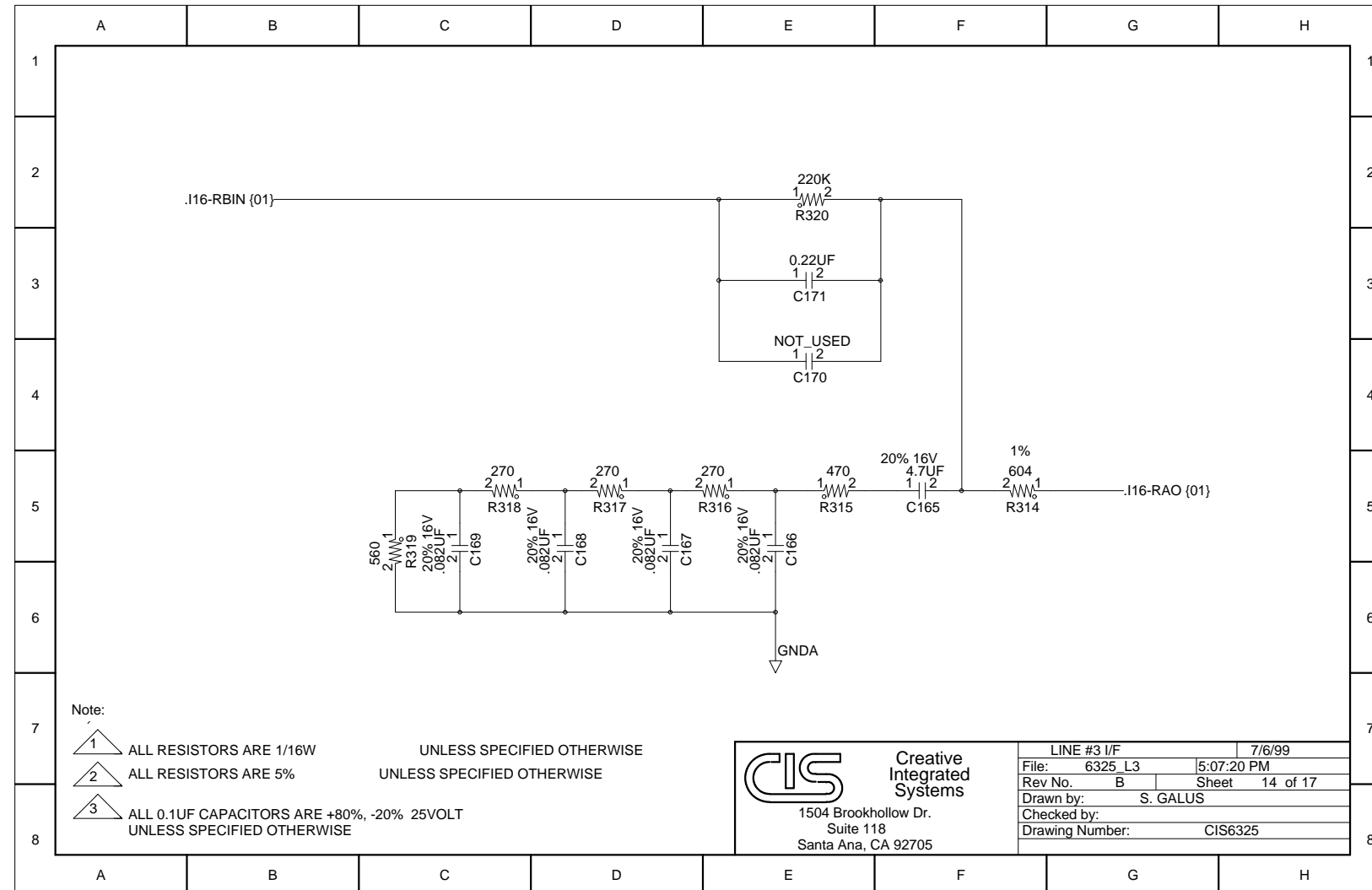
Note:

- 1 ALL RESISTORS ARE 1/16W UNLESS SPECIFIED OTHERWISE
- 2 ALL RESISTORS ARE 5% UNLESS SPECIFIED OTHERWISE
- 3 ALL 0.1UF CAPACITORS ARE +80%, -20% 25VOLT UNLESS SPECIFIED OTHERWISE

**CIS** Creative Integrated Systems  
 1504 Brookhollow Dr.  
 Suite 118  
 Santa Ana, CA 92705

LINE #2 I/F	7/6/99
File: 6325 L2	5:05:54 PM
Rev No. B	Sheet 12 of 17
Drawn by: S. GALUS	
Checked by:	
Drawing Number: CIS6325	





Note:

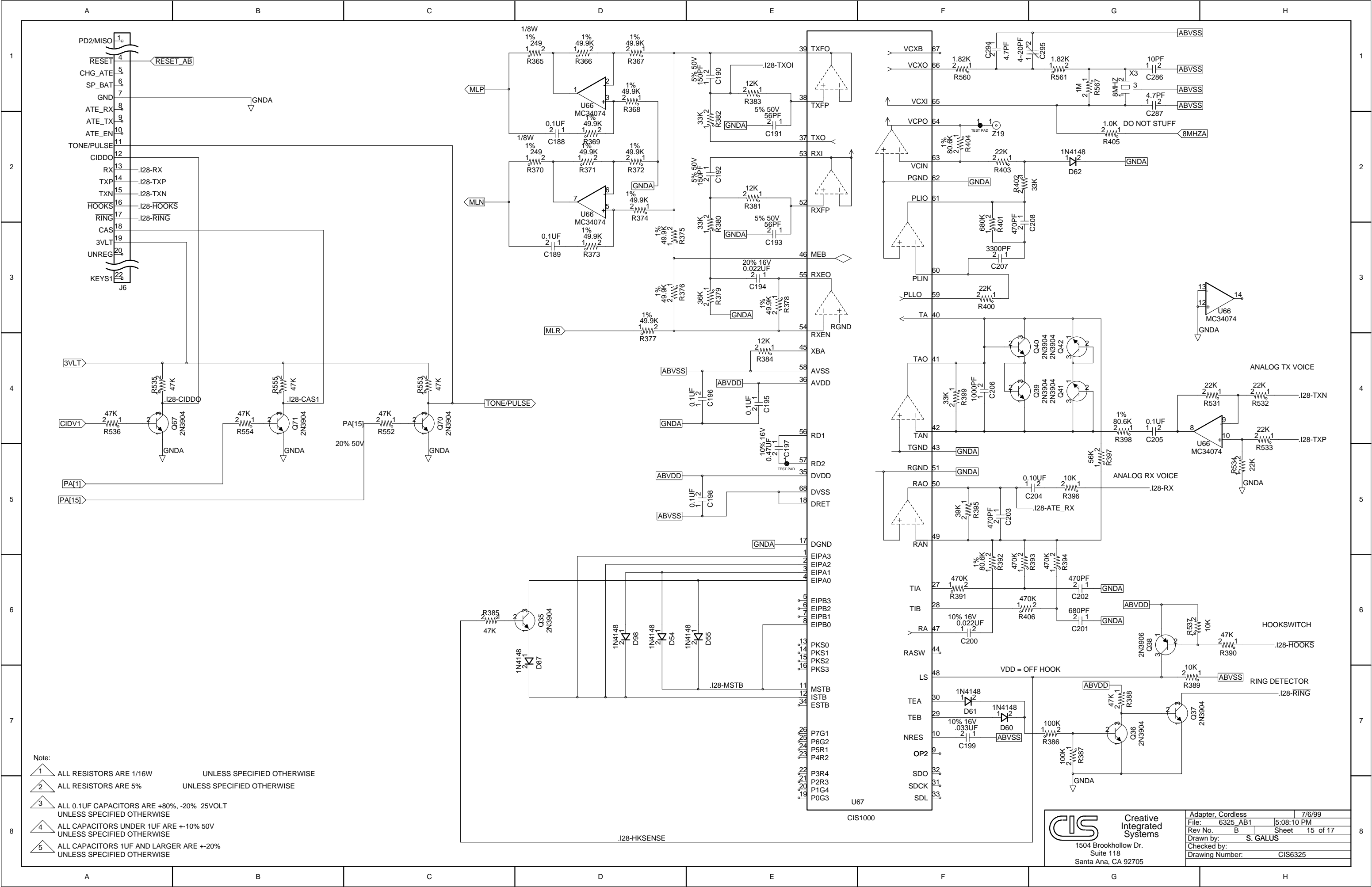
- 1 ALL RESISTORS ARE 1/16W UNLESS SPECIFIED OTHERWISE
- 2 ALL RESISTORS ARE 5% UNLESS SPECIFIED OTHERWISE
- 3 ALL 0.1UF CAPACITORS ARE +80%, -20% 25VOLT UNLESS SPECIFIED OTHERWISE



Creative Integrated Systems

1504 Brookhollow Dr.  
Suite 118  
Santa Ana, CA 92705

LINE #3 I/F	7/6/99
File: 6325_L3	5:07:20 PM
Rev No. B	Sheet 14 of 17
Drawn by: S. GALUS	
Checked by:	
Drawing Number: CIS6325	

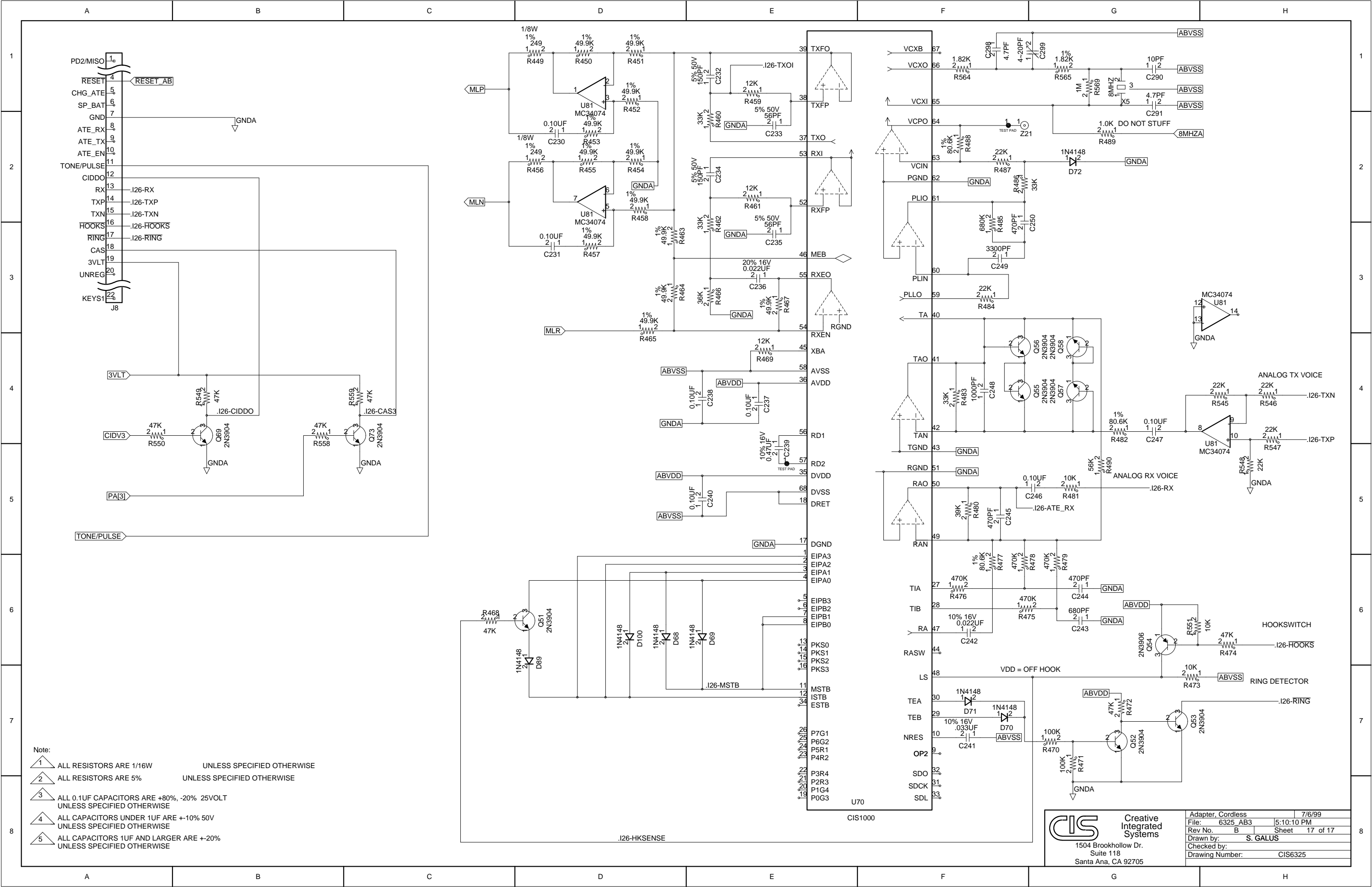


- Note:
- 1 ALL RESISTORS ARE 1/16W UNLESS SPECIFIED OTHERWISE
  - 2 ALL RESISTORS ARE 5% UNLESS SPECIFIED OTHERWISE
  - 3 ALL 0.1UF CAPACITORS ARE +80%, -20% 25VOLT UNLESS SPECIFIED OTHERWISE
  - 4 ALL CAPACITORS UNDER 1UF ARE +-10% 50V UNLESS SPECIFIED OTHERWISE
  - 5 ALL CAPACITORS 1UF AND LARGER ARE +-20% UNLESS SPECIFIED OTHERWISE

 <b>Creative Integrated Systems</b> 1504 Brookhollow Dr. Suite 118 Santa Ana, CA 92705	Adapter, Cordless	7/6/99
	File: 6325_AB1	5:08:10 PM
	Rev No. B	Sheet 15 of 17
	Drawn by: S. GALUS	
	Checked by:	
Drawing Number: CIS6325		







Note:

1 ALL RESISTORS ARE 1/16W UNLESS SPECIFIED OTHERWISE

2 ALL RESISTORS ARE 5% UNLESS SPECIFIED OTHERWISE

3 ALL 0.1UF CAPACITORS ARE +80%, -20% 25VOLT UNLESS SPECIFIED OTHERWISE

4 ALL CAPACITORS UNDER 1UF ARE +-10% 50V UNLESS SPECIFIED OTHERWISE

5 ALL CAPACITORS 1UF AND LARGER ARE +-20% UNLESS SPECIFIED OTHERWISE

 <b>CIS</b> Creative Integrated Systems 1504 Brookhollow Dr. Suite 118 Santa Ana, CA 92705	Adapter, Cordless	7/6/99
	File: 6325_AB3	5:10:10 PM
	Rev No. B	Sheet 17 of 17
	Drawn by: S. GALUS	
	Checked by:	
Drawing Number:	CIS6325	