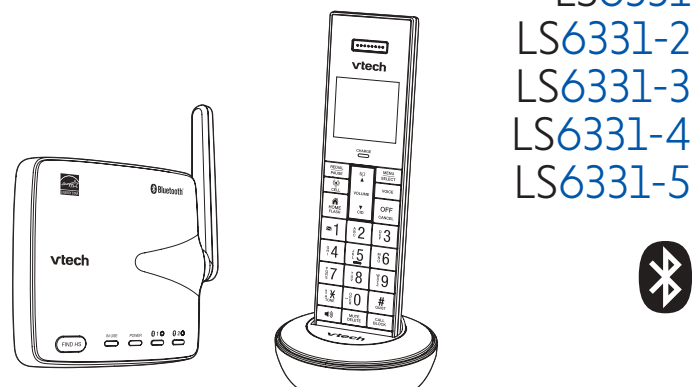


Go to [www.vtechphones.com](http://www.vtechphones.com) (US) to register your product for enhanced warranty support and latest VTech product news.

Go to [phones.vtechcanada.com](http://phones.vtechcanada.com) (CA) for latest VTech product news.



LS6331  
LS6331-2  
LS6331-3  
LS6331-4  
LS6331-5



**vtech**  
Abridged user's manual

Scan the QR code for support information



## IMPORTANT SAFETY INSTRUCTIONS

- When using your telephone equipment, basic safety precautions should always be followed to reduce the risk of fire, electric shock and injury, including the following:
  - Read and understand all instructions.
  - Follow all warnings and instructions marked on the product.
  - Use only with UL listed Bluetooth devices.
  - Unplug this product from the wall outlet before cleaning. Do not use liquid or aerosol cleaners. Use a damp cloth for cleaning.
  - CAUTION:** Do not install the telephone base at a height above 2 meters.
  - Do not use this product near water such as near a bath tub, wash bowl, kitchen sink, laundry tub or a swimming pool, or in a wet basement or shower.
  - Do not place this product on an unstable table, shelf, stand or other unstable surfaces.
  - Avoid placing the telephone system in places with extreme temperature, direct sunlight, or other electrical devices. Protect your phone from moisture, dust, corrosive liquids and fumes.
  - Slots and openings in the back or bottom of the telephone base and handset are provided for ventilation. To protect them from overheating, these openings must not be blocked by placing the product on a soft surface such as a bed, sofa or rug. This product should never be placed near or over a radiator or heat register. This product should not be placed in any area where proper ventilation is not provided.
  - This product should be operated only from the type of power source indicated on the marking label. If you are not sure of the type of power supply in your home or office, consult your dealer or local power company.
  - Do not allow anything to rest on the power cord. Do not install this product where the cord may be walked on.
  - Never push objects of any kind into this product through the slots in the telephone base or handset because they may touch dangerous voltage points or create a short circuit. Never spill liquid of any kind on the product.
  - To reduce the risk of electric shock, do not disassemble this product, but take it to an authorized service facility. Opening or removing parts of the telephone base or handset other than specified access doors may expose you to dangerous voltages or other risks. Incorrect reassembly can cause electric shock when the product is subsequently used.
  - Do not overload wall outlets and extension cords.
  - Unplug this product from the wall outlet and refer servicing to an authorized service facility under the following conditions:
    - When the power supply cord or plug is damaged or frayed.
    - If liquid has been spilled onto the product.
    - If the product has been exposed to rain or water.
    - If the product does not operate normally by following the operating instructions. Adjust only those controls that are covered by the operation instructions. Improper adjustment of other controls may result in damage and often requires extensive work by an authorized technician to restore the product to normal operation.
    - If the product has been dropped and the telephone base and/or handset has been damaged.

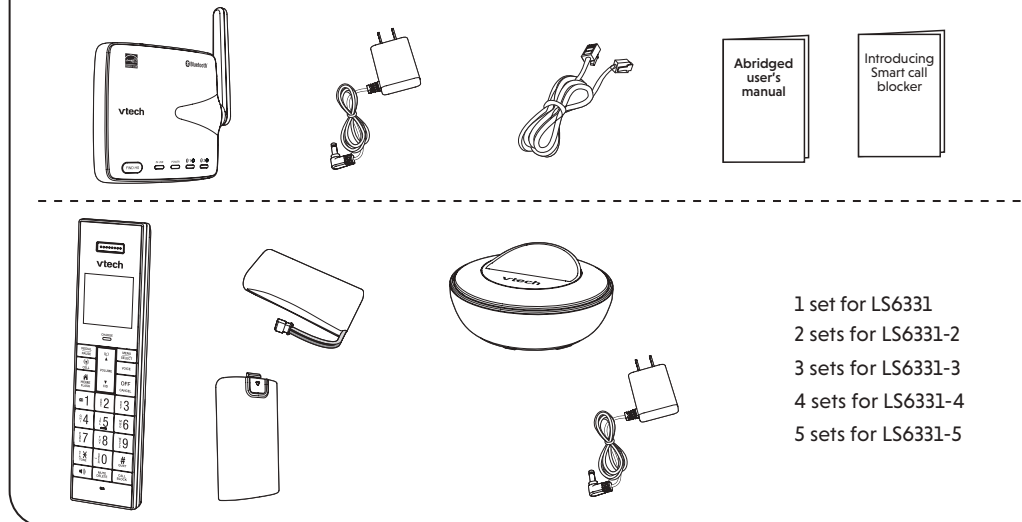
- If the product exhibits a distinct change in performance.
- Avoid using a telephone (other than cordless) during an electrical storm. There is a remote risk of electric shock from lightning.
- Do not use the telephone to report a gas leak in the vicinity of the leak. Under certain circumstances, a spark may be created when the adapter is plugged into the power outlet, or when the handset is replaced in its cradle. This is a common event associated with the closing of any electrical circuit. The user should not plug the phone into a power outlet, and should not put a charged handset into the cradle, if the phone is located in an environment containing concentrations of flammable or flame-supporting gases, unless there is adequate ventilation. A spark in such an environment could create a fire or explosion. Such environments might include: medical use of oxygen without adequate ventilation; industrial gases (cleaning solvents; gasoline vapors; etc.); a leak of natural gas; etc.
- Only put the handset of your telephone next to your ear when it is in normal talk mode.
- The power adapter is intended to be correctly oriented in a vertical or floor mount position. The prongs are not designed to hold the plug in place if it is plugged into a ceiling, under-the-table or cabinet outlet.
- For pluggable equipment, the socket-outlet shall be installed near the equipment and shall be easily accessible.
- CAUTION:** Use only the batteries indicated in this manual. There may be a risk of explosion if a wrong type of battery is used for the handset. Use only the supplied rechargeable batteries or replacement batteries (BT162342/BT262342) for the handset. Do not dispose of batteries in a fire. They may explode. Disposed of used batteries according to the instruction.
  - Do not use the battery in following conditions:
    - High or low extreme temperature during use, storage or transportation.
    - Replacement of a battery with an incorrect type that can defeat a safeguard.
    - Disposal of a battery into fire or a hot oven, or mechanically crushing or cutting of a battery, that can result in an explosion.
    - Leaving a battery in an extremely high temperature surrounding environment that can result in an explosion or the leakage of flammable liquid or gas.
    - A battery subjected to extremely low air pressure that can result in an explosion or the leakage of flammable liquid or gas.
  - Use only the adapter included with this product. Incorrect adapter polarity or voltage can seriously damage the product.
  - The applied nameplate is located at the bottom or rear of the product.

### SAVE THESE INSTRUCTIONS

- Battery**
- Use only the battery provided or equivalent. To order a replacement, visit our website at [www.vtechphones.com](http://www.vtechphones.com) or call 1 (800) 595-9511. In Canada, go to [phones.vtechcanada.com](http://phones.vtechcanada.com) or call 1 (800) 267-7377.
  - Do not dispose of the battery in a fire. Check with local waste management codes for special disposal instructions.

## WHAT'S IN THE BOX

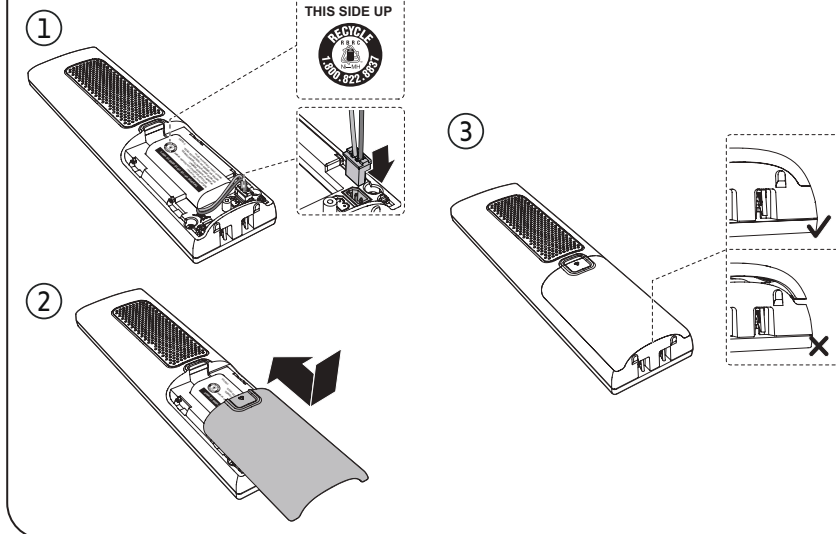
Your telephone package contains the following items. Save your sales receipt and original packaging in case it is necessary to ship your telephone for warranty service.



- 1 set for LS6331
- 2 sets for LS6331-2
- 3 sets for LS6331-3
- 4 sets for LS6331-4
- 5 sets for LS6331-5

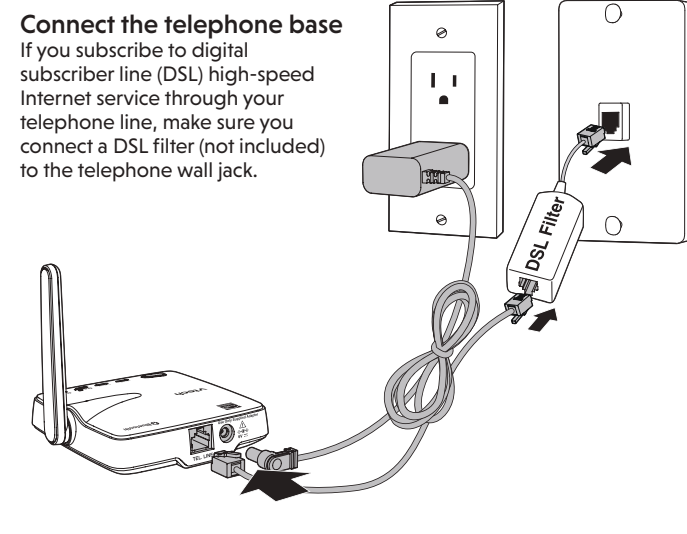
## INSTALL AND CONNECT

### Install the battery

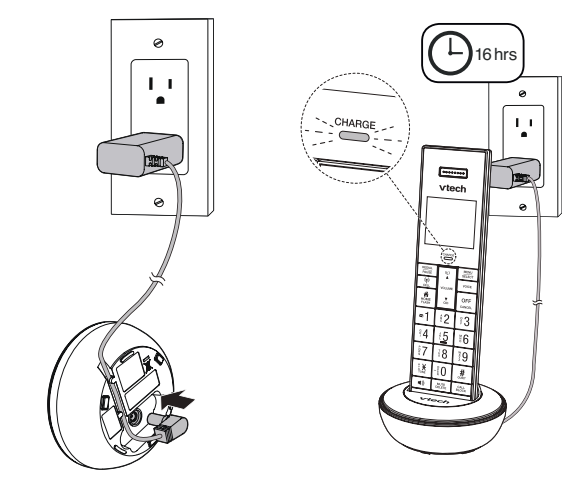


### Connect and charge

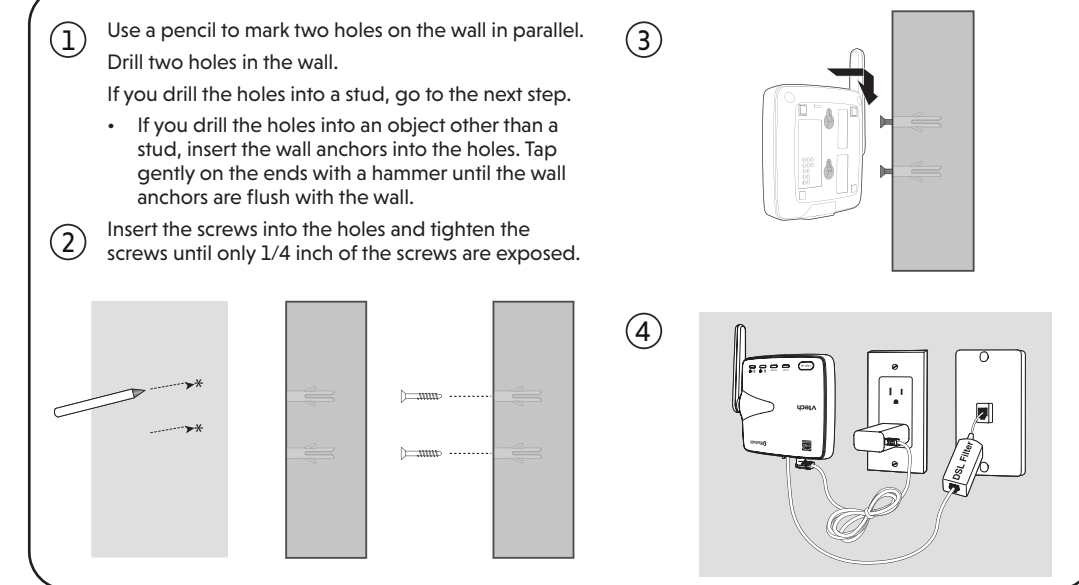
**Connect the telephone base**  
If you subscribe to digital subscriber line (DSL) high-speed Internet service through your telephone line, make sure you connect a DSL filter (not included) to the telephone wall jack.



### Connect the charger and charge the battery



## MOUNT (OPTIONAL)



## IMPORTANT SAFETY INSTRUCTIONS

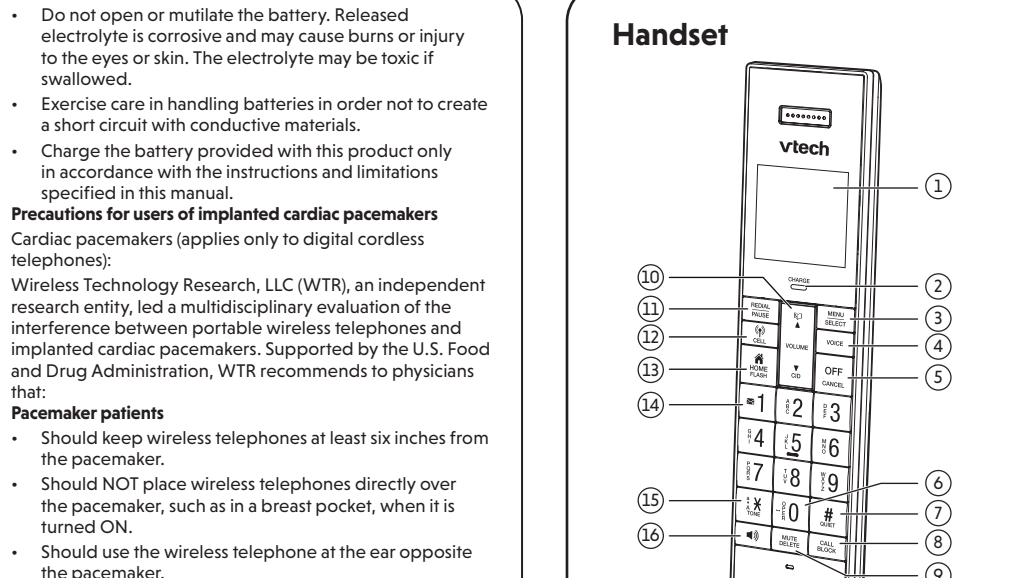
- When using your telephone equipment, basic safety precautions should always be followed to reduce the risk of fire, electric shock and injury, including the following:
  - Read and understand all instructions.
  - Follow all warnings and instructions marked on the product.
  - Use only with UL listed Bluetooth devices.
  - Unplug this product from the wall outlet before cleaning. Do not use liquid or aerosol cleaners. Use a damp cloth for cleaning.
  - CAUTION:** Do not install the telephone base at a height above 2 meters.
  - Do not use this product near water such as near a bath tub, wash bowl, kitchen sink, laundry tub or a swimming pool, or in a wet basement or shower.
  - Do not place this product on an unstable table, shelf, stand or other unstable surfaces.
  - Avoid placing the telephone system in places with extreme temperature, direct sunlight, or other electrical devices. Protect your phone from moisture, dust, corrosive liquids and fumes.
  - Slots and openings in the back or bottom of the telephone base and handset are provided for ventilation. To protect them from overheating, these openings must not be blocked by placing the product on a soft surface such as a bed, sofa or rug. This product should never be placed near or over a radiator or heat register. This product should not be placed in any area where proper ventilation is not provided.
  - This product should be operated only from the type of power source indicated on the marking label. If you are not sure of the type of power supply in your home or office, consult your dealer or local power company.
  - Do not allow anything to rest on the power cord. Do not install this product where the cord may be walked on.
  - Never push objects of any kind into this product through the slots in the telephone base or handset because they may touch dangerous voltage points or create a short circuit. Never spill liquid of any kind on the product.
  - To reduce the risk of electric shock, do not disassemble this product, but take it to an authorized service facility. Opening or removing parts of the telephone base or handset other than specified access doors may expose you to dangerous voltages or other risks. Incorrect reassembly can cause electric shock when the product is subsequently used.
  - Do not overload wall outlets and extension cords.
  - Unplug this product from the wall outlet and refer servicing to an authorized service facility under the following conditions:
    - When the power supply cord or plug is damaged or frayed.
    - If liquid has been spilled onto the product.
    - If the product has been exposed to rain or water.
    - If the product does not operate normally by following the operating instructions. Adjust only those controls that are covered by the operation instructions. Improper adjustment of other controls may result in damage and often requires extensive work by an authorized technician to restore the product to normal operation.
    - If the product has been dropped and the telephone base and/or handset has been damaged.

- If the product exhibits a distinct change in performance.
- Avoid using a telephone (other than cordless) during an electrical storm. There is a remote risk of electric shock from lightning.
- Do not use the telephone to report a gas leak in the vicinity of the leak. Under certain circumstances, a spark may be created when the adapter is plugged into the power outlet, or when the handset is replaced in its cradle. This is a common event associated with the closing of any electrical circuit. The user should not plug the phone into a power outlet, and should not put a charged handset into the cradle, if the phone is located in an environment containing concentrations of flammable or flame-supporting gases, unless there is adequate ventilation. A spark in such an environment could create a fire or explosion. Such environments might include: medical use of oxygen without adequate ventilation; industrial gases (cleaning solvents; gasoline vapors; etc.); a leak of natural gas; etc.
- Only put the handset of your telephone next to your ear when it is in normal talk mode.
- The power adapter is intended to be correctly oriented in a vertical or floor mount position. The prongs are not designed to hold the plug in place if it is plugged into a ceiling, under-the-table or cabinet outlet.
- For pluggable equipment, the socket-outlet shall be installed near the equipment and shall be easily accessible.
- CAUTION:** Use only the batteries indicated in this manual. There may be a risk of explosion if a wrong type of battery is used for the handset. Use only the supplied rechargeable batteries or replacement batteries (BT162342/BT262342) for the handset. Do not dispose of batteries in a fire. They may explode. Disposed of used batteries according to the instruction.
  - Do not use the battery in following conditions:
    - High or low extreme temperature during use, storage or transportation.
    - Replacement of a battery with an incorrect type that can defeat a safeguard.
    - Disposal of a battery into fire or a hot oven, or mechanically crushing or cutting of a battery, that can result in an explosion.
    - Leaving a battery in an extremely high temperature surrounding environment that can result in an explosion or the leakage of flammable liquid or gas.
    - A battery subjected to extremely low air pressure that can result in an explosion or the leakage of flammable liquid or gas.
  - Use only the adapter included with this product. Incorrect adapter polarity or voltage can seriously damage the product.
  - The applied nameplate is located at the bottom or rear of the product.

### SAVE THESE INSTRUCTIONS

- Battery**
- Use only the battery provided or equivalent. To order a replacement, visit our website at [www.vtechphones.com](http://www.vtechphones.com) or call 1 (800) 595-9511. In Canada, go to [phones.vtechcanada.com](http://phones.vtechcanada.com) or call 1 (800) 267-7377.
  - Do not dispose of the battery in a fire. Check with local waste management codes for special disposal instructions.

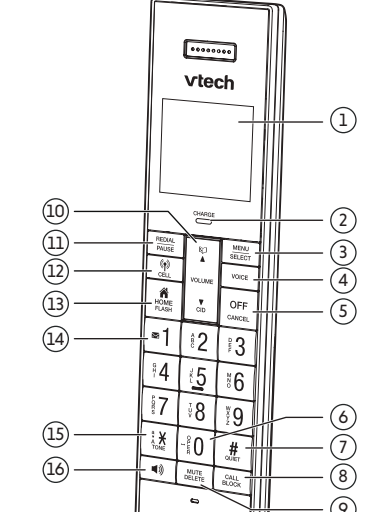
## WHAT'S IN THE BOX



- 1 set for LS6331
- 2 sets for LS6331-2
- 3 sets for LS6331-3
- 4 sets for LS6331-4
- 5 sets for LS6331-5

## OVERVIEW

### Handset



- LCD display
- CHARGE light
- MENU/SELECT
  - Display the menu.
  - Select an item or save an entry or setting while in the menu.
- VOICE
  - Activate the voice-controlled application of one of the connected devices when the system is in idle. If there is no paired device, then the handset will prompt **Pair cell first** to remind you to remote voice control activation.
- OFF/CANCEL
  - Hang up a call.
  - Return to the previous menu or idle mode without making changes.
  - Delete digits while predialing.
  - Silence the handset ringer temporarily while the phone is ringing.
  - Press and hold to erase the missed call indicator while the handset is not in use.
- OPER O
  - Enter space character during text editing.
- QUIET #
  - Press and hold to set and turn on the QUIET mode, or turn it off.
  - When reviewing a caller ID log entry, press repeatedly to view other dialing options.

- CALL BLOCK**
  - Block the incoming call when the telephone is ringing.
  - When on a call, press to block the call.
  - Show the Smart call blocker menu when idle.

- MUTE/DELETE**
  - Mute the microphone during a call.
  - Mute the ringer temporarily when the handset is ringing.
  - Delete an individual entry while reviewing the caller ID log, the phonebook or the redial memory.
  - Delete digits while predialing.
  - Delete the playing message or the recorded announcement during message or announcement playback.

- Show phonebook entries.

- Review the caller ID log.

- VOLUME**
- Move the cursor to the left or right while entering names or numbers.
  - Increase or decrease the listening volume when on a call, or increase or decrease the message playback volume.

- REDIAL/PAUSE**
  - Review the redial list.
  - Insert a dialing pause while dialing or entering numbers into the phonebook.

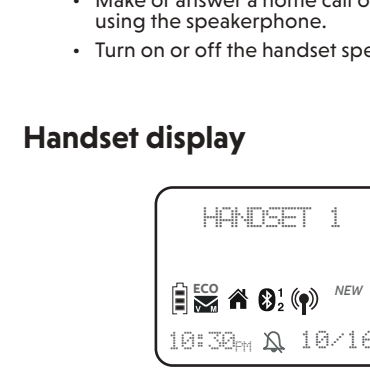
- CELL**
  - Make or answer a cell call.
  - Answer an incoming home call when you hear a call waiting alert during a cell call.
  - Call back the caller if the caller's number is available while reviewing caller ID log.

- HOME/FLASH**
  - Make or answer a home call.
  - Answer an incoming home call when you hear a call waiting alert.
  - Call back the caller if the caller's number is available while reviewing caller ID log.

- 1**
  - While reviewing a caller ID log entry, press repeatedly to add or remove 1 in front of the telephone number before dialing or saving it in the phonebook.
  - Press and hold to set or dial your voicemail number.

- TONE X / a + A**
  - Switch to tone dialing temporarily during a call if you have pulse service.
  - Change the next letter to upper or lower case while entering names.

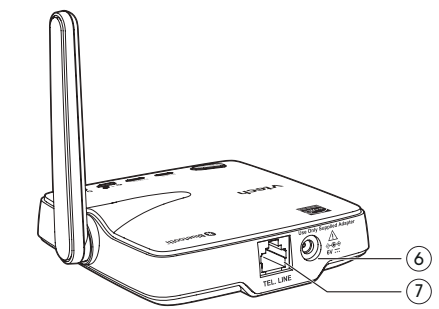
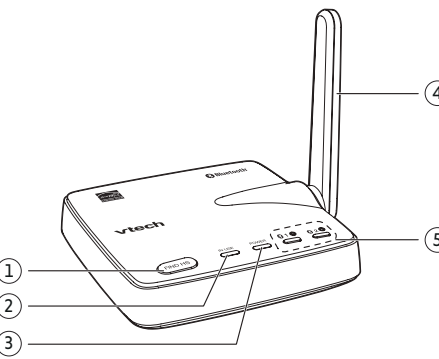
### Handset display



	The handset battery is low and needs charging.
	The handset battery is charging.
	The handset battery is fully charged.
	Handset ringer is off.
	New voicemail received from your telephone service provider.
	The entry you are reviewing is new in the caller ID log.
	Displays when Home line is in use.
	Bluetooth device is paired and active.
	Bluetooth device / Cell line is in use.
	The ECO mode activates automatically to reduce power consumption when the handset is within range of the telephone base.

### Telephone base

- FIND HS**
  - Page all system handsets.
- IN USE light**
  - On when the handset is in use, or when the telephone base is registering a handset.
  - Flashes when there is an incoming call, or another telephone sharing the same line is in use.
  - Flashes slowly when the telephone base is deregistering all handsets.



strength and your cell phone can connect to the Internet.

- Try to activate the voice app on your cell phone to ensure it is in place.

### To activate remote voice control on handset:

- Press **VOICE** on the handset.
  - If you have connected one cell phone to the telephone, the handset shows the device name of the connected cell phone directly.
  - If you have connected two cell phones to the telephone, the handset shows **Select a device**, followed by the device name list of the connected cell phones. Scroll to choose the desired cell phone, and then press **SELECT**.
- The handset then shows the remote voice control icon (📞).
  - If the activation fails, the handset displays **Not available**. When the screen returns to idle, try Step 1 again.
- When the handset plays the confirmation tone as forwarded by the cell phone's voice app, start speaking toward the handset, and then wait for feedback. Make reply to the voice app's feedback, if necessary.
  - You can press **📞** on the handset to turn off the speakerphone and listen to the feedback through the handset earpiece.
- To end the current remote voice control session, press **OFF/CANCEL** on the handset. You can restart by following Steps 1-3 mentioned above.

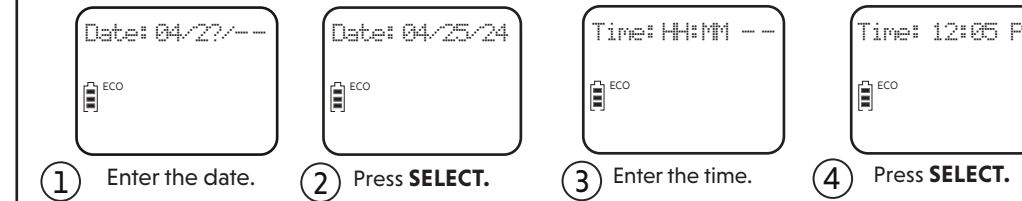
## SETUP

After you install your telephone or power returns following a power outage and battery depletion, the handset will prompt you to set the date and time, and to configure the Smart call blocker through voice guide.

### Date and time

Follow the steps below to set the date and time. For example, if the date is 25 April, 2024, and the time is 12:05 PM.

### When the handset prompts you to set the date and time:



### NOTES:

To skip the date and time setting, press **OFF/CANCEL**. If you have skipped the prompt, you can set up again by pressing **MENU**. Scroll to select **Set date/time**, and then press **SELECT**. Then, follow the steps above.

### Voice guide for Smart call blocker

After you have set or skipped setting the date and time, the handset will prompt if you want to set Smart call blocker. For more details, see **Use voice guide to set Smart call blocker** in the Complete user's manual.

### When the handset prompts you to set up the Smart call blocker via voice guide:

- Press **MENU** on the handset to start voice guide setup.
- The handset prompts, "*Hello! This voice guide will assist you with the basic setup of Smart call blocker*".
- Input the designated option numbers as instructed in the voice guide.
  - To skip the voice guide, press **OFF/CANCEL**.

### Change LCD language setting

You can select English, French, or Spanish to be used in all screen displays:

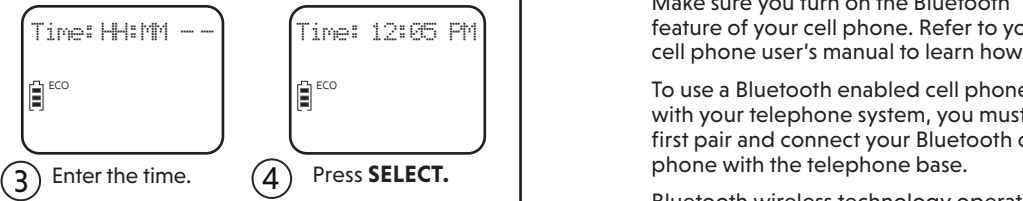
- Press **MENU** when the handset is not in use.
- Press **▼** or **▲** to scroll to **Settings** and then press **SELECT**.

After you install your telephone or power returns following a power outage and battery depletion, the handset will prompt you to set the date and time, and to configure the Smart call blocker through voice guide.

### Date and time

Follow the steps below to set the date and time. For example, if the date is 25 April, 2024, and the time is 12:05 PM.

### When the handset prompts you to set the date and time:



### NOTES:

To skip the date and time setting, press **OFF/CANCEL**. If you have skipped the prompt, you can set up again by pressing **MENU**. Scroll to select **Set date/time**, and then press **SELECT**. Then, follow the steps above.

### Voice guide for Smart call blocker

After you have set or skipped setting the date and time, the handset will prompt if you want to set Smart call blocker. For more details, see **Use voice guide to set Smart call blocker** in the Complete user's manual.

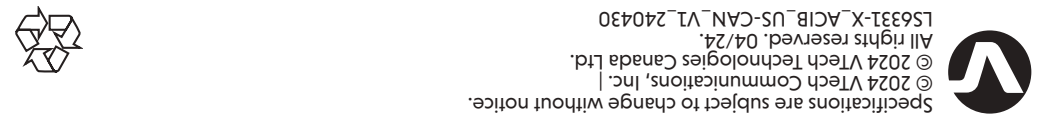
### When the handset prompts you to set up the Smart call blocker via voice guide:

- Press **MENU** on the handset to start voice guide setup.
- The handset prompts, "*Hello! This voice guide will assist you with the basic setup of Smart call blocker*".
- Input the designated option numbers as instructed in the voice guide.
  - To skip the voice guide, press **OFF/CANCEL**.

### Change LCD language setting

You can select English, French, or Spanish to be used in all screen displays:

- Press **MENU** when the handset is not in use.
- Press **▼** or **▲** to scroll to **Settings** and then press **SELECT**.



Specifications are subject to change without notice.

© 2024 Vtech Communications, Inc. |  
© 2024 Vtech Technologies Canada Ltd.  
All rights reserved. 04/24  
LS6331-X-AC1B-US-CAN\_V1\_240430

Go to [www.vtechphones.com](http://www.vtechphones.com) (US) to register your product for enhanced warranty support and latest VTech product news.

Go to [phones.vtechcanada.com](http://phones.vtechcanada.com) (Canada) for the latest VTech product news.

## VTech Connect to Cell™ application

This application helps you integrate your Android phones with your **LS6331**. For more information and application download, scan the QR code on the app, or go to [www.vtechphones.com/vtech\\_connect\\_to\\_cell](http://www.vtechphones.com/vtech_connect_to_cell).



## Download contacts from your Bluetooth cell phone

- Press **MENU** when the handset is not in use.
- Press **▼** or **▲** to scroll to **Bluetooth**, then press **SELECT**.
- Press **▼** or **▲** to scroll to **Download PB**, then press **SELECT**.
- Scroll to select the desired cell phone, and then press **SELECT**.

### NOTES:

For certain cell phones, you may need to press a key on your cell phone to confirm the phonebook download.

Certain cell phones do not support SIM card download. If this is the case, transfer the contacts from your SIM card to your cell phone memory first. Then download from your cell phone memory. For more information on how to transfer contacts from your SIM card to your cell phone memory, see the user's manual of your cell phone.

The telephone system will remove any duplicate entries, and any entries that contain unrecognizable symbols; therefore, the number of entries downloaded from your cell phone phonebook may be less than the number of entries stored in your cell phone.

## Review the device list

Up to two devices can be paired to the telephone base. All paired devices are shown on the device list. To use a paired device, it must be connected and in an active slot (1 or 2) on the device list. Only one active device can be on a call at a time.

- Press **MENU** when the handset is not in use.
- Press **▼** or **▲** to scroll to **Bluetooth**, then press **SELECT**.
- Press **SELECT** again to choose **Device list**.

## REMOTE VOICE CONTROL

When a device (1 or 2) is displayed on the handset screen, press **DELETE** will remove the device.

### Auto connection

When an active device moves within Bluetooth range of the telephone base, or is turned on within range, the telephone base tries to connect to the device.

- A connected device could also be disconnected by:
- Turning off the Bluetooth device.
  - Turning off the Bluetooth feature of the device.
  - The Bluetooth device is not within range of the telephone base.

### Connect a paired device

If you need to connect your paired cell phone to the telephone base manually:

- Press **1** or **2** on the telephone base when it is not in use, and its light flashes.
- When the cell phone is connected to the telephone base, the corresponding status icon (1 or 2) displays on the handset screen. The corresponding device light (1 or 2) turns on.

## BLUETOOTH®

**NOTES:**  
Your **LS6331/LS6331-2/LS6331-3/LS6331-4/LS6331-5** is compatible with Bluetooth version 2.0 or above devices.

You can pair and connect up to two Bluetooth cell phones.

Before you begin, make sure that you have cellular coverage and your Bluetooth enabled cell phone is not connected to any other Bluetooth device.

Make sure you turn on the Bluetooth feature of your cell phone. Refer to your cell phone user's manual to learn how.

To use a Bluetooth enabled cell phone with your telephone system, you must first pair and connect your Bluetooth cell phone with the telephone base.

Bluetooth wireless technology operates within a short range (a maximum of approximately 15 feet). When you pair a Bluetooth cell phone to the telephone base, place your Bluetooth cell phone closer to the telephone base to maintain sufficient signal strength.

If you have trouble pairing your Bluetooth cell phone to the telephone base, try turning off the Bluetooth feature of the nearby devices that your cell phone has previously paired.

For more details about the Bluetooth feature, read the online Complete user's manual.

### Pair and connect your Bluetooth enabled cell phone

- Choose a slot to pair the cell phone. Press and hold **1** or **2** on the telephone base for about 4 seconds until the **1** or **2** light flashes.
  - If there is already a cell phone paired to the slot, the existing cell phone will be erased from the cell devices list.
- Turn on the Bluetooth feature of your cell phone and search for or add new devices. Once your cell phone finds your VTech phone (**VTECH DECT 6.0**), press the appropriate key on your cell phone to continue the pairing process.
  - All cell phones that are connected to the telephone base are disconnected temporarily until the pairing process is complete.

When a device is successfully paired and connected, the corresponding status icon (1 or 2) displays on the handset. The corresponding device light on the telephone base (1 or 2) turns on.

During the remote voice control activation, if your Android cell phone comes with both a dedicated voice app and Google Now, it may prompt you to select which voice app to use, and whether to use it for just once or always. Select the desired options. If you do not respond to your cell phone's prompt in time, the handset screen will return to idle, and the 📞 icon will disappear. You can restart by following Steps 1-3 mentioned above.

If you receive a landline or cell line incoming call when you have activated remote voice control on a connected cell phone, the remote voice control operation will be ended.



## TELEPHONE OPERATIONS

<span></span>	<span></span>	<span></span>	<span></span>	<span></span>	<span></span>
MENU PAUSE	ESC	▲	▼	MENU SELECT	
CELL	VOLUME			OFF CANCEL	
HOME FLASH	END				
1	2			3	
4	5			6	
7	8			9	
✕ TONE	0			#	QUIET
	MUTE DELETE			CALL BLOCK	

- Press **MENU** when the phone is not in use.
- Press **▼** or **▲** until the screen displays the desired feature menu.
- Press **SELECT**.

- To return to the previous menu, press **OFF/CANCEL**.
- To exit completely, **press and hold OFF/CANCEL**.

### Make a home call

- Press 🏠**HOME/FLASH** or 📞, and then dial the telephone number.

- OR** -
- Enter the telephone number on the handset, and then press 🏠**HOME/FLASH** or 📞 to dial.

### Make a cell call

- Press 📞**CELL** on the handset. The handset displays **Select a device**.
    - If you have only one cell phone connected to the telephone base, press **SELECT** to select the only device.
    - If you have two cell phones connected to the telephone, press **▼** or **▲** to select a cell phone and then press **SELECT**.
  - Enter the telephone number, then press 📞**CELL** dial.
- OR** -
  - Enter the telephone number.
  - Press 📞**CELL** to dial.
    - If you have only one cell phone connected to the telephone base, it is automatically selected to make cell calls.

### Quiet mode

You can turn on the quiet mode for a period of time. During this period, all tones (except paging tone) and call screening are muted.

- Press and hold QUIET #** on the handset when it is not in use.
- Use the dialing keys (**0-9**) to enter the duration, and then press **SELECT** to save.
- To turn off the **quiet mode**, **press and hold QUIET #** on the handset when it is not in use.

## RETRIEVE VOICEMAIL FROM TELEPHONE SERVICE

Voicemail is a feature available from most telephone service providers. It may be included with your telephone service, or may be optional. Fees may apply.

### Retrieve voicemail

If you subscribe to a voicemail service offered by your telephone service provider, the handset displays ☎ and **New voicemail** when you received a voicemail. To retrieve, you typically dial an access number provided by your telephone service provider, and then enter a security code. Contact your telephone service provider for instructions on how to configure the voicemail settings and listen to messages.

- NOTE:** After you have listened to all new voicemail messages, the indicators on the handset turn off automatically.

**NOTE:** After you have listened to all new voicemail messages, the indicators on the handset turn off automatically.

### Set speed dial voicemail number

You can save the voicemail number to ☎ on each handset for easy access. When you want to retrieve voicemail messages, **press and hold 1**. Contact your telephone service provider for more information and assistance about your voicemail service.

- Press **MENU** when the handset is not in use.
- Press **▼** or **▲** to scroll to **Settings** and then press **SELECT**.
- Scroll to choose **Voicemail #**, then press **SELECT**.
- Use the dialing keys to enter the voicemail number (up to 30 digits), then press **SELECT**.

### Clear the new voicemail indicators

If you have retrieved your voicemail away from home, and the handset still displays the new voicemail indicators, use this feature to clear the indicators.

- NOTE:** This feature clears the indicators only, it does not delete your voicemail messages.

- Press **MENU** when the phone is not in use.
- Press **▼** or **▲** to scroll to **Settings** and then press **SELECT**.
- Scroll to **Clr voicemail** and then press **SELECT** twice.

- If you have two cell phones connected to the telephone base, the handset displays **Select a device**. Press **▼** or **▲** to select a cell phone and then press **SELECT**.

### Answer a home/cell call

- Press 🏠**HOME/FLASH**, 📞**CELL**, 📞 or any dialing keys.

### End a home/cell call

- Press **OFF/CANCEL** or put the handset back in the charger.

### Speakerphone

- During a call, press 📞 on the handset to switch between speakerphone and handset earpiece.

### Volume

- During a call, press **VOLUME ▲** and **VOLUME ▼** to adjust the listening volume.

### Mute

The mute function allows you to hear the other party but the other party cannot hear you.

- During a call, press **MUTE/DELETE**. The handset displays **Muted**.
- Press **MUTE/DELETE** again to resume the conversation. The handset displays **Microphone on** briefly.

### Join a call in progress

You can use up to two handsets at a time on an outside call.

- When a handset is already on a call, press 🏠**HOME/FLASH** or 📞 on another handset to join the call.
- To exit the call, press **OFF/CANCEL** on the handset or place it in the telephone base or charger. The call continues until all handsets hang up.
- To exit the call, press **OFF/CANCEL** on the handset or place it in the telephone base or charger. The call continues until all handsets hang up.

### Call waiting

When you subscribe to call waiting service from your telephone service provider, you hear an alert tone if there is an incoming call while you are already on a call.

- Press 🏠**HOME/FLASH** to put the current call on hold and take the new call.
- Press 🏠**HOME/FLASH** at any time to switch back and forth between calls.

### Call waiting on the cell line:

- Press 📞**CELL** to put the current call on hold and take the new call.

- Press 📞**CELL** at any time to switch back and forth between calls.

### Answer an incoming cell call while on a home call

If you are on a home call and you receive an incoming cell call, you hear a beep and 📞 displays on the handset. All other handsets ring.

- To answer the incoming cell call, Press 📞**CELL**. The home call is automatically placed on hold.
- To end the cell call, press **OFF/CANCEL**. The home line is still on hold.
- To resume the home call on hold, press 🏠**HOME/FLASH**.

### Answer an incoming home call while on a cell call

If you are on a cell call and you receive an incoming home call, you hear a beep and 🏠 displays on the handset. All other handsets ring.

- To answer the incoming home call, Press 🏠**HOME/FLASH**. The cell call is automatically placed on hold.
- To end the home call, press **OFF/CANCEL**. The cell line is still on hold.
- To resume the cell call on hold, press 📞**CELL**.

### Find handset

Use this feature to find the system handset.

### To start paging:

- Press **FIND HS** on the telephone base when not in use. All idle handsets ring and display **Paging**.

### To end paging:

- Press **FIND HS** again.

### -OR-

- Press 🏠**HOME/FLASH**, 📞**CELL**, **OFF/CANCEL**, 📞 or any dialing keys on the handset.

- To exit the call, press **OFF/CANCEL** on the handset or place it in the telephone base or charger. The call continues until all handsets hang up.

**NOTE:** Do not press and hold **FIND HS** for more than 4 seconds. It may lead to handset deregistration.

## REDIAL LIST

Each handset stores the last 10 telephone numbers dialed. When there are already 10 entries, the oldest entry is deleted to make room for the new entry.

### Review and dial a redial list entry

- Press **REDIAL** when the handset is not in use.
- Press **▼**, **▲** or **REDIAL** repeatedly until the desired entry displays.
- Press 🏠**HOME/FLASH** or 📞 to dial with the home line, or press 📞**CELL** to dial with the cell line.

### Delete a redial list entry

- Search for or review the redial list entries (see **Review and dial a redial list entry**).
- When the desired redial entry displays, press **MUTE/DELETE**.

## INTERCOM

Use the intercom features for conversations between two devices.

- Press **MENU** when the handset is not in use.
- Press **▼** or **▲** to scroll to **Intercom**, then press **SELECT**.
  - The screen displays **Intercom to**.
- Use the dialing keys to enter a device number (1-5).
- To answer the intercom call, press 🏠**HOME/FLASH**, 📞**CELL**, or 📞 on the destination handset.
  - Both handsets shows **Intercom**.
- To end the intercom call, press **OFF/CANCEL** or place the handset back in the charger.

### Answer an incoming home call during an intercom call

If you receive an incoming home call during an intercom call, there is an alert tone. Handsets flash 🏠 and display the caller ID.

If you receive an incoming cell call during an intercom call, you will hear an alert tone. Handsets flash 📞 and display the caller ID.

- To answer a home call, press 🏠**HOME/FLASH**. The intercom call ends automatically.
- To end the intercom call without answering the outside call, press **OFF/CANCEL**. The telephone continues to ring.

While **ENTERING** names and numbers, you can:

- Press **MUTE/DELETE** to backspace and erase a digit or character.

- Press **and hold MUTE/DELETE** to erase the entire entry.
- Press **▼** or **▲** to move the cursor to the left or right.

- Press **and hold PAUSE** to insert a dialing pause (for entering numbers only).

- Press **0** to add a space (for entering names only).
- Press **TONE X** to change the next letter to upper or lower case.

### Review a phonebook entry

Entries are sorted alphabetically.

- Press 📞 when the phone is not in use.
  - Press **▼** or **▲** to browse through the phonebook, or use the dialing keys to start a name search.
- Review a phonebook entry**
- Entries are sorted alphabetically.
- Press 📞 when the phone is not in use.
  - Press **▼** or **▲** to browse through the phonebook, or use the dialing keys to start a name search.
- You can let the destination handset join you on the outside call in a three-way

conversation. Press 🏠**HOME/FLASH** on the originating handset.

- You can transfer the call. Press **OFF/CANCEL**, or place your handset back in the charger. The destination handset is then connected to the outside call.

- The destination handset can end the intercom call by pressing **OFF/CANCEL**, or by placing the handset back in the charger. The outside call continues with the originating handset.

## PHONEBOOK

The phonebook can store up to 1,000 entries, which are shared by all handsets. Each entry may consist of a telephone number up to 30 digits, and a name up to 15 characters.

### Add a phonebook entry

- Enter the number when the phone is not in use. Press **MENU**, then go to Step 3.
  - OR**- Press **MENU** when the phone is not in use, then press **▼** or **▲** to choose **Phonebook** and press **SELECT**. Press **SELECT** again to choose **Add new entry**.

- Use the dialing keys to enter the number.
  - OR**- Copy a number from the redial list by pressing **REDIAL** and then press **▼**, **▲** or **REDIAL** repeatedly to select a number. Press **SELECT** to copy the number.
- Press **SELECT** to move on to enter the name.
- Use the dialing keys to enter the name. Additional key presses show other characters of that particular key.
- Press **SELECT** to save.

While **ENTERING** names and numbers, you can:

- Press **MUTE/DELETE** to backspace and erase a digit or character.

- Press **and hold MUTE/DELETE** to erase the entire entry.

- Press **▼** or **▲** to move the cursor to the left or right.

- Press **and hold PAUSE** to insert a dialing pause (for entering numbers only).

- Press **0** to add a space (for entering names only).
- Press **TONE X** to change the next letter to upper or lower case.

### Delete a phonebook entry

- Search for or review the directory entries (see **Review a phonebook entry**).
- When the desired entry displays, press **MUTE/DELETE**.
- When the handset displays **Delete entry?**, press **SELECT**.

### Edit a directory entry

- Search for or review the directory entries (see **Review a phonebook entry**).
- When the desired entry displays, press **SELECT**.
- Use the dialing keys to edit the number, then press **SELECT**.
- Use the dialing keys to edit the name, then press **SELECT**.

### Dial a directory entry

- Search for or review the directory entries (see **Review a phonebook entry**).
- When the desired entry appears, press 🏠**HOME/FLASH** or 📞 to dial with the home line, or press 📞**CELL** to dial with the cell line.

## CALLER ID

If you subscribe to caller ID service, information about each caller appears after the first or second ring. If you answer a call before the caller information appears on the screen, it will not be saved in the caller ID log.

The caller ID log stores up to 50 entries. Each entry has up to 24 digits for the phone number and 15 characters for the name.

Only the telephone number has more than 15 digits, only the last 15 digits appear. If the name has more than 15 characters, only the first 15 characters are shown and saved in the caller ID log.

### Review a caller ID log entry

- Press **CID** when the phone is not in use.
- Press **▼** or **▲** to browse through the caller ID log.

### Missed call indicator

When there are calls that have not been reviewed in the caller ID log, the handset displays **XX Missed calls**.

Each time you review a caller ID log entry marked **NEW**, the number of missed calls decreases by one. When you have reviewed all the missed calls, the missed call indicator no longer displays.

If you do not want to review the missed calls one by one, **press and hold OFF/CANCEL** on the idle handset to erase the missed call indicator. All the entries are then considered old.

### Dial a caller ID log entry

- Search for or review the caller ID log entries (see **Review a caller ID log entry**).
- When the desired entry appears, press 🏠**HOME/FLASH** or 📞 to dial with the home line, or press 📞**CELL** to dial with the cell line.

### Save a caller ID log entry to the phonebook

- Search for or review the caller ID log entries (see **Review a caller ID log entry**).
- When the desired caller ID log entry displays, press **SELECT**.
- Press **▼** or **▲** to scroll to **To Phonebook** and then press **SELECT**.
- Use the dialing keys to edit the number, if necessary. Then press **SELECT**.
- Use the dialing keys to edit the name, if necessary. Then press **SELECT**.

### Delete the caller ID log entries

- Search for or review the caller ID log entries (see **Review a caller ID log entry**).
- When the desired caller ID log entry displays, press **MUTE/DELETE**.

### To delete all caller ID log entries:

- Press **MENU** when the phone is not in use.
- Press **▼** or **▲** to scroll to **Caller ID log** and then press **SELECT**.
- Scroll to **Delete all** and then press **SELECT** twice.

## SMART CALL BLOCKER <sup>\*S</sup>

If you have subscribed to caller ID service, then you can use the Smart call blocker feature to filter incoming home calls from unknown callers.

### Turn Smart call blocker on or off

Smart call blocker is set to on, and to allow all incoming calls by default. To turn on or off Smart call blocker:

- Press **CALL BLOCK** when the phone is not in use.
- Press **SELECT** to choose **SCB On/Off**.
- Press **▼** or **▲** to choose **On** or **Off**, then press **SELECT**.

- NOTES:**
  - Smart call blocker is on, once you install your telephone. It allows all incoming calls to get through and ring by default. You can change the Smart call blocker settings to screen incoming home calls from numbers or names that are not yet saved in your phonebook allow list, block list, or star name list. You can easily add incoming phone numbers to your allow list and block list. This allows you to build up your lists of allowed and blocked numbers, and Smart call blocker will know how to deal with these calls when they come in again.

The screening feature of Smart call blocker is applicable to home calls only. All incoming cell calls will get through and ring. If you want to block a cell call, add the number to the Block list.

If you turn off Smart call blocker, all incoming calls will ring, including numbers saved in your block list.

### Quick setup using the “Set profile” option

You can perform the following steps to quickly set up Smart call blocker, as described in the four scenarios below.

- Press **CALL BLOCK** when the phone is not in use.
- Press **▼** or **▲** to scroll to **Set profile** and then press **SELECT**.
- Scroll to one of the four options and then press **SELECT** to choose.

- Screen unknown**
- Screen robot**
- Block unknown** (default setting)
- Block unknown**

### Choose the Smart call block configuration that best suits your needs

Scenarios I want to...	“Set profile” options
<p><b>Scenario 1</b></p> <p>Screen any home calls from numbers not saved in the Phonebook, Allow list or Star name list.</p> <p><i>Robocalls included</i></p>	<p><span><span>📞</span></span>Screen unknown</p> <p>Set your telephone to screen all unknown home calls and ask the callers to leave their names before putting the calls through to you.</p>
<p><b>Scenario 2</b></p> <p>Screen robocalls only.</p>	<p><span><span>📞</span></span>Screen robot</p> <p>Set your telephone to screen all unknown home calls and ask the callers to press the # key before putting the calls through to you.</p>

Scenarios I want to...	“Set profile” options
<p><b>Scenario 3</b></p> <p>Allow all calls except the people on the Block list only.</p> <p><i>(Default setting)</i></p>	<p><span><span>📞</span></span>Block unknown</p> <p>Set your telephone to allow all unknown home calls to ring without screening them.</p>
<p><b>Scenario 4</b></p> <p>Block any home calls from numbers not saved in the Phonebook, Allow list or Star name list.</p>	<p><span><span>📞</span></span>Block unknown</p> <p>Set your telephone to block all unknown home calls.</p>

- NOTE:** To learn more about how each profile setting can be used and how to add numbers to the Block list and perform the necessary preparations before use, read the Introducing Smart call blocker leaflet included in your package.

<sup>\* Use of Smart call blocker feature requires subscription of caller ID service. <sup>S</sup> Includes licensed Qualcomm technology. ©IntelTM is a trademark of Truecall Group Limited.</sup>

## SOUND SETTINGS

### Key tone

You can turn on the key tone on or off.

- Press **MENU** when the handset is not in use.
- Press **▼** or **▲** to scroll to **Settings** and then press **SELECT**.
- Press **▼** or **▲** to scroll to **Key tone**, then press **SELECT**.
- Press **▼** or **▲** to scroll to choose **On** or **Off**, then press **SELECT** to save.

### Ringer tone

You can choose from different ringer tones for incoming home and cell calls.

### Set ringer tone for home line:

- Press **MENU** when the handset is not in use.
- Press **▼** or **▲** to scroll to **Ringers** and then press **SELECT**.
- Press **▼** or **▲** to scroll to **Home ringtone** and then press **SELECT**.

below; or

- Charges for installation or set up, adjustment of customer controls, and installation or repair of systems outside the unit.

**How do you get warranty service?**

To obtain warranty service in the United States of America, please visit our website at [www.vtechphones.com](http://www.vtechphones.com) or call 1 (800) 595-9511 for instructions regarding where to return the Product. In Canada, go to [phones.vtechcanada.com](http://phones.vtechcanada.com) or dial 1 (800) 267-7377.

**NOTE:** Before calling for service, please review our user's manual - a check of the Product's controls and features may save you a