

Go to www.vtechphones.com (US) to register your product for enhanced warranty support and latest VTech product news.

Go to phones.vtechcanada.com (CA) for latest VTech product news.

ICS3111 ICS3141
ICS3121 ICS3151
ICS3131 ICS3161
ICS3171

DECT 6.0 Intercom System



vtech
User's manual

Scan the QR code for support information

(US) (CA)

Recycle this product when you are done with it

Scan the QR code on the right or visit www.vtechphones.com/recycle

(For the US only)

Specifications are subject to change without notice.
© 2024 Vtech Communications, Inc.
© 2024 Vtech Communications Canada Ltd.
All rights reserved. 02/24, ICS31X1, UM, V1.0

Recycling symbol

TECHNICAL SPECIFICATIONS

Frequency control	Crystal controlled PLL synthesizer
Transmit frequency	Main unit: 1921.536-1928.448 MHz Sub unit: 1921.536-1928.448 MHz
Channels	DECT channel: 5
Nominal effective range	Maximum power allowed by FCC and IC. Actual operating range may vary according to environmental conditions at the time of use.
Power requirement	Main unit: 5V DC @ 1.0A Sub unit: 5V DC @ 1.0A Battery: 3.6V Ni-MH battery

DISCLAIMER AND LIMITATION OF LIABILITY

VTECH COMMUNICATIONS, INC. AND ITS SUPPLIERS ASSUME NO RESPONSIBILITY FOR ANY DAMAGE OR LOSS RESULTING FROM THE USE OF THIS USER'S MANUAL. VTECH COMMUNICATIONS, INC. AND ITS SUPPLIERS ASSUME NO RESPONSIBILITY FOR ANY LOSS OR CLAIMS BY THIRD PARTIES THAT MAY ARISE THROUGH THE USE OF THIS PRODUCT.

COMMANY: VTECH COMMUNICATIONS, INC.
ADDRESS: 9020 SW WASHINGTON SQUARE ROAD - STE 555 TIGARD, OR 97223, UNITED STATES
PHONE: 1 (800) 595-9511 IN THE U.S. OR 1 (800) 267-7377 IN CANADA

IMPORTANT SAFETY INSTRUCTIONS

- When using your intercom equipment, basic safety precautions should always be followed to reduce the risk of fire, electric shock and injury, including the following:
- Read and understand all instructions.
 - Follow all warnings and instructions marked on the product.
 - Unplug this product from the wall outlet before cleaning. Do not use liquid or aerosol cleaners. Use a damp cloth for cleaning.
 - CAUTION:** Do not install the product at a height above 2 meters.
 - Do not use this product near water such as near a bath tub, wash bowl, kitchen sink, laundry tub or a swimming pool, nor in a wet basement or shower.
 - Do not place this product on an unstable table, shelf, stand or other unstable surfaces.
 - Avoid placing the product in places with extreme temperature, direct sunlight, or other electrical devices. Protect the product from moisture, dust, corrosive liquids and fumes.
 - Slots and openings in the back or bottom of the main unit and sub unit(s) are provided for ventilation. To protect them from overheating, these openings must not be blocked by placing the product on a soft surface such as a bed, sofa or rug. This product should never be placed near or over a radiator or heat register. This product should not be placed in any area where proper ventilation is not provided.
 - This product should be operated only from the type of power source indicated on the marking label. If you are not sure of the type of power supply in your home or office, consult your dealer or local power company.
 - Do not allow anything to rest on the power cord. Do not install this product where the cord may be walked on.
 - Never push objects of any kind into this product through the slots in the main unit or sub unit(s) because they may touch dangerous voltage points or create a short circuit. Never spill liquid of any kind on the product.
 - To reduce the risk of electric shock, do not disassemble this product, but take it

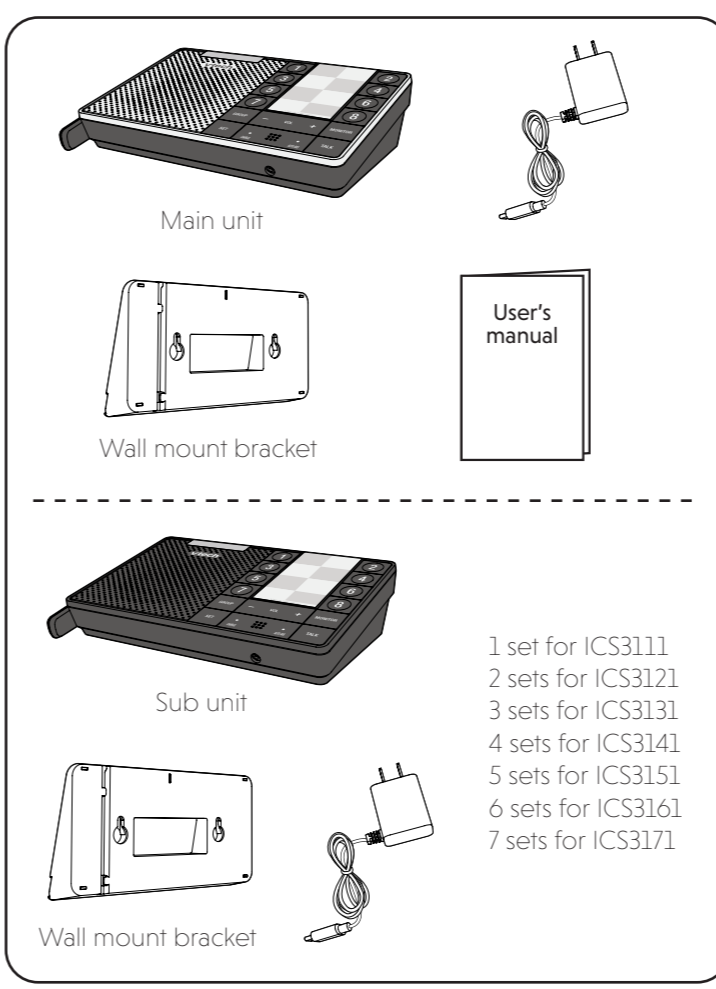
- Do not overload wall outlets and extension cords.
- Unplug this product from the wall outlet and refer servicing to an authorized service facility under the following conditions:
 - When the power supply cord or plug is damaged or frayed.
 - If liquid has been spilled onto the product.
 - If the product has been exposed to rain or water.
 - If the product does not operate normally by following the operating instructions. Adjust only those controls that are covered by the operation instructions. Improper adjustment of other controls may result in damage and often requires extensive work by an authorized technician to restore the product to normal operation.
 - If the product has been dropped and the telephone base and/or handset has been damaged.
 - If the product exhibits a distinct change in performance.
- Avoid using the product during an electrical storm. There is a remote risk of electric shock from lightning.
- The power adapter is intended to be correctly oriented in a vertical or floor mount position. The prongs are not designed to hold the plug in place if it is plugged into a ceiling, under-the-table or cabinet outlet.
- For pluggable equipment, the socket-outlet shall be installed near the equipment and shall be easily accessible.
- CAUTION:** Use only the batteries indicated in this manual. There may be a risk of explosion if a wrong type of battery is used. Use only the supplied rechargeable batteries. Do not dispose of batteries in a fire. They may explode. Disposed of used batteries according to the instruction.
 - Do not use the battery in following conditions:
 - High or low extreme temperature during use, storage or transportation.

- Replacement of a battery with an incorrect type that can defeat a safeguard.
 - Disposal of a battery into fire or a hot oven, or mechanically crushing or cutting of a battery, that can result in an explosion.
 - Leaving a battery in an extremely high temperature surrounding environment that can result in an explosion or the leakage of flammable liquid or gas.
 - A battery subjected to extremely low air pressure that can result in an explosion or the leakage of flammable liquid or gas.
- Use only the adapter included with this product. Incorrect adapter polarity or voltage can seriously damage the product.
 - The applied nameplate is located at the bottom or near of the product.
- SAVE THESE INSTRUCTIONS**
- Battery**
- Use only the batteries provided or equivalent.
 - Do not dispose of the batteries in a fire. Check with local waste management codes for special disposal instructions.
 - Do not open or mutilate the batteries. Released electrolyte is corrosive and may cause burns or injury to the eyes or skin. The electrolyte may be toxic if swallowed.
 - Exercise care in handling batteries in order not to create a short circuit with conductive materials.
 - Charge the batteries provided with this product only in accordance with the instructions and limitations specified in this manual.
- Precautions for users of implanted cardiac pacemakers**
Cardiac pacemakers (applies only to digital cordless telephones)
Wireless Technology Research, LLC (WTR), an independent research entity, led a multidisciplinary evaluation of the interference between portable wireless telephones and implanted cardiac pacemakers. Supported by the U.S. Food and Drug Administration, WTR recommends to physicians that:
- Should keep wireless telephones at least six inches from the pacemaker.
 - Should NOT place wireless telephones directly over the pacemaker, such as in a breast pocket, when it is turned ON.

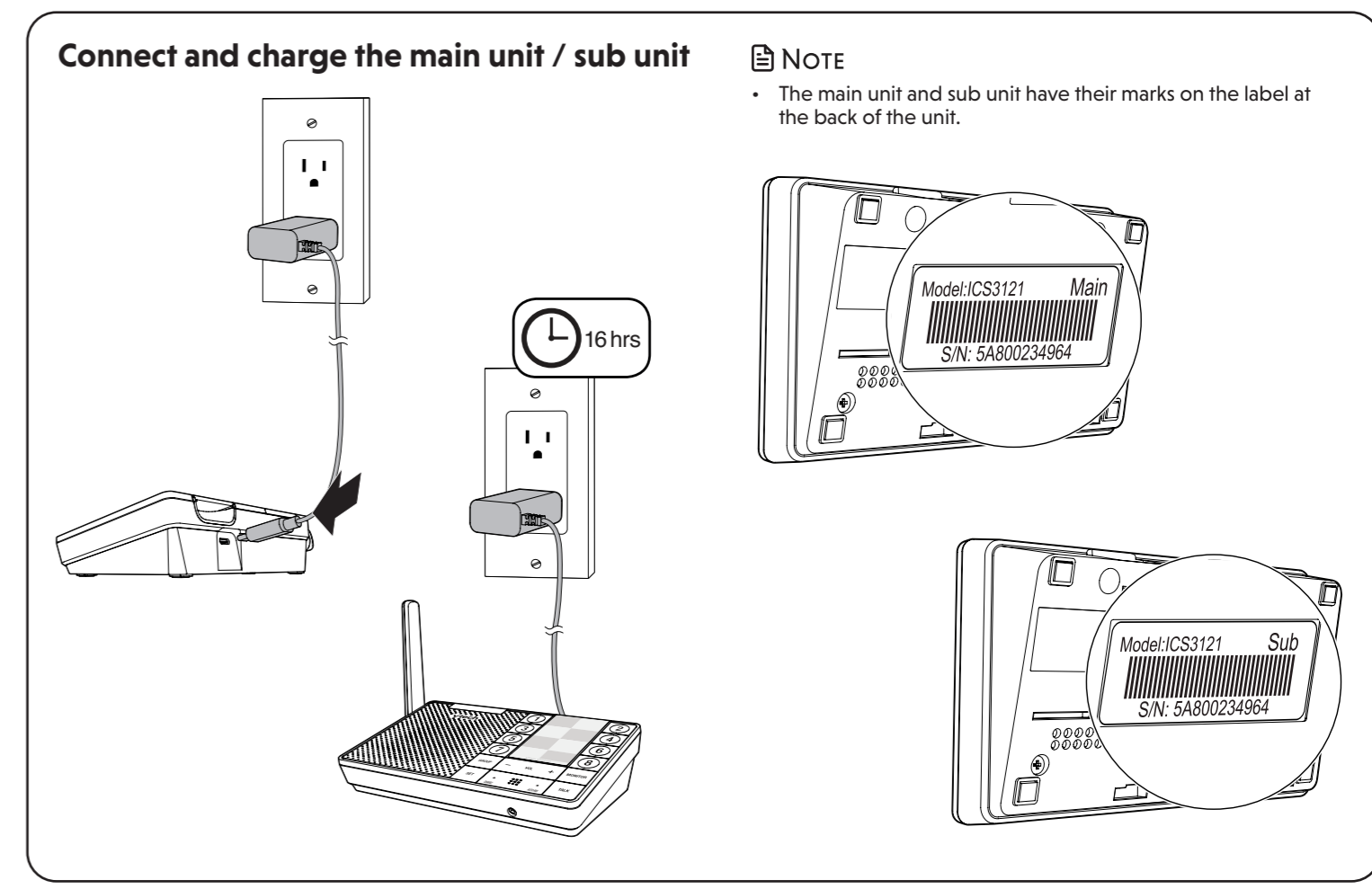
ABOUT CORDLESS INTERCOM SYSTEM

- Privacy:** The same features that make an intercom system convenient create some limitations. Intercom calls are transmitted between the main unit and the sub unit(s) by radio waves, so there is a possibility that the intercom call conversations could be intercepted by radio receiving equipment within range of the intercom system. For this reason, you should not think of intercom call conversations as being as private as those on corded telephones.
- Electrical power:** The main unit of this intercom system must be connected to a working electrical outlet. The electrical outlet should not be controlled by a wall switch. Calls cannot be made from the sub unit if the main unit is unplugged, switched off or if the electrical power is interrupted.
- Potential TV interference:** Some intercom systems operate at frequencies that may cause interference to televisions and VCRs. To minimize or prevent such interference, do not place the main unit of the intercom system near or on top of a TV or VCR. If interference is experienced, moving the intercom system farther away from the TV or VCR often reduces or eliminates the interference.
- Rechargeable batteries:** Exercise care in handling batteries in order not to create a short circuit with conducting material such as rings, bracelets and keys. The battery or conductor may overheat and cause harm. Observe proper polarity between the battery and the battery charger.
- Nickel-metal hydride rechargeable batteries:** Dispose of these batteries in a safe manner. Do not burn or puncture the battery. Like other batteries of this type, if burned or punctured, they could release caustic material which could cause injury.

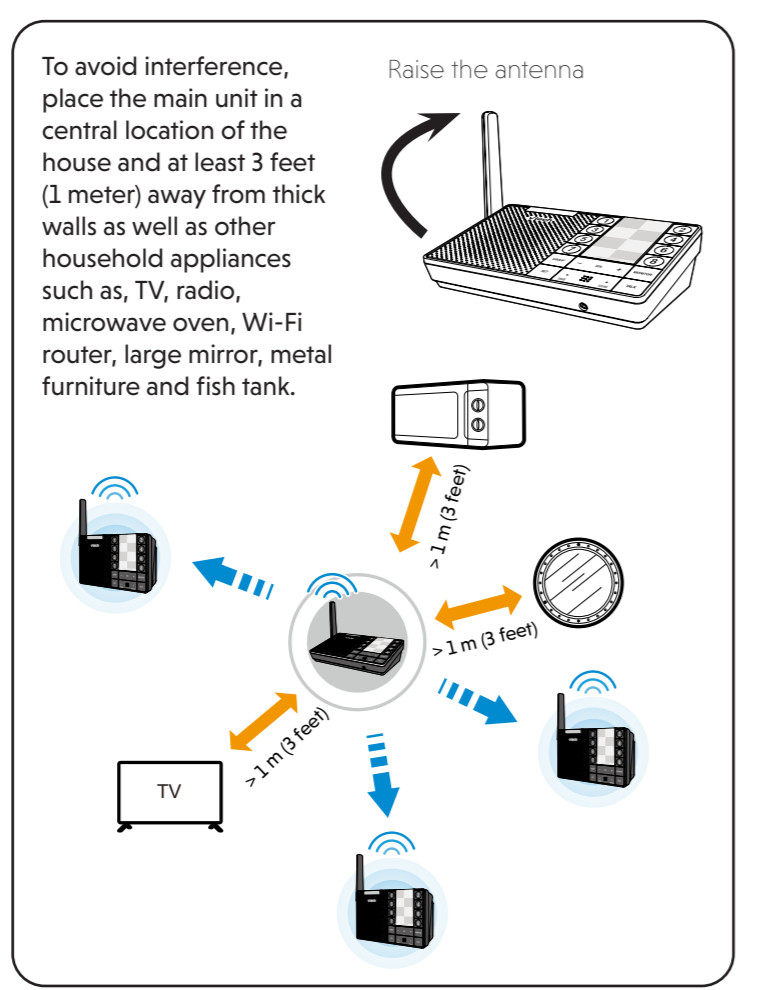
WHAT'S IN THE BOX



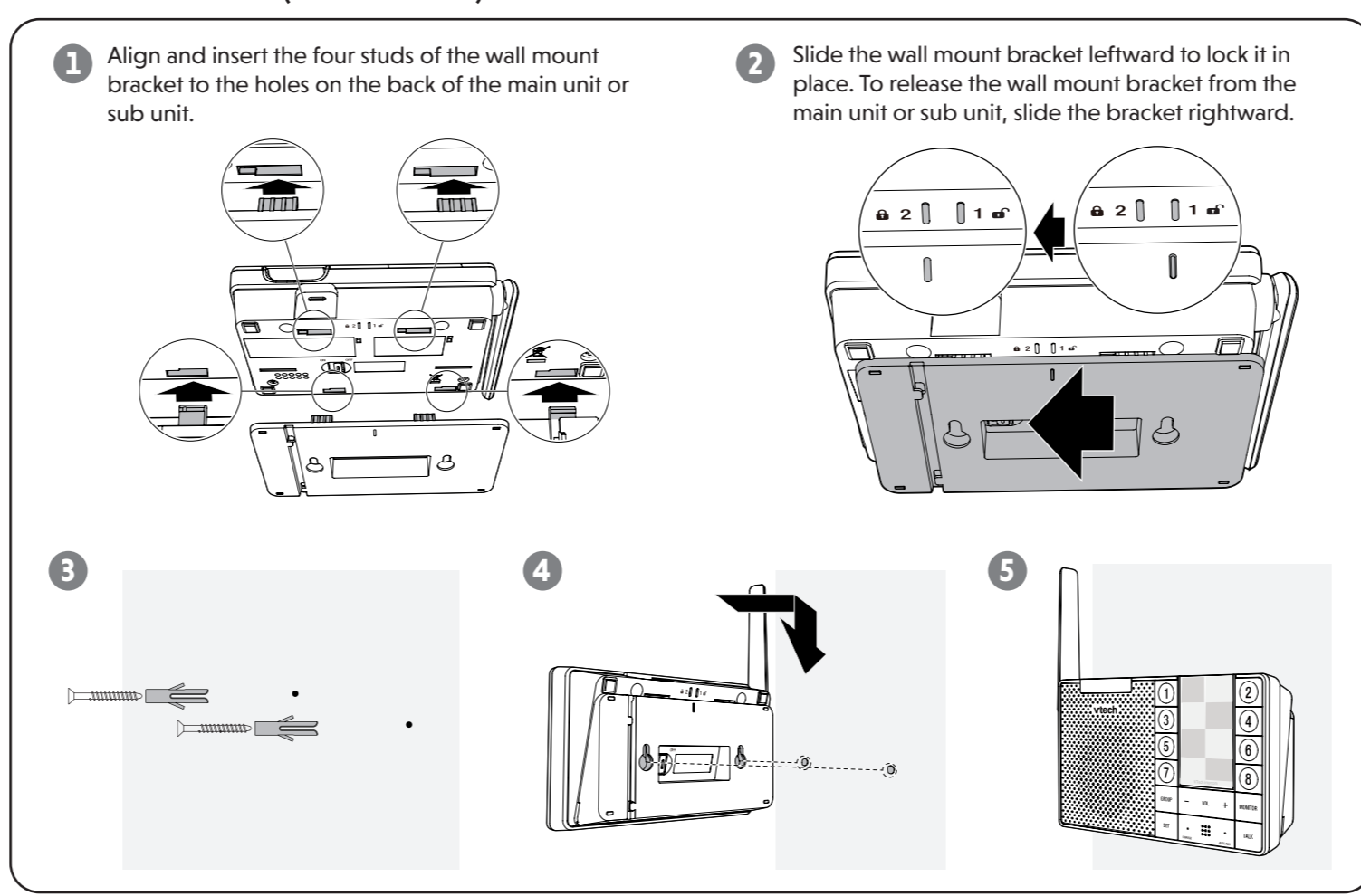
CONNECT AND CHARGE THE BATTERY



IMPROVE SIGNAL STRENGTH



WALL MOUNT (OPTIONAL)



OVERVIEW

