

## [VTECH]

### [2.4GHz Antenna]

**Model:** LF2423 BU

#### **Antenna description:**

This antenna is optimized and used in the Baby unit in the baby monitor models. This antenna is an on-board antenna that directly connect to the RF output in the main PCB.

#### **Ordering information:**

<b>Model</b>	<b>Description</b>
LF2423 BU	2.4GHz Antenna

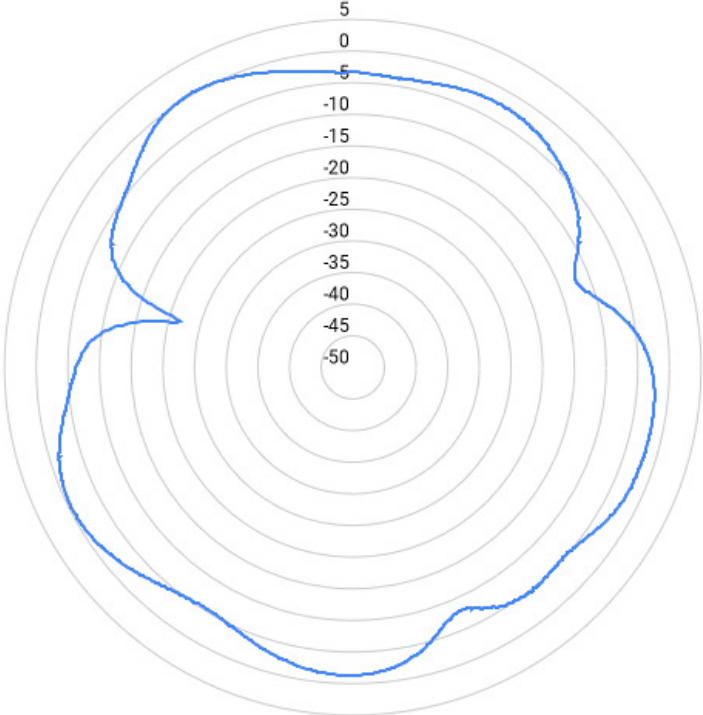
#### **Specification:**

<b>Operation Frequency Range</b>	2405-2475 MHz
<b>Maximum Gain</b>	0 dBi
<b>Type</b>	Monopole on-board antenna
<b>Operation bandwidth</b>	70MHz
<b>Nominal Impedance</b>	~50 ohms
<b>Connectors</b>	-
<b>Dimensions</b>	8x25mm
<b>Manufacturer</b>	Vtech Telecommunications Ltd
<b>Manufacturer address</b>	23/F, Tai Ping Industrial Centre, Blk1, 57 Ting Kok Road, Tai Po, Hong Kong
<b>Model number</b>	ANT-LF2423-F-FH-1

**[VTECH]**  
**[2.4GHz Antenna]**

Antenna pattern (2436MHz) (the frequency with maximum gain)

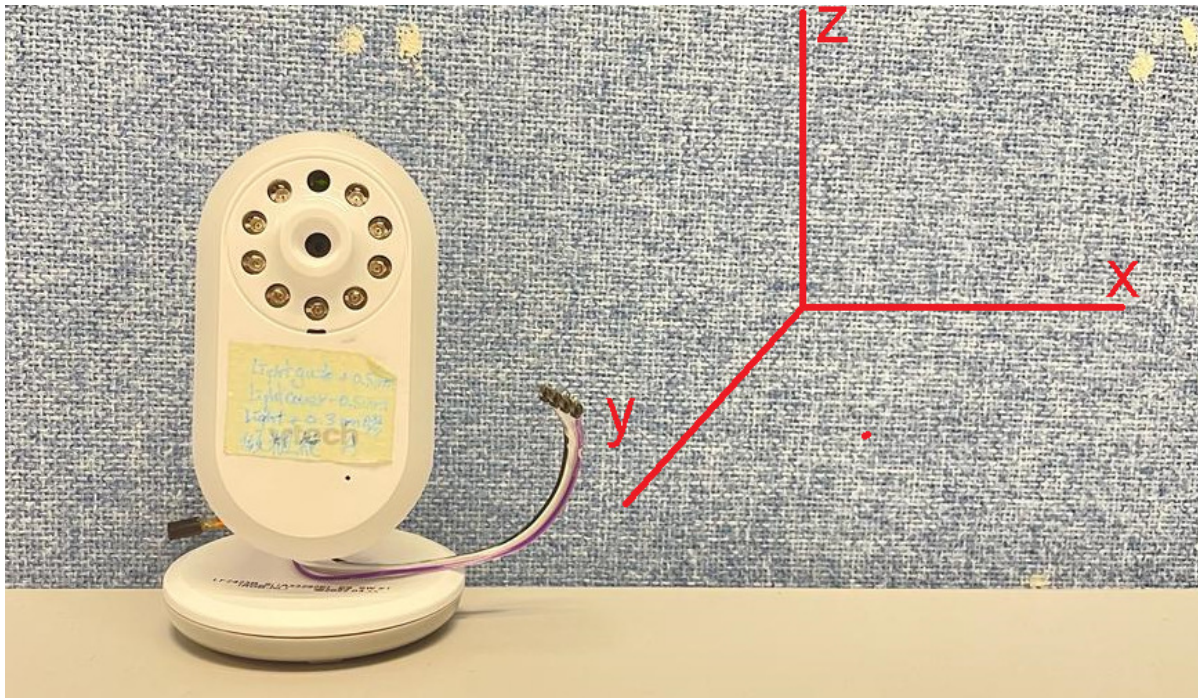
XY plane (gain theta)



[VTECH]

[2.4GHz Antenna]

Coordination:



Physical Dimension:

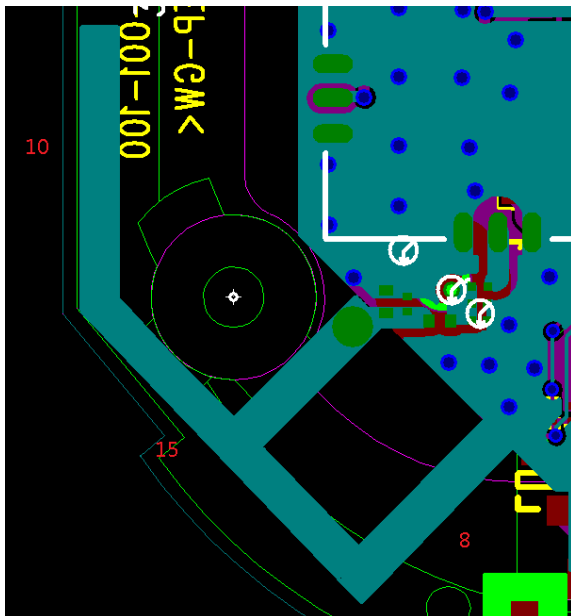


Figure 1 Physical dimension (mm)