

Model: SB67258 Base ANT0

Antenna description:

This Sleeve Dipole antenna is optimized and used in the Base unit. This antenna is directly soldered to the ANT0 RF output in the main PCB.

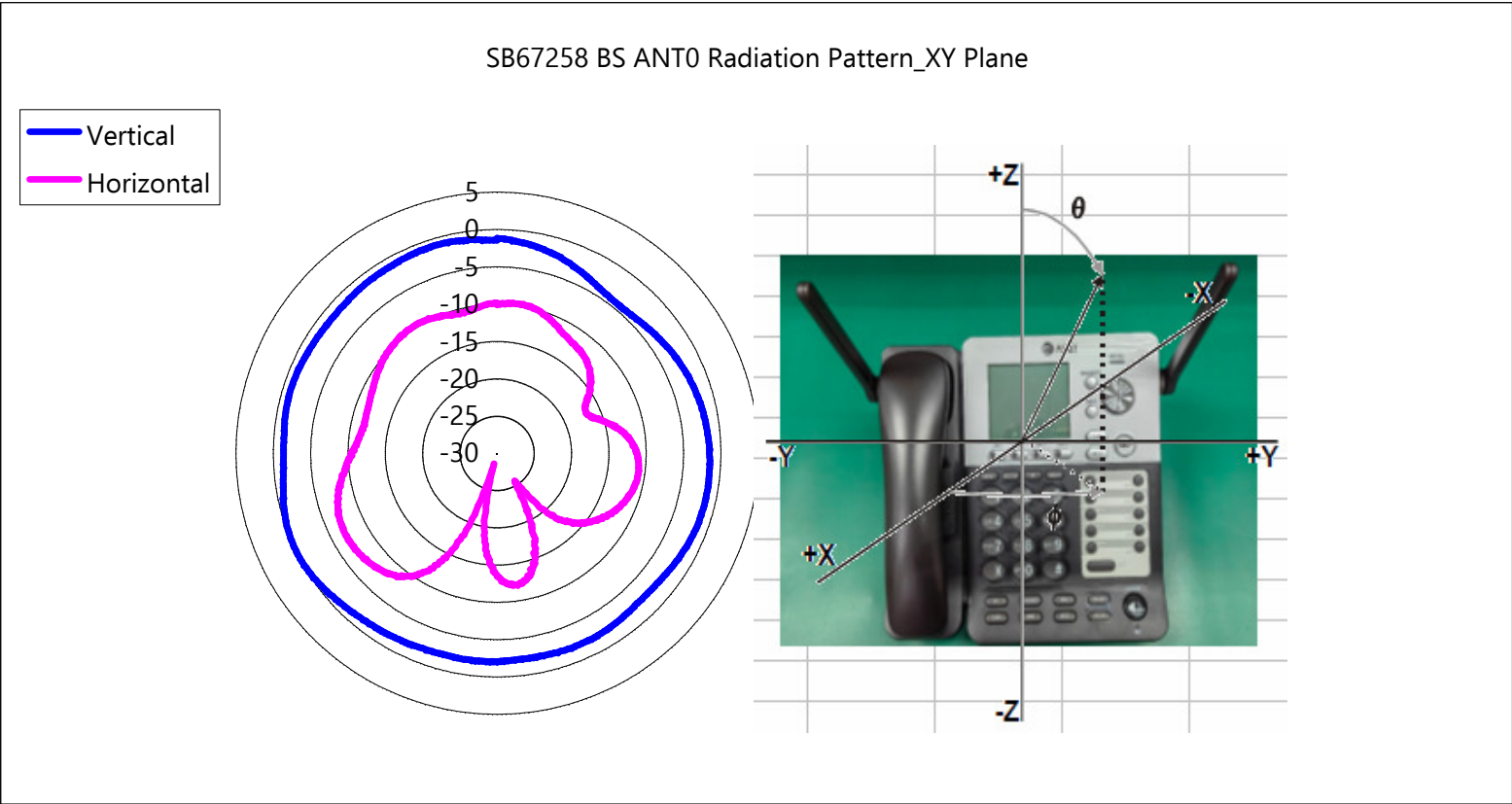
Model Number	Description
SB67258 Base ANT0	1.9GHZ Sleeve Dipole Antenna

Specification:

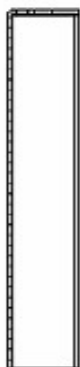
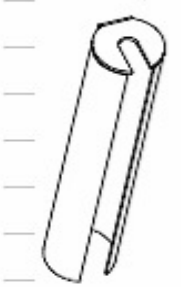
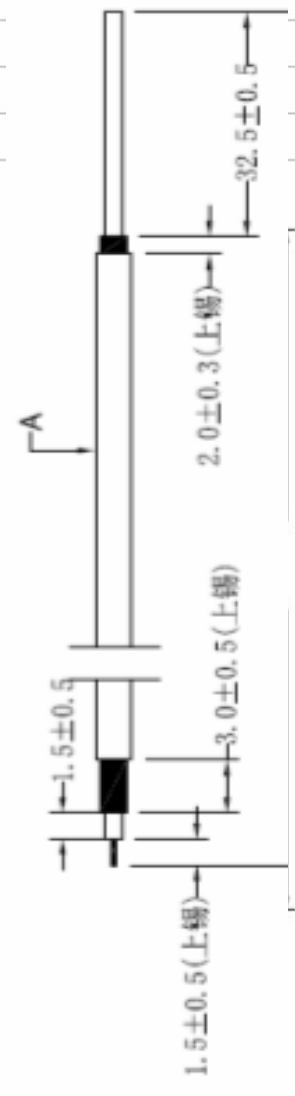
Operation Frequency Range	1921.536 to 1928.448 MHZ
Maximum Gain	0 dBi
Type	Sleeve Dipole Antenna
Nominal Impedance	~50 ohms
Manufacturer	Vtech Telecommunications Ltd
Manufacturer address	23/F, Tai Ping Industrial Centre, Blk1, 57 Ting Kok Road, Tai Po, Hong Kong
Model number	ANT-SB67258-F-DE-0

Frequency: 1924.992 MHz (the frequency with maximum gain)

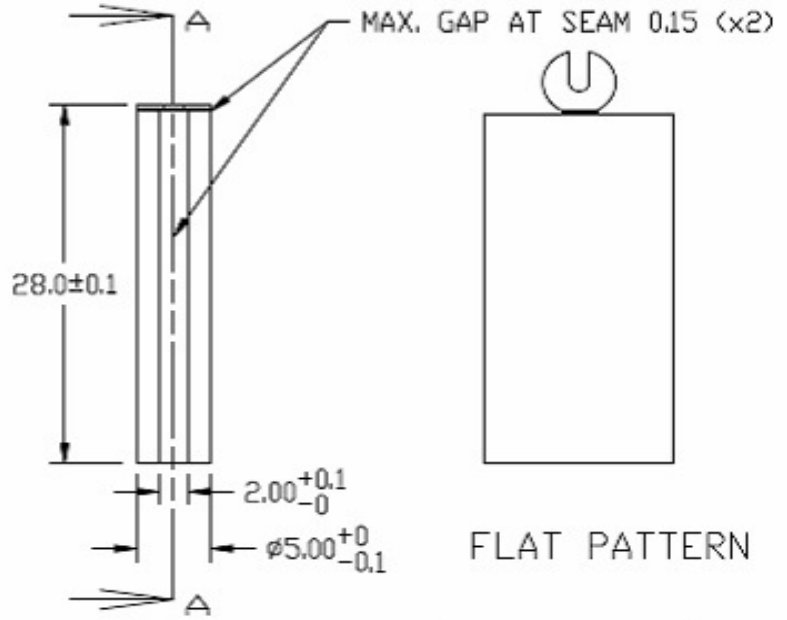
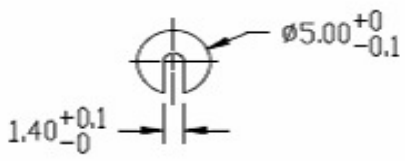
	Vertical	Horizontal
Antenna Gain (dBi)	0.00	-6.91



SLB67258 BS ANT0 Dimensions in mm:



SECTION A-A



Model: SB67258 Base ANT1

Antenna description:

This Sleeve Dipole antenna is optimized and used in the Base unit. This antenna is directly soldered to the ANT1 RF output in the main PCB.

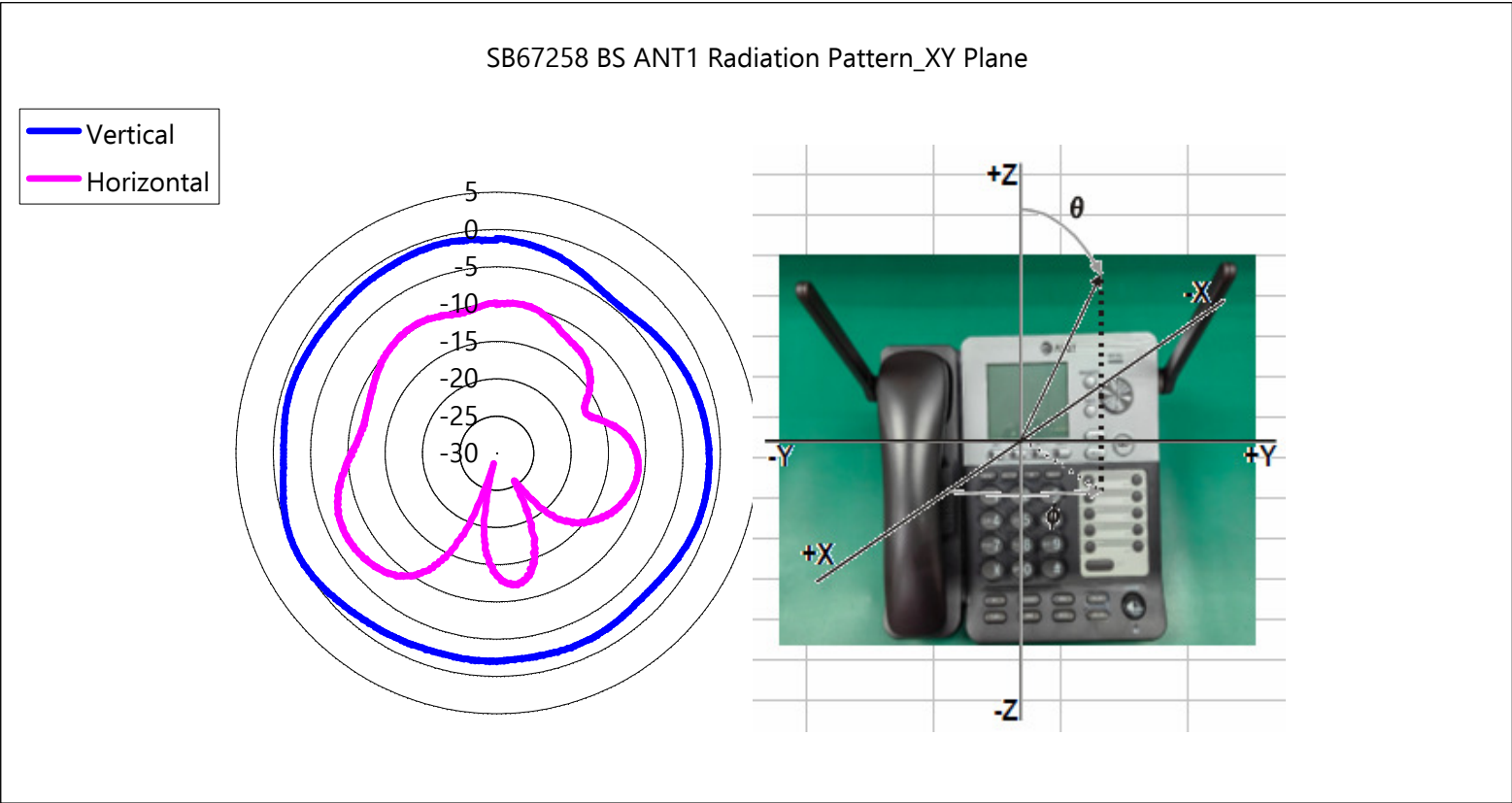
Model Number	Description
SB67258 Base ANT1	1.9GHZ Sleeve Dipole Antenna

Specification:

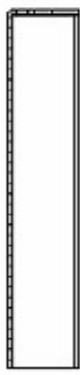
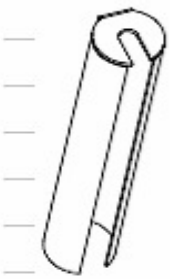
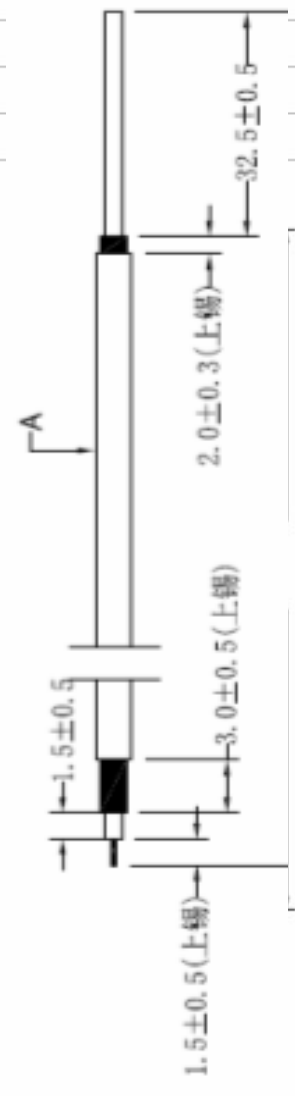
Operation Frequency Range	1921.536 to 1928.448 MHZ
Maximum Gain	0 dBi
Type	Sleeve Dipole Antenna
Nominal Impedance	~50 ohms
Manufacturer	Vtech Telecommunications Ltd
Manufacturer address	23/F, Tai Ping Industrial Centre, Blk1, 57 Ting Kok Road, Tai Po, Hong Kong
Model number	ANT-SB67258-F-DE-1

Frequency: 1924.992 MHz (the frequency with maximum gain)

	Vertical	Horizontal
Antenna Gain (dBi)	0.00	-6.91



SLB67258 BS ANT1 Dimensions in mm:



SECTION A-A

