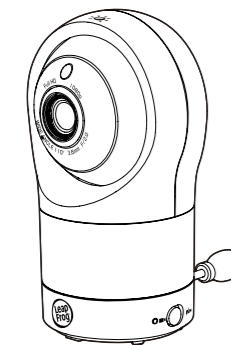




High Definition Pan & Tilt Camera

LF1911



Parent Guide

This guide contains important information. Please keep it for future reference.

Need help?

Visit leapfrog.com/support

Visit our website leapfrog.com for more information about products, downloads, resources and more. Read our complete warranty policy online at leapfrog.com/warranty.



Scan the QR code to enter our Online Manual:

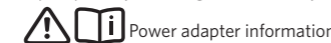


Or go to leapfrog.zendesk.com/hc

Important Safety Instructions

The applied nameplate is located at the bottom of the camera's base. When using your equipment, basic safety precautions should always be followed to reduce the risk of fire, electric shock and injury, including the following:

- Follow all warnings and instructions marked on the product.
- Adult setup is required.
- CAUTION:** Do not install the camera at a height above 2 meters.
- This product is not a substitute for adult supervision of the infant. Supervising the infant is the parent's or caregiver's responsibility. This product could cease operating, and therefore you should not assume it will continue working properly for any given period of time. Further, this is not a medical device and should not be used as such. This product is intended to assist you in supervising your baby.
- Do not use this product near water. For example, do not use it next to a bath tub, wash bowl, kitchen sink, laundry tub or swimming pool, or in a wet basement or shower.
- Use only the adapters included with this product. Incorrect adapter polarity or voltage can seriously damage the product.



Power adapter information:

Camera Output: 5V DC 1.5A;
VTECH Telecommunications Ltd.; Model: VT07EUS05150

- The power adapters are intended to be correctly oriented in a vertical or floor mount position. The prongs are not designed to hold the plug in place if it is plugged into a ceiling, under-the-table or cabinet outlet.
- For pluggable equipment, the socket-outlet shall be installed near the equipment and shall be easily accessible.
- Unplug this product from the wall outlet before cleaning.
- Do not use liquid or aerosol cleaners. Use a damp cloth for cleaning. Do not cut off the power adapters to replace them with other plugs, as this causes a hazardous situation.
- Do not allow anything to rest on the power cords. Do not install this product where the cords may be walked on or crimped.
- This product should be operated only from the type of power source indicated on the marking label. If you are not sure of the type of power supply in your home, consult your dealer or local power company.
- Do not overload wall outlets or use an extension cord.
- Do not place this product on an unstable table, shelf, stand or other unstable surfaces.
- This product should not be placed in any area where proper ventilation is not provided. Slots and openings in the back or bottom of this product are provided for ventilation. To protect them from overheating, these openings must not be blocked by placing the product on a soft surface such as a bed, sofa or rug. This product should never be placed near or over a radiator or heat register.
- Never push objects of any kind into this product through the slots because they may touch dangerous voltage points or create a short circuit. Never spill liquid of any kind on the product.
- To reduce the risk of electric shock, do not disassemble this product, but take it to an authorized service facility. Opening or removing parts of the product other than specified access doors may expose you to dangerous voltages or other risks. Incorrect reassembling can cause electric shock when the product is subsequently used.
- You should test the sound reception every time you turn on the units or move one of the components.
- Periodically examine all components for damage.
- There is a very low risk of privacy loss when using certain electronic devices, such as cameras, cordless telephones, etc. To protect your privacy, make sure the product has never been used before purchase, reset the camera periodically by powering off and then powering on the units, and power off the camera if you will not use it for some time.

- Children should be supervised to ensure that they do not play with the product.
- The product is not intended for use by persons (including children) with reduced physical, sensory or mental capabilities, or lack of experience and knowledge, unless they have been given supervision or instruction concerning use of the appliance by a person responsible for their safety.

SAVE THESE INSTRUCTIONS

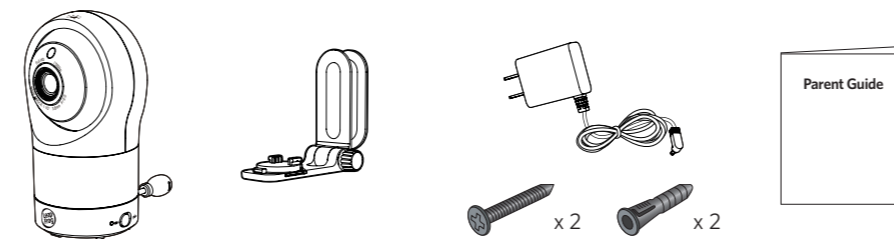
- Cautions**
- Use and store the product at a temperature between 32°F (0°C) and 104°F (40°C).
 - Do not expose the product to extreme cold, heat or direct sunlight. Do not put the product close to a heating source.
 - Warning—Strangulation Hazard—Children have STRANGLED in cords.** Keep this cord out of the reach of children (more than 3 ft (0.9m) away). Do not remove this tag.
 - Never place the camera(s) inside the baby's crib or playpen. Never cover the camera(s) with anything such as a towel or a blanket.
 - Other electronic products may cause interference with your camera. Try installing your camera as far away from these electronic devices as possible: wireless routers, radios, cellular telephones, intercoms, room monitors, televisions, personal computers, kitchen appliances and cordless telephones.

Precautions for users of implanted cardiac pacemakers
Cardiac pacemakers (applies only to digital cordless devices): Wireless Technology Research, LLC (WTR), an independent research entity, led a multidisciplinary evaluation of the interference between portable wireless devices and implanted cardiac pacemakers. Supported by the U.S. Food and Drug Administration, WTR recommends to physicians that:

- Pacemaker patients**
- Should keep wireless devices at least six inches from the pacemaker.
 - Should NOT place wireless devices directly over the pacemaker, such as in a breast pocket, when it is turned ON. WTR's evaluation did not identify any risk to bystanders with pacemakers from other persons using wireless devices.

Electromagnetic fields (EMF)
This LeapFrog product complies with all standards regarding electromagnetic fields (EMF). If handled properly and according to the instructions in this user's manual, the product is safe to be used based on scientific evidence available today.

What's Included



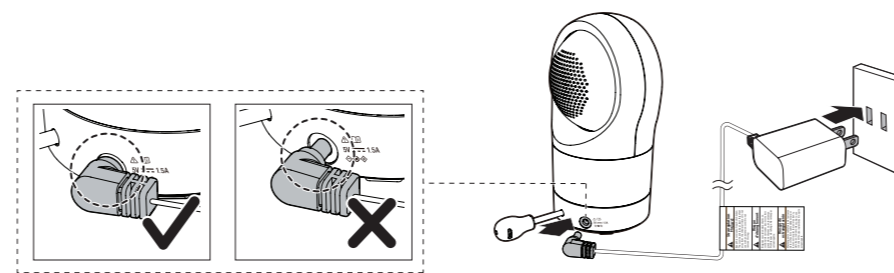
1 set for LF1911

Connect and Power On the Camera

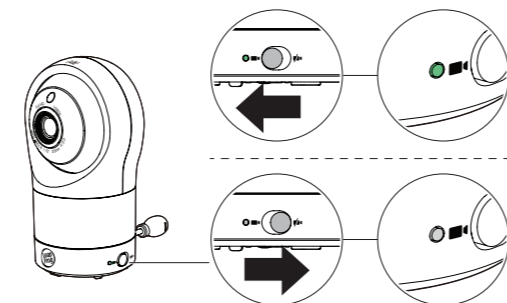
1. Connect the Camera

Notes:

- Use only the power adapter supplied with this product.
- If the camera is connected to a switch controlled electric outlet, make sure the switch is on.
- Connect the power adapters in a vertical or floor mount position only. The adapters' prongs are not designed to hold the weight of the camera, so do not connect them to any ceiling, under-the-table, or cabinet outlets. Otherwise, the adapters may not properly connect to the outlets.
- Make sure the camera and the power adapter cords are out of reach of children.
- To maintain compliance with the FCC's RF exposure guidelines, place the camera at least 20cm from nearby persons.



2. Power On or Off the Camera



Slide the **ON/OFF** switch to to power on your camera.

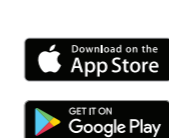
Note:

- POWER LED Light is OFF by default.

Download LeapFrog Baby Care App

Start monitoring from anywhere.

Scan the QR code to download the free LeapFrog Baby Care mobile app, or search "LeapFrog Baby Care" on Apple App Store or Google Play Store.



App Compatibility

- Android™ 6.0 or later
- iOS 12 or later.

After installing the LeapFrog Baby Care App...

- Sign up for an account
- Pair the camera with your mobile device
- Monitor your baby using a wide range of features

Pair the Camera with your Mobile Device

On LeapFrog Baby Care App

Before you start...

- Connect your mobile device to a 2.4GHz Wi-Fi network for a better connection and smoother video streaming.
- Enable the Location Service of your mobile device for the purpose of camera setup.

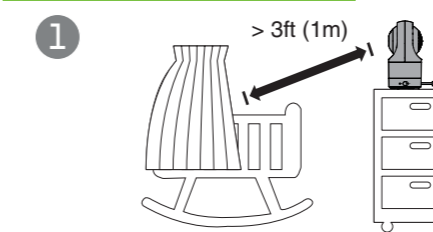
With a Wi-Fi network and enabled Location Service...

You can start to pair the camera with your own mobile device following the instructions in the app. Upon the successful pairing, you can hear and watch your baby via your mobile device.

Tips:

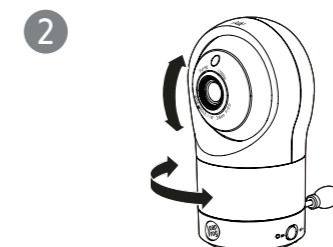
- Move the camera and the Wi-Fi router closer to each other in order to strengthen the network signal.
- It takes up around 1 minute to search the camera.

Position the Camera



Tip:

- You can find the wall mounting tutorial video and step-by-step guide by visiting our Online Manual.



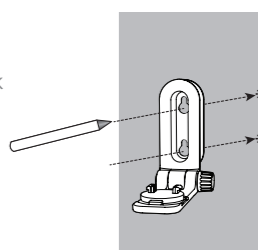
Pan and Tilt your camera viewing up to 110 degrees.

Mount the Camera (Optional)

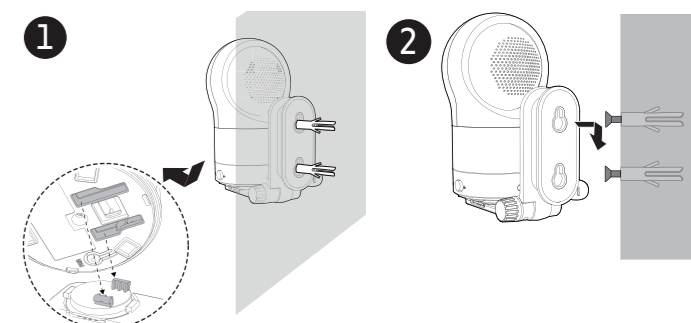
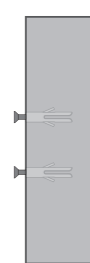
Notes:

- Check for reception strength and the camera viewing angle before drilling the holes.
- The types of screws and anchors you need depend on the composition of the wall. You may need to purchase the screws and anchors separately to mount your camera.

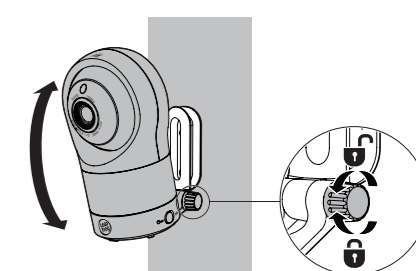
- Place the wall mount bracket on a wall and then use a pencil to mark the top and the bottom holes as shown. Remove the wall mount bracket and drill two holes in the wall (7/32 inch drill bit).
- If you drill the holes into a stud, go to step 3. If you drill the holes into an object other than a stud, insert the wall anchors into the holes. Tap gently on the ends with a hammer until the wall anchors are flush with the wall.



- Insert the screws into the holes and tighten the screws until only 1/4 inch of the screws are exposed.
- Place the camera on the wall mount bracket. Insert the mounting studs into the wall mount holes. Then, slide the camera forwards until it locks securely. Align the holes on the wall mount bracket with the screws on the wall, and slide the wall mount bracket down until it locks into place.



- You can maximize your camera viewing angles by tilting the wall mount bracket. Hold the camera, and then rotate the knob in an anti-clockwise direction. This will loosen the joint of the wall mount bracket. Tilt your camera up or down to adjust to your preferred angle. Then, rotate the knob in a clockwise direction to tighten the joint and secure the angle.



Or go to leapfrog.zendesk.com/hc

