

Go to www.vtechphones.com to register your product for enhanced warranty support and the latest Vtech product news.



VM924 VM924-2 Pan and Tilt Video Baby Monitor

vtech
Quick start guide

For more support information



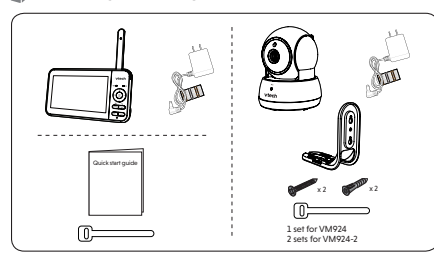
VM924 VM924-2

©2016 Vtech Industries, Inc. All rights reserved. 021.
The information herein is provided for informational purposes only. Vtech Industries, Inc. is not responsible for any damage or loss of data resulting from the use of this product. The information herein is provided for informational purposes only. Vtech Industries, Inc. is not responsible for any damage or loss of data resulting from the use of this product.

IMPORTANT SAFETY INSTRUCTIONS

- The applied nameplate is located at the bottom of the product. Read the instructions carefully. Do not use the product if you are unsure of the correct use. Read the instructions carefully. Do not use the product if you are unsure of the correct use.
- Read all warnings and instructions marked on the product.
 - CAUTION:** Do not install the baby unit at a height of 3 ft (91 cm) or higher.
 - This product is not a substitute for adult supervision of the child. Do not leave the child unattended in the product for any given period of time. Further, this is not a childproofing device and should not be used as such. This product is intended to assist you in supervising your baby. Do not use this product near water, for example, in a laundry tub or swimming pool, or in a wet basement or driveway.
 - CAUTION:** Use only the battery provided. There may be a risk of explosion if an wrong type of battery is used for the parent unit. The battery cannot be subjected to high or low extreme temperatures and low or pressure at high or low extreme temperatures during use, storage or transportation. Dispose of battery into fire or other disposal or mechanical crushing or cutting or the battery can result in an explosion. Leaving the battery in an extremely high temperature surrounding environment can result in an explosion or the leakage of flammable liquid or gas. Battery subjected to extremely low air pressure may result in an explosion or the leakage of flammable liquid or gas. Dispose of used battery according to the information in the user manual.
 - Use only the charger included with this product. Do not connect adapter polarity or voltage can seriously damage the product.
 - Power adapter information: Parent unit: 5V DC 1A. Baby unit: 5V DC 1A. Model: VT05EUS0500.
 - Rechargeable battery information: Parent unit: 3.6V, 2600mAh, 9.36Wh. Baby unit: 3.6V, 2600mAh, 9.36Wh. Model: VT05EUS0500.
 - For pluggable equipment, the socket-outlet control shall not be installed near the equipment and shall be easily accessible.
 - Do not use the product from the wall outlet before doing clean up or cleaning, as this causes a hazardous situation.
 - Do not cut out off the power adapters to replace them with other plugs, as this causes a hazardous situation.
 - Do not allow anything to rest on the power cords. Do not install this product where the cords may be walked on or tripped.
 - This product should be operated only from the type of power source indicated on the marking label. If you are not sure of the type of power supply in your home, consult your dealer or local power company.
 - Do not overload wall outlets or use an extension cord.
 - Do not place this product on an unstable table, shelf, stand or other unstable surface.
 - This product should not be placed in any area where proper ventilation is not provided. Stop and openings must be blocked or covered. The product is provided for ventilation to protect them from overheating. These openings must not be blocked by placing the product on a soft surface such as a bed, table or rug. The product should never be placed near a wall or radiator or heat register.
 - Never push objects of any kind into this product. Do not use the product if you are unsure of the correct use. Do not use the product if you are unsure of the correct use.
 - To reduce the risk of electric shock, do not touch the internal components of the product. Do not use the product if you are unsure of the correct use. Do not use the product if you are unsure of the correct use.
 - You should test the sound reception every time you turn on the unit or move it to a new location.
 - Periodically examine all components for damage.
 - There is a very low risk of fire hazard when using certain electronic devices, such as baby monitors, cordless telephones, etc. To protect your privacy, make sure the product has never been used before purchase, test the baby monitor periodically by powering off and then powering on the units, and power off the baby monitor if you will not use it for some time.
 - Children should be supervised to ensure that they do not play with the product.
 - The product is not intended for use by persons (including children) with reduced physical, sensory or mental capabilities, or lack of experience and knowledge, unless they have been given instruction concerning use of the appliance by a person responsible for their safety.
- SAVE THESE INSTRUCTIONS**
- Use and store the product at a temperature between 32°F and 104°F.
 - Do not expose the product to extreme cold, heat or direct sunlight. Do not put the product close to a heating source.
 - Batteries should not be exposed to excessive heat such as bright sunlight or fire.
 - Warning—Strangulation Hazard—Children have STRANDED IN CORDS. Keep this cord out of the reach of children (more than 3 ft (0.91 m) away). Do not remove this tag.
 - Never place the baby unit(s) inside the baby's crib or cot or playpen. Move the baby unit(s) or plug it into a wall outlet.
 - Other electronic products may cause interference with your baby monitor. If you are using other electronic devices as possible wireless routers, cellular telephones, intercoms, room monitors, televisions, personal computers, kitchen appliances and other electronic devices.
- Precautions for users of implanted cardiac pacemakers**
- Cardiac pacemakers applies only to digital cordless devices.
 - Wireless Technology Research, LLC (WTR), an independent research entity, has conducted a multi-disciplinary evaluation of the interference between wireless devices and implanted cardiac pacemakers. Supported by the U.S. Food and Drug Administration, WTR's recommendations to physicians are:
- Pacemaker patients**
- Should keep wireless devices at least six inches from the pacemaker.
 - Should NOT place wireless devices directly over the pacemaker, such as in a breast pocket, when it is turned on.
- WTR's evaluation did not identify any risk to bystanders with pacemakers from using wireless devices.
- Electromagnetic Fields (EMF)**
- This Vtech product complies with all standards regarding electromagnetic fields (EMF). If handled properly and according to the instructions, the user's manual, the product is safe to be used based on scientific evidence available today.

WHAT'S IN THE BOX



1 CONNECT THE BABY MONITOR

- NOTES**
- The rechargeable battery in the parent unit is built-in.
 - Use only the power adapters supplied with this product.
 - Make sure the baby monitor is not connected to a switch-controlled electric outlet.
 - Connect the power adapters in a vertical or floor mount position only. The adapters' prongs are not designed to hold the weight of baby monitor, so do not connect them to any ceiling, under-the-table, or cabinet outlets. Otherwise, the adapters may not properly connect to the outlets.
 - Make sure the parent unit, the baby units and the power adapter cords are out of reach of children.
- Slide the ON/OFF switch to power on or off your baby unit.
 - Press and hold POWER to power on or off your parent unit.

1 CONNECT THE BABY MONITOR (CONT'D)

Charge the parent unit battery
When you have connected and turned on the parent unit, the battery will be charged automatically.

NOTES

- Before using the baby monitor for the first time, charge the parent unit battery for 12 hours. When the parent unit battery is fully charged, the battery icon becomes solid.
- It takes longer to charge the battery when the parent unit is turned on. To shorten the charging time, turn the parent unit off while charging.
- The standby time varies depending on the sensitivity level you set, your actual use and the age of the battery.

The battery icon indicates the battery status (see the following table).

BATTERY INDICATORS	BATTERY STATUS	ACTION
The screen displays	The battery has very little power and can only be used for a short time.	Charge without interruption (about 30 minutes).
The battery icon becomes solid	The battery is fully charged.	To keep the battery charged, connect the unit to AC power when not in use.

3 POSITIONING THE BABY MONITOR

CAUTION

- Keep the baby unit out of the reach of your baby. Never place or mount the baby unit inside the baby's crib or playpen.

- Place the baby unit at least 3 ft (91 cm) away from the parent unit.
- Place the baby unit at least 3 ft (91 cm) away from the parent unit.
- Place the baby unit at least 3 ft (91 cm) away from the parent unit.
- Place the baby unit at least 3 ft (91 cm) away from the parent unit.

CAUTION

- The default volume of your parent unit is level 3, and the maximum volume is level 5. If you experience high-pitched screaming noise from your baby monitor while positioning:
 - Make sure your baby unit and parent unit are more than 3 feet (1 meter) apart, OR
 - Turn down the volume of your parent unit.

NOTE

- To avoid interference from other electronic devices, place your baby monitor at least 3 feet (1 meter) away from devices such as wireless routers, microwaves, cell phones and computers.

2 POWER ON OR OFF THE BABY MONITOR

- Slide the ON/OFF switch to power on or off your baby unit.
- Press and hold POWER to power on or off your parent unit.

4 STATUS CHECK

Once you power on both your baby unit and parent unit, your parent unit displays image from the baby unit, and the LINK LED light turns on.

The baby unit's POWER LED light turns on.

TECHNICAL SPECIFICATIONS

Frequency control	CPSYS controlled PLL synthesizer
Transmit frequency	Baby unit: 2405 - 2475 MHz
Channels	32
LCD	3.5" Color LCD (MONOCOLOR TFT)
Maximum effective range	Parent unit: 3.6V, 2600mAh, 9.36Wh. Baby unit: 3.6V, 2600mAh, 9.36Wh. Model: VT05EUS0500.
Power requirements	Parent unit: 5V DC 1A. Baby unit: 5V DC 1A. Model: VT05EUS0500.

BASIC OPERATION - PARENT UNIT

Use the menu

Press **MENU** to enter the menu, choose a menu item, or save a setting. You can use the parent unit for advanced settings or operations, such as to play or stop the baby unit lullaby, or to adjust the baby unit sound sensitivity.

While in the menu:

- Press **RIGHT** or **LEFT** to scroll among the menu options.
- Press **ENTER** to select an item, or to save a setting.
- Press **UP** or **DOWN** to scroll among the sub-menu options, or to adjust a setting.
- Press **BACK** to return to the previous menu options without changing the current setting.
- Press **TALK** to return to live video.

Talk to your baby unit

Press and hold **TALK** and speak to your parent unit. Your voice is transmitted to the baby unit. Release **TALK** when finish talking and hear your baby again.

Turn off the screen

Press **POWER** to put the monitor display to sleep. The screen will be switched off, and you will still hear sounds from the baby unit.

TIP

- Press any key on the parent unit to turn the screen on again.

OVERVIEW - PARENT UNIT

Adjust parent unit volume

Press **VOL+ / VOL-** to adjust your parent unit speaker volume.

Zoom

- Press **MENU** to enter the menu.
- Press **RIGHT** to select **Zoom**, then press **ENTER** to confirm.
- Press **UP** or **DOWN** to choose either **2X** or **4X**, depending on how many times you want to zoom in, then press **ENTER** to confirm.

Overview - Parent Unit

- Antenna
- 3-level sound indicator light
- Battery LED light
- LINK LED light
- Arrow keys < >
- MENU/SELECT
- RETURN/TALK
- LCD ON/OFF/POWER key
- Speaker
- VOL+ / VOL-
- Power/jack
- RESET
- Speaker

OVERVIEW - BABY UNIT

Overview - Baby Unit

- Light sensor
- Camera
- Infrared LEDs
- Microphone
- POWER LED light
- ON/OFF switch
- Speaker
- Antenna
- Power/jack
- PAIR/RESET key
- PAIR/RESET key

NEED HELP?

For operations and guides to help you use your video monitor, and for the latest information and support, check out our online help topics and online FAQs.

Use your smartphone or mobile device to access our online help.

- Go to <https://help.vtechphones.com/vm924> or <https://help.vtechphones.com/vm924-2>
- Scan the QR code on the right. Launch the camera app or QR code scanner app on your smartphone or tablet. Hold the device's camera up to the QR code and frame it. Tap the notification to be redirected to the online help page.
- If the QR code is not clearly displayed, adjust your camera's focus by moving your device closer or further away until it is clear.

You can also call our Customer Support at 1 (800) 595-9511 (in US) or 1 (800) 267-7377 (in Canada) for help.

PARENT UNIT ICONS

Main menu icons

Main menu	Sub-menu
Brightness	Adjust the parent unit's LCD brightness.
Lullaby	Play/Stop lullaby <ul style="list-style-type: none"> Select one of the soothing sounds, or white noise. Select one of the five melodies. Play all melodies.
60min 45min 30min 15min	Set timer to stop playing the selected melody or soothing sound.
VOX (Voice Activated Alert) Settings	VOX sound sensitivity level <ul style="list-style-type: none"> You can adjust VOX sensitivity levels to activate the parent unit when the baby unit detects sounds that exceed a certain volume. See Sound sensitivity and sound activation section.

Alert Tone Settings

- Set the parent unit to beep when the battery is low.
- Set the parent unit to beep when the link between the parent unit and the baby unit is lost.
- Set the confirmation tone on or off when selecting an option in the menu.
- Set the parent unit to beep when the baby unit detects sounds while in Split mode. (For pairing with VM924-2 only).

Temperature

ON/OFF

- Turn on/off temperature alert tone.
- Set the parent unit to beep whenever the room temperature detected by the baby unit falls outside of the set temperature range.
- Set the minimum temperature.
- Set the maximum temperature.
- Set temperature display in Fahrenheit (°F) or Celsius (°C).

Baby Unit Settings

- Baby unit speaker volume**
 - Adjust the baby unit's speaker volume.
- Zoom in.**

Monitoring Mode (For pairing with VM924-2 only)

- 1 2** - **Single CAM mode**
The screen displays images only from the selected baby unit in full screen.
- Split mode**
The screen displays images from all the baby unit displays at the same time in split view.
- Parrot mode**
The screen displays a single cam view that transitions to a different baby unit every 10 seconds.

