

Go to [www.vtechphones.com](http://www.vtechphones.com) to register your product for enhanced warranty support and the latest Vtech product news.

RM5756HD  
RM5756HD-2  
5" Smart Wi-Fi 1080p  
Video Monitor



For more support information  
#vtechsupport

vtech®  
Quick start guide

Congratulations

on purchasing your new Vtech product.  
Before using this baby monitor, please read the **Important safety instructions**.

### What does HD Video Monitor do?

Vtech 5" Smart Wi-Fi 1080p Video Monitor allows you to stay close to your baby when you are on the move or away. This monitor is Wi-Fi enabled, using your home wireless network to stream live video and audio through the 1080p baby unit and 5-inch colour screen parent unit. It allows you to maintain a constant connection to your baby.

You can also monitor from your smartphones or mobile tablet.  
Vtech 5" Smart Wi-Fi 1080p Video Monitor uses **MyTech Baby Pro** app to let you instantly see and hear what's happening with your baby from anywhere in the world. The app can be downloaded from the App Store or the Google Play™ Store.

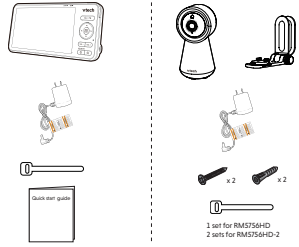
## IMPORTANT SAFETY INSTRUCTIONS

When using your equipment, basic safety precautions should always be followed to reduce the risk of fire, electric shock and injury, including the following:  
1. Follow all warnings and instructions marked on the product.  
2. **CAUTION:** Do not touch the baby unit at a height above 8.5 feet.  
3. Do not use the product if it is damaged or if the power cord is frayed or damaged.  
4. This product is intended as an aid. It is not a substitute for responsible and proper adult supervision and should not be used as such.  
5. This product is not intended for use as a medical monitor.  
6. Do not use the product near water. For example, near to a bath tub, swimming pool or shower.  
7. Do not use the product near a fire or other heat source.  
8. Do not use the product in a wet or damp area.  
9. Do not use the product in a room with a high level of humidity or steam, such as a bathroom or a kitchen.  
10. Do not use the product in a room with a high level of humidity or steam, such as a bathroom or a kitchen.  
11. Do not use the product in a room with a high level of humidity or steam, such as a bathroom or a kitchen.  
12. Do not use the product in a room with a high level of humidity or steam, such as a bathroom or a kitchen.

1. To reduce the risk of electric shock, do not disassemble this product. Do take to an authorized service facility. Opening or removing parts of the product other than specified locations may void the warranty and create a fire or electric shock hazard.
2. Do not use the product if it is damaged or if the power cord is frayed or damaged.
3. Do not use the product in a room with a high level of humidity or steam, such as a bathroom or a kitchen.
4. Do not use the product in a room with a high level of humidity or steam, such as a bathroom or a kitchen.
5. Do not use the product in a room with a high level of humidity or steam, such as a bathroom or a kitchen.
6. Do not use the product in a room with a high level of humidity or steam, such as a bathroom or a kitchen.
7. Do not use the product in a room with a high level of humidity or steam, such as a bathroom or a kitchen.
8. Do not use the product in a room with a high level of humidity or steam, such as a bathroom or a kitchen.
9. Do not use the product in a room with a high level of humidity or steam, such as a bathroom or a kitchen.
10. Do not use the product in a room with a high level of humidity or steam, such as a bathroom or a kitchen.
11. Do not use the product in a room with a high level of humidity or steam, such as a bathroom or a kitchen.
12. Do not use the product in a room with a high level of humidity or steam, such as a bathroom or a kitchen.

## WHAT'S IN THE BOX

Your baby monitor package contains the following items. Save your sales receipt and original packaging in the event warranty service is necessary.



### Requirements

For mobile access:	
MyTech Baby Pro mobile app	
Network	Wi-Fi
Wi-Fi router	2.4GHz 802.11 b/g/n
Internet connection	1.5 Mbps @ 720p or 2.5 Mbps @1080p upload bandwidth per baby unit

## DOWNLOAD APP FOR MOBILE ACCESS

1. Download the free **MyTech Baby Pro** mobile app and install it to a mobile device, then use your mobile device and the mobile app to monitor your baby remotely.  
1. Press **MENU/SELECT** when the parent unit is idle.  
2. Go to **Settings > Connect Mobile Phone**.  
3. Scan the QR code in the parent unit to download the app into your mobile device if you have not installed the app yet.  
4. Follow the instructions in the mobile app to set up and pair your baby unit to the mobile app.

Alternatively, you can download the mobile app from the App Store or Google Play store.

- Install MyTech Baby Pro mobile app
1. Browse the App Store or the Google Play store.
  2. Search for the mobile app with the keyword "mytech baby pro".
  3. Download and install the **MyTech Baby Pro** mobile app to your mobile device.

OR

Scan the QR codes on the right to get the app.

**NOTE**  
Make sure your mobile device meets the minimum requirement for the mobile app.

**Minimum requirement**  
The mobile app is compatible with:  
• Android™ 6.0 or later; and  
• iOS 12 or later.

2. After installing the mobile app, follow the instructions in the mobile app and parent unit to set up and pair your baby unit.

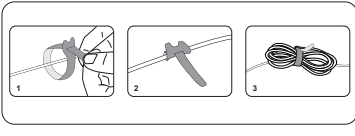
- In your mobile device:**
1. Tap **+** to run the mobile app in your mobile device, and then create a user account.
  2. We recommend that you use common web services, such as Google Gmail for registration of your user account. Check your email (and Spam folder), and activate your new camera account via the email link, then sign in to your account.
  3. Follow the instructions in the mobile app to pair the camera. Tap **+** to add camera in the mobile app to get started.

### RECYCLING INFORMATION

This product is made from recycled materials. It is designed to be recycled. Please do not dispose of this product in the trash. Please recycle this product in the appropriate recycling bin. For more information, please visit [www.vtech.com/recycling](http://www.vtech.com/recycling).

Product of China. © 2019 Vtech Communications, Inc. All rights reserved. Vtech Communications, Inc. is not responsible for any damage or loss caused by the use of this product.

## CABLE MANAGEMENT



## PROTECT YOUR PRIVACY AND ONLINE SECURITY

Vtech understands the importance of protecting your privacy and online security. We have implemented a number of security features to help protect your privacy and online security. These features include:  
• **Secure connection:** The parent unit and baby unit connect to each other using a secure connection. This connection is encrypted using the WPA2-PSK with AES encryption to protect your privacy and online security.  
• **Secure connection:** The parent unit and baby unit connect to each other using a secure connection. This connection is encrypted using the WPA2-PSK with AES encryption to protect your privacy and online security.  
• **Secure connection:** The parent unit and baby unit connect to each other using a secure connection. This connection is encrypted using the WPA2-PSK with AES encryption to protect your privacy and online security.  
• **Secure connection:** The parent unit and baby unit connect to each other using a secure connection. This connection is encrypted using the WPA2-PSK with AES encryption to protect your privacy and online security.

## CONNECT, CHARGE AND POWER ON THE BABY MONITOR

### Connect the baby monitor

**NOTES**

- The rechargeable battery in the parent unit is built-in.
- Use only the power adapters supplied with this product.
- Make sure the parent unit and the baby unit are not connected to the switch-controlled electric outlets.
- Connect the power adapters in a vertical or floor mount position only. The adapter groups are not designed to hold the weight of the parent unit and the baby unit, so do not connect them to any cable, under-the-table, or cabinet outlets. Otherwise, the adapter may not properly connect to the outlets.
- Make sure the parent unit, the baby unit and the power adapter cords are out of reach of children.

### Charge the parent unit battery before use

The parent unit runs on rechargeable battery or AC power. To continuously monitor your baby, charge the parent unit connected to AC power.

**NOTES**

- Before using the baby monitor for the first time, charge the parent unit battery for 12 hours. When the parent unit battery is fully charged, the parent unit beeps once.
- The standby time varies depending on your actual use.

After the parent unit is fully charged, the parent unit welcome screen appears.

BATTERY INDICATORS	BATTERY STATUS	ACTION
	The battery has very little charge and may be used for only a short time.	Charge without interruption (about 30 minutes).
	The battery is fully charged.	To keep the battery charged, connect it to AC power when in use.

**Slide the switch to ON to power on your baby unit.**

**NOTES**

- After powering up, the baby unit Status LED will turn on and then turn off after a short time.
- The Status LED is set to OFF by default. If you want to leave the LED on, press **MENU**, then go to **Settings > LED Light > On**.

**NOTE:**  
Camera lens and surface may get warm during normal operation.

## CHARGE, CHARGE AND POWER ON THE BABY MONITOR

### Charge the parent unit battery before use

The parent unit runs on rechargeable battery or AC power. To continuously monitor your baby, charge the parent unit connected to AC power.

**NOTES**

- Before using the baby monitor for the first time, charge the parent unit battery for 12 hours. When the parent unit battery is fully charged, the parent unit beeps once.
- The standby time varies depending on your actual use.

After the parent unit is fully charged, the parent unit welcome screen appears.

BATTERY INDICATORS	BATTERY STATUS	ACTION
	The battery has very little charge and may be used for only a short time.	Charge without interruption (about 30 minutes).
	The battery is fully charged.	To keep the battery charged, connect it to AC power when in use.

**Slide the switch to ON to power on your baby unit.**

**NOTES**

- After powering up, the baby unit Status LED will turn on and then turn off after a short time.
- The Status LED is set to OFF by default. If you want to leave the LED on, press **MENU**, then go to **Settings > LED Light > On**.

**NOTE:**  
Camera lens and surface may get warm during normal operation.

## PARENT UNIT ICONS

### Main Menu Options

**Monitoring mode** (For RM5756HD-2 only)

- View baby units in Single mode.
- View baby units in Panel mode.
- View baby units in Split screen.

**Night Light**

- Turn on or turn off night light.
- Select a night light color.
- Adjust night light brightness.
- Set a night light timer.

**Melodies and soothing sounds**

- Select play all melodies, or play one of the five melodies and five soothing sounds.
- You can also set the timer to stop playing after 15, 30 or 60 minutes, or playing non-stop.

**Alerts - Sound, motion and temperature**

- Select the sound and motion sensitivity level.
- Turn on/off sound and motion detection alerts.
- Select maximum and minimum temperature for alert range.
- Turn on/off temperature alert.
- Turn on/off Auto Wake Up function.

**Parent unit settings**

- Adjust parent unit screen brightness.
- Adjust Low Battery Alert tone.
- Adjust Low Link Alert Tone.
- Turn on/off Dim mode.

**Baby unit settings**

- Turn on/off Night Vision.
- Turn on/off baby unit Status LED.
- Adjust baby unit speaker volume.

### Main Menu Options

**General settings**

- Configure Wi-Fi.
  - Change Wi-Fi Network
  - Selection Connection Mode
  - Connection Status
  - Connect mobile phones.
  - Reset Settings to factory default.
  - Software Update.

**Status icons**

- Direct mode: Parent unit, baby unit 1 and baby unit 2 (For RM5756HD-2 only) are connected to home Wi-Fi network.
- Wi-Fi Router mode: Parent unit, baby unit 1 and baby unit 2 (For RM5756HD-2 only) are connected to home Wi-Fi network.
- Baby unit 1 and 2 are being viewed in Panel mode (For RM5756HD-2 only).
- Baby unit 1 and 2 are being viewed in Split mode (For RM5756HD-2 only).
- Night vision is turned on.
- Motion detection alert is turned on.
- Sound detection alert is turned on.
- Melodies and soothing sounds are playing.
- Night light is turned on.
- Auto-night light brightness is activated.
- Temperature alert is turned on.

Parent unit is muted.

70°F  
Temperature is lower than 68°F  
Temperature is within 68°F and 75°F  
Temperature is higher than 75°F

Battery indicator.

## AUTO SOFTWARE AND FIRMWARE UPDATE

To ensure that your baby monitor is always at its best performance, the parent unit will prompt you to update its software and the baby unit firmware when there are new versions available.

- Follow the instructions on the parent unit screen to update your baby monitor. If you skip the updates, the parent unit and baby unit will be updated automatically when the parent unit is powered off, and then powered on again.
- Check if your device is running on the latest software or to update your device software, go to **Settings > Software Update**.

### Connect your baby monitor to Wi-Fi

- You must connect your video monitor to your secured home Wi-Fi network in order to receive the latest software and firmware updates. To set it up, go to **Settings > Configure Wi-Fi**.

## NIGHT LIGHT

You can control the night light remotely on the parent unit or directly on the baby unit.

**On the parent unit:**

1. Press **MENU**.
2. Press **Left Arrow** to scroll to **Night Light** menu, then press **MENU** or **Right Arrow** to enter.
3. Press **Left Arrow** to choose below options:

- Turn on/off night light
- Change night light color
- Adjust night light brightness
- Set night light timer

**On the baby unit:**

- **Night Light Control Key**  
Single Tap: Turn on/off  
Tap and hold: Adjust night light brightness

### TECHNICAL SPECIFICATIONS

Model	RM5756HD
Dimensions (Parent Unit)	187mm (H) x 146mm (W) x 125mm (D)
Dimensions (Baby Unit)	110mm (H) x 65mm (W) x 65mm (D)
Weight (Parent Unit)	1.2kg
Weight (Baby Unit)	0.15kg
Power Requirement	AC 100-240V, 50/60Hz, 1.5A
Frequency	2.4GHz
Channels	13
Transmission Frequency	868MHz, 900MHz, 920MHz, 940MHz, 960MHz, 980MHz, 1000MHz, 1020MHz, 1040MHz, 1060MHz, 1080MHz, 1100MHz, 1120MHz, 1140MHz, 1160MHz, 1180MHz, 1200MHz, 1220MHz, 1240MHz, 1260MHz, 1280MHz, 1300MHz, 1320MHz, 1340MHz, 1360MHz, 1380MHz, 1400MHz, 1420MHz, 1440MHz, 1460MHz, 1480MHz, 1500MHz
LED	Yes
Camera	Yes
Microphone	Yes
Speaker	Yes
Temperature Sensor	Yes
Motion Detector	Yes
Sound Detector	Yes
Auto Wake Up	Yes
Auto Night Light	Yes
Auto Software Update	Yes
Auto Firmware Update	Yes

### BASIC OPERATION

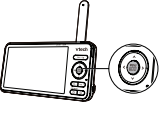
After powering up your baby monitor, the parent unit streams live video in direct mode. We recommend you follow the instructions on screen to set up home Wi-Fi network with your monitor for functionality enhancements and mobile access. See **Auto software and firmware update and Download app for mobile access** in this Quick Start Guide.

#### Use the menu

Press **MENU** on the parent unit or enter the main menu to enter a menu item, or save a setting. You can use the parent unit menu for advanced settings or operations, such as play or stop the baby unit lullaby, or adjust the baby unit sound sensitivity.

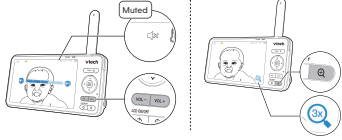
#### While in the menu:

- Press **CARD** to scroll through the menu options.
- Press **SELECT** to select an item.
- Press **TALK** to return to the live video.
- Press **Q** to go to the **Help & Info page**.



#### Adjust speaker volume

Press **VOL +** / **VOL -** to adjust the parent unit speaker volume level received from the baby unit.



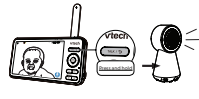
#### Zoom

Press **Z** to zoom in or out in a fixed zoom sequence. **Z** indicates the image is magnified 3 times.

#### Talk to your baby via the baby unit

- Press and hold the **TALK** key.

When the **I** icon displays on screen, speak to your parent unit. Your voice is transmitted to the baby unit. When finished talking, release the **TALK** key to hear your baby again.



#### Turn on/off baby unit's status LED

Turn on or turn off the baby unit status LED indicator. Go to:



**Q** = Status LED.

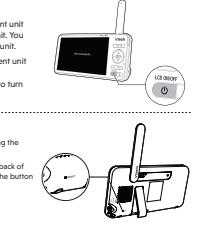
#### Turn on/off the parent unit screen

You can turn on or turn off the parent unit screen without powering off the baby unit. You will still hear sounds from the baby unit.

- Press **Q** **LED ON/OFF** on the parent unit to turn off the screen.
- Press any key on the parent unit to turn the screen on again.

#### Tip

You can reset the parent unit by pressing the **RESET** key at the back of the unit. Insert a pin into the **RESET** hole on the back of the parent unit, and then gently press the button inside.



### TEST THE SOUND LEVEL AND POSITION THE BABY MONITOR

#### Testing the sound level of the baby monitor

##### NOTE

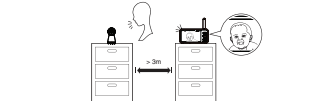
- This baby monitor is intended as an aid. It is not a substitute for proper adult supervision, and should not be used as such.

##### CAUTION

- For testing purposes, make sure the parent unit is more than 3 feet away from the baby unit. If you hear any high-pitched noise from the parent unit, move the parent unit further until the noise stops. You can also press **VOL +** on the parent unit to lower or mute the noise.

##### TIP

- Increase the parent unit speaker volume if you cannot hear the sounds transmitted from the baby unit.

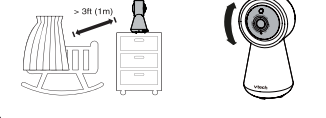


#### Positioning the baby monitor

##### CAUTION

- Keep the baby unit out of the reach of your baby. Never place or mount the baby unit inside the baby cot or playpen.

- Place the baby unit more than 3 feet away from your baby.
- Adjust the angle of the baby unit to aim at your baby.

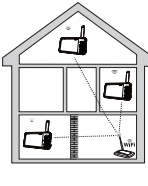


### TEST THE LOCATION FOR THE BABY UNIT

If you plan to install your baby unit in a designated location, use your home Wi-Fi network to connect your video monitor. You need to test which of your selected monitoring areas within the house have good Wi-Fi signal strength. After you have powered on your parent unit, you can use your parent unit Wi-Fi signal strength indicator to assist in checking. Once you have identified the location, you can install your baby unit. Adjust the distance or direction between your baby unit and the Wi-Fi router if needed.

##### TIP

- Depending on surroundings and obstructing factors, such as the effect distance and internal walls, there may be a change in Wi-Fi signal strength. To improve the Wi-Fi signal strength, adjust the distance or direction of your parent unit. Check with your parent unit again.

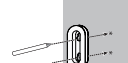


### MOUNT THE BABY UNIT (OPTIONAL)

##### NOTES

- Check for obstructions and ensure angle of the baby unit before drilling the holes.
- The type of screws and plugs you need depend on the composition of the wall. You may need to purchase the screws and plugs separately to mount your baby unit.

- Place the wall mount bracket on a wall and then use a pencil to mark two holes in parallel. Remove the wall mount bracket and drill two holes in the wall (5.5mm drill bit).



- If you drill the holes into a stud, you should also insert an object other than a stud, insert the plug into the holes. Try gently on the ends with a hammer until the wall plugs are flush with the wall.

### FOR RM5756HD-2 ONLY

### MONITORING MODES

When more than one baby unit is paired to the parent unit, you can choose to view different baby units in three monitoring modes. Learn more about each below.

- Single Mode:** The screen displays images only from the selected baby unit in full screen.
- Split Mode:** The screen displays images from all paired baby units at the same time in split view.
- Patrol Mode:** The screen displays a single cam view that transitions to a different baby unit every 10 seconds.

- #### Change the monitoring mode:
- Press **MENU** when the parent unit is idle.
  - Press **MENU** or **V** to enter **Monitoring Mode** menu.
  - Press **C** to choose between **Single**, **Split**, and **Patrol** monitoring mode options. Press **SELECT** to confirm.

### NEED HELP?

Driven by system updates, the software, online help topics, and online FAQs will be updated periodically. For operations and guides to help you using your HD video monitor, and for latest information and support, go and check the online help topics and online FAQs. Use your smartphone or mobile device to access our online help. Go to <https://help.vtechphones.com/RM5756HD-2> or scan the QR code on the right. Launch the camera app or QR code camera app on your smartphone or tablet. Hold the device's camera up to the QR code on the parent unit. Tap the notification to trigger the redirection of the online help.

- If the QR code is not clearly displayed, adjust your camera's focus by moving your device closer or further away until it's clear.

If you would like to contact us, visit <https://help.vtechphones.com> or scan the QR code. You can also call our Customer Support at 1-844-848-8234 (1-844-848-VECH) in US or 1-888-311-2005 (in Canada) for help.



RM5756HD-2

### HOW THE SYSTEM WORKS

#### Direct mode

The parent unit and the baby unit of your video monitor connect to each other in **Direct mode** by default, which allows you to stream live video right out of the box. **Direct mode** connection lets you stream live video from the parent unit only.



**Tip** You may experience reduced signal strength if your parent unit and baby unit are far apart, or if there are obstructing factors, such as internal walls, between them. Move the parent unit closer to the baby unit to improve the signal strength.

#### Wi-Fi Router mode

To stream live video with better connection, you can also set up your monitor in **Router mode** connection.



**Router mode** uses your home Wi-Fi network to connect the video monitor. It supports streaming live video through the parent unit and myVTech Baby Pro app. Download and install the myVTech Baby Pro mobile app to stream remotely. With the mobile app, your Wi-Fi router (not included) serves as a communicating channel between your baby unit and mobile device, allowing you to monitor and control your baby unit wherever you are. For details, see **Download app for mobile access** section in this quick start guide.

#### Auto mode

With **Auto mode** connection, the parent unit will automatically select the most reliable connection mode (**Direct** or **Wi-Fi**) when connecting to the baby unit's. Mobile app access will not be interrupted in **Auto mode**.

#### NOTES

- When both parent unit and app are viewing the camera simultaneously, the video quality will be optimized to deliver the best possible viewing result.

### GENERAL PRODUCT CARE

- To keep this product working well and looking good, follow these guidelines:
- Avoid placing it near heating appliances and devices that generate electrical noise (for example, motors or fluorescent lamps).
  - DO NOT expose it to direct sunlight or moisture.
  - Avoid dropping the product or treating it roughly.
  - Clean with a soft damp cloth.
  - DO NOT immerse the parent unit and the baby unit in water and do not clean them under the tap.
  - DO NOT use cleaning spray or liquid cleaners.
  - Make sure the parent unit and the baby unit are dry before you connect them to the mains again.
  - Clean the USB charging port of dust, dirt, and lint regularly.

### STORAGE

When you are not going to use the video monitor for some time, store the parent unit, the baby unit and the adapters in a cool and dry place.

### FREQUENTLY ASKED QUESTIONS

- Below are the questions most frequently asked about the video monitor.
- Can I turn the parent unit display screen off but keep hearing sounds from the baby unit?**

Yes, press **LED ON/OFF** on the parent unit to turn off the screen. The parent unit display will also dim automatically after being inactive for some time. In both instances, you will still be able to hear all sounds from the baby unit. Press any key on the parent unit to turn the screen back on.
  - Why is the baby unit not responding normally?**

The following (in the order listed) for a common cause:
    - Disconnect the power to the baby unit.
    - Wait a few minutes before reconnecting power back to the baby unit.
    - Reboot the parent unit.
  - Why is my screen in black and white?**

The baby unit has a light sensor that measures ambient light. When the ambient light is dim, such as during night time or in a dark room, the baby unit activates its infrared LEDs, and displays the camera images in black and white night vision.
  - Why does my baby unit show offline?**

The baby unit may have lost connection to the Wi-Fi router. Check your network and router settings.
  - Other electronic products may cause interference with your baby unit. Try installing your baby unit far away from these electronic devices as possible.**
  - Why can't I hear a sound? Why can't I hear my baby crying?**

The parent unit speaker volume may be too low. Press **VOL +** on the parent unit to increase the volume.

You may have set a low sound sensitivity level. Set the sound sensitivity to a higher level. For details, go to [www.vtechphones.com](https://www.vtechphones.com) for online help topics.

### THE RBRC SEAL

The RBRC Seal on the lithium-ion battery indicates that VTech Communications, Inc. is voluntarily participating in an industry program to reduce and recycle these batteries at the end of their useful life, when taken out of service within the United States and Canada. The program provides a convenient alternative to placing used lithium-ion batteries into a trash can or recycling area, which may be illegal in your area.

- VTech's participation makes it easy for you to drop off your spent product to local recycling and participate in the program of an authorized collection site. Please call **1-800-4-BATTERY** for information on lithium battery recycling and disposal of other electronic waste. VTech's involvement in this program is a part of its commitment to protecting our environment and conserving natural resources.
- The RBRC Seal and **1-800-4-BATTERY** are registered trademarks of Call2Recycle, Inc.
- 1. Lithium-ion batteries are not allowed to be thrown into regular trash.
  - 2. Lithium-ion batteries can be recycled at many locations such as electronics stores, home improvement stores, and some hardware stores.
  - 3. Lithium-ion batteries should not be recycled at the same location as other types of batteries.
  - 4. Do not crush, pierce, or otherwise damage a lithium-ion battery. Do not attempt to recharge, repair, or modify a lithium-ion battery.
  - 5. Do not dispose of a lithium-ion battery in a fire.
  - 6. Do not dispose of a lithium-ion battery in a body of water.
  - 7. Do not dispose of a lithium-ion battery in a landfill.
- RECycling** (RBRC) is the industry's standard for recycling lithium-ion batteries. The RBRC Seal is the industry's standard for recycling lithium-ion batteries.
- For more information, visit [www.call2recycle.com](http://www.call2recycle.com).

### CAIFORNIA ENERGY COMMISSION BATTERY CHARGING TESTING MODE

This video monitor meets California Energy Commission (CEC) charging regulation for energy consumption. Your video monitor is set to enter the **Charging Testing Mode** when the parent unit is powered off.

The following instructions to install and charge the battery. The CEC battery charging testing mode is activated while charging.

1. Make sure the parent unit is powered off.
2. Make sure the parent unit is fully charged.
3. Make sure the parent unit is in the **Charging Testing Mode**.
4. Make sure the parent unit is in the **Charging Testing Mode**.
5. Make sure the parent unit is in the **Charging Testing Mode**.

### FOR CETL COMPLIANCE ONLY

Un produit qui est de votre marque et/ou d'une bonne conception. Les produits de votre marque peuvent être très utiles et vous apporter beaucoup de plaisir. Cependant, il est important de s'assurer que ces produits sont conçus et fabriqués de manière sûre et respectueuse de l'environnement. Nous nous engageons à faire preuve de responsabilité et à respecter les normes de sécurité et de conformité de l'industrie.

Un produit qui est de votre marque et/ou d'une bonne conception. Les produits de votre marque peuvent être très utiles et vous apporter beaucoup de plaisir. Cependant, il est important de s'assurer que ces produits sont conçus et fabriqués de manière sûre et respectueuse de l'environnement. Nous nous engageons à faire preuve de responsabilité et à respecter les normes de sécurité et de conformité de l'industrie.

Un produit qui est de votre marque et/ou d'une bonne conception. Les produits de votre marque peuvent être très utiles et vous apporter beaucoup de plaisir. Cependant, il est important de s'assurer que ces produits sont conçus et fabriqués de manière sûre et respectueuse de l'environnement. Nous nous engageons à faire preuve de responsabilité et à respecter les normes de sécurité et de conformité de l'industrie.

### CONSUMER INSTRUCTIONS

- Always use the correct temperature.** Do not use the product in temperatures above 40°C (104°F) or below 0°C (32°F).
  - Do not use the product in the rain or in wet conditions.** Do not use the product in the rain or in wet conditions.
  - Do not use the product near water.** Do not use the product near water.
  - Do not use the product near fire.** Do not use the product near fire.
  - Do not use the product near children.** Do not use the product near children.
- ATTENTION - Règles de sécurité :**
- 1. Utilisez toujours la température correcte. Ne pas utiliser le produit à des températures supérieures à 40°C (104°F) ou inférieures à 0°C (32°F).
  - 2. Ne pas utiliser le produit sous la pluie ou dans des conditions humides. Ne pas utiliser le produit sous la pluie ou dans des conditions humides.
  - 3. Ne pas utiliser le produit près de l'eau. Ne pas utiliser le produit près de l'eau.
  - 4. Ne pas utiliser le produit près du feu. Ne pas utiliser le produit près du feu.
  - 5. Ne pas utiliser le produit près des enfants. Ne pas utiliser le produit près des enfants.
- Structurales warranties (United States and Canada):**
- This video monitor is covered by a 3-year limited warranty. The warranty is void if the product is damaged or modified in any way. For details, see the warranty card included with the product.
- Structuras garantías (Estados Unidos y Canadá):**
- Este video monitor está cubierto por una garantía limitada de 3 años. La garantía es nula si el producto se daña o modifica de alguna manera. Para obtener más detalles, consulte la tarjeta de garantía que acompaña al producto.
- Garantia de produto (Brasil):**
- Este video monitor está cubierto por una garantía limitada de 3 años. La garantía es nula si el producto se daña o modifica de alguna manera. Para obtener más detalles, consulte la tarjeta de garantía que acompaña al producto.

### LIMITED WARRANTY

**How do you get warranty service?**

To obtain warranty service in the USA, please visit our website at [www.vtechphones.com](https://www.vtechphones.com) or call 1-800-959-9331. In Canada, go to [www.vtechphones.com](https://www.vtechphones.com) or call 1-800-959-9331.

**What must you return with the Product to get warranty service?**

1. Return the entire original package and contents including the Product to the VTech service location along with a description of the malfunction or difficulty, and
2. include a "void proof of purchase" (see recovery) identifying the Product purchased (Product model) and the date of purchase or receipt.

- How long is the limited warranty period?**
- The limited warranty period for the Product extends for ONE (1) year from the date of purchase. For details, see the warranty card included with the product.
- What is not covered by this limited warranty?**
- This limited warranty does not cover:
- 1. Product that has been subjected to misuse, accident, shipping or other physical damage, improper installation, improper operation or handling, neglect, modification, fire, water or other liquid intrusion or
  - 2. Product that has been damaged due to repair, alteration or modification by anyone other than an authorized service technician.
- What happens if the product is damaged or modified in any way?**
- The limited warranty is void if the product is damaged or modified in any way. For details, see the warranty card included with the product.
- What happens if the product is damaged or modified in any way?**
- The limited warranty is void if the product is damaged or modified in any way. For details, see the warranty card included with the product.

**Please retain your original sales receipt or proof of purchase.**