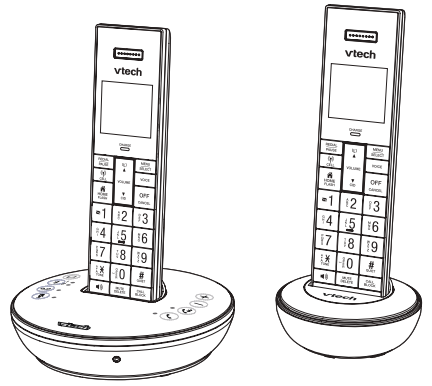


Go to www.vtechphones.com (US) to register your product for enhanced warranty support and latest Vtech product news.

Go to phones.vtechcanada.com (CA) for latest Vtech product news.

LS6381-VS324
LS6381-2-VS324-2
LS6381-3-VS324-3
LS6381-4-VS324-4
LS6381-5-VS324-5

DECT 6.0 cordless telephone with BLUETOOTH® wireless technology



vtech

Scan the QR code for support information



Quick start guide



All rights reserved. © 2021 Vtech Technologies, Inc. All rights reserved. © 2021 Vtech Technologies, Inc. All rights reserved.



The Bluetooth® word mark and logo are owned by Bluetooth SIG, Inc. and any use of such marks by Vtech Holdings Limited is under license. Vtech Holdings Limited is a member of Bluetooth SIG, Inc. and any use of its trademarks and trade names are those of their respective owners.

STAR label indicating it meets the latest energy efficiency guidelines. The ENERGY STAR program (www.energystar.gov) recognizes and encourages the use of products that save energy and help protect our environment. We are proud to mark this product with the ENERGY STAR label indicating it meets the latest energy efficiency guidelines.

The TELECOM logo is a trademark of the Telecommunications Industry Association. Used under license.

Telephone identified with this logo have reduced noise and interference when used with most T-coil equipped hearing aids and hearing loops. The TIA-1083 Compliant logo is a trademark of the Telecommunications Industry Association. Used under license.

Memory: Phonebook: 1000 memory locations; up to 30 digits and 15 characters. Caller ID log: 50 memory locations; up to 24 digits and 15 characters. Call block: 1000 entries

Power requirement: Handset: 2.4V Ni-MH battery; Telephone base: 5V DC @ 1A

Channels: 5; Actual operating range may vary according to environmental conditions at the time of use.

Frequency control: Crystal controlled PLL synthesizer; Transmit frequency: Handset: 1921.536-1928.448 MHz; Telephone base: 1921.536-1928.448 MHz

Technical specifications

IMPORTANT SAFETY INSTRUCTIONS

- When using your telephone equipment, basic safety precautions should always be followed to reduce the risk of fire, electric shock and injury, including the following:
1. Read and understand all instructions.
2. Follow all warnings and instructions marked on the product.
3. Unplug this product from the wall outlet before cleaning. Do not use liquid or aerosol cleaners. Use a damp cloth for cleaning.
4. Do not install the telephone base at a height above 2 meters.
5. Do not use this product near water such as near a bath tub, wash bowl, kitchen sink, laundry tub or a swimming pool, or in a wet basement or shower.
6. Do not place this product on an unstable table, shelf, stand or other unstable surfaces.
7. Avoid placing the telephone system in places with extreme temperature, direct sunlight, or other electrical devices. Protect your phone from moisture, dust, corrosive liquids and fumes.
8. Slots and openings in the back or bottom of the telephone base and handset are provided for ventilation. To protect them from overheating, these openings must not be blocked by placing the product on a soft surface such as a bed, sofa or rug. This product should never be placed near or over a radiator or heat register. This product should not be placed in any area where proper ventilation is not provided.
9. Do not allow anything to rest on the power cord. Do not install this product where the cord may be walked on.
10. Never push objects of any kind into this product through the slots in the telephone base or handset because they may touch dangerous voltage points or create a short circuit. Never spill liquid of any kind on the product.
11. To reduce the risk of electric shock, do not disassemble this product, but take it to an authorized service facility. Opening or removing parts of the telephone base or handset other than those specified access doors may expose you to dangerous voltages or other risks. Incorrect reassembly can cause electric shock when the product is subsequently used.
12. Do not overload wall outlets and extension

- caution: Use only the batteries indicated in this manual. There may be a risk of explosion if a wrong type of battery is used for the handset. Use only the supplied rechargeable batteries or replacement batteries BT16242, BT26242 for the handset. Do not dispose of batteries in a fire. They may explode.
14. Unplug this product from the wall outlet and refer servicing to an authorized service facility under the following conditions:
- When the power supply cord or plug is damaged or frayed.
- If liquid has been spilled on the product.
- If the product has been exposed to rain or water.
- If the product does not operate normally by following the operating instructions. Adjust only those controls that are covered by the operation instructions. Improper adjustment of other controls may result in damage and often requires extensive work by an authorized technician to restore the product to normal operation.
- If the product has been dropped and the telephone base and/or handset has been damaged.
- If the product exhibits a distinct change in performance.
15. Avoid using a telephone (other than cordless) during an electrical storm. There is a remote risk of electric shock from lightning.
16. Do not use the telephone to report a gas leak in the vicinity of the leak. Under certain circumstances, a spark may be created when the adapter is plugged into the power outlet, or when the handset is replaced in its cradle. This is a common event associated with the closing of any electrical circuit. The user should not plug the phone into a power outlet, and should not put a charged handset into the cradle, if the phone is located in an environment containing concentrations of flammable or flame-supporting gases, unless there is adequate ventilation. A spark in such an environment could create a fire or explosion. Such environments might include: medical use of oxygen without adequate ventilation; industrial gases (cleaning solvents; gasoline vapors; etc.); a leak of natural gas, etc.
17. Only put the handset of your telephone next to your ear when it is in normal talk mode.
18. The power adapter is intended to be correctly oriented in a vertical or floor mount position. The prongs are not designed to hold the plug in place if it is plugged into a ceiling, under-the-table or cabinet outlet.
19. For pluggable equipment, the socket-outlet shall be installed near the equipment and shall be easily accessible.
20. CAUTION: Use only the batteries indicated in this manual. There may be a risk of explosion if a wrong type of battery is used for the handset. Use only the supplied rechargeable batteries or replacement batteries BT16242, BT26242 for the handset. Do not dispose of batteries in a fire. They may explode.
- Do not use the battery in following conditions:
 - High or low extreme temperature during use, storage or transportation.
 - Replacement of a battery with an incorrect type that can defeat a safeguard.
 - Disposal of a battery into fire or a hot oven, or mechanically crushing or cutting of a battery, that can result in an explosion or the leakage of flammable liquid or gas.
 - Leaving a battery in an extremely high temperature surrounding environment that can result in an explosion or the leakage of flammable liquid or gas.
 - A battery subjected to extremely low air pressure that can result in an explosion or the leakage of flammable liquid or gas.
21. Use only the adapter included with this product. Incorrect adapter polarity or voltage can seriously damage the product.
SAVE THESE INSTRUCTIONS
- Use only the batteries provided or equivalent. To order a replacement, visit our website at www.vtechphones.com or call 1 (800) 995-9511. In Canada, go to phones.vtechcanada.com or call 1 (800) 267-7377.
- Do not dispose of the battery in a fire. Check with local waste management codes for special disposal instructions. Do not open or mutilate the battery. Released electrolyte is corrosive and may cause burns or injury to the eyes or skin. The electrolyte may be toxic if swallowed.
- Exercise care in handling batteries in order not to create a short circuit with conductive materials.
- Charge the battery provided with this product only in accordance with the instructions and limitations specified in this manual.
Precautions for users of implanted cardiac pacemakers
Cardiac pacemakers (applies only to digital cordless telephones): Wireless Technology Research, LLC (WTR), an independent research entity, led a multidisciplinary evaluation of the interference

between portable wireless telephones and implanted cardiac pacemakers. Supported by the U.S. Food and Drug Administration, WTR recommends to physicians that:

- Should keep wireless telephones at least six inches from the pacemaker.
Should NOT place wireless telephones directly over the pacemaker, such as in a breast pocket, when it is turned ON.
Should use the wireless telephone at the ear opposite the pacemaker.

WTR's evaluation did not identify any risk to bystanders with pacemakers from other persons using wireless telephones.

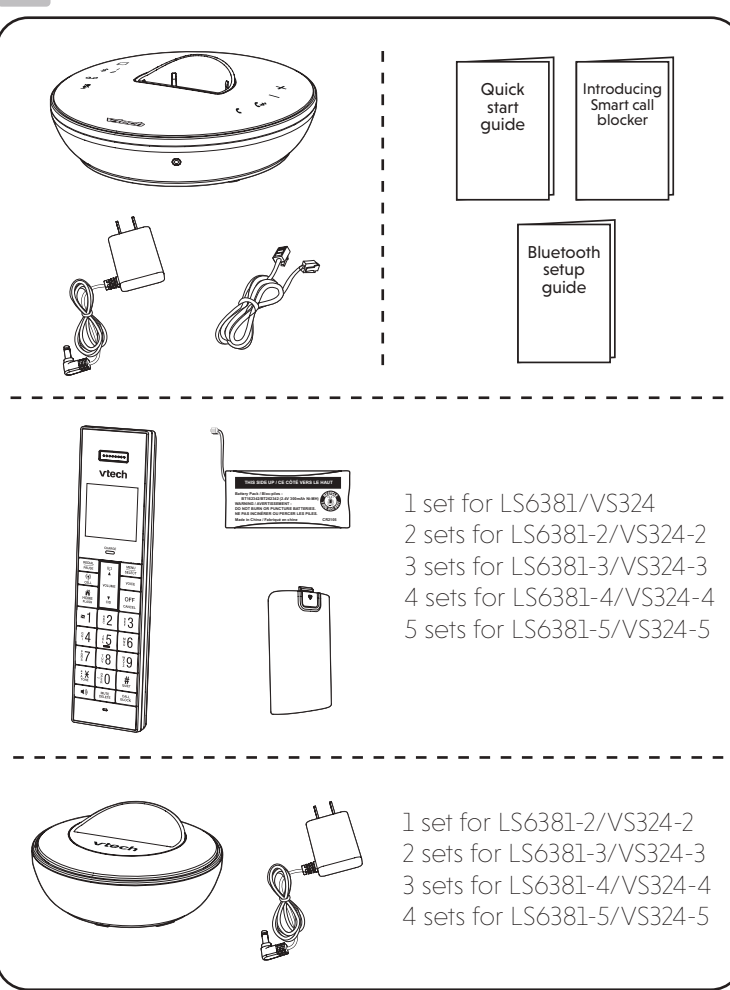
About cordless telephones
- Privacy: The same features that make a cordless telephone convenient create some limitations. Telephone calls are transmitted between the telephone base and the cordless handset by radio waves, so there is a possibility that the cordless telephone conversations could be intercepted by radio receiving equipment within range of the cordless handset. For this reason, you should not think of cordless telephone conversations as being as private as those on corded telephones.
- Electrical power: The telephone base of this cordless telephone must be connected to a working electrical outlet. The electrical outlet should not be controlled by a wall switch. Calls cannot be made from the cordless handset if the telephone base is unplugged, switched off or if the electrical power is interrupted.

Interference: Some cordless telephones operate at frequencies that may cause interference to televisions and VCRs. To minimize or prevent such interference, do not place the telephone base of the cordless telephone near or on top of a TV or VCR. If interference is experienced, moving the cordless telephone farther away from the TV or VCR often reduces or eliminates the interference.

Rechargeable batteries: Exercise care in handling batteries in order not to create a short circuit with conducting material such as rings, bracelets and keys. The battery or conductor may overheat and cause harm. Observe proper polarity between the battery and the battery charger.

Nickel-metal hydride rechargeable batteries: Dispose of these batteries in a safe manner. Do not burn or puncture the battery. Like other batteries of this type, if burned or punctured, they could release caustic material which could cause injury.

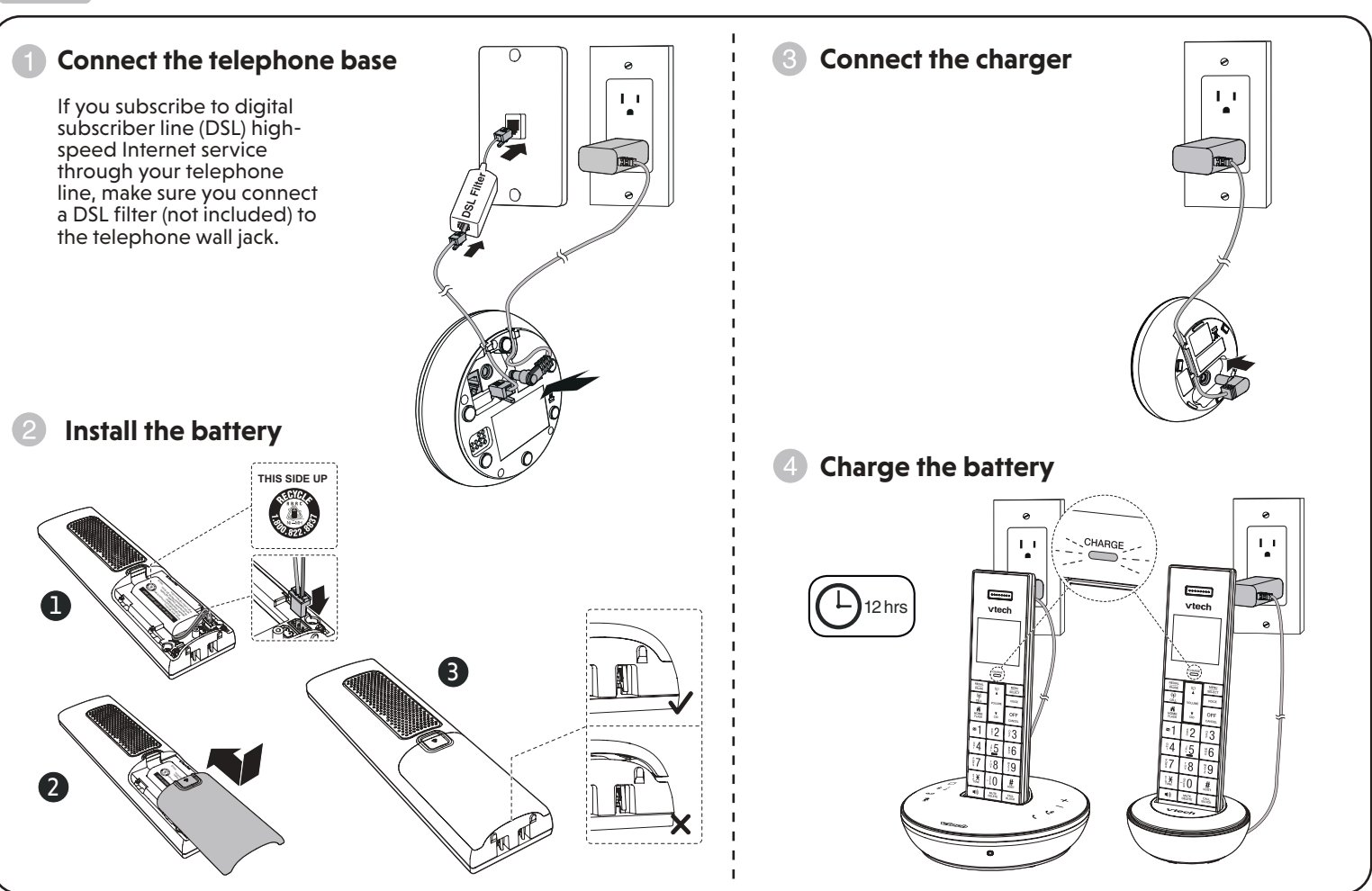
WHAT'S IN THE BOX



1 set for LS6381-VS324
2 sets for LS6381-2/V5324-2
3 sets for LS6381-3/V5324-3
4 sets for LS6381-4/V5324-4
5 sets for LS6381-5/V5324-5

1 set for LS6381-2/V5324-2
2 sets for LS6381-3/V5324-3
3 sets for LS6381-4/V5324-4
4 sets for LS6381-5/V5324-5

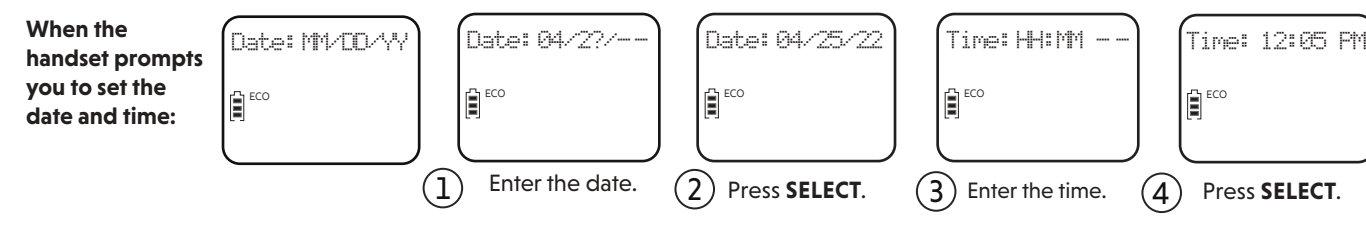
CONNECT AND INSTALL



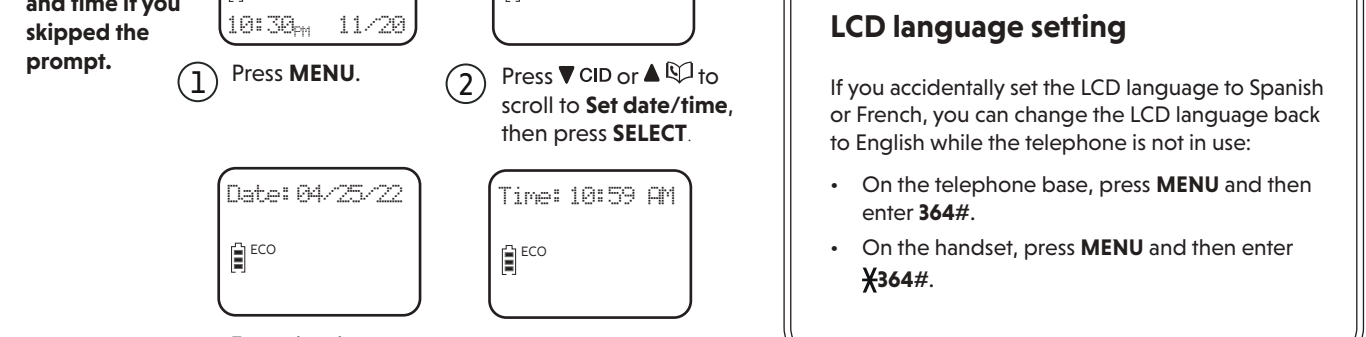
SETUP

After you install your telephone or power returns following a power outage and battery depletion, the handset will prompt you to set the date and time, and to configure the Smart call blocker* and answering system through voice guide.

Date and time
Follow the steps below to set the date and time. For example, if the date is 25 April, 2022, and the time is 12:05 PM:



Follow the following steps to set the date and time if you skipped the prompt.

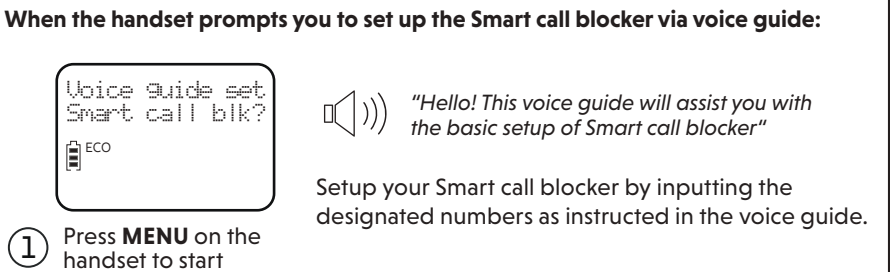


LCD language setting

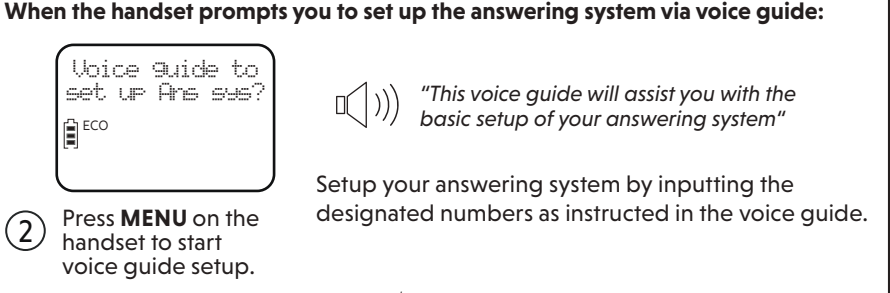
If you accidentally set the LCD language to Spanish or French, you can change the LCD language back to English while the telephone is not in use:
- On the telephone base, press MENU and then enter 364#.
- On the handset, press MENU and then enter X364#.

Voice guide for Smart call blocker / Answering system

After setting the date and time, the handset will prompt if you want to set Smart call blocker, and the answering system. For more details, see Use voice guide to set Smart call blocker in the Introducing Smart call blocker leaflet and Use voice guide to set Answering system in the online help topics.

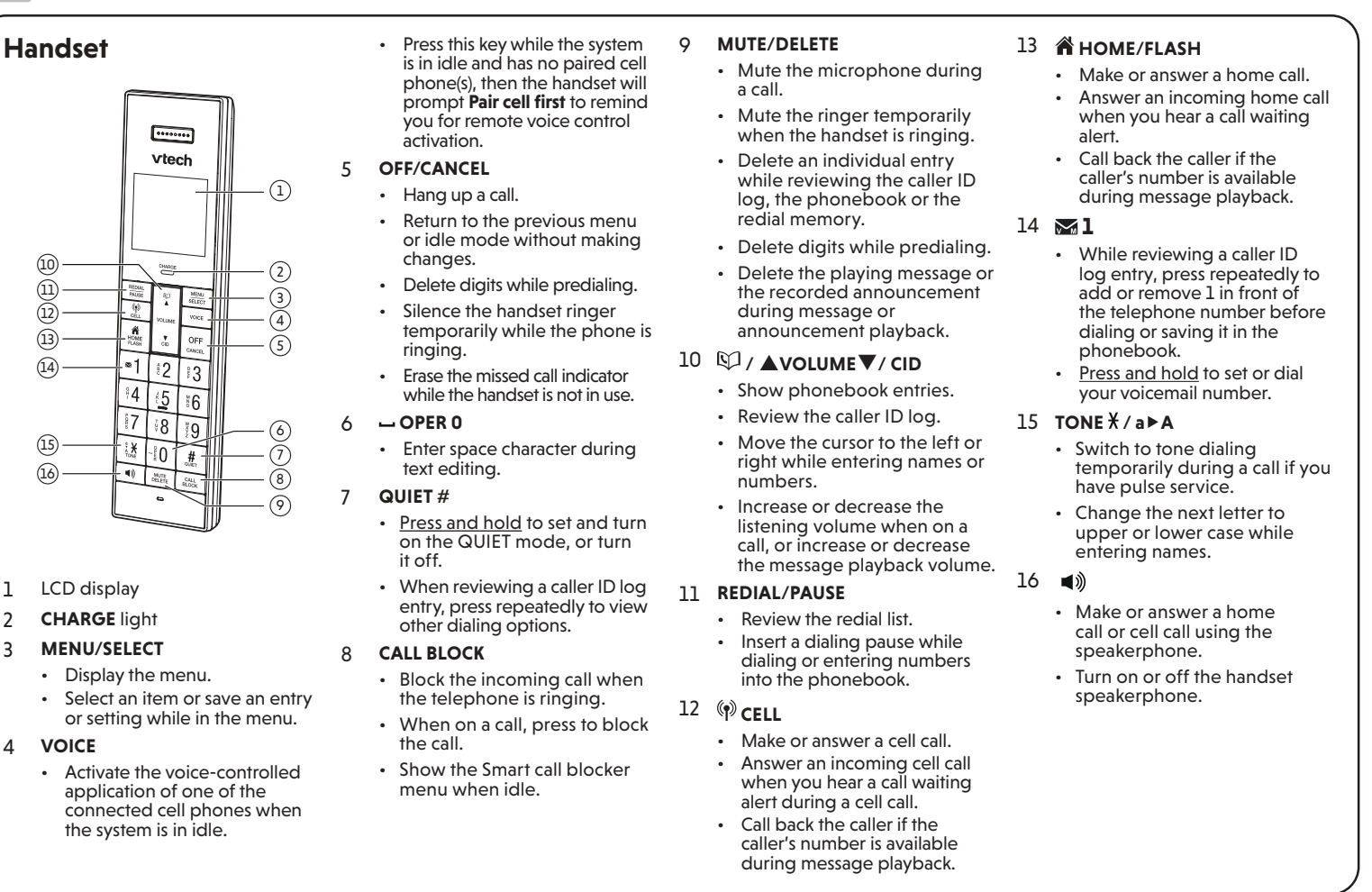


When the handset prompts you to set up the answering system via voice guide:
1. Press MENU on the handset to start voice guide setup.
This feature assists you to do the basic setup of the answering system. You can follow the voice guide to record your own announcement, set the number of rings and the message alert tone.



*Includes licenced Qaltel™ technology. Qaltel™ is a trademark of Truecall Group Limited.

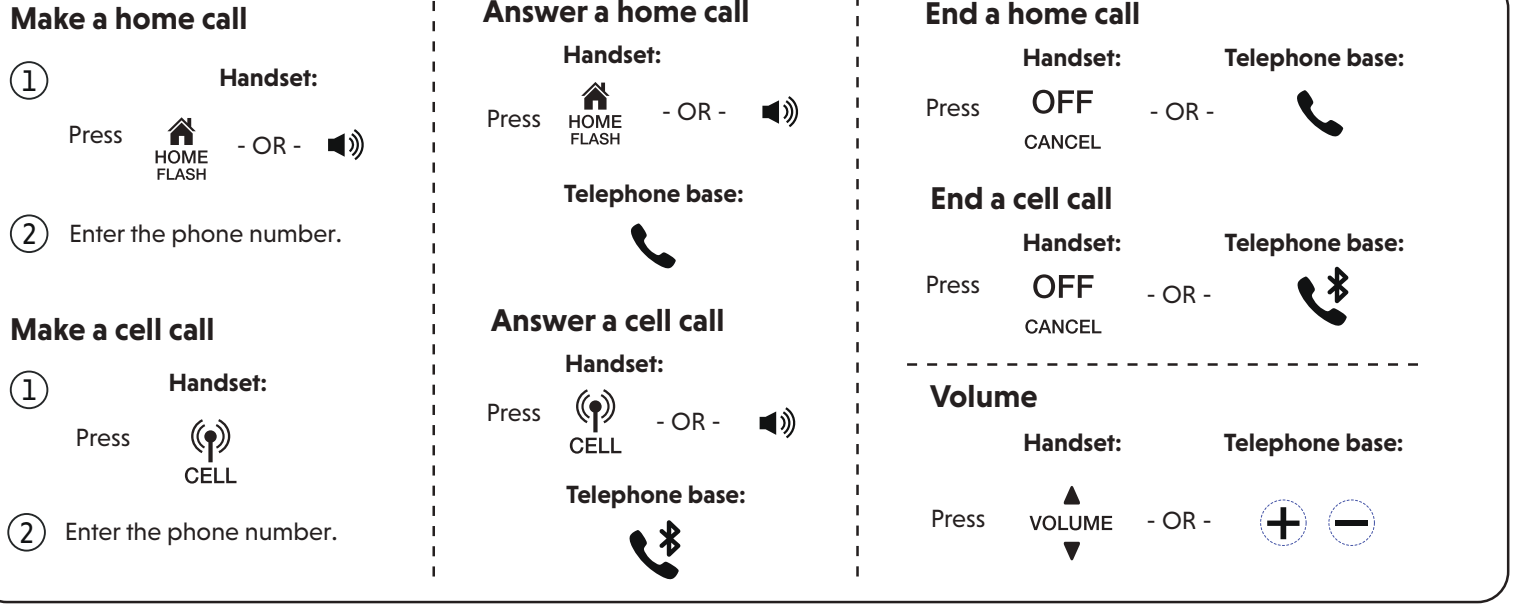
OVERVIEW



Handset

- 1 LCD display
2 CHARGE light
3 MENU/SELECT
- Display the menu.
- Select an item or save an entry or setting while in the menu.
4 VOICE
- Activate the voice-controlled application of one of the connected cell phones when the system is in idle.
5 OFF/CANCEL
- Hang up a call.
- Return to the previous menu or idle mode without making changes.
- Delete digits while predialing.
- Silence the handset ringer temporarily while the phone is ringing.
- Erase the missed call indicator while the handset is not in use.
6 OPER 0
- Enter space character during text editing.
7 QUIET #
- Press and hold to set and turn on the QUIET mode, or turn it off.
- When reviewing a caller ID log entry, press repeatedly to view other dialing options.
8 CALL BLOCK
- Block the incoming call when the telephone is ringing.
- When on a call, press to block the call.
- Show the Smart call blocker menu when idle.
9 MUTE/DELETE
- Mute the microphone during a call.
- Mute the ringer temporarily when the handset is ringing.
- Delete an individual entry while reviewing the caller ID log, the phonebook or the redial memory.
- Delete digits while predialing.
- Delete the playing message or the recorded announcement during message or announcement playback.
10 ▲ VOLUME ▼ / CID
- Show phonebook entries.
- Review the caller ID log.
- Move the cursor to the left or right while entering names or numbers.
- Increase or decrease the listening volume when on a call, or increase or decrease the message playback volume.
11 REDIAL/PAUSE
- Review the redial list.
- Insert a dialing pause while dialing or entering numbers into the phonebook.
12 CELL
- Make or answer a cell call.
- Answer an incoming cell call when you hear a call waiting alert during a cell call.
- Call back the caller if the caller's number is available during message playback.
13 HOME/FLASH
- Make or answer a home call.
- Answer an incoming home call when you hear a call waiting alert.
- Call back the caller if the caller's number is available during message playback.
14
- While reviewing a caller ID log entry, press repeatedly to add or remove 1 in front of the telephone number before dialing or saving it in the phonebook.
- Press and hold to set or dial your voicemail number.
15 TONE X / a ▶
- Switch to tone dialing temporarily during a call if you have pulse service.
- Change the next letter to upper or lower case while entering names.
16
- Make or answer a home call or cell call using the speakerphone.
- Turn on or off the handset speakerphone.

OPERATE



NEED HELP?

For operations and guides to help you using your telephone system, and for latest information and supports, go and check the online help topics and online FAQs. Use your smartphone or mobile device to access our online help.
- Go to https://help.vtechphones.com/ls6381;
- Go to https://help.vtechphones.com/vs324; OR
- Scan the QR code on the right. Launch the camera app or QR code scanner app on your smartphone or tablet. Hold the device's camera up to the QR code and frame it.
Tap the notification to trigger the redirection of the online help.
- If the QR code is not clearly displayed, adjust your camera's focus by moving your device closer or further away until it is clear.
You can also call our Customer Support at 1 (800) 995-9511 [in US] or 1 (800) 267-7377 [in Canada] for help.



