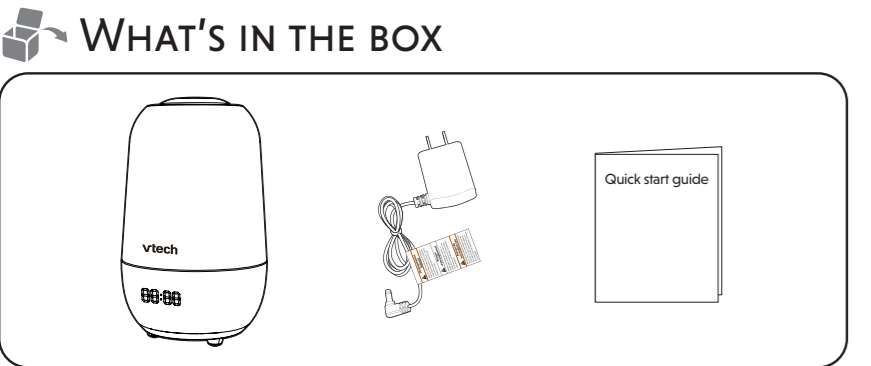


Go to www.vtechphones.com to register your product for enhanced warranty support and the latest VTech product news.



TECHNICAL SPECIFICATIONS

Frequency	2402 - 2480 MHz
Channels	79
Nominal effective range	Maximum power allowed by FCC and IC. Actual operating range may vary according to environmental conditions at the time of use.
Power requirements	Soother power adapter: Input: 100-240V~50/60Hz 0.5A; Output: 5V DC 1.5A -OR- Output: 5V DC 2A Non replaceable built-in Battery: 3.6V, 2600mAh Li-ion, 9.36Wh Li-ion battery



BC8313
Baby Sleep Soother

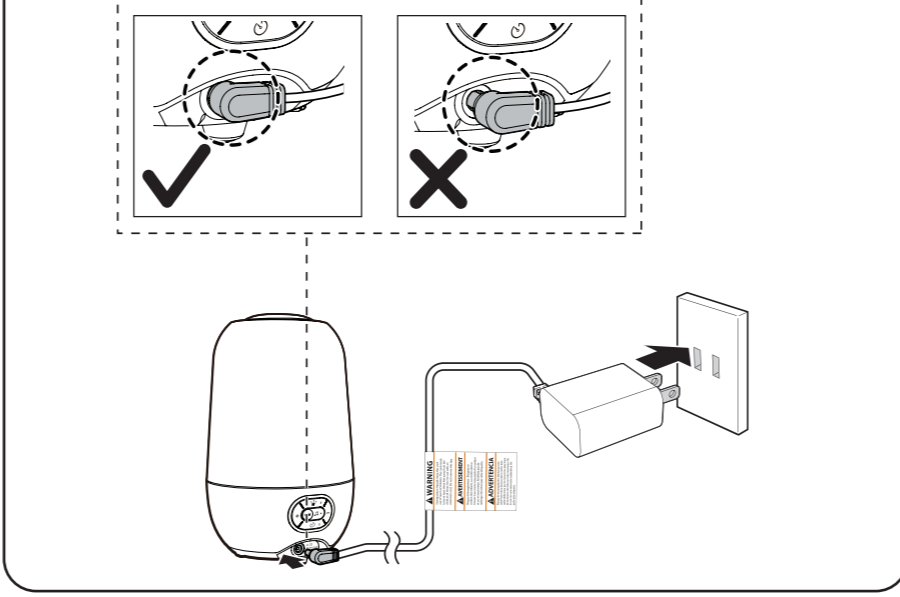
IMPORTANT SAFETY INSTRUCTIONS

- The applied nameplate is located at the bottom of the soother's base.
- When using your equipment, basic safety precautions should always be followed to reduce the risk of fire, electric shock and injury, including the following:
- Follow all warnings and instructions marked on the product.
 - Adult setup is required.
 - This product is not a substitute for adult supervision of the infant. Supervising the infant is the parent's or caregiver's responsibility. This product could cease operating, and therefore you should not assume it will continue working properly for any given period of time. Further, this is not a medical device and should not be used as such.
 - Do not use this product near water. For example, do not use it next to a bath tub, wash bowl, kitchen sink, laundry tub or swimming pool, or in a wet basement or shower.
 - CAUTION:** The battery cannot be subjected to high or low extreme temperature and low air pressure at high altitude during use, storage or transportation. Disposal of battery into fire or a hot oven, or mechanically crushing or cutting of the battery can result in an explosion. Leaving the battery in an extremely high temperature surrounding environment can result in an explosion or the leakage of flammable liquid of gas. Battery subjected to extremely low air pressure may result in an explosion or the leakage of flammable liquid or gas. Dispose of used battery according to the information in the **RBRC seal**.
 - Use only the adapter included with this product. Incorrect adapter polarity or voltage can seriously damage the product.
 - Power adapter information: Input: 100-240V~50/60Hz 0.5A Output: 5V DC 1.5A VTech Telecommunications Ltd. Model: VT07EUS05150 -OR- Input: 100-240V~50/60Hz 0.5A Output: 5V DC 2A VTech Telecommunications Ltd. Model: VT07EUS05200
 - Rechargeable battery information: Zhuhai Great Power Energy Co., Ltd. Li-ion battery, 3.6V, 2600mAh, 9.36Wh; Model: ICR18650-2.6Ah-3.6V-1S1P
 - The power adapters are intended to be correctly oriented in a vertical or floor mount position. The prongs are not designed to hold the plug in place if it is plugged into a ceiling, under-the-table or cabinet outlet.
 - For pluggable equipment, the socket-outlet shall be installed near the equipment and shall be easily accessible.
 - Unplug this product from the wall outlet before cleaning. Do not use liquid or aerosol cleaners. Use a damp cloth for cleaning.
 - Do not cut off the power adapters to replace them with other plugs, as this causes a hazardous situation.
 - Do not allow anything to rest on the power cords. Do not install this product where the cords may be walked on or crimped.
 - This product should be operated only from the type of power source indicated on the marking label. If you are not sure of the type of power supply in your home, consult your dealer or local power company. Do not overload wall outlets or use an extension cord.
 - Do not place this product on an unstable table, shelf, stand or other unstable surfaces.
 - This product should not be placed in any area where proper ventilation is not provided. Slots and openings in the back or bottom of this product are provided for ventilation. To protect them from overheating, these openings must not be blocked by placing the product on a soft surface such as a bed, sofa or rug. This product should never be placed near or over a radiator or heat register.
 - Never push objects of any kind into this product through the slots because they may touch dangerous voltage points or create a short circuit. Never spill liquid of any kind on the product.
 - To reduce the risk of electric shock, do not disassemble this product, but take it to an authorized service facility. Opening or removing parts of the product other than specified access doors may expose you to dangerous voltages or other risks. Incorrect reassembling can cause electric shock when the product is subsequently used.
 - Periodically examine all components for damage.
 - There is a very low risk of privacy loss when using certain electronic devices, such as baby monitors, cordless telephones, etc. To protect your privacy, make sure the product has never been used before purchase, reset the soother periodically by powering off and then powering on the unit, and power off the soother if you will not use it for some time.
 - Children should be supervised to ensure that they do not play with the product.
 - The product is not intended for use by persons (including children) with reduced physical, sensory or mental capabilities, or lack of experience and knowledge, unless they have been given supervision or instruction concerning use of the appliance by a person responsible for their safety.
- SAVE THESE INSTRUCTIONS**
- Cautions**
- Use and store the product at a temperature between 32°F and 104°F.
 - Do not expose the product to extreme cold, heat or direct sunlight. Do not put the product close to a heating source.
 - Warning—Strangulation Hazard—Children have STRANGLED in cords. Keep this cord out of the reach of children (more than 3 ft (0.9m) away). Do not remove this tag.**
 - Never place the soother inside the baby's crib or playpen. Never cover the soother with anything such as a towel or a blanket.
 - Other electronic products may cause interference with your soother. Try installing your soother as far away from these electronic devices as possible: wireless routers, radios, cellular telephones, intercoms, room monitors, televisions, personal computers, kitchen appliances and cordless telephones.
 - Do not allow your child or anyone to look directly into the projector lens while it is turned on to avoid possible eye damage.
- Precautions for users of implanted cardiac pacemakers**
Cardiac pacemakers (applies only to digital cordless devices):
Wireless Technology Research, LLC (WTR), an independent research entity, led a multidisciplinary evaluation of the interference between portable wireless devices and implanted cardiac pacemakers. Supported by the U.S. Food and Drug Administration, WTR recommends to physicians that:
- Pacemaker patients**
- Should keep wireless devices at least six inches from the pacemaker.
 - Should NOT place wireless devices directly over the pacemaker, such as in a breast pocket, when it is turned ON.
- WTR's evaluation did not identify any risk to bystanders with pacemakers from other persons using wireless devices.
- Electromagnetic fields (EMF)**
This VTech product complies with all standards regarding electromagnetic fields (EMF). If handled properly and according to the instructions in this user's manual, the product is safe to be used based on scientific evidence available today.

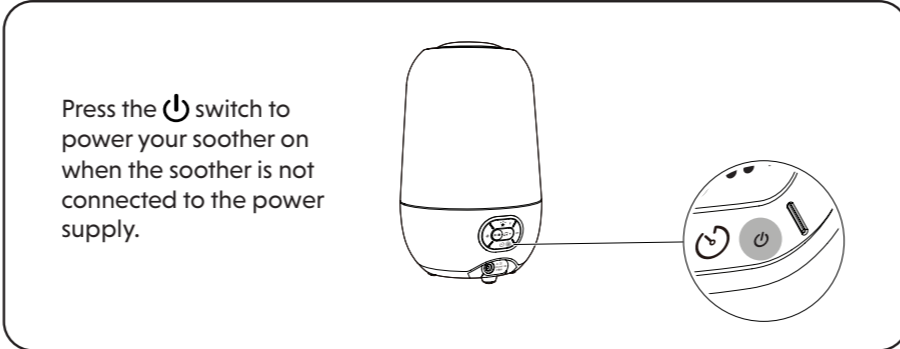
1A CONNECT AND CHARGE THE SOOTHER

- NOTES**
- The rechargeable battery in the soother is built-in.
 - Only use the power adapter supplied with this product.
 - If the soother is connected to a switch controlled electric outlet, make sure the switch is on.
 - Connect the power adapter in a vertical or floor mount position only. The adapter prongs are not designed to hold the weight of the soother, so do not connect it to any ceiling, under-the-table, or cabinet outlets. Otherwise, the adapter may not properly connect to the outlet.
 - Make sure the soother and the power adapter cord are out of reach of children.

Connect the power adapter to the soother and a power supply, then the soother powers on automatically.

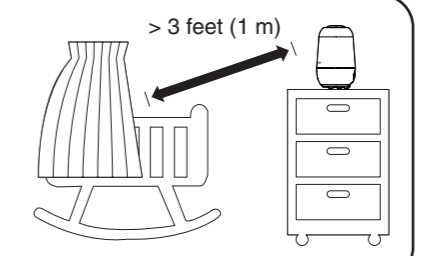


1B POWER ON THE SOOTHER



2 BEFORE USE

- Positioning the soother**
- Place the soother more than 3 feet (1 metre) away from your baby.
- CAUTION**
- Keep the soother out of the reach of your baby. Never place the soother inside the baby's crib or playpen.
- NOTE**
- To avoid interference from other electronic devices, place your soother at least 3 feet (1m) away from devices such as wireless routers, microwaves, cell phones and computers.

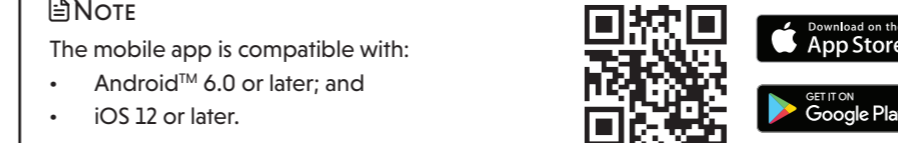


DOWNLOAD THE APP

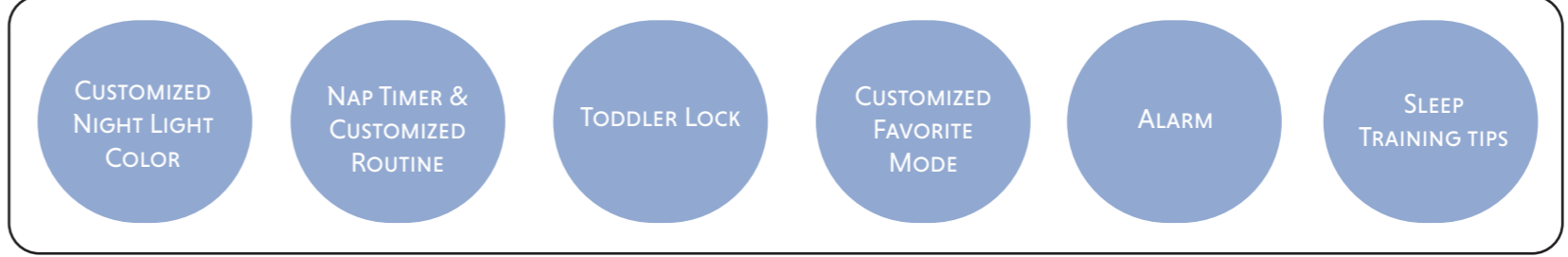
Download MyVTech Soother App for more premium features

Download **MyVTech Soother App** to your mobile device from Apple Store or Google Play store to gain full access of features and conveniently control your soother. Put advanced functions to action, like customizing a routine, with just a few taps of the finger. With **MyVTech Soother App**, you can pamper your baby.

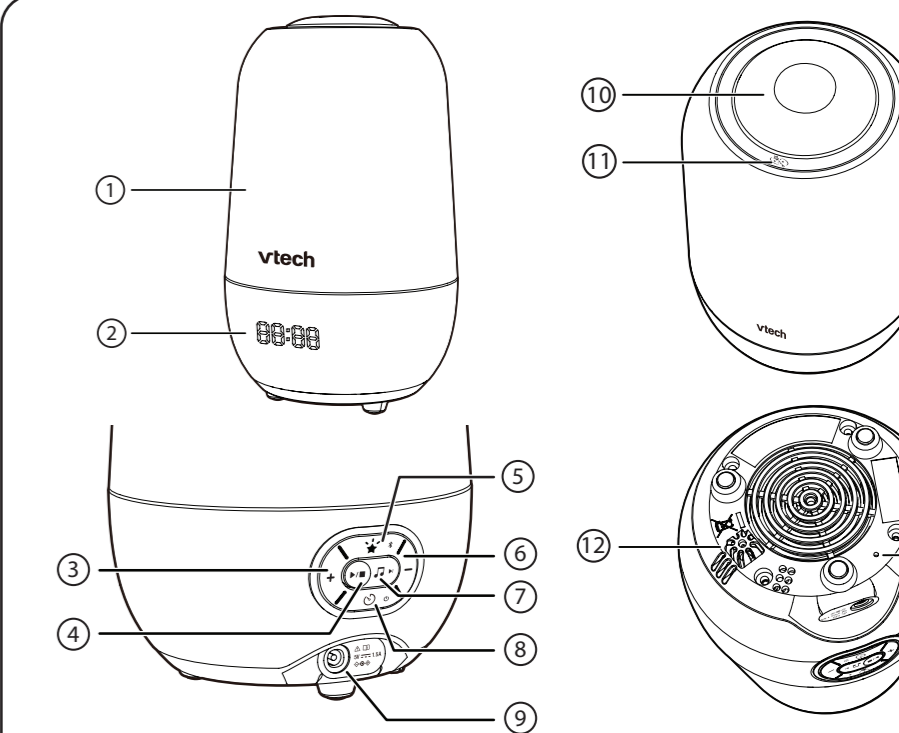
- Step 1**
Install MyVTech Soother App
- Browse the App Store or the Google Play store.
 - Search for the mobile app with the keyword "MyVTech Soother".
 - Download and install the **MyVTech Soother App** to your mobile device.



APP FEATURES



3 OVERVIEW



- Night light**
- Digital display**
- + VOLUME**
 - Press to increase the soother speaker volume.
- Play/Stop**
 - Press to play the lullaby-like audio and press again to stop playing.
- Film projection On/Off key**
- Bluetooth pairing key**
 - Press and hold for 5 seconds to enter the Bluetooth pairing mode.
- VOLUME**
 - Press to lower the soother speaker volume.
- Audio key**
 - Press and hold to change among 4 different modes including soothing sound, lullaby, classical music and storytelling.
- Skip**
 - Press to skip to the next piece.
- On/Off switch**
 - Press and hold to turn on or turn off the soother.
- Timer**
 - Press to select the time interval options and release to start the countdown.
- Power jack**
- Film projector**
- Magic key**
- Temperature sensor**
- RESET key**

