

Go to [www.vtechphones.com](http://www.vtechphones.com) to register your product for enhanced warranty support and the latest Vtech product news.

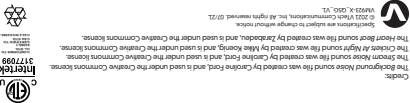
VM923  
VM923-2

Pan and Tilt  
Video Baby Monitor



**vtech**  
Quick start guide

For more support information



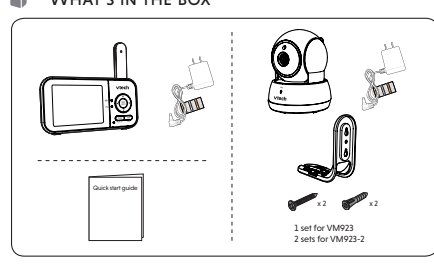
## IMPORTANT SAFETY INSTRUCTIONS

- The applied nomenclature is located at the bottom of the product. This information is required for the correct use of the product. Please read the instructions carefully. When using your equipment, basic safety precautions should always be followed to reduce the risk of fire, electric shock and injury, including the following:
- Read all warnings and instructions marked on the product.
  - Do not use the product near water. For example, do not use the product near a bathtub, shower, swimming pool, laundry tub or swimming pool, or in a wet basement or crawlspace.
  - CAUTION:** Do not install the baby unit at a height where it is not visible to the caregiver.
  - This product is not a substitute for adult supervision of the child. The caregiver should always be present and responsible for any given period of time. Further, this is not a medical device and should not be used as such. This product is intended to assist in supervising your baby. Do not use the product for medical purposes.
  - Do not use this product near open flames, candles, or any other high temperature surrounding environment. Do not use the product in an area where there is a risk of explosion or fire. Do not use the product in an area where there is a risk of explosion or fire. Do not use the product in an area where there is a risk of explosion or fire.
  - CAUTION:** Use only the battery provided. There may be a risk of explosion if a wrong type of battery is used in the parent unit. The battery cannot be subjected to high or low extreme temperature and low air pressure at high altitude during use, storage or transportation. Dispose of battery into fire or hot liquid, or mechanical crushing or cutting of the battery can result in an explosion. Leaving the battery in an extremely high temperature surrounding environment can result in an explosion or the leakage of flammable liquid or gas. Battery subjected to extremely low air pressure may result in an explosion or the leakage of flammable liquid or gas. Dispose of used battery according to the information in the user manual.
  - Use only the adapters included with this product. Do not use other adapters. Do not use the product with an incorrect adapter polarity or voltage or an extension cord.
  - Power adapter information:** Parent unit output: 5V DC 1A. Vtech Telecommunications Ltd. Model: VT05UE105000. Baby unit output: 5V DC 1A. Vtech Telecommunications Ltd. Model: VT05UE105000.
  - Rechargeable battery information:** Parent unit: 3.6V, 2000mAh, 9.36Wh. Baby unit: 3.6V, 2000mAh, 9.36Wh. Model: VT05UE105000.
  - The power adapters are intended to be correctly connected in a vertical or floor mount position. They are not designed to hold the plug in place if it is plugged into a ceiling, under the table, or cabinet.
  - For pluggable equipment, the sockets should not be used to connect the product from the wall outlet before being plugged into a wall outlet or aerosol cleaner. Use a clamp or cord holder to hold the power adapters to replace them with other plugs, as this causes a hazardous situation. Do not allow anything to rest on the power cords. Do not install this product where the cords may be walked on or tripped over.
  - This product should be operated only from the type of power source indicated on the label. If you are not sure of the type of power supply in your home, consult your electrician or local power company.
  - Do not overload wall outlets or use an extension cord.
  - Do not place this product on an unstable table, shelf, stand or other unstable surface.
  - The product should not be placed in any area where proper ventilation is not provided. Slots and openings on the front or bottom of the product are provided for ventilation. To protect them from overheating, these openings must not be blocked by placing the product on a soft surface such as a bed, sofa or rug. The product should never be placed near or over a radiator or heat register.
  - Never push objects of any kind into this product through the accommodation holes. Do not attempt to disassemble the product. Do not use the product near water. Do not use the product near a bathtub, shower, swimming pool, laundry tub or swimming pool, or in a wet basement or crawlspace.
  - To reduce the risk of electric shock, do not touch the interior of the product, but do use an authorized service facility. Opening or removing parts of the product other than those specified can cause electric shock. Do not use the product if you are unsure of the correct use of the product.
  - You should test the sound reception every time you turn on the unit or move it to a new location.
  - Periodically examine all components for damage.
  - There is a very low risk of fire when using certain electronic devices, such as baby monitors, cordless telephones, etc. To protect your privacy, make sure the product has never been used before purchase, reset the baby monitor periodically by powering off and then powering on the unit, and power off the baby monitor if you will not use it for some time.
  - Children should be supervised to ensure that they do not play with the product.
  - The product is not intended for use by persons (including children) with reduced physical, sensory or mental capabilities, or lack of experience and knowledge, unless they may have been given supervision or instruction concerning use of the appliance by a person responsible for their safety.

### SAVE THESE INSTRUCTIONS

- Use and store the product at a temperature between 32°F and 104°F.
  - Do not immerse the product to extreme cold, heat or direct sunlight. Do not put the product close to a heating source.
  - Batteries should not be exposed to excessive heat such as a light bulb or fire.
  - Warning-Strangulation Hazard:** Children have STRANGLER IN CHAIRS. Keep the cord out of the reach of children (more than 3 ft (0.9m) away). Do not remove this tag.
  - Never place the baby unit(s) inside the baby's crib or playpen. Move the baby unit(s) to a safe location when the baby is in the crib or playpen.
  - Other electronic products may cause interference with the baby monitor. For regular use, baby monitors, cordless telephones, room monitors, televisions, personal computers, microwave ovens, and satellite telephones.
- Precautions for users of implanted cardiac pacemakers**
- Should keep wireless devices at least six inches from the pacemaker.
  - Should NOT place wireless devices directly over the pacemaker. Such as in a breast pocket, when it is turned on.
- Wireless Telecommunications Research, LLC (WTR), an independent research entity, has a multidisciplinary evaluation of the interference between portable wireless devices and implanted cardiac pacemakers. Supported by the U.S. Food and Drug Administration, WTR recommends to physicians that:
- Pacemaker patients**
- Should keep wireless devices at least six inches from the pacemaker.
  - Should NOT place wireless devices directly over the pacemaker. Such as in a breast pocket, when it is turned on.
- WTR's evaluation did not identify any risk to bystanders with pacemakers from the parent unit using wireless devices.
- Electromagnetic Fields (EMF)**
- This Vtech product complies with all standards regarding electromagnetic fields (EMF). If handled properly and according to the instructions in the user's manual, the product is safe to be used based on scientific evidence available today.

## WHAT'S IN THE BOX



## 1 CONNECT THE BABY MONITOR

- NOTES**
- The rechargeable battery in the parent unit is built-in.
  - Use only the power adapters supplied with this product.
  - Make sure the baby monitor is not connected to a switch-controlled electric outlet.
  - Connect the power adapters in a vertical or floor mount position only. The adapters' prongs are not designed to hold the weight of baby monitor, so do not connect them to any ceiling, under-the-table, or cabinet outlets. Otherwise, the adapters may not properly connect to the outlets.
  - Make sure the parent unit, the baby units and the power adapter cords are out of reach of children.
- 

## 1 CONNECT THE BABY MONITOR (CONT'D)

**Charge the parent unit battery**  
When you have connected and turned on the parent unit, the battery will be charged automatically.

**NOTES**

- Before using the baby monitor for the first time, charge the parent unit battery for 12 hours. When the parent unit battery is fully charged, the battery icon becomes solid.
- If it takes longer to charge the battery when the parent unit is turned on. To shorten the charging time, turn the parent unit off while charging.
- The standby time varies depending on the sensitivity level you set, your actual use and the age of the battery.

The battery icon indicates the battery status (see the following table).

BATTERY INDICATORS	BATTERY STATUS	ACTION
The screen displays the battery icon with a red light flashes.	The battery has very little power and can only be used for a short time.	Charge without interruption (about 30 minutes).
The battery icon becomes solid.	The battery is fully charged.	To keep the battery charged, connect the unit to AC power when not in use.

## 3 POSITIONING THE BABY MONITOR

**CAUTION**

- Keep the baby unit out of the reach of your baby. Never place or mount the baby unit inside the baby's crib or playpen.

**CAUTION**

- The default volume of your parent unit is level 3, and the maximum volume is level 5. If you experience high-pitched screaming noise from your baby monitor while positioning:
  - Make sure your baby unit and parent unit are more than 3 feet (1 meter) apart, OR
  - Turn down the volume of your parent unit.

**NOTE**

- To avoid interference from other electronic devices, place your baby monitor at least 1 foot (1 meter) away from devices such as wireless routers, microwaves, cell phones and computers.

## 2 POWER ON OR OFF THE BABY MONITOR

1 Slide the ON/OFF switch to power on or off your baby unit.

2 Press and hold POWER to power on or off your parent unit.

**Power off** **Power on**

## 4 STATUS CHECK

Once you power on both your baby unit and parent unit, your parent unit displays image from the baby unit, and the LINK LED light turns on.

The baby unit's POWER LED light turns on.

## BASIC OPERATION - PARENT UNIT

**Use the menu**  
Press MENU to enter the menu, or save a setting. You can use the parent unit for advanced settings or operations, such as to play or stop the baby unit's lullaby, or to adjust the baby unit's sound sensitivity.

**While in the menu:**

- Press **Left Arrow** or **Right Arrow** to scroll among the menu options.
- Press **Up Arrow** or **Down Arrow** to select an item.
- Press **Select** to confirm your selection.
- Press **Talk/Exit** to exit the menu and return to live view.

**Talk to your baby unit**  
Press and hold TALK and speak to your parent unit. Your voice is transmitted to the baby unit. Release TALK when done talking and hear your baby again.

**Turn off the screen**  
Press POWER/LED OFF to switch off the parent unit. Your unit can still hear sound from the selected baby unit.

**Tip**

- Press any keys on the parent unit to turn on the screen again.

**Adjust parent unit speaker volume**

- Press MENU when in idle mode.
- Press **Left Arrow** or **Right Arrow** to choose.
- Press **Up Arrow** or **Down Arrow** to select desired volume level, then press SELECT to confirm your selection.

**Zoom**

- Press MENU when in idle mode.
- Press **Left Arrow** or **Right Arrow** to choose.
- Press **Up Arrow** or **Down Arrow** to choose. Press SELECT.
- Press **Up Arrow** or **Down Arrow** to choose. Press SELECT. Press SELECT to confirm your selection.

## OVERVIEW - PARENT UNIT

- Battery LED light
- 3-level sound indicator light
- Arrow keys
- MENU/SELECT
- LINK LED light
- TALK/EXIT
- POWER/LCD OFF
- Microphone
- Power jack
- Antenna
- RESET
- Speaker

## OVERVIEW - BABY UNIT

- Light sensor
- Camera
- Infrared LEDs
- Microphone
- POWER LED light
- Speaker
- Antenna
- Power jack
- Slots for wall mounting
- PAIR/RESET key
- ON/OFF switch

The parent unit and baby unit(s) provided are already paired.

## NEED HELP?

For operations and guides to help you use your video monitor, and for the latest information and support, check out our online help topics and online FAQs.

Use your smartphone or mobile device to access our online help.

- Go to <https://help.vtechphones.com/vm923> or <https://help.vtechphones.com/vm923-2>. Or
- Scan the QR code on the right. Launch the camera app or QR code scanner app on your smartphone or tablet. Hold the device's camera up to the QR code and frame it. Tap the notification to be redirected to the online help page.

If the QR code is not clearly displayed, adjust your camera's focus by moving your device closer or further away until it is clear.

You can also call our Customer Support at 1 (800) 595-9511 (in US) or 1 (800) 267-7377 (in Canada) for help.

## PARENT UNIT ICONS

### Status icons

- Signal strength:**
  - Full signal: Displays when strong signal strength is detected between the baby unit and the parent unit.
  - Low signal: Displays when moderate or low signal strength is detected between the baby unit and the parent unit.
- Patrol mode:** Displays when the parent unit is in PATROL mode (For VM923-2 only).
- Current view status:** Displays the baby unit number of the baby unit that is being viewed.
- Night vision:** Displays when the current image on the parent unit has zoomed in.
- Talkback:** Displays when talking back to the baby units from parent unit.
- Lullaby:** Displays when a lullaby is playing.
- Mute alert:** Displays when the parent unit speaker volume is set to zero.
- Real-time temperature:** Displays the real-time temperature detected by the baby unit in Fahrenheit (°F) or Celsius (°C) (e.g. 57°F or 14°C).
- Battery status:**
  - Red light: animates when the battery is charging.
  - Yellow light: displays solid when the battery is fully charged.
  - Green light: displays when the battery is low and needs charging.

### Main menu icons

Main menu	Sub-menu	Main menu	Sub-menu
Volume	Parent unit speaker volume	Sound Detection	VOX (Voice Activated Alert)
Settings	Adjust the parent unit's speaker volume.	Sensitivity	You can choose to hear sounds from the baby unit all the time, or to only hear sounds that exceed a certain level. Adjust the microphone sensitivity of your baby unit, the higher the sensitivity level, the more sensitive the baby unit is in detecting sounds for transmitting to the parent unit. See Sound sensitivity and sound activation section.
Zoom	Zoom in and out of the video displayed from the baby unit.	Screen off timer	The parent unit display will dim to conserve energy after your chosen amount of time of inactivity.
Brightness	Adjust the parent unit's LCD screen brightness level.	Off/On	Sound-activated screen
Temperature	Set the minimum/maximum temperature.	Off/On	When it is on, and the baby unit detects no sound, the parent unit screen stays off to save power. Once a sound is detected, the parent unit screen and speaker turns on automatically, and you can see and hear your baby. The parent unit will then turn off again after 50 seconds of no sound detection.
Temperature	Set temperature display in Fahrenheit (°F) or Celsius (°C).	Off/On	NOTE
Temperature		Off/On	When the parent unit screen is off and it receives alerts, for example, link lost between parent unit and baby unit, or battery is low, the parent unit screen and speaker will turn on for 10 seconds.

