

Go to

www.vtechphones.com (US)

to register your product for enhanced warranty support and latest VTech product news.

Go to

phones.vtechcanada.com (CA)

for latest VTech product news.

CS5229

CS5229-2

CS5229-3

CS5229-4

CS5229-5

DECT 6.0 cordless telephone



Scan the QR code for support information



CS5229-X (US)



CS5229-X (CA)

IMPORTANT SAFETY INSTRUCTIONS

When using your telephone equipment, basic safety precautions should always be followed to reduce the risk of fire, electric shock and injury, including the following:

- Read and understand all instructions.
- Follow all warnings and instructions marked on the product.
- Unplug this product from the wall outlet before cleaning. Do not use liquid or aerosol cleaners. Use a damp cloth for cleaning.
- CAUTION:** Do not install the telephone base at a height above 2 meters.
- Do not use this product near water such as near a bath tub, wash bowl, kitchen sink, laundry tub or a swimming pool, nor in a wet basement or shower.
- Do not place this product on an unstable table, shelf, stand or other unstable surfaces.
- Avoid placing the telephone system in places with extreme temperature, direct sunlight, or other electrical devices. Protect your phone from moisture, dust, corrosive liquids and fumes.
- Slots and openings in the back or bottom of the telephone base and handset are provided for ventilation. To protect them from overheating, these openings must not be blocked by placing the product on a soft surface such as a bed, sofa or rug. This product should never be placed near or over a radiator or heat register. This product should not be placed in any area where proper ventilation is not provided.
- This product should be operated only from the type of power source indicated on the marking label. If you are not sure of the type of power supply in your home or office, consult your dealer or local power company.
- Do not allow anything to rest on the power cord. Do not install this product where the cord may be walked on.
- Never push objects of any kind into the telephone base or handset because they may touch dangerous voltage points or create a short circuit. Never spill liquid of any kind on the product.
- To reduce the risk of electric shock, do not disassemble this product, but take it to an authorized service facility. Opening or removing parts of the telephone base or handset other than specified access doors may expose you to dangerous voltages or other risks. Incorrect reassembling can

- Do not overload wall outlets and extension cords.
- Unplug this product from the wall outlet and refer servicing to an authorized service facility under the following conditions:
 - When the power supply cord or plug is damaged or frayed.
 - If liquid has been spilled onto the product.
 - If the product has been exposed to rain or water.
 - If the product does not operate normally by following the operating instructions. Adjust only those controls that are covered by the operation instructions. Improper adjustment of other controls may result in damage and often requires extensive work by an authorized technician to restore the product to normal operation.
 - If the product has been dropped and the telephone base and/or handset has been damaged.
 - If the product exhibits a distinct change in performance.
- Avoid using a telephone (other than cordless) during an electrical storm. There is a remote risk of electric shock from lightning.
- Do not use the telephone to report a gas leak in the vicinity of the leak.
- Do not use the telephone to report a certain circumstances, a spark may be created when the adapter is plugged into the power outlet, or when the handset is replaced in its cradle. This is a common event associated with the closing of any electrical circuit. The user should not plug the phone into a power outlet, and should not put a charged handset into the cradle, if the phone is located in an environment containing concentrations of flammable or flame-supporting gases, unless there is adequate ventilation. A spark in such an environment could create a fire or explosion. Such environments might include: medical use of oxygen without adequate ventilation; industrial gases (cleaning solvents; gasoline vapors; etc.); a leak of natural gas, etc.
- Only put the handset of your telephone next to your ear when it is in normal talk mode.
- The power adapter is intended to be correctly oriented in a vertical or floor mount position. The prongs are not designed to hold the plug in place if it is plugged into a ceiling, under-the-table or cabinet outlet.
- For pluggable equipment, the socket-outlet shall be installed near the equipment and shall be easily accessible.
- CAUTION:** Use only the

- batteries indicated in this manual. There may be a risk of explosion if a wrong type of battery is used. Use only the supplied rechargeable batteries or replacement batteries (BT162342/BT262342). Do not dispose of used battery according to the instruction. Disconnect the telephone line from the equipment before open the battery door.
 - Do not use the battery in following conditions:
 - High or low extreme temperature during use, storage or transportation.
 - Replacement of a battery with an incorrect type that can defeat a safeguard.
 - Disposal of a battery into fire or a hot oven, or mechanically crushing or cutting of a battery, that can result in an explosion.
 - Leaving a battery in an extremely high temperature surrounding environment that can result in an explosion or the leakage of flammable liquid or gas.
 - A battery subjected to extremely low air pressure that can result in an explosion or the leakage of flammable liquid or gas.
- Use only the adapter included with this product. Incorrect adapter polarity or voltage can seriously damage the product.
- The applied nameplate is located at the bottom or rear of the product.

SAVE THESE INSTRUCTIONS

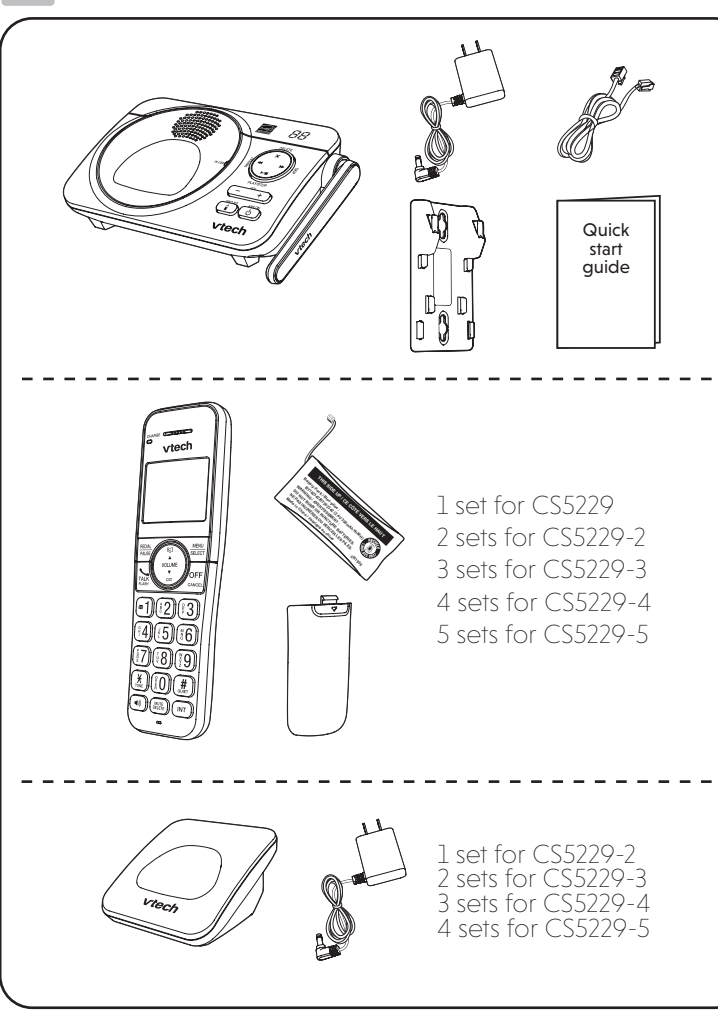
Battery

- Use only the batteries provided or equivalent. To order a replacement, visit our website at www.vtechphones.com or call 1 (800) 595-9511. In Canada, go to phones.vtechcanada.com or call 1 (800) 267-7377.
- Do not dispose of the battery in a fire. Check with local waste management codes for special disposal instructions.
- Do not open or mutilate the battery. Released electrolyte is corrosive and may cause burns or injury to the eyes or skin. The electrolyte may be toxic if swallowed.
- Exercise care in handling batteries in order not to create a short circuit with conductive materials.
- Charge the battery provided with this product only in accordance with the instructions and limitations specified in this manual.

Precautions for users of implanted cardiac pacemakers

Cardiac pacemakers (applies only to digital cordless telephones): Wireless Technology Research, LLC (WTR), an independent research entity, led a

WHAT'S IN THE BOX



CONNECT AND ACTIVATE

- Connect the telephone base**
If you subscribe to digital subscriber line (DSL) high-speed Internet service through your telephone line, make sure you connect a DSL filter (not included) to the telephone wall jack.
- Connect the charger**
- Display**
- Charge the battery**

	The battery is low and needs charging.
	The battery is charging.
	The battery is fully charged.
	Handset ringer is off.
	New voicemail received from your telephone service provider.
NEW	There are new caller ID log entries.
ANS ON	Answering system is on.
MUTE	The handset microphone is muted while on a call.
	Time with AM and PM.
	Number of new/old messages recorded.

SETUP

After you install your telephone or power returns following a power outage and battery depletion, the handset will prompt you to set the date and time, and to configure the answering system through voice guide.

Date and time

Follow the steps below to set the date and time. For example, if the date is 25 December, 2019, and the time is 10:59 AM:

- Enter the date.
- Press **SELECT**.
- Enter the time.
- Press **SELECT**.

Voice guide for answering system

After setting the date and time, the handset will display **Voice guide to set up Ans sys?**

This feature assists you to do the basic setup of the answering system. You can follow the voice guide to record your own announcement, set the number of rings and the message alert tone.

When the handset prompts you to set up the answering system via voice guide

Press **SELECT**.

"Hello! This voice guide will assist you with the basic setup of your answering system"

vttech Quick start guide

TECHNICAL SPECIFICATIONS

Frequency	Crystal controlled PLL synthesizer
Transmit Frequency	Handset: 1921.536-1928.448 MHz Telephone base: 1921.536-1928.448 MHz
Channels	DECT channel: 5
Normal range	Maximum power allowed by FCC and IC
Effective range	Actual operating range may vary according to environmental conditions at the time of use.
Power requirement	Handset: 2.4V Ni-MH battery Telephone base: 6V DC @ 0.4A Charger: 6V DC @ 0.4A
Memory	Directory: 50 memory locations; Call block: 150 entries
Caller ID	Caller ID log: 30 memory locations; Up to 24 digits and 15 characters
Call block	Call block: 150 entries

DISCLAIMER AND LIMITATION OF LIABILITY

VTech Communications, Inc. and its suppliers assume no responsibility for any damage or loss resulting from the use of this user's manual. VTech Communications, Inc. and its suppliers assume no responsibility for any loss or claims by third parties that may arise through the use of this product.

The ENERGY STAR program (www.energystar.gov) recognizes and encourages the use of products that save energy and help protect our environment. We are proud to mark this product with the ENERGY STAR label indicating it meets the latest energy efficiency guidelines.

BASIC OPERATION

Make a call

- Press **TALK FLASH** - OR -
- Enter the phone number

Answer a call

Press **TALK FLASH** - OR - - OR - Press any dialing keys to answer

End a call

Press **OFF CANCEL**

Speakerphone

Press

Volume

Press

DIRECTORY

Directory

The directory can store up to 50 entries, which are shared by all handsets. Each entry may consist of a telephone number up to 30 digits, and a name up to 15 characters.

Add a directory entry

- Enter the phone number.
- Press **MENU**.
- Press **SELECT**.

Review directory entries

- Press
- Press to browse the entries.

Delete a directory entry

When your desired directory entry displays on the handset screen

- Press **DELETE**.
- Press **SELECT**.

CALLER ID

Caller ID

If you subscribe to caller ID service, information about each caller appears after the first or second ring. The caller ID log stores up to 30 entries. Each entry has up to 24 digits for the phone number and 15 characters for the name.

Review caller ID log entries

- Press **CID**.
- Press to browse the entries.

Save a caller ID log entry to the directory

When your desired caller ID entry displays on the handset screen

- Press **MENU**.
- Press **SELECT** to select **Directory**.
- Edit the phone number if needed.
- Press **SELECT**.
- Edit the name if needed, then press **SELECT**.

Dial a caller ID log entry

When your desired caller ID entry displays on the handset screen

Press **TALK FLASH** - OR -

Delete a caller ID log entry

When your desired caller ID entry displays on the handset screen

Press **DELETE** to delete.

LCD LANGUAGE SETTING

If you accidentally set the LCD language to Spanish or French, press **MENU** and then enter **364#** to change the handset LCD language back to English while the handset is not in use.

