

# Appendix A

## Detailed System Check Results

1. System Performance Check
-----------------------------

System Performance Check 2450 MHz Head
--

Test Laboratory: The name of your organization

## System Performance Check 2450MHz Head

**DUT: D2450V2; Type: D2450V2; Serial: 733**

Communication System: UID 0, CW; Frequency: 2450 MHz; Duty Cycle: 1:1

Medium: HSL2450; Medium parameters used:  $f = 2450$  MHz;  $\sigma = 1.827$  S/m;  $\epsilon_r = 40.648$ ;  $\rho = 1000$  kg/m<sup>3</sup>

Phantom section: Flat Section

DASY 5 Configuration:

- Probe: EX3DV4 - SN3923; ConvF(7.87, 7.87, 7.87); Calibrated: 2019-10-22
- Sensor-Surface: 1.4mm (Mechanical Surface Detection)
- Electronics: DAE3 Sn414; Calibrated: 2018-12-03
- Phantom: SAM 7; Type: SAM; Serial: 1027
- DASY52 52.8.8(1222); SEMCAD X 14.6.10(7331)

**Body/d=10mm, Pin=250mW/Area Scan (9x10x1):** Measurement grid: dx=12mm, dy=12mm  
Maximum value of SAR (measured) = 15.6 W/kg

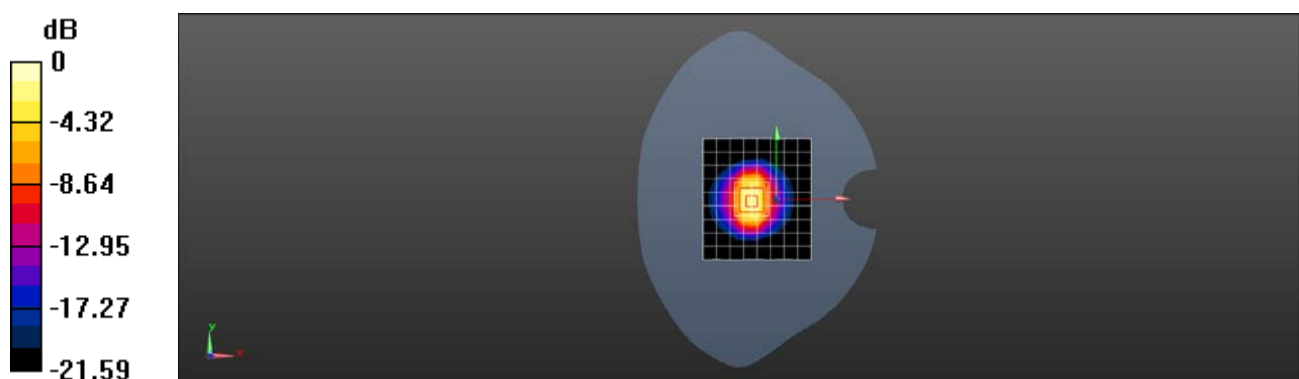
**Body/d=10mm, Pin=250mW/Zoom Scan (7x7x7)/Cube 0:** Measurement grid: dx=5mm, dy=5mm, dz=5mm

Reference Value = 81.30 V/m; Power Drift = -0.00 dB

Peak SAR (extrapolated) = 25.9 W/kg

**SAR(1 g) = 12.9 W/kg; SAR(10 g) = 6.06 W/kg**

Maximum value of SAR (measured) = 21.1 W/kg



0 dB = 21.1 W/kg = 13.24 dBW/kg